

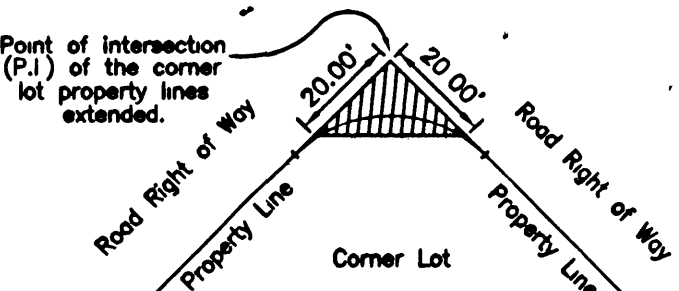
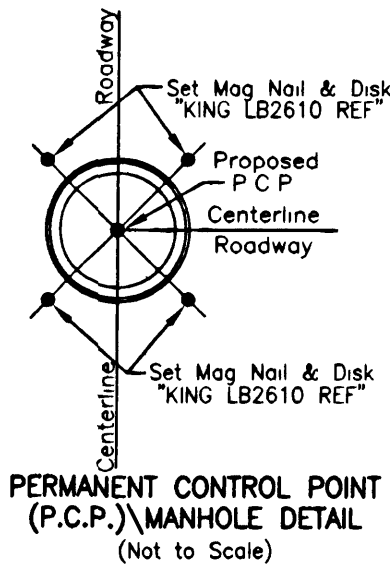
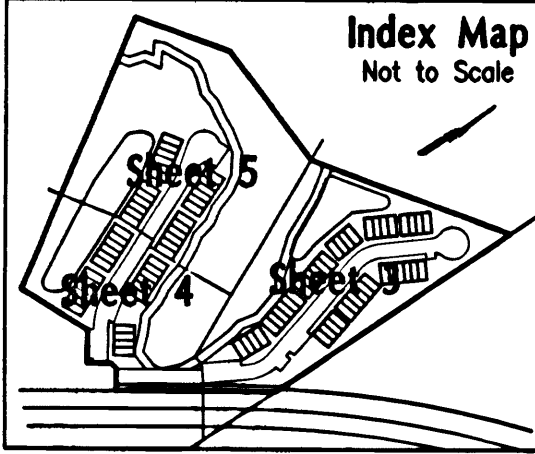
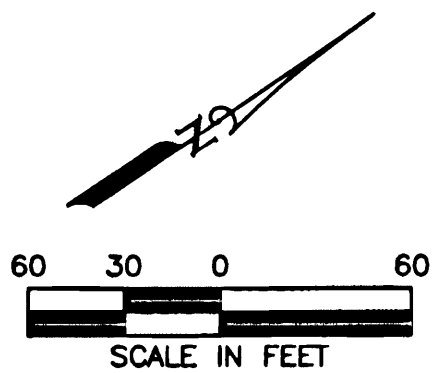
EDGEWATER AT GRAND OAKS PHASE 2

BEING A SUBDIVISION OF LAND LYING WITHIN SECTION 15, TOWNSHIP 26 SOUTH, RANGE 19 EAST
PASCO COUNTY, FLORIDA

- LEGEND**
- INDICATES SET PERMANENT REFERENCE MONUMENT "KING PRM LB 2610"
 - FCM ■ INDICATES FOUND CONCRETE MONUMENT
 - INDICATES SET PERMANENT CONTROL POINT "KING PCP LB 2610"
 - INDICATES LOT CORNER
 - O/A INDICATES OVERALL
 - (R) INDICATES RADIAL LINES
 - (NR) INDICATES NON-RADIAL LINES
 - ==== INDICATES EASEMENTS, SIZE AND TYPE AS NOTED
 - D. INDICATES DRAINAGE EASEMENT
 - U. INDICATES UTILITY EASEMENT
 - I.E. INDICATES INGRESS/EGRESS EASEMENT
 - L. INDICATES LANDSCAPE EASEMENT
 - C.S.T. INDICATES CLEAR SIGHT TRIANGLE

Bearings shown hereon are based upon an assumed datum, more specifically the bearing of 500°23'13"W, being the East boundary Section 15, Township 26 South, Range 19 East

THE COORDINATE VALUES SHOWN HEREON ARE BASED UPON THE PASCO COUNTY PRIMARY HORIZONTAL CONTROL NETWORK AND WERE ESTABLISHED TO THIRD-ORDER CLASS I ACCURACY AS DEFINED BY THE STANDARDS AND SPECIFICATIONS FOR GEODETIC CONTROL NETWORKS, AS PUBLISHED BY THE FEDERAL GEODETIC CONTROL COMMITTEE DATED SEPTEMBER 1984 OR THE LATEST EDITION



NOTE: On all corner lots, nothing will be erected, placed, or planted in such a manner as to impede vision within twenty (20) feet of the intersection of the road right-of-way lines in both directions.

CLEAR SIGHT TRIANGLE DETAIL
(Not to scale)

KING ENGINEERING ASSOCIATES, INC.
4921 MEMORIAL HIGHWAY
ONE MEMORIAL CENTER, SUITE 300
TAMPA, FLORIDA 33634
PHONE 813 • 880 • 8851
FAX 813 • 880 • 8852
E-MAIL king@kingengineering.com
CERTIFICATE OF AUTHORIZATION No. LB 2610

NOTICE 1. This plat, as recorded in its graphic form, is the official depiction of the subdivided lands described herein and will in no circumstances be supplanted in authority by any other graphic or digital form of the plat. There may be additional restrictions that are not recorded on this plat that may be found in the public records of this county.

Line Table

LINE	BEARING	DISTANCE
L13	N 68°22'58"E	33.03'
L14	N 68°22'58"E	32.28'
L15	S 36°15'45"E	5.96'
L16	S 36°15'45"E	5.96'
L23	N 66°52'48"E	17.00'
L24	N 66°52'48"E	17.00'
L25	N 66°52'48"E	16.72'
L26	N 53°44'15"E	16.94'
L27	N 21°37'02"W	9.87'
L28	S 66°52'48"W	17.00'
L29	S 66°52'48"W	17.00'
L30	S 66°52'48"W	17.00'
L34	N 28°28'32"E	22.02'
L55	S 50°18'23"E	13.01'
L58	S 56°51'37"W	68.01'
L67	N 48°56'57"W	30.40'
L68	S 48°10'53"W	31.20'
L69	S 51°32'35"E	40.96'
L70	S 58°35'29"W	25.67'
L71	S 18°11'46"W	47.98'
L72	S 57°12'59"W	24.74'
L82	N 18°58'36"W	18.31'
L83	N 23°07'11"W	18.62'

Curve Table

CURVE	DELTA	RADIUS	ARC	CHORD	TANGENT	CHORD BEARING
C5	13°08'33"	200.00	45.88	45.78	23.04	S 29°41'28"E
C22	13°08'33"	180.00	41.29	41.20	20.74	S 29°41'28"E
C23	143°04'09"	45.00	112.37	85.37	134.76	N 35°16'20"E
C24	60°01'32"	48.00	50.29	48.02	27.73	N 06°14'50"W
C25	13°08'33"	220.00	50.46	50.35	25.34	S 29°41'28"E
C31	49°08'31"	25.00	21.43	20.78	11.42	N 03°55'16"E
C32	21°50'51"	25.00	9.53	9.48	4.82	N 39°23'57"E
C33	96°07'50"	25.00	41.94	37.20	27.83	S 81°36'42"E

3406-001-001