

20/147

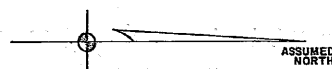
GULFVIEW VILLAS

A CONDOMINIUM

BEING A PORTION OF SECTION 21, TOWNSHIP 25 SOUTH, RANGE 16 EAST, PASCO COUNTY, FLORIDA.

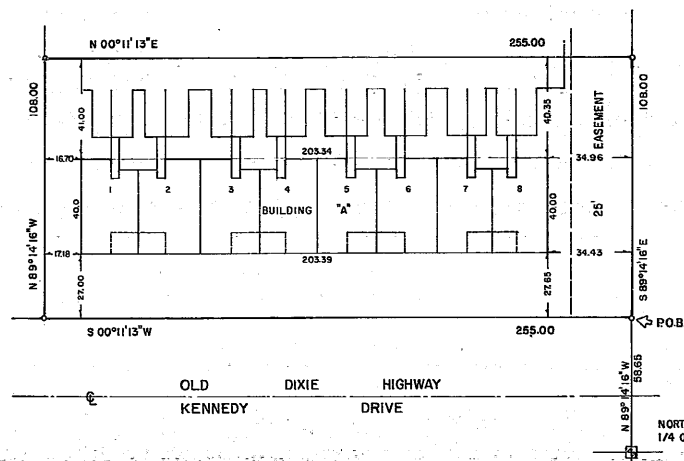
PHASE ONE

FOR A POINT OF REFERENCE COMMENCE AT THE NORTHEAST CORNER OF THE NORTHEAST 1/4 OF SECTION 21, TOWNSHIP 25 SOUTH, RANGE 16 EAST, RUN THENCE ALONG THE NORTH LINE OF THE NORTHWEST 1/4 OF SEC. 21, NORTH 89°14'16" WEST, 58.65 FEET TO A POINT OF BEGINNING, THENCE SOUTH 00°11'13" WEST, 255.00 FEET, THENCE NORTH 89°14'16" WEST, 108.00 FEET, THENCE NORTH 00°11'13" EAST, 255.00 FEET, THENCE SOUTH 89°14'16" EAST, 108.00 FEET TO THE POINT OF BEGINNING.
CONTAINS 0.63 ACRES MORE OR LESS



0 15 30
SCALE — 1" = 30'

MARCH 3 1982

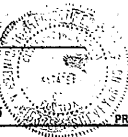


ALL AREAS NOT INCLUDED WITHIN A UNIT AND NOT DESIGNATED
AS LIMITED COMMON ELEMENTS ARE COMMON ELEMENTS.
ALL AREAS OF COMMON ELEMENTS ARE SUBJECT TO EASEMENTS
FOR BRANCH-SIDE AND FOR UTILITIES OF PASCO COUNTY AND FLORIDA SERVICE

SURVEYORS CERTIFICATE

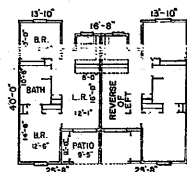
I, THE UNDERSIGNED REGISTERED PROFESSIONAL LAND SURVEYOR, DULY AUTHORIZED TO PRACTICE UNDER THE LAWS OF THE STATE OF FLORIDA HEREBY CERTIFY THAT THE CONSTRUCTION OF THE IMPROVEMENTS DESCRIBED IS SUBSTANTIALLY COMPLETE SO THAT SUCH MATERIAL, TOGETHER WITH THE WORDING OF THE DECLARATION OF CONDOMINIUM, RELATING TO MATTERS OF SURVEY IS A CORRECT REPRESENTATION OF THE IMPROVEMENTS DESCRIBED, AND FURTHER THAT FROM THE SUBJECT MATTER THERE CAN BE DETERMINED THEREFROM THE IDENTIFICATION, LOCATION, AND DIMENSIONS OF EACH UNIT AND THE COMMON ELEMENTS.

Clifford Wendell
CLIFFORD WENDELL
REGISTERED LAND SURVEYOR
FLORIDA CERTIFICATE NO. 3552
PROFESSIONAL ENGINEER NO. 19375



PREPARED BY AMERICAN ENGINEERING INC.

FILED AND RECORDED IN THE PUBLIC RECORDS OF PASCO COUNTY, FLORIDA
ON THIS 15th DAY OF March, A.D. 1982 IN PLAT BOOK NO. 20 PAGE NO. 147



TYPICAL FLOOR PLAN
SCALE — 1" = 20'

J. D. Litterman
CLERK OF THE CIRCUIT COURT

By: J. D. Litterman, Sec.