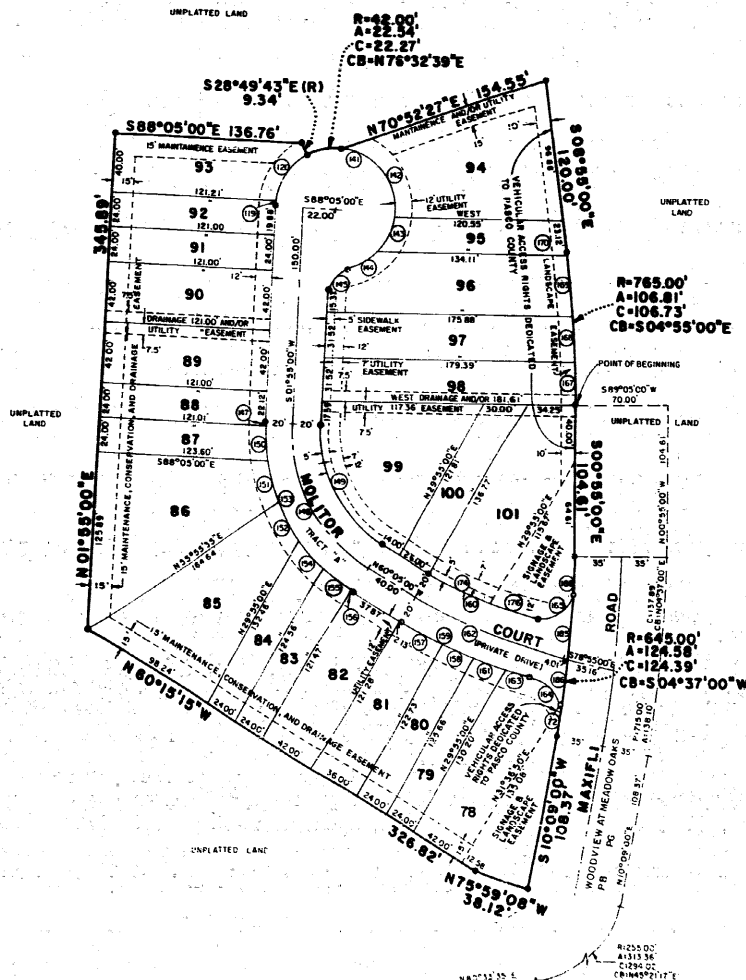


24-25

CURVE TABLE					
NO.	DELTA	BURST	ARC	CHORD	CH. BEARING
72	00°30'36"	643.00	24.15	24.15	S09°04'36"E
119	00°37'36"	42.00	4.15	4.15	S09°04'36"E
120	00°37'36"	42.00	58.30	58.30	S39°45'36"E
141	00°37'36"	42.00	84.65	84.65	S39°45'36"E
142	00°39'00"	42.00	67.66	67.66	N41°01'30"E
143	00°39'00"	42.00	26.35	25.92	N42°01'25"E
144	00°40'00"	42.00	21.24	20.81	N42°01'25"E
145	00°40'00"	25.00	21.24	20.81	N42°01'25"E
147	00°49'36"	130.00	1.89	1.89	N40°50'00"E
148	00°50'00"	90.00	118.03	113.31	N40°50'00"E
149	00°50'00"	90.00	97.39	92.74	S25°00'00"E
150	00°50'00"	90.00	70.75	66.10	N41°01'17"E
151	1°32'30"	130.00	30.16	30.16	N29°46'30"E
152	1°32'30"	130.00	30.22	30.16	N29°46'30"E
153	1°32'30"	130.00	140.87	139.91	N29°46'30"E
154	1°30'00"	130.00	140.87	139.91	N29°46'30"E
155	1°30'00"	130.00	24.22	24.19	N29°46'30"E
156	00°49'36"	130.00	4.15	4.15	N40°50'00"E
157	00°49'36"	130.00	4.15	4.15	N40°50'00"E
158	00°49'36"	130.00	24.19	24.19	N40°50'00"E
159	00°49'36"	130.00	96.66	96.66	N41°01'33"E
160	00°49'36"	130.00	85.36	85.36	N41°01'33"E
161	00°49'36"	130.00	85.36	85.36	N41°01'33"E
162	00°49'36"	130.00	115.05	114.57	S69°30'00"E
163	00°49'36"	130.00	115.05	114.57	S69°30'00"E
164	00°49'36"	130.00	44.11	44.11	S79°03'51"E
165	00°49'36"	130.00	32.31	32.31	S79°03'51"E
166	00°49'36"	130.00	31.63	31.63	S79°03'51"E
167	00°49'36"	130.00	28.81	28.81	S00°46'28"E
168	00°49'36"	130.00	28.81	28.81	S00°46'28"E
169	00°49'36"	130.00	21.60	21.60	S02°47'40"E
170	00°49'36"	130.00	42.56	42.56	S01°41'12"E
171	00°49'36"	130.00	1.17	1.17	S01°41'12"E
172	00°49'36"	130.00	50.35	50.35	N66°27'25"E
173	00°49'36"	130.00	35.82	35.82	N66°27'25"E
174	00°49'36"	130.00	35.82	35.82	N66°27'25"E
175	00°49'36"	130.00	28.18	28.18	N66°27'25"E
176	00°49'36"	130.00	28.18	28.18	N66°27'25"E
177	00°49'36"	130.00	28.18	28.18	N66°27'25"E
178	00°49'36"	130.00	28.18	28.18	N66°27'25"E
179	00°49'36"	130.00	28.18	28.18	N66°27'25"E
180	00°49'36"	130.00	28.18	28.18	N66°27'25"E



## NOTES

- 1 ——— INDICATES PERMANENT REFERENCE MONUMENT (PRM)  
2 ——— INDICATES PERMANENT CONTROL POINT (PCP)  
3 EASEMENTS ARE SHOWN THUS: \_\_\_\_\_ AND \_\_\_\_\_ AND \_\_\_\_\_  
4 AND ARE FOR DRAINAGE AND/OR UTILITIES, AIRPORT, CABLE, TELEVISION  
5 BEARINGS SHOWN HEREON ARE BASED ON AN ASSUMED BEARING OF  
6 N 89°21'30" E ON THE SOUTHLINE OF THE SE 1/4 OF THE SE 1/4 OF  
7 SEC. 33, TWP. 24 S., R. 10 E.  
8 ALL LOTS SHALL USE MOLITOR CUTOFF AS ACCESS TO MAXFLY ROAD  
9 AND ARE SPECIFICALLY PROHIBITED FROM URECT ACCESS TO MAXFLY  
10 ROAD UNLESS OTHERWISE PERMITTED BY PASCO COUNTY  
11 LAND AND DRAINAGE EASEMENTS ARE FOR THE PURPOSE OF CONSTRUCTION,  
12 MAINTENANCE, REPAIR, AND REPAIR OF THE AIRPORT SHOWN HEREON.  
13 ASSOCIATION, THE AIRPORT SHOWN HEREON ARE DEDICATED TO THE AIRPORT SHOWN  
14 HEREON, AND MEADOWS DEVELOPMENT CORP INC

CRUMLEY & ASSOCIATES, INC.

SHEET 2 OF 2  
PB 2/2