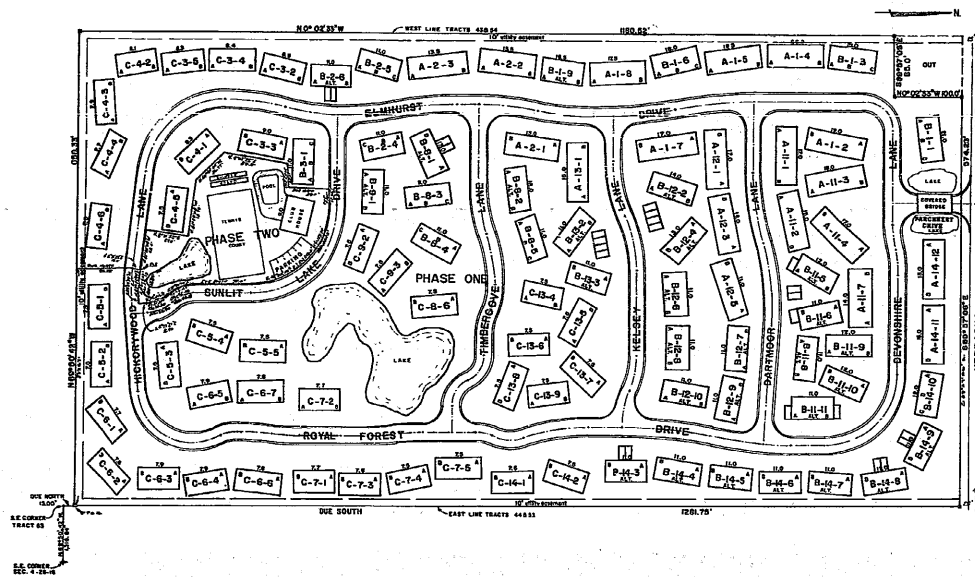


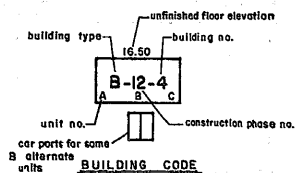
THE WILDS

A CONDOMINIUM DEVELOPMENT



GENERAL NOTES

1. CLEARANCE LINE SHOWN ARE BASED ON AN ASSUMED 22-FOOT CLEARANCE NORTH 89° 50' 42" WEST FOR THE SOUTH BOUNDARY LINE OF SECTION 4, TOWNSHIP 26 SOUTH, RANGE 16 EAST, PASCO COUNTY FLORIDA.
2. ELEVATIONS SHOWN HEREON REFER TO THE NATIONAL GEODETIC VERTICAL DATUM.
3. —■— INDICATES PERMANENT REFERENCE MONUMENT (P.R.M.).
4. ALL COMMON ELEMENTS ARE SUBJECT TO EASEMENTS FOR DRAINAGE AND/OR UTILITIES AND ARE NOT GRAPHICALLY ILLUSTRATED HEREON.
5. DEVELOPER WILL ASSIGN PARKING.
6. COMMON ELEMENTS SUCH AS, BUT NOT LIMITED TO, CONDUITS, WIRES, OUTLETS, UTILITY LINES, DUCTS, PLUMBING, IRRIGATION SYSTEMS, STREET LIGHTING, AND EASEMENTS OF SUPPORT WITHIN THE UNITS HAVE NOT BEEN GRAPHICALLY ILLUSTRATED HEREON.
7. UNFINISHED FLOOR ELEVATIONS AS SHOWN ON SHEET 2 OF 6 REFER TO FIRST FLOOR LEVEL UNFINISHED FLOOR AS SHOWN ON SHEET 3 OF 6



BUILDING LAYOUT

19 - TYPE A (2 UNIT - 1 STORY - CAR PORT)
 10 - TYPE B (3 UNIT - 1 STORY - NO CAR PORT)
 27 - TYPE B alternate (2 UNIT - 1 STORY - NO CAR PORT)
 38 - TYPE C (2 UNIT - 2 STORY - GARAGE)
 TOTAL BUILDINGS - 94
 TOTAL UNITS - 198
 NET ACREAGE - 19.18 AC.
 DENSITY - 10.32 UNITS/AC.

SHEET 2 OF 6