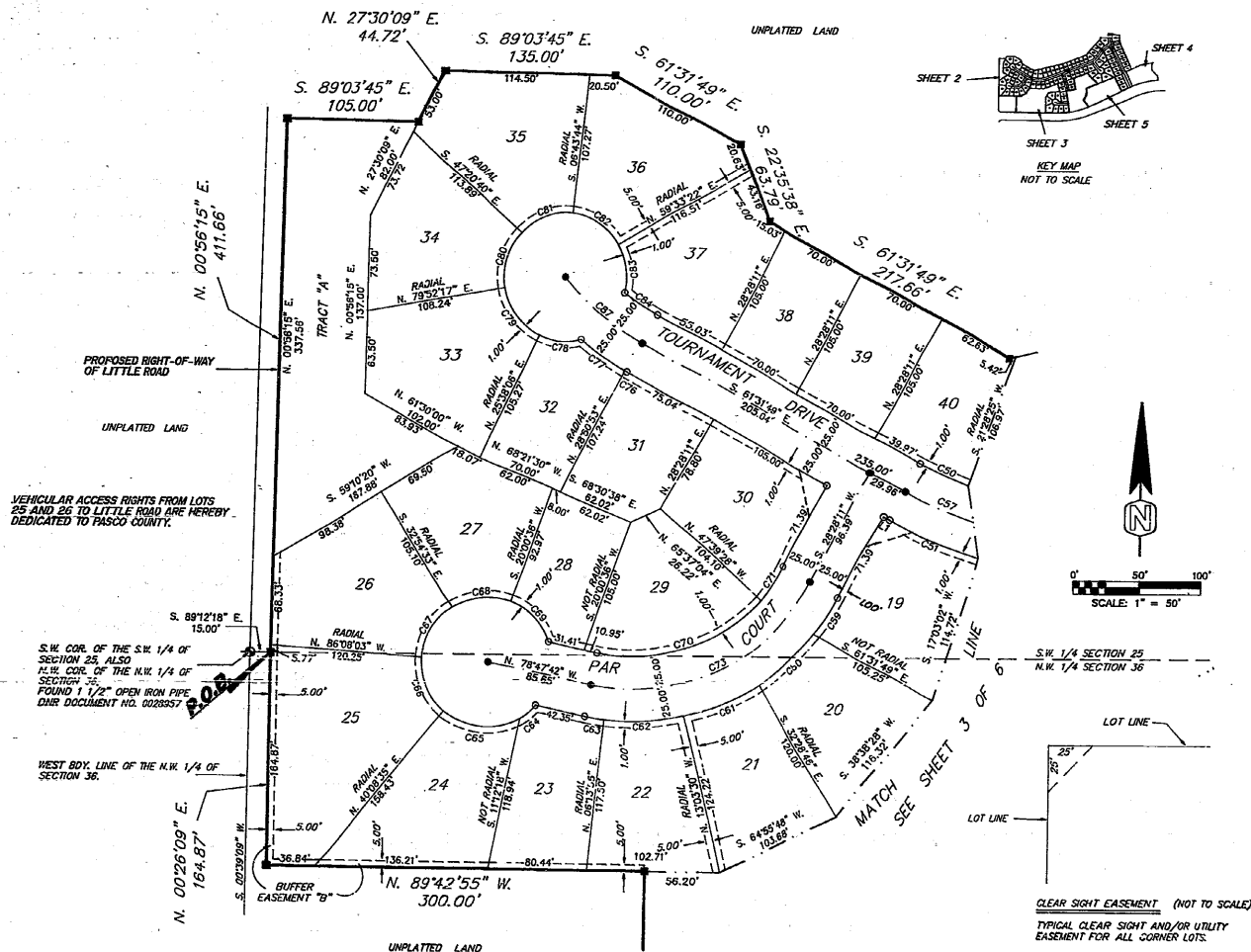


# FAIRWAY OAKS UNIT ONE-B

A PORTION OF THE SOUTHWEST 1/4 OF SECTION 25, TOWNSHIP 24 SOUTH, RANGE 16 EAST AND  
A PORTION OF THE NORTHWEST 1/4 OF SECTION 36, TOWNSHIP 24 SOUTH, RANGE 16 EAST, PASCO COUNTY, FLORIDA,  
AND A REPLAT OF A PORTION OF TRACT 21 OF THE PORT RICHEY LAND COMPANY SUBDIVISION OF SAID SECTION 36  
AS RECORDED IN PLAT BOOK 1, PAGES 60 AND 61 OF THE PUBLIC RECORDS OF PASCO COUNTY, FLORIDA.



CLEAR SIGHT EASEMENT (NOT TO SCALE)  
TYPICAL CLEAR SIGHT AND/OR UTILITY  
EASEMENT FOR ALL CORNER LOTS.

SHEET 2 OF 6

FAIRWAY OAKS UNIT ONE-B  
PLAT BOOK 27, PAGE 36