

QUAIL RIDGE UNIT TWO A REPLAT OF TRACT D

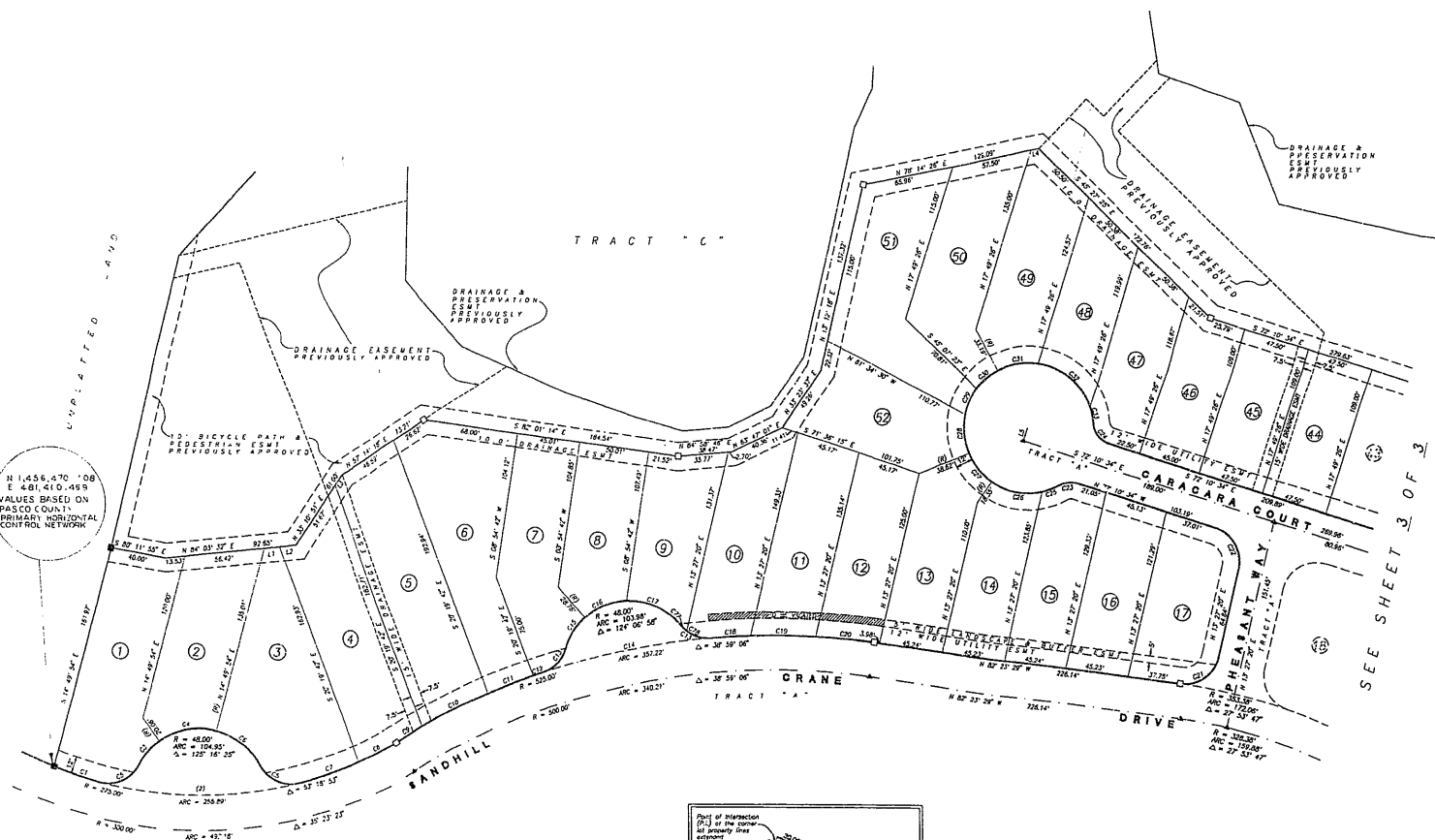
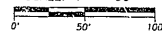
A SUBDIVISION IN
SEC 6, TWP 25S, RNG 18E, PASCO COUNTY, FLORIDA
SHEET 2 OF 3

PLAT BOOK 35
PAGE 16

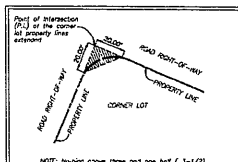
LEGEND

- ▲ FOUND PK & DISC NO. 3423
- PRM ■ FOUND CONC MONUMENT 4"x4 NO 3423
- PRM □ SET 4"x6" CONC MONUMENT NO. 4882
- (R) RADIAL

SCALE: 1" = 50'



N 1,456,470.08
E 481,410.489
VALUES BASED ON
PASCO COUNTY
PRIMARY HORIZONTAL
CONTROL NETWORK



TYPICAL CLEAR SIGHT TRIANGLE
FOR ALL CORNER LOTS.

NOTES:

1. BEARINGS SHOWN HEREON ARE BASED ON THE G.O.F. SANDHILL CRANE DRIVE BEING IN 89 28' 10" E 145 PER PLAT RECORDED IN P.S. 28 PGS 125 THRU 128.
2. THERE MAY BE ADDITIONAL RESTRICTIONS NOT SHOWN ON THIS PLAT THAT MAY BE FOUND IN THE PUBLIC RECORDS OF PASCO COUNTY.
3. "VEHICULAR ACCESS RIGHTS DEDICATED TO PASCO COUNTY" LOTS 13 THRU 27 INCLUSIVE & LOTS 29 & 30.
4. TRACT "C" IS A PRIVATE ROAD FOR THE USE AND BENEFIT OF THE RESIDENTS OF QUAIL RIDGE UNIT TWO AND THEIR ASSOCIATIONS AND SHALL BE DEED TO THE HOMEOWNERS ASSOCIATION SUBJECT TO AN EASEMENT TO BE GRANTED IN FAVOR OF PASCO COUNTY, FLORIDA FOR THE PURPOSE OF MAINTAINING THE WATER AND SEWER SYSTEMS.

GLOBAL SURVEYS INC.
20178 COTTEE BOULEVARD, CROSSROADS PLAZA SUITE 3
P.O. BOX 12182 BROOKSVILLE, FLORIDA 34603
(352) 799-1651 Fax: (352) 799-1662



PRIN. DONALD C. BARRELL, P.L.S.