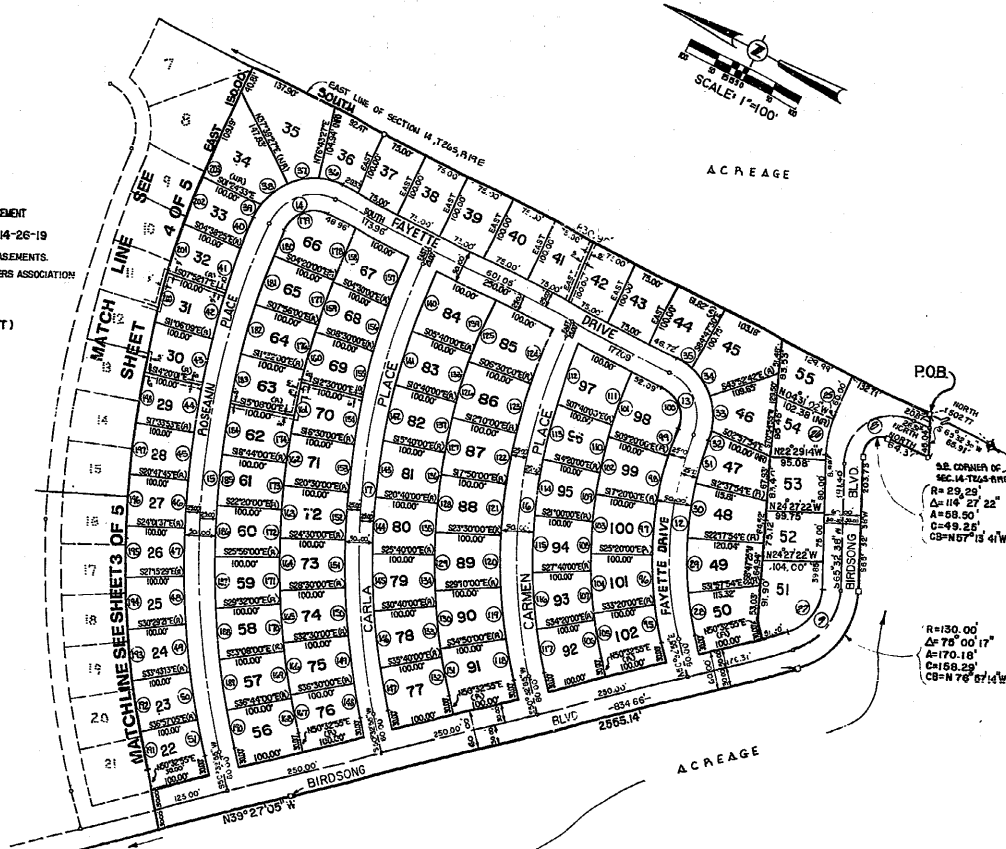


A PORTION OF SECTION 14, TOWNSHIP 26 SOUTH, RANGE 19 EAST, PASCO COUNTY, FLORIDA

SURVEY NOTES

- ### LEGEND

1. P.B. INDICATES POINT OF BEGINNING.
2. □ INDICATES PERMANENT REFERENCE MONUMENT. (SET)
3. ○ INDICATES PERMANENT CONTROL POINT.
4. RFL INDICATES NON-RADIAL LINE.
5. ——— INDICATES DRAINAGE AND UTILITY EASEMENT
5 FEET EACH SIDE 10 FOOT TOTAL.
6. ■ INDICATES PERMANENT REFERENCE
MONUMENT (FOUND)



PREPARED BY: KING ENGINEERING ASSOCIATES, INC.
8406 Massachusetts Ave.
Suite A-2
New Port Richey, FL 34653