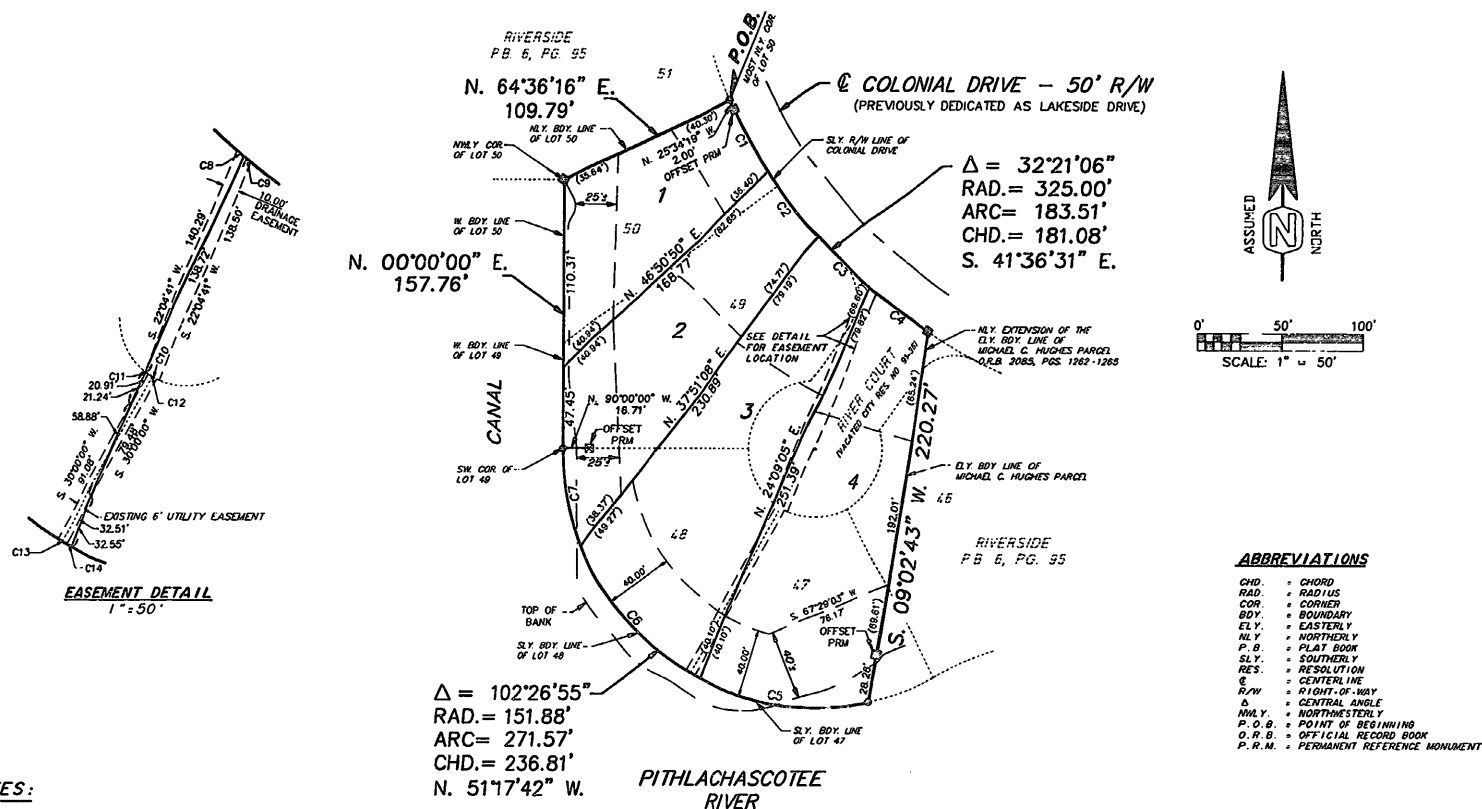


HUGHES LANDING

A REPLAT OF A PORTION OF LOTS 46 AND 47, A PORTION OF OF VACATED RIVER COURT AND ALL OF LOTS 48, 49 AND 50, AS SHOWN ON THE PLAT OF RIVERSIDE, RECORDED IN PLAT BOOK 6, PAGE 95, OF THE PUBLIC RECORDS OF PASCO COUNTY, FLORIDA.
LYING WITHIN SECTION 9. TOWNSHIP 26 SOUTH, RANGE 16 EAST.



CURVE NUMBER	CENTRAL ANGLE	CURVE RADIUS	ARC LENGTH	CHORD LENGTH	CHORD BEARING
C1	08°31'34"	325.00'	48.36'	48.32'	S. 29°41'45" E.
C2	08°31'31"	325.00'	48.36'	48.31'	S. 38°13'18" E.
C3	07°38'30"	325.00'	43.35'	43.31'	S. 46°18'18" E.
C4	07°39'31"	325.00'	43.44'	43.41'	S. 53°57'19" E.
C5	40°08'08"	151.88'	106.39'	104.23'	N. 82°27'06" W.
C6	40°08'25"	151.88'	106.31'	104.16'	N. 42°19'49" W.
C7	22°12'21"	151.88'	58.86'	58.49'	N. 11°10'25" W.
C8	00°55'54"	325.00'	5.28'	5.28'	N. 49°39'36" W.
C9	00°55'12"	325.00'	5.22'	5.22'	S. 50°35'09" E.
C10	14°30'23"	40.00'	10.13'	10.10'	S. 59°50'07" E.
C11	03°07'00"	40.00'	2.18'	2.18'	S. 54°08'26" E.
C12	08°36'09"	40.00'	6.01'	6.00'	S. 60°00'00" E.
C13	02°15'48"	151.91'	6.00'	6.00'	S. 60°00'00" E.
C14	01°15'08"	151.91'	3.32'	3.32'	S. 61°45'28" E.