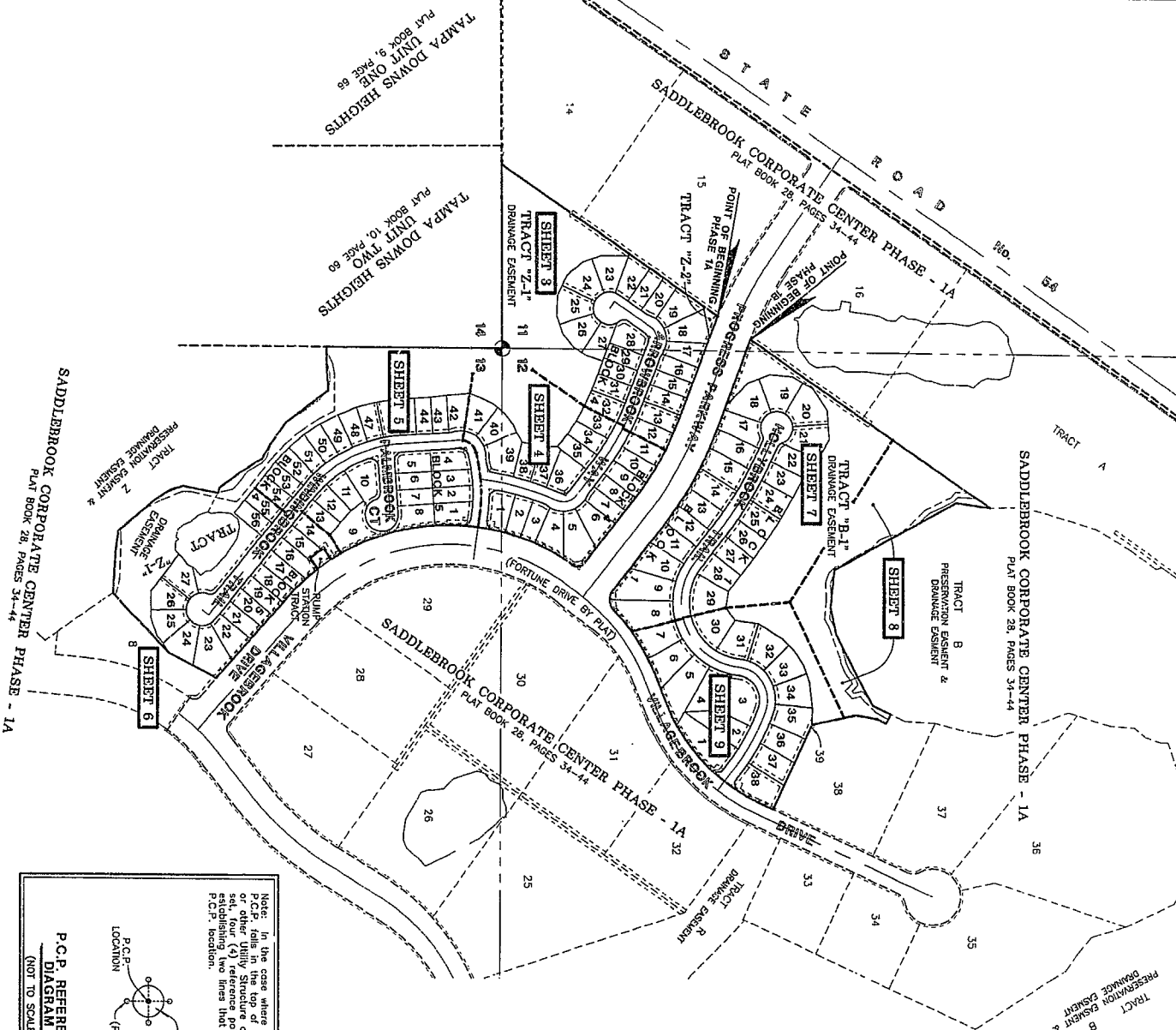
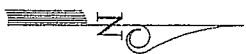


SADDLEBROOK VILLAGE WEST UNITS 1A AND 1B

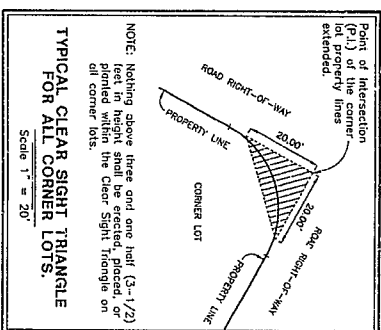
A REPLAT OF A PORTION OF LOTS 8, 38 AND 39 AND ALL OF LOTS 9 THROUGH 13 INCLUSIVE, AND ALL OF LOTS 17 AND 40, ACCORDING TO THE PLAT OF SADDLEBROOK CORPORATE CENTER PHASE-1A LYING IN SECTIONS 11, 12 AND 13, TOWNSHIP 26 SOUTH, RANGE 19 EAST, PASCO COUNTY, FLORIDA



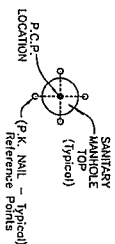
SCALE 1" = 200'
0 100 200 400
SCALE IN FEET



State Plane Coordinates as shown herein are in compliance with National Geodetic Survey standards with geodetic positions rigidly adjusted to the North America Datum of 1983 as readjusted in 1990.



Note: In the case where the location of a P.C.P. falls in the top of a Sanitary Manhole or other Utility Structure and it can not be established, two lines that intersect at the P.C.P. location.



P.C.P. REFERENCE
DIAGRAM
(NOT TO SCALE)

KEY SHEET

NOTE: REFER TO THE FOLLOWING SHEETS OF THIS PLAT FOR DETAIL DESCRIPTION AND DIMENSIONS.

2212 SWANN AVENUE
TAMPA, FLORIDA 33606
(813) 253-9311
HEDP & ASSOCIATES, INC.
CIVIL ENGINEERING
LAND SURVEYING