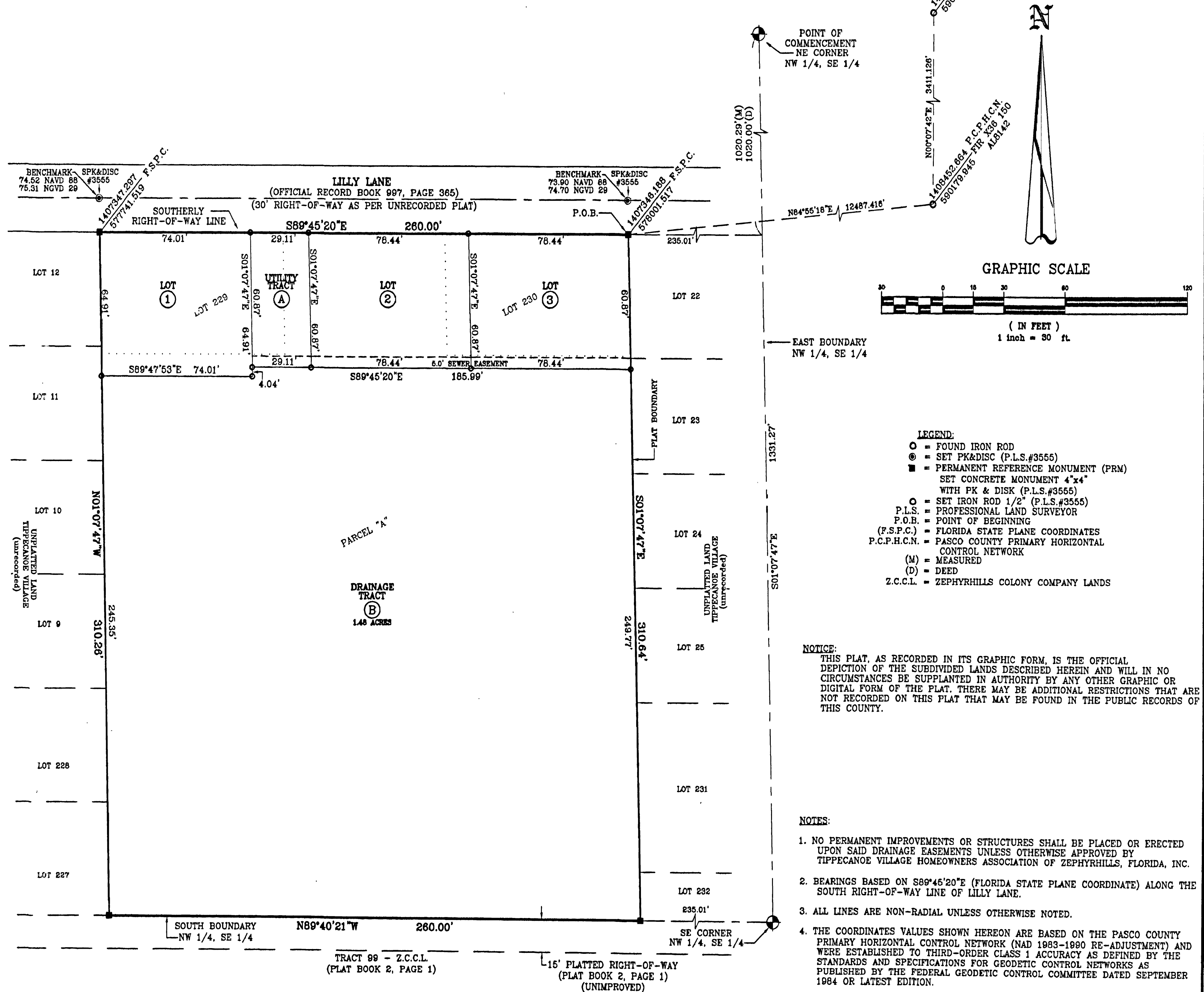


# TIPPECANOE VILLAGE ADDITION

PLAT BOOK 52 PAGE 54

A SUBDIVISION OF PARCEL "A" AND LOTS 229 AND 230 OF THE UNRECORDED PLAT OF TIPPECANOE VILLAGE, BEING A PORTION OF THE NW 1/4 OF THE SE 1/4 OF SECTION 19, TOWNSHIP 26 SOUTH, RANGE 21 EAST, PASCO COUNTY, FLORIDA.



PREPARED BY:  
**BILL R. BROWN P.L.S. LAND SURVEYING**  
 38351 HWY. 54 E.  
 ZEPHYRHILLS, FLORIDA 33542  
 PHONE (813) 788-6822 788-3077

SHEET 2 OF 2