

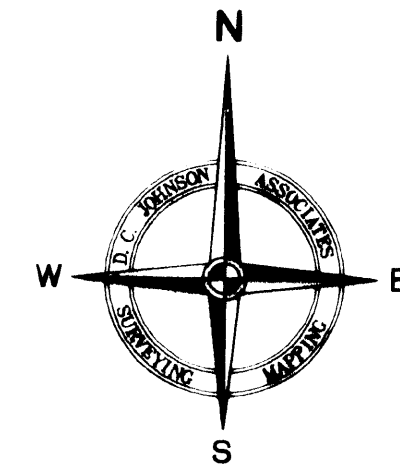
COUNTRY WALK INCREMENT E - PHASE 1

A PORTION OF SECTION 16, TOWNSHIP 26 SOUTH, RANGE 20 EAST
PASCO COUNTY, FLORIDA

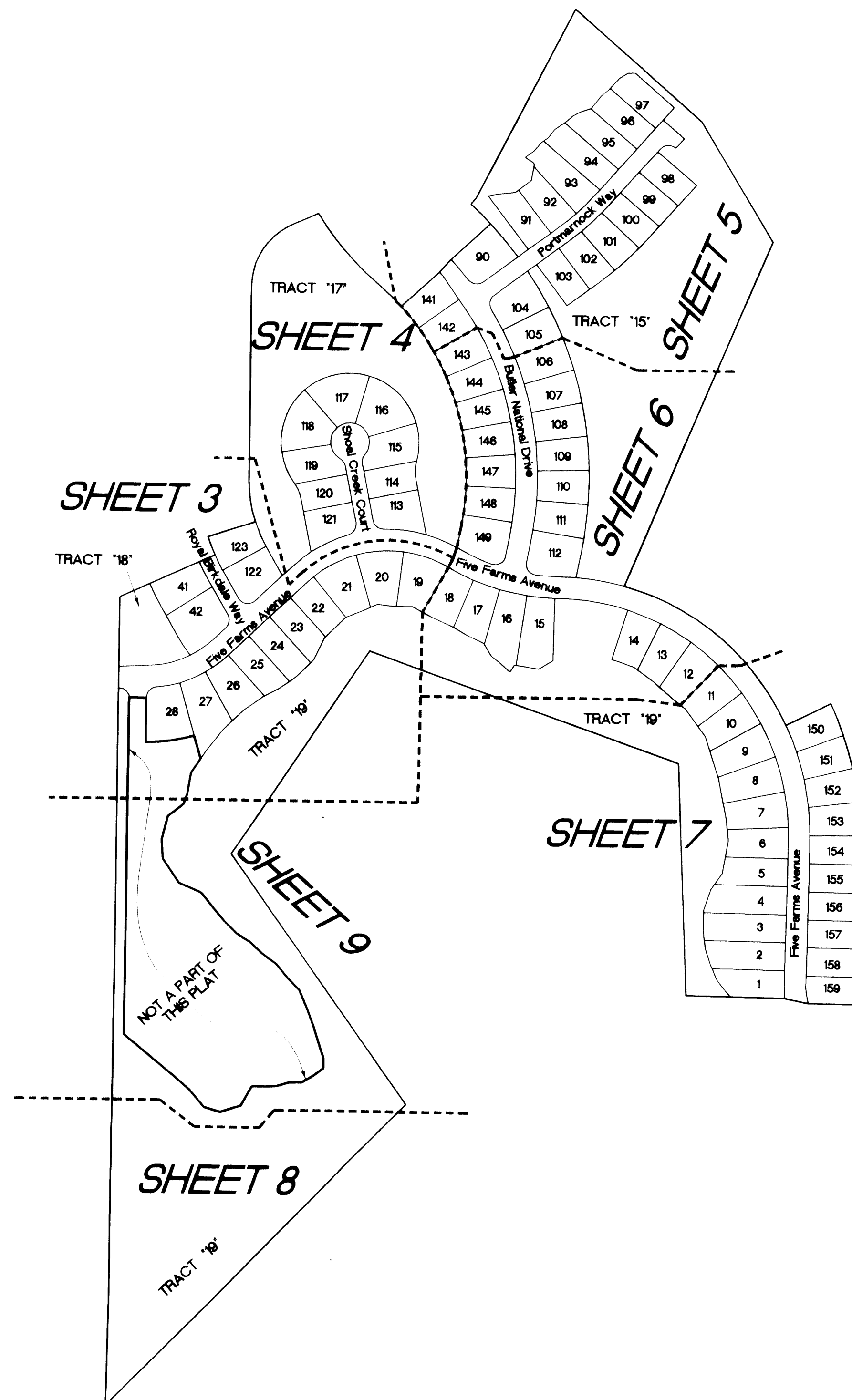
55
PLAT BOOK

76
PAGE

SHEET 2 OF 9



KEY MAP
NOT TO SCALE



CERTIFICATE OF TITLE

I, Richard M. Haber, of Cramer, Haber, McDonald, P.A., do hereby certify that the record title to the land as described and shown on this plat is in the name of the person, persons, corporation, or entity executing the dedication as shown on the plat. In the event the plat does not contain a dedication, I hereby certify that the developer of the platted subdivision has record title to the land. Additionally, I certify that there are no liens and/or encumbrances of record against said property, except as shown on said plat; and that the taxes for the year 2004 have been paid.

This the 2nd day of August, 2005.

Richard M. Haber, Esquire
Cramer, Haber, McDonald, P.A.

REVIEW OF PLAT BY PROFESSIONAL SURVEYOR AND MAPPER

Reviewed for compliance with chapter 177, Part 1, of the Florida Statutes on this the 11th day of AUGUST, 2005.

Hardowar Singh

Reviewed By: HARDOWAR SINGH
Florida Professional Surveyor and Mapper, License No. 4575

BOARD OF COUNTY COMMISSIONERS

This is to certify that on 30th day of Aug., 2005 the foregoing plat or plan was approved by the Board of County Commissioners.

Pat Men
Chairman of the Board of County Commissioners

CLERK OF THE CIRCUIT COURT

I hereby certify that the foregoing plat has been filed in the Public Records of Pasco County, Florida on this 35th day of Aug., 2005 in Plat Book 55.

Pages 75-83

Shirley Dulan
Clerk of the Circuit Court

NOTES:

- Bearings shown hereon are based on the West boundary of the Northwest 1/4 of Section 16, Township 26 South, Range 20 East, Pasco County, Florida. Said line bears S.00°01'34"W.
- The coordinate values shown hereon are based on the Pasco County Primary Horizontal Control Network (NAD 1983-1990 Re-adjustment) and were established to Third-Order Class I accuracy as defined by the Standards and Specifications for Geodetic Control Networks as published by the Federal Geodetic Control Committee dated September 1984 or latest edition.

JOHNSON
ASSOCIATES
SURVEYING AND MAPPING

11911 South Curley Street
San Antonio, Florida 33576
(352) 588-2768 Fax: (352) 588-2713