

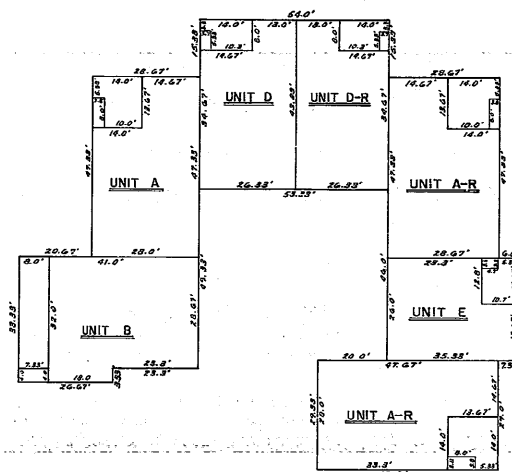
# COUNTRY OAKS I

A PORTION OF SECTION 34, TOWNSHIP 24 SOUTH, RANGE 16 EAST

# CONDOMINIUM

PASCO COUNTY, FLORIDA.

## PHASE I



TYPICAL PLAN FOR BUILDING II

FINISH FLOOR ELEV.=11.50'  
FINISH CEILING ELEV.=19.50'

I FURTHER CERTIFY that the construction of the improvements constituting Building II is substantially complete, such that the Condominium Plat, together with the provisions of the Declaration of Condominium describing the condominium property is an accurate representation of the location and dimensions of such improvements, and that the identification, location and dimensions of the common elements and of each unit therein can be determined from these materials.

C. FRED DEUEL & ASSOCIATES, INC.

*Bill R. Brown*  
BILL R. BROWN

Florida Registered Surveyor No. 3055

Date: 3/12, 1988