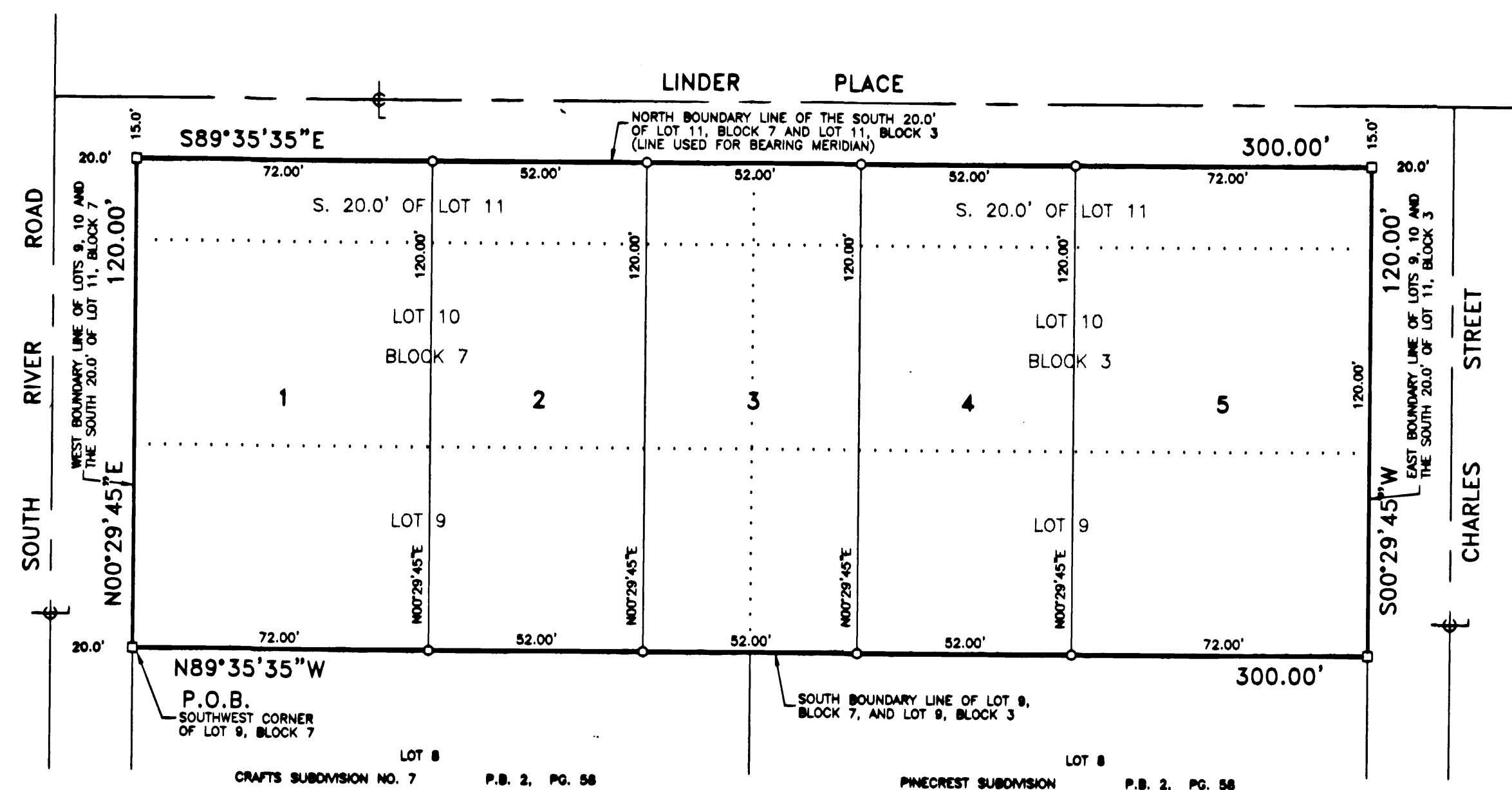
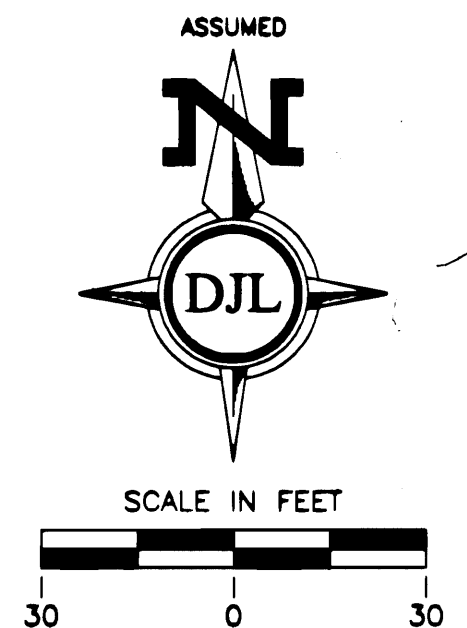


RICHLYNN SUBDIVISION

A REPLAT OF LOTS 9, 10 AND THE SOUTH 20.0 FEET OF LOT 11, BLOCK 3, PINECREST SUBDIVISION,
AND LOTS 9, 10 AND THE SOUTH 20.0 FEET OF LOT 11, BLOCK 7, CRAFTS SUBDIVISION NO. 7,
AS RECORDED IN PLAT BOOK 2, PAGE 58 OF THE PUBLIC RECORDS OF PASCO COUNTY, FLORIDA,
LYING IN SECTION 8, TOWNSHIP 26 SOUTH, RANGE 16 EAST, CITY OF NEW PORT RICHEY, PASCO COUNTY, FLORIDA.



ABBREVIATIONS

C1 = CURVE NUMBER
L1 = LINE NUMBER
P.B. = PLAT BOOK
PGS. = PAGES
NO. = NUMBER
N/N = NO NUMBER
(R) = RADIAL
(NR) = NOT RADIAL
O/A = OVERALL
W/C = WITNESS CORNER
D.E. = DRAINAGE EASEMENT
U.E. = UTILITY EASEMENT
P.O.B. = POINT OF BEGINNING
P.R.M. = PERMANENT REFERENCE MONUMENT
P.S.M. = PROFESSIONAL SURVEYOR & MAPPER

GENERAL NOTES

- 1.) ——— INDICATES FOUND PERMANENT REFERENCE MONUMENT (P.R.M.) L.S. 2689 UNLESS OTHERWISE NOTED.
- 2.) ——— INDICATES SET PERMANENT REFERENCE MONUMENT (P.R.M.) L.S. 2689
- 3.) ——— INDICATES SET PERMANENT CONTROL POINT (P.C.P.) L.S. 2689
- 4.) ——— INDICATES SET 1/2" IRON ROD (L.B. 5789)
- 5.) ——— INDICATES EASEMENTS WITH SIZE AND TYPE AS NOTED.
- 6.) ALL MEASUREMENTS ARE MADE TO THE NEAREST 100TH OF A FOOT.
- 7.) BEARING MERIDIAN ESTABLISHED FROM THE NORTH PLAT BOUNDARY LINE IN REFERENCE TO AN ASSUMED BEARING OF S89°35'35"E.

NOTICE

THIS PLAT, AS RECORDED IN ITS GRAPHIC FORM, IS THE OFFICIAL DEPICTION OF THE SUBDIVIDED LANDS DESCRIBED HEREIN AND WILL IN NO CIRCUMSTANCES BE SUPPLANTED IN AUTHORITY BY ANY OTHER GRAPHIC OR DIGITAL FORM OF THE PLAT. THERE MAY BE ADDITIONAL RESTRICTIONS THAT ARE NOT RECORDED ON THIS PLAT THAT MAY BE FOUND IN THE PUBLIC RECORDS OF PASCO COUNTY, FLORIDA.