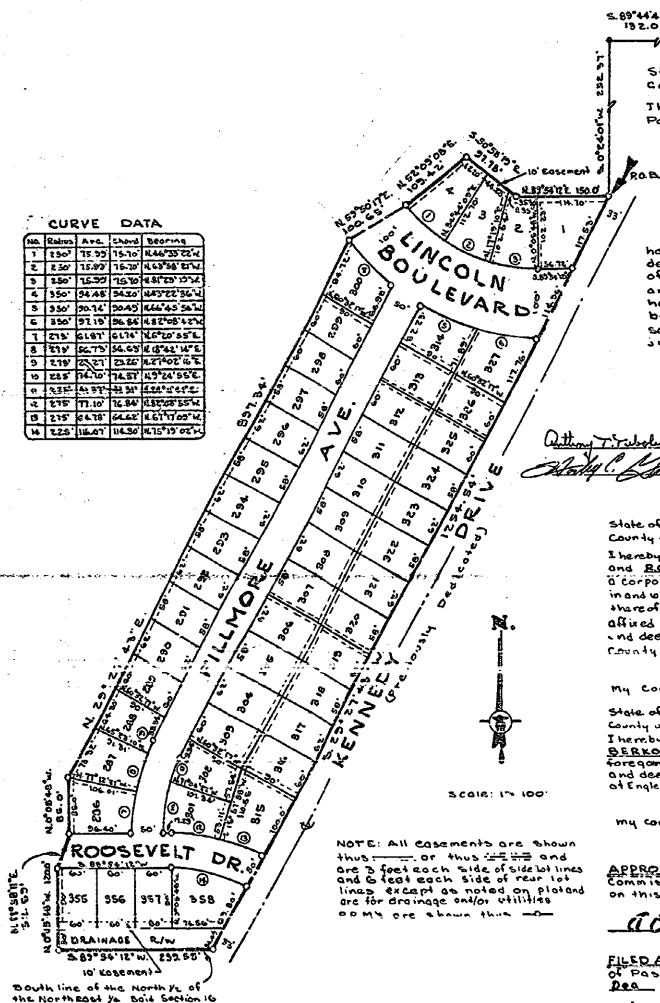





9/27

Stn	Radius	Ave.	Chord	Bearing
1	250'	75.93'	16.40'	N44°33'22"E
2	250'	75.93'	16.70'	S43°58'27"W
3	250'	75.93'	15.10'	S48°12'35"W
4	350'	94.48'	34.30'	N43°22'36"W
5	350'	90.16'	30.40'	S66°45'58"W
6	350'	97.18'	36.84'	S62°08'42"W
7	215'	61.91'	6.174'	S70°20'55"E
8	215'	56.75'	54.63'	N58°42'14"E
9	215'	26.21'	23.26'	N14°02'46"E
10	225'	74.10'	74.87'	N57°26'55"E
11	235'	41.97'	42.34'	S68°04'45"E
12	275'	77.10'	16.84'	S61°02'14"E
13	215'	64.18'	64.62'	S61°17'00"W
14	275'	77.16'	116.50'	N31°15'35"E



NOTE: All easements are shown  
thus:  or thus:  and  
are 3 feet each side of side lot lines  
and 6 feet each side of rear lot  
lines except as noted on plat and  
are for drainage and/or utilities  
00M4 are shown thus: 

AMERICAN ENGINEERING, INC.  
By C. C. Galt  
Florida Surgeon's Regn. No. 1099  
Thomas  
Exp. Florida Engineers Regn. No. 871