

ASBEL ESTATES PHASE 2

LYING IN SECTIONS 21 AND 22, TOWNSHIP 25 SOUTH, RANGE 18 EAST, PASCO COUNTY, FLORIDA

PLAT BOOK PAGE NO.

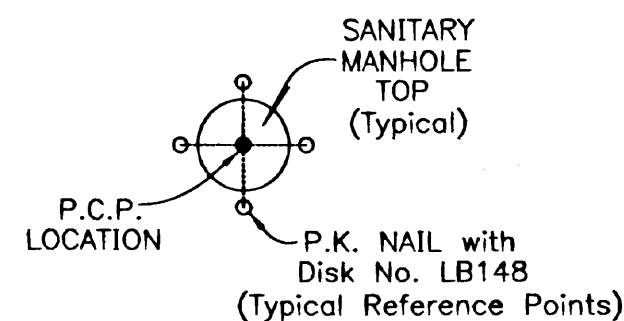
58 86

The coordinate values shown hereon are based on the Pasco County Primary Horizontal control Network and were established to Third Order Class I accuracy as defined by the Standards and Specifications for Geodetic Control Networks, as published by the Federal Geodetic Control Committee dated September 1984 or latest edition.

NOTICE: This plat, as recorded in its graphic form, is the official depiction of the subdivided lands described herein and will in no circumstances be supplanted in authority by any other graphic or digital form of the plat. There may be additional restrictions that are not recorded on this plat that may be found in the public records of this county.

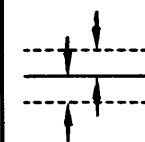
NOTE:
A 1/2 INCH DIAMETER IRON PIPE WITH CAP No. LB148 WILL BE SET AT EACH LOT CORNER AS REQUIRED BY CHAPTER 177 OF THE FLORIDA STATUTES WITHIN THE TIME ALLOTTED IN 177.091 (9).

Note: In the case where the location of a P.C.P. falls in the top of a Sanitary Manhole or other Utility Structure and it cannot be set, four (4) reference points are set establishing two lines that intersect at the P.C.P. location.

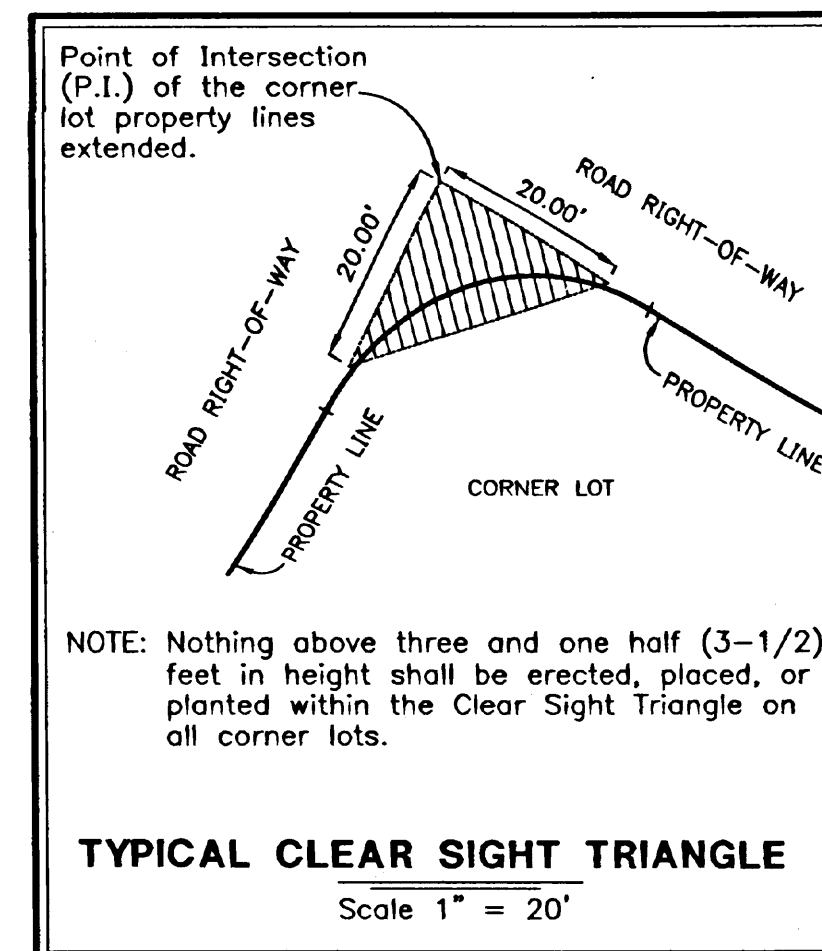


**P.C.P. REFERENCE
DIAGRAM**

(NOT TO SCALE)



NOTE: EASEMENTS, BUFFERS AND OTHER SUCH LABELS AND DIMENSIONS OF A PARALLEL NATURE AS SHOWN HEREON AND INDICATED TO THE NEAREST FOOT (IE: 5' UTILITY EASEMENT) ARE ASSUMED TO BE THE SAME DIMENSION EXTENDED TO THE NEAREST HUNDREDTH OF A FOOT WITH NO GREATER OR LESSER VALUE (IE: 5' = 5.00')



TYPICAL CLEAR SIGHT TRIANGLE

Scale 1" = 20'

CLERK OF THE CIRCUIT COURT:

I hereby certify, that the foregoing plat has been filed in the Public Records of Pasco County, Florida this 4th day of APRIL, 2006 AD in Plat Book 58, Pages 85-94

Durinda Dison
Clerk of the Circuit Court

BOARD OF COUNTY COMMISSIONERS:

This is to certify, that on MAR 28, 2006, the foregoing plat or plan was approved by the Board of County Commissioners of Pasco County, Florida.

John Li
Chairman of the Board of County Commissioners

SURVEYOR'S CERTIFICATE

Know all men by these presents, that the undersigned, being currently licensed by the State of Florida as a Professional Surveyor and Mapper, does hereby certify that this plat was prepared under my direction and supervision, and said plat complies with all survey requirements of Florida Statutes Chapter 177, Part I.

Signed and Sealed this 21st day of December, 2005

HEIDT & ASSOCIATES, INC.,
2212 Swann Avenue
Tampa, Florida 33606

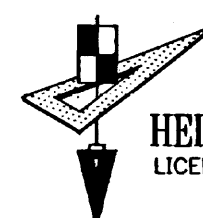
Arthur W. Merritt
Arthur W. Merritt
Professional Land Surveyor No. LS4498
Certificate of Authorization No. LB148



REVIEW OF PLAT BY REGISTERED SURVEYOR

Reviewed for compliance with Chapter 177, Part I, of the Florida Statutes on this the 18TH day of MARCH 2006

Harold W. Singh
Surveyor's Name HAROLD W. SINGH
Florida Professional Surveyor and Mapper No. 4576



2212 SWANN AVENUE
TAMPA, FLORIDA 33606
PHONE (813) 253-5311
FAX (813) 253-2478
HEIDT & ASSOCIATES, INC.
LICENSED BUSINESS NUMBER LB148
CIVIL ENGINEERING
LAND SURVEYING