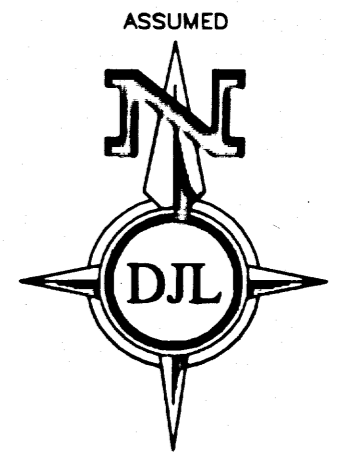


# COTEE RIVER HEIGHTS

A REPLAT OF LOTS 15,16, AND 17, BLOCK C, NEW PORT RICHEY ESTATES, AS SHOWN ON PLAT RECORDED IN PLAT BOOK 3, PAGE 79, OF THE PUBLIC RECORDS OF PASCO COUNTY, FLORIDA, LYING IN SECTION 32, TOWNSHIP 25 SOUTH, RANGE 16 EAST, CITY OF NEW PORT RICHEY, PASCO COUNTY, FLORIDA.

PLAT BOOK 58 PAGE 55



SCALE IN FEET  
20 0 20

## NOTICE

THIS PLAT, AS RECORDED IN ITS GRAPHIC FORM, IS THE OFFICIAL DEPICTION OF THERE MAY BE ADDITIONAL RESTRICTIONS THAT ARE NOT RECORDED ON THIS PLAT SUPPLANTED IN AUTHORITY BY ANY OTHER GRAPHIC OR DIGITAL FORM OF THE PLAT. THE SUBDIVIDED LANDS DESCRIBED HEREIN AND WILL IN NO CIRCUMSTANCES BE THAT MAY BE FOUND IN THE PUBLIC RECORDS OF PASCO COUNTY, FLORIDA.

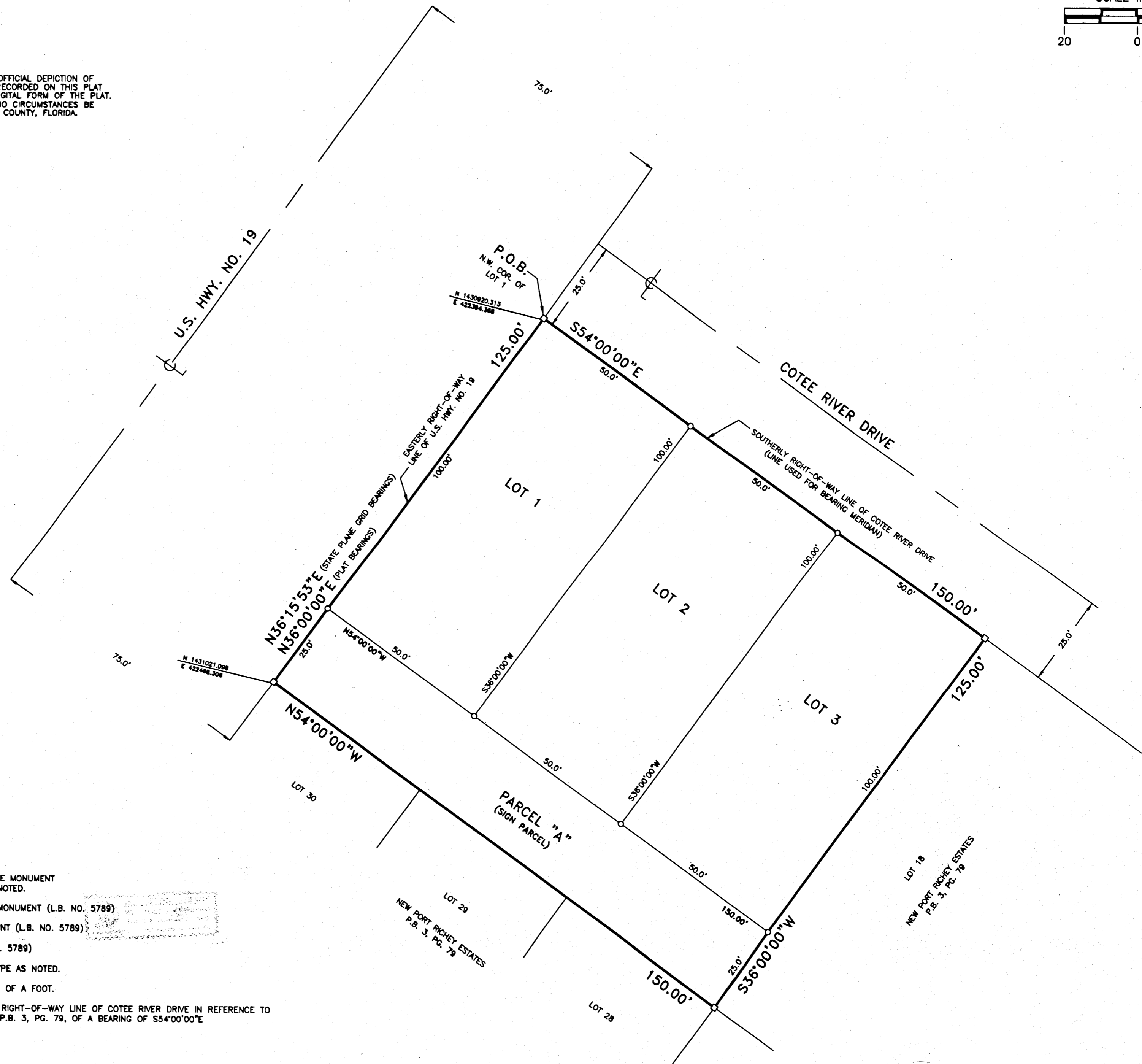
## ABBREVIATIONS

P.P. = PLAT BOOK  
P.S. = PAGES  
NO. = NUMBER  
N/N = NO NUMBER  
(R) = RADIAL  
(NR) = NOT RADIAL  
O/A = OVERALL  
W/C = WITNESS CORNER  
D.E. = DRAINAGE EASEMENT  
U.E. = UTILITY EASEMENT  
P.O.B. = POINT OF BEGINNING  
P.R.M. = PERMANENT REFERENCE MONUMENT  
P.S.M. = PROFESSIONAL SURVEYOR & MAPPER  
L.B. = LAND SURVEYOR BUSINESS

## GENERAL NOTES

- INDICATES FOUND PERMANENT REFERENCE MONUMENT (P.S.M. NO. 2689) UNLESS OTHERWISE NOTED.
- INDICATES SET PERMANENT REFERENCE MONUMENT (L.B. NO. 5789)
- INDICATES SET PERMANENT CONTROL POINT (L.B. NO. 5789)
- INDICATES SET 1/2" IRON ROD (L.B. NO. 5789)
- INDICATES EASEMENTS WITH SIZE AND TYPE AS NOTED.
- ALL MEASUREMENTS ARE MADE TO THE NEAREST 100TH OF A FOOT.
- BEARING MERIDIAN ESTABLISHED FROM THE SOUTHERLY RIGHT-OF-WAY LINE OF COTEE RIVER DRIVE IN REFERENCE TO DATA SHOWN ON PLAT IN NEW PORT RICHEY ESTATES, P.B. 3, PG. 79, OF A BEARING OF S54°00'00"E

**DJL SURVEYING COMPANY, INC.** (NO. L.B. 5789)  
8324 CORPORATE WAY (P.O. BOX 791) • NEW PORT RICHEY, FLORIDA 34656



SHEET 2 OF 2 SHEETS