

# AMBLEWOOD OF GULF TRACE

BEING A REPLAT OF TRACTS 3 THROUGH 8, 17 AND 20 OF TAMPA - TARPON SPRINGS LAND COMPANY SUBDIVISION  
PLAT BOOK 1, PAGES 68 - 70  
SECTION 25, TOWNSHIP 26 SOUTH, RANGE 15 EAST, PASCO COUNTY, FLORIDA

## ABBREVIATIONS

- IMPROVED SET PERMANENT REFERENCE MONUMENT (P.R.M.).
- IMPROVED FOUND PERMANENT REFERENCE MONUMENT (P.R.M.).
- SET PERMANENT CORNER POINT (S.C.P.).

## NOTE

BEARINGS BASED ON U.S. HIGHWAY 19 RIGHT OF WAY LINE BEING S02°22'00"W.

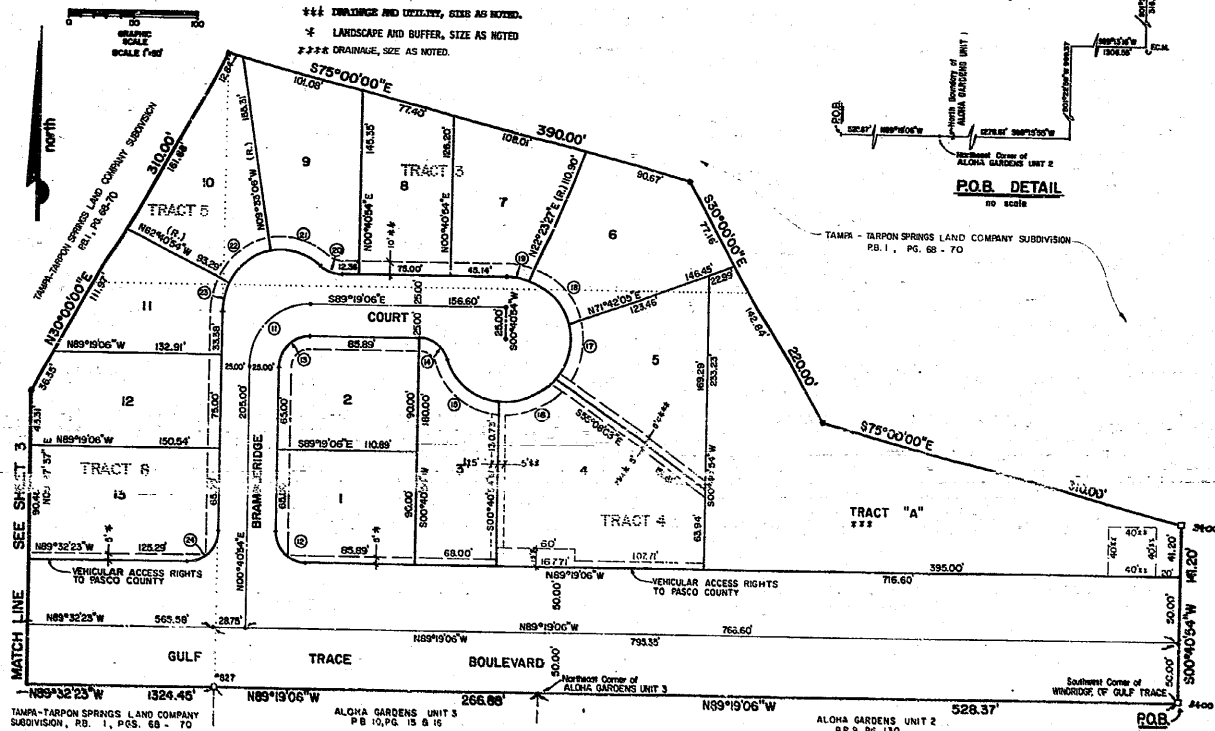
## LEGEND

- ++ UTILITY, SIZE AS NOTED.
- +++ DRAINAGE AND UTILITY, SIZE AS NOTED.
- \* LANDSCAPE AND BUFFER, SIZE AS NOTED.
- DRAINAGE, SIZE AS NOTED.

## NOTES

- 1 TRACTS "C" AND "D" ARE ENCUMBERED BY DRAINAGE AND/OR UTILITY EASEMENTS.
- 2 TRACTS "C" AND "D" ARE ENCUMBERED BY DRAINAGE EASEMENTS.
- 3 TRACTS "A", "B", "C" AND "D" WILL BE DECEDED TO THE HOMEOWNERS ASSOCIATION ALONG WITH MAINTENANCE RESPONSIBILITIES.

SEE SHEET 7 OF 7 FOR CURVE DATA.



KING ENGINEERING ASSOCIATES, INC.  
Engineers • Planners • Surveyors