

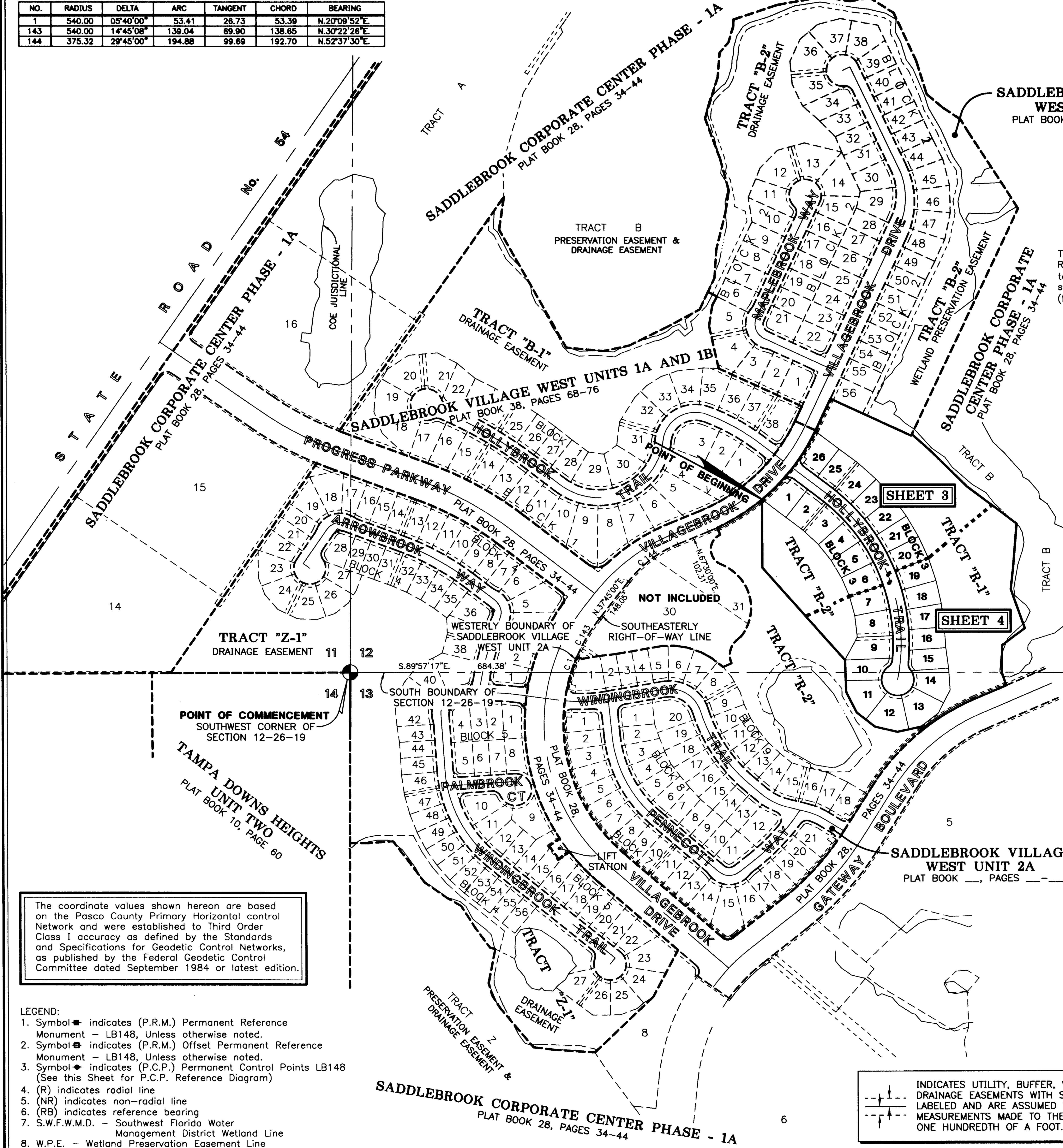
SADDLEBROOK VILLAGE WEST UNIT 2B

PLAT BOOK 43 PAGE NO. 98

A REPLAT OF ALL OF TRACT "R" AND A PORTION OF LOTS 25, 26, 31 AND 32
ACCORDING TO THE PLAT OF SADDLEBROOK CORPORATE CENTER PHASE-1A,
LYING IN SECTIONS 12 AND 13, TOWNSHIP 26 SOUTH, RANGE 19 EAST, PASCO COUNTY, FLORIDA

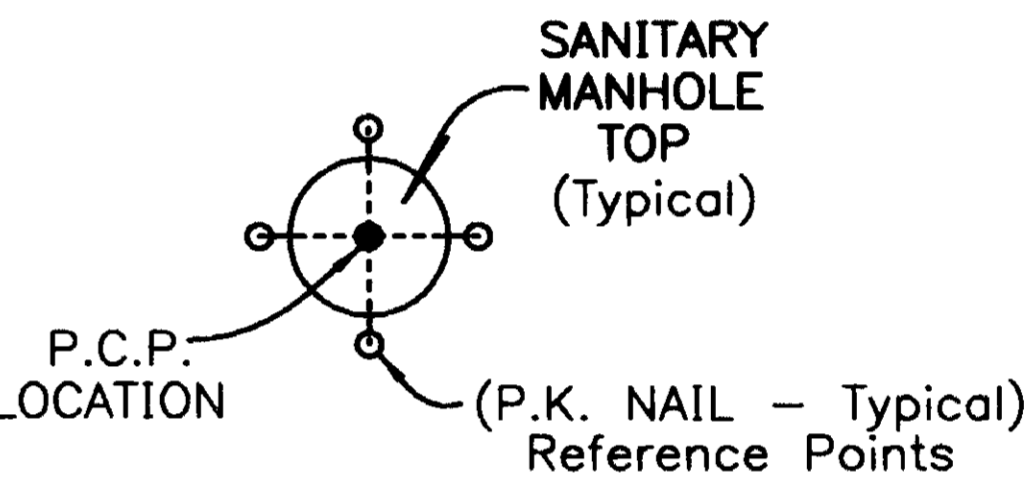
CURVE DATA TABLE

NO.	RADIUS	DELTA	ARC	TANGENT	CHORD	BEARING
1	540.00	05°40'00"	53.41	26.73	53.39	N.20°09'52"E.
143	540.00	14°45'08"	139.04	69.90	138.65	N.30°22'26"E.
144	375.32	29°45'00"	194.88	99.69	192.70	N.52°37'30"E.

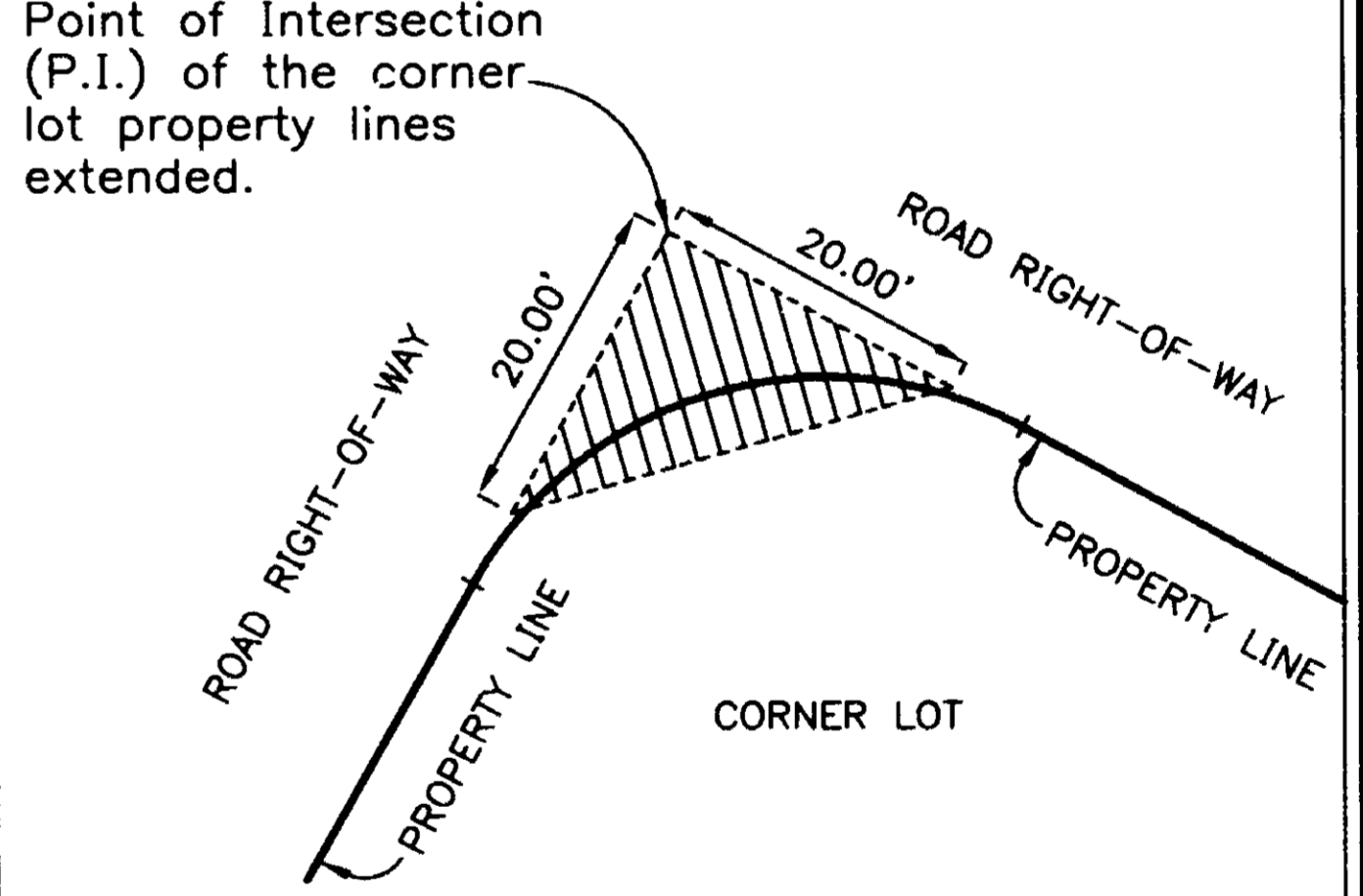


BASIS OF BEARINGS
The South Boundary of Section 12, Township 26 South, Range 19 East, Pasco County, Florida, is assumed to have a Grid bearing of S.89°57'17"E. The Grid bearings shown hereon refer to the State Plane Coordinate System (NAD 83-1990 ADJUSTMENT) for the West Zone of Florida.

Note: In the case where the location of a P.C.P. falls in the top of a Sanitary Manhole or other Utility Structure and it can not be set, four (4) reference points are set establishing two lines that intersect at the P.C.P. location.



P.C.P. REFERENCE DIAGRAM
(NOT TO SCALE)



NOTE: Nothing above three and one half (3-1/2) feet in height shall be erected, placed, or planted within the Clear Sight Triangle on all corner lots.

TYPICAL CLEAR SIGHT TRIANGLE FOR ALL CORNER LOTS.
Scale 1" = 20'

The coordinate values shown hereon are based on the Pasco County Primary Horizontal control Network and were established to Third Order Class I accuracy as defined by the Standards and Specifications for Geodetic Control Networks, as published by the Federal Geodetic Control Committee dated September 1984 or latest edition.

- LEGEND:**
1. Symbol indicates (P.R.M.) Permanent Reference Monument - LB148, Unless otherwise noted.
 2. Symbol indicates (P.R.M.) Offset Permanent Reference Monument - LB148, Unless otherwise noted.
 3. Symbol indicates (P.C.P.) Permanent Control Points LB148 (See this Sheet for P.C.P. Reference Diagram)
 4. (R) indicates radial line
 5. (NR) indicates non-radial line
 6. (RB) indicates reference bearing
 7. S.W.F.W.M.D. - Southwest Florida Water Management District Wetland Line
 8. W.P.E. - Wetland Preservation Easement Line

INDICATES UTILITY, BUFFER, WETLAND BUFFER, DRAINAGE EASEMENTS WITH SIZE AND TYPE AS LABELED AND ARE ASSUMED TO HAVE MEASUREMENTS MADE TO THE NEAREST ONE HUNDREDTH OF A FOOT.

KEY SHEET

NOTE: REFER TO THE FOLLOWING SHEETS OF THIS PLAT FOR DETAILED LABELLING AND DIMENSIONING.



2212 SWANN AVENUE
TAMPA, FLORIDA 33606
PHONE (813) 253-5311
FAX (813) 253-2478

HEIDT & ASSOCIATES, INC.
LICENSED BUSINESS NUMBER LB148
CIVIL ENGINEERING
LAND SURVEYING