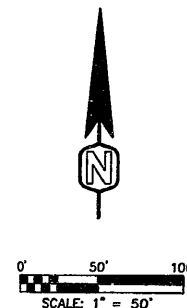
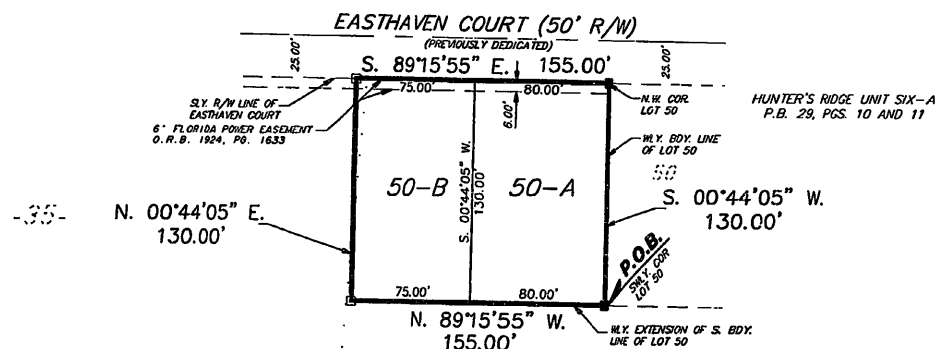


HUNTER'S RIDGE UNIT SIX-C

A REPLAT OF A PORTION OF TRACTS 34 AND 35 OF TAMPA-TARPON SPRINGS LAND COMPANY SUBDIVISION OF SECTION 11, TOWNSHIP 26 SOUTH, RANGE 16 EAST, AS SHOWN ON THE PLAT RECORDED IN PLAT BOOK 1, PAGES 68, 69 AND 70 OF THE PUBLIC RECORDS OF PASCO COUNTY, FLORIDA.



TAMPA-TARPON SPRINGS LAND COMPANY SUBDIVISION
P.B. 1, PGS. 68, 69 AND 70

NOTES

- EASEMENTS ARE SHOWN THIS AND THIS AND ARE FOR DRAINAGE AND/OR UTILITIES, UNLESS OTHERWISE SHOWN.
- BEARINGS SHOWN HEREON ARE BASED ON THE ASSUMED BEARING OF SOUTH 89°15'55\"/>

ABBREVIATIONS

WLY.	WESTERLY
BOY.	BOUNDARY
SLY.	SOUTHERLY
P.B.	PLAT BOOK
R/W	RIGHT-OF-WAY
SWLY.	SOUTHWESTERLY
O.R.B.	OFFICIAL RECORD BOOK