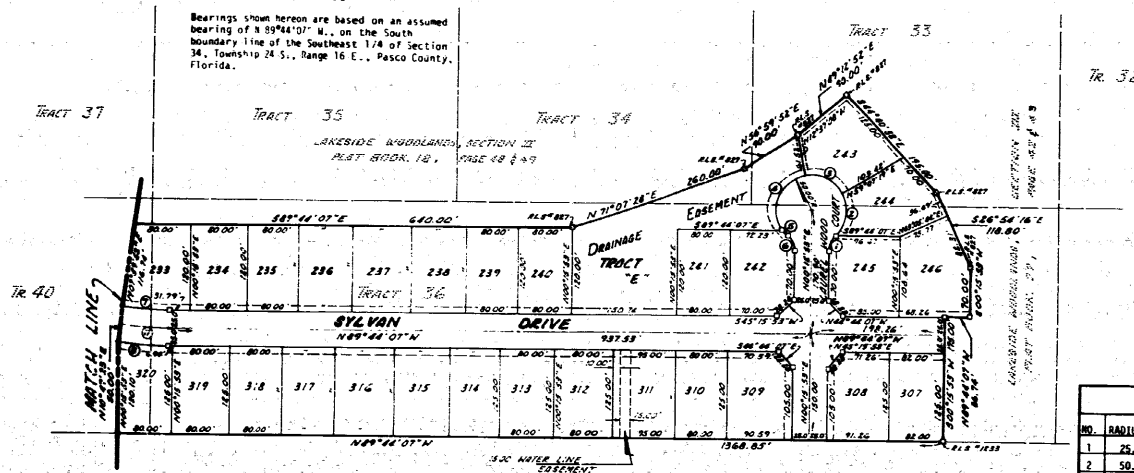


LAKEVIEW WOODLANDS SECTION V

A REPLAT OF A PORTION OF TRACTS 33, 34 AND 36 THRU 40 PORT RICHEY LAND COMPANY AS RECORDED IN PLAT BOOK 1, PAGE 60 and 61 PUBLIC RECORDS OF PASCO COUNTY, FLORIDA. LYING IN THE SOUTHEAST 1/4 OF SECTION 34, TOWNSHIP 24 SOUTH, RANGE 16 EAST, PASCO COUNTY, FLORIDA.



Bearings shown hereon are based on an assumed bearing of N 89°44'07\"/>



CURVE DATA					
NO.	RADIUS	ARC	DELTA	CHORD	PIR. ANG.
1	25.00'	21.03'	88°11'23"	20.41'	88°31'16\"/>

- NOTES:
- (1) Permanent Reference Monuments (PRM's) are indicated thus:
 - (2) Easements are indicated thus:
- Front lot easements are 10 ft.
Rear and side lot easements are 5 ft.
unless otherwise indicated and are
for utility and/or drainage purposes.

C. Fred Deuel and Associates, Inc.
CONSULTING ENGINEERS (LAND PLANNERS) (LAND SURVEYORS)
51 PETERSBURG • HUDSON • ERIE • MILLER • CLEMMATON