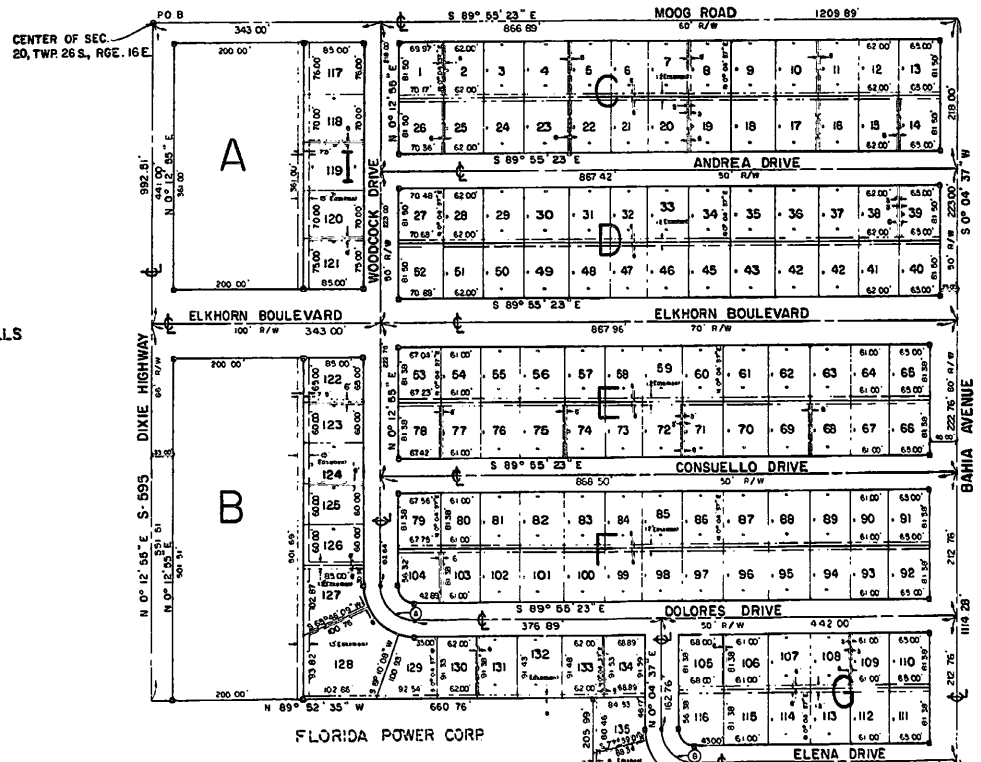


11/27

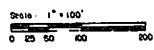
LA VILLA GARDENS UNIT I

PASCO COUNTY, FLORIDA
SECTION 20, TOWNSHIP 26 SOUTH, RANGE 16 EAST

COLONIAL HILLS
SUBDIVISION



COLONIAL HILLS
SUBDIVISION



LA VILLA GARDENS
FUTURE
UNIT 4

NOTE

All side lot easements are 6' - (3' each side of lot line).
All rear lot easements are 12' - (6' each side of lot line).
UNLESS OTHERWISE NOTED

• - Denotes P.H.M.

LOT NO.	RADIUS	ARC	CHORD	BEARING
104	25 00'	39 33'	35 60'	N 44° 51' 16" W
116	25 00'	39 27'	35 36'	N 44° 53' 23" W
127	75 00'	32 00'	31 76'	S 12° 00' 28" E
128	75 00'	61 00'	59 35'	S 47° 51' 48" E
129	75 00'	23 00'	24 88'	S 80° 22' 49" E
135	75 00'	15 83'	15 80'	N 09° 58' 07" W
136	75 00'	62 00'	60 25'	N 35° 41' 54" W
137	75 00'	39 89'	39 51'	N 74° 59' 07" W
142	253 25'	87 00'	85 50'	N 02° 45' 54" W
A	50 00'	79 50'	79 00'	N 44° 51' 14" W
B	50 00'	70 54'	70 71'	S 44° 51' 23" E
C	103 25'	89 10'	87 41'	S 2° 20' 13" E

FLORIDA POWER R/W