

# THOUSAND OAKS EAST PHASES II AND III

A SUBDIVISION OF A PORTION OF SECTION 36, TOWNSHIP 26 SOUTH, RANGE 16 EAST  
PASCO COUNTY, FLORIDA

46/41

## NOTES:

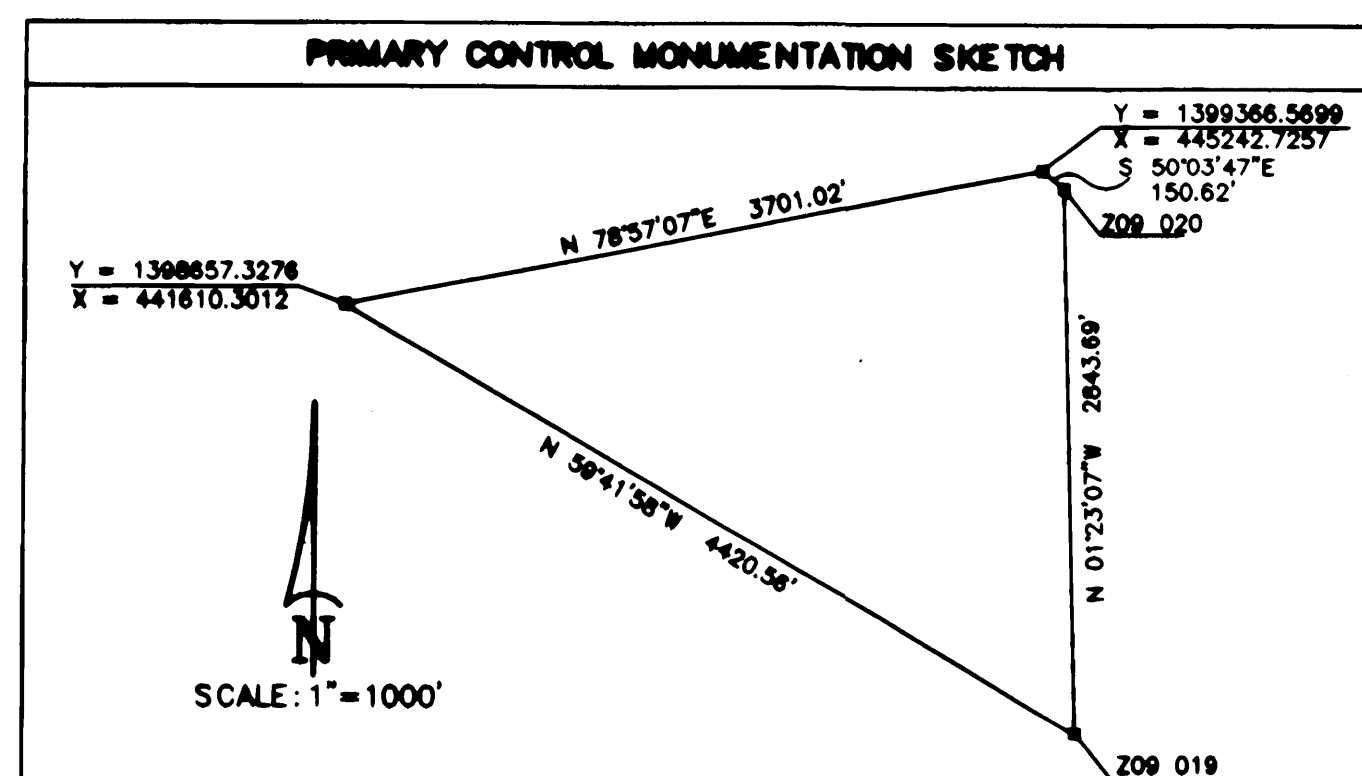
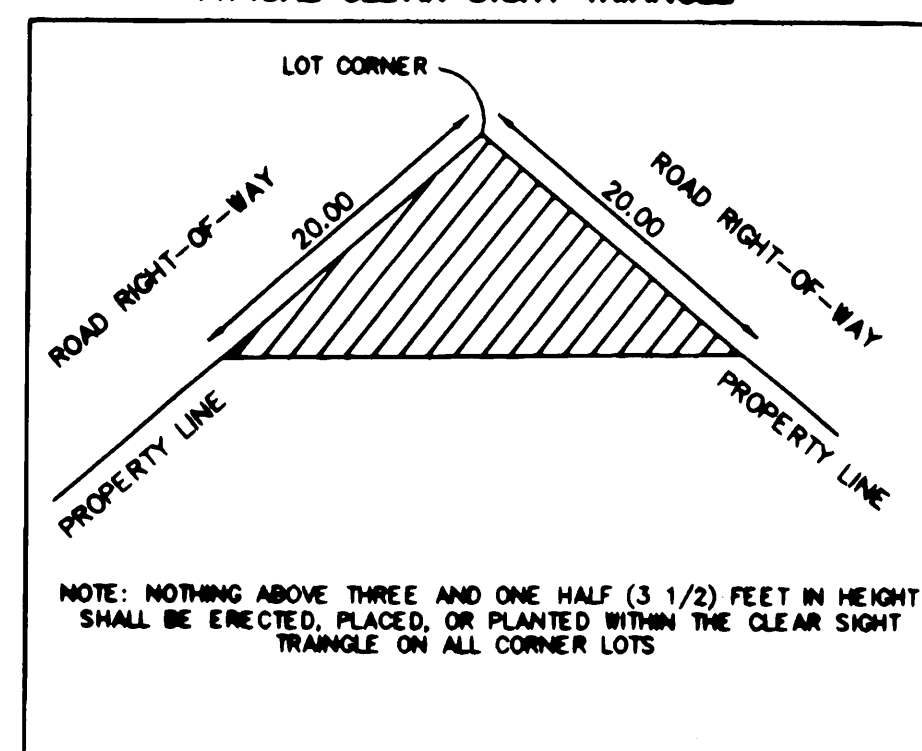
1. BEARINGS SHOWN HEREON ARE BASED ON THE EASTERLY RIGHT-OF-WAY LINE OF LITTLE ROAD ASSUMED AS BEING S.00°39'16"W.
2. NOTICE: THIS PLAT, AS RECORDED IN ITS GRAPHIC FORM, IS THE OFFICIAL DEPICTION OF THE SUBDIVIDED LANDS DESCRIBED HEREIN AND WILL IN NO CIRCUMSTANCES BE SUPPLANTED IN AUTHORITY BY ANY OTHER GRAPHIC OR DIGITAL FORM OF THE PLAT. THERE MAY BE ADDITIONAL RESTRICTIONS THAT ARE NOT RECORDED ON THIS PLAT THAT MAY BE FOUND IN THE PUBLIC RECORDS OF THIS COUNTY.
3. THE COORDINATE VALUES SHOWN HEREON ARE BASED ON THE PASCO COUNTY PRIMARY HORIZONTAL CONTROL NETWORK AND WERE ESTABLISHED TO THIRD-ORDER CLASS 1 ACCURACY AS DEFINED BY THE STANDARDS AND SPECIFICATIONS FOR GEODETIC CONTROL NETWORKS, AS PUBLISHED BY THE FEDERAL GEODETIC CONTROL COMMITTEE DATED SEPTEMBER 1984 OR LATEST EDITION.  
  
COORDINATE VALUES SHOWN ARE BASED ON PASCO COUNTY FIRST ORDER CONTROL POINT Z09 019 AND PASCO COUNTY FIRST ORDER CONTROL POINT Z09 020. THESE GRID VALUES ARE NORTH AMERICAN DATUM 1983/1990, FLORIDA WEST ZONE 0902, IN FEET CONVERTED USING 3.28083333.
4. ALL OPEN SPACE, DRAINAGE AREAS, RETENTION AND DETENTION PONDS, COMMON AREAS, BUFFER AREAS AND PRESERVATION AREAS ARE TO BE CONVEYED TO THE THOUSAND OAKS HOMEOWNERS ASSOCIATION, INC.
5. ALL LINES ALONG CURVES ARE RADIAL UNLESS OTHERWISE NOTED (NR).

60 30 0 60  
SCALE: 1"=60'

LINE	BEARING	DISTANCE
L1	S 00°43'32"W	532.00'
L2	N 89°41'38"W	54.33'
L3	N 28°07'41"W	10.04'
L4	S 66°58'56"W	15.06'
L5	N 28°07'41"W	20.26'

CURVE	DELTA	RADIUS	ARC	CHORD	TANGENT	CHORD BEARING
C1	5'04"58"	285.00	25.28	25.27	12.85	S 89°32'15"W
C2	5'04"58"	255.00	22.62	22.61	11.32	S 89°32'15"W
C3	23°27'09"	335.00	137.12	136.17	69.54	N 11°26'59"W
C4	23°27'09"	200.00	81.86	81.29	41.51	N 11°26'59"W
C5	7°46'54"	225.00	30.56	30.54	15.30	N 03°36'17"W
C6	15°08'35"	225.00	59.47	59.29	29.91	N 15°04'01"W
C7	0°31'40"	225.00	2.07	2.07	1.04	N 22°30'09"W
C8	1°19'13"	175.00	4.03	4.03	2.02	N 22°30'22"W
C9	22°07'56"	175.00	67.60	67.18	34.23	N 10°46'48"W
C10	1°29'45"	2300.00	60.05	60.05	30.03	N 15°38'19"W
C11	0°29'51"	335.00	2.91	2.91	1.45	N 22°55'37"W
C12	15°08'47"	335.00	88.56	88.30	44.54	N 15°08'18"W
C13	7°48'30"	335.00	45.65	45.62	22.86	N 03°37'39"W
C14	15°32'42"	2300.00	624.02	622.10	313.93	S 07°07'05"E

## TYPICAL CLEAR SIGHT TRIANGLE



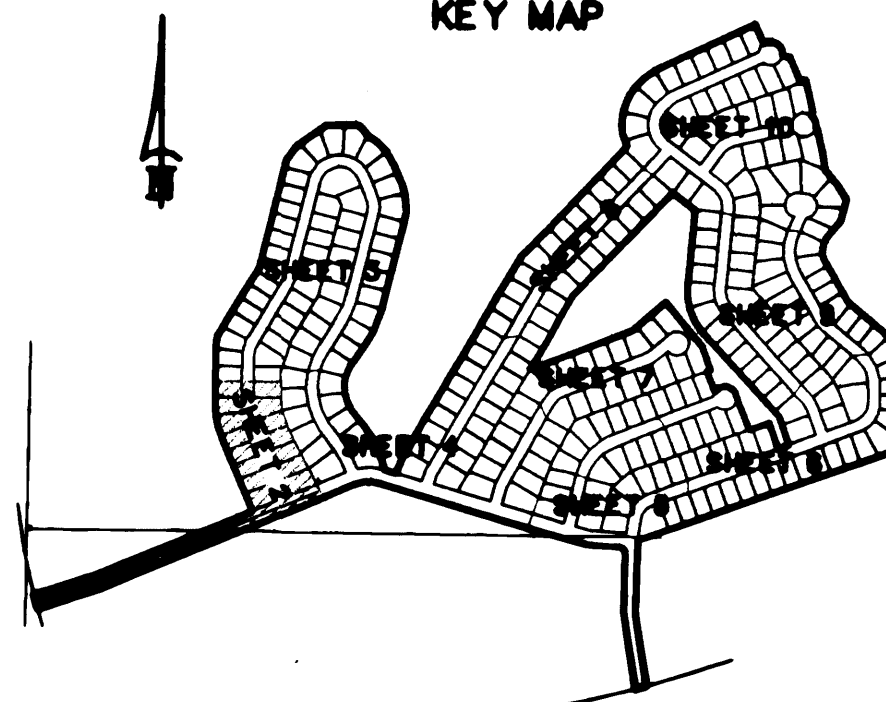
WEST 1/4 CORNER OF SECTION 36, TOWNSHIP 26, SOUTH RANGE 16 EAST  
FOUND CONCRETE MONUMENT L.S. 1303

S 89°28'48"E 738.68'  
S 89°28'48"E 2844.94' O/A

O.R. BOOK 4815 PAGE 627

DRAINAGE, RETENTION, INGRESS/EGRESS EASEMENT, O.R. BOOK 5057 PAGE 1054

## KEY MAP



## LEGEND

- = PERMANENT CONTROL POINT SET LB6113
- = PERMANENT REFERENCE MONUMENT SET LB # 6113
- = SET IRON ROD 1/2" LB # 6113
- = FOUND CONCRETE MONUMENT LB 6113
- (R) = RADIAL LINE
- (NR) = NON - RADIAL LINE
- P.O.B. = POINT OF BEGINNING
- FN&D = FOUND NAIL & DISK
- O.R. BOOK = OFFICIAL RECORD BOOK
- O/A = OVERALL
- (TYP) = TYPICAL
- ℄ = CENTERLINE

**POLARIS** ASSOCIATES INC.

PROFESSIONAL SURVEYING  
2915 S.W. 104th AVE., SUITE 100  
CLEARWATER, FLORIDA 33769  
(727) 888-0822

SHEET 2 OF 10