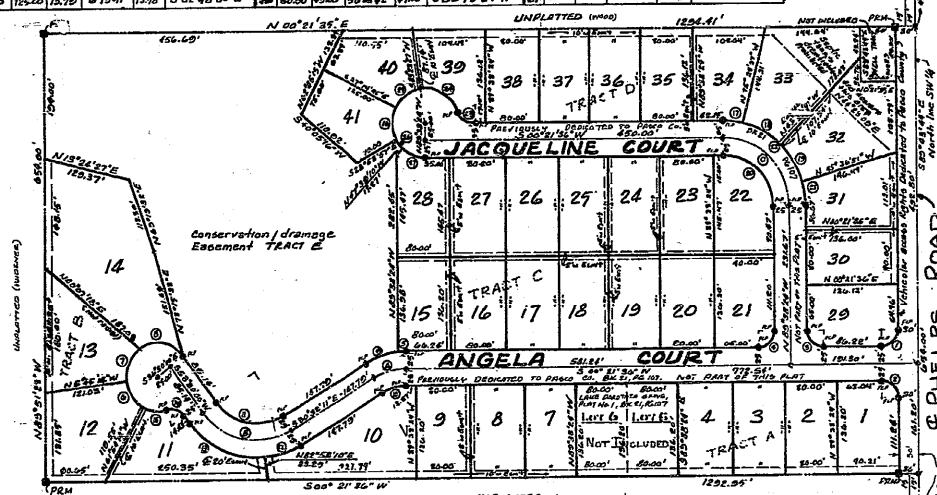


CURVE TABLE				CURVE TABLE			
NO.	RAD.	ARC	Δ	CHORD BEADINGS	7	8	9
1	100.00	53.01	30°53'47"	53.01	53.01	53.01	53.01
2	100.00	53.01	30°53'47"	53.01	53.01	53.01	53.01
3	100.00	53.01	30°53'47"	53.01	53.01	53.01	53.01
4	100.00	53.01	30°53'47"	53.01	53.01	53.01	53.01
5	100.00	53.01	30°53'47"	53.01	53.01	53.01	53.01
6	100.00	53.01	30°53'47"	53.01	53.01	53.01	53.01
7	100.00	53.01	30°53'47"	53.01	53.01	53.01	53.01
8	100.00	53.01	30°53'47"	53.01	53.01	53.01	53.01
9	100.00	53.01	30°53'47"	53.01	53.01	53.01	53.01
10	100.00	53.01	30°53'47"	53.01	53.01	53.01	53.01
11	100.00	53.01	30°53'47"	53.01	53.01	53.01	53.01
12	100.00	53.01	30°53'47"	53.01	53.01	53.01	53.01
13	100.00	53.01	30°53'47"	53.01	53.01	53.01	53.01
14	100.00	53.01	30°53'47"	53.01	53.01	53.01	53.01
15	100.00	53.01	30°53'47"	53.01	53.01	53.01	53.01
16	100.00	53.01	30°53'47"	53.01	53.01	53.01	53.01
17	100.00	53.01	30°53'47"	53.01	53.01	53.01	53.01
18	100.00	53.01	30°53'47"	53.01	53.01	53.01	53.01
19	100.00	53.01	30°53'47"	53.01	53.01	53.01	53.01
20	100.00	53.01	30°53'47"	53.01	53.01	53.01	53.01
21	100.00	53.01	30°53'47"	53.01	53.01	53.01	53.01
22	100.00	53.01	30°53'47"	53.01	53.01	53.01	53.01
23	100.00	53.01	30°53'47"	53.01	53.01	53.01	53.01
24	100.00	53.01	30°53'47"	53.01	53.01	53.01	53.01
25	100.00	53.01	30°53'47"	53.01	53.01	53.01	53.01
26	100.00	53.01	30°53'47"	53.01	53.01	53.01	53.01
27	100.00	53.01	30°53'47"	53.01	53.01	53.01	53.01
28	100.00	53.01	30°53'47"	53.01	53.01	53.01	53.01
29	100.00	53.01	30°53'47"	53.01	53.01	53.01	53.01
30	100.00	53.01	30°53'47"	53.01	53.01	53.01	53.01
31	100.00	53.01	30°53'47"	53.01	53.01	53.01	53.01
32	100.00	53.01	30°53'47"	53.01	53.01	53.01	53.01
33	100.00	53.01	30°53'47"	53.01	53.01	53.01	53.01
34	100.00	53.01	30°53'47"	53.01	53.01	53.01	53.01
35	100.00	53.01	30°53'47"	53.01	53.01	53.01	53.01
36	100.00	53.01	30°53'47"	53.01	53.01	53.01	53.01
37	100.00	53.01	30°53'47"	53.01	53.01	53.01	53.01
38	100.00	53.01	30°53'47"	53.01	53.01	53.01	53.01
39	100.00	53.01	30°53'47"	53.01	53.01	53.01	53.01
40	100.00	53.01	30°53'47"	53.01	53.01	53.01	53.01
41	100.00	53.01	30°53'47"	53.01	53.01	53.01	53.01



LAKE DOROTHEA GROVE PLAT NO. 2 PASCO COUNTY, FLORIDA A RESUBDIVISION OF TRACTS A, B, C, D, E OF LAKE DOROTHEA GROVE, PLAT NO. 1, IN THE NW 1/4 OF THE SW 1/4 OF SECTION 27, TOWNSHIP 25 SOUTH, RANGE 21 EAST

LEGEND:
■ PERMANENT REFERENCE MONUMENT
○ PERMANENT CONTROL POINT FOUND
--- EASEMENT FOR UTILITY
--- EASEMENT FOR DRAINAGE, WIDTH AS
NOTED, UNLESS OTHERWISE SHOWN
ON PLAT.

BEARINGS ARE BASED ON THE
ASTRONOMIC BEARING OF THE
NORTH LINE OF THE SW 1/4
OF SECTION 27, T25S, R21E

SCALE: 1"=100'
GRAPHIC SCALE

LEGAL DESCRIPTION & DEDICATION:
State of Florida }
County of Pasco }
The undersigned, owner of the lands shown on this
plat to be known as LAKE DOROTHEA GROVE, PLAT NO. 2, a
resubdivision of a portion of Lake Dorothea Grove, Plat
No. 1, in the Northwest Quarter of the Southwest Quarter
of Section 27, Township 25 South, Range 21 East, Pasco
County, Florida, being further described as follows:
Tract A, tract B, tract C, tract D, and tract E,
Lake Dorothea Grove, Plat No. 1, according to the plat
thereof recorded in Plat Book 21, Page 101 of the
public records of Pasco County, Florida.

Have caused said land to be divided and subdivided
as shown hereon; and do hereby dedicate to the perpetual
use of the public and Pasco County, Florida, all street
rights-of-way and easements as shown and depicted hereon
and further do hereby dedicate to the perpetual use of
the public and Pasco County, Florida, all lands upon
which or within which utility improvements or facilities
exist; and further do hereby dedicate to the perpetual use
of the public and Pasco County, Florida, all utility
improvements and facilities including but not limited to
water or sewer lines or pipes, fire hydrants,
lift stations, pumping stations, buildings, sewage
disposal plants, other utility plants and other appur-
tenant facilities, lying within or upon the lands depicted
on this plat and shown on as-built plans filed with
the County for such lands; and further do hereby reserve
unto itself, its heirs, successors, assigns or legal
representatives, the right to construct, operate and
maintain all such dedicated lands, streets, utility
improvements or facilities and appurtenances until such
time as the operation and maintenance of said lands,
improvements, facilities and appurtenances is assumed by
Pasco County, Florida; and further do hereby reserve
unto itself, its heirs, successors assigns or legal
representatives, including but not limited to the
private utility furnishing water and sewer services and
appurtenances thereto, the title to any lands or
improvements dedicated to the public or to the County
if for any reason such dedication shall be either
voluntarily or involuntarily vacated or invalidated.

This the 18th day of JULY, 1983.

MORTGAGEE: FIRST BANK OF PASCO COUNTY
James S. Schuchman, Jr.
Vice President
President
Signed, Sealed and Delivered in the Presence of
Sharon J. Nelson
Assistant Cashier
James S. Schuchman, Jr.
Witness for both
James S. Schuchman, Jr.
Witness for both
ACKNOWLEDGEMENT:
State of Florida }
County of Pasco }
I hereby certify on this 13th day of July, A.D., 1983,
before me personally appeared James S. Schuchman, Jr.
and Sharon J. Nelson, President and Assistant Cashier
respectively of the aforesaid mortgage, to me known to be the persons
described in and who executed the foregoing certificate and dedication
and severally acknowledged the execution thereof to be their free act and deed for the uses and purposes therein
expressed.
Witness my hand and official seal at Zephyrhills,
Pasco County, Florida, the day and year aforesaid
My commission expires 5-31-86
Glenn M. Bowers
Notary Public, State of Florida at Large

CERTIFICATE OF TITLE:
State of Florida }
County of Pasco }
I, James S. Schuchman, Jr. of Pasco Abstract Company
herby certify that the Owner and Mortgagee of Record of this
property lying within the parcel described on this Plat are as
shown on said Plat, that there are no liens and/or encumbrances
of record against said property, except as shown on said Plat;
and that the taxes for the year 1982 have been paid.
This the 15th day of July, 1983
Pasco Abstract Company
By: James S. Schuchman, Jr.
ACKNOWLEDGEMENT
State of Florida }
County of Pasco }
I hereby certify on this 18th day of July, A.
D., 1983, before me personally appeared Roy J. Brown to
me known to be the person described in and who
executed the foregoing certificate and dedication and
he acknowledged the execution thereof to be his free
act and deed for the uses and purposes therein expressed.
Witness my hand and official seal at Zephyrhills,
Florida, the day and year aforesaid.
My commission expires 5-11-86
Quint B. A. Dille
Notary Public, State of Florida at Large

Signed and sealed in the
presence of:
Roy J. Brown
Roy J. Brown, Owner
James S. Schuchman, Jr.
Witness
Sharon J. Nelson
Witness

SURVEYOR'S CERTIFICATE:
I hereby certify on this 6th day of July, A.D., 1983 that
this plat is a true and correct representation of the lands
surveyed and that the survey was made under my supervision and
that the survey data complies with all the requirements of
Chapter 177 of the Florida Statutes.
Paul E. Hagler
Paul E. Hagler
Florida Surveyor's Regn. No. 2753

BOARD OF COUNTY COMMISSIONERS CERTIFICATE:
APPROVED:
By the Board of County Commissioners of Pasco County, Florida,
on this 25th day of October, 1983.
Shirley V. G. Luna
Chairman

CLERK OF THE CIRCUIT COURT CERTIFICATE:
FILED AND RECORDED:
In the Public Records of Pasco County, Florida, on this 26th
day of October, 1983, in Plat Book 22, Page 20.
John Pittman
Clerk of the Circuit Court
By: W. D. Swan
Deputy Clerk