

36182

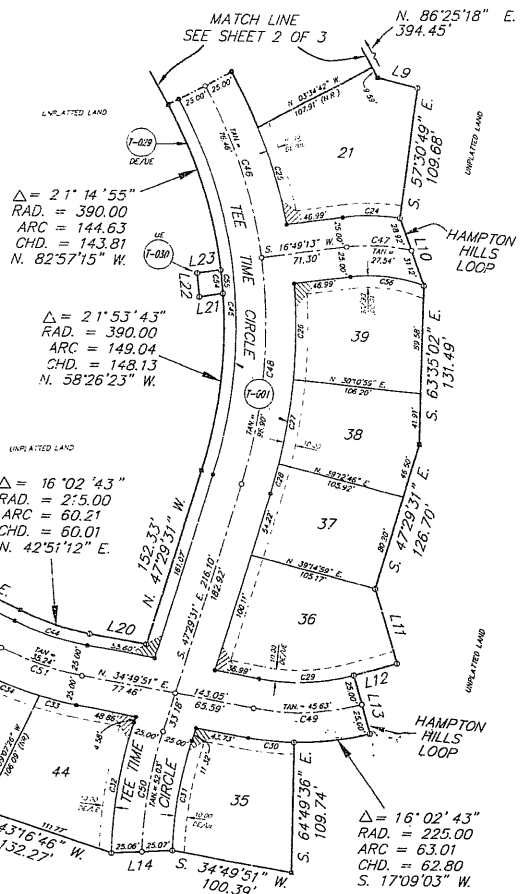
RIVER RIDGE COUNTRY CLUB PHASE 1, UNIT 1-A

A SUBDIVISION OF A PORTION OF SECTION 32, TOWNSHIP 25 SOUTH, RANGE 17 EAST, PASCO COUNTY, FLORIDA



NUMBER	BEARING	RADIUS	ARC	CHORD	CHORD BEARING
C14	N. 125°18'54"	175.00	47.85	42.70	S. 24°39'12" W.
C25	N. 104°55'51"	458.00	114.83	85.91	S. 35°18'08" E.
C26	N. 107°04'41"	450.00	79.84	79.83	S. 64°54'21" W.
C27	S. 03°10'46"	140.00	20.92	20.81	S. 35°18'08" E.
C28	S. 03°10'43"	140.00	23.88	23.88	S. 49°18'08" E.
C29	S. 29°12'32"	175.00	78.30	72.80	S. 71°58'24" W.
C30	S. 01°10'28"	235.00	12.92	12.92	S. 71°58'24" W.
C31	N. 12°30'29"	133.00	34.11	34.79	N. 55°49'16" E.
C32	N. 07°11'18"	135.00	119.49	112.07	N. 36°50'20" E.
C33	N. 06°10'41"	125.00	31.28	31.71	N. 48°58'12" E.
C34	S. 08°13'02"	275.00	45.26	45.17	N. 48°58'12" E.
C35	N. 17°24'11"	224.00	62.13	62.16	S. 41°17'50" E.
C36	S. 02°10'35"	275.00	12.15	12.15	S. 32°27'25" W.
C37	N. 12°14'20"	175.00	42.12	42.60	S. 24°39'12" W.
C38	S. 08°17'19"	175.00	18.61	18.61	S. 24°39'12" W.
C39	N. 12°04'49"	225.00	42.44	42.34	N. 04°34'52" W.
C40	N. 12°19'29"	225.00	60.10	59.81	N. 04°34'52" W.
C41	N. 14°52'41"	225.00	57.97	57.87	N. 21°48'12" E.
C42	N. 02°52'15"	125.00	28.29	28.29	N. 31°41'00" E.
C43	N. 14°17'50"	150.00	43.77	43.14	N. 42°51'12" E.
C44	N. 16°31'41"	160.00	63.01	62.80	N. 42°51'12" E.
C45	N. 08°15'11"	160.00	32.74	31.14	N. 30°31'14" E.
C46	S. 02°10'35"	125.00	14.31	14.14	S. 27°12'00" E.
C47	S. 02°10'35"	125.00	14.31	14.14	S. 27°12'00" E.
C48	S. 02°10'35"	125.00	14.31	14.14	S. 27°12'00" E.
C49	S. 02°10'35"	125.00	14.31	14.14	S. 27°12'00" E.
C50	N. 12°54'19"	160.00	89.12	88.91	S. 21°58'42" W.
C51	N. 12°54'19"	160.00	89.12	88.91	S. 21°58'42" W.
C52	N. 12°54'19"	160.00	89.12	88.91	S. 21°58'42" W.
C53	N. 12°54'19"	160.00	89.12	88.91	S. 21°58'42" W.
C54	N. 12°54'19"	160.00	89.12	88.91	S. 21°58'42" W.
C55	N. 12°54'19"	160.00	89.12	88.91	S. 21°58'42" W.
C56	N. 12°54'19"	160.00	89.12	88.91	S. 21°58'42" W.
C57	N. 12°54'19"	160.00	89.12	88.91	S. 21°58'42" W.
C58	N. 12°54'19"	160.00	89.12	88.91	S. 21°58'42" W.
C59	N. 12°54'19"	160.00	89.12	88.91	S. 21°58'42" W.
C60	N. 12°54'19"	160.00	89.12	88.91	S. 21°58'42" W.
C61	N. 12°54'19"	160.00	89.12	88.91	S. 21°58'42" W.
C62	N. 12°54'19"	160.00	89.12	88.91	S. 21°58'42" W.
C63	N. 12°54'19"	160.00	89.12	88.91	S. 21°58'42" W.
C64	N. 12°54'19"	160.00	89.12	88.91	S. 21°58'42" W.
C65	N. 12°54'19"	160.00	89.12	88.91	S. 21°58'42" W.
C66	N. 12°54'19"	160.00	89.12	88.91	S. 21°58'42" W.
C67	N. 12°54'19"	160.00	89.12	88.91	S. 21°58'42" W.
C68	N. 12°54'19"	160.00	89.12	88.91	S. 21°58'42" W.
C69	N. 12°54'19"	160.00	89.12	88.91	S. 21°58'42" W.
C70	N. 12°54'19"	160.00	89.12	88.91	S. 21°58'42" W.

NUMBER	BEARING	DISTANCE
L9	N. 86°25'18" E.	34.27
L10	S. 57°30'49" E.	66.89
L11	S. 82°57'15" E.	64.74
L12	S. 03°10'43" E.	64.81
L13	S. 03°10'43" E.	50.00
L14	S. 21°28'29" W.	50.13
L15	S. 03°10'43" E.	70.81
L16	S. 31°17'27" W.	22.43
L17	S. 03°10'43" E.	64.80
L18	S. 10°52'22" E.	76.04
L19	N. 14°44'03" E.	36.84
L20	N. 14°44'03" E.	66.86
L21	N. 16°12'51" E.	19.85
L22	N. 16°12'51" E.	20.81
L23	N. 16°12'51" E.	18.85



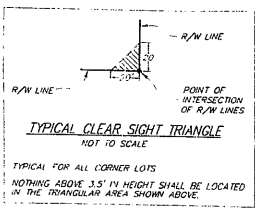
$\Delta = 21^\circ 14' 55"$
 RAD. = 390.00
 ARC = 144.63
 CHD. = 143.81
 N. 82°57'15" W.

$\Delta = 21^\circ 53' 43"$
 RAD. = 390.00
 ARC = 149.04
 CHD. = 148.13
 N. 58°26'23" W.

$\Delta = 16^\circ 02' 43"$
 RAD. = 215.00
 ARC = 60.21
 CHD. = 60.01
 N. 42°51'12" E.

$\Delta = 16^\circ 02' 43"$
 RAD. = 225.00
 ARC = 63.01
 CHD. = 62.80
 S. 17°09'03" W.

- LEGEND**
- CHD = CHORD
 - RAD = RADIUS
 - CON = CORNER
 - BOY = BOUNDARY
 - PB = PLAT BOOK
 - R/W = RIGHT-OF-WAY
 - ∠ = CENTRAL ANGLE
 - = REFERENCE POINT
 - U.E. = UTILITY EASEMENT
 - P.O.B. = POINT OF BEGINNING
 - D.C. = DRAINAGE EASEMENT
 - O.R.B. = OPTICAL RECORD BOOK
 - C.E. = CONSERVATION EASEMENT
 - = 5/8" GAPPED IRON ROD 1/8"-1 1/2"
 - = 4"x4" CONCRETE MONUMENT FROM 4286"
 - = PERMANENT CONTROL POINT
 - U.E. = PRESSURE AND EGRESS EASEMENT



PREPARED BY:
CBC
CASSON ENGINEERING COMPANY
 SURVEYORS AND MAPPERS
 CERTIFICATE OF AUTHORIZATION NUMBER LB-731
 6321 GRAND BOULEVARD, NEW PORT RICHEY, FLORIDA
 (813) 845-7588