

SAUNDERS ROAD SUBDIVISION

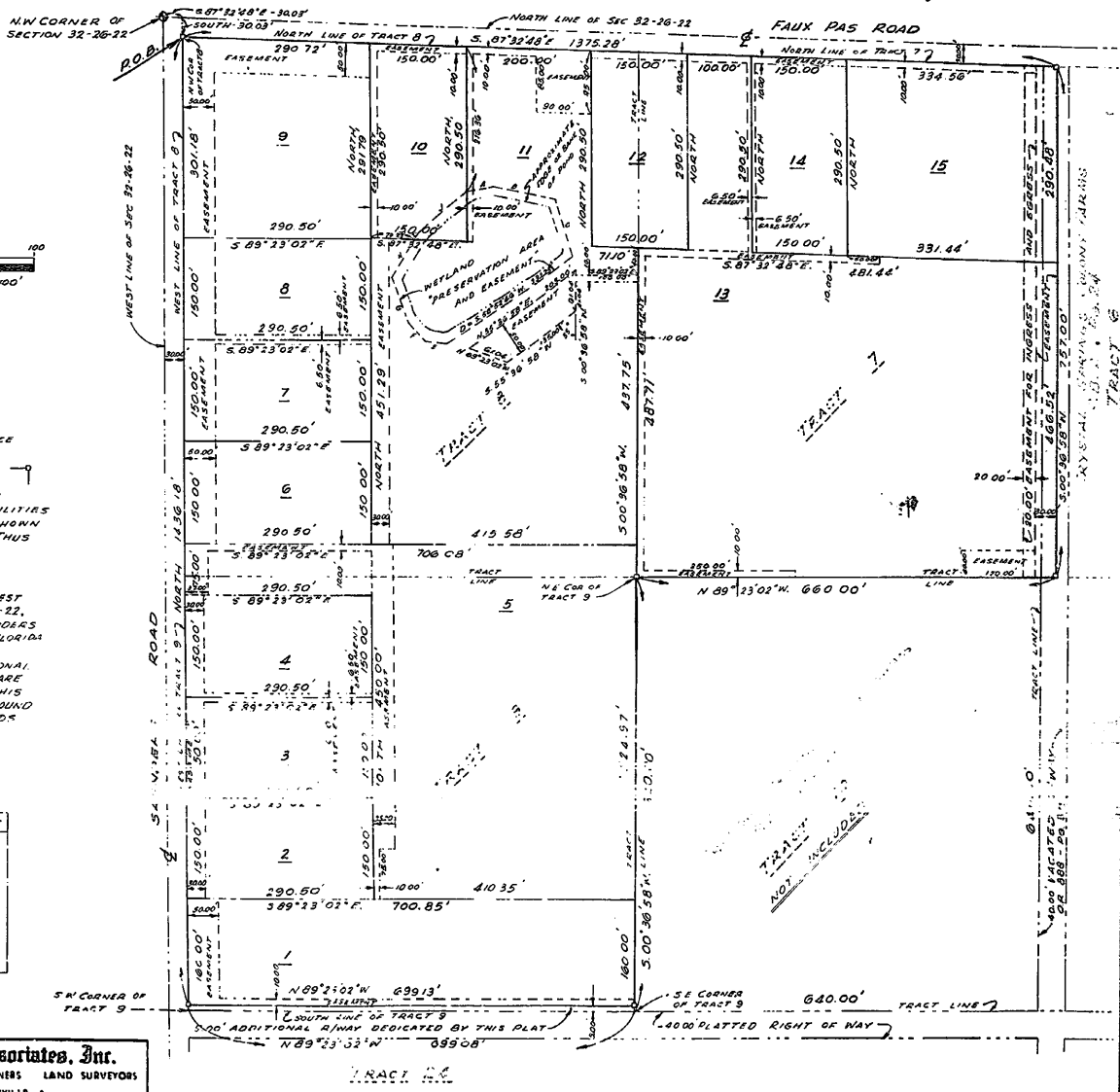
A REPLAT OF TRACTS 7, 8 & 9, CRYSTAL SPRINGS COLONY FARMS AS RECORDED
 IN PLAT BOOK 2, PAGE 24 OF THE PUBLIC RECORDS OF PASCO COUNTY, FLORIDA;
 BEING A PORTION OF SECTION 32, TOWNSHIP 26 SOUTH, RANGE 22 EAST, PASCO COUNTY, FLORIDA.



GENERAL NOTES

1. PERMANENT REFERENCE MONUMENT (P.R.M.'s) ARE INDICATED THUS
2. EASEMENTS ARE FOR DRAINAGE AND/OR UTILITIES UNLESS OTHERWISE SHOWN AND ARE INDICATED THUS
3. BASIS OF BEARINGS HELD "NORTH" ON WEST LINE OF SEC. 32-26-22, CENTERLINE OF SAUNDERS ROAD, PASCO COUNTY, FLORIDA
4. THERE MAY BE ADDITIONAL RESTRICTIONS THAT ARE NOT RECORDED ON THIS PLAT THAT MAY BE FOUND IN THE PUBLIC RECORDS OF PASCO COUNTY, FLORIDA.

LINE	BEARING	DISTANCE
A	N 00° 30' 09" E	41.89'
B	S 76° 03' 02" E	100.84'
C	S 21° 13' 56" E	34.56'
D	S 36° 51' 00" N	122.12'
E	N 02° 21' 23" W	49.38'
F	N 44° 05' 37" W	38.89'
G	N 20° 58' 29" W	72.41'
H	N 32° 40' 01" E	68.04'
I	N 32° 40' 01" E	87.51'
J	N 43° 40' 00" E	36.16'



C. Fred Bevel and Associates, Inc.
 CONSULTING ENGINEERS LAND PLANNERS LAND SURVEYORS
 OF PETERSBURG • LANDSBERG • DENVERVILLE