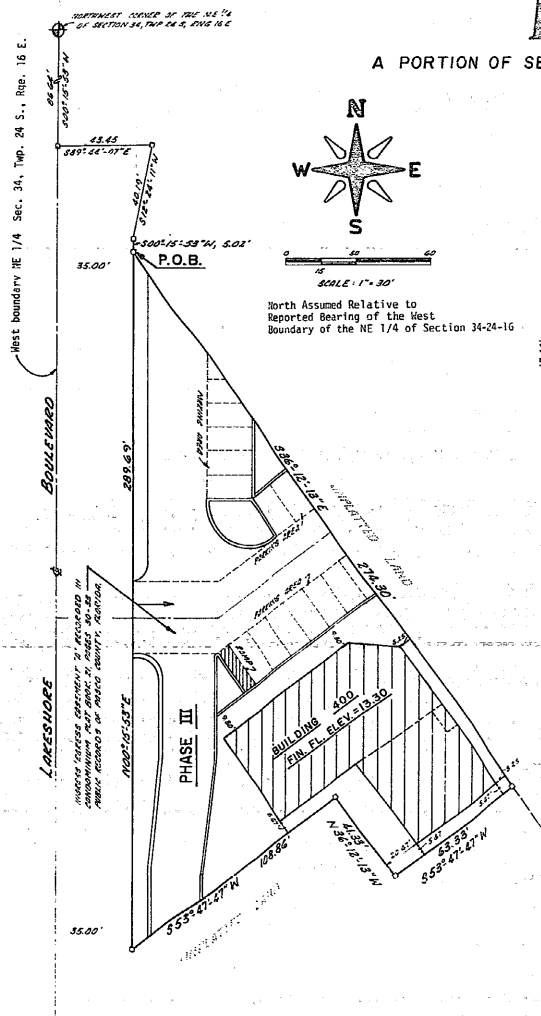
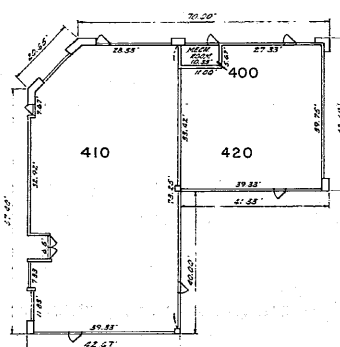


LAKE SIDE OFFICE PARK I A CONDOMINIUM PHASE III

A PORTION OF SECTION 34, TOWNSHIP 24 SOUTH, RANGE 16 EAST,
PASCO COUNTY, FLORIDA.



North Assumed Relative to
Reported Bearing of the West
Boundary of the NE 1/4 of Section 34-24-16



TYPICAL PLAN FOR BUILDING 400

FINISH FLOOR ELEVATION = 13.30 M.S.L.
SCALE: 1" = 20'

DEDICATION:

KNOW ALL MEN BY THESE PRESENTS, that I, LARRY R. MARSH, General Partner of MARCO, LTD., a Florida limited Partnership, owner of the land described hereon, have caused the land embraced in this plat and the easement to be surveyed, laid out, and platted as PHASE III of LAKE SIDE OFFICE PARK I, A CONDOMINIUM, pursuant to Florida Statute 718.104.

MARCO, LTD.

LARRY R. MARSH, General Partner

WITNESS

WITNESS

ACKNOWLEDGMENT:

STATE OF FLORIDA }
COUNTY OF PINELLAS } S.S.

I HEREBY CERTIFY ON THIS 25th DAY OF June 1983, A.D., 1983, before me personally appeared LARRY R. MARSH, General Partner of Marco, Ltd., a Florida limited Partnership, to be known to be the person described in and who executed the foregoing certificate and dedication and acknowledged the execution thereof to be his free act and deed for the uses and purposes therein expressed.

WITNESS MY HAND AND OFFICIAL SEAL at PINELLAS County, Florida, the day and year aforesaid.

My Commission Expires: 7-29-85

Notary Public, State of Florida at Large

SURVEYOR'S CERTIFICATE:

I, C. FRED DEUEL, the undersigned registered land surveyor, authorized to practice in the State of Florida, do hereby certify that the construction of the improvements described in this condominium plat of PHASE III, LAKE SIDE OFFICE PARK I, A CONDOMINIUM, consisting of one sheet, is substantially complete so that the material, together with the provisions of the declarations relating to matters of survey describing the condominium property, is an accurate representation of the location and dimensions of the improvements and that the identification, location and dimensions of the common elements and of each unit can be determined from said materials. I also certify that the materials and composition of this plat conform to the requirements of Chapter 177.091 of the Florida Statutes.

DATE: June 3, 1983

FLORIDA SURVEYOR'S REG. NO. 327

LEGAL DESCRIPTION: PHASE III.

From the Northwest corner of the NE 1/4 of Section 34, Township 24 S., Range 16 E., Pasco County, Florida, S. 00°15'53" W., 86.64 feet along the West boundary of said section quarter; thence S. 37°44'07" E., 43.45 feet; thence S. 12°24'11" W., 40.19 feet; thence S. 00°15'53" W., 5.02 feet to the POINT OF BEGINNING; thence S. 36°12'13" E., 274.30 feet; thence S. 53°47'47" W., 63.33 feet; thence N. 36°12'13" W., 41.33 feet; thence S. 53°47'47" W., 108.86 feet; thence N. 00°15'53" E., 299.69 feet to the POINT OF BEGINNING. Containing 0.520 acres, more or less.

FILED AND RECORDED:

In the Public Records of Pasco County, Florida, on this 8th Day of June, 1983.

Jed Pittman, Jr. County Clerk
Jared Cranwell, Deputy Clerk

C. Fred Deuel and Associates, Inc.

SHEET 1 OF 1