

# GROVE PARK UNIT NO. 5

BEING A SUBDIVISION OF TRACT 61-TAMPA-TARPON SPRINGS LAND COMPANY SUBDIVISION IN SECTION 17, TOWNSHIP 26S-RANGE 16E AS RECORDED IN PLATEBOOK 1,  
PAGES 69 AND 70 PASCO COUNTY RECORDS

STATE OF FLORIDA } 25

COUNTY OF PASCO } 25

STATE OF FLORIDA } ss.  
COUNTY OF PASCO }  
THE UNDERSIGNED OWNERS OF LANDS SHOWN ON THIS PLAT AND DESCRIBED  
AS BEING IN PASCO COUNTY, FLORIDA AS FOLLOWS:

FROM THE NORTHWEST CORNER OF THE SOUTHWEST ONE QUARTER OF THE SOUTHWEST ONE QUARTER OF SECTION 17 TOWNSHIP 26 SOUTH RANGE 16 EAST, RUN 68°39'10"E 1327.58 FEET; THENCE 60°20'51"W 330.51 FEET; THENCE N88°39'09"W 1327.62 FEET; THENCE N01°28'E 330.49 FEET TO THE POINT OF BEGINNING.

HAVING CAUSED SAID LANDS TO BE DIVIDED AND SUBDIVIDED AS SHOWN HEREON AND DO HEREBY CERTIFY TO THE PERPETUAL USE OF THE PUBLIC ALL ROADS, STREETS, ALLEYS AND OTHER RIGHTS OF WAY AND ALL PARKS AND RECREATION AREAS AND ALL EASEMENTS FOR UTILITIES, DRAINAGE AND PURPOSES INCIDENT THERE TO AS SHOWN AND DEPICTED HEREON RESERVE HOWEVER THE REVERSION OR REVERSIONS THEREOF SHOULD BE RECONQUICED, DISCLAIMED, ABANDONED OR THE USE THEREOF DISCONTINUED AS PRESCRIBED BY LAW BY APPROPRIATE OFFICIAL ACTION OF PROPER OFFICIALS HAVING CHARGE OR JURISDICTION THEREOF.

Greene Park Homes, Inc.  
John E. Greene - OWNER  
PRES.

SIGNED, SEALED AND DELIVERED IN THE PRESENCE OF

Grand Jurors: 1 WITNESS

Arthur K. Herbert WITNESS

STATE OF FLORIDA }  
COUNTY OF PASCO }

3. **प्रश्न 3:** निम्नलिखित में से एक को चुनिए और इसका विवरण दीजिए।

[illegible]

Ruby R. Hader  
NOTARY PUBLIC, STATE OF FLORIDA, AT LARGE

MY COMMISSION EXPIRES June 6, 1965.

### SURVEYORS CERTIFICATE

SURVEYORS CERTIFICATE  
I HEREBY CERTIFY ON THIS 28 DAY OF Apr A.D. 1965 THIS PROPERTY WAS SURVEYED AND MONUMENTS (P.M.) WERE SET AS INDICATED AND ANGLES, LENGTHS AND DIMENSIONS ARE CORRECT.

ARTHUR B. CASTLE

Arthur B. Castle  
FLA SURVEYOR REG. NO. 1071

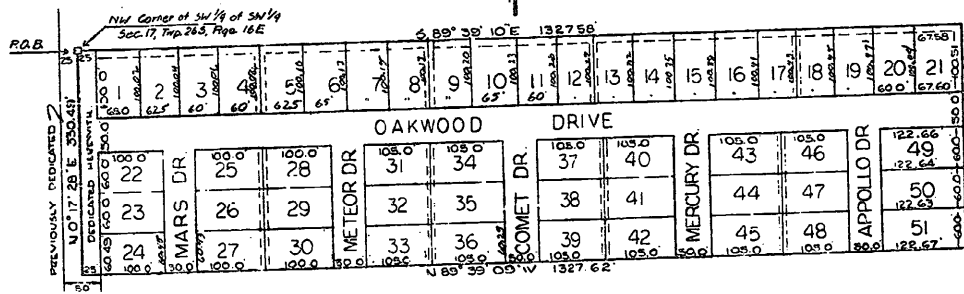
APPROVED: BY THE BOARD OF COUNTY COMMISSIONERS OF PASCO COUNTY,  
FLORIDA ON THIS 25 DAY OF MAY A.D. 1965.



1965.  
G. A. E. S. : CHAIRMAN

FILED AND RECORDED IN THE PUBLIC RECORDS OF PASCO COUNTY,  
FLORIDA, ON THIS 26 DAY OF May, A.D. 1965, IN PLAT BOOK 8, PAGE 61,  
Heather L. Burnside, CLERK OF CIRCUIT COURT

Stacy E. Burnside CLERK OF CIRCUIT COURT  
By: Melvin M. Jordan, Jr.

Denotes Utility Easements  
6' wide.



NOTE: ALL EASEMENTS ARE SHOWN THUS  OR THUS  AND ARE FOR DRAINAGE ONLY UTILITIES, AND ARE GFT IN WIDTH EACH SIDE OF LOT LINE UNLESS OTHERWISE SHOWN