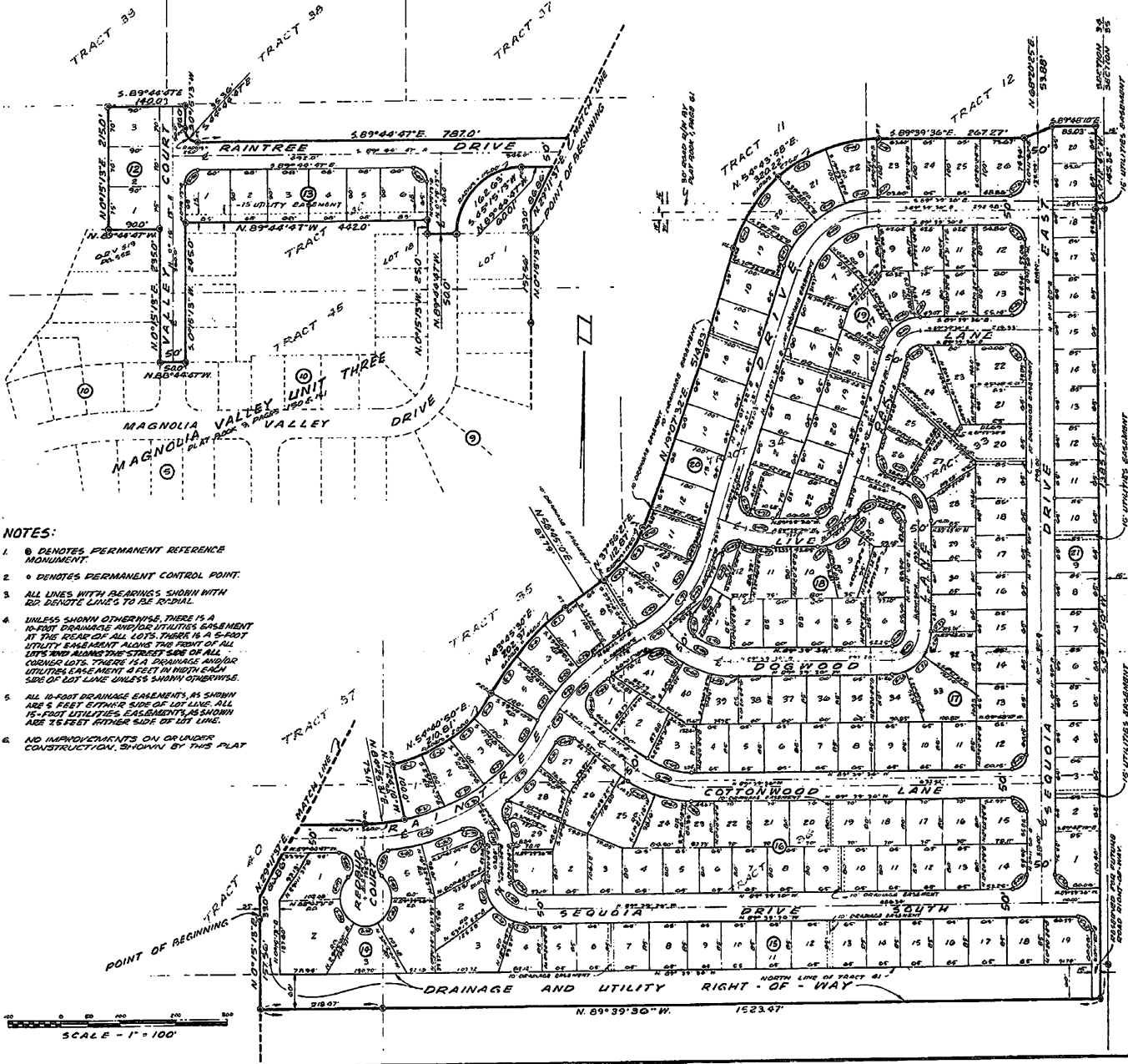


# MAGNOLIA VALLEY UNIT FIVE

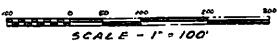
Book 11 Page 137

SHEET 2 OF 3 SHEETS



**NOTES:**

1. (C) DENOTES PERMANENT REFERENCE MONUMENT.
2. (O) DENOTES PERMANENT CONTROL POINT.
3. ALL LINES WITH BEARINGS SHOWN WITH (C) DENOTE LINES TO BE CORRAL.
4. UNLESS SHOWN OTHERWISE, THERE IS A 10-FOOT DRAINAGE AND/OR UTILITIES EASEMENT AT THE REAR OF ALL LOTS. THERE IS A 5-FOOT UTILITY EASEMENT ALONG THE FRONT OF ALL LOTS AND ALONG THE STREET SIDE OF ALL CORNER LOTS. THERE IS A DRAINAGE AND/OR UTILITIES EASEMENT 4 FEET IN WIDTH EACH SIDE OF LOT LINE UNLESS SHOWN OTHERWISE.
5. ALL 10-FOOT DRAINAGE EASEMENTS, AS SHOWN ARE 5 FEET EITHER SIDE OF LOT LINE. ALL 15-FOOT UTILITIES EASEMENTS, AS SHOWN ARE 7.5 FEET EITHER SIDE OF LOT LINE.
6. NO IMPROVEMENTS ON GROUND CONSTRUCTION, SHOWN BY THIS PLAT



N. 89° 39' 30" W. 1523.07'