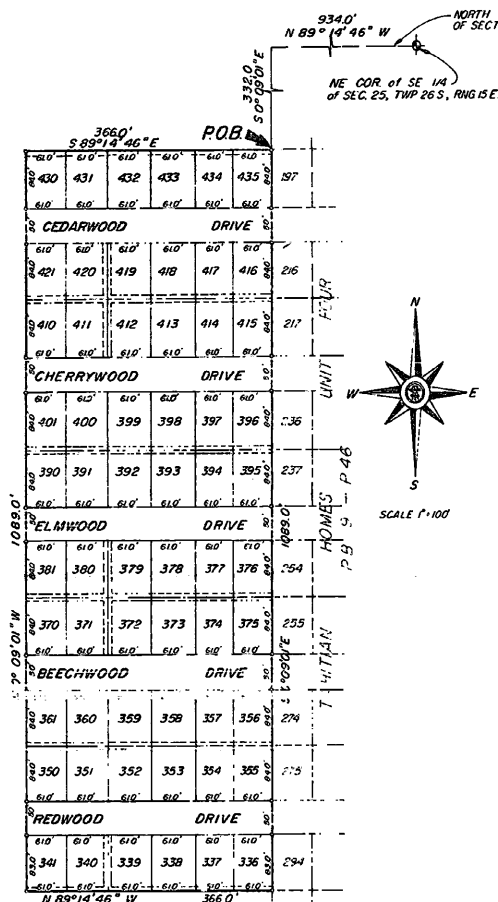


TAHITIAN HOMES UNIT FIVE

A SUBDIVISION OF PORTIONS OF TRACTS 35, 36, AND 41 OF THE TAMPA-TARPON SPRINGS LAND COMPANY'S SUBDIVISION OF SECTION 25, TOWNSHIP 26 S., RANGE 15 E., AS SHOWN ON PLAT RECORDED IN PLAT BOOK 1, PAGES 68, 69, AND 70 OF THE PUBLIC RECORDS OF PASCO COUNTY, FLORIDA.



STATE OF FLORIDA }
COUNTY OF PASCO } SS

THE UNDERSIGNED OWNERS OF THE LANDS SHOWN ON THIS PLAT AND DESCRIBED AS BEING IN PASCO COUNTY, FLORIDA, AS FOLLOWS:

FOR A POINT OF REFERENCE COMMENCE AT THE NORTHEAST CORNER OF THE SOUTHEAST 1/4 OF SECTION 25, TOWNSHIP 26 SOUTH, RANGE 15 EAST, PASCO COUNTY, FLORIDA; THENCE N 89°14'46" W, ALONG THE NORTH LINE OF THE SOUTHEAST 1/4 OF SAID SECTION 25, 9340 FEET; THENCE S 0°09'01" E 3320 FEET FOR A POINT OF BEGINNING, SAID POINT OF BEGINNING BEING ALSO THE NORTHWEST CORNER OF LOT 187 OF TAHITIAN HOMES UNIT FOUR AS RECORDED IN PLAT BOOK 9, PAGE 46 OF THE PUBLIC RECORDS OF PASCO COUNTY, FLORIDA; FROM SAID POINT OF BEGINNING CONTINUE S 0°09'01" E ALONG THE WESTERLY BOUNDARY OF SAID TAHITIAN HOMES UNIT FOUR A DISTANCE OF 10890 FEET, TO THE SOUTHWEST CORNER OF LOT 294 SAID UNIT FOUR, THENCE N 89°14'46" W, 3660 FEET; THENCE N 0°09'01" W, 10890 FEET; THENCE S 89°14'46" E, 3660 FEET TO THE POINT OF BEGINNING, CONTAINING 915 ACRES MORE OR LESS.

HAVE CAUSED SAID LAND TO BE DIVIDED AND SUBDIVIDED AS SHOWN HEREON AND DO HEREBY DEDICATE TO THE PERPETUAL USE OF THE PUBLIC ALL ROADS, STREETS, ALLEYS, AND RIGHTS OF WAY, AND ALL PARKS AND RECREATION AREAS AND ALL EASEMENTS FOR UTILITIES, DRAINAGE AND OTHER PURPOSES AND FOR ALL PURPOSES INCIDENT THERETO AS SHOWN AND DEPICTED HEREON, RESERVING, HOWEVER, THE REVERSION OR REVERSIONS THEREOF SHOULD THE SAME BE RENOUNCED, DISCLAIMED, ABANDONED OR THE USE THEREOF DISCONTINUED AS PRESCRIBED BY LAW BY APPROPRIATE OFFICIAL ACTION OF THE PROPER OFFICIALS HAVING CHARGE OR JURISDICTION THEREOF; ALSO RESERVING THE RIGHT OF INGRESS AND EGRESS OVER ALL RIGHTS OF WAY AND EASEMENTS DEDICATED BY THIS PLAT, ALSO RESERVING THE RIGHT TO CONSTRUCT AND MAINTAIN WATER AND SEWER LINES WITHIN ALL RIGHTS OF WAY AND EASEMENTS DEDICATED BY THIS PLAT; IN THE EVENT OF REPAIR OR MAINTENANCE CAUSING DAMAGE TO EXISTING STREETS, OWNERS AGREE TO REPLACE STREETS TO PRIOR CONDITION WITHIN SAID DAMAGED AREAS. THIS THE 11th DAY OF JULY, A.D. 1969

TAHITIAN HOMES, INC.

Estlon C. Pippin PRESIDENT M. J. Wood SECRETARY - TREASURER
SIGNED, SEALED AND DELIVERED IN THE PRESENCE OF
Charles W. Bunch WITNESS Frank K. Warner WITNESS

STATE OF FLORIDA }
COUNTY OF PASCO } SS

I HEREBY CERTIFY ON 11th DAY OF JULY AD 1969, BEFORE PERSONALLY APPEARED ESTLON C. PIPPIN AND M. J. WOOD, RESPECTIVELY PRESIDENT AND SECRETARY-TREASURER OF TAHITIAN HOMES, INC. A FLORIDA CORPORATION, TO ME KNOWN TO BE THE PERSONS DESCRIBED IN AND WHO EXECUTED THE FOREGOING CERTIFICATE AND DEDICATION AND SEVERALLY ACKNOWLEDGED THE EXECUTION THEREOF TO BE THEIR FREE ACT AND DEED FOR THE USES AND PURPOSES THEREIN EXPRESSED, WITNESS MY HAND AND OFFICIAL SEAL OF NEW PORT RICHEY, FLORIDA THE DAY AND YEAR AFORE SAID.

MY COMMISSION EXPIRES March 12, 1973, NOTARY PUBLIC, STATE OF FLORIDA, AT LARGE

APPROVED BY THE BOARD OF COUNTY COMMISSIONERS OF PASCO COUNTY, ON THIS 22nd DAY OF JULY AD 1969
G. C. Stoney CHAIRMAN

FILED AND RECORDED IN THE PUBLIC RECORDS OF PASCO COUNTY, FLORIDA ON THIS 22nd DAY OF JULY AD 1969 IN PLAT BOOK 9, PAGE 125.
Charles W. Bunch CLERK OF CIRCUIT COURT

SURVEYOR'S CERTIFICATE I HEREBY CERTIFY ON THIS 11th DAY OF JULY AD 1969, THAT THIS PLAT WAS SURVEYED AND THAT MONUMENTS (P.R.M.'S) WERE SET AS INDICATED, AND ALL ANGLES, LENGTHS, AND DIMENSIONS ARE CORRECT

AMERICAN ENGINEERING INC.

Richard C. Pippin PRESIDENT, FLORIDA SURVEYORS' REG. NO. 1844

Paul T. Tompkins SEC. TREAS. FLORIDA ENGINEERS' REG. NO. 8224

NOTE:

- (1) INDICATES PERMANENT REFERENCE MONUMENT (P.R.M.)
(2) ALL EASEMENTS ARE SHOWN THIS PLAT AND THUS ARE SHOWN OTHERWISE AND ARE DRAINAGE DRAINAGE UTILITIES, REAR LOT EASEMENTS ARE 6 FEET IN WIDTH, UNLESS SHOWN OTHERWISE. SIDE LOT EASEMENTS ARE 3 FEET IN WIDTH EACH SIDE OF LOT LINE UNLESS OTHERWISE SHOWN.