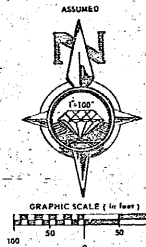


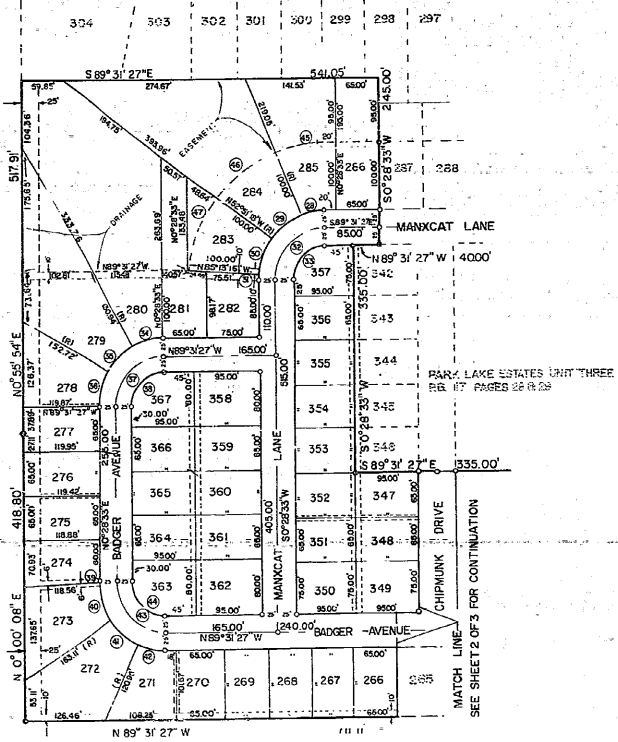
PARK LAKE ESTATES UNIT FOUR

BEING A PORTION OF THE SOUTHWEST 1/4 OF SECTION 14,
TOWNSHIP 26 SOUTH, RANGE 16 EAST, PASCO COUNTY, FLORIDA.

17/125



PARK LAKE ESTATE UNIT THREE
P.B. 17, PGS. 28 & 29.



CURVE		DATA			
NO.	RADIUS	DELTA	ARC	CHORD	BEARING
1	1200.00	21° 25' 10"	45.00	44.74	S 35° 35' 06" W
2	316.74	4° 07' 20"	17.26	17.26	S 85° 40' 07" E
3	330.00	8° 24' 40"	35.70	35.73	S 65° 18' 47" E
4	316.74	13° 12' 50"	73.05	72.89	S 70° 50' 12" E
5	316.74	12° 33' 15"	69.40	69.26	S 83° 43' 15" E
6	346.74	25° 23' 56"	153.71	152.45	N 77° 17' 54" W
7	376.74	14° 33' 19"	95.71	95.45	N 75° 11' 24" W
8	376.74	10° 31' 48"	69.24	69.14	N 65° 43' 58" W
9	170.00	4° 45' 13"	14.65	14.64	N 2° 27' 58" W
10	170.00	2° 15' 25"	6.00	5.99	N 15° 02' 47" W
11	230.00	18° 47' 00"	75.40	75.06	N 15° 48' 00" W
12	230.00	25° 40' 56"	103.10	102.23	N 6° 27' 58" E
13	200.00	25° 09' 38"	87.85	87.12	N 12° 34' 41" W
14	200.00	35° 23' 00"	193.32	188.89	N 2° 32' 00" E
15	230.00	1° 35' 50"	14.64	14.64	N 1° 49' 17" W
16	230.00	2° 30' 48"	16.36	16.35	N 14° 24' 06" W
17	170.00	2° 52' 00"	8.62	8.62	N 10° 13' 50" W
18	170.00	2° 52' 00"	8.62	8.62	N 15° 38' 30" E
19	230.00	15° 35' 32"	62.59	62.40	N 26° 46' 44" E
20	50.00	15° 01' 22"	13.11	13.07	N 82° 37' 52" E
21	50.00	4° 50' 12"	4.00	3.94	N 52° 32' 00" E
22	50.00	4° 05' 24"	3.50	3.43	N 7° 33' 47" E
23	50.00	4° 50' 12"	4.00	3.94	N 33° 24' 31" W
24	50.00	33° 11' 50"	2.89	2.87	N 72° 55' 35" W
25	200.00	27° 29' 41"	125.97	95.06	S 20° 49' 40" W
26	170.00	34° 05' 57"	101.17	99.69	S 17° 31' 31" W
27	230.00	1° 24' 15"	5.63	5.63	S 33° 52' 23" W
28	100.00	22° 23' 28"	39.08	38.85	S 72° 16' 49" W
29	100.00	30° 56' 23"	54.00	53.35	S 52° 36' 53" W
30	100.00	32° 21' 58"	56.49	55.74	N 20° 57' 43" E
31	100.00	4° 18' 11"	7.91	7.91	N 2° 37' 38" E
32	75.00	90° 00' 00"	117.81	106.07	N 45° 28' 33" E
33	50.00	90° 00' 00"	78.54	70.71	N 45° 28' 33" E
34	09.00	30° 00' 00"	52.36	51.76	S 75° 28' 33" W
35	100.00	30° 00' 00"	52.36	51.76	S 45° 28' 33" W
36	100.00	30° 00' 00"	52.36	51.76	S 15° 28' 33" W
37	75.00	90° 00' 00"	117.81	106.07	N 45° 28' 33" E
38	50.00	90° 00' 00"	78.54	70.71	N 45° 28' 33" E
39	100.00	2° 51' 54"	5.00	5.00	N 0° 57' 24" W
40	100.00	31° 30' 46"	55.00	54.31	N 15° 08' 44" W
41	100.00	31° 30' 46"	55.00	54.31	N 69° 38' 30" W
42	100.00	24° 36' 34"	42.08	41.77	N 77° 28' 10" W
43	75.00	90° 00' 00"	117.81	106.07	N 44° 31' 27" W
44	50.00	90° 00' 00"	78.54	70.71	N 44° 31' 27" W
45	200.00	12° 24' 28"	78.16	77.66	S 79° 16' 49" W
46	200.00	30° 56' 23"	108.00	106.89	S 52° 36' 53" W
47	200.00	32° 21' 58"	111.48	109.80	S 27° 43' 43" W
48	200.00	4° 21' 00"	15.18	15.18	N 32° 24' 00" E
49	200.00	6° 56' 16"	23.05	23.04	S 3° 46' 41" W

- NOTES**
- 1 - INDICATES PERMANENT REFERENCE MONUMENT (PRM)
 - 2 - INDICATES PERMANENT CONTROL POINT (PCP)
 - 3 - EASEMENTS SHOWN HAVE EXISTED ON THIS SITE ARE FOR DRAINAGE AND/OR UTILITIES UNLESS SHOWN OTHERWISE.
 - 4 - REAR LOT EASEMENTS ARE 6.0 FEET IN WIDTH EACH SIDE OF LOT LINE UNLESS SHOWN OTHERWISE.
 - 5 - SIDE LOT EASEMENTS ARE 3.0 FEET IN WIDTH EACH SIDE OF LOT LINE UNLESS SHOWN OTHERWISE.
 - 6 - THERE IS A 100' EASEMENT ALONG THE FRONT OF ALL LOTS ALONG THE STREET SIDE OF ALL CORNER LOTS.
 - 7 - 4 INCHES LINE IS RADIAL TO CURVE.