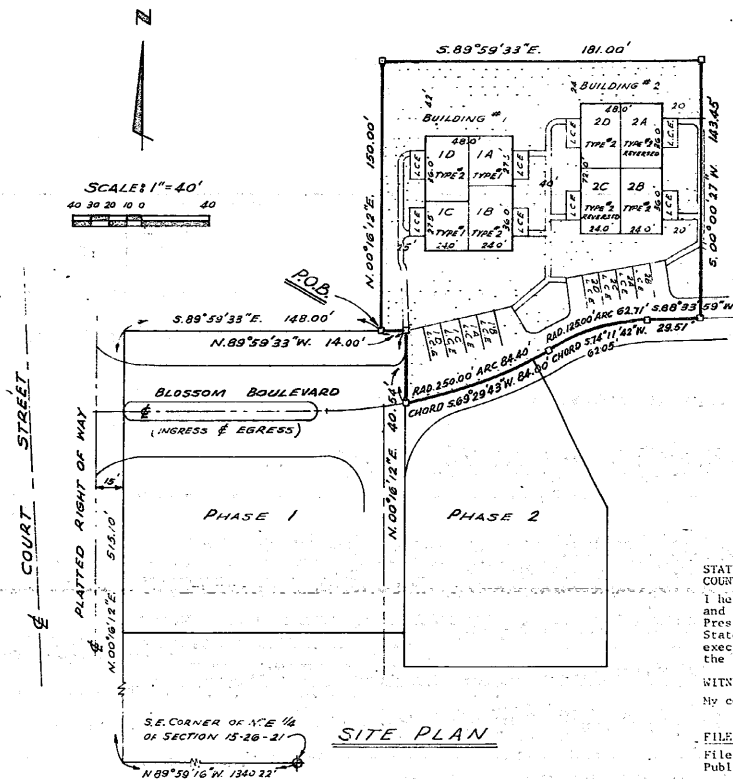


ORANGE BLOSSOM RANCH, A CONDOMINIUM

PHASE 3

LOCATED IN SECTION 15, TOWNSHIP 26 SOUTH, RANGE 21 EAST
PASCO COUNTY FLORIDA



SITE PLAN

NOTES

- Those portions of the common elements indicated in the dotted areas herein are subject to easements for the following: Florida Power Corporation, General Telephone Company, sanitary sewer, water, utilities, cable television, ingress, egress and access.
- Limited common elements for the purposes herein, are indicated as LCE and are for the exclusive use of the units which they are appurtenant.
- The following parking spaces are limited common elements. 1A, 1B, 1C, 1D, 2A, 2B, 2C and 2D.
- Mean sea level equals 0.00

C. Fred Bevel and Associates, Inc.
CONSULTING ENGINEERS LAND PLANNERS LAND SURVEYORS
ST. PETERSBURG • HUDSON • ZEPHYRHILLS • CLEARWATER

LEGAL DESCRIPTION

That part of Tract 50, ZEPHYRHILLS COLONY COMPANY LANDS as recorded in Plat Book 1, Page 35, Public Records of Pasco County, Florida, lying in the NE 1/4 of Section 15, Township 26 South, Range 21 East, Pasco County, Florida, being further described as follows: Commencing at the SE corner of the NE 1/4 of Section 15, Township 26 South, Range 21 East, Pasco County, Florida, run N. 89° 59' 33" E., 1340.22 feet along the East/West centerline of said Section 15; thence N. 80° 16' 12" E., 315.10 feet; thence S. 89° 59' 33" E., 148.00 feet for a POINT OF BEGINNING; thence N. 00° 16' 12" E., 150.0 feet; thence S. 89° 59' 33" E., 181.00 feet; thence S. 00° 00' 27" W., 143.45 feet; thence S. 88° 33' 59" W., 29.51 feet; thence run 62.71 feet along the arc of a curve to the left having a radius of 125.00 feet, chord S. 74° 11' 42" W., 62.05 feet; thence run 84.40 feet along the arc of a curve to the right having a radius of 250.00 feet, chord S. 69° 29' 43" W., 84.00 feet; thence N. 00° 16' 12" E., 40.54 feet; thence N. 89° 59' 33" W., 14.00 feet to the POINT OF BEGINNING.

DEDICATION

Know all men by these presents that we, C. CHARLES LOWE, JR. and WARREN C. LOWE, respectively, President and Secretary of LOWE/SCHMIDT CORPORATION, a corporation under the laws of the State of Florida, owner, have caused the land embraced in this plat to be surveyed, laid out, and platted as ORANGE BLOSSOM RANCH, A CONDOMINIUM, PHASE 3, and that all easements for Florida Power Corporation, General Telephone Company, sanitary sewer, water, utilities, cable television, and ingress, egress and access shall be located within that portion of the common elements indicated on the plat of ORANGE BLOSSOM RANCH, A CONDOMINIUM, PHASE 3 as the dotted area and shall be for the common use of ORANGE BLOSSOM RANCH, A CONDOMINIUM, PHASE 3, their heirs, successors and assigns or any grantees from said corporation.

Robert E. Bevel
WITNESS
Mary J. Currie
WITNESS

LOWE/SCHMIDT CORPORATION
C. Charles Lowe Jr.
C. CHARLES LOWE, JR., PRESIDENT
Warren C. Lowe
WARREN C. LOWE, SECRETARY

STATE OF FLORIDA) SS
COUNTY OF PASCO)

I hereby certify that on this 8th day of March, 1983, before me a Notary Public in and for said county, personally appeared C. CHARLES LOWE, JR. and WARREN C. LOWE, respectively, President and Secretary of LOWE/SCHMIDT CORPORATION, a corporation under the laws of the State of Florida, owner, to be known and known to me to be the persons described in and executed the foregoing certificate of dedication and acknowledged the execution thereof the free act and deed of said corporation.

WITNESS my hand and official seal at Pasco County, Florida, the day and year aforesaid.
My commission expires 7/29/85 *Robert E. Bevel*
Notary Public, State of Florida

FILED AND RECORDED

Filed for Record on this 9th day of March 1983, in Plat Book 21, Page 102-104.
Public Records of Pasco County, Florida.

NOTE

The building dimensions and elevations as shown hereon for Building #2 are prior to actual construction and are approximate dimensions and elevations subject to slight variations which may occur during construction. The building dimensions are compiled from plans prepared by WRIGHT/PORTER & LOWE, INC.

SURVEYOR'S CERTIFICATE

I, C. FRED BEVEL, hereby certify that on March 8th 1983 I completed a survey of ORANGE BLOSSOM RANCH, A CONDOMINIUM, PHASE 3, in accordance with the map and dedication contained herein. I certify that this material, together with the wording of the dedication, is an accurate representation of the proposed improvements described herein. I further certify that the materials and composition of this plat conforms to the requirements of Chapter 117.091 of the Florida Statutes.

C. Fred Bevel
C. FRED BEVEL
Florida Engineer's Reg'n No. 3896
Florida Surveyor's Reg'n No. 827