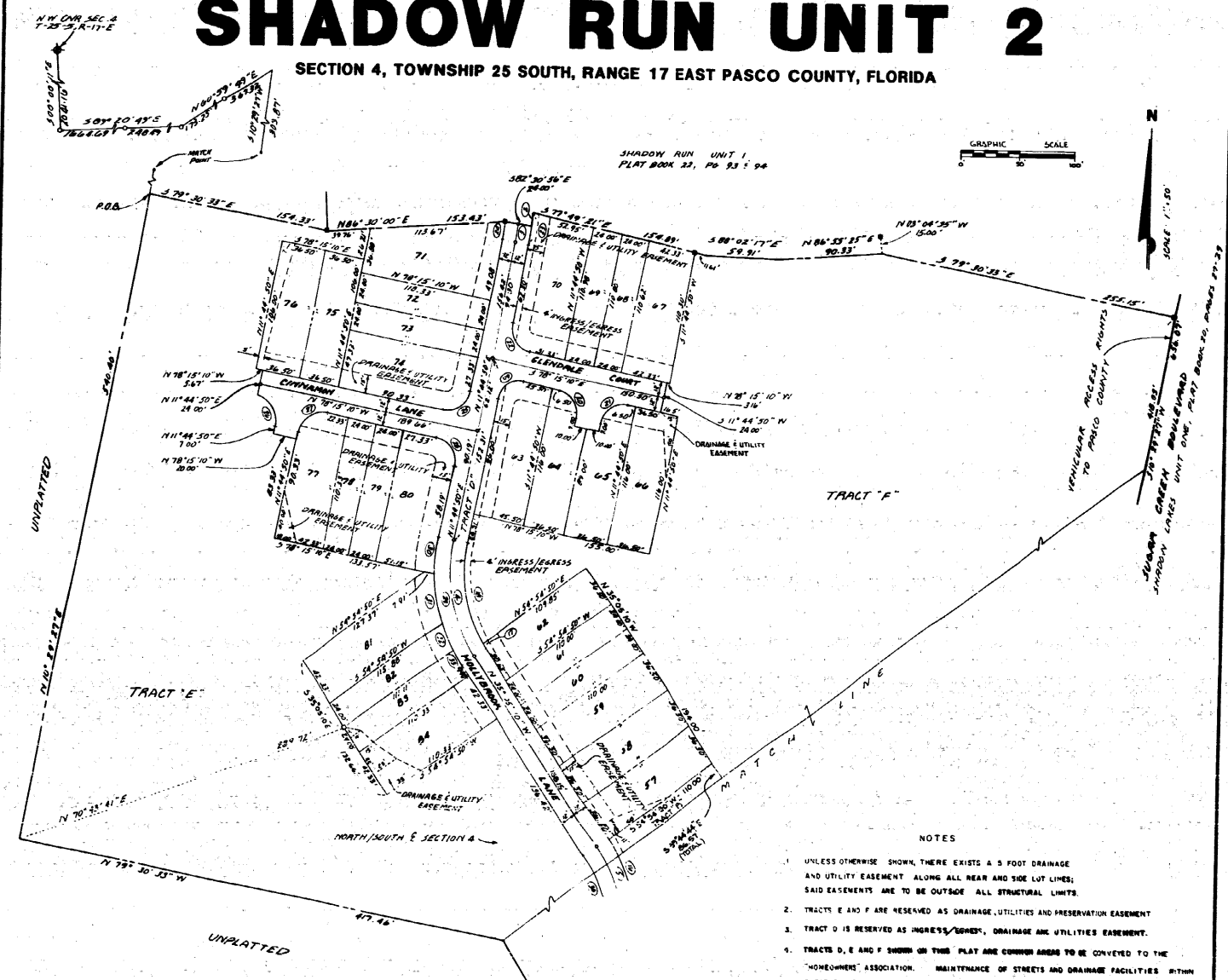


SHADOW RUN UNIT 2

SECTION 4, TOWNSHIP 25 SOUTH, RANGE 17 EAST PASCO COUNTY, FLORIDA



SHADOW RUN UNIT 1
PLAT BOOK 22, PG 93 & 94

GRAPHIC SCALE
0 50 100

N
SCALE 1" = 50'

UNPLATTED
PLAN RELATIVE

TRACT E

TRACT F

VEHICULAR ACCESS RIGHTS
TO PASCO COUNTY
SHADOW LAKES UNIT ONE, PLAT BOOK 20, PAGES 77-78

NOTES

1. UNLESS OTHERWISE SHOWN, THERE EXISTS A 5 FOOT DRAINAGE AND UTILITY EASEMENT ALONG ALL REAR AND SIDE LOT LINES; SAID EASEMENTS ARE TO BE OUTSIDE ALL STRUCTURAL LIMITS.
2. TRACTS E AND F ARE RESERVED AS DRAINAGE, UTILITIES AND PRESERVATION EASEMENT.
3. TRACT D IS RESERVED AS INGRESS/EGRESS, DRAINAGE AND UTILITIES EASEMENT.
4. TRACTS D, E AND F SHOWN ON THIS PLAT ARE COMMON AREAS TO BE CONVEYED TO THE "HOMEOWNERS" ASSOCIATION. MAINTENANCE OF STREETS AND DRAINAGE FACILITIES WITHIN THESE TRACTS AND WITHIN ALL EASEMENT AREAS, WILL BE THE RESPONSIBILITY OF THE "HOMEOWNERS" ASSOCIATION.
5. HEARING REFERENCE: HEARINGS BASED ON SHADOW LAKES UNIT ONE, PLAT BOOK 20, PAGES 27-29.
6. TRACT H IS A RECREATION AREA CONVEYED TO THE HOMEOWNERS ASSOCIATION.

LEGEND

- PERMANENT REFERENCE MONUMENT - 3/4" DIA. IRON
- PERMANENT REFERENCE MONUMENT - 1/4" DIA. IRON
- ① CURVE NUMBER
- PERMANENT CONTROL POINT - B.M.C. (L&P)

KING ENGINEERING ASSOCIATES, INC.
Consulting Engineers Surveyors
Suite 103 1230 U.S. 9 North, Clearwater, Florida 33516 (813) 785-2100