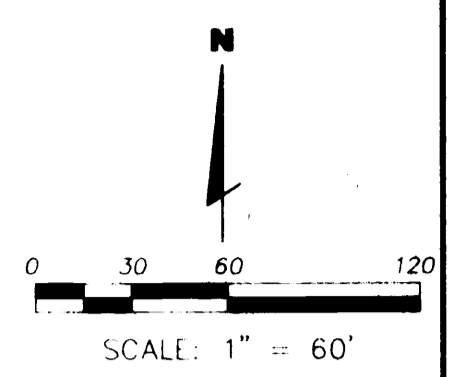


# HERITAGE PINES VILLAGE 8

BEING A SUBDIVISION OF LAND LYING WITHIN SECTION 5, TOWNSHIP 24 SOUTH, RANGE 17 EAST, PASCO COUNTY, FLORIDA

GPS D10-031  
N14911.38, 85.30  
E 450470.3310



GPS D10-032  
N1488587.5781  
E 449368.2924

**SURVEYOR'S NOTES**

- INDICATES SET PERMANENT REFERENCE MONUMENT (PRM) LB #261
- INDICATES EXISTING PERMANENT REFERENCE MONUMENT (PRM) LB #261 UNLESS OTHERWISE NOTED.
- INDICATES SET PERMANENT CONTROL POINT (PCP) LB #261
- INDICATES EXISTING PERMANENT CONTROL POINT (PCP) LB #261 UNLESS OTHERWISE NOTED.
- INDICATES LOT CORNER
- NTS INDICATES NOT TO SCALE.
- O/A INDICATES OVERALL.
- (R) INDICATES RADIAL LINES.
- (NR) INDICATES NON-RADIAL LINES.
- INDICATES EASEMENTS, SIZE AND TYPE AS NOTED.

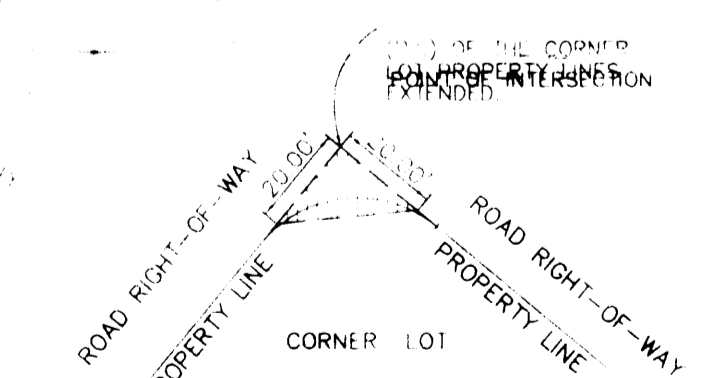
BEARINGS SHOWN HEREON ARE BASED UPON A BEARING BETWEEN PASCO COUNTY C.P.S. CONTROL STATIONS "D10-031" AND "D10-032" SAID LINE BEARS S25°21'44"W.

THE COORDINATE VALUES SHOWN HEREON ARE BASED UPON THE PASCO COUNTY PRIMARY HORIZONTAL CONTROL NETWORK (83 DATUM) AND WERE ESTABLISHED TO THIRD-ORDER CLASS 1 ACCURACY AS DEFINED BY THE STANDARDS AND SPECIFICATIONS FOR GEODETIC CONTROL NETWORKS, AS PUBLISHED BY THE FEDERAL GEODETIC CONTROL COMMITTEE DATED SEPTEMBER 1984 OR THE LATEST EDITION.

COMMENCEMENT POINT  
WEST 1/4 CORNER OF  
SECTION 5, 24, 27  
FCM 4"x4" PRM LB #261

CURV	RADIUS	LENGTH	CHORD	BEARING	DELTA	CURV	RADIUS	LENGTH	CHORD	BEARING	DELTA
C1	475.00'	328.62'	322.10'	N82°38'20"E	39°38'19"	C34	70.00'	29.62'	29.40'	S16°33'00"W	24°14'55"
C2	1225.00'	387.94'	386.32'	S86°36'51"E	18°08'40"	C35	25.00'	30.77'	28.87'	S63°56'08"W	70°31'44"
C3	130.00'	13.36'	13.36'	S25°43'36"W	05°53'20"	C36	50.00'	66.82'	61.97'	S60°55'03"W	76°53'53"
C4	60.00'	183.23'	119.88'	N63°50'33"W	174°58'22"	C37	50.00'	151.81'	99.86'	S64°20'49"E	173°57'50"
C5	168.40'	381.87'	305.15'	N10°33'02"E	129°55'36"	C38	120.00'	9.31'	9.31'	N26°26'51"E	04°26'51"
C6	1341.20'	43.57'	43.57'	N78°28'21"W	01°51'41"	C39	120.00'	65.64'	64.43'	N08°33'11"E	51°20'30"
C7	358.80'	248.23'	243.31'	S82°38'20"W	39°38'19"	C40	186.00'	23.26'	23.26'	N03°31'58"W	07°10'12"
C8	475.00'	95.03'	94.87'	N68°33'04"E	11°27'47"	C41	186.00'	25.40'	25.28'	N03°56'56"E	074°7'36"
C9	475.00'	95.03'	94.87'	N80°00'51"E	11°27'47"	C42	214.00'	43.10'	43.03'	N02°04'52"E	11°52'23"
C10	475.00'	95.03'	94.87'	S88°31'23"E	11°27'47"	C43	20.00'	32.26'	28.88'	N42°31'17"E	92°25'54"
C11	475.00'	43.52'	43.51'	S80°10'00"E	05°14'59"	C44	1225.00'	94.58'	94.55'	N86°31'32"E	04°55'25"
C12	1225.00'	39.80'	39.80'	S78°28'21"E	01°51'41"	C45	1225.00'	56.11'	56.10'	S87°16'17"E	02°47'27"
C13	1225.00'	73.78'	73.77'	S81°07'43"E	03°27'03"	C46	1225.00'	57.28'	57.28'	S89°55'23"E	02°40'46"
C14	1225.00'	66.37'	66.36'	S84°24'22"E	03°06'15"	C47	300.00'	44.93'	44.88'	S02°49'40"E	08°54'48"
C15	20.00'	29.47'	26.87'	S43°45'07"E	84°25'10"	C48	95.00'	59.34'	58.38'	S10°46'36"W	55°47'21"
C16	337.50'	10.44'	10.44'	S02°25'42"E	01°46'19"	C49	88.50'	68.20'	66.52'	S50°44'47"W	44°09'01"
C17	214.00'	67.26'	66.98'	S12°19'04"E	18°00'26"	C50	86.60'	67.50'	65.80'	N75°31'24"E	44°58'52"
C18	186.00'	24.34'	24.33'	S17°34'20"E	07°29'55"	C51	1483.20'	30.48'	30.44'	S85°50'21"E	05°02'26"
C19	186.00'	21.77'	21.75'	S10°28'13"E	06°42'18"	C52	200.00'	30.57'	30.54'	N87°15'41"E	08°45'51"
C20	20.00'	34.63'	30.46'	S42°29'11"W	99°17'31"	C53	168.40'	131.71'	128.38'	N32°00'23"E	44°48'44"
C21	1458.20'	86.60'	86.58'	N86°12'29"W	03°24'09"	C54	168.40'	169.52'	162.95'	S10°14'51"E	57°41'44"
C22	1458.20'	80.53'	80.52'	N82°55'29"W	03°09'51"	C55	168.40'	80.58'	79.82'	N61°48'16"E	27°25'08"
C23	1458.20'	9.05'	9.05'	N81°09'33"W	00°21'21"	C56	358.80'	32.87'	32.86'	N80°10'00"W	04°14'59"
C24	1458.20'	176.18'	176.07'	S84°26'53"E	06°55'21"	C57	358.80'	71.78'	71.66'	N88°31'23"E	11°27'47"
C25	50.00'	50.35'	48.25'	S19°14'51"W	57°41'44"	C58	358.80'	71.78'	71.66'	S80°00'51"W	11°27'47"
C26	50.00'	50.35'	48.25'	S38°26'53"E	57°41'44"	C59	358.80'	71.78'	71.66'	S68°53'04"W	11°27'47"
C27	50.00'	74.66'	67.92'	N69°55'31"E	85°33'28"	C60	1341.20'	45.40'	45.40'	S80°22'23"E	01°56'27"
C28	50.00'	219.80'	80.97'	S26°55'13"E	251°51'59"	C61	1341.20'	74.07'	74.06'	S82°55'29"E	03°09'51"
C29	25.00'	15.31'	15.07'	N78°48'21"E	35°05'08"	C62	1341.20'	82.90'	82.88'	S86°16'39"E	03°52'29"
C30	1508.20'	59.91'	59.90'	S84°47'22"E	02°16'33"	C63	1341.20'	121.58'	121.54'	N85°27'04"W	05°11'58"
C31	1508.20'	66.56'	66.56'	S87°11'30"E	02°31'43"	C64	1341.20'	80.78'	80.77'	N81°07'43"W	03°27'03"
C32	20.00'	28.39'	26.07'	S47°47'13"E	81°20'17"	C65	25.00'	34.89'	34.67'	N44°21'7"E	54°06'59"
C33	70.00'	14.11'	14.08'	S01°20'40"E	11°32'48"	C66	50.00'	44.23'	43.99'	S73°33'53"W	50°55'03"
C67	1235.00'	41.91'	41.91'	S83°49'34"E	01°56'40"	C68	1240.00'	23.94'	23.94'	S85°21'17"E	01°06'23"
C70	1235.00'	69.90'	69.89'	S85°57'21"W	03°14'34"	C69	352.50'	13.84'	13.84'	S02°25'40"E	02°14'56"
C71	1240.00'	24.25'	24.25'	S88°08'29"W	01°07'13"	C72	250.00'	13.42'	13.42'	S01°47'43"E	03°27'27"

LINE	DIRECTION	DISTANCE
11	N83°57'20"W	10.48'
12	N61°19'44"W	10.05'
13	N71°30'50"E	32.80'
14	S81°52'56"W	10.24'
15	S04°25'11"W	3.00'
16	S42°48'50"E	3.49'
17	N86°55'02"E	3.02'
18	S01°29'40"E	3.00'
19	S41°48'52"W	3.26'
20	S88°20'06"W	3.00'



**king ASSOCIATES, INC.**  
PHONE 813 • 880 • 888  
FAX 813 • 880 • 888  
E-MAIL king@kingeng.com

CERTIFICATE OF AUTHORIZATION No. LB 2610

- NOTE: 1. This plat, as recorded in its graphic form, is the official depiction of the subdivision and described herein and will in no circumstances be supplanted in authority by any other graphic or digital form of the plat, whether graphic or digital. There may be additional restrictions that are not recorded on this plat that may be found in the public records of this county.
2. On all corner lots, nothing shall be erected, placed or planted within the Clear Sight Triangle Detail.