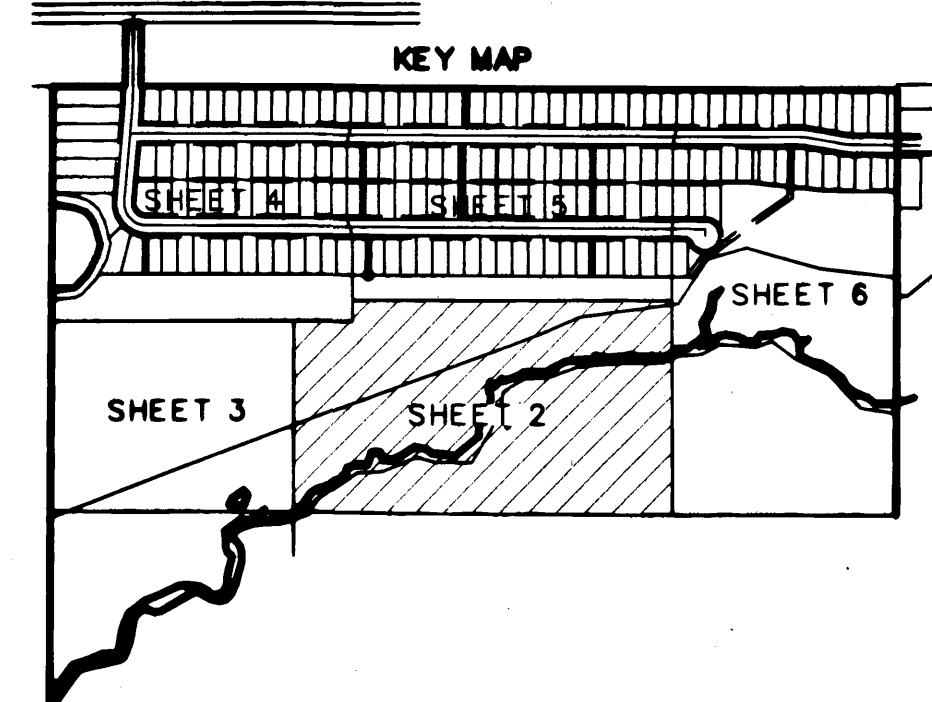
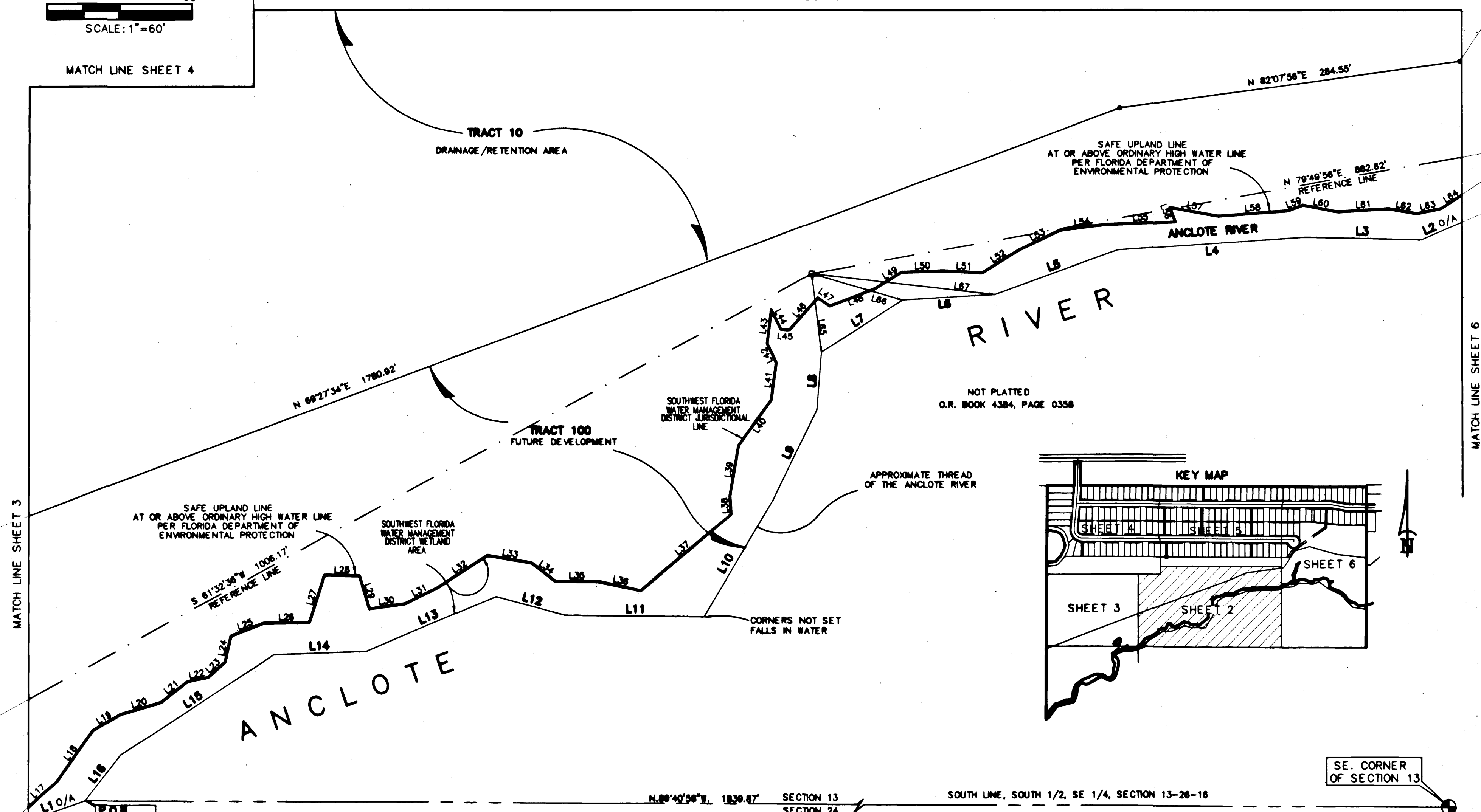
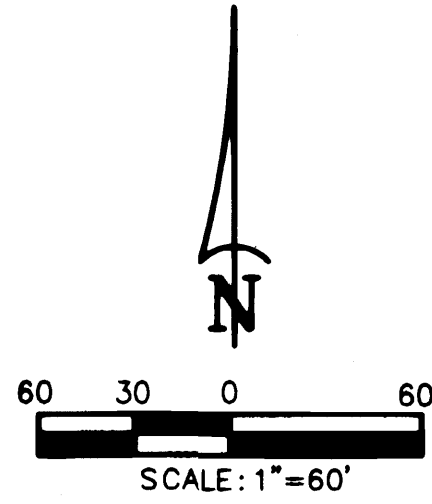


46/35

RIVERCHASE UNIT TWO

A SUBDIVISION OF A PORTION OF SECTION 13 AND 24, TOWNSHIP 26 SOUTH, RANGE 16 EAST
PASCO COUNTY, FLORIDA



P.O.B. PARCEL "A" NOT PLATTED O.R. BOOK 1989, PAGE 0734

LINE TABLE			LINE TABLE		
LINE	BEARING	DISTANCE	LINE	BEARING	DISTANCE
L1	S 71°05'12"W	91.08'	L34	S 52°29'23"E	24.58'
L2	S 68°38'03"W	57.82'	L35	S 89°34'49"E	35.94'
L3	N 88°41'53"W	97.84'	L36	S 77°49'53"E	35.68'
L4	S 86°01'05"W	154.20'	L37	N 50°10'31"E	87.53'
L5	S 70°26'03"W	108.20'	L38	N 03°36'43"W	15.24'
L6	S 86°40'06"W	78.29'	L39	N 09°52'22"E	42.70'
L7	S 57°03'33"W	80.18'	L40	N 35°19'48"E	46.73'
L8	S 04°37'04"W	48.39'	L41	N 07°45'07"E	31.57'
L9	S 25°53'41"W	82.97'	L42	N 25°38'04"W	17.36'
L10	S 30°47'11"W	112.69'	L43	N 07°02'19"E	28.42'
L11	N 89°15'40"W	114.62'	L44	S 25°55'36"E	18.17'
L12	N 74°53'10"W	59.32'	L45	S 87°21'33"E	7.19'
L13	S 87°20'15"W	118.99'	L46	N 41°12'48"E	35.84'
L14	S 88°09'34"W	76.48'	L47	S 54°03'39"E	11.95'
L15	S 58°42'48"W	152.15'	L48	N 69°04'34"E	38.75'
L16	S 37°39'40"W	47.71'	L49	N 58°57'56"E	26.20'
L17	N 48°37'05"E	56.95'	L50	N 88°08'56"E	34.91'
L18	N 34°51'59"E	52.23'	L51	S 87°06'16"E	31.94'
L19	N 59°27'45"E	26.81'	L52	N 58°15'25"E	36.44'
L20	N 73°42'49"E	34.99'	L53	N 64°28'33"E	37.03'
L21	N 51°48'35"E	27.85'	L54	N 83°07'57"E	38.03'
L22	N 78°35'13"E	17.46'	L55	N 87°43'47"E	58.06'
L23	N 47°42'04"E	19.02'	L56	N 22°01'51"W	12.89'
L24	N 12°55'25"E	21.48'	L57	S 79°54'01"E	40.67'
L25	N 68°48'25"E	28.95'	L58	N 85°32'27"E	58.33'
L26	N 89°20'38"E	38.01'	L59	N 69°41'37"E	12.89'
L27	N 17°48'28"E	40.89'	L60	S 78°52'38"E	28.07'
L28	S 88°40'36"E	29.10'	L61	N 86°32'53"E	42.72'
L29	N 16°37'01"W	28.38'	L62	S 80°04'08"E	23.40'
L30	N 81°57'47"E	29.87'	L63	N 78°31'17"E	20.59'
L31	N 63°43'02"E	30.02'	L64	N 56°47'22"E	39.73'
L32	N 57°12'56"E	49.28'	L65	S 06°49'46"E	85.54'
L33	S 80°28'20"E	37.01'	L66	S 74°02'14"E	78.10'
			L67	S 83°34'14"E	152.21'

N. 89°40'56"W 1839.87' SECTION 13
SECTION 24
SOUTH LINE, SOUTH 1/2, SE 1/4, SECTION 13-26-16

SE. CORNER OF SECTION 13

FOUND 4" CONCRETE MONUMENT "MOOREHEAD ENGINEERING"

- NOTES:**
- BEARINGS SHOWN HEREON ARE BASED ON THE EAST BOUNDARY LINE OF SECTION 13, TOWNSHIP 26 SOUTH, RANGE 16 EAST, PASCO COUNTY, FLORIDA ASSUMED AS BEING S.00°19'59"W.
 - NOTICE: THIS PLAT, AS RECORDED IN ITS GRAPHIC FORM, IS THE OFFICIAL DEPICTION OF THE SUBDIVIDED LANDS DESCRIBED HEREIN AND WILL IN NO CIRCUMSTANCES BE SUPPLANTED IN AUTHORITY BY ANY OTHER GRAPHIC OR DIGITAL FORM OF THE PLAT. THERE MAY BE ADDITIONAL RESTRICTIONS THAT ARE NOT RECORDED ON THIS PLAT THAT MAY BE FOUND IN THE PUBLIC RECORDS OF THIS COUNTY.
 - THE COORDINATE VALUES SHOWN HEREON ARE BASED ON THE PASCO COUNTY PRIMARY HORIZONTAL CONTROL NETWORK AND WERE ESTABLISHED TO THIRD-ORDER CLASS I ACCURACY AS DEFINED BY THE STANDARDS AND SPECIFICATIONS FOR GEODETIC CONTROL NETWORKS, AS PUBLISHED BY THE FEDERAL GEODETIC CONTROL COMMITTEE DATED SEPTEMBER 1984 OR LATEST EDITION.
COORDINATE VALUES SHOWN ARE BASED ON PASCO COUNTY FIRST ORDER CONTROL POINT X10 022 AND PASCO COUNTY FIRST ORDER CONTROL POINT X10 021. THESE GRID VALUES ARE NORTH AMERICAN DATUM 1983/1990, FLORIDA WEST ZONE 0902, IN FEET CONVERTED USING 3.28083333.
 - ALL OPEN SPACE, DRAINAGE AREAS, RETENTION AND DETENTION PONDS, COMMON AREAS, BUFFER AREAS AND PRESERVATION AREAS ARE TO BE CONVEYED TO THE RIVERCHASE HOMEOWNERS ASSOCIATION, INC.
 - ALL LINES ALONG CURVES ARE RADIAL UNLESS INDICATED OTHERWISE (NR).

LEGEND

- = PERMANENT CONTROL POINT SET LB6113
- = PERMANENT REFERENCE MONUMENT SET LB6113 4"x4"
- = SET IRON ROD 1/2" LB # 6113
- = FOUND CONCRETE MONUMENT LS/LB AS NOTED
- (R) = RADIAL LINE
- (NR) = NON - RADIAL LINE
- P.O.B. = POINT OF BEGINNING
- FN&D = FOUND NAIL & DISK
- O.R. BOOK = OFFICIAL RECORD BOOK
- O/A = OVERALL
- (TYP) = TYPICAL
- SWFMD = SOUTHWEST FLORIDA WATER MANAGEMENT DISTRICT

POLARIS ASSOCIATES INC.
PROFESSIONAL SURVEYING
2915 S.R. 540, SUITE 17
CLEARWATER, FLORIDA 33789
(727) 888-0822