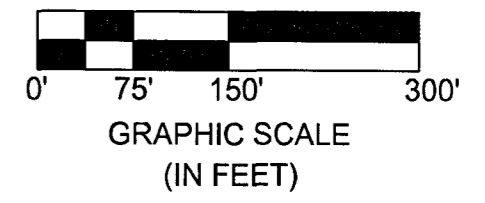
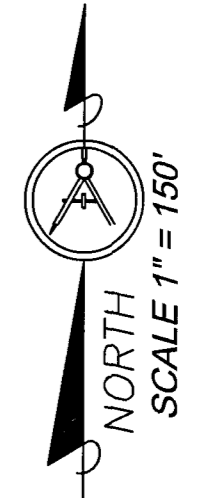
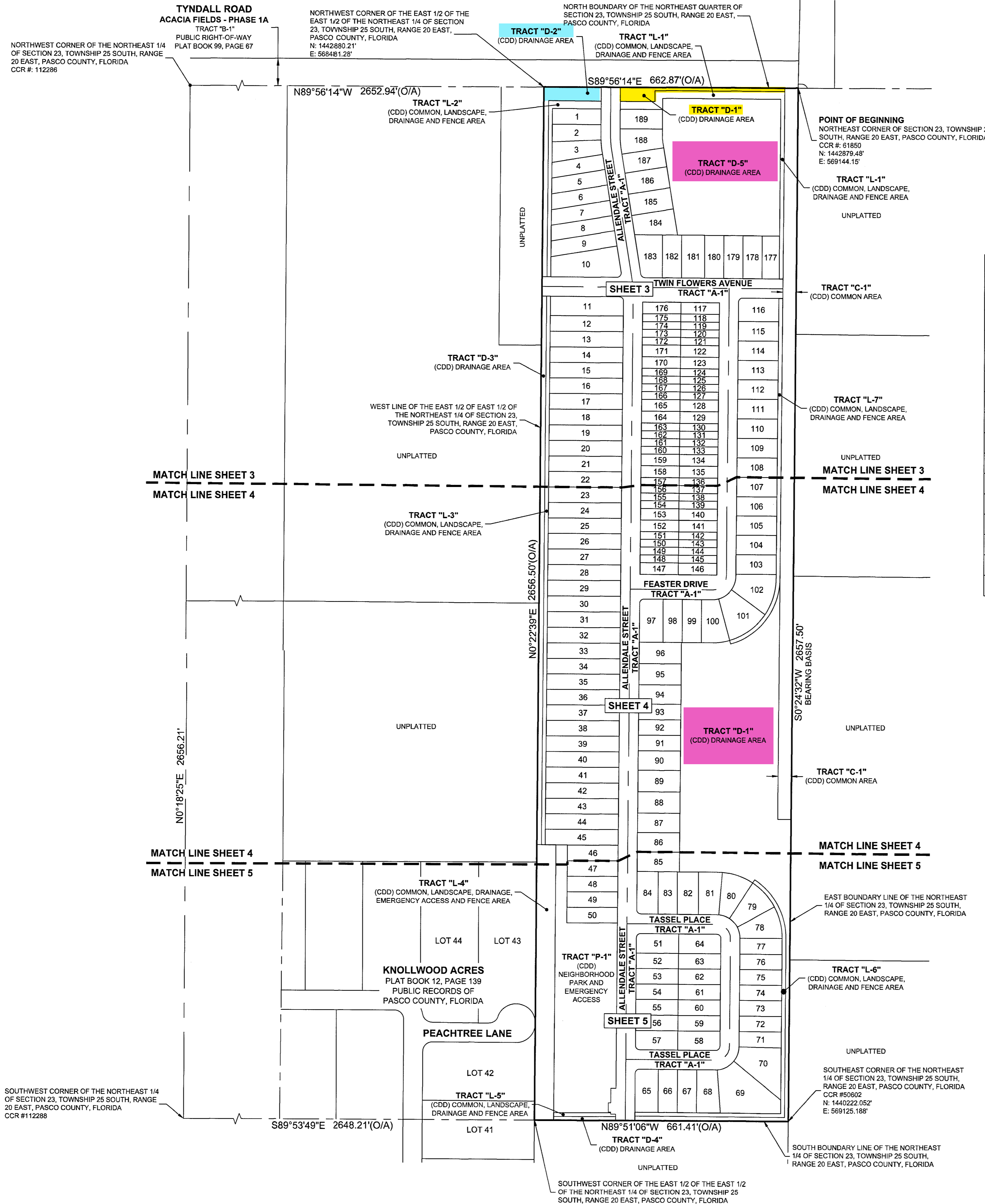


TWINFLOWERS
LYING WITHIN SECTION 23, TOWNSHIP 25 SOUTH, RANGE 20 EAST, PASCO COUNTY, FLORIDA



KEY MAP



TRACT DESIGNATION TABLE	
TRACT	USAGE
"A-1"	(CDD) RIGHT-OF-WAY, (PUBLIC) UTILITY EASEMENT
"C-1"	(CDD) COMMON AREA
"D-1"	(CDD) DRAINAGE AREA
"D-2"	(CDD) DRAINAGE AREA
"D-3"	(CDD) DRAINAGE AREA
"D-4"	(CDD) DRAINAGE AREA
"D-5"	(CDD) DRAINAGE AREA
"L-1"	(CDD) COMMON, LANDSCAPE, DRAINAGE AND FENCE AREA
"L-2"	(CDD) COMMON, LANDSCAPE, DRAINAGE AND FENCE AREA
"L-3"	(CDD) COMMON, LANDSCAPE, DRAINAGE AND FENCE AREA
"L-4"	(CDD) COMMON, LANDSCAPE, DRAINAGE, EMERGENCY ACCESS AND FENCE AREA
"L-5"	(CDD) COMMON, LANDSCAPE, DRAINAGE AND FENCE AREA
"L-6"	(CDD) COMMON, LANDSCAPE, DRAINAGE AND FENCE AREA
"L-7"	(CDD) COMMON, LANDSCAPE, DRAINAGE AND FENCE AREA
"P-1"	(CDD) NEIGHBORHOOD PARK AND EMERGENCY ACCESS

LEGEND:
 PRM - PERMANENT REFERENCE MONUMENT
 CCR - CERTIFIED CORNER RECORD
 O/A - OVERALL
 L.L.C. - LIMITED LIABILITY CORPORATION
 LB - LICENSED BUSINESS
 - - BREAK LINE (NOT TO SCALE)

TWINFLOWERS

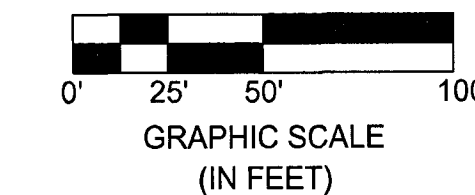
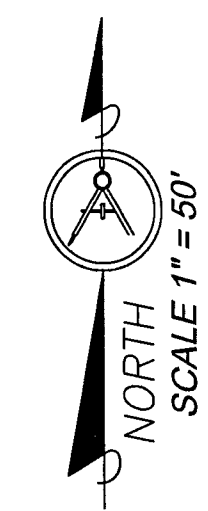
LYING WITHIN SECTION 23, TOWNSHIP 25 SOUTH, RANGE 20 EAST, PASCO COUNTY, FLORIDA

TYNDALL ROAD
ACACIA FIELDS - PHASE 1A
TRACT "B-1"
PUBLIC RIGHT-OF-WAY
PLAT BOOK 99, PAGE 67

NORTHWEST CORNER OF THE EAST 1/2 OF THE EAST 1/2 OF THE NORTHEAST 1/4 OF SECTION 23, TOWNSHIP 25 SOUTH, RANGE 20 EAST, PASCO COUNTY, FLORIDA
N: 1442880.21'
E: 568481.28'

NORTH BOUNDARY LINE OF THE NORTHEAST QUARTER OF SECTION 23, TOWNSHIP 25 SOUTH, RANGE 20 EAST, PASCO COUNTY, FLORIDA

POINT OF BEGINNING
NORTHEAST CORNER OF SECTION 23, TOWNSHIP 25 SOUTH, RANGE 20 EAST, PASCO COUNTY, FLORIDA
C.R.#: 81850
N: 1442879.48'
E: 569144.15'



LEGEND:

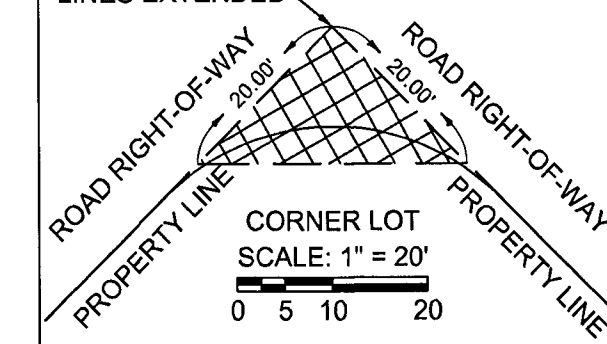
- PRM - PERMANENT REFERENCE MONUMENT
- CCR - CERTIFIED CORNER RECORD
- CST - CLEAR SIGHT TRIANGLE
- O/A - OVERALL
- (NR) - NON-RADIAL CURVE
- (P) - PER PLAT
- DE - DRAINAGE EASEMENT
- PUE - PUBLIC UTILITY EASEMENT
- NO. - NUMBER
- L.L.C. - LIMITED LIABILITY CORPORATION
- LB - LICENSED BUSINESS
- PCP - PERMANENT CONTROL POINT
- - SET 4"x4" CONCRETE MONUMENT WITH DISK STAMPED "PRM LB 8323"
- - SET NAIL AND DISK STAMPED "PCP LB 8323"

LINE DATA TABLE

NO.	BEARING	LENGTH
L1	S 09°45'25" E	7.08'
L5	N 89°35'28" W	10.00'
L6	N 89°35'28" W	110.00'
L8	S 89°38'50" E	12.59'
L9	S 89°35'28" E	136.78'
L17	S 89°35'28" E	10.00'
L18	N 89°35'28" W	10.00'
L19	S 89°35'28" E	12.56'
L26	N 89°35'28" W	10.00'
L27	N 00°24'32" E	28.75'
L29	N 00°17'04" E	28.75'
L30	S 64°40'39" W	27.52'

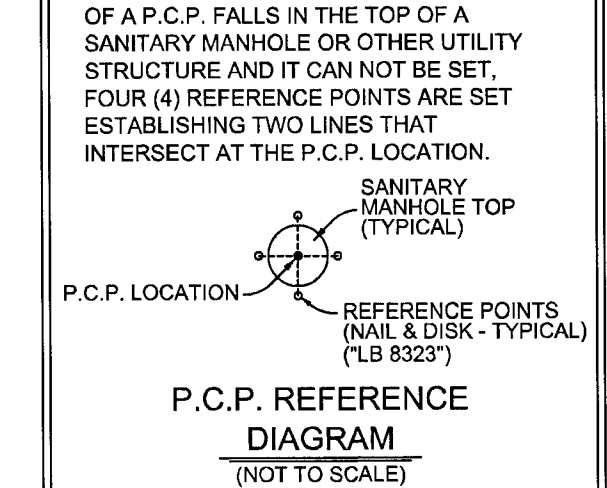
TYPICAL CLEAR SIGHT TRIANGLE FOR ALL CORNER LOTS

POINT OF INTERSECTION OF THE CORNER LOT PROPERTY LINES EXTENDED

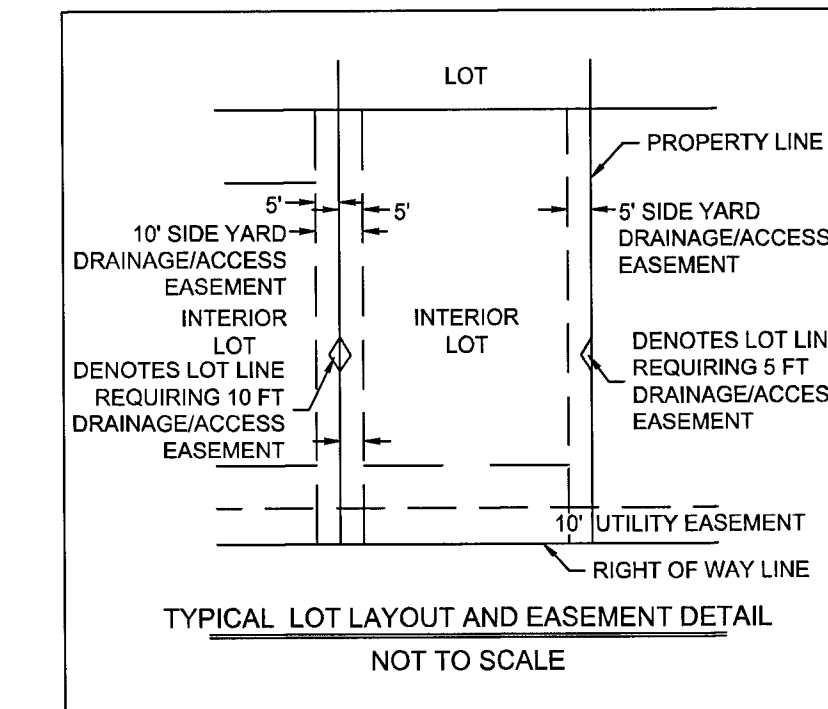


NOTE: NOTHING ABOVE THREE AND ONE HALF FEET IN HEIGHT SHALL BE ERECTED, PLACED, OR PLANTED WITHIN THE CLEAR SIGHT TRIANGLE ON ALL CORNER LOTS.

NOTE: IN THE CASE WHERE THE LOCATION OF A P.C.P. FALLS IN THE TOP OF A SANITARY MANHOLE OR OTHER UTILITY STRUCTURE AND IT CAN NOT BE SET, FOUR (4) REFERENCE POINTS ARE SET ESTABLISHING TWO LINES THAT INTERSECT AT THE P.C.P. LOCATION.



P.C.P. REFERENCE DIAGRAM (NOT TO SCALE)



TYPICAL LOT LAYOUT AND EASEMENT DETAIL (NOT TO SCALE)

CURVE DATA TABLE

NO.	RADIUS	DELTA	ARC	CHORD	BEARING
C1	275.00'	2°52'47"	13.82'	13.82'	S 01°01'52" E
C2	275.00'	6°44'39"	32.37'	32.35'	S 05°50'35" E
C3	11.00'	99°37'28"	19.13'	16.81'	S 40°35'49" W
C4	11.00'	90°00'00"	17.28'	15.56'	S 44°35'28" W
C20	11.00'	90°00'00"	17.28'	15.56'	S 45°24'32" W
C21	11.00'	80°22'34"	15.43'	14.20'	S 49°24'11" E
C22	225.00'	9°37'26"	37.79'	37.75'	S 04°24'11" E
C23	250.00'	9°37'26"	41.99'	41.94'	S 04°24'11" E
C31	115.00'	9°37'26"	19.32'	19.29'	N 04°24'11" W
C34	20.00'	19°25'05"	6.78'	6.75'	N 09°18'03" W

UNPLATTED

MATCH LINE SHEET 4

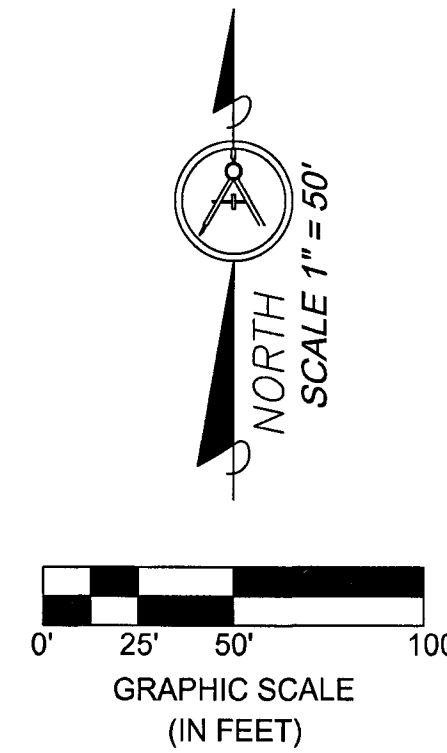
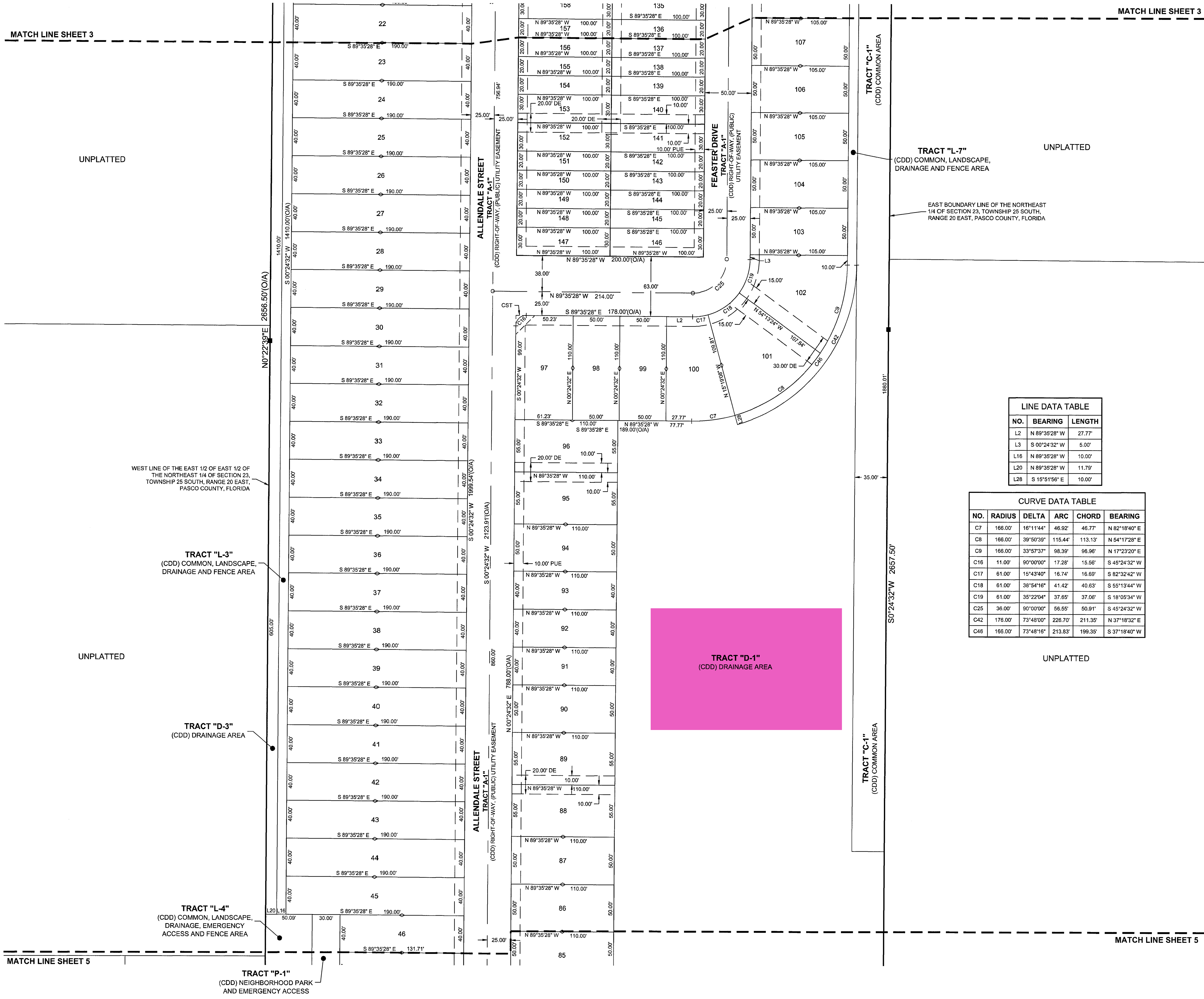
MATCH LINE SHEET 4

SHEET 3 OF 5

TAMPA CIVIL DESIGN, L.L.C.
ENGINEERING - SURVEYING - DESIGN
17937 HUNTING BOW CIR, S-102
LUTZ, FL 33558
(813) 920-2005 PHONE
CERTIFICATE OF AUTHORIZATION NUMBER LB8323

TWINFLOWERS

LYING WITHIN SECTION 23, TOWNSHIP 25 SOUTH, RANGE 20 EAST, PASCO COUNTY, FLORIDA



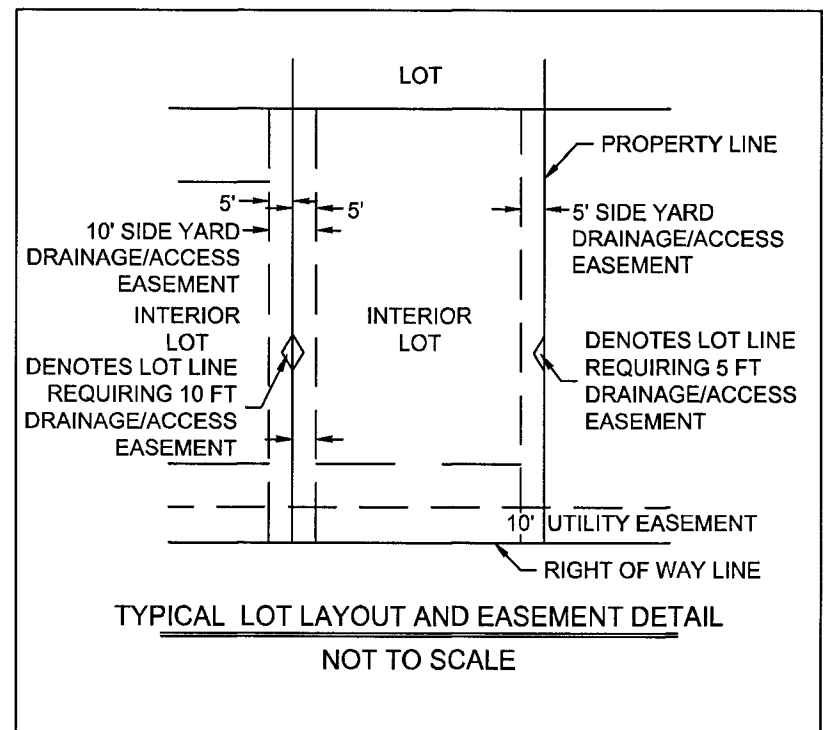
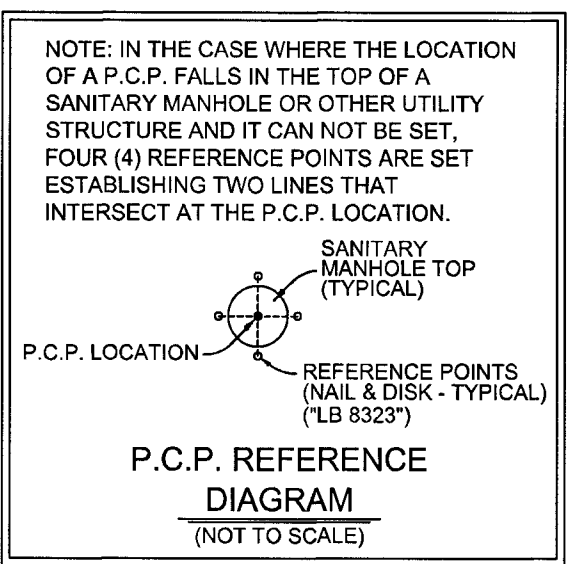
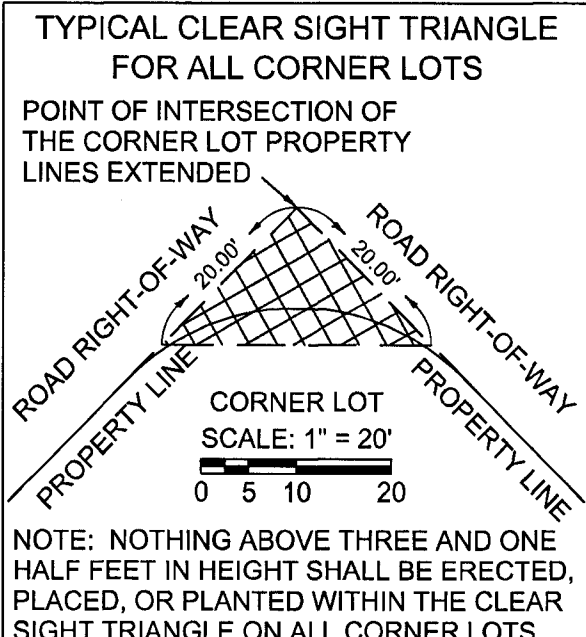
- LEGEND:**
- PRM - PERMANENT REFERENCE MONUMENT
 - CCR - CERTIFIED CORNER RECORD
 - CST - CLEAR SIGHT TRIANGLE
 - O/A - OVERALL
 - (NR) - NON-RADIAL CURVE
 - (P) - PER PLAT
 - DE - DRAINAGE EASEMENT
 - PUE - PUBLIC UTILITY EASEMENT
 - NO. - NUMBER
 - L.L.C. - LIMITED LIABILITY CORPORATION
 - LB - LICENSED BUSINESS
 - PCP - PERMANENT CONTROL POINT
 - - SET 4"x4" CONCRETE MONUMENT WITH DISK STAMPED "PRM LB 8323"
 - - SET NAIL AND DISK STAMPED "PCP LB 8323"

LINE DATA TABLE

NO.	BEARING	LENGTH
L2	N 89°35'28" W	27.77'
L3	S 00°24'32" W	5.00'
L16	N 89°35'28" W	10.00'
L20	N 89°35'28" W	11.79'
L28	S 15°51'56" E	10.00'

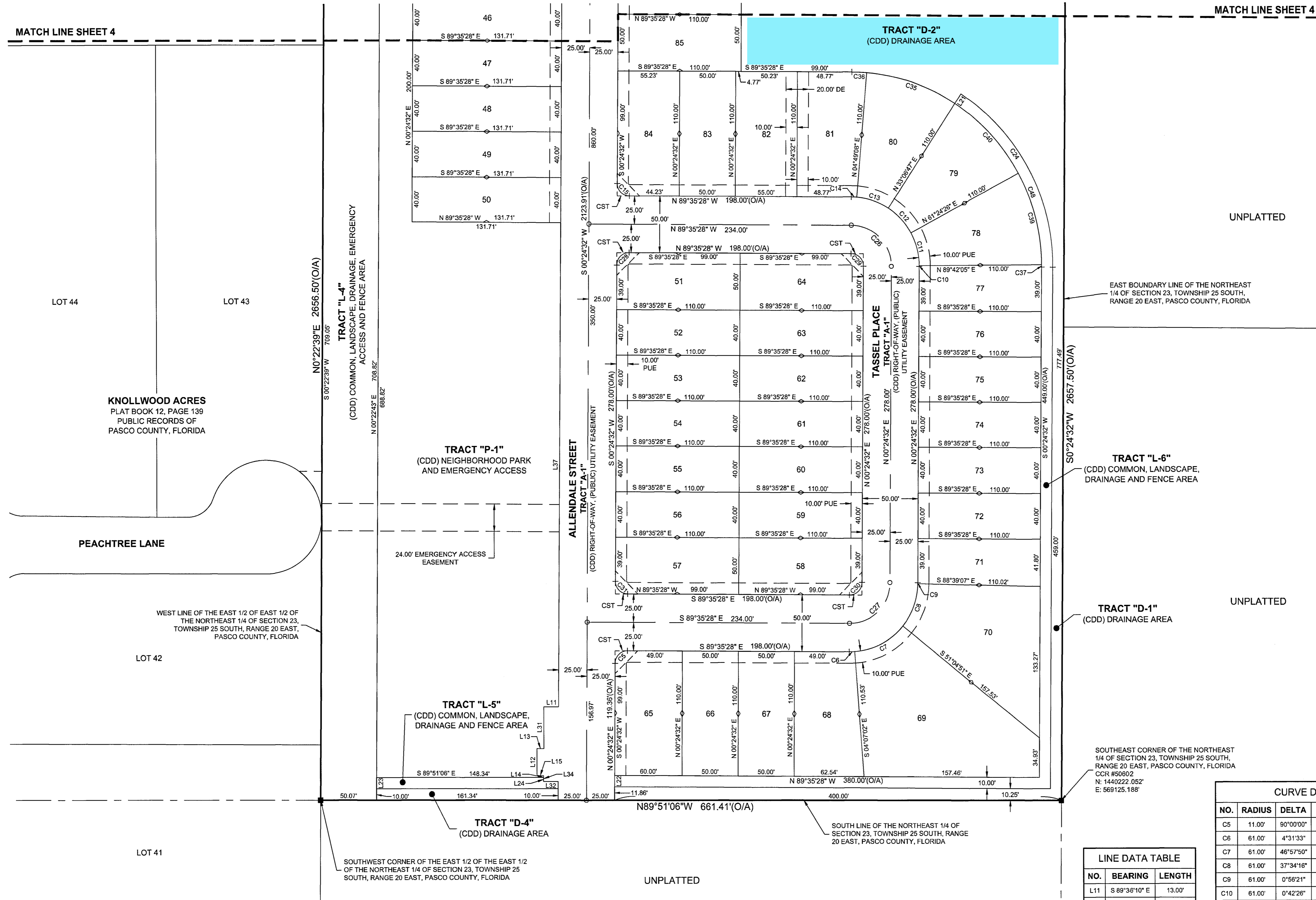
CURVE DATA TABLE

NO.	RADIUS	DELTA	ARC	CHORD	BEARING
C7	166.00'	16°11'44"	46.92'	46.77'	N 82°18'40" E
C8	166.00'	39°50'39"	115.44'	113.13'	N 54°17'28" E
C9	166.00'	33°57'37"	98.39'	96.96'	N 17°23'20" E
C16	11.00'	90°00'00"	17.28'	15.56'	S 45°24'32" W
C17	61.00'	15°43'40"	16.74'	16.69'	S 82°32'42" W
C18	61.00'	38°54'16"	41.42'	40.63'	S 55°13'44" W
C19	61.00'	35°22'04"	37.65'	37.06'	S 18°05'34" W
C25	36.00'	90°00'00"	56.55'	50.91'	S 45°24'32" E
C42	176.00'	73°48'00"	226.70'	211.35'	N 37°18'32" E
C46	166.00'	73°48'16"	213.83'	199.35'	S 37°18'40" W



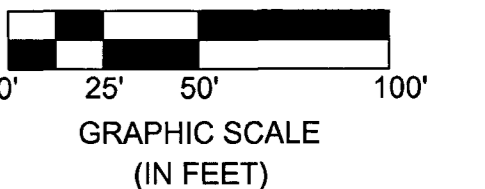
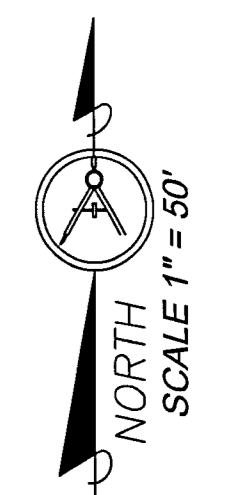
TWINFLOWERS

LYING WITHIN SECTION 23, TOWNSHIP 25 SOUTH, RANGE 20 EAST, PASCO COUNTY, FLORIDA

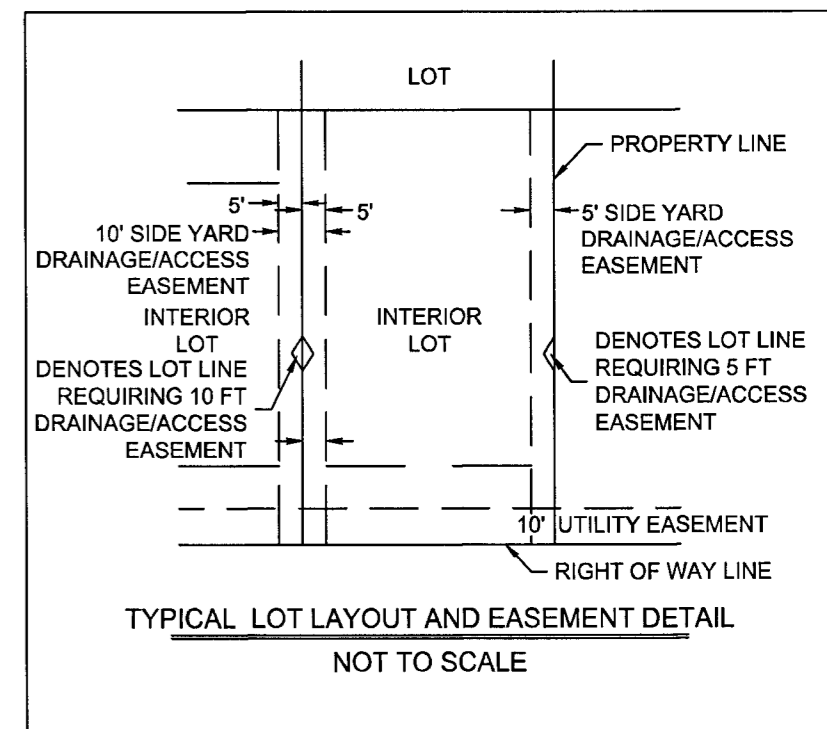
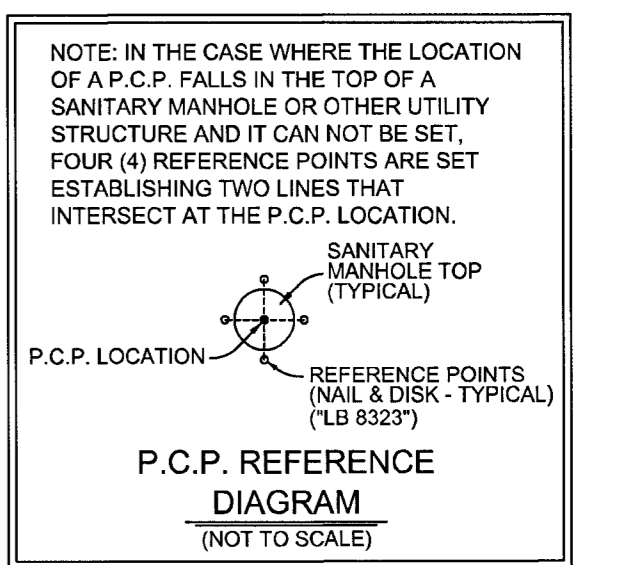
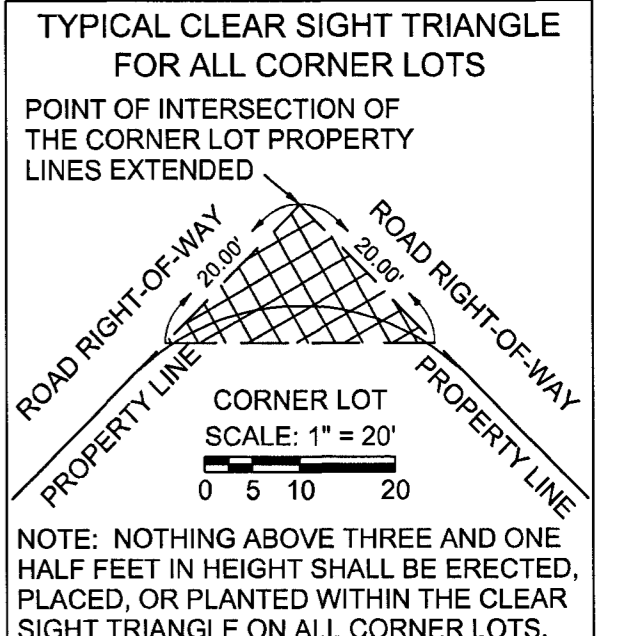


MATCH LINE SHEET 4

MATCH LINE SHEET 4



- LEGEND:**
- PRM - PERMANENT REFERENCE MONUMENT
 - CCR - CERTIFIED CORNER RECORD
 - CST - CLEAR SIGHT TRIANGLE
 - O/A - OVERALL
 - (NR) - NON-RADIAL CURVE
 - (P) - PER PLAT
 - DE - DRAINAGE EASEMENT
 - PUE - PUBLIC UTILITY EASEMENT
 - NO. - NUMBER
 - L.L.C. - LIMITED LIABILITY CORPORATION
 - LB - LICENSED BUSINESS
 - PCP - PERMANENT CONTROL POINT
 - - SET 4"x4" CONCRETE MONUMENT WITH DISK STAMPED "PRM LB 8323"
 - - SET NAIL AND DISK STAMPED "PCP LB 8323"



LINE DATA TABLE

NO.	BEARING	LENGTH
L11	S 89°36'10" E	13.00'
L12	N 00°24'32" E	24.00'
L13	S 89°35'28" E	6.00'
L14	N 00°24'33" E	1.57'
L15	N 89°35'28" W	6.00'
L21	S 33°06'47" W	10.00'
L22	S 00°24'32" W	10.00'
L23	N 00°21'29" E	10.00'
L24	S 00°24'31" W	3.43'
L31	N 00°24'31" E	37.00'
L32	S 89°35'28" E	13.00'
L34	S 00°24'33" W	5.00'
L37	N 00°24'33" E	425.57'

CURVE DATA TABLE

NO.	RADIUS	DELTA	ARC	CHORD	BEARING
C5	11.00'	90°00'00"	17.28'	15.56'	S 45°24'32" W
C6	61.00'	4°31'33"	4.82'	4.82'	S 88°08'45" W
C7	61.00'	48°57'50"	50.00'	48.61'	S 62°24'03" W
C8	61.00'	37°34'16"	40.00'	39.29'	S 20°08'01" W
C9	61.00'	0°56'21"	1.00'	1.00'	S 00°52'42" W
C10	61.00'	0°42'26"	0.75'	0.75'	S 00°03'19" W
C11	61.00'	28°17'39"	30.12'	29.82'	S 14°26'44" E
C12	61.00'	28°17'39"	30.12'	29.82'	S 42°44'23" E
C13	61.00'	28°17'39"	30.12'	29.82'	S 71°02'03" E
C14	61.00'	4°24'36"	4.70'	4.69'	S 97°23'10" E
C15	61.00'	90°00'00"	17.28'	15.56'	S 44°35'28" E
C24	181.00'	57°17'45"	181.00'	173.55'	N 28°14'21" W
C26	36.00'	90°00'00"	56.55'	50.91'	N 44°35'28" E
C27	36.00'	90°00'00"	56.55'	50.91'	N 45°24'32" E
C28	11.00'	90°00'00"	17.28'	15.56'	N 44°35'28" E
C29	11.00'	90°00'00"	17.28'	15.56'	S 44°35'28" E
C30	11.00'	90°00'00"	17.28'	15.56'	S 45°24'32" W
C31	11.00'	90°00'00"	17.28'	15.56'	N 44°35'28" W
C35	171.00'	28°17'39"	84.44'	83.59'	N 71°02'03" W
C36	171.00'	4°24'36"	13.16'	13.16'	N 87°23'10" W
C37	171.00'	0°42'26"	2.11'	2.11'	N 00°03'19" E
C39	171.00'	28°17'39"	84.44'	83.59'	N 14°26'44" W
C40	171.00'	28°17'39"	84.44'	83.59'	N 42°44'23" W
C48	171.00'	57°17'45"	171.00'	163.96'	S 28°14'21" E