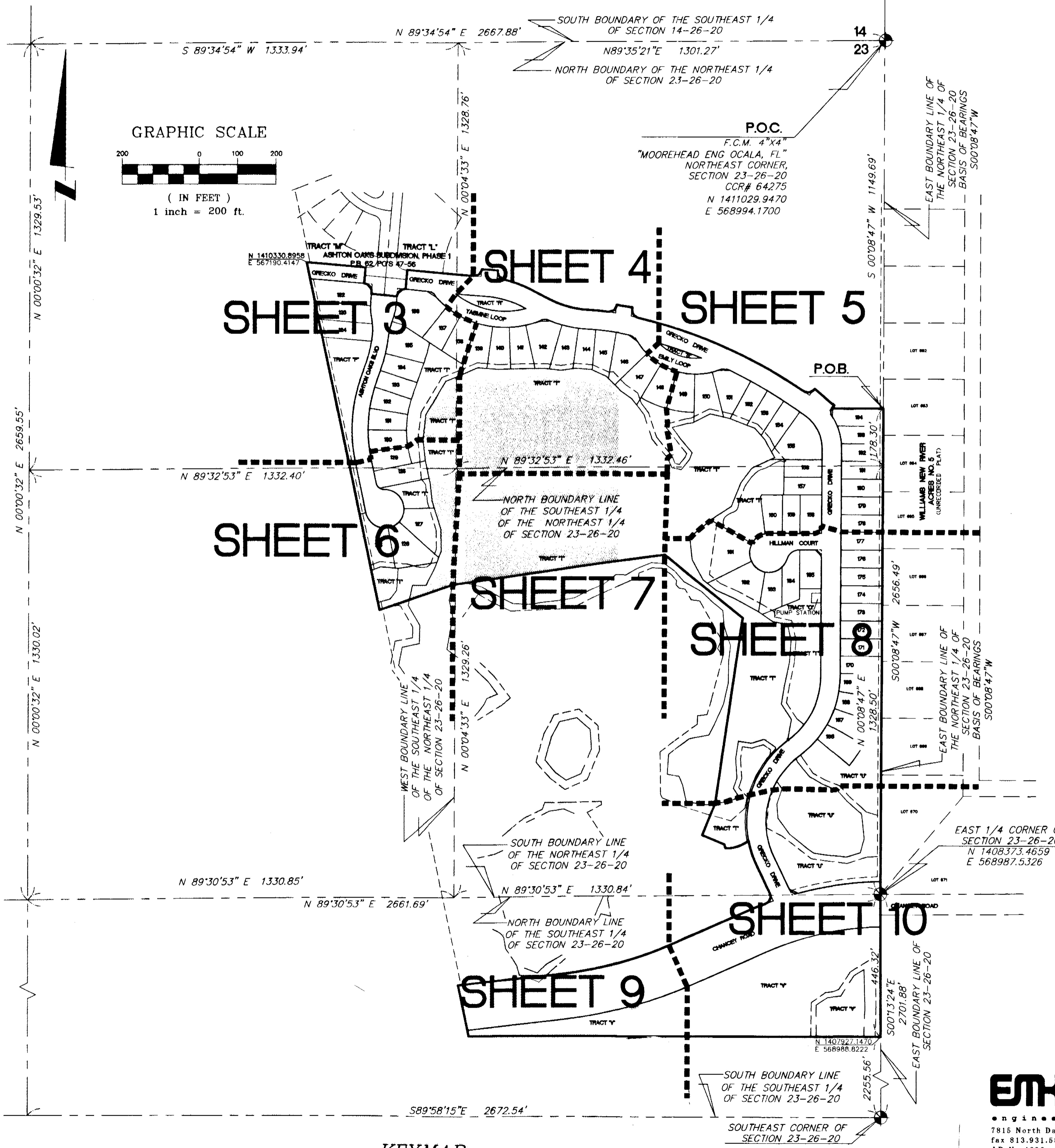


ASHTON OAKS SUBDIVISION, PHASE 2

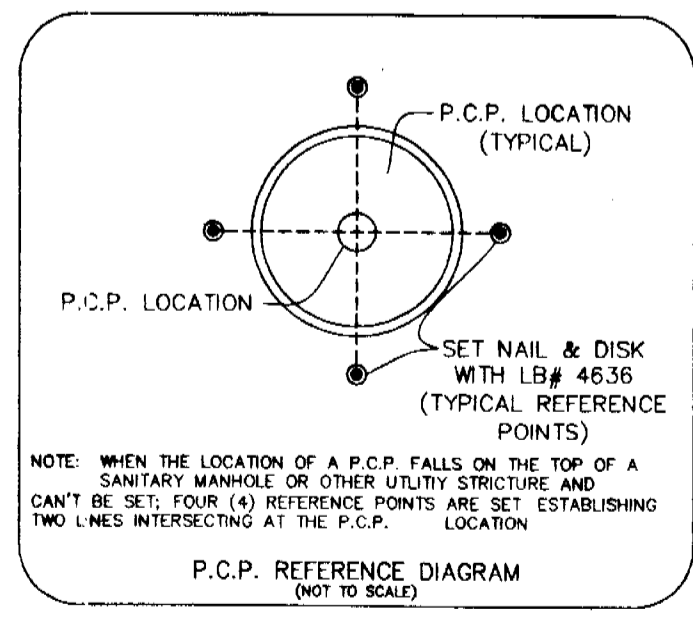
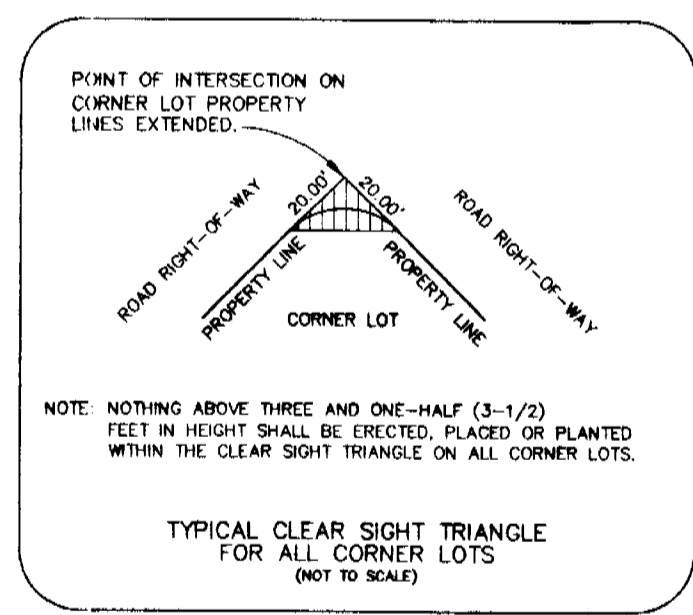
BEING A SUBDIVISION OF A PORTION OF SECTION 23, TOWNSHIP 26 SOUTH, RANGE 20 EAST
PASCO COUNTY, FLORIDA

PLAT BOOK **63** PAGE **101**



LEGEND

- FOUND 4"x4" CONC. MONUMENT LB# 4636 (P.R.M.)
- SET 4"x4" CONC. MONUMENT LB #4636(P.R.M.)
- △ FOUND P.K. NAIL & DISK LB#4636 (P.C.P.)
- ▲ SET P.K. NAIL & DISK LB#4636 (P.C.P.)
- SET CAPPED IRON ROD 5/8" LB #4636
- FOUND IRON PIPE- AS NOTED
- JURISDICTIONAL WETLAND POINT/ WETLAND BUFFER POINT
- F.C.I.R. FOUND CAPPED IRON ROD 5/8"
- S.C.M. SET CONCRETE MONUMENT (P.R.M.)
- S.P.K.&D. SET P.K. NAIL & DISK (P.R.M.)
- FIP FOUND IRON PIPE
- (NR) NON-RADIAL
- (F) FIELD MEASUREMENT
- O.R. OFFICIAL RECORDS BOOK
- FG. PAGE
- R/W RIGHT-OF-WAY
- F.C.M. FOUND CONCRETE MONUMENT
- P.C. POINT OF CURVE
- R.P. RADIUS POINT
- P.T. POINT OF TANGENCY
- P.O.C. POINT OF COMMENCEMENT
- P.O.B. POINT OF BEGINNING
- P.O.T. POINT OF TANGENT
- (T/P.) TYPICAL
- (O/A) OVERALL
- ↕ CENTERLINE
- ESMT EASEMENT



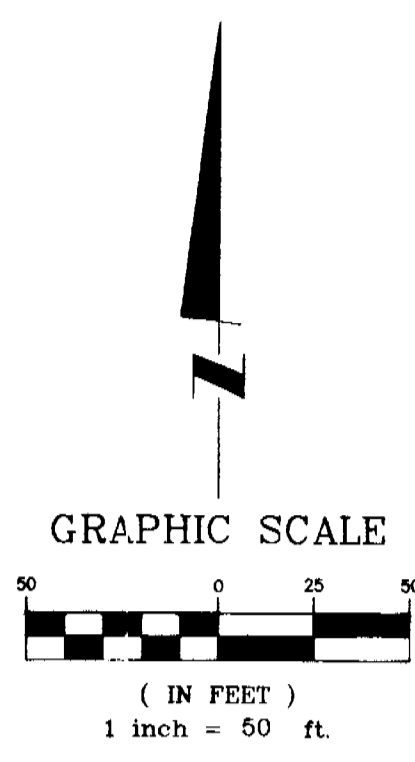
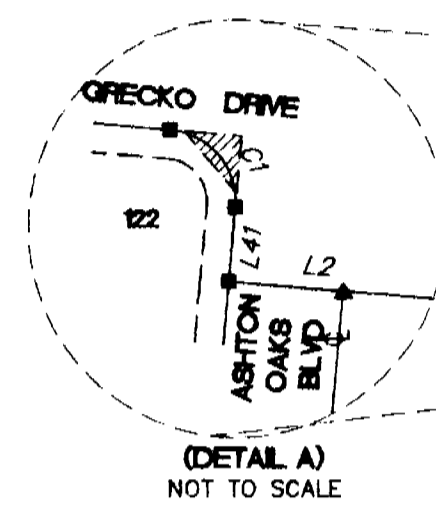
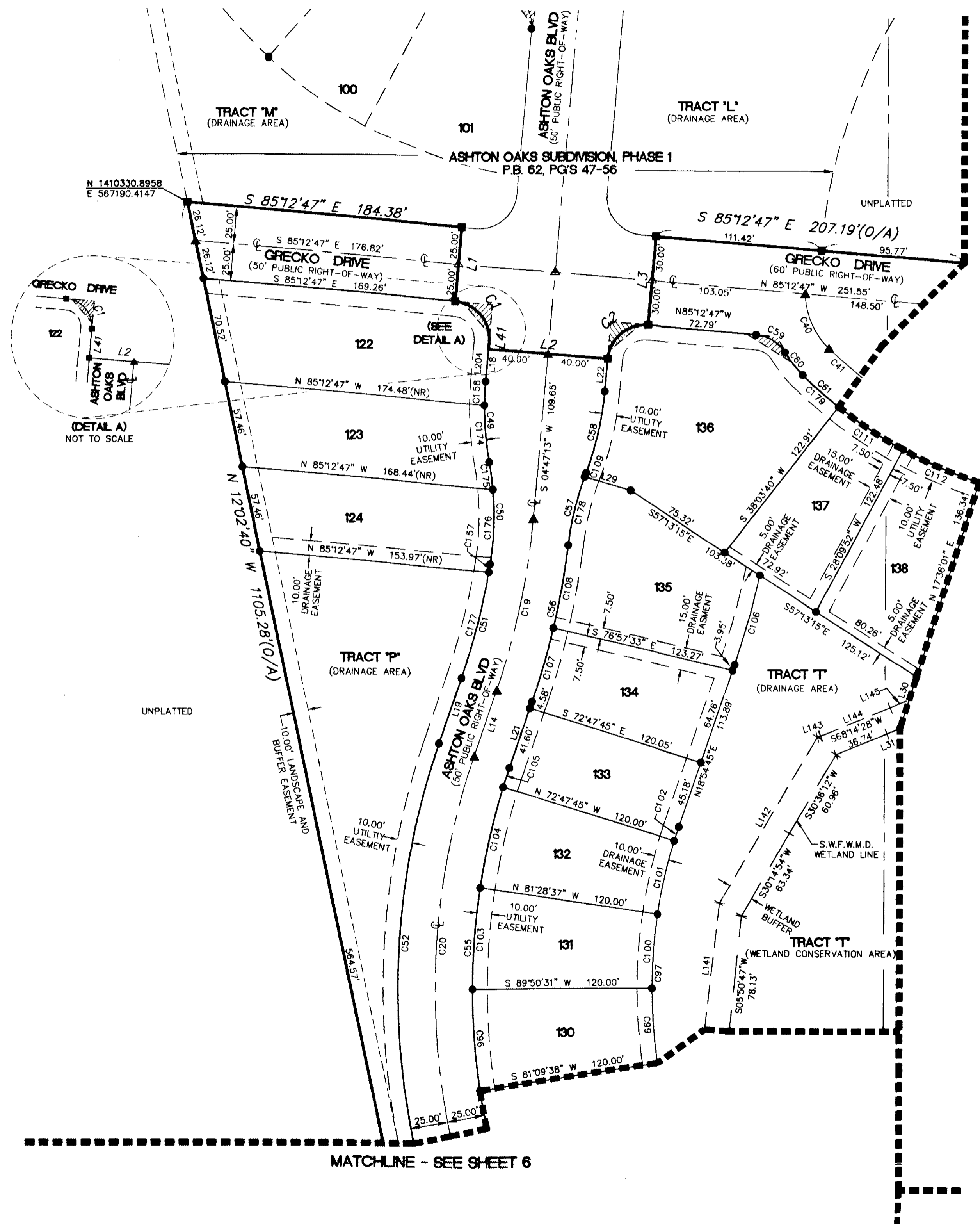
KEYMAP

EMK Consultants of Florida, Inc.
engineers surveyors land planners
7815 North Dale Mabry Highway, Suite 200 • Tampa, FL 33614 • 813.931.8900
fax 813.931.5848 • on the web: www.emkfla.com • e-mail: emk@emkfla.com
LB No. 4636

ASHTON OAKS SUBDIVISION, PHASE 2

BEING A SUBDIVISION OF A PORTION OF SECTION 23, TOWNSHIP 26 SOUTH, RANGE 20 EAST
PASCO COUNTY, FLORIDA

PLAT BOOK **63** PAGE **102**



| LINE | BEARING | LENGTH |
|------|-------------|---------|
| L1 | S04°47'13"W | 50.00' |
| L2 | S85°12'47"E | 80.00' |
| L3 | N04°47'13"E | 60.00' |
| L14 | S18°54'45"W | 46.18' |
| L18 | S04°47'13"W | 21.48' |
| L19 | S18°54'45"W | 46.18' |
| L21 | N18°54'45"E | 46.18' |
| L22 | S04°47'13"W | 21.61' |
| L29 | S73°45'12"E | 32.11' |
| L30 | S17°36'01"W | 36.01' |
| L31 | S66°48'19"W | 9.47' |
| L41 | S04°47'13"W | 5.00' |
| L141 | S06°31'24"W | 85.61' |
| L142 | S03°36'30"W | 128.00' |
| L143 | S74°30'42"W | 2.24' |
| L144 | S67°57'50"W | 50.24' |
| L145 | S66°49'45"W | 66.88' |
| L204 | N04°47'13"E | 26.48' |

MATCHLINE - SEE SHEET 4

MATCHLINE - SEE SHEET 6

| CURVE | RADIUS | LENGTH | TANGENT | DELTA | CHORD BEARING | CHORD |
|-------|---------|---------|---------|-----------|---------------|---------|
| C1 | 25.00' | 39.27' | 25.00' | 90°00'00" | S40°12'47"E | 35.36' |
| C2 | 25.00' | 39.27' | 25.00' | 90°00'00" | N49°47'13"E | 35.36' |
| C19 | 475.00' | 117.10' | 58.85' | 14°07'32" | N11°50'59"E | 116.81' |
| C20 | 475.00' | 256.70' | 131.57' | 30°57'50" | S03°25'49"W | 253.59' |
| C40 | 53.00' | 40.67' | 21.40' | 43°58'11" | S23°50'04"E | 39.68' |
| C41 | 275.00' | 302.87' | 168.86' | 63°06'07" | S77°22'13"E | 287.79' |
| C49 | 200.00' | 53.73' | 27.03' | 15°23'38" | S02°54'36"E | 53.57' |
| C50 | 200.00' | 68.15' | 34.41' | 19°31'30" | N00°50'40"W | 67.83' |
| C51 | 450.00' | 78.50' | 39.35' | 9°59'40" | N13°54'55"E | 78.40' |
| C52 | 500.00' | 270.21' | 138.49' | 30°57'50" | S03°25'49"W | 266.94' |
| C55 | 450.00' | 243.19' | 124.64' | 30°57'50" | S03°25'49"W | 240.24' |
| C56 | 500.00' | 107.80' | 54.11' | 12°21'11" | N12°44'11"E | 107.59' |
| C57 | 200.00' | 49.37' | 24.81' | 14°08'37" | S13°37'54"W | 49.25' |
| C58 | 200.00' | 55.56' | 27.96' | 15°55'00" | N12°44'43"E | 55.38' |
| C59 | 25.00' | 23.39' | 12.63' | 53°35'51" | N58°24'51"W | 22.54' |
| C60 | 78.00' | 19.34' | 9.72' | 14°12'14" | S38°43'02"E | 19.29' |
| C61 | 300.00' | 330.40' | 184.21' | 63°06'07" | S77°22'13"E | 313.95' |
| C96 | 450.00' | 68.18' | 34.16' | 8°40'52" | S04°29'56"E | 68.12' |
| C97 | 330.00' | 214.98' | 111.46' | 37°19'33" | S00°14'58"W | 211.20' |
| C99 | 330.00' | 50.00' | 25.05' | 8°40'52" | S04°29'56"E | 49.95' |
| C100 | 330.00' | 50.00' | 25.05' | 8°40'52" | S04°10'57"W | 49.95' |
| C101 | 330.00' | 50.00' | 25.05' | 8°40'52" | S12°51'49"W | 49.95' |
| C102 | 330.00' | 9.84' | 4.92' | 1°42'30" | S18°03'30"W | 9.84' |
| C103 | 450.00' | 68.18' | 34.16' | 8°40'52" | S04°10'57"W | 68.12' |
| C104 | 450.00' | 68.18' | 34.16' | 8°40'52" | S12°51'49"W | 68.12' |
| C105 | 450.00' | 13.42' | 6.71' | 1°42'30" | S18°03'30"W | 13.42' |
| C106 | 520.00' | 62.36' | 31.22' | 6°52'15" | N15°28'37"E | 62.32' |
| C107 | 500.00' | 51.24' | 25.64' | 5°52'19" | N15°58'36"E | 51.22' |
| C108 | 500.00' | 56.56' | 28.31' | 6°28'52" | N09°48'01"E | 56.53' |
| C109 | 200.00' | 2.80' | 1.40' | 0°48'12" | S20°18'07"W | 2.80' |
| C111 | 300.00' | 51.82' | 25.97' | 9°53'48" | S56°53'14"E | 51.76' |
| C112 | 300.00' | 55.31' | 27.74' | 10°33'51" | S67°07'03"E | 55.23' |
| C157 | 450.00' | 5.45' | 2.73' | 0°41'38" | N09°15'54"E | 5.45' |
| C158 | 200.00' | 16.04' | 8.02' | 4°35'42" | S02°29'22"W | 16.04' |
| C174 | 200.00' | 32.70' | 18.90' | 10°47'56" | S05°12'27"E | 32.64' |
| C175 | 200.00' | 18.39' | 9.20' | 5°16'09" | N07°58'20"W | 18.39' |
| C176 | 200.00' | 49.76' | 25.01' | 1°41'52" | N01°47'24"E | 49.63' |
| C177 | 450.00' | 73.05' | 36.60' | 9°18'01" | N14°15'44"E | 72.97' |
| C178 | 200.00' | 46.57' | 23.39' | 13°20'26" | S13°13'48"W | 46.46' |
| C179 | 300.00' | 32.04' | 16.04' | 6°07'11" | S48°52'44"E | 32.03' |

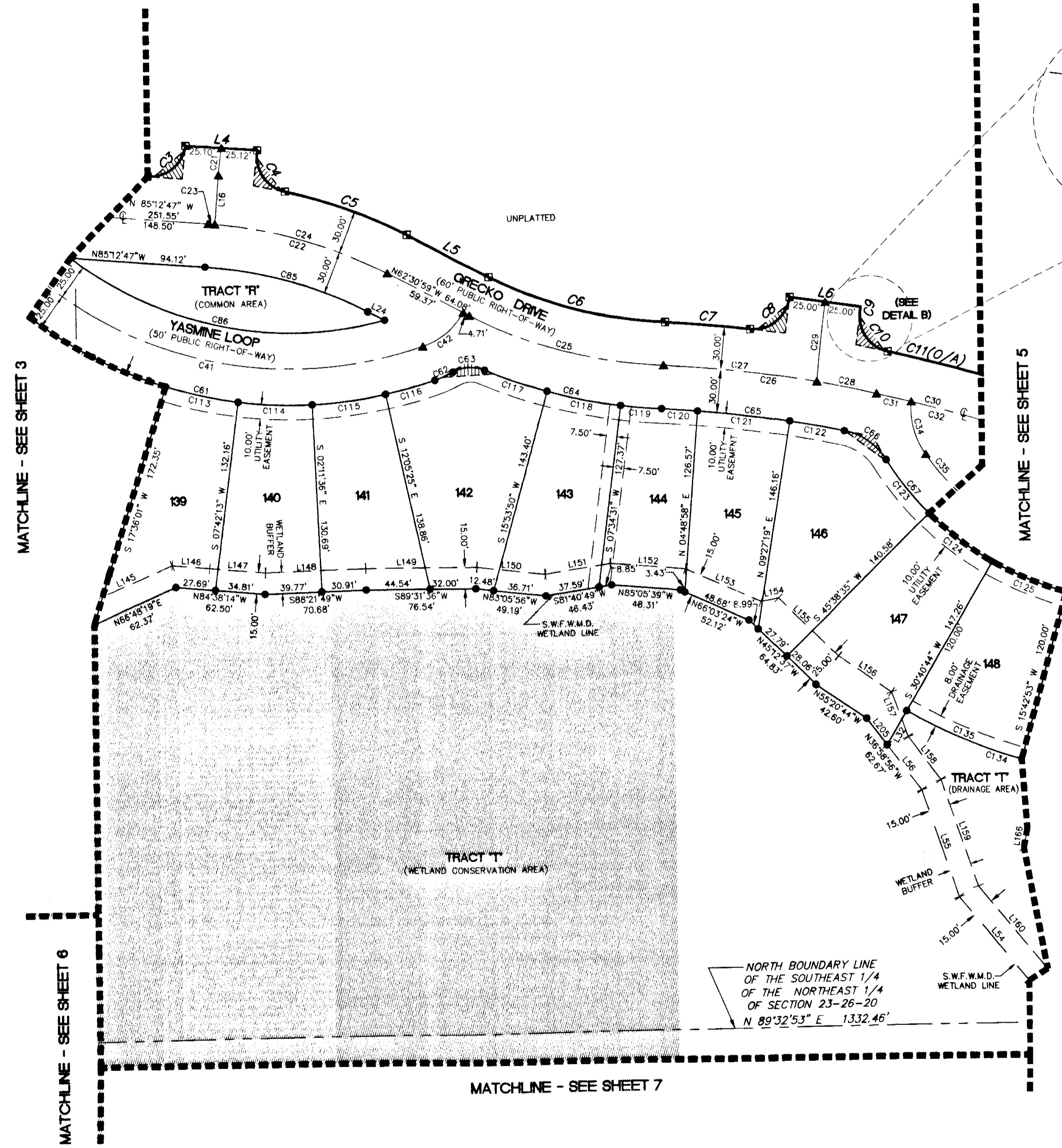
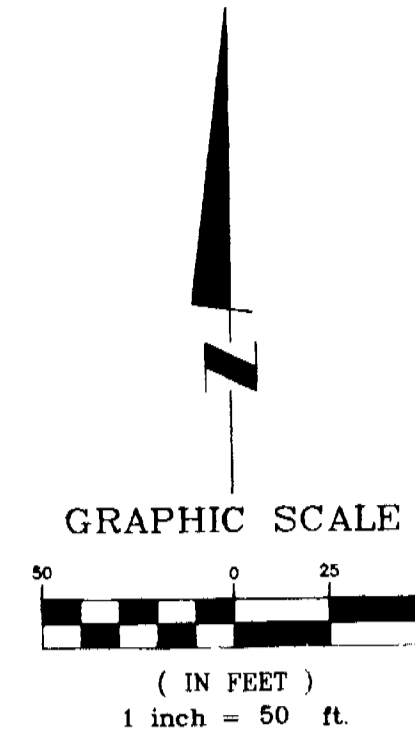
NOTE: SEE SHEET 2 OF 10 FOR KEYMAP, DETAILS AND LEGEND

EMK Consultants of Florida, Inc.
 engineers surveyors land planners
 7815 North Dale Mabry Highway, Suite 200 • Tampa, FL 33614 • 813.931.8900
 fax 813.931.5848 • on the web: www.emkfla.com • e-mail: emk@emkfla.com
 LB No. 4636

ASHTON OAKS SUBDIVISION, PHASE 2

BEING A SUBDIVISION OF A PORTION OF SECTION 23, TOWNSHIP 26 SOUTH, RANGE 20 EAST
PASCO COUNTY, FLORIDA

PLAT BOOK **63** PAGE **103**



| LINE | BEARING | LENGTH |
|------|-------------|--------|
| L4 | S85°35'23"E | 50.22' |
| L5 | S62°30'59"E | 64.08' |
| L6 | S81°44'55"E | 50.00' |
| L16 | N04°47'13"E | 34.29' |
| L24 | N62°30'59"W | 12.98' |
| L32 | N30°40'44"E | 27.26' |
| L54 | N39°17'17"W | 75.65' |
| L55 | N18°30'39"W | 79.08' |
| L56 | N36°58'56"W | 39.32' |
| L145 | S66°49'45"W | 66.88' |
| L146 | N84°38'43"W | 26.30' |
| L147 | N84°37'54"W | 39.10' |
| L148 | S88°21'49"W | 69.91' |
| L149 | S89°31'36"W | 77.66' |
| L150 | N83°05'56"W | 48.15' |
| L151 | S81°40'49"W | 46.17' |
| L152 | N85°05'39"W | 52.56' |
| L153 | N66°03'24"W | 57.39' |
| L154 | S80°46'42"W | 12.36' |
| L155 | N45°12'37"W | 58.11' |
| L156 | N55°20'44"W | 44.42' |
| L157 | N19°38'40"W | 33.56' |
| L158 | N36°58'56"W | 37.12' |
| L159 | N18°30'39"W | 78.77' |
| L160 | N39°17'17"W | 74.87' |
| L166 | S10°30'55"W | 14.11' |
| L205 | N36°58'56"W | 23.35' |

| CURVE | RADIUS | LENGTH | TANGENT | DELTA | CHORD BEARING | CHORD |
|-------|----------|---------|---------|-----------|---------------|---------|
| C3 | 25.00' | 37.35' | 23.15' | 85°35'38" | N51°59'25"E | 33.97' |
| C4 | 25.00' | 38.10' | 23.86' | 87°19'22" | S33°14'15"E | 34.52' |
| C5 | 360.00' | 90.37' | 45.42' | 14°22'57" | S69°42'28"E | 90.13' |
| C6 | 300.00' | 128.18' | 65.08' | 24°28'51" | S74°45'28"E | 127.21' |
| C7 | 860.00' | 59.78' | 29.89' | 3°58'54" | S85°00'23"E | 59.75' |
| C8 | 25.00' | 38.72' | 24.45' | 88°43'59" | N52°37'04"E | 34.96' |
| C9 | 977.45' | 3.54' | 1.77' | 0°12'27" | S08°08'52"W | 3.54' |
| C10 | 25.00' | 36.32' | 22.75' | 84°36'53" | S34°15'48"E | 33.66' |
| C11 | 1560.00' | 568.01' | 287.19' | 20°51'43" | S66°08'24"E | 564.88' |
| C21 | 220.00' | 19.21' | 9.51' | 4°57'05" | S07°15'46"W | 19.01' |
| C22 | 330.00' | 130.72' | 66.23' | 22°41'48" | N73°51'53"W | 129.81' |
| C23 | 330.00' | 4.65' | 2.42' | 0°50'31" | N84°47'31"W | 4.85' |
| C24 | 330.00' | 125.87' | 63.71' | 21°51'17" | N73°26'38"W | 125.11' |
| C25 | 330.00' | 141.00' | 71.59' | 24°28'51" | S74°45'25"E | 139.93' |
| C26 | 830.00' | 150.36' | 75.39' | 10°22'46" | N81°48'27"W | 150.15' |
| C27 | 830.00' | 108.00' | 54.08' | 7°27'20" | N83°16'10"W | 107.93' |
| C28 | 830.00' | 42.35' | 21.18' | 2°55'26" | N78°04'47"W | 42.35' |
| C29 | 1002.45' | 55.43' | 27.72' | 3°10'05" | S06°40'02"W | 55.42' |
| C30 | 1530.00' | 610.02' | 309.12' | 22°50'39" | N65°11'45"W | 605.99' |
| C31 | 1530.00' | 24.80' | 12.40' | 0°55'44" | N76°09'12"W | 24.80' |
| C32 | 1530.00' | 262.77' | 131.71' | 9°50'29" | N70°48'08"W | 262.45' |
| C34 | 55.00' | 38.71' | 20.20' | 40°19'42" | S14°47'22"E | 37.92' |
| C35 | 188.00' | 235.03' | 135.66' | 71°37'39" | S70°46'08"E | 220.02' |
| C41 | 275.00' | 302.87' | 168.86' | 63°06'07" | S77°22'13"E | 287.79' |
| C42 | 53.00' | 37.66' | 19.66' | 40°42'34" | N50°43'27"E | 36.87' |
| C61 | 300.00' | 330.40' | 184.21' | 63°06'07" | S77°22'13"E | 313.95' |
| C62 | 78.00' | 13.25' | 6.99' | 10°14'54" | N65°57'17"E | 13.93' |
| C63 | 25.00' | 22.87' | 12.31' | 52°25'23" | S87°02'31"W | 22.08' |
| C64 | 360.00' | 127.24' | 64.29' | 20°15'03" | S76°52'19"E | 126.58' |
| C65 | 800.00' | 128.80' | 64.54' | 9°13'30" | N82°23'05"W | 128.66' |
| C66 | 45.00' | 36.36' | 19.24' | 46°17'54" | N54°37'24"W | 35.38' |
| C67 | 213.00' | 292.24' | 174.38' | 78°36'44" | S70°46'49"E | 269.86' |
| C113 | 300.00' | 51.92' | 25.97' | 9°53'48" | S77°20'53"E | 51.76' |
| C114 | 300.00' | 51.92' | 25.97' | 9°53'49" | S87°14'42"E | 51.76' |
| C115 | 300.00' | 51.92' | 25.97' | 9°53'49" | N82°51'30"E | 51.76' |
| C116 | 300.00' | 35.77' | 17.90' | 6°49'51" | N74°29'40"E | 35.75' |
| C117 | 360.00' | 46.22' | 23.14' | 7°21'23" | S70°48'28"E | 46.10' |
| C118 | 360.00' | 52.49' | 26.19' | 6°19'19" | S78°15'50"E | 52.24' |
| C119 | 360.00' | 28.73' | 14.37' | 4°34'21" | S84°42'40"E | 28.72' |
| C120 | 800.00' | 25.32' | 12.66' | 1°48'48" | N86°05'26"W | 25.32' |
| C121 | 800.00' | 64.77' | 32.41' | 4°38'21" | N82°51'51"W | 64.76' |
| C122 | 800.00' | 38.71' | 19.36' | 2°46'20" | N79°09'31"W | 38.70' |
| C123 | 213.00' | 47.89' | 24.05' | 12°52'58" | S37°54'56"E | 47.79' |
| C124 | 213.00' | 55.63' | 27.97' | 14°57'51" | S51°50'20"E | 55.47' |
| C125 | 213.00' | 55.63' | 27.97' | 14°57'51" | S66°48'11"E | 55.47' |
| C134 | 333.00' | 173.94' | 89.00' | 29°55'42" | S74°17'07"E | 171.97' |
| C135 | 333.00' | 86.97' | 43.73' | 14°57'51" | S66°48'11"E | 86.72' |

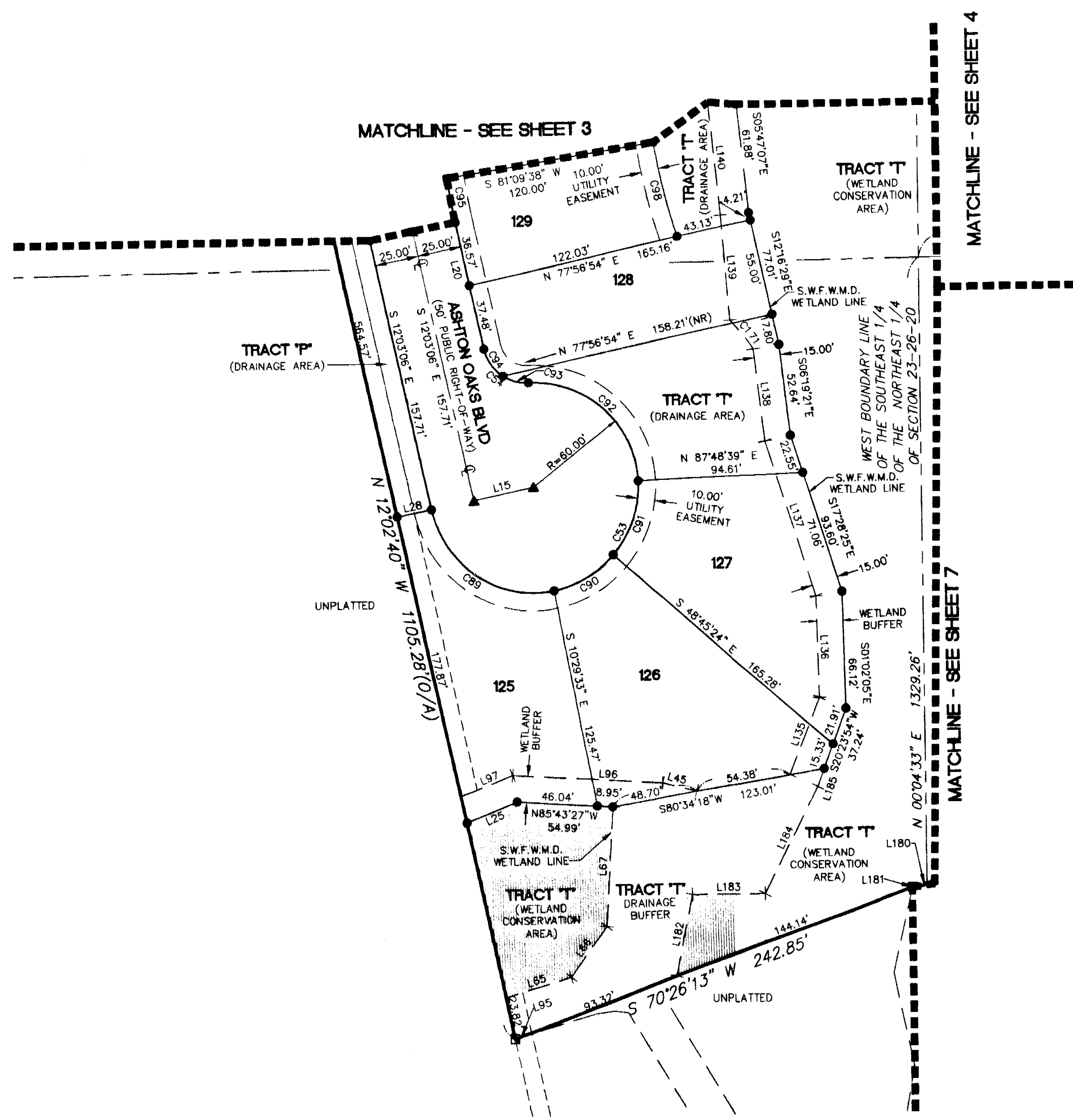
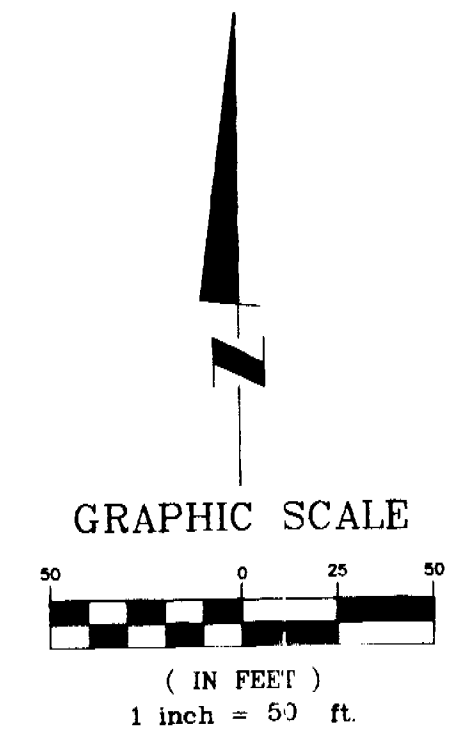
NOTE: SEE SHEET 2 OF 10 FOR KEYMAP, DETAILS AND LEGEND

EMK Consultants of Florida, Inc.
engineers surveyors land planners
7815 North Dale Mabry Highway, Suite 200 • Tampa, FL 33614 • 813-931-8900
fax 813-931-8848 • on the web: www.emkfla.com • e-mail: emk@emkfla.com
LB No. 4636

ASHTON OAKS SUBDIVISION, PHASE 2

BEING A SUBDIVISION OF A PORTION OF SECTION 23, TOWNSHIP 26 SOUTH, RANGE 20 EAST
PASCO COUNTY, FLORIDA

PLAT BOOK **63** PAGE **105**



| LINE | BEARING | LENGTH |
|------|-------------|--------|
| L15 | N77°56'54"E | 35.00' |
| L20 | N12°03'06"W | 74.05' |
| L25 | S68°00'08"W | 31.34' |
| L28 | S77°52'20"W | 20.08' |
| L45 | N75°02'44"W | 20.07' |
| L65 | S74°37'11"W | 39.00' |
| L66 | S36°13'54"W | 35.05' |
| L67 | S03°40'08"W | 68.26' |
| L95 | S74°37'31"W | 5.35' |
| L96 | S85°34'27"E | 86.08' |
| L97 | N68°00'08"E | 32.16' |
| L135 | S21°28'45"W | 47.86' |
| L136 | S01°02'05"E | 57.31' |
| L137 | S17°28'25"E | 92.90' |
| L138 | S06°19'21"E | 53.33' |
| L139 | S04°37'47"E | 59.78' |
| L140 | S05°35'03"E | 84.28' |
| L180 | N83°56'39"E | 12.71' |
| L181 | N13°03'58"E | 0.49' |
| L182 | S11°43'04"W | 46.93' |
| L183 | S89°46'57"W | 41.86' |
| L184 | S26°57'25"W | 68.19' |
| L185 | S20°23'54"W | 10.93' |

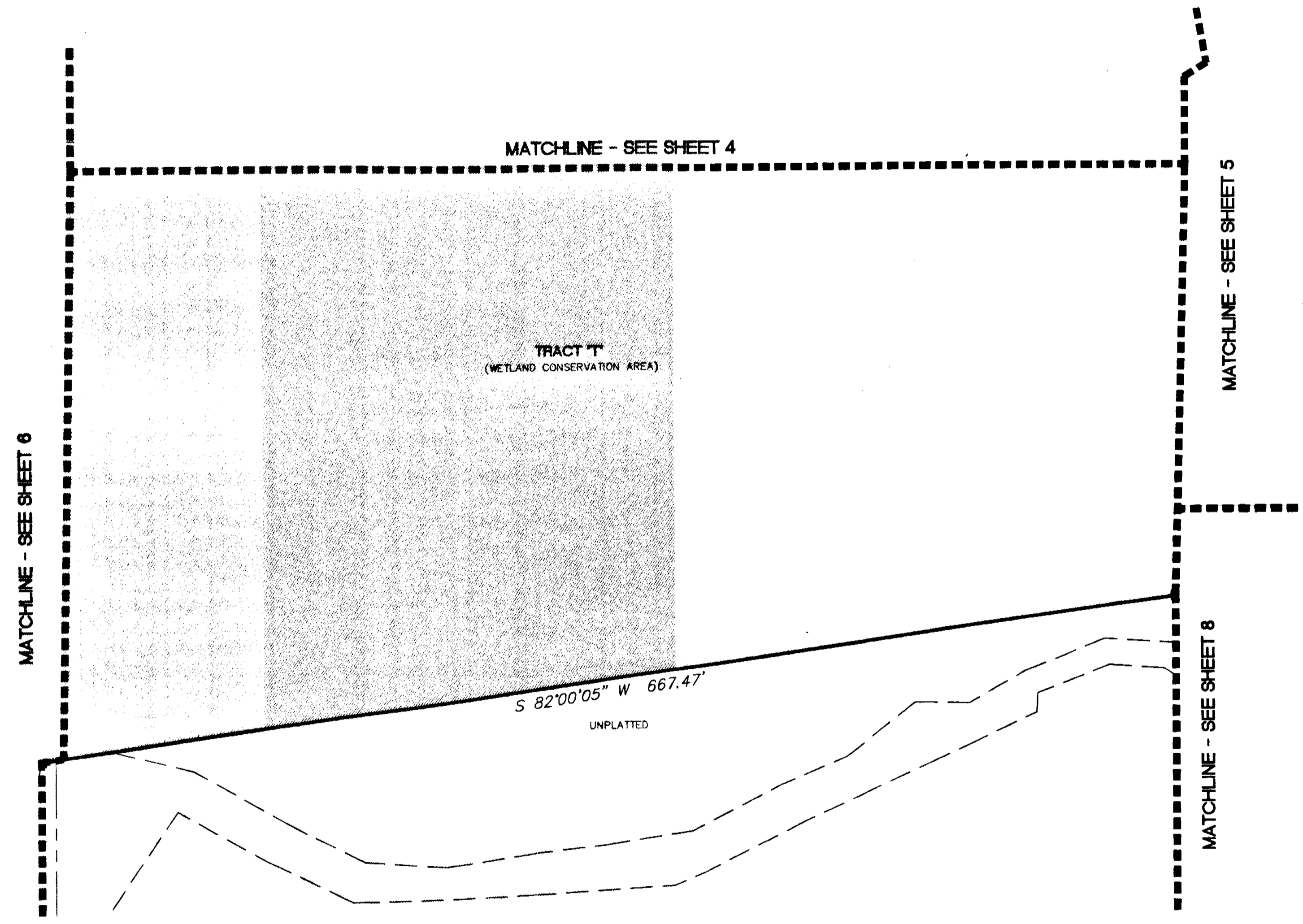
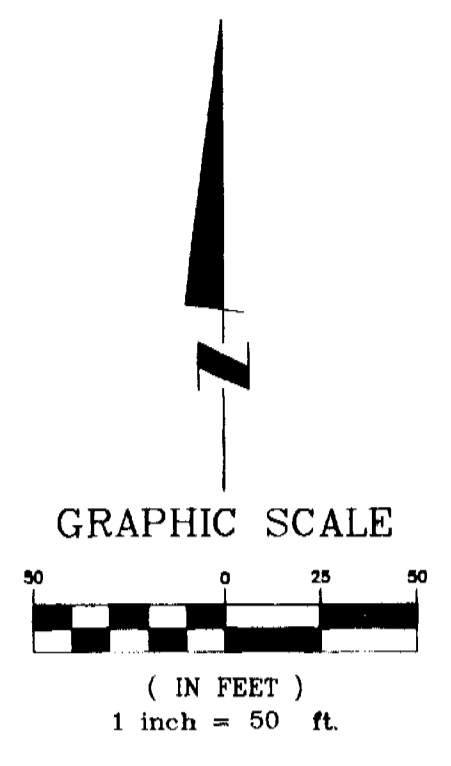
| CURVE | RADIUS | LENGTH | TANGENT | DELTA | CHORD BEARING | CHORD |
|-------|---------|---------|---------|------------|---------------|--------|
| C53 | 60.00' | 272.10' | 71.71' | 259°50'09" | N38°01'50"E | 92.04' |
| C54 | 25.00' | 34.83' | 20.92' | 79°50'09" | S51°58'10"E | 32.08' |
| C89 | 60.00' | 92.62' | 58.39' | 88°26'27" | S56°16'20"E | 83.69' |
| C90 | 60.00' | 40.07' | 20.81' | 38°15'51" | N60°22'32"E | 39.33' |
| C91 | 60.00' | 45.48' | 23.90' | 43°25'52" | N19°31'38"E | 44.40' |
| C92 | 60.00' | 93.93' | 59.88' | 89°41'54" | N47°02'18"W | 84.63' |
| C93 | 25.00' | 15.42' | 7.97' | 35°20'41" | S74°12'54"E | 15.18' |
| C94 | 25.00' | 19.41' | 10.23' | 44°29'22" | S34°17'49"E | 18.93' |
| C95 | 450.00' | 25.23' | 12.62' | 3°12'44" | S10°26'44"E | 25.23' |
| C98 | 330.00' | 55.14' | 27.64' | 8°34'26" | S13°37'35"E | 55.08' |
| C171 | 111.08' | 21.38' | 10.72' | 11°01'44" | N38°06'47"W | 21.35' |

NOTE: SEE SHEET 2 OF 10 FOR KEYMAP, DETAILS AND LEGEND

EMK Consultants of Florida, Inc.
engineers surveyors land planners
7815 North Dale Mabry Highway, Suite 200 • Tampa, FL 33614 • 813.931.8900
fax 813.931.5848 • on the web: www.emkfla.com • e-mail: emk@emkfla.com
LB No. 4636

ASHTON OAKS SUBDIVISION, PHASE 2
 BEING A SUBDIVISION OF A PORTION OF SECTION 23, TOWNSHIP 26 SOUTH, RANGE 20 EAST
 PASCO COUNTY, FLORIDA

PLAT BOOK **63** PAGE **106**



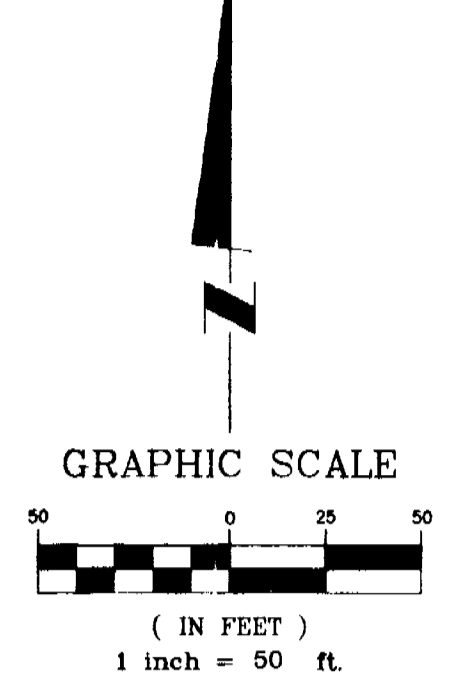
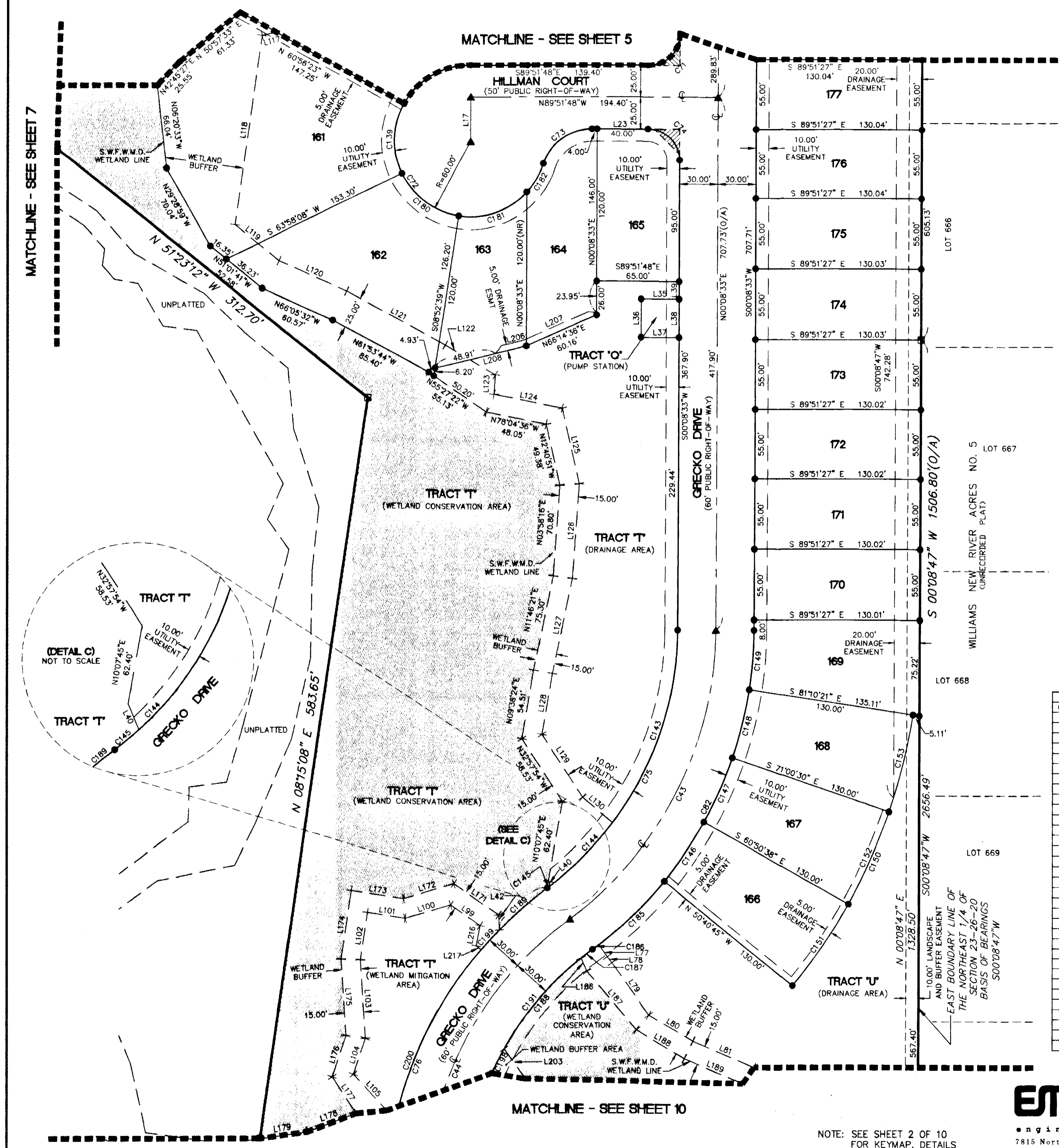
NOTE: SEE SHEET 2 OF 10
 FOR KEYMAP, DETAILS
 AND LEGEND

EMK Consultants of Florida, Inc.
 • engineers • surveyors • land planners •
 7815 North Dale Mabry Highway, Suite 200 • Tampa, FL 33614 • 813.931.8900
 fax 813.931.5848 • on the web: www.emkfla.com • e-mail: emk@emkfla.com
 LB No. 4636

ASHTON OAKS SUBDIVISION, PHASE 2

BEING A SUBDIVISION OF A PORTION OF SECTION 23, TOWNSHIP 26 SOUTH, RANGE 20 EAST
PASCO COUNTY, FLORIDA

PLAT BOOK **63** PAGE **107**



| LINE | BEARING | LENGTH |
|------|-------------|---------|
| L17 | S00°08'08"W | 35.00' |
| L23 | S89°51'48"E | 44.00' |
| L35 | N89°51'27"W | 30.00' |
| L36 | S00°08'33"W | 30.00' |
| L37 | N89°51'27"W | 30.00' |
| L38 | N00°08'33"E | 30.00' |
| L39 | N00°08'33"E | 13.46' |
| L40 | N23°02'13"W | 3.80' |
| L42 | S03°10'20"E | 11.79' |
| L77 | N34°18'34"W | 11.69' |
| L78 | N37°11'36"W | 6.07' |
| L79 | N35°22'39"W | 50.24' |
| L80 | N59°48'29"W | 40.25' |
| L81 | N67°08'30"W | 52.13' |
| L89 | S55°22'40"E | 28.33' |
| L100 | N72°38'21"E | 37.41' |
| L101 | S81°38'08"E | 29.86' |
| L102 | N08°19'45"E | 37.92' |
| L103 | N03°40'14"W | 61.75' |
| L104 | N18°45'51"E | 29.08' |
| L105 | N43°03'41"W | 38.65' |
| L106 | N77°04'19"E | 22.80' |
| L118 | N08°01'40"E | 150.85' |
| L119 | N51°01'41"W | 44.52' |
| L120 | N66°05'32"W | 58.18' |
| L121 | N61°53'44"W | 87.72' |
| L122 | N59°28'18"W | 45.72' |
| L123 | N03°33'37"E | 15.40' |
| L124 | N78°04'36"W | 54.88' |
| L125 | N12°40'51"W | 61.20' |
| L126 | N03°58'16"E | 74.01' |
| L127 | N11°46'21"E | 76.04' |
| L128 | N09°36'24"E | 48.38' |
| L129 | N32°57'54"W | 58.61' |
| L130 | N49°56'13"W | 30.67' |
| L171 | S55°22'40"E | 42.99' |
| L172 | N72°38'21"E | 41.30' |
| L173 | S81°38'08"E | 41.44' |
| L174 | N08°19'45"E | 54.51' |
| L175 | N03°40'14"W | 60.35' |
| L176 | N18°45'51"E | 33.45' |
| L177 | N33°25'20"W | 34.07' |
| L178 | N70°51'04"E | 40.43' |
| L179 | N82°10'10"E | 37.65' |
| L186 | N23°02'13"W | 11.44' |
| L187 | N40°17'41"W | 60.31' |
| L188 | N59°48'29"W | 43.79' |
| L189 | N67°08'30"W | 49.87' |
| L203 | S36°15'47"E | 28.88' |
| L206 | S76°23'42"W | 18.23' |
| L207 | S66°14'38"W | 54.78' |
| L208 | S76°23'42"W | 73.85' |
| L216 | S10°28'24"W | 16.25' |
| L217 | S49°20'26"E | 5.00' |

| CURVE | RADIUS | LENGTH | TANGENT | DELTA | CHORD BEARING | CHORD |
|-------|---------|---------|---------|------------|---------------|---------|
| C43 | 280.00' | 262.12' | 141.55' | 53°38'12" | N26°57'39"E | 252.65' |
| C44 | 280.00' | 390.05' | 234.18' | 79°48'58" | S13°52'16"W | 359.27' |
| C71 | 25.00' | 39.27' | 25.00' | 89°59'39" | N45°08'22"E | 35.35' |
| C72 | 60.00' | 264.46' | 81.77' | 252°32'33" | S36°08'04"E | 96.75' |
| C73 | 40.00' | 50.64' | 28.35' | 72°32'33" | S53°51'55"W | 47.13' |
| C74 | 25.00' | 39.27' | 25.00' | 90°00'21" | N44°51'38"W | 35.35' |
| C75 | 250.00' | 234.03' | 126.38' | 53°38'12" | N26°57'39"E | 225.58' |
| C76 | 310.00' | 352.23' | 197.87' | 65°06'02" | S21°13'44"W | 333.58' |
| C82 | 310.00' | 280.20' | 156.72' | 53°38'12" | N26°57'39"E | 279.72' |
| C139 | 60.00' | 57.69' | 31.29' | 55°05'29" | S01°30'53"W | 55.49' |
| C143 | 250.00' | 162.26' | 84.10' | 37°11'13" | N18°44'09"E | 159.43' |
| C144 | 250.00' | 68.91' | 34.68' | 15°47'35" | N45°13'33"E | 68.69' |
| C145 | 250.00' | 2.87' | 1.43' | 0°39'24" | N53°27'03"E | 2.87' |
| C146 | 310.00' | 65.00' | 27.87' | 10°09'53" | N34°14'18"E | 54.92' |
| C147 | 310.00' | 54.99' | 27.57' | 10°09'52" | N24°04'26"E | 54.92' |
| C148 | 310.00' | 54.99' | 27.57' | 10°09'51" | N13°54'34"E | 54.92' |
| C149 | 310.00' | 46.99' | 23.54' | 8°41'06" | N04°29'06"E | 46.95' |
| C150 | 440.00' | 234.17' | 119.93' | 30°29'36" | N24°04'27"E | 231.42' |
| C151 | 440.00' | 78.06' | 39.13' | 10°09'53" | N34°14'18"E | 77.96' |
| C152 | 440.00' | 78.06' | 39.13' | 10°09'52" | N24°04'26"E | 77.95' |
| C153 | 440.00' | 78.06' | 39.13' | 10°09'51" | N13°54'34"E | 77.95' |
| C180 | 60.00' | 57.69' | 31.29' | 55°05'29" | S53°54'36"E | 55.49' |
| C181 | 60.00' | 59.12' | 32.21' | 56°27'27" | N70°38'56"E | 56.76' |
| C182 | 60.00' | 26.00' | 13.21' | 24°48'33" | N30°00'26"E | 25.79' |
| C185 | 310.00' | 72.00' | 36.16' | 13°18'26" | N45°58'28"E | 71.84' |
| C186 | 310.00' | 6.23' | 3.11' | 1°09'04" | N53°12'13"E | 6.23' |
| C187 | 250.00' | 11.26' | 5.63' | 2°34'48" | S52°29'21"W | 11.26' |
| C188 | 250.00' | 93.60' | 47.35' | 21°27'04" | S40°28'25"W | 93.05' |
| C189 | 310.00' | 49.74' | 24.92' | 9°11'35" | S49°10'58"W | 49.69' |
| C198 | 250.00' | 125.89' | 64.31' | 28°51'10" | S39°21'10"W | 124.57' |
| C199 | 250.00' | 21.04' | 10.53' | 4°48'18" | S27°20'14"W | 21.03' |
| C199 | 310.00' | 21.25' | 10.63' | 3°55'36" | S42°37'22"W | 21.24' |
| C200 | 310.00' | 28.24' | 15.13' | 5°15'51" | S14°40'08"W | 27.70' |

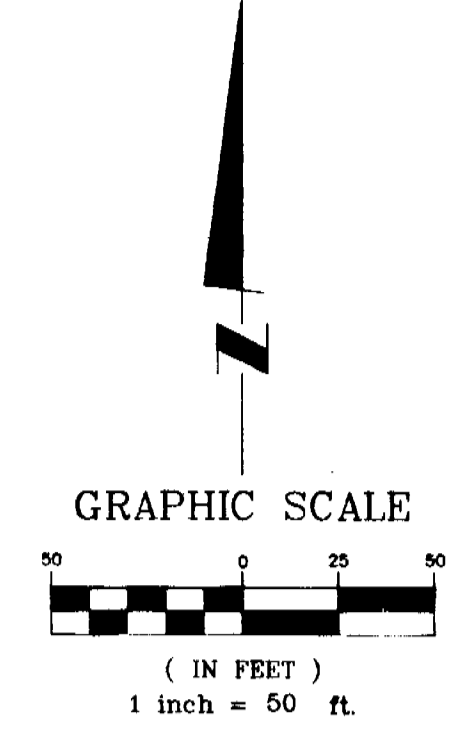
NOTE: SEE SHEET 2 OF 10 FOR KEYMAP, DETAILS AND LEGEND

EMK Consultants of Florida, Inc.
 engineers surveyors land planners
 7815 North Dale Mabry Highway, Suite 200 • Tampa, FL 33614 • 813.931.8900
 fax: 813.931.5848 • on the web: www.emkfla.com • e-mail: emk@emkfla.com
 LB No. 4636

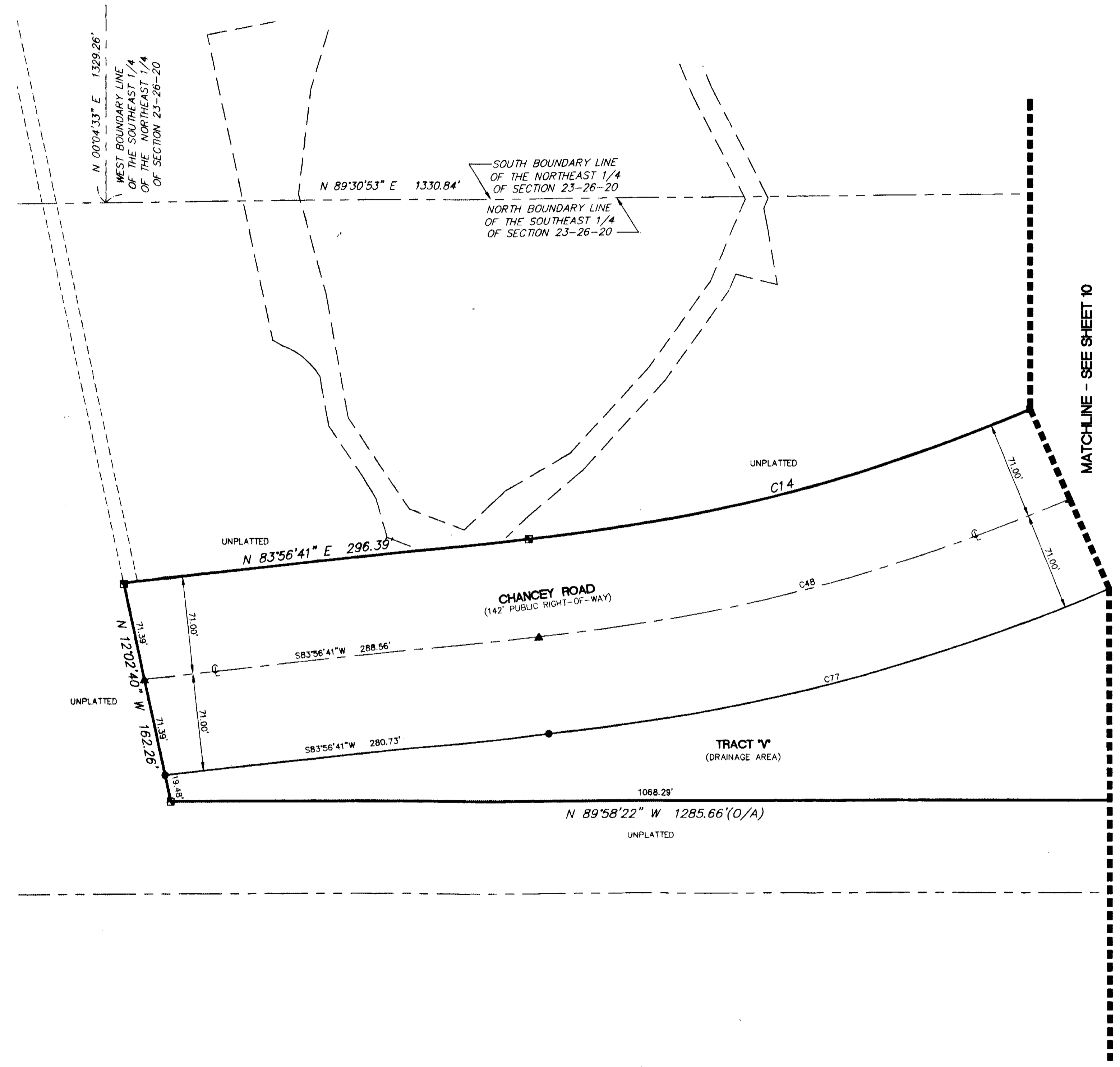
ASHTON OAKS SUBDIVISION, PHASE 2

BEING A SUBDIVISION OF A PORTION OF SECTION 23, TOWNSHIP 26 SOUTH, RANGE 20 EAST
PASCO COUNTY, FLORIDA

PLAT BOOK **63** PAGE **108**



| CURVE TABLE | | | | | | |
|-------------|----------|---------|---------|-----------|---------------|---------|
| CURVE | RADIUS | LENGTH | TANGENT | DELTA | CHORD BEARING | CHORD |
| C14 | 1209.00' | 377.78' | 190.44' | 17°54'13" | N75°37'18"E | 376.25' |
| C48 | 1280.00' | 400.00' | 201.64' | 17°54'18" | N75°36'12"E | 398.37' |
| C77 | 1351.00' | 422.22' | 212.84' | 17°54'22" | N75°35'11"E | 420.50' |



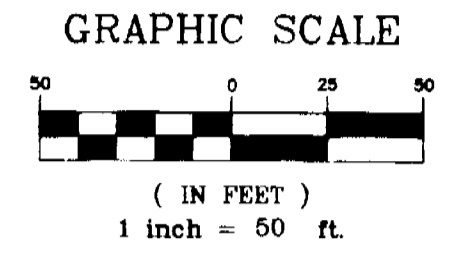
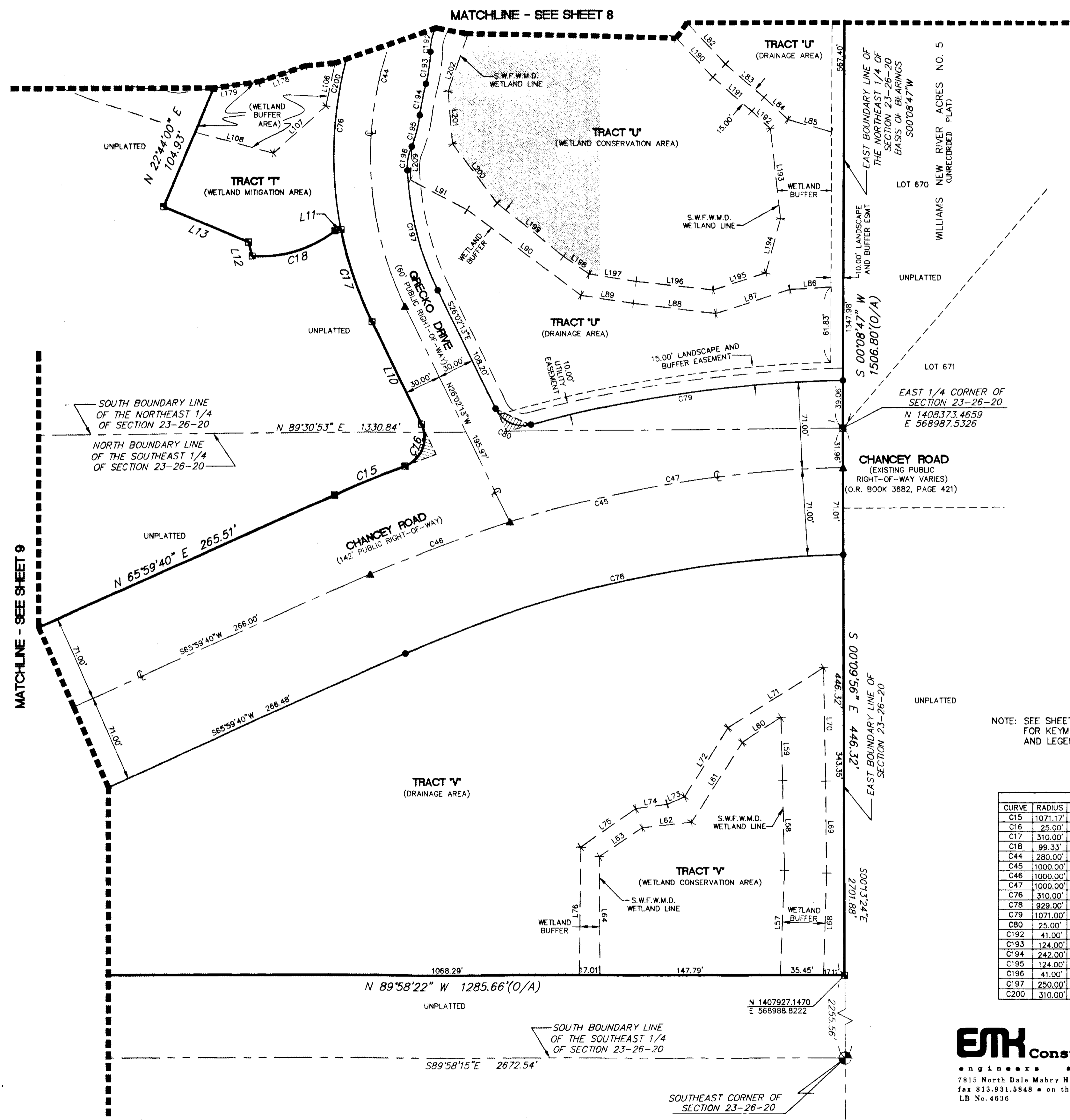
NOTE: SEE SHEET 2 OF 10
FOR KEYMAP, DETAILS
AND LEGEND

EMK Consultants of Florida, Inc.
engineers surveyors land planners
7815 North Dale Mabry Highway, Suite 200 • Tampa, FL 33614 • 813.931.8900
fax 813.931.6848 • on the web: www.emkfla.com • e-mail: emk@emkfla.com
LB No. 4636

ASHTON OAKS SUBDIVISION, PHASE 2

BEING A SUBDIVISION OF A PORTION OF SECTION 23, TOWNSHIP 26 SOUTH, RANGE 20 EAST
PASCO COUNTY, FLORIDA

PLAT BOOK **63** PAGE **109**



LINE TABLE

| LINE | BEARING | LENGTH |
|------|-------------|---------|
| L10 | N26°02'13"W | 92.45' |
| L11 | S78°46'00"W | 5.00' |
| L12 | N15°26'15"W | 11.69' |
| L13 | N67°15'34"W | 75.22' |
| L57 | S02°15'49"W | 85.83' |
| L58 | S01°14'32"E | 73.63' |
| L59 | S01°27'39"E | 50.56' |
| L60 | N58°15'12"E | 37.08' |
| L61 | N32°42'28"E | 77.02' |
| L62 | N83°13'54"E | 40.57' |
| L63 | N56°07'06"E | 42.57' |
| L64 | N00°16'52"W | 97.02' |
| L68 | S01°42'13"W | 83.55' |
| L69 | S00°35'17"E | 75.39' |
| L70 | S01°05'24"E | 91.51' |
| L71 | N58°09'44"E | 92.14' |
| L72 | N32°43'27"E | 65.84' |
| L73 | N67°23'50"E | 15.27' |
| L74 | N82°00'08"E | 26.15' |
| L75 | N54°26'57"E | 55.43' |
| L76 | N00°41'34"E | 104.57' |
| L82 | N42°52'10"W | 46.46' |
| L83 | N48°50'06"W | 41.91' |
| L84 | N47°32'59"W | 26.41' |
| L85 | N74°21'53"W | 37.32' |
| L86 | N86°19'01"E | 33.91' |
| L87 | N72°21'08"E | 63.57' |
| L88 | S82°59'16"E | 68.00' |
| L89 | S81°59'35"E | 43.67' |
| L90 | S52°46'12"E | 116.96' |
| L91 | S62°38'21"E | 52.57' |
| L106 | N11°58'57"E | 35.92' |
| L107 | N47°54'42"E | 58.04' |
| L108 | S74°33'54"E | 66.48' |
| L178 | N70°51'04"E | 40.43' |
| L179 | N82°10'10"E | 37.65' |
| L190 | N42°52'10"W | 44.02' |
| L191 | N48°50'06"W | 42.52' |
| L192 | N47°32'59"W | 20.61' |
| L193 | N05°26'54"W | 74.66' |
| L194 | N15°06'48"E | 46.01' |
| L195 | N72°12'12"E | 45.07' |
| L196 | S83°47'19"E | 63.59' |
| L197 | S81°24'55"E | 39.16' |
| L198 | S55°05'14"E | 25.70' |
| L199 | S51°15'33"E | 69.51' |
| L200 | S36°58'08"E | 61.15' |
| L201 | S04°49'31"E | 43.38' |
| L202 | S19°06'34"W | 50.14' |
| L209 | S02°18'45"W | 27.31' |

NOTE: SEE SHEET 2 OF 10 FOR KEYMAP, DETAILS AND LEGEND

CURVE TABLE

| CURVE | RADIUS | LENGTH | TANGENT | DELTA | CHORD BEARING | CHORD |
|-------|----------|---------|---------|------------|---------------|---------|
| C15 | 1071.17' | 62.21' | 31.11' | 37°39' | N67°32'07"E | 62.20' |
| C16 | 25.00' | 41.63' | 27.48' | 95°25'11" | N21°40'23"E | 36.99' |
| C17 | 310.00' | 79.62' | 40.03' | 144°22'56" | N18°40'45"W | 79.40' |
| C18 | 99.33' | 72.49' | 37.94' | 41°48'51" | S73°19'25"W | 70.89' |
| C44 | 280.00' | 390.05' | 234.18' | 79°48'58" | S13°52'18"W | 359.27' |
| C45 | 1000.00' | 369.96' | 202.69' | 22°54'58" | S77°19'30"W | 387.30' |
| C46 | 1000.00' | 277.46' | 139.63' | 15°53'50" | S80°50'04"W | 276.57' |
| C47 | 310.00' | 352.23' | 197.87' | 65°06'02" | S21°13'44"W | 333.58' |
| C78 | 929.00' | 370.34' | 187.66' | 22°50'26" | S77°16'57"W | 367.89' |
| C79 | 1071.00' | 248.87' | 130.07' | 13°50'57" | S81°56'23"W | 258.24' |
| C80 | 25.00' | 34.45' | 20.59' | 78°56'53" | S85°30'39"E | 31.79' |
| C192 | 41.00' | 20.16' | 10.29' | 281°0'36" | S120°20'11"W | 19.96' |
| C193 | 124.00' | 28.70' | 13.40' | 122°01'4" | N08°01'11"E | 28.65' |
| C194 | 242.00' | 26.16' | 13.09' | 67°11'34" | S11°07'01"W | 26.14' |
| C195 | 124.00' | 26.78' | 13.44' | 122°22'28" | N14°10'35"E | 26.73' |
| C196 | 41.00' | 20.16' | 10.29' | 281°0'36" | S101°0'52"W | 19.96' |
| C197 | 250.00' | 121.78' | 51.60' | 231°9'32" | S14°22'27"E | 101.08' |
| C200 | 310.00' | 231.24' | 151.13' | 51°58'51" | S14°40'08"W | 271.70' |

EMK Consultants of Florida, Inc.
engineers surveyors land planners
7815 North Dale Mabry Highway, Suite 200 • Tampa, FL 33614 • 813-931-8900
fax 813-931-8848 • on the web: www.emkfla.com • e-mail: emk@emkfla.com
LB No. 4636