



# PARK MEADOWS PHASE 1

A SUBDIVISION OF LAND BEING A PORTION OF SECTION 29, TOWNSHIP 25 SOUTH, RANGE 20 EAST, PASCO COUNTY, FLORIDA

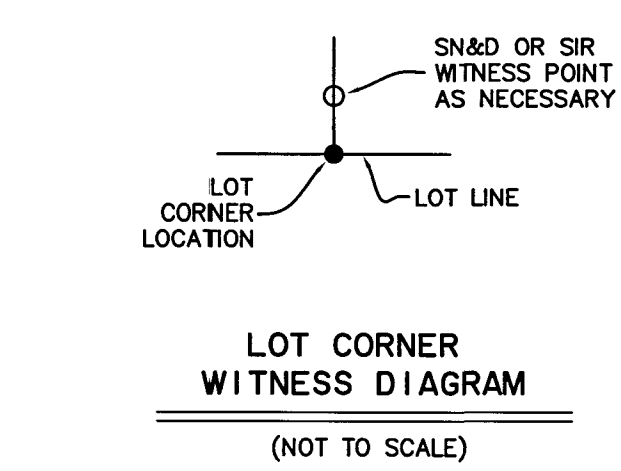
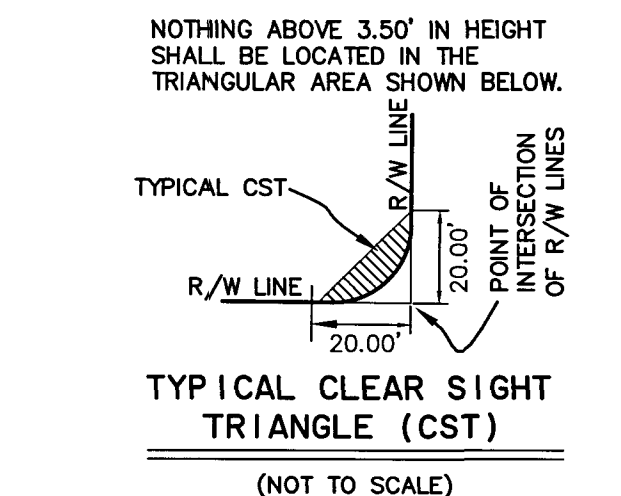
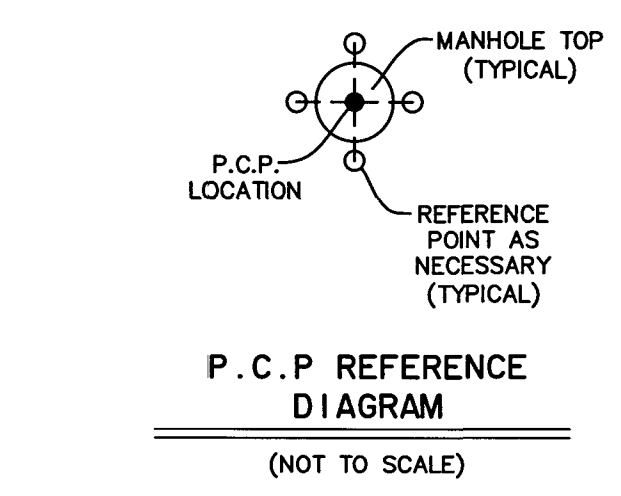
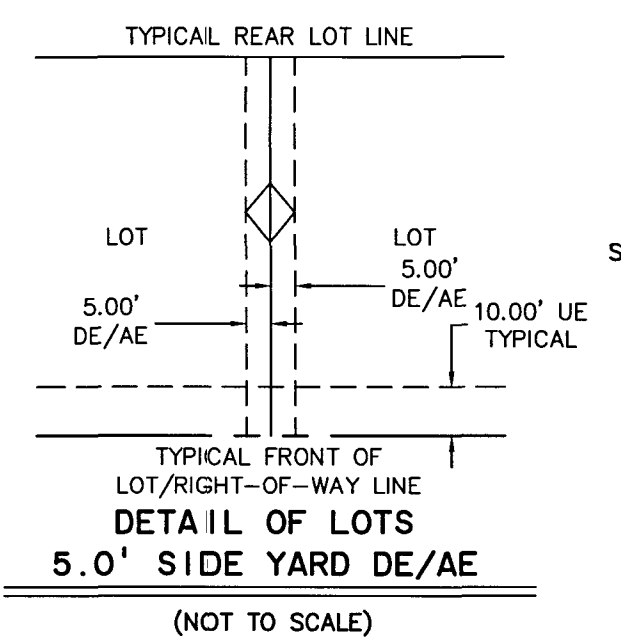
TRACT DESIGNATION TABLE	
TRACT	DESIGNATION
A	DRAINAGE, ACCESS AND UTILITY EASEMENT, WETLAND CONSERVATION AREA, WETLAND BUFFER AREA AND LANDSCAPE BUFFER
B	DRAINAGE, ACCESS AND UTILITY EASEMENT, AND LANDSCAPE BUFFER
C	DRAINAGE AND ACCESS EASEMENT
D	NEIGHBORHOOD PARK AND UTILITY EASEMENT
E	DRAINAGE, ACCESS AND UTILITY EASEMENT, WETLAND CONSERVATION AREA AND WETLAND BUFFER AREA
G	DRAINAGE AND ACCESS EASEMENT
S	LANDSCAPE AND SIGNAGE EASEMENT
LS-1	LIFT STATION AND UTILITY EASEMENT

**NOTES:**

- THE COORDINATE VALUES AND GRID BEARINGS SHOWN HEREON ARE BASED ON THE PASCO COUNTY PRIMARY HORIZONTAL CONTROL NETWORK (NAD 1983-2011 ADJUSTMENT) AND WERE ESTABLISHED TO THIRD-ORDER CLASS 1 ACCURACY AS DEFINED BY THE STANDARDS AND SPECIFICATIONS FOR GEODETIC CONTROL NETWORKS, AS PUBLISHED BY THE FEDERAL GEODETIC CONTROL COMMITTEE DATED SEPTEMBER 1984 OR LATEST EDITION. HORIZONTAL COORDINATES FOR THIS SURVEY (IN U.S. SURVEY FEET) ARE BASED ON THE NATIONAL GEODETIC SURVEY (NGS), STATE PLANE COORDINATES, FLORIDA WEST ZONE, NORTH AMERICAN DATUM 1983/2011 ADJUSTMENT. CONTROL MONUMENTS UTILIZED ARE: (a) FOUND ALUMINUM ALLOY ROD WITHOUT SLEEVE, STAMPED "N28-109 1991", DESIGNATED BY NGS AS "N28 109", PID = AL8063; AND (b) FOUND ALUMINUM ALLOY ROD WITHOUT SLEEVE, STAMPED "T30-121 1991", DESIGNATED BY NGS AS "T30 121", PID = AL8104. CONTROL MONUMENTS ARE AS PUBLISHED BY THE NATIONAL GEODETIC SURVEY WEB SITE AT [HTTP://WWW.NGS.NOAA.GOV](http://www.ngs.noaa.gov).
- ALL SIDE LOT LINES LABELED (NR) ARE NON-RADIAL TO THE FRONT AND/OR REAR LOT LINE. ALL OTHER LINES INTERSECTING LOT LINES ARE CONSIDERED RADIAL UNLESS NOTED (NR).
- NOTICE: THIS PLAT, AS RECORDED IN ITS GRAPHIC FORM, IS THE OFFICIAL DEPICTION OF THE SUBDIVIDED LANDS DESCRIBED HEREIN AND WILL IN NO CIRCUMSTANCES BE SUPPLANTED IN AUTHORITY BY ANY OTHER GRAPHIC OR DIGITAL FORM OF THE PLAT. THERE MAY BE ADDITIONAL RESTRICTIONS THAT ARE NOT RECORDED ON THIS PLAT THAT MAY BE FOUND IN THE PUBLIC RECORDS OF THIS COUNTY.
- ALL WETLAND JURISDICTIONAL LINES SHOWN ON MAP OF PLAT ARE THE MOST LANDWARD EXTENT OF EITHER ARMY CORPS OF ENGINEERS OR SOUTHWEST FLORIDA WATER MANAGEMENT DISTRICT JURISDICTIONAL LINES.
- NO PERMANENT PRIVATE STRUCTURES INCLUDING MASONRY OR CONCRETE BLOCK WALLS ARE TO BE LOCATED WITHIN UTILITY EASEMENTS ON RESIDENTIAL LOTS EXCEPT WHERE WALL EASEMENTS ARE SHOWN.
- ALL UTILITY EASEMENTS SHALL ALSO BE EASEMENTS FOR THE CONSTRUCTION, INSTALLATION, MAINTENANCE, AND OPERATION OF TELECOMMUNICATION SERVICES; PROVIDED, HOWEVER NO SUCH CONSTRUCTION, INSTALLATION, MAINTENANCE, AND OPERATION OF TELECOMMUNICATION SERVICES SHALL INTERFERE WITH THE FACILITIES AND SERVICES OF AN ELECTRIC, TELEPHONE, GAS, OR OTHER PUBLIC UTILITY. IN THE EVENT A TELECOMMUNICATION COMPANY DAMAGES THE FACILITIES OF A PUBLIC UTILITY, IT SHALL BE SOLELY RESPONSIBLE FOR THE DAMAGES.
- THIS PLAT CONTAINS EASEMENTS AND OTHER COMMON AREAS WHICH ARE NEITHER OWNED NOR MAINTAINED BY PASCO COUNTY.
- PERMANENT CONTROL POINTS SET BY FLORIDA DESIGN CONSULTANTS, INC. WILL BE A SET NAIL WITH DISC STAMPED PCP, LB 6707; LOT AND TRACT CORNERS SET BY FLORIDA DESIGN CONSULTANTS, INC. WILL BE A SET 5/8" IRON ROD WITH CAP STAMPED FDC LB 6707 (IN SOFT SURFACES) OR A SET NAIL WITH DISC STAMPED FDC LB 6707 (IN HARD SURFACES). WITNESS POINTS SET BY FLORIDA DESIGN CONSULTANTS, INC. WILL BE A SET 5/8" IRON ROD WITH CAP STAMPED FDC LB 6707 WITNESS (IN SOFT SURFACES) OR A SET NAIL WITH DISC STAMPED LB 6707 WITNESS (IN HARD SURFACES). MONUMENTS WILL BE SET AT EACH LOT CORNER, POINT OF INTERSECTION AND CHANGES OF DIRECTION OF LINES WITHIN THE SUBDIVISION AS REQUIRED BY CHAPTER 177 OF THE FLORIDA STATUTES 177.091(8), WITHIN THE TIME ALLOTTED.

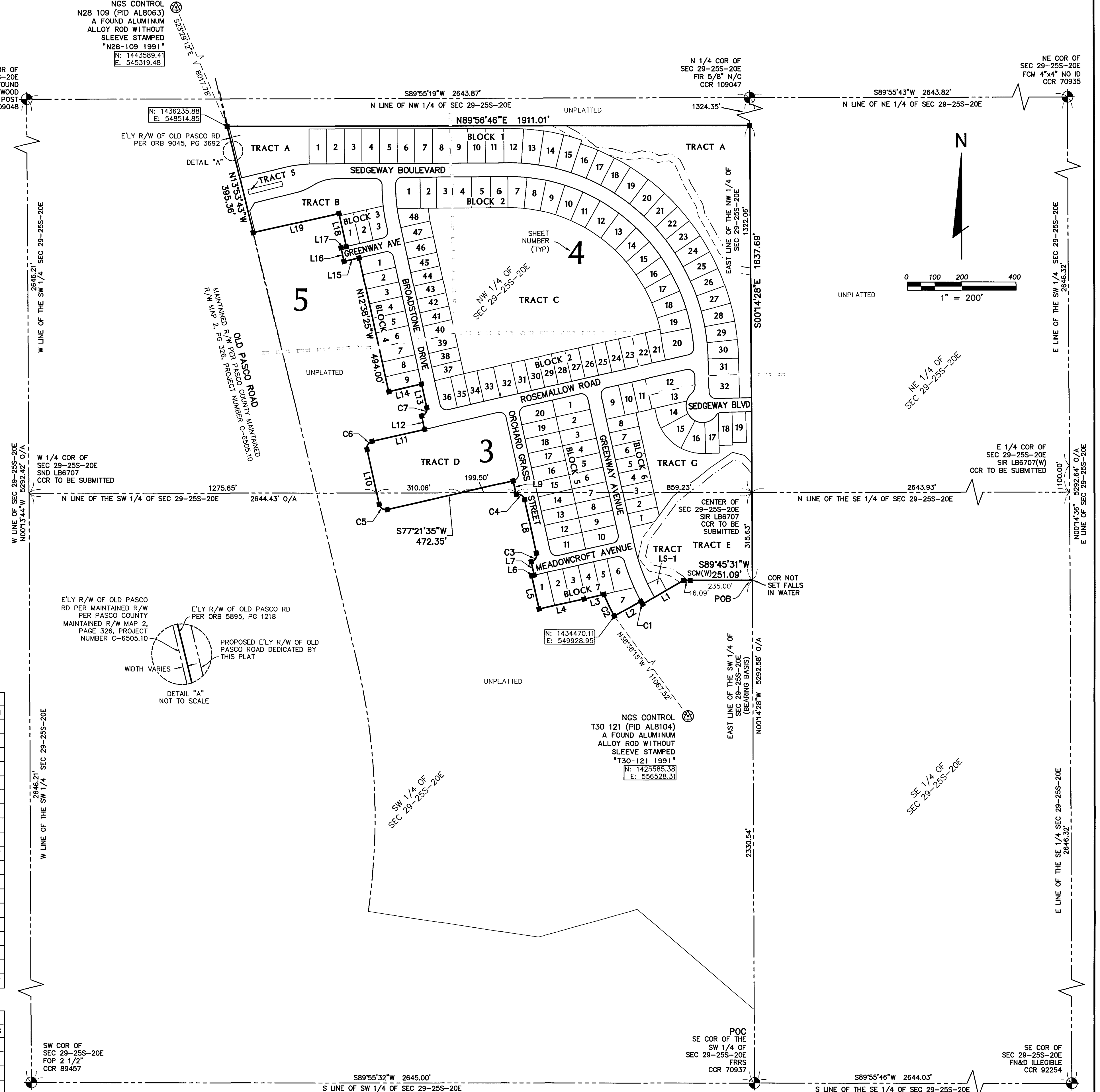
**LEGEND:**

- |  |  |
|--|--|
| ACOE = ARMY CORPS OF ENGINEERS   | SEC = SECTION  |
| AE = ACCESS EASEMENT   | S'LY = SOUTHERLY   |
| CCR = CERTIFIED CORNER RECORD  | SN&D = SET MAG NAIL AND DISK "LB 6707" UNLESS OTHERWISE NOTED  |
| COR = CORNER   | SFWFMD = SOUTHWEST FLORIDA MANAGEMENT DISTRICT   |
| DE = DRAINAGE EASEMENT   | TYP = TYPICAL  |
| DIA = DIAMETER   | UE = UTILITY EASEMENT  |
| E'LY = EASTERLY  | WBA = WETLAND BUFFER AREA  |
| ESMT = EASEMENT  | WLY = WESTERLY   |
| FDC = FLORIDA DESIGN CONSULTANTS   | WCA = WETLAND CONSERVATION AREA  |
| FM = FOUND 4"x4" CONCRETE MONUMENT   | WE = WALL EASEMENT   |
| FM = FOUND 4"x4" CONCRETE MONUMENT "PRM LB 6707" UNLESS OTHERWISE NOTED          | (W) = WITNESS  |
| FIR = FOUND IRON ROD   | □ = FOUND 4"x4" CONCRETE MONUMENT "PRM LB6707" (UNLESS OTHERWISE NOTED)                                    |
| FN&D = FOUND NAIL & DISK "LB 6707" (UNLESS OTHERWISE NOTED)                      | ● = PERMANENT CONTROL POINT (PCP) MONUMENT AS REQUIRED BY STATE STATUTE 177.091(8)(UNLESS OTHERWISE NOTED) |
| LB = LICENSED BUSINESS   | ⊕ = SECTION CORNER   |
| N/F = NOT FOUND  | ■ = SET 4"x4" CONCRETE MONUMENT "PRM LB6707" (UNLESS OTHERWISE NOTED)                                      |
| NGS = NATIONAL GEODETIC SURVEY   | ⊗ = NGS CONTROL POINT  |
| (NR) = NON-RADIAL  | ◇ = SEE 5.0' SIDE YARD DE/AE DETAIL  |
| N'LY = NORTHERLY   |  |
| NTS = NOT TO SCALE   |  |
| O/A = OVERALL  |  |
| ORB = OFFICIAL RECORDS BOOK  |  |
| PB = PLAT BOOK   |  |
| PID = NATIONAL GEODETIC SURVEY PERMANENT IDENTIFICATION NUMBER                   |  |
| POB = POINT OF BEGINNING   |  |
| POC = POINT OF COMMENCEMENT  |  |
| PLS = PROFESSIONAL LAND SURVEYOR   |  |
| PCP = PERMANENT CONTROL POINT (OR P.C.P.)  |  |
| PG(S) = PAGE(S)  |  |
| PRM = PERMANENT REFERENCE MONUMENT   |  |
| PT = POINT   |  |
| R/W = RIGHT-OF-WAY   |  |
| SCM = SET 4"x4" CONCRETE MONUMENT "PRM LB 6707" UNLESS OTHERWISE NOTED           |  |
| SCM = SET 4"x4" CONCRETE MONUMENT "FDC LB 6707 WIT COR" (UNLESS OTHERWISE NOTED) |  |
| (W) = WITNESS  |  |



LINE TABLE	
LINE	BEARING LENGTH
L1	S60°10'19"W 172.43'
L2	S61°07'38"W 111.00'
L3	S76°36'38"W 73.73'
L4	S77°41'26"W 166.88'
L5	N12°38'25"W 122.50'
L6	N77°21'35"E 9.66'
L7	N12°38'25"W 50.00'
L8	N12°38'25"W 198.00'
L9	N12°38'25"W 50.00'
L10	N12°38'25"W 203.00'
L11	N77°21'35"E 198.00'
L12	N12°38'25"W 50.00'
L13	N12°38'25"W 86.00'
L14	S77°21'35"W 124.00'
L15	S77°21'35"W 57.12'
L16	N12°38'25"W 50.00'
L17	N77°21'35"E 20.00'
L18	N12°38'25"W 122.00'
L19	S77°43'18"W 323.45'

CURVE TABLE						
CURVE	RADIUS	LENGTH	CHORD	BEARING	DELTA	RADIAL BEARING
C1	725.00'	12.09'	12.09'	N29°21'01"W	0°57'19"	N60°10'19"E
C2	836.00'	86.97'	86.93'	N25°53'33"W	5°57'38"	N61°07'38"E
C3	25.00'	39.27'	35.36'	N32°21'35"E	90°00'00"	N12°38'25"W
C4	25.00'	39.27'	35.36'	N57°38'25"W	90°00'00"	-
C5	25.00'	39.27'	35.36'	N57°38'25"W	90°00'00"	-
C6	25.00'	39.27'	35.36'	N32°21'35"E	90°00'00"	-
C7	25.00'	39.27'	35.36'	N32°21'35"E	90°00'00"	N12°38'25"W



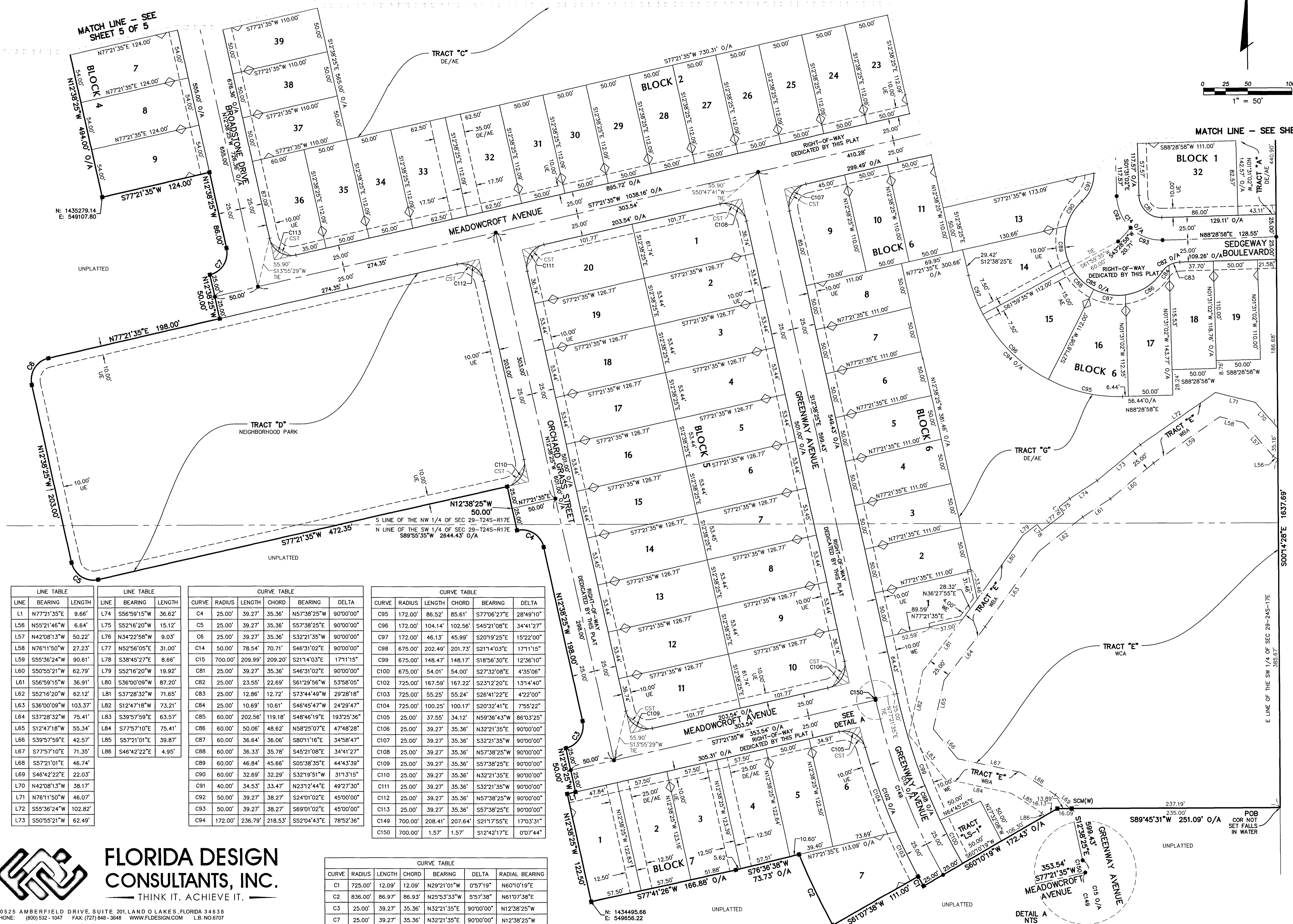
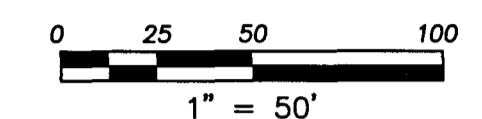
**FLORIDA DESIGN CONSULTANTS, INC.**  
— THINK IT. ACHIEVE IT. —

20525 AMBERFIELD DRIVE, SUITE 201, LAND O LAKES, FLORIDA 34638  
PHONE: (800) 532-1047 FAX: (727) 848-3848 WWW.FLDESIGN.COM L.B. NO. 6707  
MARCH 2019 - 2018-0032 (849)

# PARK MEADOWS PHASE 1

A SUBDIVISION OF LAND BEING A PORTION OF SECTION 29, TOWNSHIP 25 SOUTH, RANGE 20 EAST, PASCO COUNTY, FLORIDA

MATCH LINE - SEE SHEET 4 OF 5



LINE TABLE			LINE TABLE			CURVE TABLE					CURVE TABLE					CURVE TABLE					CURVE TABLE								
LINE	BEARING	LENGTH	LINE	BEARING	LENGTH	CURVE	RADIUS	LENGTH	CHORD	BEARING	DELTA	CURVE	RADIUS	LENGTH	CHORD	BEARING	DELTA	CURVE	RADIUS	LENGTH	CHORD	BEARING	DELTA	CURVE	RADIUS	LENGTH	CHORD	BEARING	DELTA
L1	N77°21'35"E	9.66'	L74	S56°59'15"W	36.62'	C4	25.00'	39.27'	35.36'	N57°38'25"W	90°00'00"	C95	172.00'	86.52'	85.61'	S77°06'27"E	28°49'10"	C100	675.00'	54.01'	54.00'	S27°32'08"E	4°35'06"	C105	25.00'	37.55'	34.12'	N59°36'43"W	86°03'25"
L56	N55°21'46"W	6.64'	L75	S52°16'20"W	15.12'	C5	25.00'	39.27'	35.36'	S57°38'25"E	90°00'00"	C96	172.00'	104.14'	102.56'	S45°21'08"E	34°41'27"	C101	675.00'	202.49'	201.73'	S21°14'03"E	17°11'15"	C106	25.00'	39.27'	35.36'	N32°21'35"E	90°00'00"
L57	N42°08'13"W	50.22'	L76	N34°22'58"W	9.03'	C6	25.00'	39.27'	35.36'	S32°21'35"W	90°00'00"	C97	172.00'	46.13'	45.99'	S20°19'25"E	15°22'00"	C102	725.00'	167.59'	167.22'	S23°12'20"E	13°14'40"	C107	25.00'	39.27'	35.36'	N32°21'35"E	90°00'00"
L58	N76°11'50"W	27.23'	L77	N52°56'05"E	31.00'	C14	50.00'	78.54'	70.71'	S46°31'02"E	90°00'00"	C98	675.00'	202.49'	201.73'	S21°14'03"E	17°11'15"	C103	725.00'	55.25'	55.24'	S26°41'22"E	4°22'00"	C108	25.00'	39.27'	35.36'	N57°38'25"W	90°00'00"
L59	S55°36'24"W	90.61'	L78	S38°45'27"E	8.66'	C15	700.00'	209.99'	209.20'	S21°14'03"E	17°11'15"	C99	675.00'	148.47'	148.17'	S18°56'30"E	12°36'10"	C104	725.00'	100.25'	100.17'	S20°32'41"E	7°55'22"	C109	25.00'	39.27'	35.36'	S57°38'25"E	90°00'00"
L60	S50°55'21"W	62.79'	L79	S52°16'20"W	19.92'	C81	25.00'	39.27'	35.36'	S46°31'02"E	90°00'00"	C100	675.00'	54.01'	54.00'	S27°32'08"E	4°35'06"	C105	25.00'	37.55'	34.12'	N59°36'43"W	86°03'25"	C110	25.00'	39.27'	35.36'	N32°21'35"E	90°00'00"
L61	S56°59'15"W	36.91'	L80	S36°00'09"W	87.20'	C82	25.00'	23.55'	22.69'	S61°29'56"W	53°58'05"	C101	725.00'	100.25'	100.17'	S20°32'41"E	7°55'22"	C106	25.00'	39.27'	35.36'	N32°21'35"E	90°00'00"	C111	25.00'	39.27'	35.36'	S32°21'35"W	90°00'00"
L62	S52°16'20"W	62.12'	L81	S37°28'32"W	71.65'	C83	25.00'	12.86'	12.72'	S73°44'49"W	29°28'18"	C102	725.00'	167.59'	167.22'	S23°12'20"E	13°14'40"	C107	25.00'	39.27'	35.36'	N32°21'35"E	90°00'00"	C112	25.00'	39.27'	35.36'	N57°38'25"W	90°00'00"
L63	S36°00'09"W	103.37'	L82	S12°47'18"W	73.21'	C84	25.00'	10.69'	10.61'	S46°45'47"W	24°29'47"	C103	725.00'	55.25'	55.24'	S26°41'22"E	4°22'00"	C108	25.00'	39.27'	35.36'	N57°38'25"W	90°00'00"	C113	25.00'	39.27'	35.36'	S57°38'25"E	90°00'00"
L64	S37°28'32"W	75.41'	L83	S39°57'59"E	63.57'	C85	60.00'	202.56'	119.18'	S48°46'19"E	193°25'36"	C104	725.00'	100.25'	100.17'	S20°32'41"E	7°55'22"	C109	25.00'	39.27'	35.36'	S57°38'25"E	90°00'00"	C114	25.00'	39.27'	35.36'	N57°38'25"W	90°00'00"
L65	S12°47'18"W	55.34'	L84	S77°57'10"E	75.41'	C86	60.00'	50.06'	48.62'	N58°25'07"E	47°48'28"	C105	25.00'	37.55'	34.12'	N59°36'43"W	86°03'25"	C110	25.00'	39.27'	35.36'	N32°21'35"E	90°00'00"	C115	25.00'	39.27'	35.36'	S57°38'25"E	90°00'00"
L66	S39°57'59"E	42.57'	L85	S57°21'01"E	39.87'	C87	60.00'	36.64'	36.06'	S80°11'16"E	34°58'47"	C106	25.00'	39.27'	35.36'	N32°21'35"E	90°00'00"	C111	25.00'	39.27'	35.36'	S32°21'35"W	90°00'00"	C116	25.00'	39.27'	35.36'	N57°38'25"W	90°00'00"
L67	S77°57'10"E	71.35'	L86	S46°42'22"E	4.95'	C88	60.00'	36.33'	35.78'	S45°21'08"E	34°41'27"	C107	25.00'	39.27'	35.36'	N32°21'35"E	90°00'00"	C112	25.00'	39.27'	35.36'	N57°38'25"W	90°00'00"	C117	25.00'	39.27'	35.36'	S57°38'25"E	90°00'00"
L68	S57°21'01"E	46.74'				C89	60.00'	46.84'	45.66'	S05°38'35"E	44°43'39"	C108	25.00'	39.27'	35.36'	N57°38'25"W	90°00'00"	C113	25.00'	39.27'	35.36'	S57°38'25"E	90°00'00"	C118	25.00'	39.27'	35.36'	N57°38'25"W	90°00'00"
L69	S46°42'22"E	22.03'				C90	60.00'	32.69'	32.29'	S32°19'51"W	31°13'15"	C109	25.00'	39.27'	35.36'	S57°38'25"E	90°00'00"	C114	25.00'	39.27'	35.36'	N57°38'25"W	90°00'00"	C119	700.00'	208.41'	207.64'	S21°17'55"E	17°03'31"
L70	N42°08'13"W	38.17'				C91	40.00'	34.53'	33.47'	N23°12'44"E	49°27'30"	C110	25.00'	39.27'	35.36'	N32°21'35"E	90°00'00"	C115	25.00'	39.27'	35.36'	S57°38'25"E	90°00'00"	C120	700.00'	1.57'	1.57'	S12°42'17"E	0°07'44"
L71	N76°11'50"W	46.07'				C92	50.00'	39.27'	38.27'	S24°01'02"E	45°00'00"	C111	25.00'	39.27'	35.36'	S32°21'35"W	90°00'00"	C116	25.00'	39.27'	35.36'	N57°38'25"W	90°00'00"						
L72	S55°36'24"W	102.82'				C93	50.00'	39.27'	38.27'	S69°01'02"E	45°00'00"	C112	25.00'	39.27'	35.36'	N57°38'25"W	90°00'00"	C117	25.00'	39.27'	35.36'	S57°38'25"E	90°00'00"						
L73	S50°55'21"W	62.49'				C94	172.00'	236.79'	218.53'	S52°04'43"E	78°52'36"	C113	25.00'	39.27'	35.36'	N57°38'25"W	90°00'00"	C118	25.00'	39.27'	35.36'	S57°38'25"E	90°00'00"						

**FLORIDA DESIGN CONSULTANTS, INC.**  
— THINK IT. ACHIEVE IT. —  
20525 AMBERFIELD DRIVE, SUITE 201, LAND O LAKES, FLORIDA 34638  
PHONE: (800) 532-1047 FAX: (727) 848-3648 WWW.FLDESIGN.COM LB. NO. 6707  
MARCH 2019 - 2018-0032 (849)

CURVE TABLE						
CURVE	RADIUS	LENGTH	CHORD	BEARING	DELTA	RADIAL BEARING
C1	725.00'	12.09'	12.09'	N29°21'01"W	0°57'19"	N60°10'19"E
C2	836.00'	86.97'	86.93'	N25°53'33"W	5°57'38"	N61°07'38"E
C3	25.00'	39.27'	35.36'	N32°21'35"E	90°00'00"	N12°38'25"W
C7	25.00'	39.27'	35.36'	N32°21'35"E	90°00'00"	N12°38'25"W

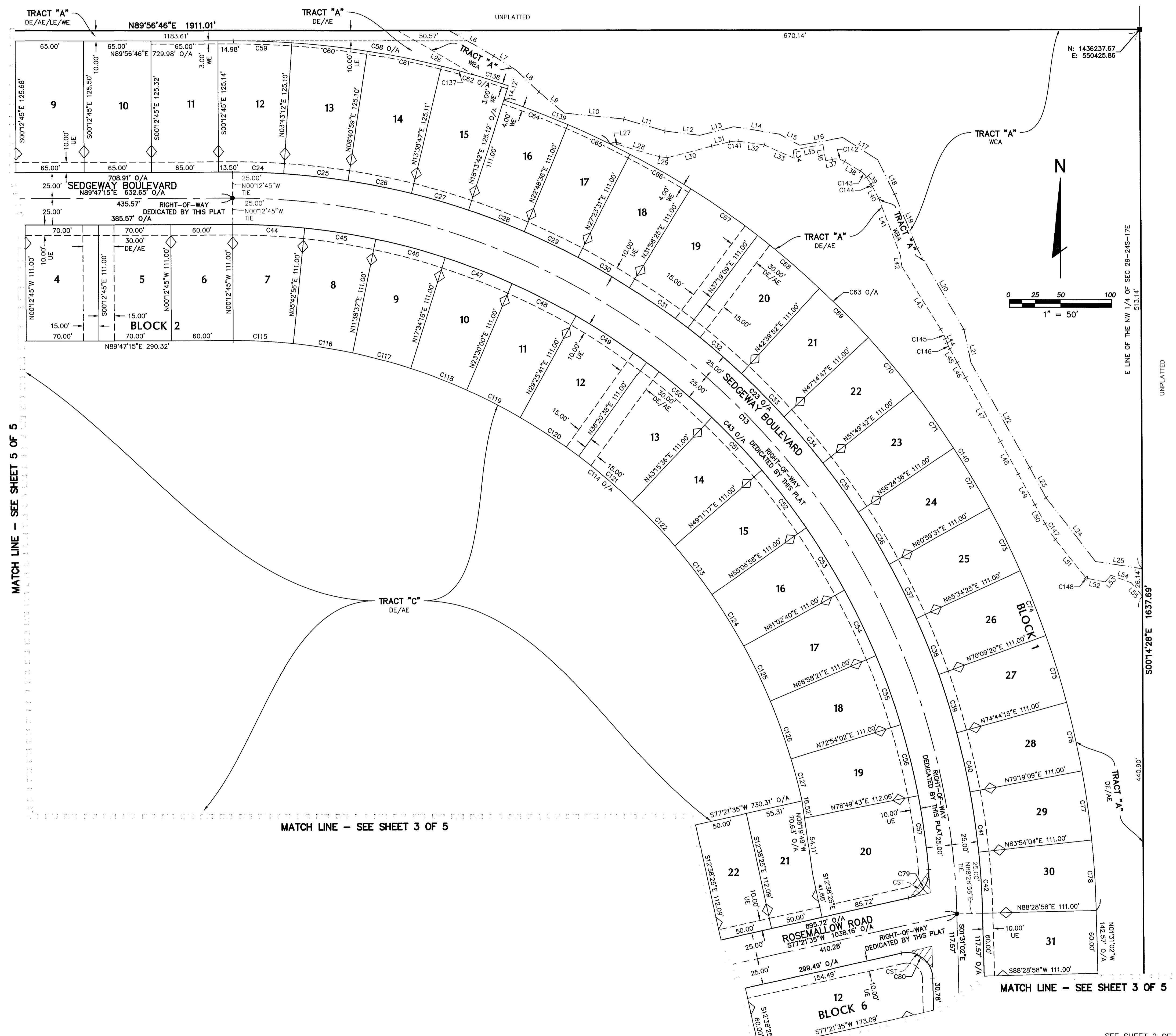
# PARK MEADOWS PHASE 1

A SUBDIVISION OF LAND BEING A PORTION OF SECTION 29, TOWNSHIP 25 SOUTH, RANGE 20 EAST, PASCO COUNTY, FLORIDA

CURVE	RADIUS	LENGTH	CHORD	BEARING	DELTA
C13	700.00'	1083.62'	978.62'	N45°51'53"W	88°41'43"
C23	725.00'	1122.32'	1013.57'	N45°51'53"W	88°41'43"
C24	725.00'	49.78'	49.75'	N88°14'47"W	3°55'59"
C25	725.00'	62.80'	62.78'	N83°47'54"W	4°57'48"
C26	725.00'	62.80'	62.78'	N78°50'07"W	4°57'48"
C27	725.00'	57.98'	57.96'	N74°03'46"W	4°34'55"
C28	725.00'	57.98'	57.96'	N69°28'51"W	4°34'55"
C29	725.00'	57.98'	57.96'	N64°53'56"W	4°34'55"
C30	725.00'	57.98'	57.96'	N60°19'02"W	4°34'55"
C31	725.00'	67.65'	67.61'	N55°21'13"W	5°20'47"
C32	725.00'	67.65'	67.61'	N50°00'29"W	5°20'47"
C33	725.00'	57.98'	57.96'	N45°02'40"W	4°34'55"
C34	725.00'	57.98'	57.96'	N40°27'46"W	4°34'55"
C35	725.00'	57.98'	57.96'	N35°52'51"W	4°34'55"
C36	725.00'	57.98'	57.96'	N31°17'56"W	4°34'55"
C37	725.00'	57.98'	57.96'	N26°43'02"W	4°34'55"
C38	725.00'	57.98'	57.96'	N22°08'07"W	4°34'55"
C39	725.00'	57.98'	57.96'	N17°33'13"W	4°34'55"
C40	725.00'	57.98'	57.96'	N12°58'18"W	4°34'55"
C41	725.00'	57.98'	57.96'	N08°23'24"W	4°34'55"
C42	725.00'	57.98'	57.96'	N03°48'29"W	4°34'55"
C43	675.00'	1002.44'	912.83'	N47°40'03"W	85°05'24"
C44	675.00'	69.84'	69.81'	N87°14'54"W	5°55'41"
C45	675.00'	69.84'	69.81'	N81°19'13"W	5°55'41"
C46	675.00'	69.84'	69.81'	N75°23'32"W	5°55'41"
C47	675.00'	69.84'	69.81'	N69°27'51"W	5°55'41"
C48	675.00'	69.84'	69.81'	N63°32'10"W	5°55'41"
C49	675.00'	81.47'	81.43'	N57°06'50"W	6°54'57"
C50	675.00'	81.47'	81.43'	N50°11'53"W	6°54'58"
C51	675.00'	69.84'	69.81'	N43°46'33"W	5°55'41"
C52	675.00'	69.84'	69.81'	N37°50'52"W	5°55'41"
C53	675.00'	69.84'	69.81'	N31°55'11"W	5°55'41"
C54	675.00'	69.84'	69.81'	N25°59'30"W	5°55'41"
C55	675.00'	69.84'	69.81'	N20°03'49"W	5°55'41"
C56	675.00'	69.84'	69.81'	N14°08'08"W	5°55'41"
C57	675.00'	71.26'	71.23'	N08°08'49"W	6°02'56"
C58	850.51'	272.14'	270.98'	N80°56'48"W	18°19'58"
C59	850.51'	56.86'	56.86'	N88°11'50"W	3°49'53"
C60	850.51'	73.64'	73.62'	N83°48'04"W	4°57'39"
C61	850.51'	73.64'	73.62'	N78°50'25"W	4°57'39"
C62	850.51'	67.98'	67.96'	N74°04'12"W	4°34'47"
C63	836.00'	1025.08'	962.06'	N36°38'40"W	70°15'22"
C64	836.00'	66.85'	66.84'	N69°28'51"W	4°34'55"
C65	836.00'	66.85'	66.84'	N64°53'56"W	4°34'55"
C66	836.00'	66.85'	66.84'	N60°19'02"W	4°34'55"
C67	836.00'	78.00'	77.97'	N55°21'13"W	5°20'46"
C68	836.00'	78.00'	77.97'	N50°00'29"W	5°20'46"
C69	836.00'	66.85'	66.84'	N45°02'40"W	4°34'55"
C70	836.00'	66.85'	66.84'	N40°27'46"W	4°34'55"
C71	836.00'	66.85'	66.84'	N35°52'51"W	4°34'55"
C72	836.00'	66.85'	66.84'	N31°17'56"W	4°34'55"
C73	836.00'	66.85'	66.84'	N26°43'02"W	4°34'55"
C74	836.00'	66.85'	66.84'	N22°08'07"W	4°34'55"
C75	836.00'	66.85'	66.84'	N17°33'13"W	4°34'55"
C76	836.00'	66.85'	66.84'	N12°58'18"W	4°34'55"
C77	836.00'	66.85'	66.84'	N08°23'24"W	4°34'55"
C78	836.00'	66.85'	66.84'	N03°48'29"W	4°34'55"
C79	25.00'	35.99'	32.96'	N36°07'07"E	82°28'55"
C80	25.00'	44.12'	38.62'	N52°04'43"W	101°07'24"
C114	564.00'	761.54'	705.00'	N51°31'49"W	77°21'52"
C115	564.00'	58.35'	58.33'	N87°14'54"W	5°55'41"
C116	564.00'	58.35'	58.33'	N81°19'13"W	5°55'41"
C117	564.00'	58.35'	58.33'	N75°23'32"W	5°55'41"
C118	564.00'	58.35'	58.33'	N69°27'51"W	5°55'41"
C119	564.00'	58.35'	58.33'	N63°32'10"W	5°55'41"
C120	564.00'	68.08'	68.04'	N57°06'50"W	6°54'58"
C121	564.00'	68.08'	68.04'	N50°11'53"W	6°54'58"
C122	564.00'	58.35'	58.33'	N43°46'33"W	5°55'41"
C123	564.00'	58.35'	58.33'	N37°50'52"W	5°55'41"
C124	564.00'	58.35'	58.33'	N31°55'11"W	5°55'41"

CURVE	RADIUS	LENGTH	CHORD	BEARING	DELTA
C125	564.00'	58.35'	58.33'	N25°59'30"W	5°55'41"
C126	564.00'	58.35'	58.33'	N20°03'49"W	5°55'41"
C127	564.00'	41.85'	41.84'	N14°58'25"W	4°15'06"
C137	850.51'	33.46'	33.46'	N75°13'58"W	2°15'14"
C138	850.51'	34.52'	34.52'	N72°56'35"W	2°19'31"
C139	836.00'	111.47'	111.39'	N67°57'07"W	7°38'23"
C140	836.00'	913.61'	868.82'	N32°49'29"W	62°36'54"
C141	25.04'	8.20'	8.16'	S85°33'11"W	18°45'51"
C142	16.98'	12.51'	12.23'	N80°07'41"W	42°12'38"
C143	17.10'	8.35'	8.27'	N45°02'30"W	27°59'00"
C144	36.11'	2.78'	2.78'	N31°07'10"W	42°42'24"
C145	61.43'	10.22'	10.21'	N27°14'56"W	9°32'03"
C146	47.09'	6.37'	6.37'	S24°12'54"E	7°45'09"
C147	103.02'	17.97'	17.95'	S33°43'19"E	9°59'50"
C148	2.37'	1.89'	1.84'	S62°26'25"E	45°33'40"

LINE	BEARING	LENGTH
L6	N60°25'35"W	49.86'
L7	N58°29'27"W	26.10'
L8	N46°56'43"W	29.74'
L9	N51°07'31"W	32.09'
L10	N84°29'49"W	58.51'
L11	N73°31'43"W	40.55'
L12	N83°12'10"W	33.78'
L13	S75°48'27"W	33.71'
L14	N80°51'06"W	44.54'
L15	N61°39'48"W	22.31'
L16	S80°00'08"W	42.29'
L17	N57°53'13"W	39.98'
L18	N26°27'36"W	36.94'
L19	N22°47'47"W	55.96'
L20	N30°24'24"W	89.45'
L21	N12°20'15"W	32.41'
L22	N29°48'45"W	114.95'
L23	N28°32'46"W	32.67'
L24	N38°42'46"W	77.69'
L25	N81°29'01"W	46.31'
L26	N60°25'35"W	86.45'
L27	N84°29'49"W	9.40'
L28	N73°31'43"W	40.27'
L29	N83°12'10"W	7.42'
L30	S75°19'57"W	43.93'
L31	S76°22'50"W	17.82'
L32	N81°44'15"W	25.63'
L33	N66°24'04"W	31.64'
L34	S07°19'26"E	8.00'
L35	S79°43'22"W	29.17'
L36	N10°16'38"W	15.69'
L37	S78°46'00"W	6.34'
L38	N59°02'00"W	17.72'
L39	N33°19'22"W	7.89'
L40	N28°11'52"W	12.97'
L41	N21°05'40"W	58.32'
L42	N07°09'30"W	10.06'
L43	N32°02'17"W	71.04'
L44	N21°33'09"W	4.09'
L45	N29°14'58"W	14.79'
L46	N29°14'58"W	16.67'
L47	N29°14'58"W	69.10'
L48	N29°14'58"W	35.85'
L49	N28°43'27"W	33.52'
L50	N28°43'24"W	20.74'
L51	N39°39'35"W	46.50'
L52	N78°25'15"W	17.89'
L53	S41°38'31"W	8.58'
L54	N70°08'51"W	21.28'
L55	N40°18'35"W	16.51'



MATCH LINE - SEE SHEET 5 OF 5

MATCH LINE - SEE SHEET 3 OF 5

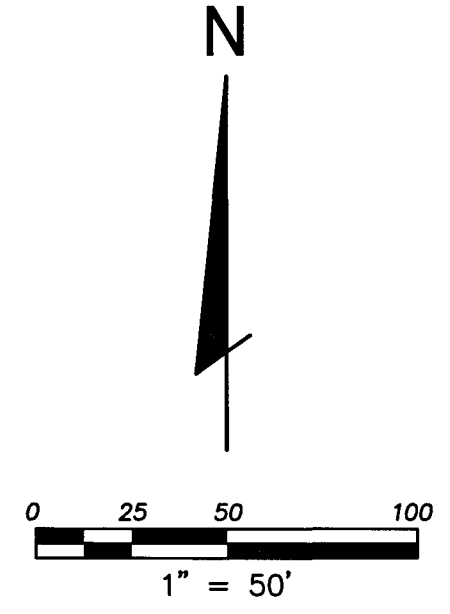
MATCH LINE - SEE SHEET 3 OF 5



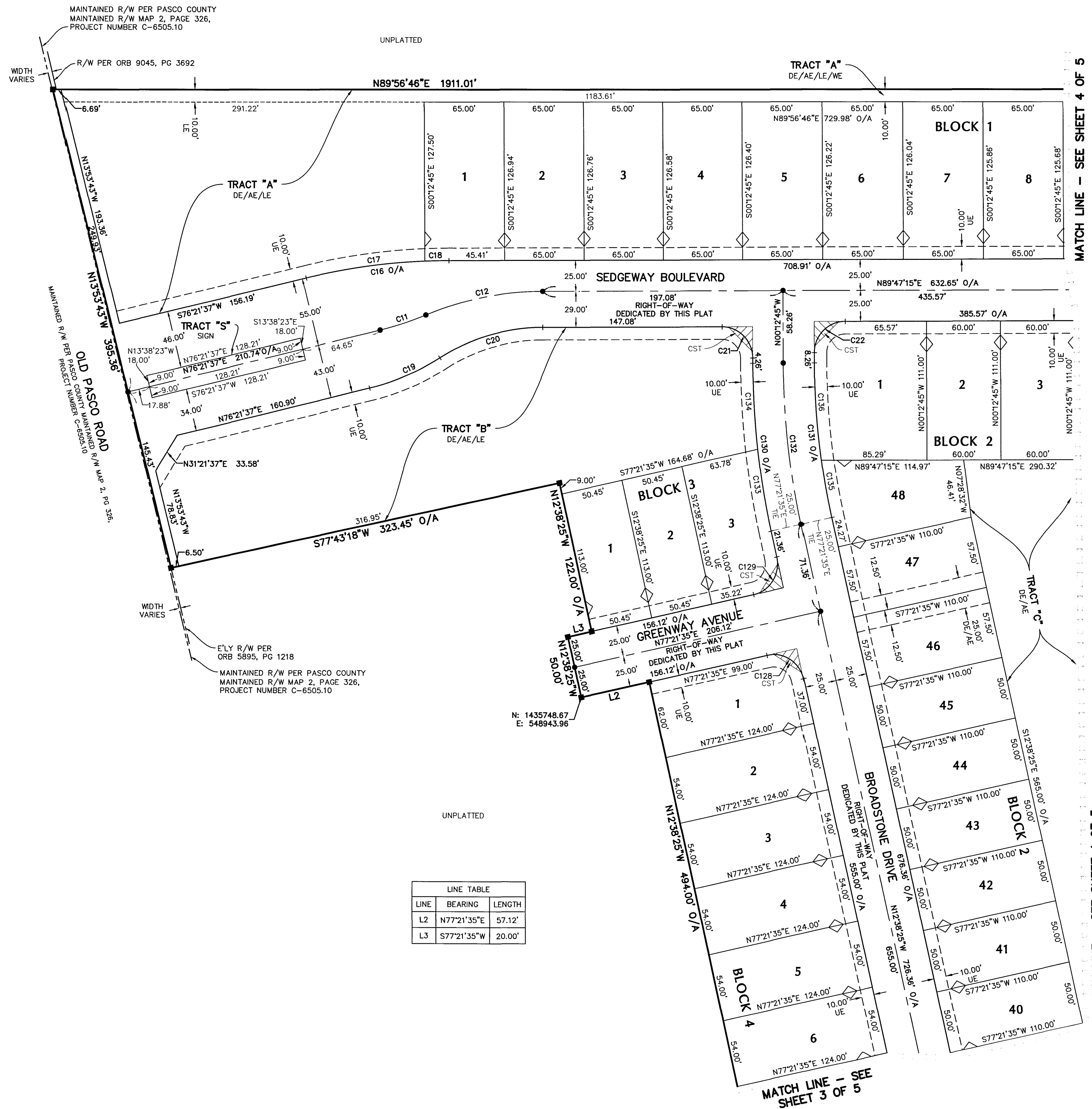
20525 AMBERFIELD DRIVE, SUITE 201, LAND O LAKES, FLORIDA 34638  
 PHONE: (800) 532-1047 FAX: (727) 948-3648 WWW.FLDESIGN.COM L.B. NO. 6707  
 MARCH 2019 - 2018-0032 (849)

# PARK MEADOWS PHASE 1

A SUBDIVISION OF LAND BEING A PORTION OF SECTION 29, TOWNSHIP 25 SOUTH, RANGE 20 EAST, PASCO COUNTY, FLORIDA



CURVE TABLE				
CURVE	RADIUS	LENGTH	CHORD	DELTA
C11	250.00'	39.22'	39.18'	N71°51'56"E 8°59'22"
C12	250.00'	97.81'	97.19'	S78°34'45"W 22°25'00"
C16	500.00'	117.17'	116.91'	S83°04'26"W 13°25'38"
C17	500.00'	97.58'	97.42'	S81°57'04"W 11°10'53"
C18	500.00'	19.59'	19.59'	S88°39'53"W 21°4'43"
C19	192.00'	62.57'	62.29'	N67°01'30"E 18°40'15"
C20	158.00'	88.51'	87.36'	S73°44'19"W 32°05'53"
C21	25.00'	39.27'	35.36'	N45°12'45"W 90°00'00"
C22	25.00'	39.27'	35.36'	S44°47'15"W 90°00'00"
C128	25.00'	39.27'	35.36'	N57°38'25"W 90°00'00"
C129	25.00'	39.27'	35.36'	N32°21'35"E 90°00'00"
C130	625.00'	135.57'	135.30'	S06°25'35"E 12°25'40"
C131	575.00'	124.72'	124.48'	S06°25'35"E 12°25'40"
C132	600.00'	130.14'	129.89'	S06°25'35"E 12°25'40"
C133	625.00'	66.77'	66.74'	S09°34'48"E 6°07'15"
C134	625.00'	68.80'	68.76'	S03°21'57"E 6°18'25"
C135	575.00'	46.74'	46.73'	S10°18'41"E 4°39'28"
C136	575.00'	77.98'	77.92'	S04°05'51"E 7°46'12"



LINE TABLE		
LINE	BEARING	LENGTH
L2	N77°21'35"E	57.12'
L3	S77°21'35"W	20.00'



**FLORIDA DESIGN CONSULTANTS, INC.**  
— THINK IT. ACHIEVE IT. —

20525 AMBERFIELD DRIVE, SUITE 201, LAND O LAKES, FLORIDA 34638  
PHONE: (800) 532-1047 FAX: (727) 848-3648 WWW.FLDESIGN.COM L.B. NO. 6707  
MARCH 2019 - 2018-0032 (849)

SEE SHEET 2 OF 5 FOR LEGEND  
**SHEET 5 OF 5**