

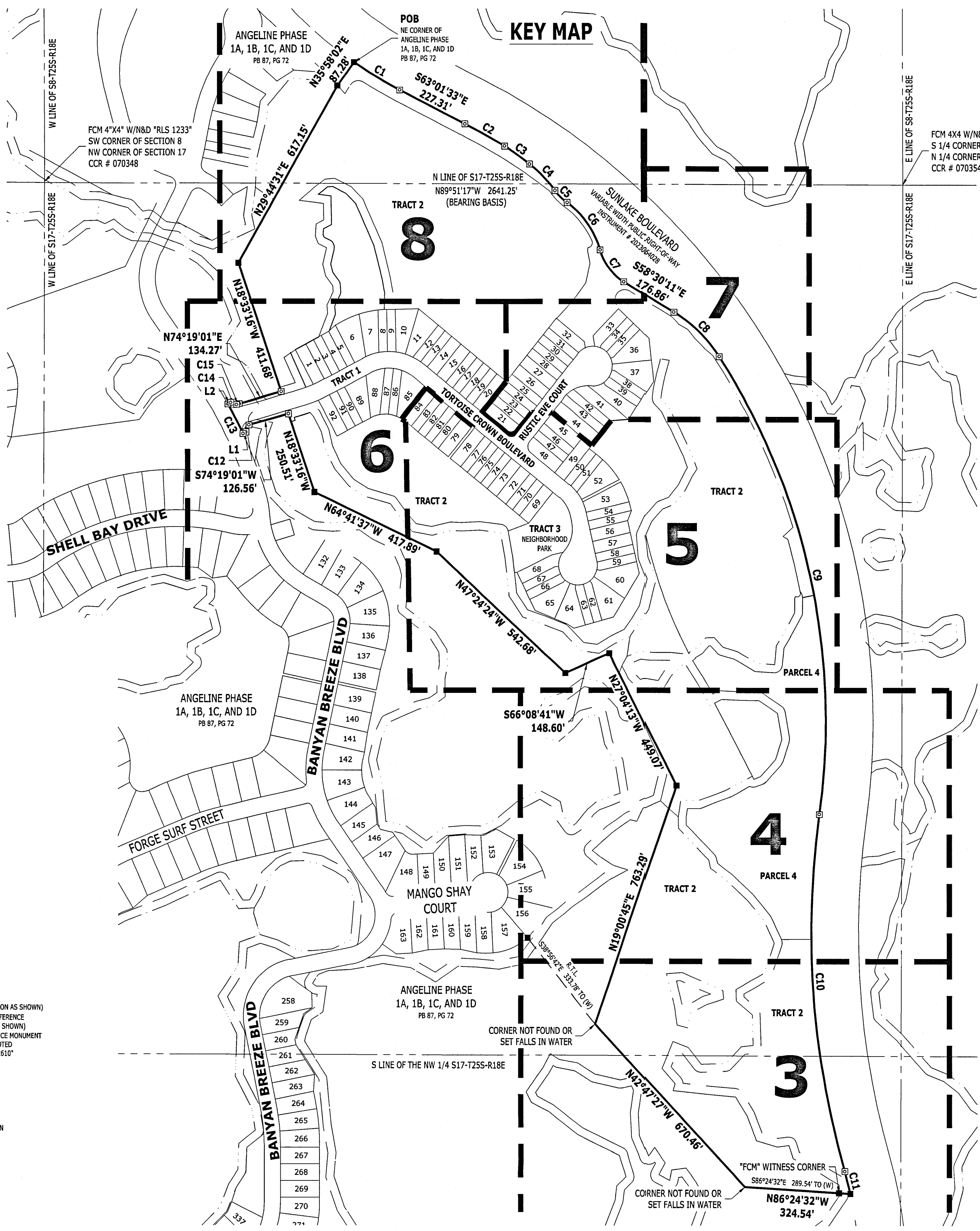
ANGELINE PHASE 1E

BEING A REPLAT OF A PORTION OF TRACTS 3 AND 21, ANGELINE PHASE 1A, 1B, 1C, AND 1D, PLAT BOOK 87, PAGE 72 OF THE PUBLIC RECORDS OF PASCO COUNTY, FLORIDA. TOGETHER WITH UNPLATTED LANDS LYING IN SECTION 8 AND 17, TOWNSHIP 25 SOUTH, RANGE 18 EAST, PASCO COUNTY, FLORIDA

PLAT NOTES:

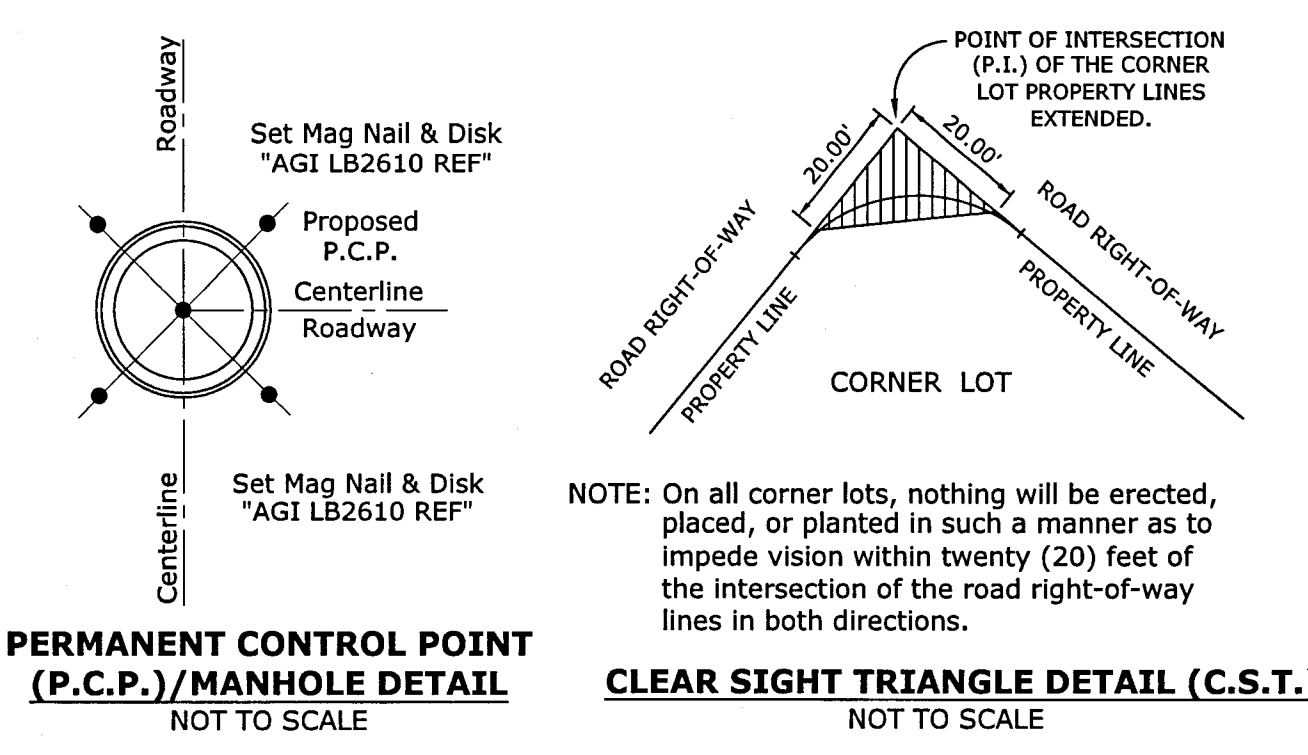
- SUBDIVISION PLATS BY NO MEANS REPRESENT A DETERMINATION ON WHETHER PROPERTIES WILL OR WILL NOT FLOOD. LAND WITHIN THE BOUNDARIES OF THIS PLAT MAY OR MAY NOT BE SUBJECT TO FLOODING; THE DEVELOPMENT SERVICES DIVISION HAS INFORMATION REGARDING FLOODING AND RESTRICTIONS ON DEVELOPMENT.
- DRAINAGE EASEMENTS SHALL NOT CONTAIN PERMANENT IMPROVEMENTS, INCLUDING BUT NOT LIMITED TO SIDEWALKS, DRIVEWAYS, IMPERVIOUS SURFACES, PATIOS, DECKS, POOLS, AIR CONDITIONERS, STRUCTURES, UTILITY SHEDS, POLES, FENCES, SPRINKLER SYSTEMS, TREES, SHRUBS, HEDGES, AND LANDSCAPING PLANTS OTHER THAN GRASS, EXCEPT FOR LANDSCAPING OF STORM WATER DETENTION AND RETENTION PONDS AS REQUIRED BY THE LAND DEVELOPMENT CODE. THIS NOTE SHALL APPEAR ON EACH AFFECTED DEED.
- BEARINGS SHOWN HEREON ARE BASED ON THE FLORIDA STATE PLANE COORDINATE SYSTEM, FLORIDA WEST ZONE, NAD 83 (2011) AND ARE DERIVED BY MULTIPLE REAL-TIME KINEMATIC GPS OBSERVATIONS. BEARINGS SHOWN HEREON ARE A MEANS TO REFERENCE THE SURVEYED PARCEL TO THE DEED OR PLAT OF RECORD. MORE SPECIFICALLY THE WEST LINE OF THE NORTH LINE OF SECTION 17, TOWNSHIP 25 SOUTH, RANGE 19 EAST, PASCO COUNTY, FLORIDA, BEING NORTH 89°51'17" WEST, AS SHOWN HEREON.
- COORDINATE VALUES SHOWN HEREON ARE BASED ON PASCO COUNTY PRIMARY HORIZONTAL CONTROL NETWORK AND WERE ESTABLISHED TO PASCO COUNTY SURVEYING AND MAPPING ACCEPTED METHODS AND PROCEDURES FOR ESTABLISHMENT OF HORIZONTAL SURVEYING CONTROL, AND/OR APPROVED BY THE COUNTY SURVEYOR.
- STATE PLANE COORDINATES SHOWN HEREON (FLORIDA WEST ZONE) WERE ESTABLISHED BY REAL-TIME KINEMATIC (RTK) GLOBAL POSITIONING SYSTEM (GPS) OBSERVATIONS UTILIZING A VIRTUAL REFERENCE STATION REAL TIME NETWORK SOLUTION, AND THE PRODUCT OF MULTIPLE OBSERVATION SESSIONS CONSISTING OF AT LEAST 60 EPOCHS EACH, AND INCLUDED NATIONAL GEODETIC SURVEY (NGS) CONTROL STATIONS "K16 055" NORTH AMERICAN DATUM (NAD) 83(2011), "P19 067" NAD 83(2011) AND "V20 210" NAD 83(2011).
- A CORNER MONUMENT INSCRIBED "AGI LB 2610" SHALL BE SET AT EACH LOT/TRACT CORNER WITHIN THE SUBDIVISION AS REQUIRED BY CHAPTER 177, PART 1 OF THE FLORIDA STATUTES WITHIN TIME ALLOTTED IN FLORIDA STATUTES 177.091(9). WHERE A CORNER MONUMENT CANNOT BE SET A WITNESS MONUMENT INSCRIBED "WITNESS LB 2610" SHALL BE SET 10 FEET OFFSET ALONG A CORRESPONDING LINE.
- ALL PLATTED UTILITY EASEMENTS SHALL PROVIDE THAT SUCH EASEMENTS SHALL ALSO BE EASEMENTS FOR THE CONSTRUCTION, INSTALLATION, MAINTENANCE, AND OPERATION OF CABLE TELEVISION SERVICES; PROVIDED, HOWEVER, NO SUCH CONSTRUCTION, INSTALLATION, MAINTENANCE, AND OPERATION OF CABLE TELEVISION SERVICES SHALL INTERFERE WITH THE FACILITIES AND SERVICES OF AN ELECTRIC, TELEPHONE, GAS, OR OTHER PUBLIC UTILITY. SUCH CONSTRUCTION, INSTALLATION, MAINTENANCE, AND OPERATION SHALL COMPLY WITH THE NATIONAL ELECTRICAL SAFETY CODE AS ADOPTED BY THE FLORIDA PUBLIC SERVICE COMMISSION.
- THIS SUBDIVISION CONTAINS RIGHTS-OF-WAY, EASEMENTS, AND OTHER COMMON AREAS WHICH ARE NEITHER OWNED NOR MAINTAINED BY PASCO COUNTY.
- ALL DISTANCES SHOWN HEREON ARE IN U.S. SURVEY FEET.
- ALL LOT AND TRACT LINES INTERSECTING A CURVE ARE RADIAL TO THAT CURVE UNLESS NOTED AS NOT RADIAL (NR).
- THE WETLAND CONSERVATION AREAS AS SHOWN HEREON MAY BE SUBJECT TO CERTAIN RESTRICTIONS FOUND IN: PASCO COUNTY LAND DEVELOPMENT CODE, SOUTHWEST FLORIDA WATER MANAGEMENT DISTRICT (SWFWMD), ENVIRONMENTAL RESOURCE PERMIT, AND/OR THE UNITED STATES ARMY CORPS OF ENGINEERS (C.O.E.) PERMIT.

TRACT	USE	AREA
1	CDD RIGHT-OF-WAY & PUBLIC UTILITY EASEMENTS	2.469
2	CDD DRAINAGE, CDD COMMON AREA, CDD OPEN SPACE, CDD WETLAND CONSERVATION AREA, FLOOD PLAIN COMPENSATION AND UTILITY EASEMENTS	46.462
3	CDD NEIGHBORHOOD PARK	0.631
PARCEL 4	COMMERCIAL DEVELOPMENT	4.764
	TRACT USE TOTAL	54.326
LOTS 1-92	RESIDENTIAL LOTS	9.077
	OVERALL SUBJECT PROPERTY	63.403



CURVE	LENGTH	RADIUS	DELTA	BEARING	CHORD
C1	164.65'	1,281.67'	7°21'38"	S59°20'44"E	164.54'
C2	139.55'	2,023.00'	3°57'08"	S61°02'50"E	139.52'
C3	94.70'	1,739.00'	3°07'13"	S54°54'15"E	94.69'
C4	112.49'	397.00'	16°14'05"	S45°13'36"E	112.11'
C5	52.24'	175.29'	17°04'34"	S45°38'51"E	52.05'
C6	178.40'	272.00'	37°34'45"	S35°23'45"E	175.22'
C7	124.31'	170.00'	41°53'48"	S37°33'17"E	121.56'
C8	193.67'	434.00'	25°34'03"	S45°43'10"E	192.06'
C9	1,447.14'	2,023.00'	40°59'11"	S12°26'33"E	1,416.49'
C10	1,091.03'	2,577.00'	24°15'27"	S04°04'42"E	1,082.90'
C11	69.17'	1,123.00'	3°31'44"	S14°26'33"E	69.16'
C12	26.05'	15.00'	99°29'07"	S24°34'27"W	22.89'
C13	99.92'	1,225.00'	4°40'24"	N27°30'18"W	99.89'
C14	20.58'	15.00'	78°36'33"	S69°08'47"E	19.00'
C15	8.94'	185.00'	2°46'04"	N72°55'58"E	8.94'

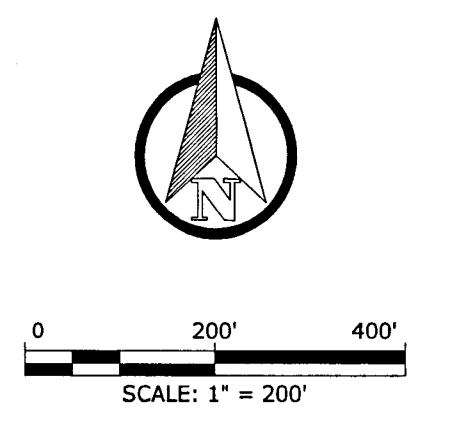
LINE	BEARING	DISTANCE
L1	S64°49'54"W	10.00'
L2	N60°09'30"E	10.00'



- PLAT LEGEND**
- FOUND IRON ROD (SIZE AND IDENTIFICATION AS SHOWN)
 - EXISTING 4"x4" CONCRETE PERMANENT REFERENCE MONUMENT (SIZE AND IDENTIFICATION AS SHOWN)
 - SET 4"x4" CONCRETE PERMANENT REFERENCE MONUMENT
 - ⊙ *AGI PRM LB 2610 UNLESS OTHERWISE NOTED
 - ⊙ PERMANENT CONTROL POINT *AGI PCP LB 2610
 - ⊙ SET NAIL & DISK *LB 2610
 - ⊙ (NR) NON RADIAL LINE
 - EASEMENTS, SIZE AND TYPE AS NOTED
 - N=XXXXX.XX STATE PLANE COORDINATES
 - T=XXXXX.XX SECTION, TOWNSHIP, RANGE
 - OA OVERALL
 - EPC ENVIRONMENTAL PROTECTION COMMISSION
 - R/W RIGHT-OF-WAY
 - PRM PERMANENT REFERENCE MONUMENT
 - WCA WETLAND CONSERVATION AREA
 - DE DRAINAGE EASEMENT
 - FTE FUTURE TECHNOLOGY EASEMENT
 - PB PLAT BOOK
 - PG PAGE
 - LB SURVEYOR BUSINESS
 - RTL REFERENCE TIE LINE
 - ORB OFFICIAL RECORD BOOK
 - WE WALL EASEMENT
 - LSE LANDSCAPE EASEMENT
 - SCH SET CONCRETE MONUMENT
 - FCM FOUND CONCRETE MONUMENT
 - S/B SETBACK
 - FOOT FLORIDA DEPARTMENT OF TRANSPORTATION
 - UE UTILITY EASEMENT
 - FOP FOUND OPEN PIPE
 - CCR CERTIFIED CORNER RECORD
 - CDD COMMUNITY DEVELOPMENT DISTRICT
 - TYP TYPICAL
 - (W) WITNESS CORNER

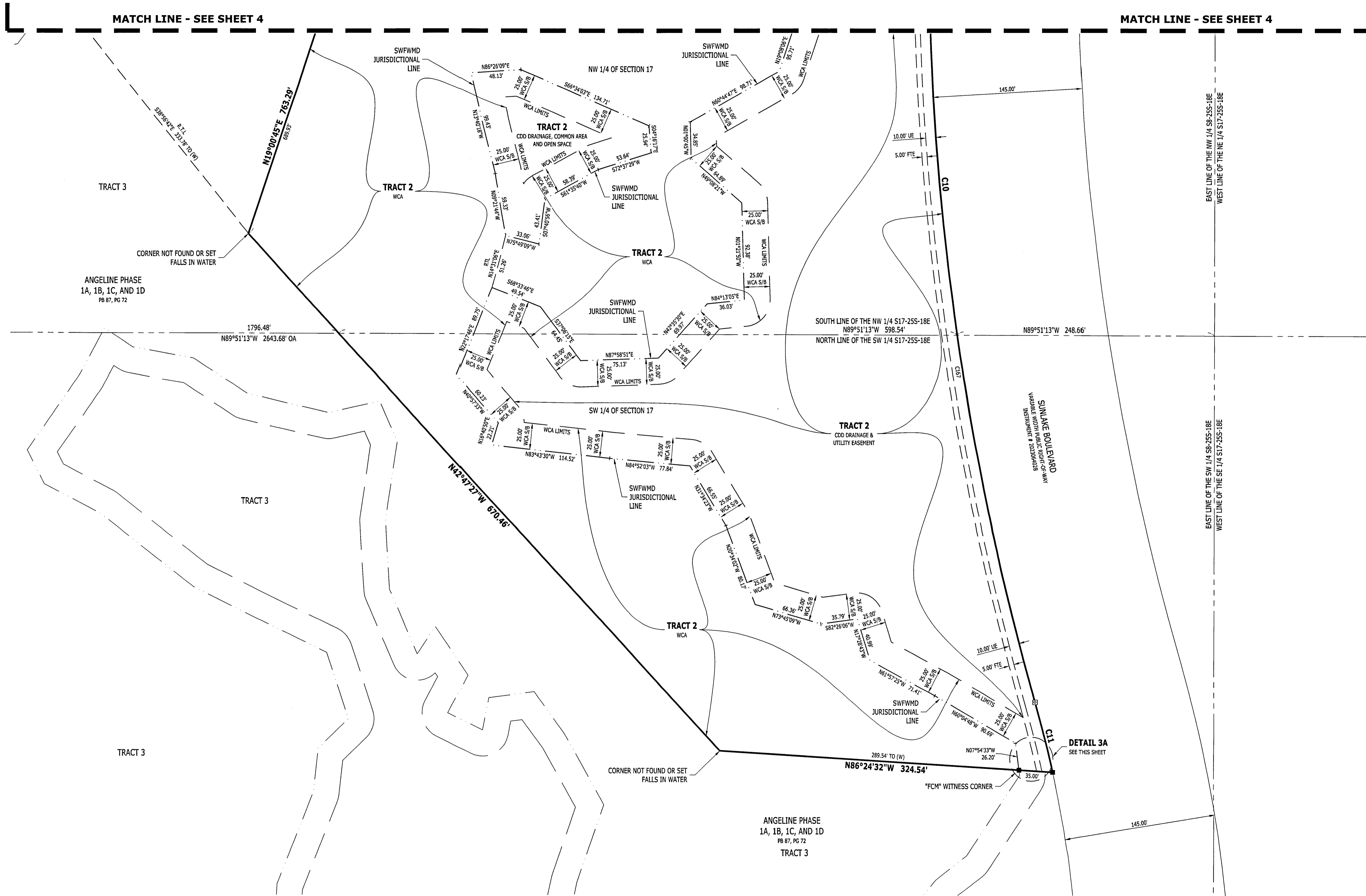
NOTICE:
THIS PLAT AS RECORDED IN ITS GRAPHIC FORM IS THE OFFICIAL DEPICTION OF THE SUBDIVIDED LANDS DESCRIBED HEREIN AND WILL IN NO CIRCUMSTANCES BE SUPPLANTED IN AUTHORITY BY ANY OTHER GRAPHIC OR DIGITAL FORM OF THE PLAT. THERE MAY BE ADDITIONAL RESTRICTIONS THAT ARE NOT RECORDED ON THIS PLAT THAT MAY BE FOUND IN THE PUBLIC RECORDS OF THIS COUNTY.

4921 Memorial Highway
One Memorial Center, Suite 300
Tampa, Florida 33634
Phone: (813) 880-8881
www.Ardurra.com
License #2610

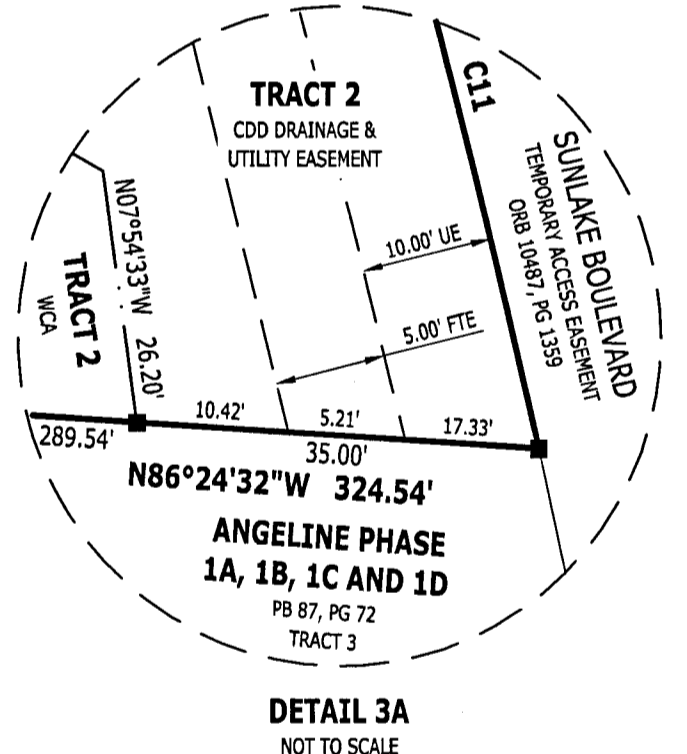


ANGELINE PHASE 1E

BEING A REPLAT OF A PORTION OF TRACTS 3 AND 21, ANGELINE PHASE 1A, 1B, 1C, AND 1D, PLAT BOOK 87, PAGE 72 OF THE PUBLIC RECORDS OF PASCO COUNTY, FLORIDA. TOGETHER WITH UNPLATTED LANDS LYING IN SECTION 8 AND 17, TOWNSHIP 25 SOUTH, RANGE 18 EAST, PASCO COUNTY, FLORIDA



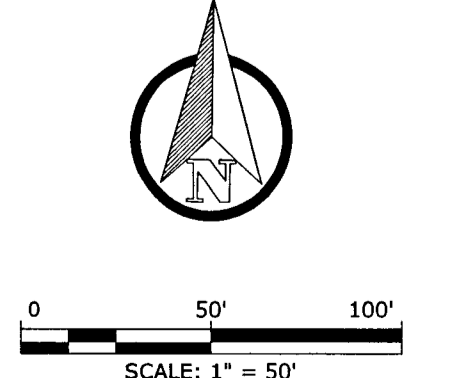
CURVE TABLE					
CURVE	LENGTH	RADIUS	DELTA	BEARING	CHORD
C10	1,091.03'	2,577.00'	24°15'27"	S04°04'42"E	1,082.90'
C11	69.17'	1,123.00'	3°31'44"	S14°26'33"E	69.16'
C167	711.24'	2,577.00'	15°48'48"	S08°18'01"E	708.99'



- PLAT LEGEND**
- FOUND IRON ROD (SIZE AND IDENTIFICATION AS SHOWN)
 - EXISTING 4"X4" CONCRETE PERMANENT REFERENCE MONUMENT (SIZE AND IDENTIFICATION AS SHOWN)
 - SET 4"X4" CONCRETE PERMANENT REFERENCE MONUMENT
 - ⊕ *AGI PRM LB 2610* UNLESS OTHERWISE NOTED
 - ⊙ PERMANENT CONTROL POINT *AGI PCT LB 2610*
 - ⊙ SET NAIL & DISK *LB 2610*
 - (NR) NON RADIAL LINE
 - EASEMENTS, SIZE AND TYPE AS NOTED
 - STATE PLANE COORDINATES
 - S17-1315-R20E SECTION, TOWNSHIP, RANGE
 - OA OVERALL
 - EPC ENVIRONMENTAL PROTECTION COMMISSION
 - R/W RIGHT-OF-WAY
 - PRM PERMANENT REFERENCE MONUMENT
 - WCA WETLAND CONSERVATION AREA
 - DE DRAINAGE EASEMENT
 - FTE FUTURE TECHNOLOGY EASEMENT
 - PB PLAT BOOK
 - PG PAGE
 - LB SURVEYOR BUSINESS
 - RTL REFERENCE TIE LINE
 - CRB OFFICIAL RECORD BOOK
 - WE WALL EASEMENT
 - LSE LANDSCAPE EASEMENT
 - SCH SET CONCRETE MONUMENT
 - FCM FOUND CONCRETE MONUMENT
 - S/B SETBACK
 - FLDOT FLORIDA DEPARTMENT OF TRANSPORTATION
 - UE UTILITY EASEMENT
 - FOP FOUND OPEN PIPE
 - CCR CERTIFIED CORNER RECORD
 - CDD COMMUNITY DEVELOPMENT DISTRICT
 - TYP TYPICAL
 - (W) WITNESS CORNER

4921 Memorial Highway
One Memorial Center, Suite 300
Tampa, Florida 33634
Phone: (813) 880-8881
www.Ardurra.com
License #2610

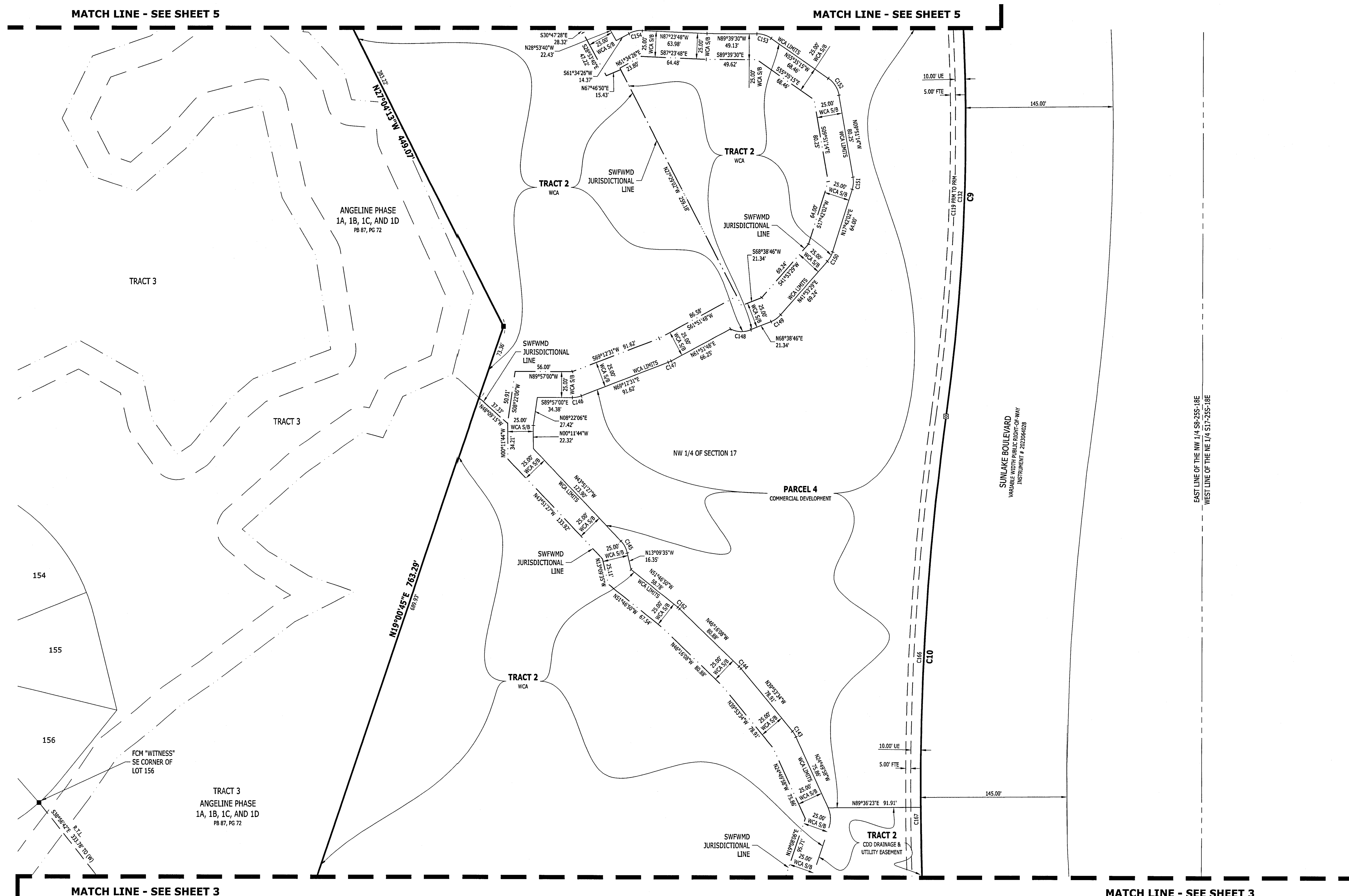
COLLABORATE. INNOVATE. CREATE.



ANGELINE PHASE 1E

BEING A REPLAT OF A PORTION OF TRACTS 3 AND 21, ANGELINE PHASE 1A, 1B, 1C, AND 1D, PLAT BOOK 87, PAGE 72 OF THE PUBLIC RECORDS OF PASCO COUNTY, FLORIDA. TOGETHER WITH UNPLATTED LANDS LYING IN SECTION 8 AND 17, TOWNSHIP 25 SOUTH, RANGE 18 EAST, PASCO COUNTY, FLORIDA

PLAT BOOK **93** PAGE **4**

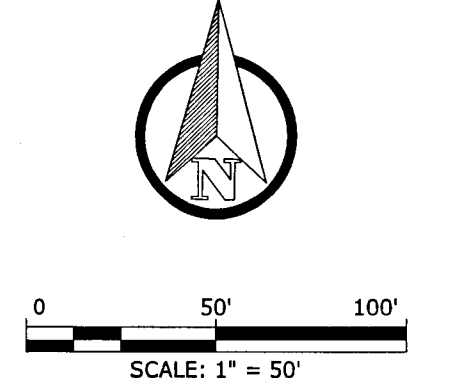


CURVE TABLE					
CURVE	LENGTH	RADIUS	DELTA	BEARING	CHORD
C9	1,447.14'	2,023.00'	40°59'11"	S12°26'33"E	1,416.49'
C10	1,091.03'	2,577.00'	24°15'27"	S04°04'42"E	1,082.90'
C119	723.57'	2,023.00'	20°29'35"	N02°11'46"W	719.72'
C132	666.51'	2,023.00'	18°52'37"	N01°23'16"W	663.50'
C143	6.57'	25.00'	15°03'36"	N32°21'46"W	6.55'
C144	2.78'	25.00'	6°22'34"	N43°04'51"W	2.78'
C145	13.39'	25.00'	30°41'52"	N28°30'31"W	13.23'
C146	9.09'	25.00'	20°50'30"	N79°37'46"E	9.04'
C147	3.20'	25.00'	7°20'43"	N65°32'09"E	3.20'
C148	20.58'	25.00'	47°09'17"	S87°46'35"E	20.00'
C149	11.67'	25.00'	26°45'18"	N53°16'08"E	11.57'
C150	10.56'	25.00'	24°11'27"	N29°47'45"E	10.48'
C151	12.02'	25.00'	27°23'16"	N03°55'24"E	11.91'
C152	19.96'	25.00'	45°44'01"	N32°43'14"W	19.43'
C153	14.87'	25.00'	34°04'15"	N72°37'22"W	14.65'
C154	13.54'	25.00'	31°01'46"	S77°05'19"W	13.37'
C162	2.40'	25.00'	5°30'42"	N49°01'29"W	2.40'
C166	379.79'	2,577.00'	8°28'39"	S03°49'43"W	379.45'
C167	711.24'	2,577.00'	15°48'48"	S08°18'01"E	708.99'

PLAT LEGEND

- FOUND IRON ROD (SIZE AND IDENTIFICATION AS SHOWN)
- EXISTING 4"x4" CONCRETE PERMANENT REFERENCE MONUMENT (SIZE AND IDENTIFICATION AS SHOWN)
- SET 4"x4" CONCRETE PERMANENT REFERENCE MONUMENT
- ⊕ *AGI PRM LB 2610* UNLESS OTHERWISE NOTED
- ⊙ PERMANENT CONTROL POINT *AGI PCP LB 2610*
- ⊙ SET NAIL & DISK "LB 2610"
- (NR) NON RADIAL LINE
- EASEMENTS, SIZE AND TYPE AS NOTED
- N=XXXXXX,XX STATE PLANE COORDINATES
- E=XXXXXX,XX SECTION, TOWNSHIP, RANGE
- S17-TJ15-R20E OVERALL
- QA OVERALL
- EPC ENVIRONMENTAL PROTECTION COMMISSION
- R/W RIGHT-OF-WAY
- PRM PERMANENT REFERENCE MONUMENT
- WCA WETLAND CONSERVATION AREA
- DE DRAINAGE EASEMENT
- FTE FUTURE TECHNOLOGY EASEMENT
- PB PLAT BOOK
- PG PAGE
- LB SURVEYOR BUSINESS
- RTL REFERENCE TIE LINE
- ORB OFFICIAL RECORD BOOK
- WE WALL EASEMENT
- LSE LANDSCAPE EASEMENT
- SCM SET CONCRETE MONUMENT
- FCM FOUND CONCRETE MONUMENT
- SETBACK SETBACK
- S/B FLORIDA DEPARTMENT OF TRANSPORTATION
- FDOT
- UE UTILITY EASEMENT
- FOP FOUND OPEN PIPE
- CCR CERTIFIED CORNER RECORD
- CCD COMMUNITY DEVELOPMENT DISTRICT
- TYP TYPICAL
- (W) WITNESS CORNER

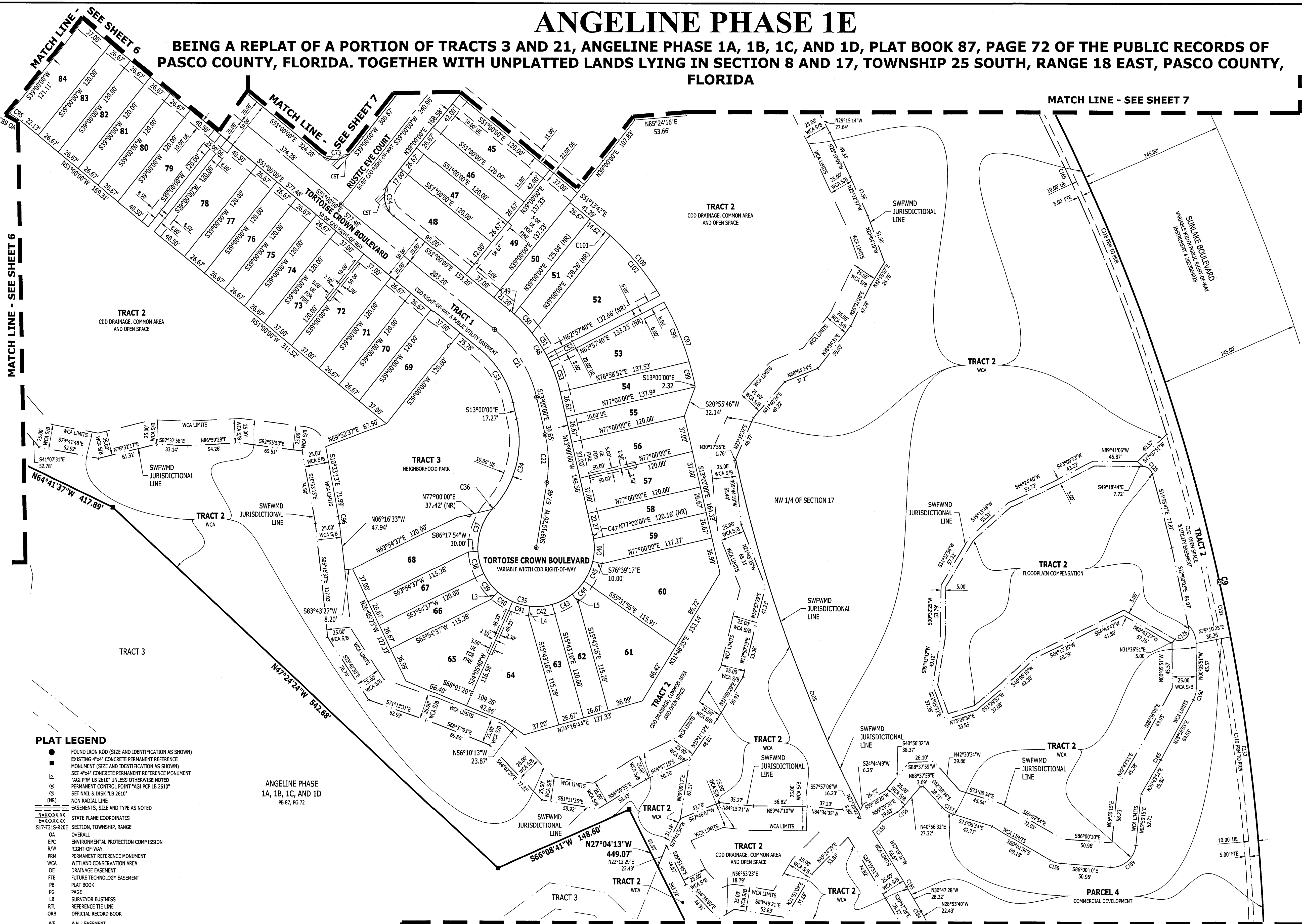
4921 Memorial Highway
One Memorial Center, Suite 300
Tampa, Florida 33634
Phone: (813) 880-8881
www.Ardurra.com
License #2610



ANGELINE PHASE 1E

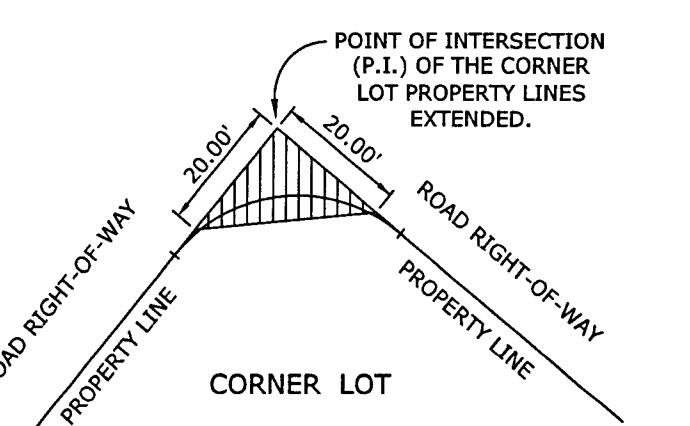
BEING A REPLAT OF A PORTION OF TRACTS 3 AND 21, ANGELINE PHASE 1A, 1B, 1C, AND 1D, PLAT BOOK 87, PAGE 72 OF THE PUBLIC RECORDS OF PASCO COUNTY, FLORIDA. TOGETHER WITH UNPLATTED LANDS LYING IN SECTION 18 AND 17, TOWNSHIP 25 SOUTH, RANGE 18 EAST, PASCO COUNTY, FLORIDA

PLAT BOOK **93** PAGE **5**



CURVE TABLE					
CURVE	LENGTH	RADIUS	DELTA	BEARING	CHORD
C9	1,447.14'	2,023.00'	40°59'11"	S12°26'33"E	1,416.49'
C21	82.90'	125.00'	38°00'00"	N32°00'00"W	81.39'
C22	48.70'	125.00'	22°19'26"	N01°50'17"W	48.40'
C33	66.32'	100.00'	38°00'00"	N32°00'00"W	65.11'
C34	97.34'	100.00'	55°46'16"	S14°53'08"W	93.54'
C35	246.90'	60.00'	235°46'18"	S75°06'52"E	106.07'
C36	2.06'	60.00'	1°58'09"	S41°47'12"W	2.06'
C37	46.60'	60.00'	44°30'13"	S18°33'01"W	45.44'
C38	23.45'	60.00'	22°23'35"	S14°53'53"E	23.30'
C39	23.45'	60.00'	22°23'32"	S37°17'27"E	23.30'
C40	18.24'	60.00'	17°25'07"	S57°11'46"E	18.17'
C41	18.24'	60.00'	17°25'07"	S74°56'53"E	18.17'
C42	23.45'	60.00'	22°23'32"	N65°28'48"E	23.30'
C43	23.45'	60.00'	22°23'35"	N63°05'14"E	23.30'
C44	18.24'	60.00'	17°25'23"	N43°10'45"E	18.18'
C45	22.12'	60.00'	21°07'21"	N23°54'23"E	21.99'
C46	23.19'	60.00'	22°08'31"	N02°16'28"E	23.04'
C47	4.40'	60.00'	4°12'12"	N10°53'54"W	4.40'
C48	99.48'	150.00'	38°00'01"	N32°00'00"W	97.67'
C49	5.47'	150.00'	2°05'23"	N49°57'18"W	5.47'
C50	26.92'	150.00'	10°16'53"	N43°46'10"W	26.88'
C51	26.34'	150.00'	10°03'43"	N33°35'52"W	26.31'
C52	8.00'	150.00'	3°03'22"	N27°02'20"W	8.00'
C53	32.75'	150.00'	12°30'38"	N19°15'20"W	32.69'
C54	39.27'	25.00'	90°00'00"	N06°00'00"W	35.36'
C73	39.27'	25.00'	90°00'00"	S84°00'00"W	35.36'
C89	27.08'	100.00'	15°31'04"	S87°34'52"W	27.00'
C95	14.91'	100.00'	8°32'41"	N55°16'20"W	14.90'
C96	7.47'	100.00'	4°16'39"	N08°24'53"W	7.46'
C97	90.36'	275.00'	18°49'36"	S20°49'40"E	89.95'
C98	66.00'	275.00'	13°45'02"	S23°21'57"E	65.84'
C99	24.36'	275.00'	5°04'33"	S13°27'59"E	24.35'
C100	92.71'	275.00'	19°18'59"	S41°54'13"E	92.27'
C101	12.05'	275.00'	2°30'36"	S49°58'24"E	12.05'
C102	80.66'	275.00'	16°48'22"	S40°18'54"E	80.38'
C108	371.33'	1,400.00'	15°11'49"	S19°51'13"E	370.24'
C118	723.57'	2,023.00'	20°29'35"	N22°41'21"W	719.72'
C119	723.57'	2,023.00'	20°29'35"	N02°11'46"W	719.72'
C125	13.23'	10.34'	73°18'34"	S51°35'57"E	12.34'
C126	22.91'	10.60'	131°16'37"	N53°38'15"E	18.22'
C131	57.07'	2,023.00'	1°36'58"	N11°38'04"W	57.08'
C132	666.51'	2,023.00'	18°52'37"	N01°23'16"E	663.50'
C155	13.75'	25.00'	31°30'08"	N44°11'31"E	13.57'
C156	8.03'	25.00'	18°23'48"	N50°08'26"E	7.99'
C157	13.37'	25.00'	30°38'00"	S74°49'34"E	13.21'
C158	11.32'	25.00'	25°55'15"	S73°01'32"E	11.23'
C159	38.47'	25.00'	88°09'35"	N49°55'03"E	34.78'
C160	12.66'	25.00'	29°03'57"	N14°26'07"E	12.55'
C163	0.67'	25.00'	1°52'03"	N31°33'29"W	0.67'
C164	0.83'	25.00'	1°53'48"	N29°50'34"W	0.83'
C165	0.74'	25.00'	1°45'45"	N29°50'58"E	0.77'
C169	574.71'	1,998.15'	16°28'49"	N25°10'25"W	572.76'

LINE TABLE		
LINE	BEARING	DISTANCE
L3	S41°30'47"W	10.00'
L4	S06°40'34"W	10.00'
L5	S38°06'34"E	10.00'



NOTE: On all corner lots, nothing will be erected, placed, or planted in such a manner as to impede vision within twenty (20) feet of the intersection of the road right-of-way lines in both directions.

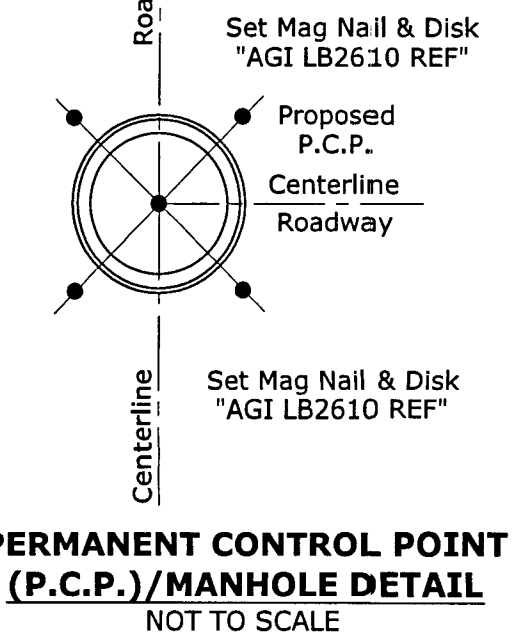
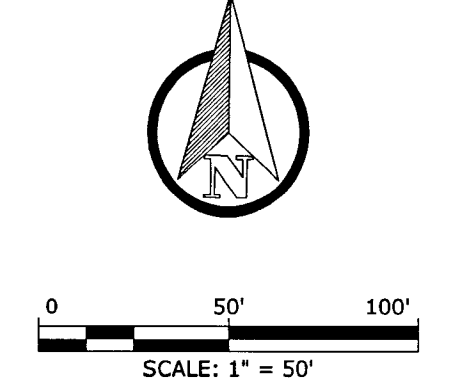
CLEAR SIGHT TRIANGLE DETAIL (C.S.T.)
NOT TO SCALE

- PLAT LEGEND**
- FOUND IRON NOD (SIZE AND IDENTIFICATION AS SHOWN)
 - EXISTING 4"x4" CONCRETE PERMANENT REFERENCE MONUMENT (SIZE AND IDENTIFICATION AS SHOWN)
 - SET 4"x4" CONCRETE PERMANENT REFERENCE MONUMENT ("AGI PRM LB 2610" UNLESS OTHERWISE NOTED)
 - PERMANENT CONTROL POINT "AGI PRM LB 2610"
 - SET NAIL & DISK "LB 2610"
 - (NR) NON RADIAL LINE
 - EASEMENTS, SIZE AND TYPE AS NOTED
 - STATE PLANE COORDINATES
 - SECTION, TOWNSHIP, RANGE
 - OA OVERALL
 - EPIC ENVIRONMENTAL PROTECTION COMMISSION
 - R/W RIGHT-OF-WAY
 - PRM PERMANENT REFERENCE MONUMENT
 - WCA WETLAND CONSERVATION AREA
 - DE DRAINAGE EASEMENT
 - FTB FUTURE TECHNOLOGY EASEMENT
 - PB PLAT BOOK
 - PG PAGE
 - LB SURVEYOR BUSINESS
 - RTL REFERENCE TIE LINE
 - ORB OFFICIAL RECORD BOOK
 - WE WALL EASEMENT
 - LSE LANDSCAPE EASEMENT
 - SCM SET CONCRETE MONUMENT
 - FCM FOUND CONCRETE MONUMENT
 - S/B SETBACK
 - S/B FLORIDA DEPARTMENT OF TRANSPORTATION
 - UE UTILITY EASEMENT
 - FP FOUND OPEN PIPE
 - CCR CERTIFIED CORNER RECORD
 - TRICAL TRICAL
 - TYP TYPICAL
 - (W) WITNESS CORNER

ANGELINE PHASE 1A, 1B, 1C, AND 1D
PB 87, PG 72

ARDURRA
COLLABORATE. INNOVATE. CREATE.

4921 Memorial Highway
One Memorial Center, Suite 300
Tampa, Florida 33634
Phone: (813) 880-8881
www.Ardurra.com
License #2610



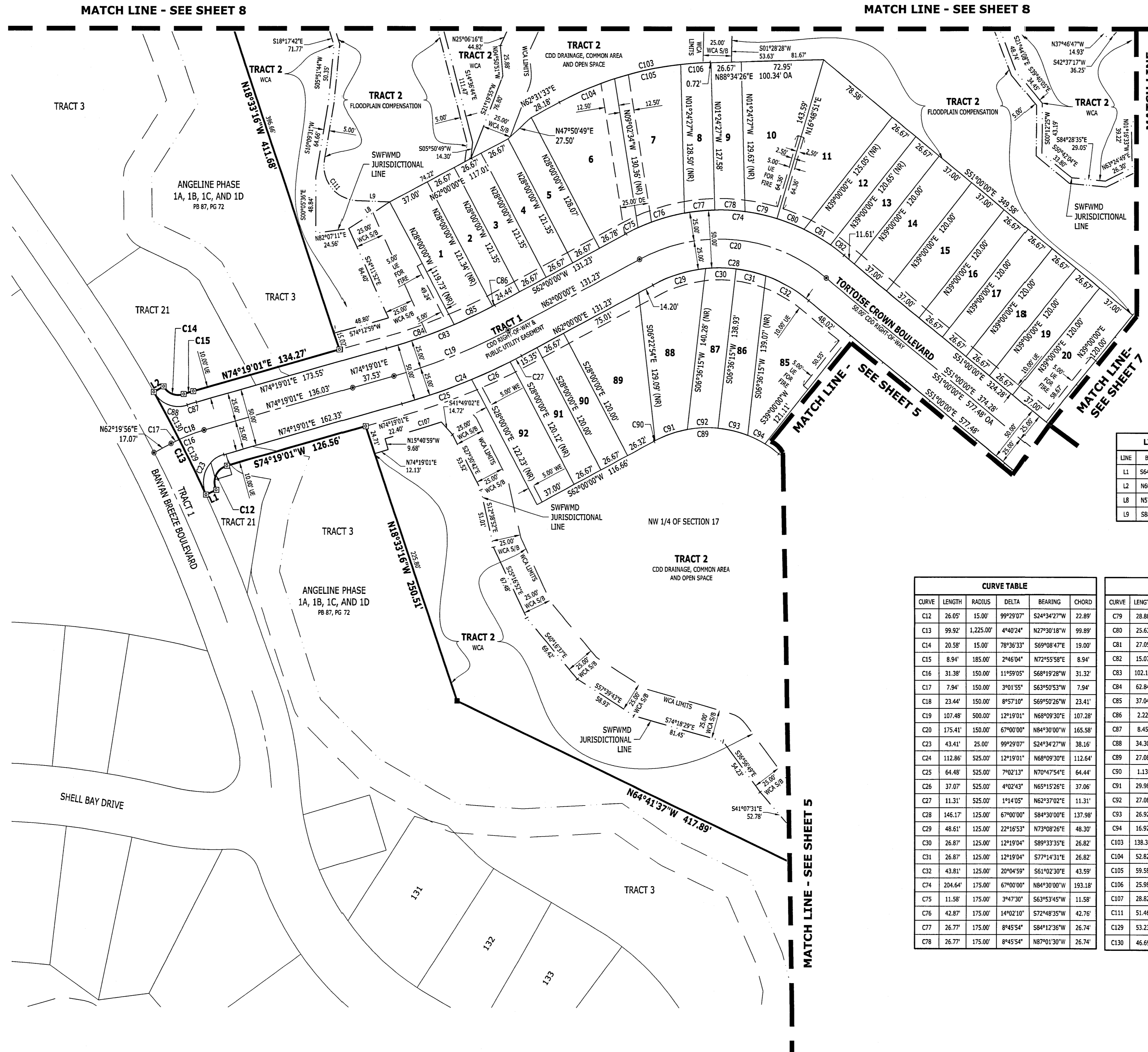
PERMANENT CONTROL POINT (P.C.P.) / MANHOLE DETAIL
NOT TO SCALE

SEE SHEET 2 OF 8 FOR KEY MAP

SHEET 5 OF 8

ANGELINE PHASE 1E

BEING A REPLAT OF A PORTION OF TRACTS 3 AND 21, ANGELINE PHASE 1A, 1B, 1C, AND 1D, PLAT BOOK 87, PAGE 72 OF THE PUBLIC RECORDS OF PASCO COUNTY, FLORIDA. TOGETHER WITH UNPLATTED LANDS LYING IN SECTION 8 AND 17, TOWNSHIP 25 SOUTH, RANGE 18 EAST, PASCO COUNTY, FLORIDA



LINE TABLE

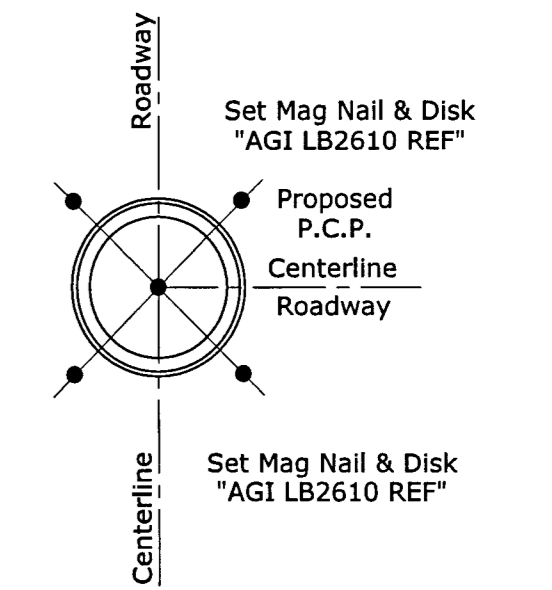
LINE	BEARING	DISTANCE
L1	S64°49'54"W	10.00'
L2	N60°09'30"E	10.00'
L8	N57°13'06"E	42.74'
L9	S88°07'30"E	28.08'

CURVE TABLE

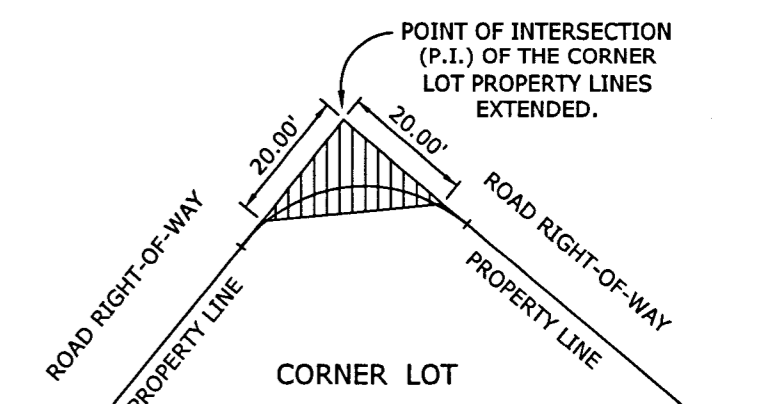
CURVE	LENGTH	RADIUS	DELTA	BEARING	CHORD
C12	26.05'	15.00'	99°29'07"	S24°34'27"W	22.89'
C13	99.92'	1,225.00'	4°40'24"	N27°30'18"W	99.89'
C14	20.58'	15.00'	78°36'33"	S69°08'47"E	19.00'
C15	8.94'	185.00'	2°46'04"	N72°55'58"E	8.94'
C16	31.38'	150.00'	11°59'05"	S68°19'28"W	31.32'
C17	7.94'	150.00'	3°01'55"	S63°50'53"W	7.94'
C18	23.44'	150.00'	8°57'10"	S69°50'26"W	23.41'
C19	107.48'	900.00'	12°19'01"	N68°09'30"E	107.28'
C20	175.41'	150.00'	67°00'00"	N84°30'00"W	165.58'
C23	43.41'	25.00'	99°29'07"	S24°34'27"W	38.16'
C24	112.86'	525.00'	12°19'01"	N68°09'30"E	112.64'
C25	64.48'	525.00'	7°02'13"	N70°47'54"E	64.44'
C26	37.07'	525.00'	4°02'43"	N65°15'28"E	37.06'
C27	11.31'	525.00'	1°14'05"	N62°37'02"E	11.31'
C28	146.17'	125.00'	67°00'00"	S84°30'00"E	137.98'
C29	48.61'	125.00'	22°16'53"	N73°08'28"E	48.30'
C30	26.87'	125.00'	12°19'04"	S89°33'35"E	26.82'
C31	26.87'	125.00'	12°19'04"	S77°14'31"E	26.82'
C32	43.81'	125.00'	20°04'59"	S61°02'30"E	43.59'
C74	204.64'	175.00'	67°00'00"	N84°30'00"W	193.18'
C75	11.58'	175.00'	3°47'30"	S63°53'45"W	11.58'
C76	42.87'	175.00'	14°02'10"	S72°48'35"W	42.76'
C77	26.77'	175.00'	8°45'54"	S84°12'36"W	26.74'
C78	26.77'	175.00'	8°45'54"	N87°01'30"W	26.74'

CURVE TABLE

CURVE	LENGTH	RADIUS	DELTA	BEARING	CHORD
C79	28.88'	175.00'	9°27'24"	N77°54'51"W	28.85'
C80	25.63'	175.00'	8°23'35"	N68°59'21"W	25.61'
C81	27.05'	175.00'	8°51'27"	N60°21'50"W	27.03'
C82	15.07'	175.00'	4°56'07"	N53°28'03"W	15.07'
C83	102.11'	475.00'	12°19'01"	S68°09'30"W	101.91'
C84	62.84'	475.00'	7°34'49"	N70°31'36"E	62.80'
C85	37.04'	475.00'	4°28'06"	S64°30'09"W	37.04'
C86	2.22'	475.00'	0°16'05"	S62°08'03"W	2.22'
C87	8.45'	175.00'	2°46'04"	S72°55'58"W	8.45'
C88	34.30'	25.00'	78°36'33"	S69°08'47"E	31.67'
C89	27.08'	100.00'	15°31'04"	S87°34'52"W	27.00'
C90	1.13'	100.00'	0°38'41"	S62°19'21"W	1.13'
C91	29.98'	100.00'	17°10'30"	S71°14'01"W	29.87'
C92	27.08'	100.00'	15°31'04"	S87°34'52"W	27.00'
C93	26.92'	100.00'	15°25'21"	N76°56'55"W	26.84'
C94	16.92'	100.00'	9°41'34"	N64°23'28"W	16.90'
C103	138.38'	302.00'	26°15'15"	N75°27'24"E	137.18'
C104	52.82'	302.00'	10°01'19"	N67°20'26"E	52.76'
C105	59.58'	302.00'	11°18'13"	N78°00'12"E	59.48'
C106	25.98'	302.00'	4°55'43"	N86°07'10"E	25.97'
C107	28.82'	550.00'	3°00'10"	N72°48'56"E	28.82'
C111	51.46'	30.00'	98°17'00"	S38°58'59"E	45.38'
C129	53.23'	1,225.00'	2°29'22"	N28°24'48"W	53.22'
C130	46.69'	1,225.00'	2°11'02"	N28°45'00"W	46.69'



PERMANENT CONTROL POINT (P.C.P.)/MANHOLE DETAIL
NOT TO SCALE

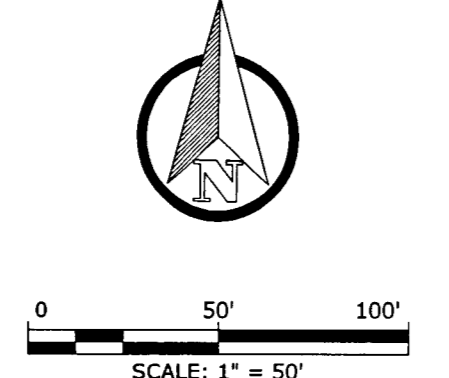


CLEAR SIGHT TRIANGLE DETAIL (C.S.T.)
NOT TO SCALE

NOTE: On all corner lots, nothing will be erected, placed, or planted in such a manner as to impede vision within twenty (20) feet of the intersection of the road right-of-way lines in both directions.

- PLAT LEGEND**
- FOUND IRON ROD (SIZE AND IDENTIFICATION AS SHOWN)
 - EXISTING 4"x4" CONCRETE PERMANENT REFERENCE MONUMENT (SIZE AND IDENTIFICATION AS SHOWN)
 - SET 4"x4" CONCRETE PERMANENT REFERENCE MONUMENT "AGI" FROM LB 2610 UNLESS OTHERWISE NOTED
 - PERMANENT CONTROL POINT "AGI" PCP LB 2610
 - SET NAIL & DISK "LB 2610"
 - (NR) NON-RADIAL LINE
 - EASEMENTS, SIZE AND TYPE AS NOTED
 - N=XXXXXX STATE PLANE COORDINATES
 - E=XXXXXX SECTION, TOWNSHIP, RANGE
 - S17-T315-R202 OVERALL
 - DA OVERALL
 - EPC ENVIRONMENTAL PROTECTION COMMISSION
 - R/W RIGHT-OF-WAY
 - PRM PERMANENT REFERENCE MONUMENT
 - WCA WETLAND CONSERVATION AREA
 - DE DRAINAGE EASEMENT
 - FTE FUTURE TECHNOLOGY EASEMENT
 - PB PLAT BOOK
 - PG PAGE
 - LB SURVEYOR BUSINESS
 - RTL REFERENCE TIE LINE
 - ORB OFFICIAL RECORD BOOK
 - WE WALL EASEMENT
 - LSE LANDSCAPE EASEMENT
 - SCM SET CONCRETE MONUMENT
 - FCM FOUND CONCRETE MONUMENT
 - SB SETBACK
 - FDOT FLORIDA DEPARTMENT OF TRANSPORTATION
 - UE UTILITY EASEMENT
 - FOP FOUND OPEN PIPE
 - CCR CERTIFIED CORNER RECORD
 - CDD COMMUNITY DEVELOPMENT DISTRICT
 - TYP TYPICAL
 - (W) WITNESS CORNER

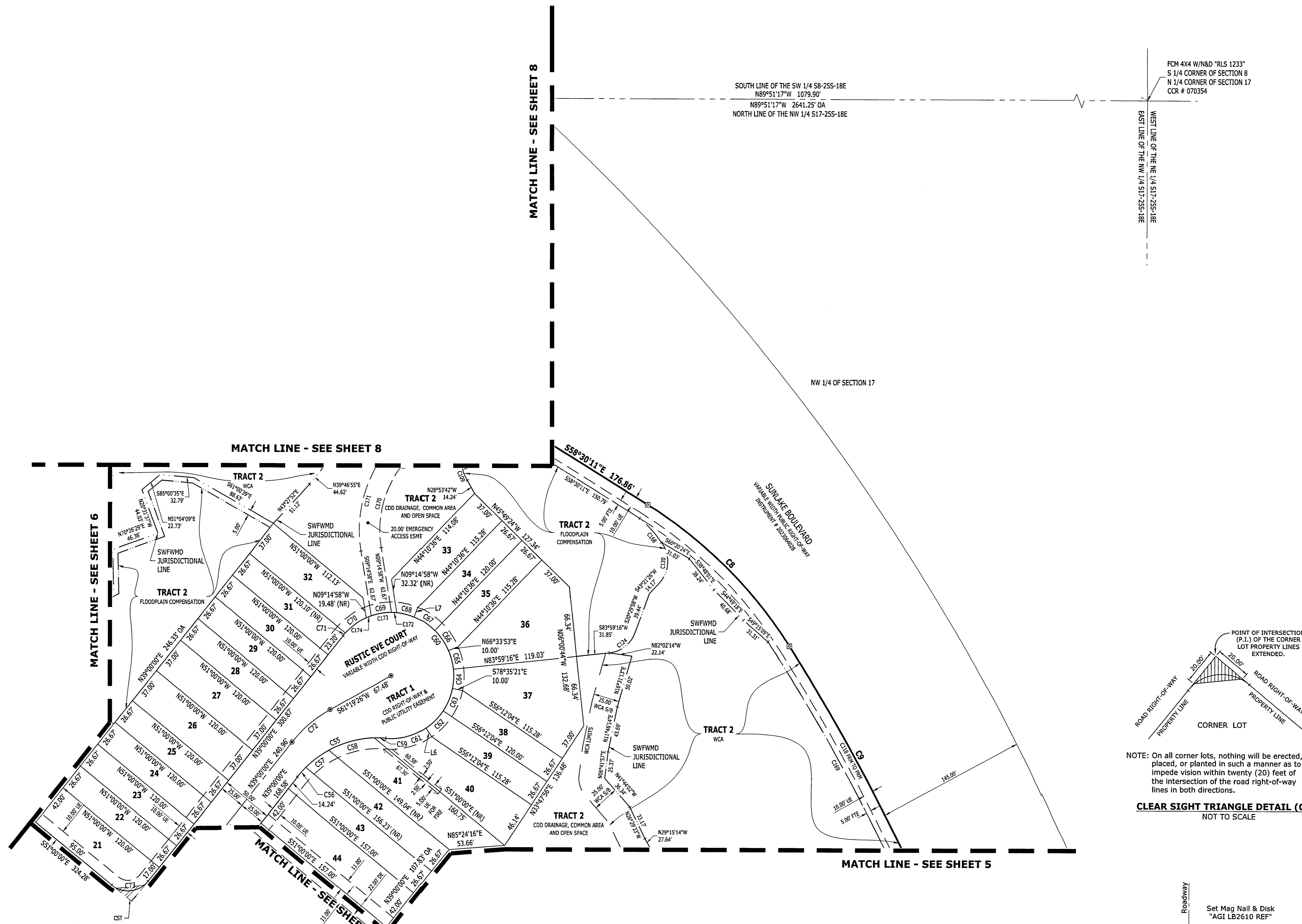
4921 Memorial Highway
One Memorial Center, Suite 300
Tampa, Florida 33634
Phone: (813) 880-8881
www.Ardurra.com
License #2610



ANGELINE PHASE 1E

BEING A REPLAT OF A PORTION OF TRACTS 3 AND 21, ANGELINE PHASE 1A, 1B, 1C, AND 1D, PLAT BOOK 87, PAGE 72 OF THE PUBLIC RECORDS OF PASCO COUNTY, FLORIDA. TOGETHER WITH UNPLATTED LANDS LYING IN SECTION 8 AND 17, TOWNSHIP 25 SOUTH, RANGE 18 EAST, PASCO COUNTY, FLORIDA

PLAT BOOK **93** PAGE **7**

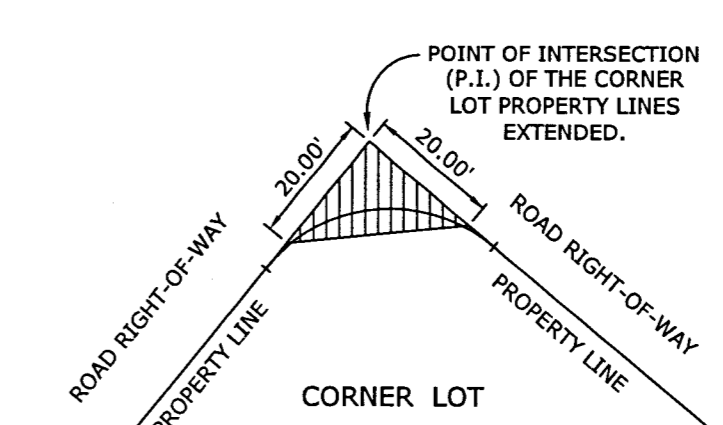


LINE TABLE

LINE	BEARING	DISTANCE
L6	S33°48'14"E	10.00'
L7	N21°46'46"E	10.00'

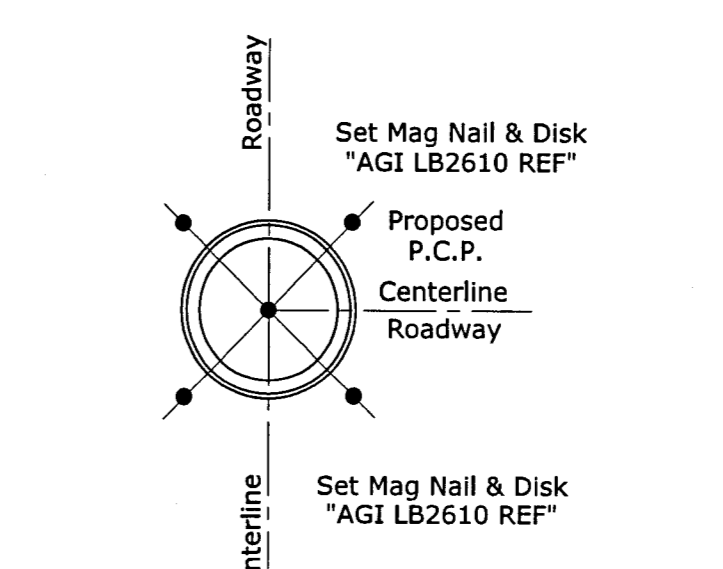
CURVE TABLE

CURVE	LENGTH	RADIUS	DELTA	BEARING	CHORD
C8	193.67'	434.00'	25°34'03"	S45°43'10"E	192.06'
C9	1,447.14'	2,023.00'	40°59'11"	S12°26'33"E	1,416.49'
C55	97.34'	100.00'	55°46'15"	N66°53'08"E	93.54'
C56	12.45'	100.00'	7°08'09"	N42°34'05"E	12.45'
C57	27.71'	100.00'	15°52'26"	N54°04'22"E	27.62'
C58	46.31'	100.00'	26°31'58"	N75°16'34"E	45.90'
C59	10.87'	100.00'	6°13'43"	S88°20'35"E	10.87'
C60	246.90'	60.00'	235°46'18"	N23°06'52"W	106.07'
C61	40.40'	60.00'	38°34'30"	N75°29'01"E	39.64'
C62	23.45'	60.00'	22°23'32"	N45°00'00"E	23.30'
C63	23.45'	60.00'	22°23'35"	N22°36'28"E	23.30'
C64	18.25'	60.00'	17°25'23"	N02°41'57"E	18.18'
C65	18.25'	60.00'	17°25'23"	N14°43'25"W	18.18'
C66	23.45'	60.00'	22°23'35"	N34°33'54"W	23.30'
C67	23.45'	60.00'	22°23'32"	N57°01'28"W	23.30'
C68	17.33'	60.00'	16°33'05"	N76°29'46"W	17.27'
C69	30.32'	60.00'	38°57'18"	S80°45'02"W	30.00'
C70	25.09'	60.00'	23°57'34"	S54°17'36"W	24.91'
C71	3.47'	60.00'	3°18'49"	S40°39'24"W	3.47'
C72	48.70'	125.00'	22°19'26"	S50°09'43"W	48.40'
C73	39.17'	25.00'	90°00'00"	S84°00'00"W	35.36'
C109	78.10'	29.50'	151°22'38"	N41°00'51"E	57.28'
C118	723.57'	2,023.00'	20°29'35"	N22°41'21"W	719.72'
C120	42.22'	30.00'	60°38'35"	N03°02'08"E	38.82'
C124	33.24'	30.00'	63°29'18"	S52°14'37"W	31.57'
C168	31.34'	120.88'	14°51'19"	S42°45'25"E	31.25'
C169	574.74'	1,998.15'	16°28'49"	N25°10'25"W	572.76'
C170	81.89'	100.00'	46°55'08"	N14°12'36"E	79.62'
C171	98.27'	120.00'	46°55'08"	S14°12'36"W	95.54'
C172	5.11'	60.00'	4°53'00"	N87°12'49"W	5.11'
C173	20.09'	60.00'	19°11'17"	S80°45'02"W	20.00'
C174	5.11'	60.00'	4°53'00"	S68°42'53"W	5.11'



NOTE: On all corner lots, nothing will be erected, placed, or planted in such a manner as to impede vision within twenty (20) feet of the intersection of the road right-of-way lines in both directions.

CLEAR SIGHT TRIANGLE DETAIL (C.S.T.)
NOT TO SCALE



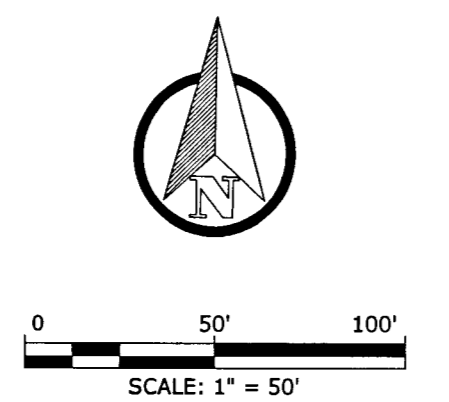
PERMANENT CONTROL POINT (P.C.P.)/MANHOLE DETAIL
NOT TO SCALE

- PLAT LEGEND**
- FOUND IRON ROD (SIZE AND IDENTIFICATION AS SHOWN)
 - EXISTING 4"x4" CONCRETE PERMANENT REFERENCE MONUMENT (SIZE AND IDENTIFICATION AS SHOWN)
 - SET 4"x4" CONCRETE PERMANENT REFERENCE MONUMENT "AGI PPM LB 2610" UNLESS OTHERWISE NOTED
 - ⊙ PERMANENT CONTROL POINT "AGI PCP LB 2610"
 - ⊙ SET NAIL & DISK "LB 2610"
 - (NR) NON RADIAL LINE
 - EASEMENTS, SIZE AND TYPE AS NOTED
 - N=XXXXXXXX STATE PLANE COORDINATES
 - E=XXXXXXXX SECTION, TOWNSHIP, RANGE
 - S17-T15-R22E OVERALL
 - EA ENVIRONMENTAL PROTECTION COMMISSION
 - R/W RIGHT-OF-WAY
 - PRM PERMANENT REFERENCE MONUMENT
 - WCA WETLAND CONSERVATION AREA
 - DE DRAINAGE EASEMENT
 - FTE FUTURE TECHNOLOGY EASEMENT
 - PB PLAT BOOK
 - PG PAGE
 - LB SURVEYOR BUSINESS
 - RTL REFERENCE TIE LINE
 - ORB OFFICIAL RECORD BOOK
 - WE WALL EASEMENT
 - LSE LANDSCAPE EASEMENT
 - SCM SET CONCRETE MONUMENT
 - FCM FOUND CONCRETE MONUMENT
 - SFB SETBACK
 - FDOT FLORIDA DEPARTMENT OF TRANSPORTATION
 - UE UTILITY EASEMENT
 - FOP FOUND OPEN PIPE
 - CCR CERTIFIED CORNER RECORD
 - CDD COMMUNITY DEVELOPMENT DISTRICT
 - TYP TYPICAL
 - (W) WITNESS CORNER

SEE SHEET 2 OF 8 FOR KEY MAP

SHEET 7 of 8

4921 Memorial Highway
One Memorial Center, Suite 300
Tampa, Florida 33634
Phone: (813) 880-8881
www.Ardurra.com
License #2610



ANGELINE PHASE 1E

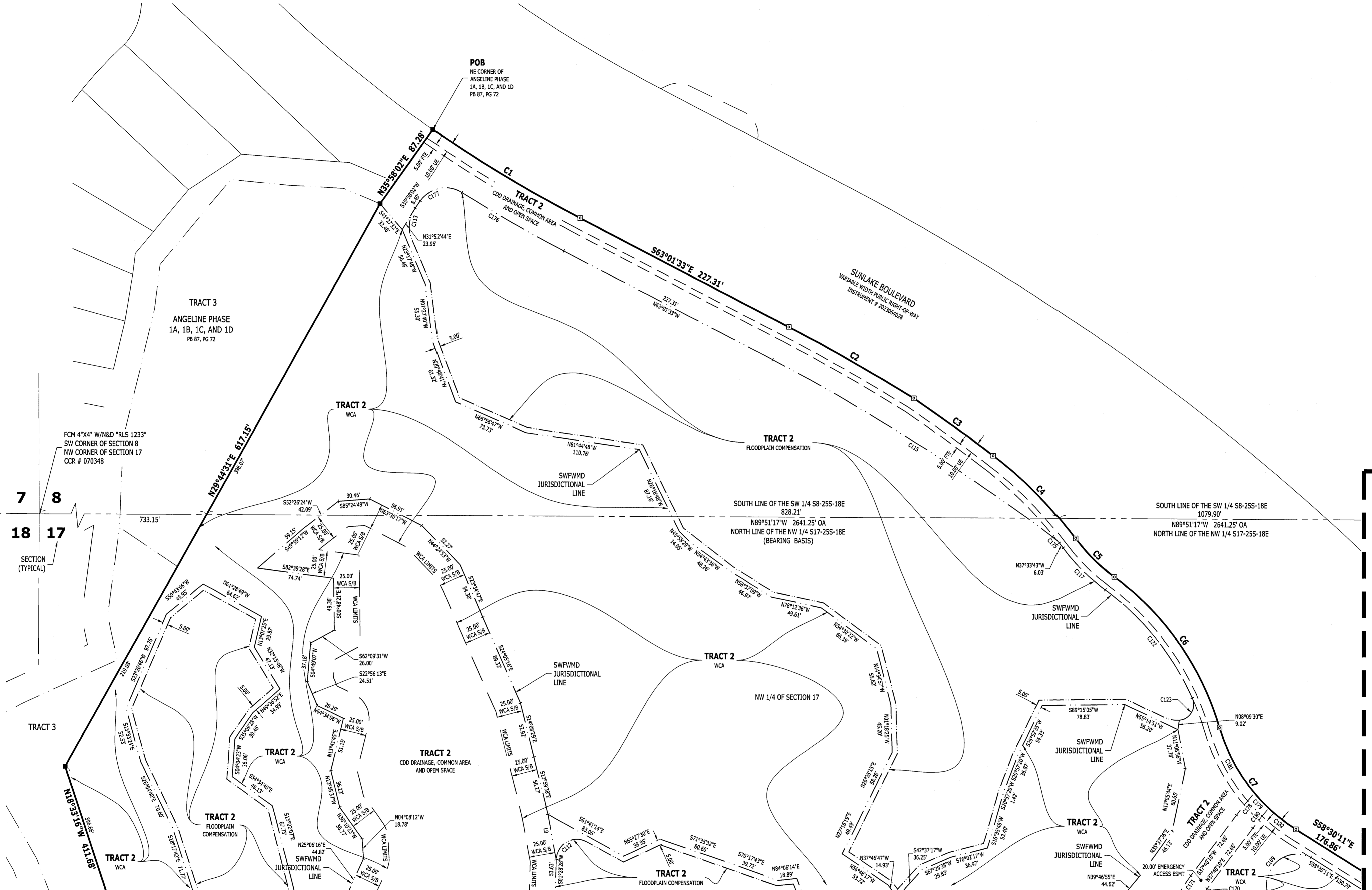
BEING A REPLAT OF A PORTION OF TRACTS 3 AND 21, ANGELINE PHASE 1A, 1B, 1C, AND 1D, PLAT BOOK 87, PAGE 72 OF THE PUBLIC RECORDS OF PASCO COUNTY, FLORIDA. TOGETHER WITH UNPLATTED LANDS LYING IN SECTION 8 AND 17, TOWNSHIP 25 SOUTH, RANGE 18 EAST, PASCO COUNTY, FLORIDA

PLAT BOOK **93** PAGE **8**

CURVE TABLE				
CURVE	LENGTH	RADIUS	DELTA	CHORD
C1	164.65'	1,281.67'	7°21'38"	559°20'44"E 164.54'
C2	139.55'	2,023.00'	3°57'08"	S61°02'59"E 139.52'
C3	94.70'	1,739.00'	3°07'13"	S54°54'15"E 94.69'
C4	112.49'	397.00'	16°14'05"	S45°13'36"E 112.11'
C5	52.24'	175.29'	17°04'34"	S45°38'51"E 52.05'
C6	178.40'	272.00'	37°34'45"	S39°23'45"E 175.22'
C7	124.31'	170.00'	41°53'48"	S37°33'17"E 121.56'
C109	78.10'	29.56'	151°22'38"	N41°00'51"E 57.28'
C112	39.09'	20.00'	111°59'48"	S62°18'52"W 33.16'
C113	31.03'	30.00'	59°15'50"	S06°20'07"W 29.67'
C115	321.47'	1,988.00'	9°15'54"	N58°23'36"W 321.12'
C117	56.71'	190.29'	17°04'34"	N45°38'51"W 56.50'
C122	133.94'	257.00'	29°51'42"	N39°15'17"W 132.43'
C123	28.94'	15.00'	110°32'28"	N30°56'48"E 24.66'
C170	81.89'	100.00'	46°55'08"	N14°12'36"E 79.62'
C171	98.27'	120.00'	46°55'08"	S14°12'36"W 95.54'
C175	8.24'	30.00'	15°44'47"	N45°53'16"W 8.22'
C176	112.22'	1,316.67'	4°53'00"	N60°35'03"W 112.19'
C177	14.51'	30.00'	27°42'51"	S49°49'28"W 14.37'
C178	27.39'	510.00'	3°04'38"	S39°12'29"W 27.39'
C179	20.10'	170.00'	6°46'30"	N43°55'59"W 20.09'
C180	24.45'	490.00'	2°51'33"	N39°05'57"E 24.45'
C181	71.03'	170.00'	23°56'22"	S28°34'34"E 70.51'
C182	33.18'	170.00'	11°10'57"	S52°54'43"E 33.13'

LINE TABLE		
LINE	BEARING	DISTANCE
L9	S10°30'20"E	43.68'

- PLAT LEGEND**
- FOUND IRON ROD (SIZE AND IDENTIFICATION AS SHOWN)
 - EXISTING 4"x4" CONCRETE PERMANENT REFERENCE MONUMENT (SIZE AND IDENTIFICATION AS SHOWN)
 - SET 4"x4" CONCRETE PERMANENT REFERENCE MONUMENT "AGI FROM LA 3610" UNLESS OTHERWISE NOTED
 - ⊙ PERMANENT CONTROL POINT "AGI PCP LB 2610"
 - ⊙ SET NAIL & DISK "LB 2610"
 - (NR) NON RADIAL LINE
 - N=XXXXXX.EK STATE PLANE COORDINATES
 - E=XXXXXX.XX SECTION, TOWNSHIP, RANGE
 - S17-T25-R20E OVERALL
 - OA ENVIRONMENTAL PROTECTION COMMISSION
 - R/W RIGHT-OF-WAY
 - PRM PERMANENT REFERENCE MONUMENT
 - WCA WETLAND CONSERVATION AREA
 - DE DRAINAGE EASEMENT
 - FTE FUTURE TECHNOLOGY EASEMENT
 - PB PLAT BOOK
 - PG PAGE
 - LB SURVEYOR BUSINESS
 - RTL REFERENCE TIE LINE
 - ORB OFFICIAL RECORD BOOK
 - WE WALL EASEMENT
 - LSE LANDSCAPE EASEMENT
 - SCM SET CONCRETE MONUMENT
 - S/B SETBACK
 - FDOT FLORIDA DEPARTMENT OF TRANSPORTATION
 - UE UTILITY EASEMENT
 - FOP FOUND OPEN PIPE
 - CCR CERTIFIED CORNER RECORD
 - CDD COMMUNITY DEVELOPMENT DISTRICT
 - TYP TYPICAL
 - (W) WITNESS CORNER



ARDURRA
COLLABORATE. INNOVATE. CREATE.

4921 Memorial Highway
One Memorial Center, Suite 300
Tampa, Florida 33634
Phone: (813) 880-8881
www.ardurra.com
License #2610

SCALE: 1" = 50'