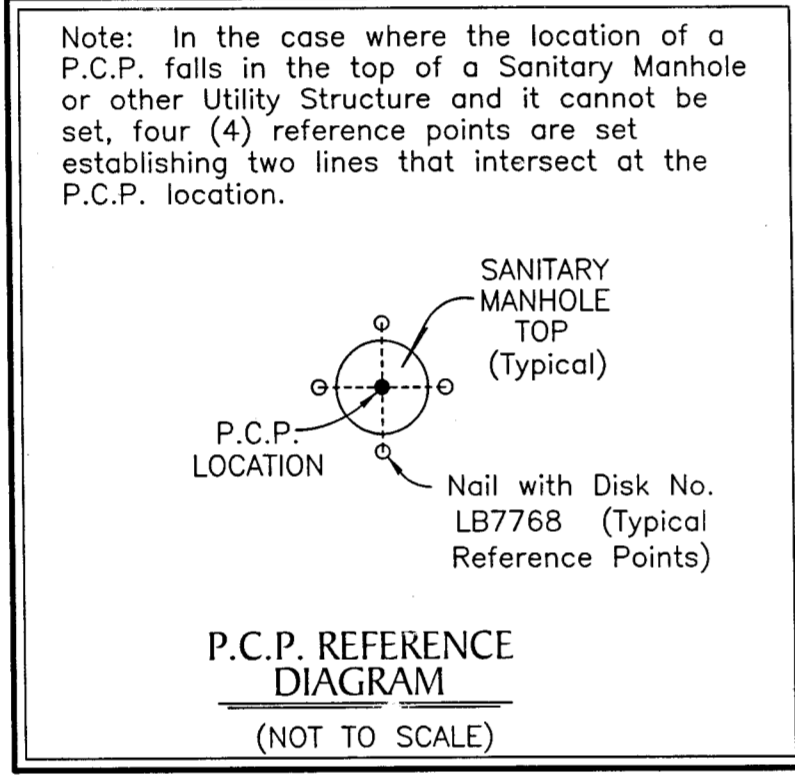
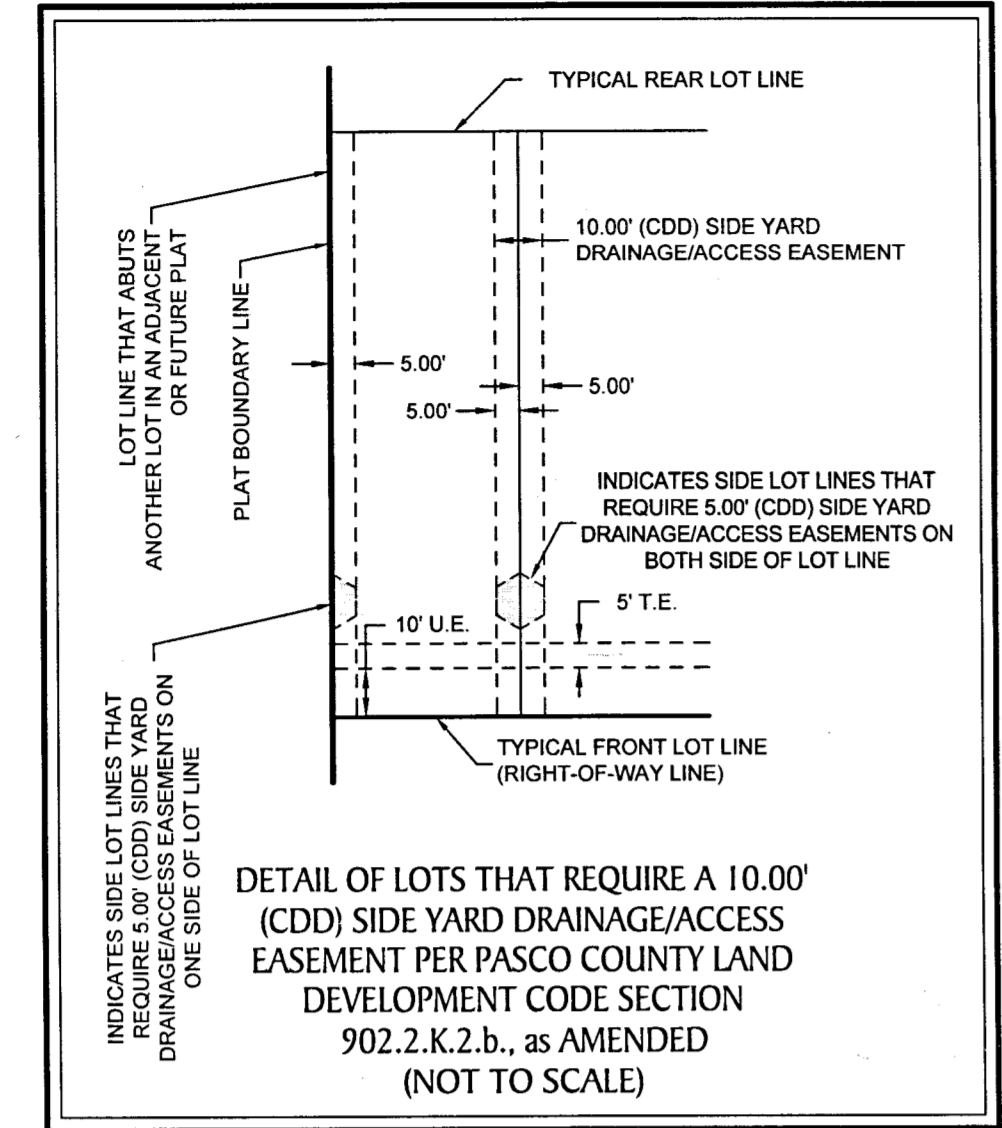


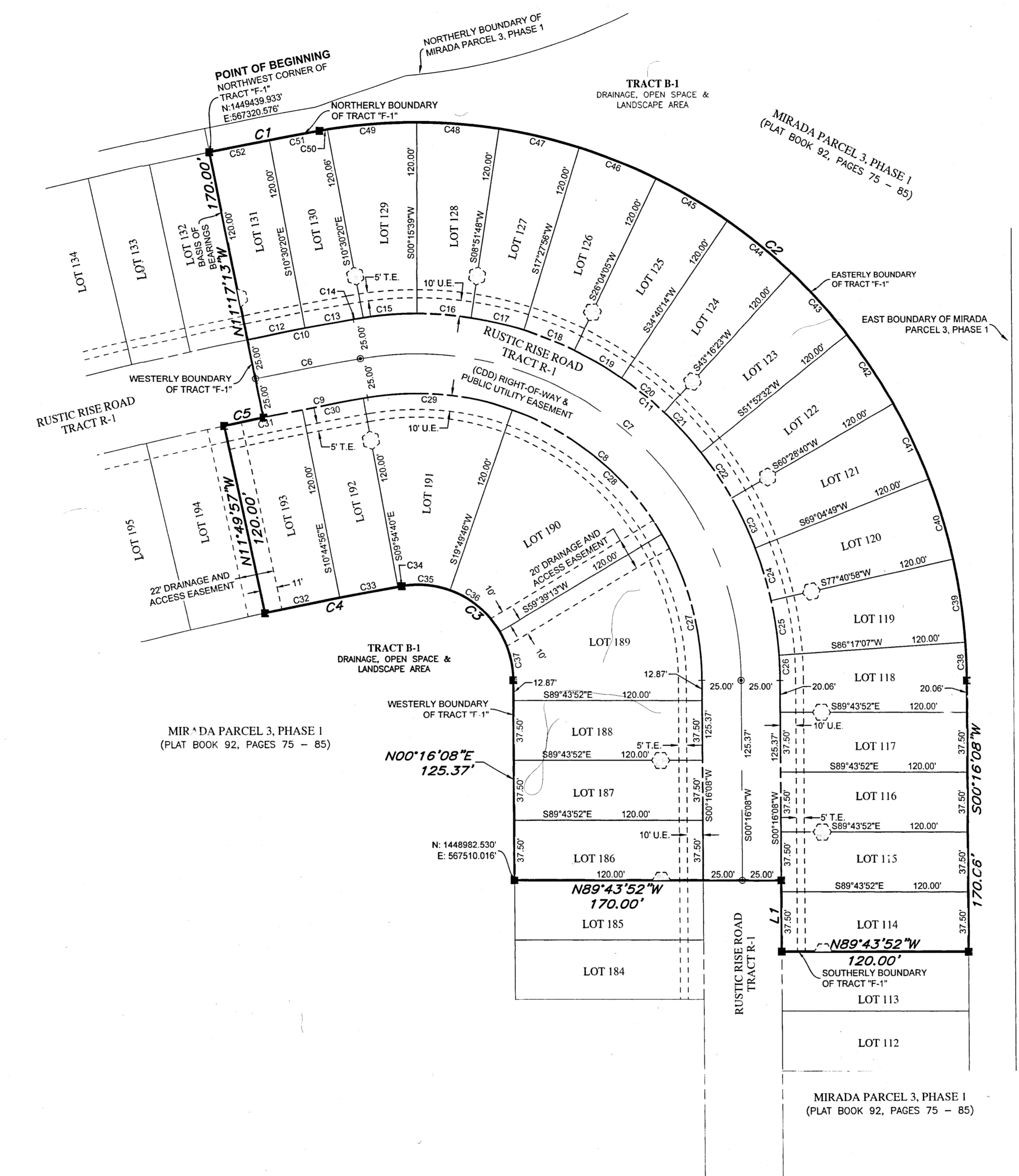
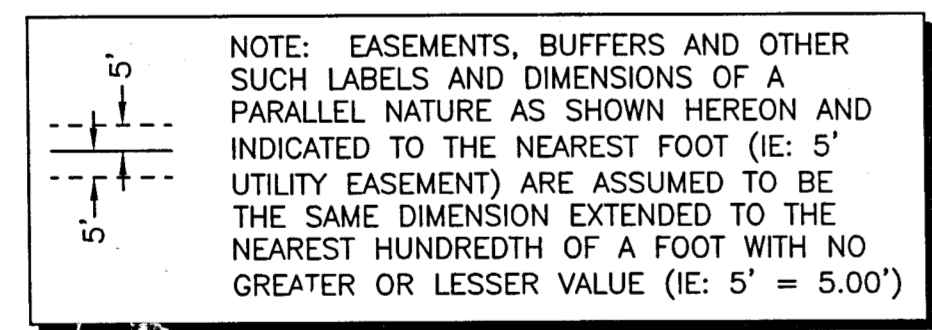
SCALE 1" = 150'
0 75 150 300

MIRADA PARCEL 3, PHASE 2

A REPLAT OF TRACT "F-1" OF MIRADA PARCEL 3, PHASE 1, AS RECORDED IN PLAT BOOK 92, PAGES 75 THROUGH 85, OF THE PUBLIC RECORDS OF PASCO COUNTY, FLORIDA, LYING IN SECTION 11, TOWNSHIP 25 SOUTH, RANGE 20 EAST, PASCO COUNTY, FLORIDA.



NOTE:
A 1/2 INCH DIAMETER IRON PIPE WITH CAP No. LB7768 WILL BE SET AT EACH LOT CORNER AS REQUIRED BY CHAPTER 177 OF THE FLORIDA STATUTES WITHIN THE TIME ALLOTTED IN 177.091 (9), UNLESS PRIOR MONUMENTATION OF THE LOT CORNER IS FOUND IN PLACE.



NO.	RADIUS	DELTA	ARC	CHORD	BEARING
C1	2850.00'	1°26'04"	71.35'	71.35'	N 79°25'49" E
C2	350.00'	100°07'17"	611.61'	536.71'	S 49°47'31" E
C3	60.00'	100°07'17"	104.85'	92.01'	N 49°47'31" W
C4	2560.00'	1°58'48"	88.47'	88.46'	S 79°09'27" W
C5	2680.00'	0°32'44"	25.52'	25.52'	N 78°26'29" E
C6	2705.00'	1°26'04"	67.72'	67.72'	N 79°25'49" E
C7	205.00'	100°07'17"	358.23'	314.36'	S 49°47'31" E
C8	180.00'	100°07'17"	314.54'	276.02'	N 49°47'31" W
C9	2680.00'	1°44'41"	81.61'	81.61'	S 79°16'30" W
C10	2730.00'	1°26'04"	68.35'	68.35'	S 79°25'49" W
C11	230.00'	100°07'17"	401.91'	352.69'	N 49°47'31" W
C12	2730.00'	0°46'53"	37.23'	37.23'	S 79°06'13" W
C13	2730.00'	0°39'11"	31.12'	31.12'	S 79°49'15" W
C14	230.00'	1°35'24"	6.38'	6.38'	S 80°56'33" W
C15	230.00'	8°31'23"	34.21'	34.18'	S 85°59'57" W
C16	230.00'	8°36'09"	34.53'	34.50'	N 85°26'17" W
C17	230.00'	8°36'09"	34.53'	34.50'	N 76°50'08" W
C18	230.00'	8°36'09"	34.53'	34.50'	N 68°13'59" W
C19	230.00'	8°36'09"	34.53'	34.50'	N 59°37'50" W
C20	230.00'	8°36'09"	34.53'	34.50'	N 51°01'42" W
C21	230.00'	8°36'09"	34.53'	34.50'	N 42°25'33" W
C22	230.00'	8°36'09"	34.53'	34.50'	N 33°49'24" W
C23	230.00'	8°36'09"	34.53'	34.50'	N 25°13'15" W
C24	230.00'	8°36'09"	34.53'	34.50'	N 16°37'06" W
C25	230.00'	8°36'09"	34.53'	34.50'	N 08°00'58" W
C26	230.00'	3°01'51"	15.99'	15.99'	N 01°43'23" W

NO.	RADIUS	DELTA	ARC	CHORD	BEARING
C27	180.00'	30°36'54"	96.18'	95.04'	N 15°02'19" W
C28	180.00'	39°49'28"	125.11'	122.61'	N 50°15'30" W
C29	180.00'	29°40'55"	93.25'	92.21'	N 85°00'42" W
C30	2680.00'	0°53'47"	41.93'	41.93'	S 79°41'58" W
C31	2680.00'	1°05'01"	50.69'	50.69'	S 78°42'34" W
C32	2560.00'	1°05'01"	48.42'	48.42'	S 78°42'34" W
C33	2560.00'	0°50'16"	37.43'	37.43'	S 79°40'12" W
C34	2560.00'	0°03'31"	2.61'	2.61'	S 80°07'06" W
C35	60.00'	29°40'55"	31.08'	30.74'	N 85°00'42" W
C36	60.00'	39°49'28"	41.70'	40.87'	N 50°15'30" W
C37	60.00'	30°36'54"	32.06'	31.68'	N 15°02'19" W
C38	350.00'	3°59'01"	24.33'	24.33'	N 01°43'23" W
C39	350.00'	8°36'09"	52.55'	52.50'	N 08°00'58" W
C40	350.00'	8°36'09"	52.55'	52.50'	N 16°37'06" W
C41	350.00'	8°36'09"	52.55'	52.50'	N 25°13'15" W
C42	350.00'	8°36'09"	52.55'	52.50'	N 33°49'24" W
C43	350.00'	8°36'09"	52.55'	52.50'	N 42°25'33" W
C44	350.00'	8°36'09"	52.55'	52.50'	N 51°01'42" W
C45	350.00'	8°36'09"	52.55'	52.50'	N 59°37'50" W
C46	350.00'	8°36'09"	52.55'	52.50'	N 68°13'59" W
C47	350.00'	8°36'09"	52.55'	52.50'	N 76°50'08" W
C48	350.00'	8°36'09"	52.55'	52.50'	N 85°26'17" W
C49	350.00'	9°17'33"	56.76'	56.70'	N 85°36'52" W
C50	350.00'	0°49'15"	5.01'	5.01'	S 90°33'28" W
C51	2850.00'	0°39'11"	32.49'	32.49'	S 79°49'15" W
C52	2850.00'	0°46'53"	38.86'	38.86'	S 79°06'13" W

NO.	BEARING	LENGTH
L1	N 00°16'08" E	44.69'

- LEGEND:
- indicates (P.R.M.) Permanent Reference Monument - 4"x4" Concrete Monument LB7768, unless otherwise noted.
 - ⊕ indicates (P.R.M.) Offset Permanent Reference Monument - 4"x4" Concrete Monument LB7768, unless otherwise noted.
 - indicates (P.C.P.) Permanent Control Point LB7768
 - (NR) indicates non-radial line
 - O.R. Official Records Book
 - T.E. Technology Easement
 - U.E. Utility Easement

NOTE:
All platted utility easements shall provide that such easements shall also be easements for the construction, installation, maintenance, and operation of cable television services; provided, however, no such construction, installation, maintenance, and operation of cable television services shall interfere with facilities and services of an electric, telephone, gas, or other public utility. In the event a cable television company damages the facilities of a public utility, it shall be solely responsible for the damages. This section shall apply to those private easements granted to or obtained by a particular electric, telephone, gas, or other public utility. Such construction, installation, maintenance, and operation shall comply with National Electrical Safety Code as adopted by the Florida Public Service Commission.

NOTE:
ALL LINES INTERSECTING A CURVE ARE RADIAL (R) UNLESS OTHERWISE NOTED AS NON-RADIAL (NR).

The coordinate values shown hereon are based on the National Geodetic Survey Control Points and were established to Third Order Class I accuracy as defined by the Standards and Specifications for Geodetic Control Networks, as published by the Federal Geodetic Control Committee dated September 1984 or latest edition. "T31-122", "T34-135" and "N30124"

NOTICE: This plat, as recorded in its graphic form, is the official depiction of the subdivided lands described herein and will in no circumstances be supplanted in any other graphic or digital form of the plat. There may be additional restrictions that are not recorded on this plat that may be found in the public records of this county.

TRACT DESIGNATIONS

TRACT R-1 (CDD) RIGHT-OF-WAY AND PUBLIC UTILITY EASEMENT 27.75 SQFT

BASIS OF BEARINGS

The Westerly boundary of Tract "F-1" of MIRADA PARCEL 3, PHASE 1 as recorded in Plat Book 92, Pages 75 through 85, of the Public Records of Pasco County, Florida, has a Grid bearing of N.11°17'13"E. The Grid bearings as shown hereon refer to the State Plane Coordinate System (NAD 83-1990 ADJUSTMENT) for the West Zone of Florida.

GeoPoint Surveying, Inc.
213 Hobbs Street
Tampa, Florida 33619
www.geopointsurvey.com
Phone: (813) 248-8888
Fax: (813) 248-2266
Licensed Business Number LB 7768
SHEET 2 OF 2 SHEETS