

DEERBROOK, PHASE 2

A REPLAT OF TRACT F-1 OF DEERBROOK, PHASE 1. PLAT BOOK 93, PAGE 38, LYING IN SECTION 2 & 3, TOWNSHIP 26 SOUTH, RANGE 18 EAST & SECTION 34, TOWNSHIP 25 SOUTH, RANGE 18 EAST, PASCO COUNTY, FLORIDA

DESCRIPTION: A replat of Tract "F-1" of DEERBROOK, PHASE 1, as recorded in Plat Book 93 Page 38, of the Public records of Pasco County, Florida, and being more particularly described as follows:

BEGIN at the Northwest corner of said Tract "F-1", run thence along the Northerly, Easterly, Southerly, and Westerly boundary the following Ninety-four (94) courses: 1) N.89°57'39"E, a distance of 1685.90 feet; 2) N.41°00'00"E, a distance of 259.00 feet; 3) Northerly, 39.27 feet along the arc of a tangent curve to the left having a radius of 25.00 feet and a central angle of 90°00'00" (chord bearing N.04°00'00"W, 35.36 feet); 4) N.49°00'00"W, a distance of 316.00 feet; 5) Westerly, 31.42 feet along the arc of a tangent curve to the left having a radius of 20.00 feet and a central angle of 90°00'00" (chord bearing S.86°00'00"W, 28.28 feet); 6) N.41°00'00"E, a distance of 468.00 feet; 7) S.49°00'00"E, a distance of 415.00 feet; 8) S.46°49'16"E, a distance of 38.93 feet; 9) S.41°09'00"E, a distance of 38.68 feet; 10) S.35°27'00"E, a distance of 38.68 feet; 11) S.29°45'00"E, a distance of 38.68 feet; 12) S.24°03'00"E, a distance of 38.68 feet; 13) S.18°21'00"E, a distance of 38.68 feet; 14) S.12°38'05"E, a distance of 38.64 feet; 15) S.08°20'00"E, a distance of 20.00 feet; 16) S.04°01'55"E, a distance of 38.68 feet; 17) S.01°41'00"W, a distance of 38.68 feet; 18) S.07°23'00"W, a distance of 38.68 feet; 19) S.13°05'00"W, a distance of 38.68 feet; 20) S.18°47'00"W, a distance of 38.68 feet; 21) S.24°29'00"W, a distance of 38.68 feet; 22) S.30°11'00"W, a distance of 38.68 feet; 23) S.35°53'00"W, a distance of 38.68 feet; 24) S.40°05'47"W, a distance of 51.10 feet; 25) S.40°12'07"W, a distance of 14.75 feet; 26) S.35°37'00"W, a distance of 38.73 feet; 27) S.30°03'00"W, a distance of 68.75 feet; 28) S.19°45'33"W, a distance of 50.10 feet; 29) S.13°39'00"W, a distance of 50.45 feet; 30) S.08°37'00"W, a distance of 38.73 feet; 31) S.03°35'00"W, a distance of 38.73 feet; 32) S.00°01'44"E, a distance of 42.49 feet; 33) S.00°10'00"E, a distance of 541.43 feet; 34) S.05°37'43"E, a distance of 50.00 feet; 35) S.17°22'00"E, a distance of 38.41 feet; 36) S.24°18'00"E, a distance of 38.22 feet; 37) S.31°14'00"E, a distance of 38.22 feet; 38) S.38°10'00"E, a distance of 38.22 feet; 39) S.45°06'00"E, a distance of 38.22 feet; 40) S.52°02'00"E, a distance of 38.22 feet; 41) S.58°58'00"E, a distance of 38.22 feet; 42) S.65°54'00"E, a distance of 120.00 feet; 43) S.72°50'00"E, a distance of 38.22 feet; 44) S.79°46'00"E, a distance of 38.22 feet; 45) S.86°42'00"E, a distance of 38.22 feet; 46) N.89°50'00"E, a distance of 120.00 feet; 47) S.89°27'07"E, a distance of 38.41 feet; 48) S.84°24'00"E, a distance of 38.41 feet; 49) S.78°40'00"E, a distance of 38.41 feet; 50) S.72°50'00"E, a distance of 38.41 feet; 51) S.67°12'00"E, a distance of 38.41 feet; 52) S.61°28'00"E, a distance of 38.41 feet; 53) S.55°44'00"E, a distance of 38.41 feet; 54) S.50°00'00"E, a distance of 38.41 feet; 55) S.44°36'00"E, a distance of 38.41 feet; 56) S.38°32'00"E, a distance of 51.53 feet; 57) S.30°03'47"E, a distance of 50.00 feet; 58) S.21°20'00"E, a distance of 39.15 feet; 59) S.15°36'00"E, a distance of 38.41 feet; 60) S.09°52'00"E, a distance of 38.41 feet; 61) S.07°00'00"E, a distance of 410.00 feet; 62) S.02°43'11"E, a distance of 51.05 feet; 63) S.01°22'00"W, a distance of 47.35 feet; 64) S.05°36'00"W, a distance of 47.35 feet; 65) S.07°08'41"W, a distance of 39.55 feet; 66) S.03°45'00"W, a distance of 39.15 feet; 67) S.00°15'00"W, a distance of 39.15 feet; 68) S.03°15'00"E, a distance of 39.15 feet; 69) S.06°45'50"E, a distance of 39.46 feet; 70) S.10°17'30"E, a distance of 39.46 feet; 71) S.13°49'10"E, a distance of 58.68 feet; 72) S.17°20'50"E, a distance of 50.00 feet; 73) S.20°52'30"E, a distance of 39.46 feet; 74) S.24°24'10"E, a distance of 39.46 feet; 75) S.27°55'50"E, a distance of 58.68 feet; 76) S.28°17'00"E, a distance of 50.00 feet; 77) S.28°52'30"E, a distance of 39.46 feet; 78) S.29°45'00"E, a distance of 39.46 feet; 79) S.29°45'00"E, a distance of 220.21 feet; 80) N.57°29'56"W, a distance of 220.21 feet; 81) N.00°23'02"W, a distance of 304.60 feet; 82) N.47°32'35"W, a distance of 43.19 feet; 83) S.59°28'00"W, a distance of 118.74 feet; 84) N.57°29'56"W, a distance of 78.50 feet; 85) S.71°24'19"E, a distance of 71.80 feet; 86) N.28°53'41"E, a distance of 49.33 feet; 87) S.47°47'41"W, a distance of 22.89 feet; 88) S.00°22'55"E, a distance of 271.94 feet; 89) N.57°29'56"W, a distance of 1542.19 feet; 90) N.87°08'08"W, a distance of 1256.42 feet; 91) N.00°11'04"W, a distance of 120.18 feet; 92) N.87°05'08"W, a distance of 80.12 feet; 93) N.00°11'04"W, a distance of 1096.83 feet; 94) N.00°09'28"E, a distance of 424.42 feet to the POINT OF BEGINNING.

Containing 120.720 acres, more or less.

OWNER: SK DEERBROOK LLC, A DELAWARE LIMITED LIABILITY COMPANY, AUTHORIZED TO BUSINESS IN THE STATE OF FLORIDA

By: James F. Harvey, Vice President. Witnesses: Dana Rhodes, Andrew Hill.

ACKNOWLEDGMENT:

STATE OF FLORIDA )
COUNTY OF HILLSBOROUGH )

I hereby certify on this 12th day of AUGUST, 2024, before me personally appeared by means of physical presence James P. Harvey, as Vice President of SK Deerbrook LLC, a Delaware Limited Liability Company, known to me or who has produced as identification, who has identified himself as the person described in and who executed the foregoing certificate of ownership and dedication and severally acknowledged the execution thereof to be their free act and deed for the uses and purposes therein expressed.

Witness my hand and seal at Hillsborough County, Florida, the day and year aforesaid.

Notary Public, State of Florida at Large. My commission expires: 01-27-28. Commission Number: HH456833.

CERTIFICATE OF OWNERSHIP AND DEDICATION

SK DEERBROOK LLC, a Delaware Limited Liability Company (the "Owner"), authorized to do business in Florida hereby states and declares that it is the fee simple owner of all lands referred to as "Deerbrook Phase 2" and as described in the description, which is part of this plat, and makes the following dedications:

- 1. Owner does hereby grant, convey and dedicate Tract B-2 (Drainage, Landscape, Access, Open Space, Mitigation and/or Wetland Conservation Area), Tract B-3 (Drainage, Landscape, Access & Open Space), and Tract B-4 (Drainage, Landscape, Access & Open Space) as shown and depicted hereon to the Deerbrook Community Development District, a local unit of special purpose government organized and existing pursuant to Chapter 190, Florida Statutes (the "District") as evidenced by its execution of this plat. The District accepts this dedication and agrees to maintain the foregoing tracts.
2. Owner does hereby grant, convey and dedicate the roadways shown and depicted hereon as TRACT A (CDD) Right-of-Way, Drainage Easement and (Public) Utility Easement to the District as evidenced by its execution of this plat. The District accepts this dedication and agrees to maintain the roadways and appurtenances therein. None of the roadways within TRACT A as shown and depicted on this plat shall be deemed to be dedicated to Pasco County, Florida (the "County").
3. Owner hereby grants, conveys and dedicates to the County a perpetual ingress-egress easement over and across all (CDD) Rights-of-Way shown as TRACT "A" for any and all governmental purposes including (without limitation) fire and law enforcement, and emergency medical services.
4. Owner hereby grants, conveys and dedicates to the District all Drainage and Access Easements and (CDD) Side Yard Drainage/Access Easements as shown hereon for maintenance and other purposes incidental thereto. As evidenced by its execution of this plat, the District accepts this dedication and agrees to maintain the foregoing easements.
5. The Owner further does:

a. grant, convey, and dedicate to the County, statutorily authorized public utility entities and all licensed private utility entities a non-exclusive, unobstructed Utility Easement for water, sewer, street lights, fire protection, telephone, electric, cable television, and other utilities over and across those portions of the Plat shown as "Utility Easement", and identified hereon for such purposes, the use and benefit of which shall extend and inure to the benefit of the County, statutorily authorized public utility entities and all duly licensed private utility companies. In the event utility improvements are constructed within such Utility Easement areas, it shall be the responsibility of the utility entities to repair or replace said utility improvements as necessary for maintenance of said utilities.

b. reserve unto itself, its successors, assigns, or legal representatives the title to any lands or improvements dedicated to the public or to the County, if for any reason such dedication shall be either voluntarily vacated, voided, or invalidated to the extent consistent with FS 177.085(1).

c. reserve unto itself, its respective heirs, successors, assigns or legal representatives a non-exclusive easement in common with others located within the Utility Easement over and across the front of all lots on this Plat. Said non-exclusive easement is for the installation, operation and maintenance and/or replacement of underground utility conduits and related facilities to accommodate whatever cables and line that the Owner elects to install or have installed within said conduits, including, but not limited to cable television, internet access, telecommunications and bulk telecommunication services to the extent consistent with FS 177.091(2B).

d. convey to the District, its successors, assigns, or legal representatives, a Wall easement located in the rear of some lots, labeled and depicted hereon. Said Wall easement is for the installation, operation, and maintenance and/or replacement of the wall. The District shall be responsible for the easement at all times.

e. hereby grant, convey, warrant and dedicate to the County a Non-Exclusive Flow Through Easement and reasonable right of access to ensure the free flow of water for general public drainage purposes over, through and under all drainage easements or commonly owned property shown on this plat. In the event the District fails to properly maintain any drainage easements/facilities preventing the free flow of water, the County shall have the reasonable right, but not the obligation, to access and enter upon any drainage easement for the purpose of performing maintenance to ensure the free flow of water.

CERTIFICATE OF ACCEPTANCE:

of the Deerbrook Community Development District

The chapter to Deerbrook Community Development District, a local unit of special purpose government, created pursuant to Chapter 190, Florida Statutes, was accepted at an open meeting of the Deerbrook Community Development District by their Board of Supervisors this 12th day of AUGUST, 2024 and hereby consents to and joins in the recording of this instrument and accepts the dedications and maintenance responsibilities shown hereon.

Candice Bain, Chairman. Witnesses: Dana Rhodes, Andrew Hill.

ACKNOWLEDGMENT:

STATE OF FLORIDA )
COUNTY OF HILLSBOROUGH )

I hereby certify on this 12th day of AUGUST, 2024, before me personally appeared by means of physical presence Candice Bain, as Chairman of Deerbrook Community Development District, known to me or who has produced as identification, who has identified herself as the person described in and who executed the foregoing certificate of acceptance and severally acknowledged the execution thereof to be their free act and deed for the uses and purposes therein expressed.

Witness my hand and seal at Hillsborough County, Florida, the day and year aforesaid.

Notary Public, State of Florida at Large. My commission expires: 01-27-28. Commission Number: HH456833.

MORTGAGEE: CONSENT TO DEDICATION

Lands being platted, rec. as of the date of platting, encumbered by certain Mortgage and Security Agreement dated February 25, 2022 recorded in Official Record Book 10563, Page 3122 of the Public Records of Pasco County, Florida, in favor of D.R. Horton, Inc. and a separate Joinder and Consent to the Plat of Deerbrook, Phase 2 is being recorded in the Public Records of Pasco County, Florida, concurrent with the recording of this Plat.

PROPERTY INFORMATION

STATE OF FLORIDA
COUNTY OF MANATEE } SS

We, Chicago Title Insurance Company, a Title Company duly licensed in the State of Florida, based on said report find that the title of the property is vested in SK Deerbrook, LLC, a Delaware Limited Liability Company, that the easements that have been paid, and that the property is not encumbered by any mortgages, other encumbrances or easements other than shown on the Property Information Report for the Filing of a Subdivision Plat, File No. 11562044.

THIS THE 13th DAY OF August, 2024.

Chicago Title Insurance Company. Robert F. Greene, Authorized Agent.

REVIEW OF PLAT BY PROFESSIONAL SURVEYOR AND MAPPER, PASCO COUNTY, FLORIDA

Pursuant to Section 177.081 (1), Florida Statutes, I hereby certify that I, or a Florida Professionally licensed Surveyor and Mapper designee under my direction and supervision, have performed a limited review of this plat for conformity to Chapter 177 Part 1, Florida Statutes, and that this plat complies with the technical requirements of said chapter, however my review and certification does not include computations or field verification of any points or measurements.

Signed and Sealed this 14th day of August, 2024.

Alex W. Parnes, Pasco County Surveyor. Florida Professional Surveyor and Mapper No. 5131.

BOARD OF COUNTY COMMISSIONERS:

This is to certify, that on this the 12th day of August, 2024, the foregoing plat was approved to be recorded by the Board of County Commissioners of Pasco County, Florida.

Chairman of the Board of County Commissioners.

CLERK OF THE CIRCUIT COURT:

I hereby certify, that the foregoing plat has been filed in the Public Records of Pasco County, Florida this 22nd day of August, 2024 in Plat Book 96, Pages 17-26.

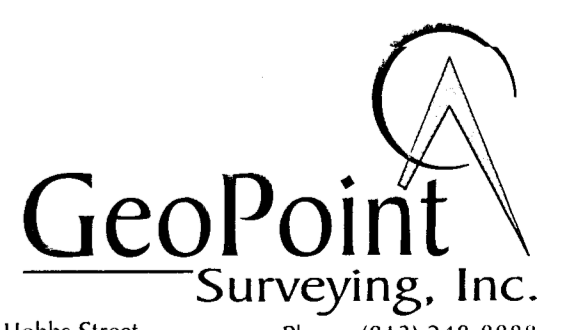
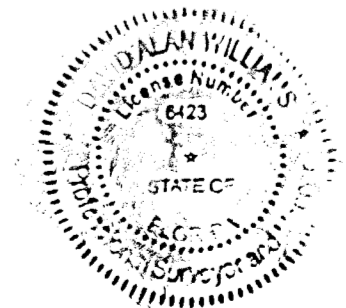
Nikki Alvarez-Sowles, Esq. Pasco County Clerk and Comptroller.

CERTIFICATE OF SURVEYOR

The undersigned, being currently licensed by the State of Florida as a Professional Surveyor and Mapper, does hereby certify that this plat was prepared under my direction and supervision, and said plat complies with all survey requirements of Florida Statutes, Chapter 177, Part 1.

Signed and Sealed this 12th day of August, 2024.

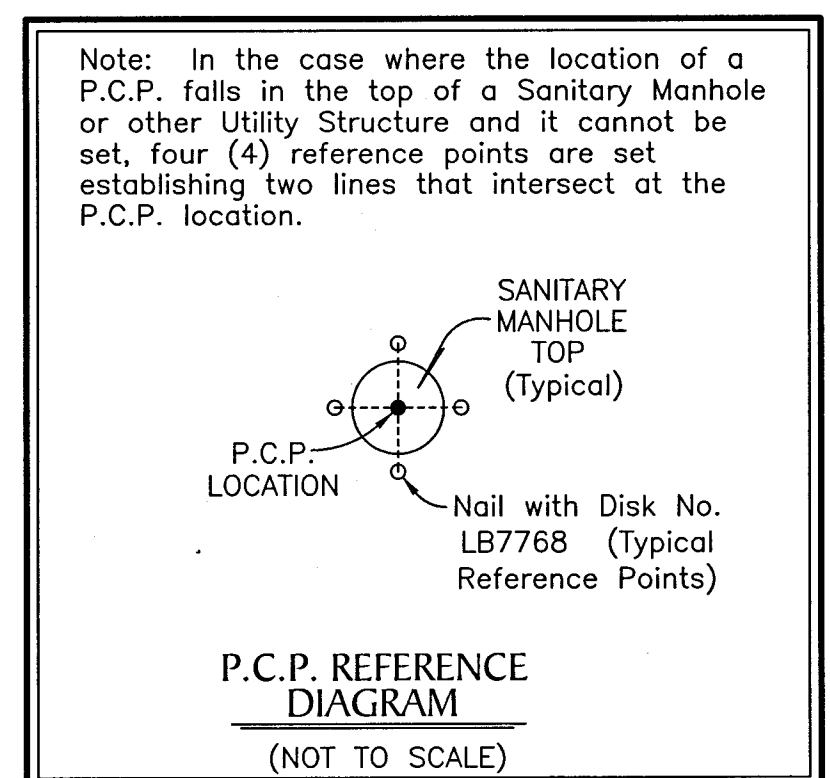
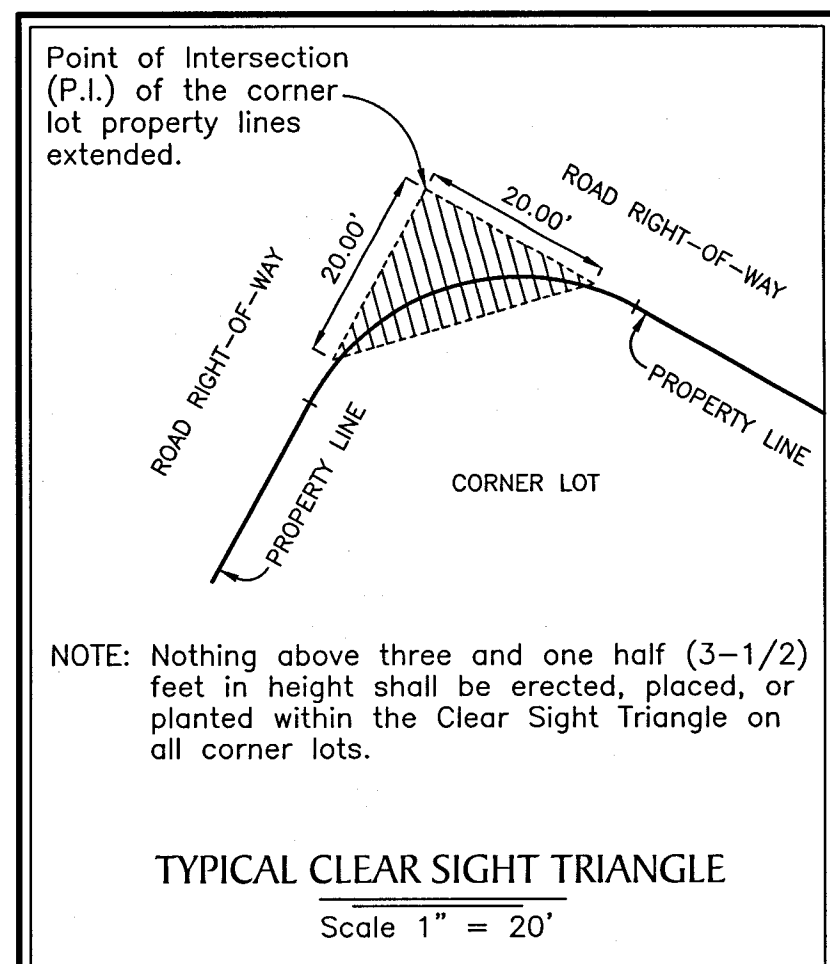
David A. Williams. Professional Land Surveyor No. L56423. Certificate of Authorization No. LB7768.



213 Hobbs Street, Tampa, Florida 33619. Phone: (813) 248-8888. Fax: (813) 248-2266. www.geopointsurvey.com. Licensed Business Number LB 7768.

# DEERBROOK, PHASE 2

A REPLAT OF TRACT F-1 OF DEERBROOK, PHASE 1. PLAT BOOK 93, PAGE 38,  
LYING IN SECTION 2 & 3, TOWNSHIP 26 SOUTH, RANGE 18 EAST & SECTION 34,  
TOWNSHIP 25 SOUTH, RANGE 18 EAST, PASCO COUNTY, FLORIDA



**NOTICE:** This plat, as recorded in its graphic form, is the official depiction of the subdivided lands described herein and will in no circumstances be supplanted in authority by any other graphic or digital form of the plat. There may be additional restrictions that are not recorded on this plat that may be found in the public records of this county.

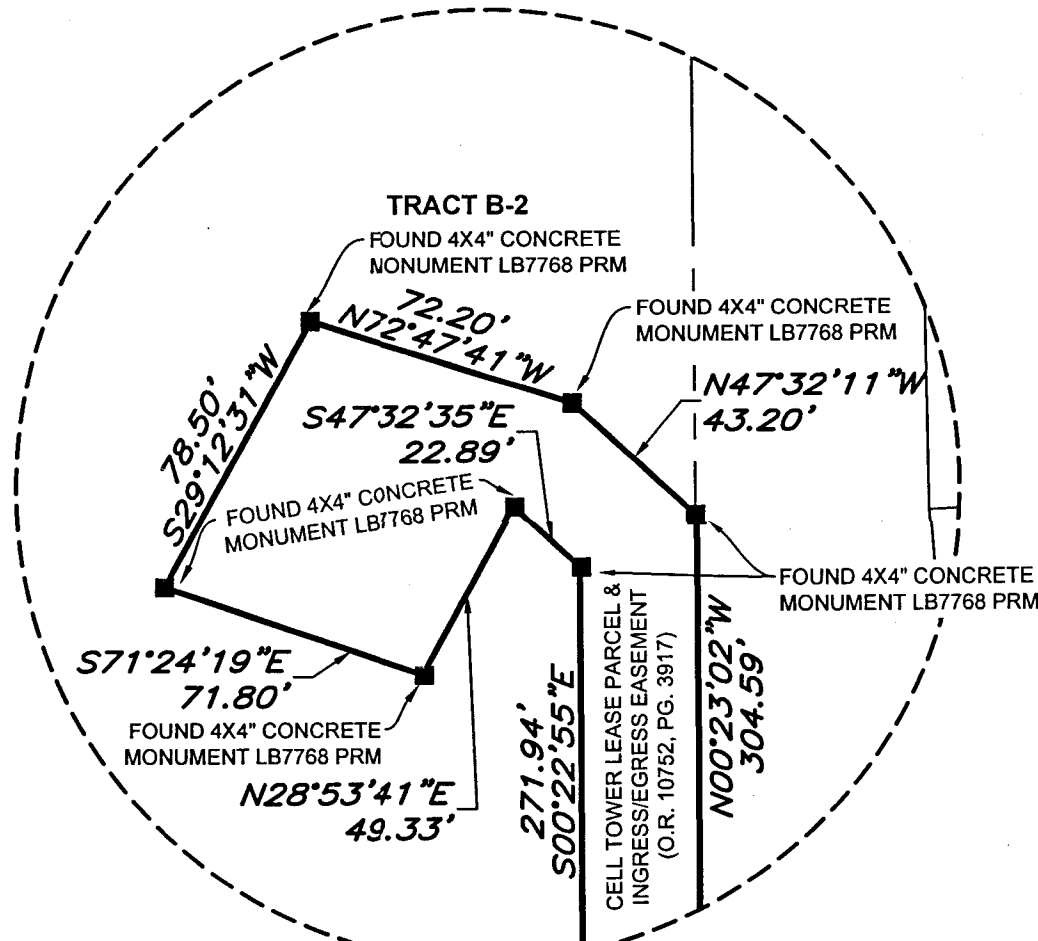
**NOTE:**  
A 1/2 INCH DIAMETER IRON PIPE WITH CAP No. LB7768 WILL BE SET AT EACH LOT CORNER AS REQUIRED BY CHAPTER 177 OF THE FLORIDA STATUTES WITHIN THE TIME ALLOTTED IN 177.091 (9), UNLESS PRIOR MONUMENTATION OF THE LOT CORNER IS FOUND IN PLACE.

**NOTE:** EASEMENTS, BUFFERS AND OTHER SUCH LABELS AND DIMENSIONS OF A PARALLEL NATURE AS SHOWN HEREON AND PARALLEL TO THE NEAREST FOOT (IE: 5' UTILITY EASEMENT) ARE ASSUMED TO BE THE SAME DIMENSION EXTENDED TO THE NEAREST HUNDREDTH OF A FOOT WITH NO GREATER OR LESSER VALUE (IE: 5' = 5.00')

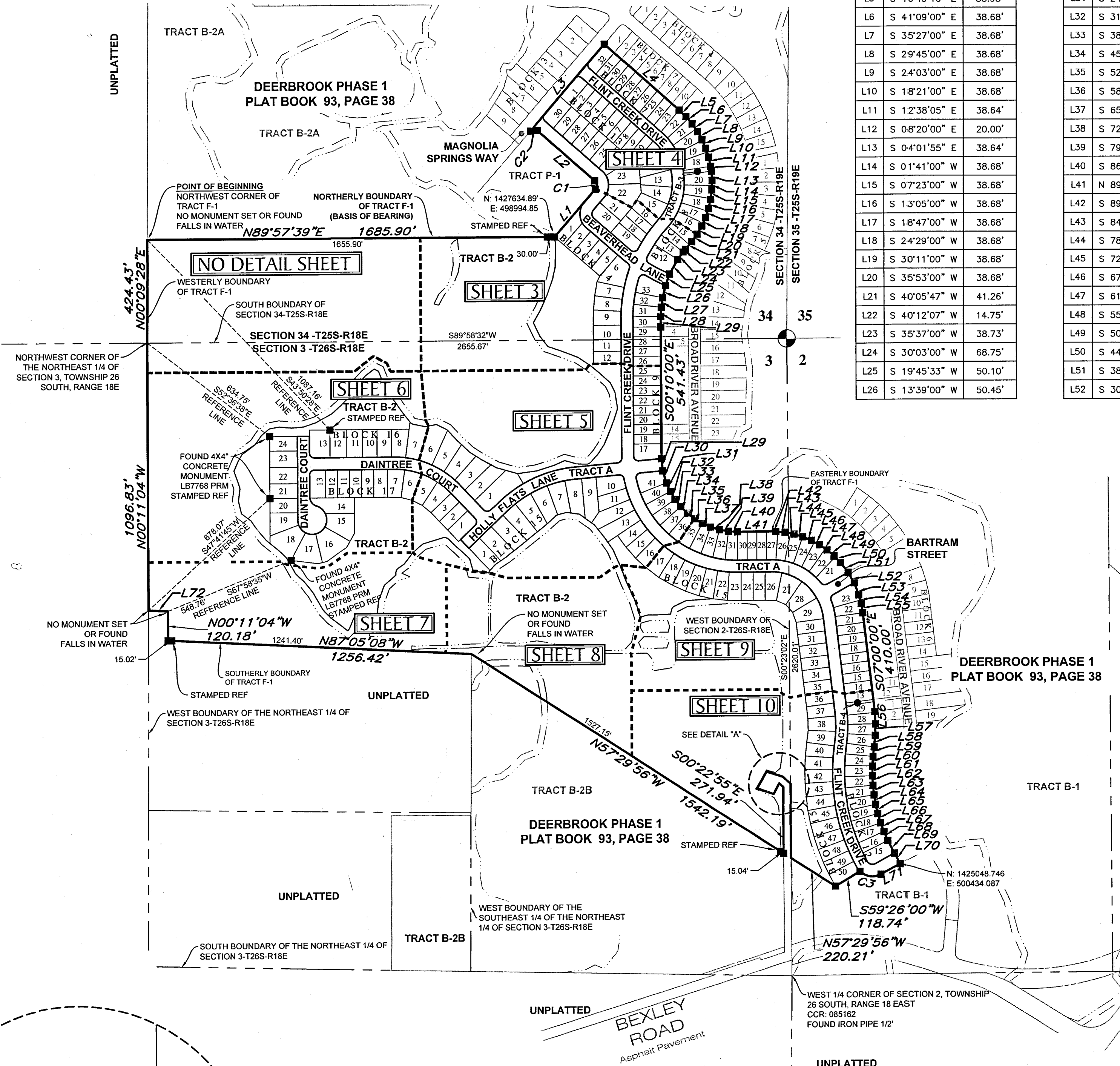
**NOTE:** All platted utility easements shall provide that such easements shall also be easements for the construction, installation, maintenance, and operation of cable television services; provided, however, no such construction, installation, maintenance, and operation of cable television services shall interfere with facilities and services of an electric, telephone, gas, or other public utility. In the event a cable television company damages the facilities of a public utility, it shall be solely responsible for the damages. This section shall apply to those private easements granted to or obtained by a particular electric, telephone, gas, or other public utility. Such construction, installation, maintenance, and operation shall comply with National Electrical Safety Code as adopted by the Florida Public Service Commission.

The coordinate values shown hereon are based on the National Geodetic Survey Control Points and were established to Third Order Class I accuracy as defined by the Standards and Specifications for Geodetic Control Networks, as published by the Federal Geodetic Control Committee dated September, 1984 or latest edition. "T31-122", "T34-135" and "N30124"

- LEGEND:**
- indicates (P.R.M.) Permanent Reference Monument - 4"x4" Concrete Monument LB7768, unless otherwise noted.
  - ⊕ indicates (P.R.M.) Offset Permanent Reference Monument - 4"x4" Concrete Monument LB7768, unless otherwise noted.
  - indicates (P.C.P.) Permanent Control Point LB7768
  - (NR) indicates non-radial line
  - O.R. indicates Official Records Book
  - T.E. indicates Technology Easement



**NOTE:** ALL LINES INTERSECTING A CURVE ARE RADIAL (R) UNLESS OTHERWISE NOTED AS NON-RADIAL (NR).



**LINE DATA TABLE**

NO.	BEARING	LENGTH
L1	N 41°00'00" E	259.00'
L2	N 49°00'00" W	316.00'
L3	N 41°00'00" E	468.00'
L4	S 49°00'00" E	415.00'
L5	S 46°49'16" E	38.93'
L6	S 41°09'00" E	38.68'
L7	S 35°27'00" E	38.68'
L8	S 29°45'00" E	38.68'
L9	S 24°03'00" E	38.68'
L10	S 18°21'00" E	38.68'
L11	S 12°38'05" E	38.64'
L12	S 08°20'00" E	20.00'
L13	S 04°01'55" E	38.64'
L14	S 01°41'00" W	38.68'
L15	S 07°23'00" W	38.68'
L16	S 13°05'00" W	38.68'
L17	S 18°47'00" W	38.68'
L18	S 24°29'00" W	38.68'
L19	S 30°11'00" W	38.68'
L20	S 35°53'00" W	38.68'
L21	S 40°05'47" W	41.26'
L22	S 40°12'07" W	14.75'
L23	S 35°37'00" W	38.73'
L24	S 30°03'00" W	68.75'
L25	S 19°45'33" W	50.10'
L26	S 13°39'00" W	50.45'

**LINE DATA TABLE**

NO.	BEARING	LENGTH
L27	S 08°37'00" W	38.73'
L28	S 03°35'00" W	38.73'
L29	S 05°37'43" E	50.00'
L30	S 17°22'00" E	52.67'
L31	S 24°18'00" E	38.22'
L32	S 31°14'00" E	38.22'
L33	S 38°10'00" E	38.22'
L34	S 45°06'00" E	38.22'
L35	S 52°02'00" E	38.22'
L36	S 58°58'00" E	38.22'
L37	S 65°54'00" E	38.22'
L38	S 72°50'00" E	38.22'
L39	S 79°46'00" E	38.22'
L40	S 86°42'00" E	38.22'
L41	N 89°50'00" E	120.00'
L42	S 89°27'07" E	39.43'
L43	S 84°24'00" E	38.41'
L44	S 78°40'00" E	38.41'
L45	S 72°56'00" E	38.41'
L46	S 67°12'00" E	38.41'
L47	S 61°28'00" E	38.41'
L48	S 55°44'00" E	38.41'
L49	S 50°00'00" E	38.41'
L50	S 44°16'00" E	38.41'
L51	S 38°32'00" E	51.53'
L52	S 30°03'47" E	50.02'

**LINE DATA TABLE**

NO.	BEARING	LENGTH
L53	S 21°20'00" E	52.29'
L54	S 15°36'00" E	38.41'
L55	S 09°52'00" E	38.41'
L56	S 02°43'11" E	51.05'
L57	S 01°22'00" W	47.35'
L58	S 05°36'00" W	47.35'
L59	S 07°08'41" W	39.15'
L60	S 03°45'00" W	39.15'
L61	S 00°15'00" W	39.15'
L62	S 03°45'00" E	39.15'
L63	S 06°45'50" E	39.46'
L64	S 10°17'30" E	39.46'
L65	S 13°49'10" E	39.46'
L66	S 17°20'50" E	39.46'
L67	S 20°52'30" E	39.46'
L68	S 24°24'10" E	39.46'
L69	S 27°55'50" E	58.68'
L70	S 28°17'00" E	50.00'
L71	S 61°43'00" W	91.01'
L72	N 87°05'08" W	80.12'

**CURVE DATA TABLE**

NO.	RADIUS	DELTA	ARC	CHORD	BEARING
C1	25.00'	90°00'00"	39.27'	35.36'	N 04°00'00" W
C2	20.00'	90°00'00"	31.42'	28.28'	S 86°00'00" W
C3	74.90'	73°01'03"	95.46'	89.13'	N 81°49'45" W

**TRACT DESIGNATION TABLE**

TRACT	DESCRIPTION	ACRES
TRACT A	(CDD) RIGHT-OF-WAY, DRAINAGE EASEMENT, AND (PUBLIC) UTILITY EASEMENT	8.59 ACRES
TRACT B-2	(CDD) DRAINAGE, LANDSCAPE AREA, AND OPEN SPACE AREA, AND WETLAND CONSERVATION AREA	70.84 ACRES
TRACT B-3	(CDD) DRAINAGE, ACCESS, LANDSCAPE EASEMENT AND OPEN SPACE AREA	0.05 ACRES
TRACT B-4	(CDD) DRAINAGE, ACCESS, LANDSCAPE EASEMENT AND OPEN SPACE AREA	0.03 ACRES

**BASIS OF BEARINGS**

The Northerly boundary of Tract F-1 of DEERBROOK PHASE 1, as recorded of Plat Book 93, Page 98 of the Public Records of Pasco County, Florida, has a Grid bearing of N.89°57'39"E. The Grid bearings as shown hereon refer to the State Plane Coordinate System (NAD 83-1990 ADJUSTMENT) for the West Zone of Florida.

**WETLAND CONSERVATION AREA NOTE:**

Wetland Conservation Areas as shown hereon may be subject to certain restrictions found in: Pasco County Land Development Code, Southwest Florida Water Management District (S.W.F.W.M.D.) Environmental Resource Permit, and/or the United States Army Corps of Engineers (C.O.E.) Permit.

**KEY SHEET**

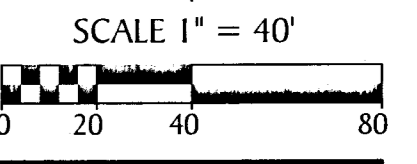
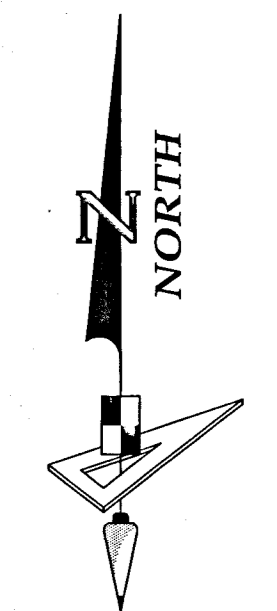
NOTE: REFER TO THE FOLLOWING SHEETS OF THIS PLAT FOR DETAILED LABELING AND DIMENSIONING.



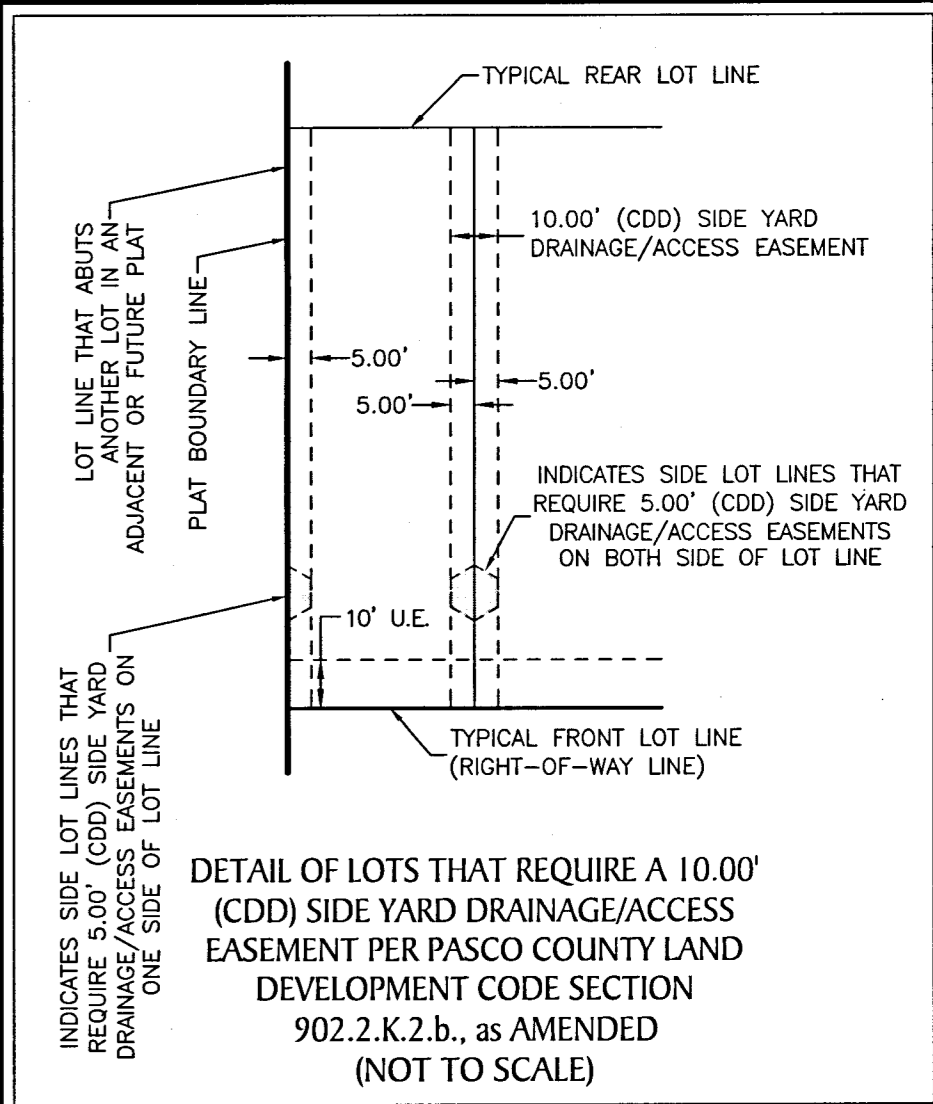
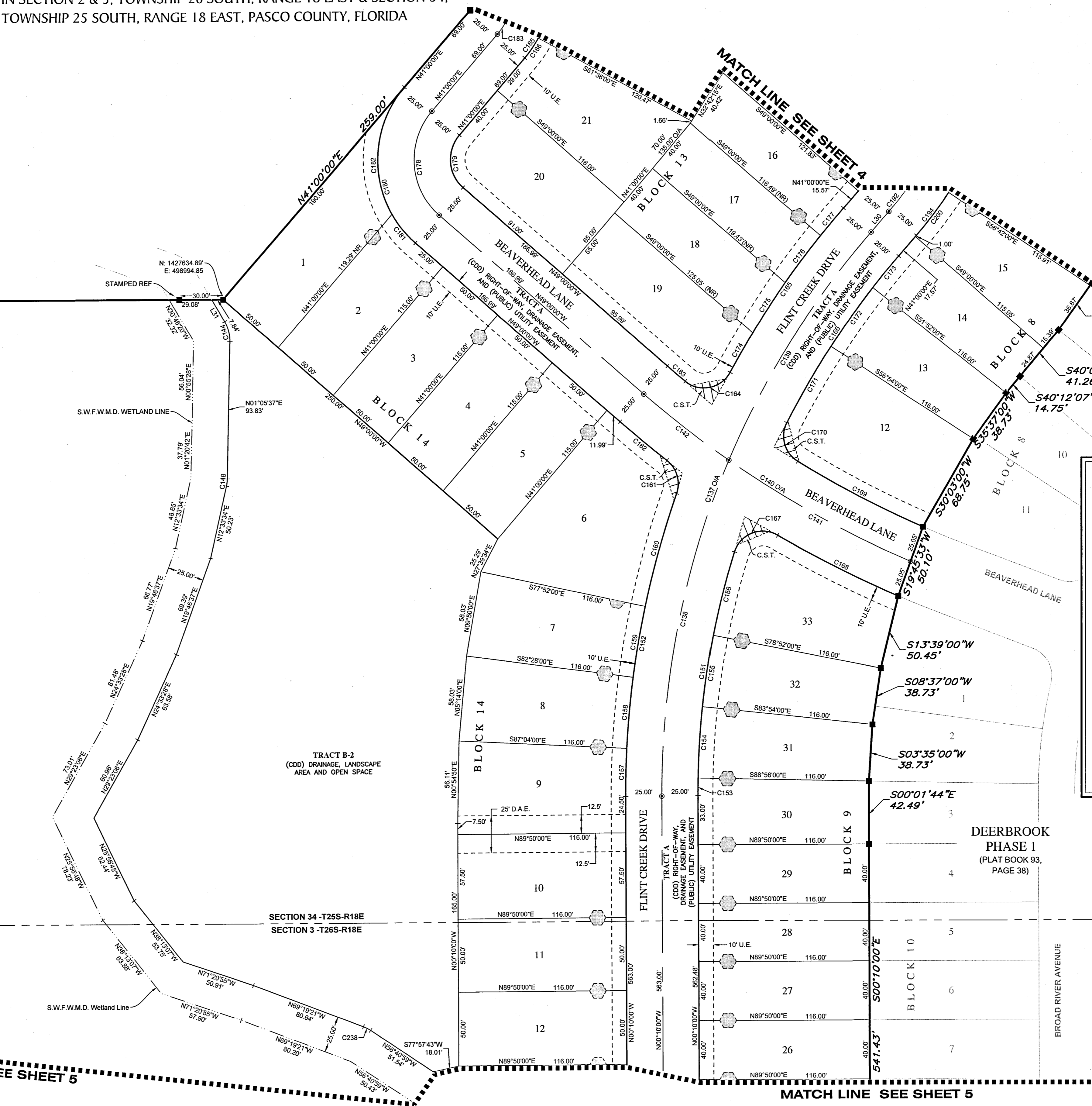
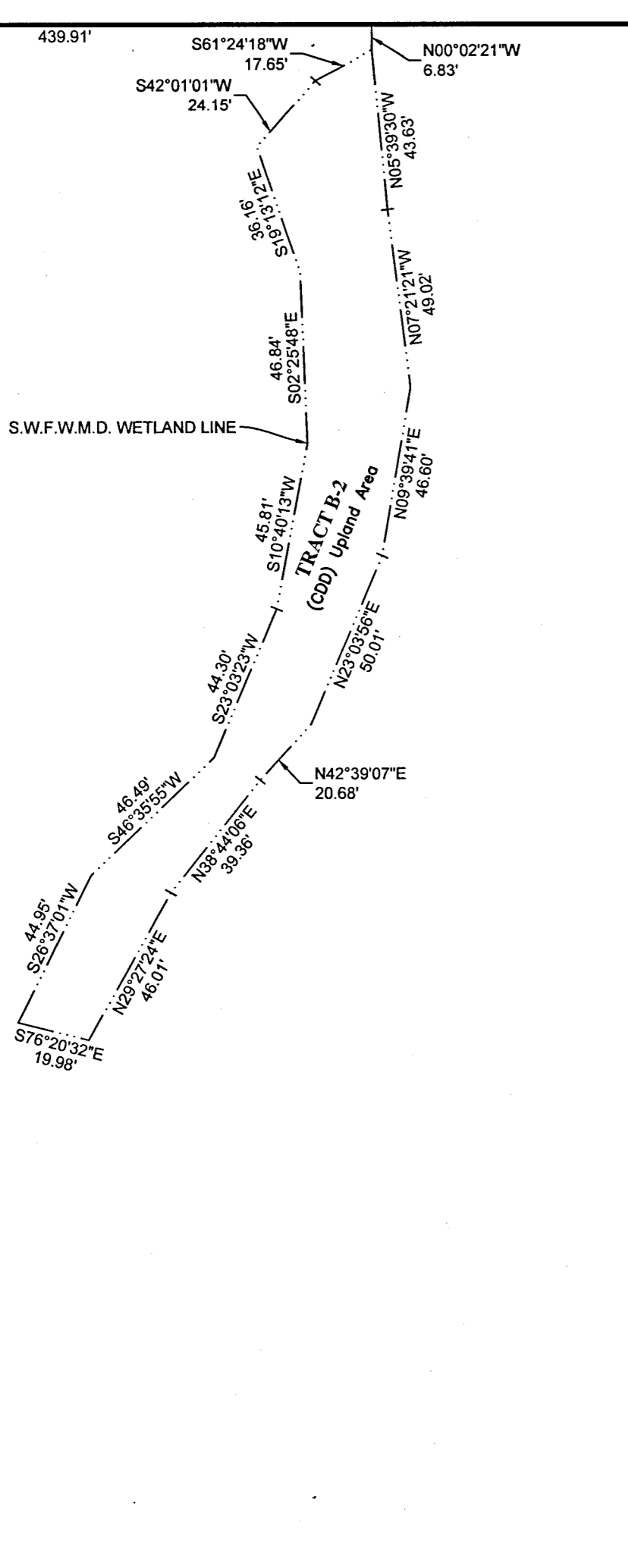
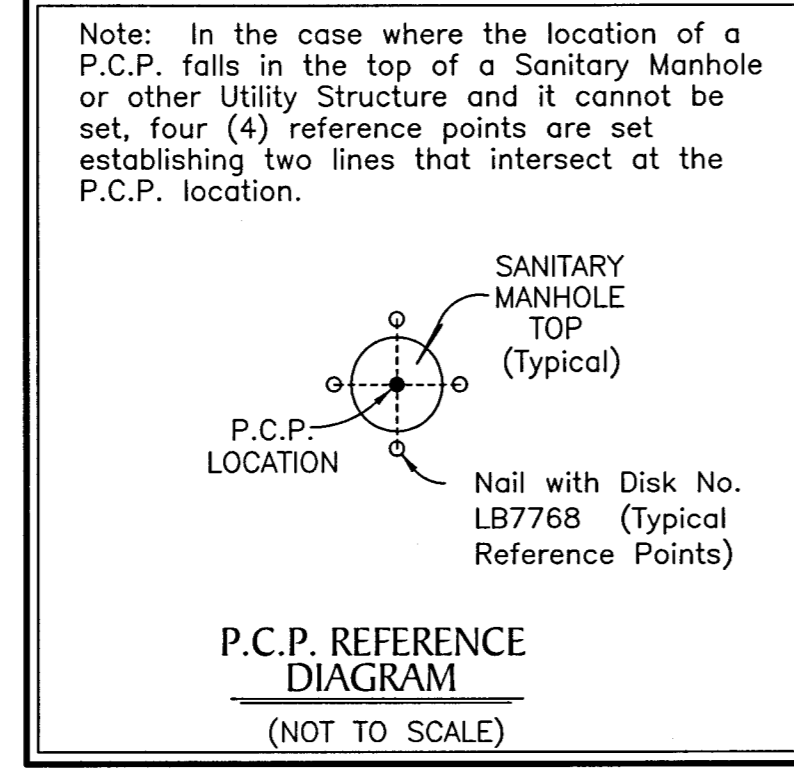
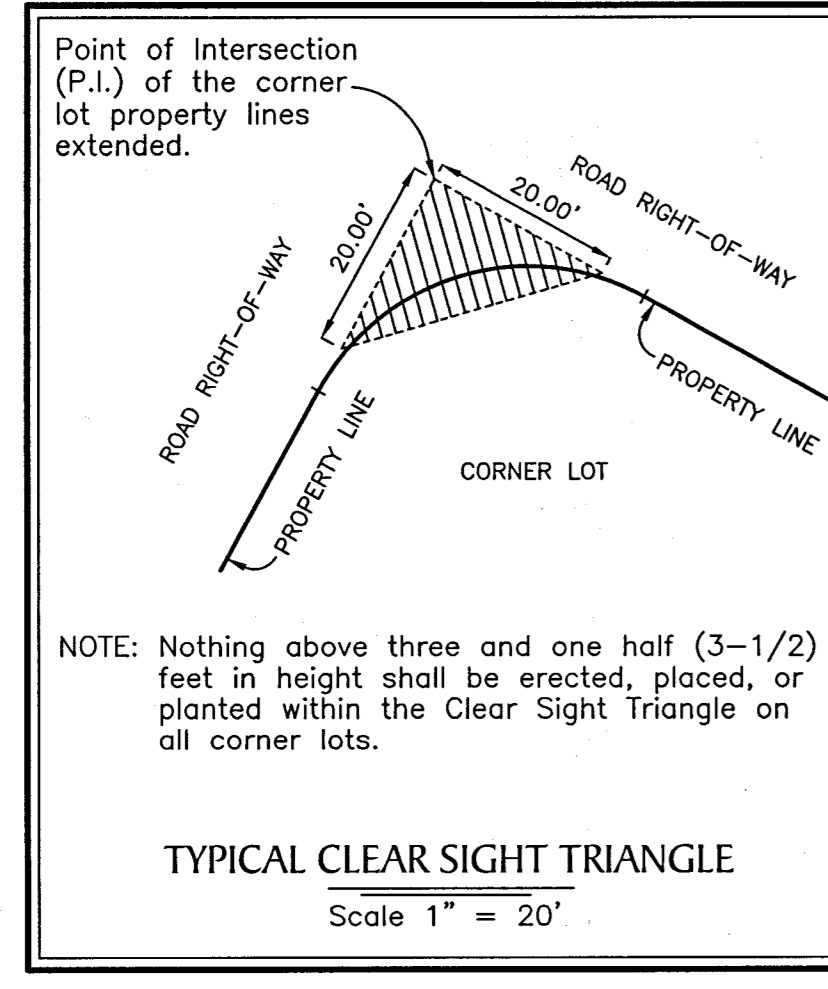
213 Hobbs Street  
Tampa, Florida 33619  
www.geopointsurvey.com  
Phone: (813) 248-8888  
Fax: (813) 248-2266  
Licensed Business Number LB 7768

# DEERBROOK, PHASE 2

A REPLAT OF TRACT F-1 OF DEERBROOK, PHASE 1. PLAT BOOK 93, PAGE 38,  
 LYING IN SECTION 2 & 3, TOWNSHIP 26 SOUTH, RANGE 18 EAST & SECTION 34,  
 TOWNSHIP 25 SOUTH, RANGE 18 EAST, PASCO COUNTY, FLORIDA



SEE NOTE ON SHEET 2 OF 10 FOR BASIS OF BEARINGS



LINE DATA TABLE

NO.	BEARING	LENGTH
L30	N 41°00'00" E	18.57'
L31	S 30°46'20" E	17.45'

CURVE DATA TABLE

NO.	RADIUS	DELTA	ARC	CHORD	BEARING
C137	582.00'	41°10'00"	418.16'	409.23'	S 20°25'00" W
C138	582.00'	23°05'41"	234.59'	233.01'	S 11°22'51" W
C139	582.00'	18°04'19"	183.57'	182.81'	S 31°57'51" W
C140	700.00'	17°39'26"	215.72'	214.87'	S 57°49'43" E
C141	700.00'	11°36'44"	141.87'	141.63'	S 60°51'04" E
C142	700.00'	6°02'42"	73.85'	73.82'	S 52°01'21" E
C144	25.00'	31°51'57"	13.90'	13.73'	N 14°50'21" E
C148	25.00'	11°27'56"	5.00'	4.99'	N 06°49'35" E

CURVE DATA TABLE

NO.	RADIUS	DELTA	ARC	CHORD	BEARING
C151	557.00'	17°20'14"	168.54'	167.90'	S 08°30'07" W
C152	607.00'	19°49'27"	210.02'	208.97'	S 09°44'43" W
C153	557.00'	1°14'00"	11.99'	11.99'	S 00°27'00" W
C154	557.00'	5°02'00"	48.93'	48.92'	S 03°35'00" W
C155	557.00'	5°02'00"	48.93'	48.92'	S 08°37'00" W
C156	557.00'	6°02'14"	58.69'	58.66'	S 14°09'07" W
C157	607.00'	3°06'00"	32.84'	32.84'	S 01°23'00" W
C158	607.00'	4°36'00"	48.73'	48.72'	S 05°14'00" W

CURVE DATA TABLE

NO.	RADIUS	DELTA	ARC	CHORD	BEARING
C160	607.00'	4°36'00"	48.73'	48.72'	S 09°50'00" W
C161	607.00'	7°31'27"	79.71'	79.65'	S 15°53'43" W
C162	20.00'	71°58'00"	25.12'	23.50'	N 16°19'33" W
C162	725.00'	3°18'33"	41.87'	41.87'	S 50°39'17" E
C163	675.00'	1°22'13"	16.14'	16.14'	S 49°41'07" E
C164	20.00'	101°27'40"	35.42'	30.97'	N 78°53'57" E
C165	607.00'	12°49'54"	135.94'	135.66'	S 34°35'03" W
C166	557.00'	14°05'41"	137.02'	136.68'	S 33°57'10" W

CURVE DATA TABLE

NO.	RADIUS	DELTA	ARC	CHORD	BEARING
C167	20.00'	103°19'41"	36.07'	31.38'	S 68°50'04" W
C168	725.00'	7°16'46"	92.11'	92.05'	S 63°08'28" E
C169	675.00'	8°11'45"	96.55'	96.47'	S 62°25'35" E
C170	20.00'	85°14'02"	29.75'	27.08'	S 15°42'42" E
C171	557.00'	6°11'41"	60.22'	60.19'	S 30°00'10" W
C172	557.00'	5°02'00"	48.93'	48.92'	S 35°37'00" W
C173	557.00'	2°52'00"	27.87'	27.87'	S 39°34'00" W
C174	607.00'	2°55'28"	30.98'	30.98'	S 29°37'51" W

CURVE DATA TABLE

NO.	RADIUS	DELTA	ARC	CHORD	BEARING
C175	607.00'	3°48'49"	40.40'	40.39'	S 32°59'59" W
C176	607.00'	3°47'11"	40.12'	40.11'	S 36°47'59" W
C177	607.00'	2°18'25"	24.44'	24.44'	S 39°50'47" W
C178	50.00'	90°00'00"	78.54'	70.71'	S 04°00'00" E
C179	25.00'	90°00'00"	39.27'	35.36'	S 04°00'00" E
C180	75.00'	90°00'00"	117.81'	106.07'	S 04°00'00" E
C181	75.00'	19°28'16"	25.49'	25.37'	S 39°15'52" E
C182	75.00'	70°31'44"	92.32'	86.60'	S 05°44'08" W

CURVE DATA TABLE

NO.	RADIUS	DELTA	ARC	CHORD	BEARING
C183	50.00'	90°00'00"	78.54'	70.71'	N 04°00'00" W
C185	75.00'	90°00'00"	117.81'	106.07'	N 04°00'00" W
C186	75.00'	12°36'00"	16.49'	16.46'	N 34°42'00" E
C192	248.00'	90°00'00"	389.56'	350.72'	N 04°00'00" W
C194	273.00'	90°00'00"	428.83'	386.08'	N 04°00'00" W
C200	273.00'	7°42'00"	36.69'	36.66'	N 37°09'00" E
C238	25.00'	12°38'22"	5.51'	5.50'	N 63°00'10" W

**LEGEND:**

- Indicates (P.R.M.) Permanent Reference Monument - 4"x4" Concrete Monument LB7768, unless otherwise noted.
- Indicates (P.R.M.) Offset Permanent Reference Monument - 4"x4" Concrete Monument LB7768, unless otherwise noted.
- Indicates (P.C.P.) Permanent Control Point LB7768
- D.A.E. --- Drainage & Access Easement
- S.W.F.W.M.D. --- Southwest Florida Water Management District
- C.S.T. --- Clear Sight Triangle
- O/A --- Overall
- U.E. --- Utility Easement
- NR --- Non-Radial

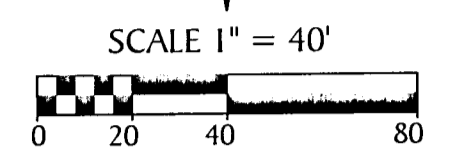
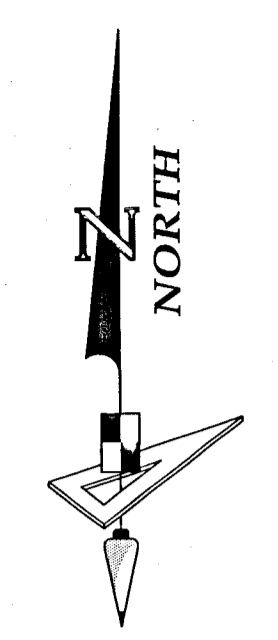
213 Hobbs Street  
 Tampa, Florida 33619  
 www.geopointsurvey.com  
 Phone: (813) 248-8888  
 Fax: (813) 248-2266  
 Licensed Business Number LB 7768

**GeoPoint**  
 Surveying, Inc.

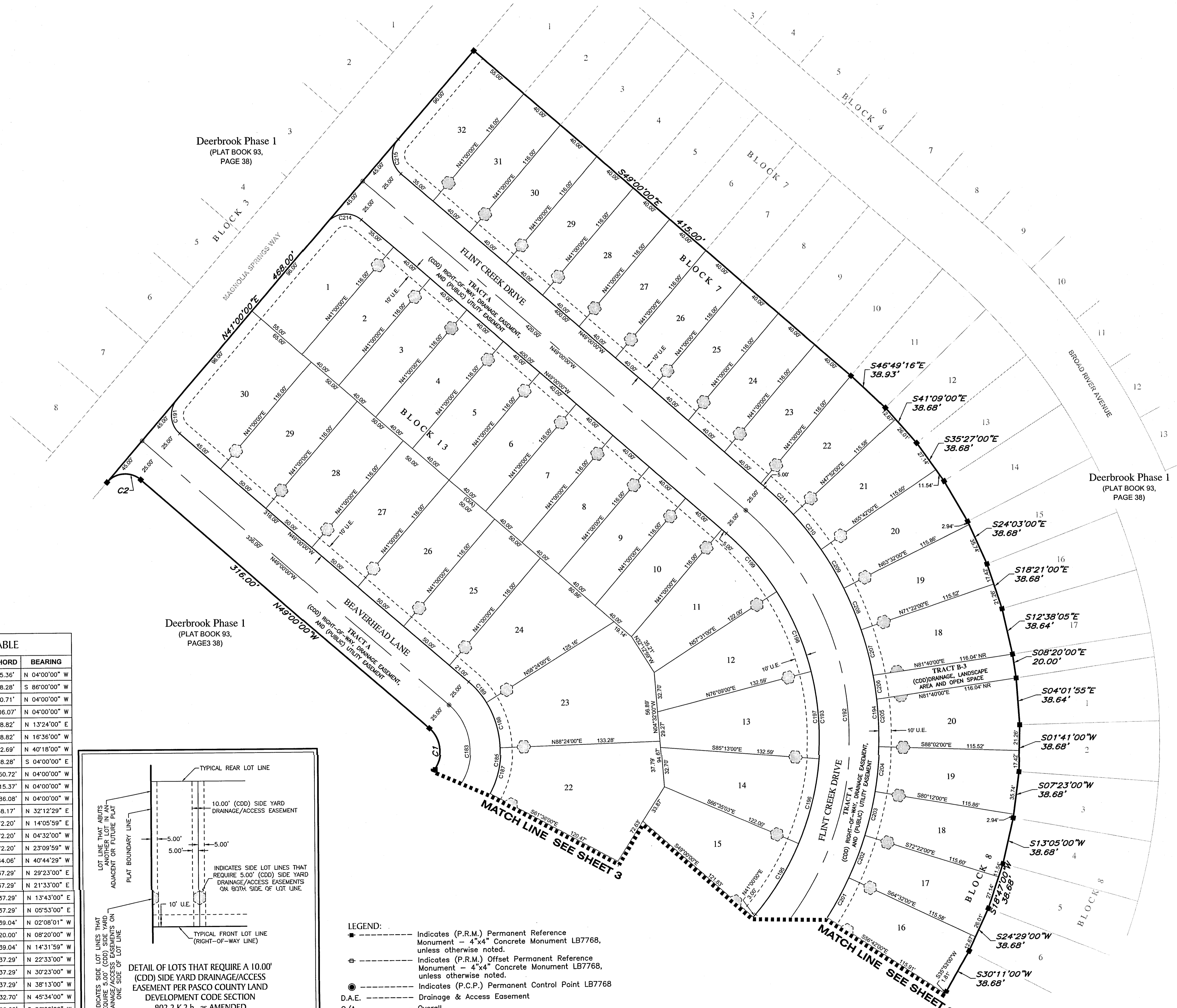
**SHEET 3 OF 10 SHEETS**

# DEERBROOK, PHASE 2

A REPLAT OF TRACT F-1 OF DEERBROOK, PHASE 1. PLAT BOOK 93, PAGE 38,  
LYING IN SECTION 2 & 3, TOWNSHIP 26 SOUTH, RANGE 18 EAST & SECTION 34,  
TOWNSHIP 25 SOUTH, RANGE 18 EAST, PASCO COUNTY, FLORIDA

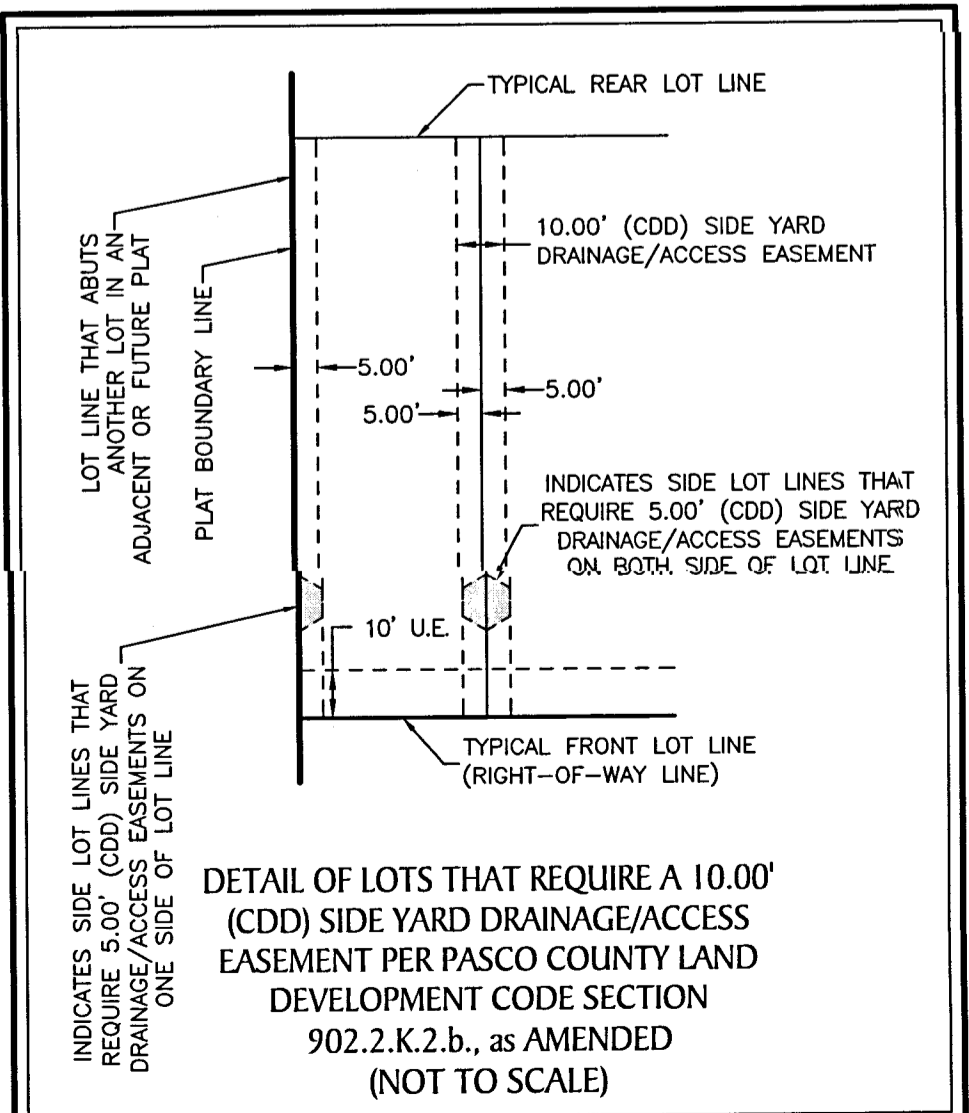


SEE NOTE ON SHEET 2 OF 10 FOR BASIS OF BEARINGS

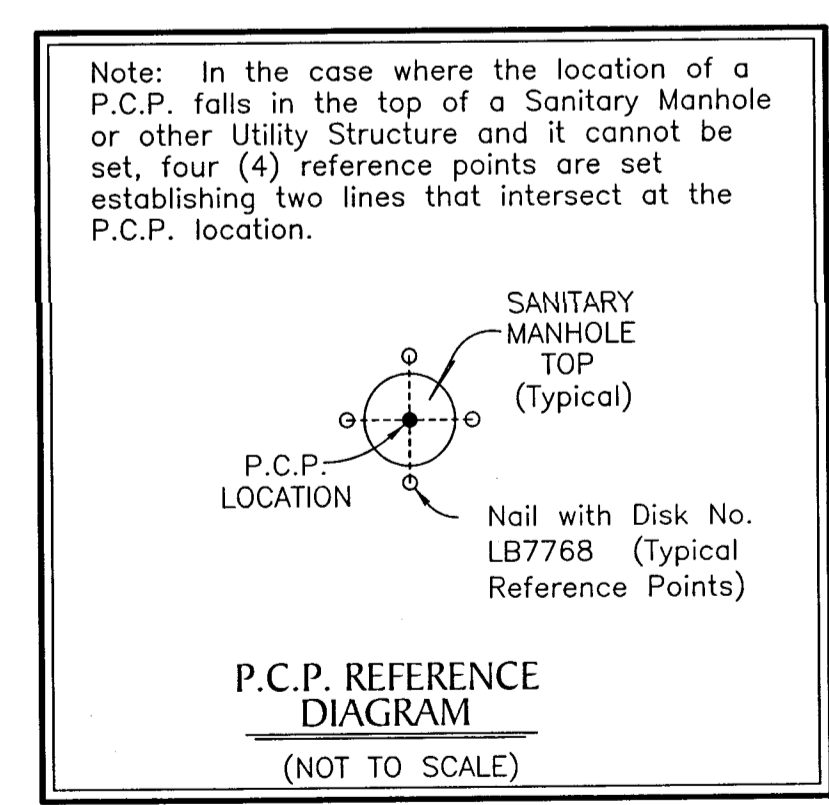
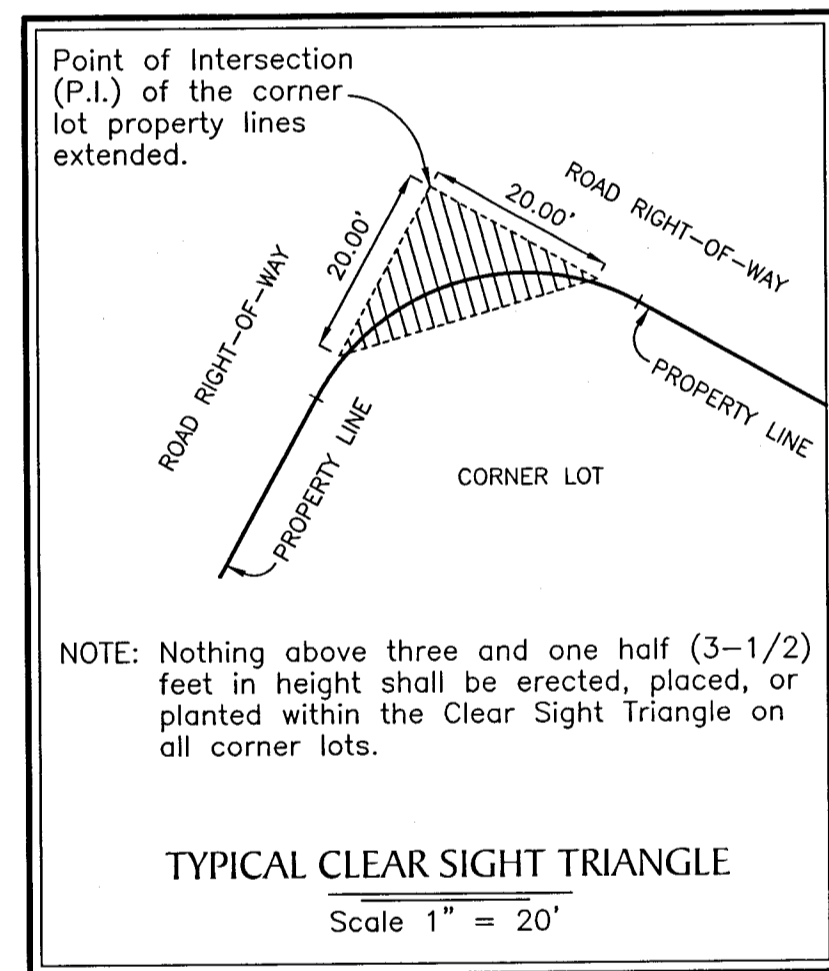


CURVE DATA TABLE

NO.	RADIUS	DELTA	ARC	CHORD	BEARING
C1	25.00'	90°00'00"	39.27'	35.36'	N 04°00'00" W
C2	20.00'	90°00'00"	31.42'	28.28'	S 86°00'00" W
C183	50.00'	90°00'00"	78.54'	70.71'	N 04°00'00" W
C185	75.00'	90°00'00"	117.81'	106.07'	N 04°00'00" W
C187	75.00'	30°00'00"	39.27'	38.82'	N 13°24'00" E
C188	75.00'	30°00'00"	39.27'	38.82'	N 16°38'00" W
C189	75.00'	17°24'00"	22.78'	22.69'	N 40°18'00" W
C191	20.00'	90°00'00"	31.42'	28.28'	S 04°00'00" E
C192	248.00'	90°00'00"	389.56'	350.72'	N 04°00'00" W
C193	223.00'	90°00'00"	350.29'	315.37'	N 04°00'00" W
C194	273.00'	90°00'00"	428.83'	386.08'	N 04°00'00" W
C195	223.00'	17°35'03"	68.44'	68.17'	N 32°12'29" E
C196	223.00'	16°37'57"	72.52'	72.20'	N 14°05'59" E
C197	223.00'	18°38'00"	72.52'	72.20'	N 04°32'00" W
C198	223.00'	18°37'59"	72.52'	72.20'	N 23°09'59" W
C199	223.00'	16°31'01"	64.29'	64.06'	N 40°44'29" W
C201	273.00'	7°50'00"	37.32'	37.29'	N 29°23'00" E
C202	273.00'	7°50'00"	37.32'	37.29'	N 21°33'00" E
C203	273.00'	7°50'00"	37.32'	37.29'	N 13°43'00" E
C204	273.00'	7°50'00"	37.32'	37.29'	N 05°53'00" E
C205	273.00'	8°12'03"	39.07'	39.04'	N 02°08'01" W
C206	273.00'	4°11'54"	20.00'	20.00'	N 08°20'00" W
C207	273.00'	8°12'03"	39.07'	39.04'	N 14°31'59" W
C208	273.00'	7°50'00"	37.32'	37.29'	N 22°33'00" W
C209	273.00'	7°50'00"	37.32'	37.29'	N 30°23'00" W
C210	273.00'	7°50'00"	37.32'	37.29'	N 38°13'00" W
C211	273.00'	6°52'00"	32.72'	32.70'	N 45°34'00" W
C214	20.00'	90°00'00"	31.42'	28.28'	S 86°00'00" W
C215	20.00'	90°00'00"	31.42'	28.28'	S 04°00'00" E



- LEGEND:
- Indicates (P.R.M.) Permanent Reference Monument - 4"x4" Concrete Monument LB7768, unless otherwise noted.
  - ⊕ Indicates (P.R.M.) Offset Permanent Reference Monument - 4"x4" Concrete Monument LB7768, unless otherwise noted.
  - Indicates (P.C.P.) Permanent Control Point LB7768
  - D.A.E. --- Drainage & Access Easement
  - O/A --- Overall
  - NR --- Non-Radial



DEERBROOK, PHASE 2
A REPLAT OF TRACT F-1 OF DEERBROOK, PHASE 1. PLAT BOOK 93, PAGE 38,
LYING IN SECTION 2 & 3, TOWNSHIP 26 SOUTH, RANGE 18 EAST & SECTION 34,
TOWNSHIP 25 SOUTH, RANGE 18 EAST, PASCO COUNTY, FLORIDA

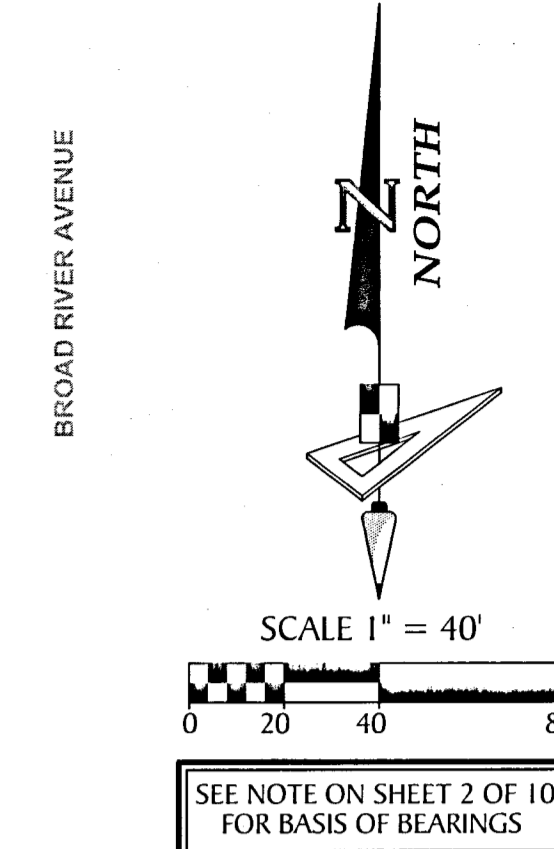
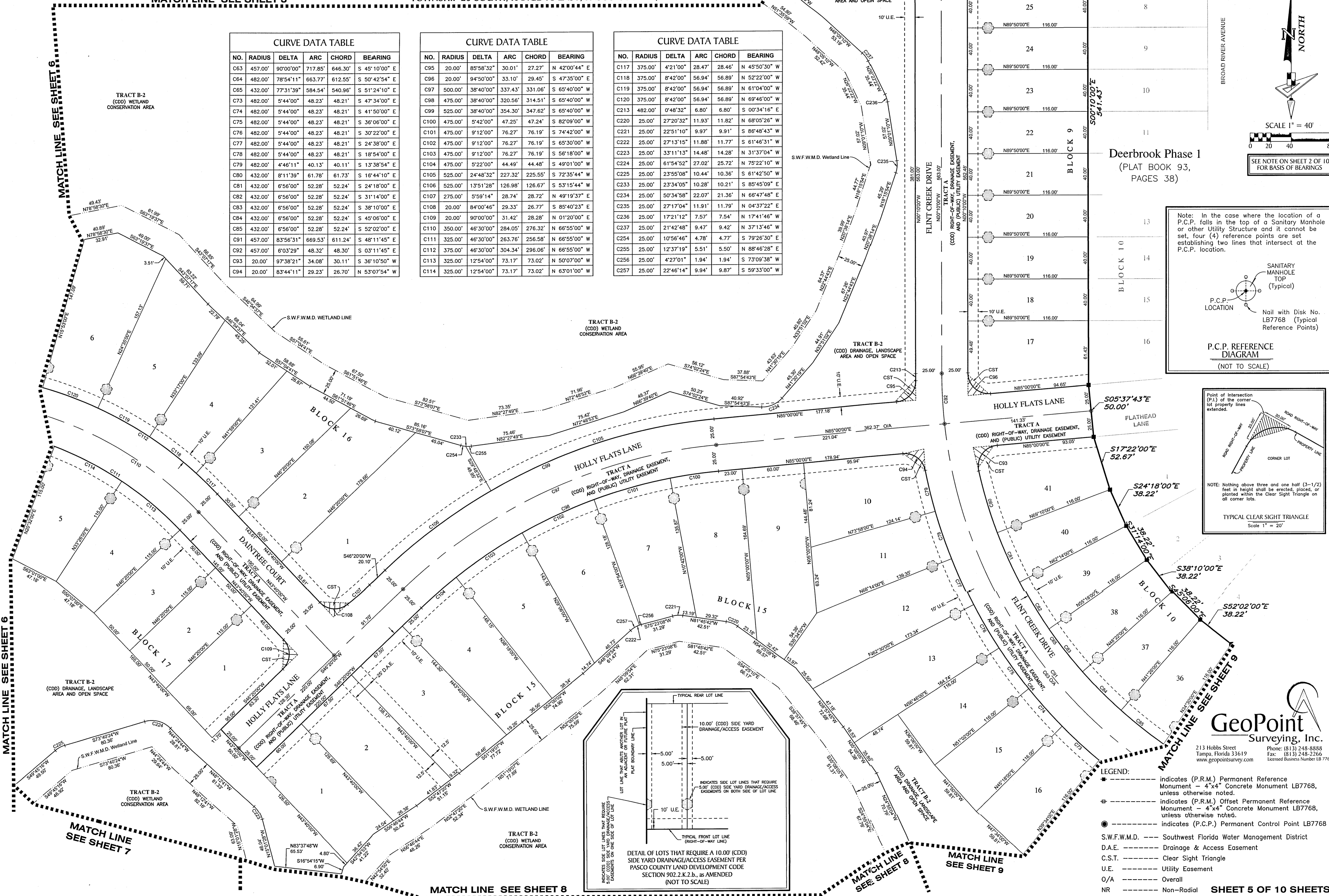
MATCH LINE SEE SHEET 3

MATCH LINE SEE SHEET 3

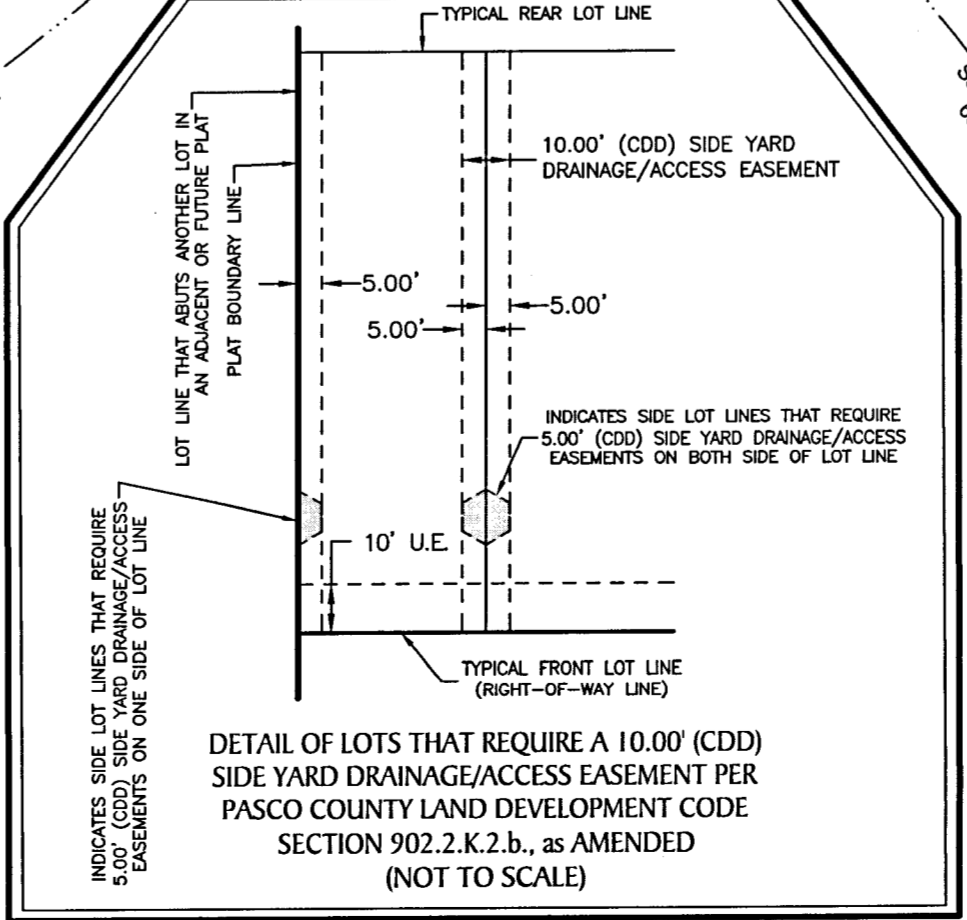
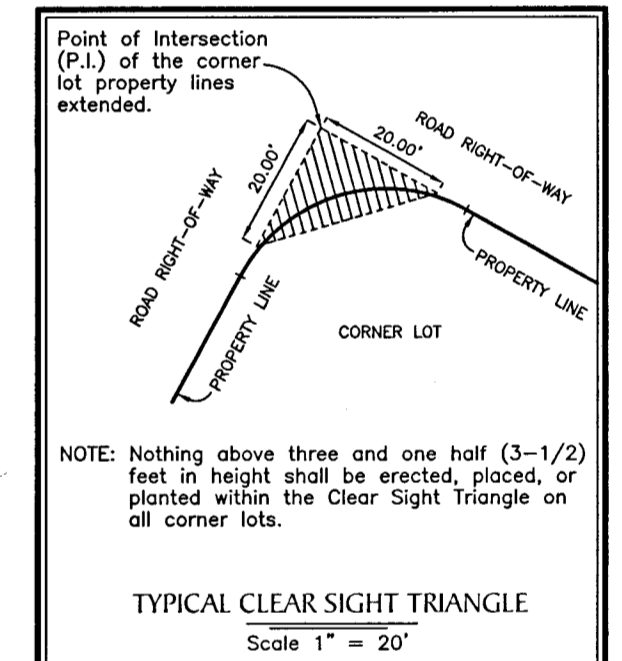
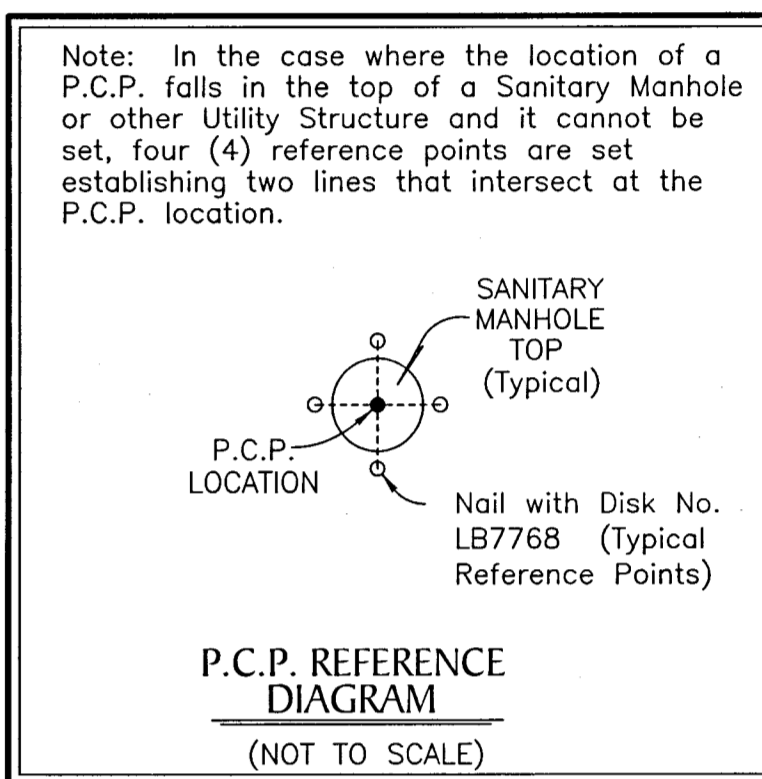
CURVE DATA TABLE with columns: NO., RADIUS, DELTA, ARC, CHORD, BEARING. Rows C63 to C94.

CURVE DATA TABLE with columns: NO., RADIUS, DELTA, ARC, CHORD, BEARING. Rows C95 to C114.

CURVE DATA TABLE with columns: NO., RADIUS, DELTA, ARC, CHORD, BEARING. Rows C117 to C257.



Deerbrook Phase 1 (PLAT BOOK 93, PAGES 38)

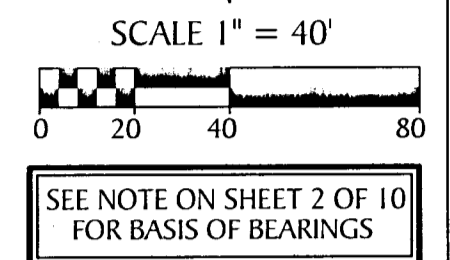
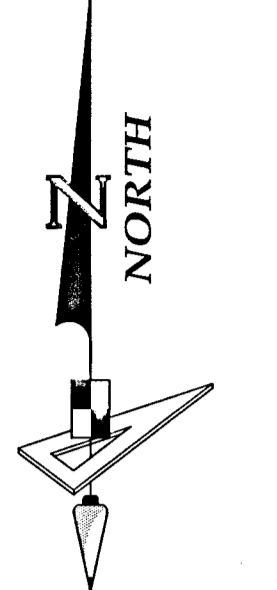


- LEGEND:
- indicates (P.R.M.) Permanent Reference Monument - 4"x4" Concrete Monument LB7768, unless otherwise noted.
- indicates (P.R.M.) Offset Permanent Reference Monument - 4"x4" Concrete Monument LB7768, unless otherwise noted.
- indicates (P.C.P.) Permanent Control Point LB7768
S.W.F.W.M.D. --- Southwest Florida Water Management District
D.A.E. --- Drainage & Access Easement
C.S.T. --- Clear Sight Triangle
U.E. --- Utility Easement
O/A --- Overall
NR --- Non-Radial

GeoPoint Surveying, Inc.
213 Hobbs Street Tampa, Florida 33619
Phone: (813) 248-8888 Fax: (813) 248-2266
www.geopointsurvey.com Licensed Business Number LB 7768

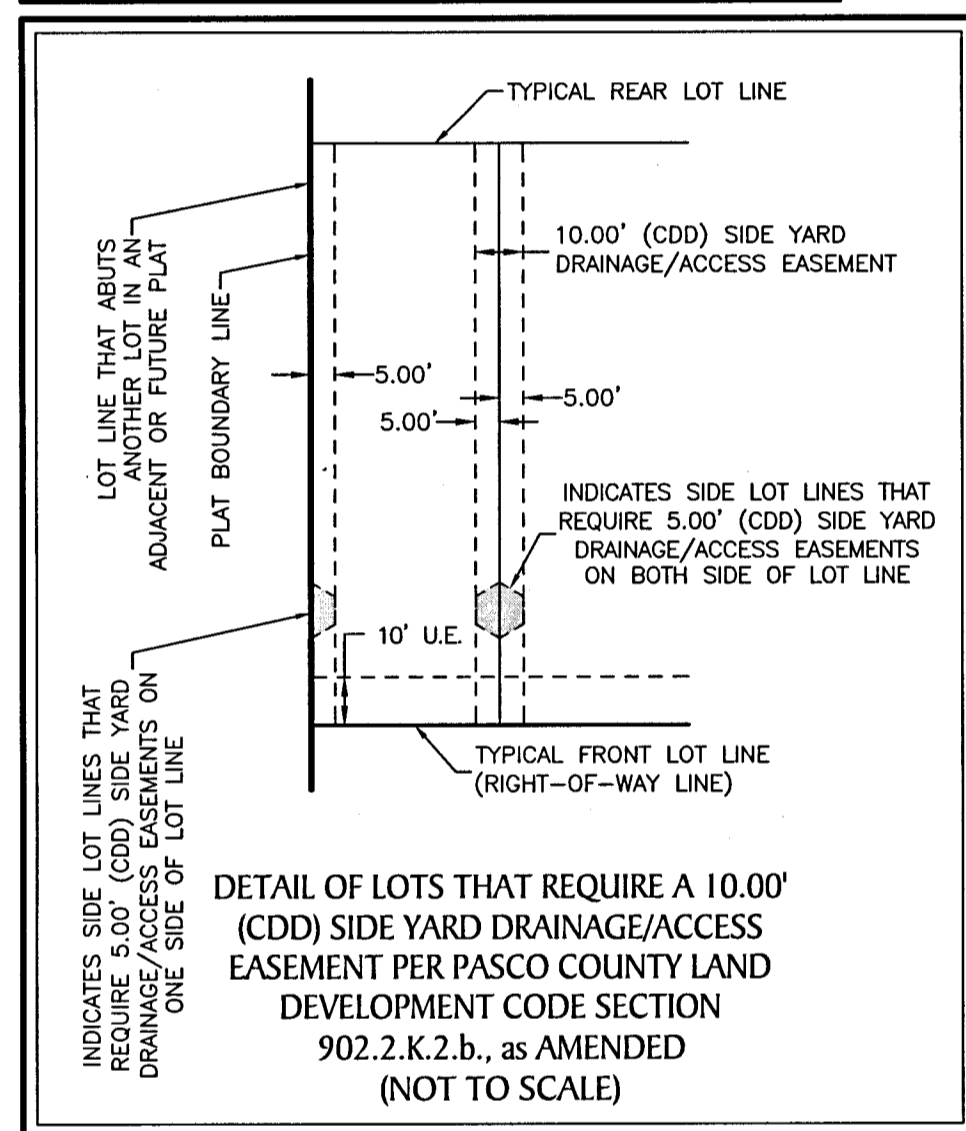
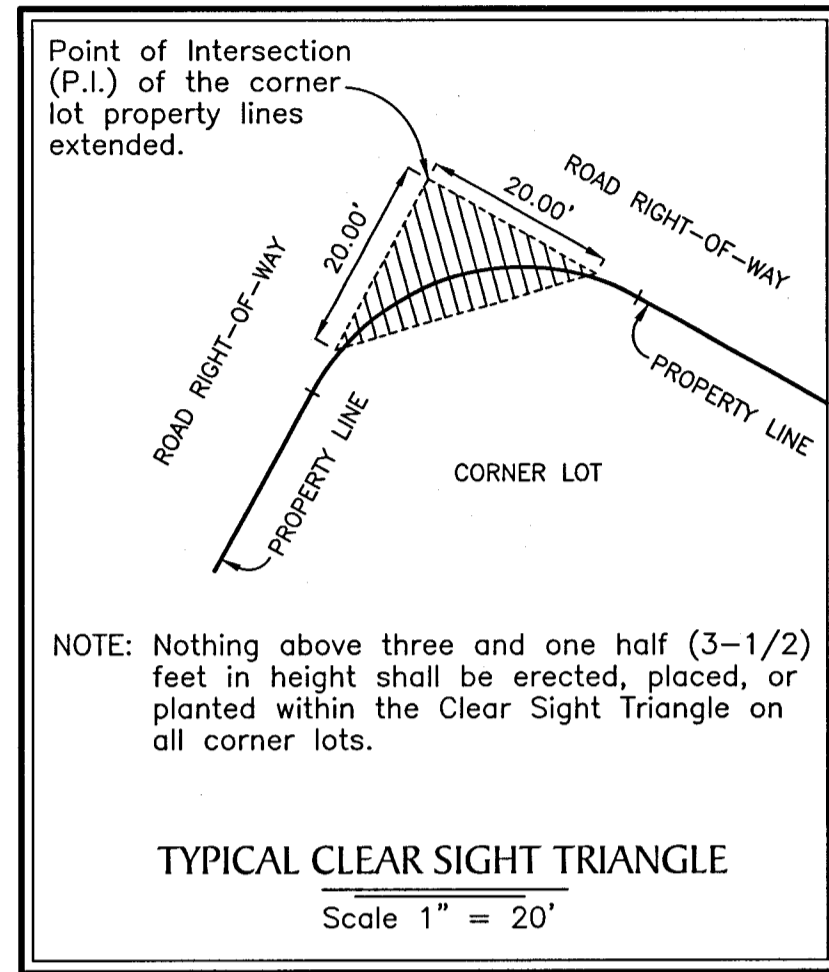
# DEERBROOK, PHASE 2

A REPLAT OF TRACT F-1 OF DEERBROOK, PHASE 1. PLAT BOOK 93, PAGE 38,  
LYING IN SECTION 2 & 3, TOWNSHIP 26 SOUTH, RANGE 18 EAST & SECTION 34,  
TOWNSHIP 25 SOUTH, RANGE 18 EAST, PASCO COUNTY, FLORIDA



MATCH LINE NO DETAIL SHEET

MATCH LINE NO DETAIL SHEET



NO.	RADIUS	DELTA	ARC	CHORD	BEARING
C110	350.00'	46°30'00"	284.05'	276.32'	N 66°55'00" W
C111	325.00'	46°30'00"	263.76'	256.58'	N 66°55'00" W
C112	375.00'	46°30'00"	304.34'	296.06'	N 66°55'00" W
C115	325.00'	12°54'00"	73.17'	73.02'	N 75°55'00" W
C116	325.00'	7°48'00"	44.24'	44.21'	N 86°16'00" W
C121	375.00'	8°42'00"	56.94'	56.89'	N 78°28'00" W
C122	375.00'	7°21'00"	48.11'	48.07'	N 86°29'30" W
C123	20.00'	90°00'00"	31.42'	28.28'	S 44°50'00" W
C124	20.00'	90°00'00"	31.42'	28.28'	S 45°10'00" E
C125	40.00'	72°32'33"	50.64'	47.33'	S 36°28'16" E
C126	60.00'	252°32'33"	264.46'	96.75'	N 53°33'44" E
C127	40.00'	7°44'59"	5.41'	5.41'	S 04°02'30" E
C128	40.00'	64°47'33"	45.23'	42.86'	S 40°18'46" E
C129	60.00'	47°55'05"	50.18'	48.73'	N 48°45'00" W
C130	60.00'	42°25'59"	44.44'	43.43'	N 03°34'28" W
C133	60.00'	34°47'31"	36.43'	35.88'	N 59°05'14" E
C134	60.00'	41°34'00"	43.53'	42.58'	S 82°44'00" E
C135	60.00'	41°34'00"	43.53'	42.58'	S 41°10'00" E
C136	60.00'	20°13'00"	21.17'	21.06'	S 10°16'30" E
C230	25.00'	27°05'28"	11.82'	11.71'	N 06°06'16" W
C231	25.00'	41°28'09"	18.09'	17.70'	S 58°10'51" E
C232	25.00'	22°06'35"	9.65'	9.59'	S 89°58'13" E

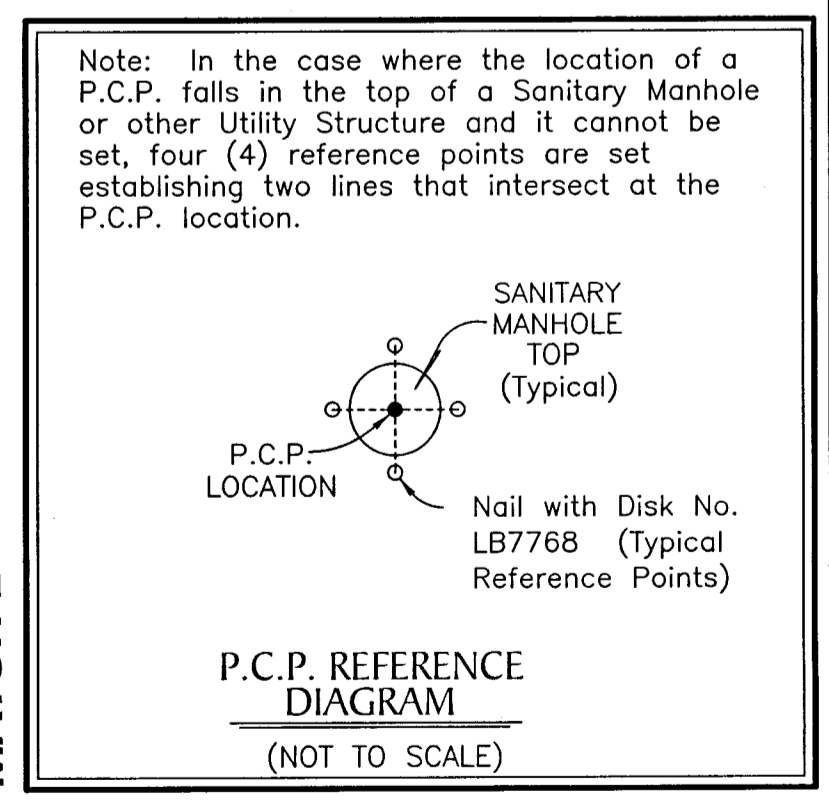
N00°11'04"W 1096.83'

TRACT B-2 (CDD) WETLAND CONSERVATION AREA

TRACT B-2 (CDD) DRAINAGE, LANDSCAPE AREA AND OPEN SPACE

TRACT B-2 (CDD) DRAINAGE, LANDSCAPE AREA AND OPEN SPACE

- LEGEND:**
- indicates (P.R.M.) Permanent Reference Monument - 4"x4" Concrete Monument LB7768, unless otherwise noted.
  - indicates (P.R.M.) Offset Permanent Reference Monument - 4"x4" Concrete Monument LB7768, unless otherwise noted.
  - indicates (P.C.P.) Permanent Control Point LB7768
  - D.A.E. --- Drainage & Access Easement
  - C.S.T. --- Clear Sight Triangle
  - O/A --- Overall
  - S.W.F.W.M.D. --- Southwest Florida Water Management District
  - U.E. --- Utility Easement
  - NR --- Non-Radial



MATCH LINE SEE SHEET 5

MATCH LINE SEE SHEET 7

MATCH LINE SEE SHEET 7

**GeoPoint**  
Surveying, Inc.

213 Hobbs Street  
Tampa, Florida 33619  
www.geopointsurvey.com

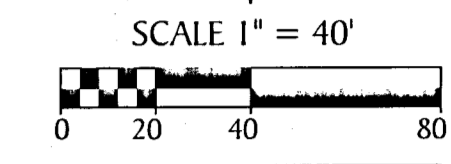
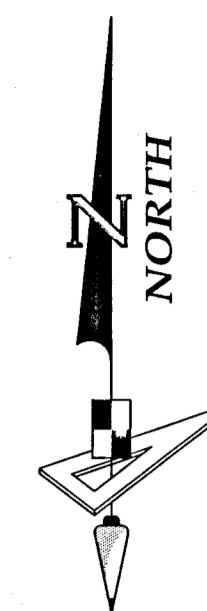
Phone: (813) 248-8888  
Fax: (813) 248-2266  
Licensed Business Number LB 7768

**SHEET 6 OF 10 SHEETS**

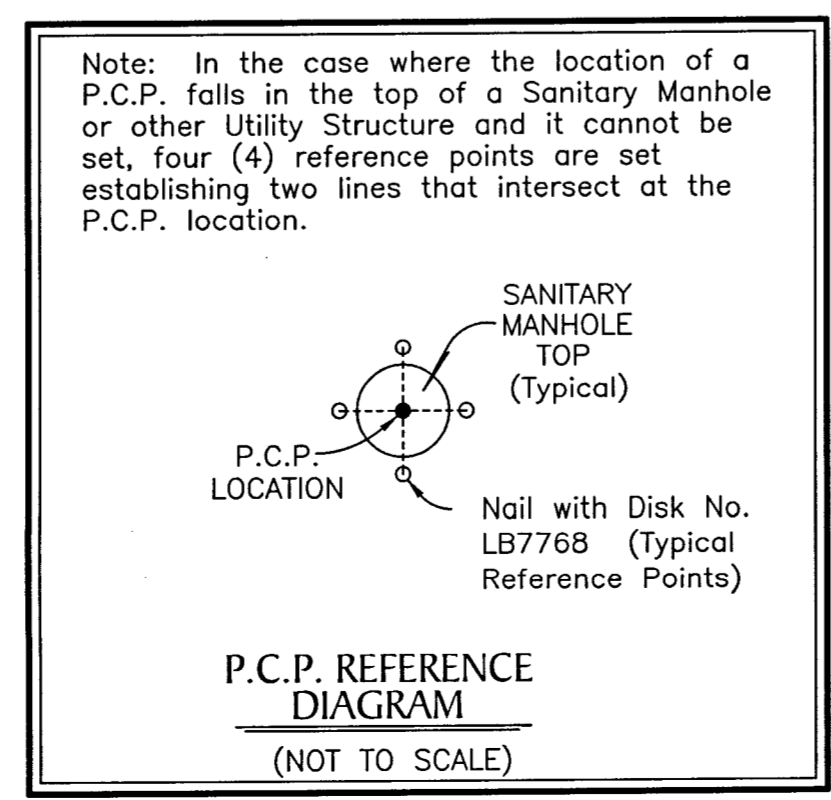
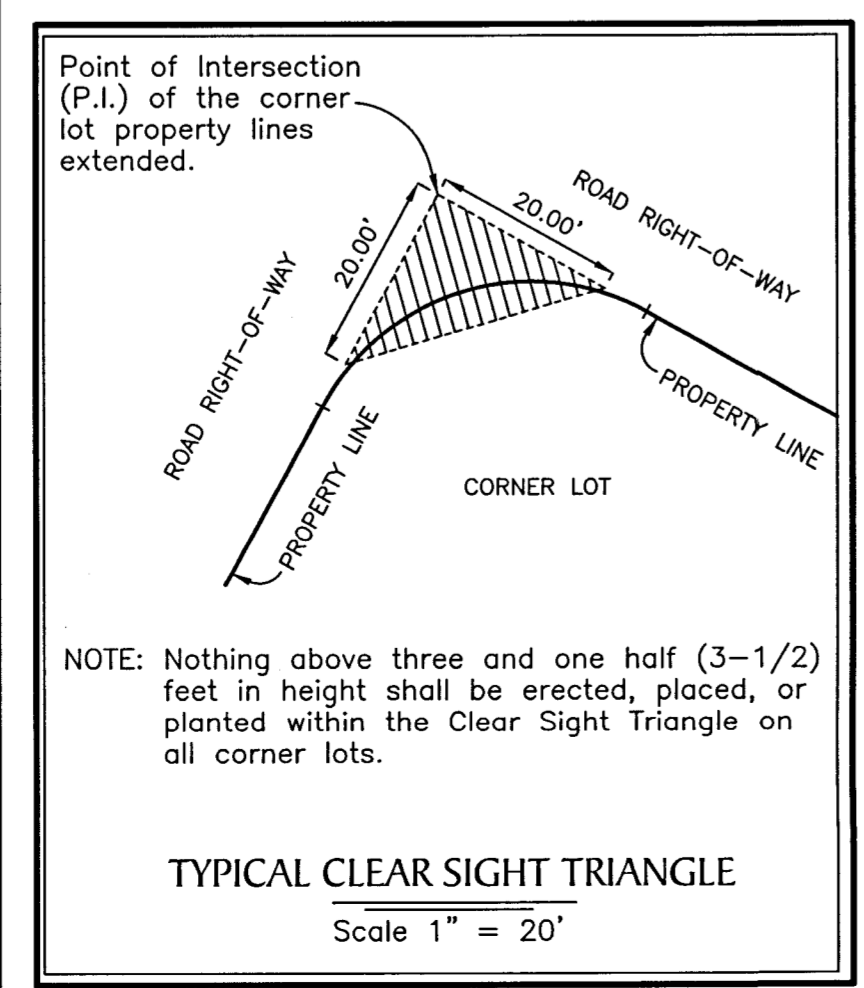
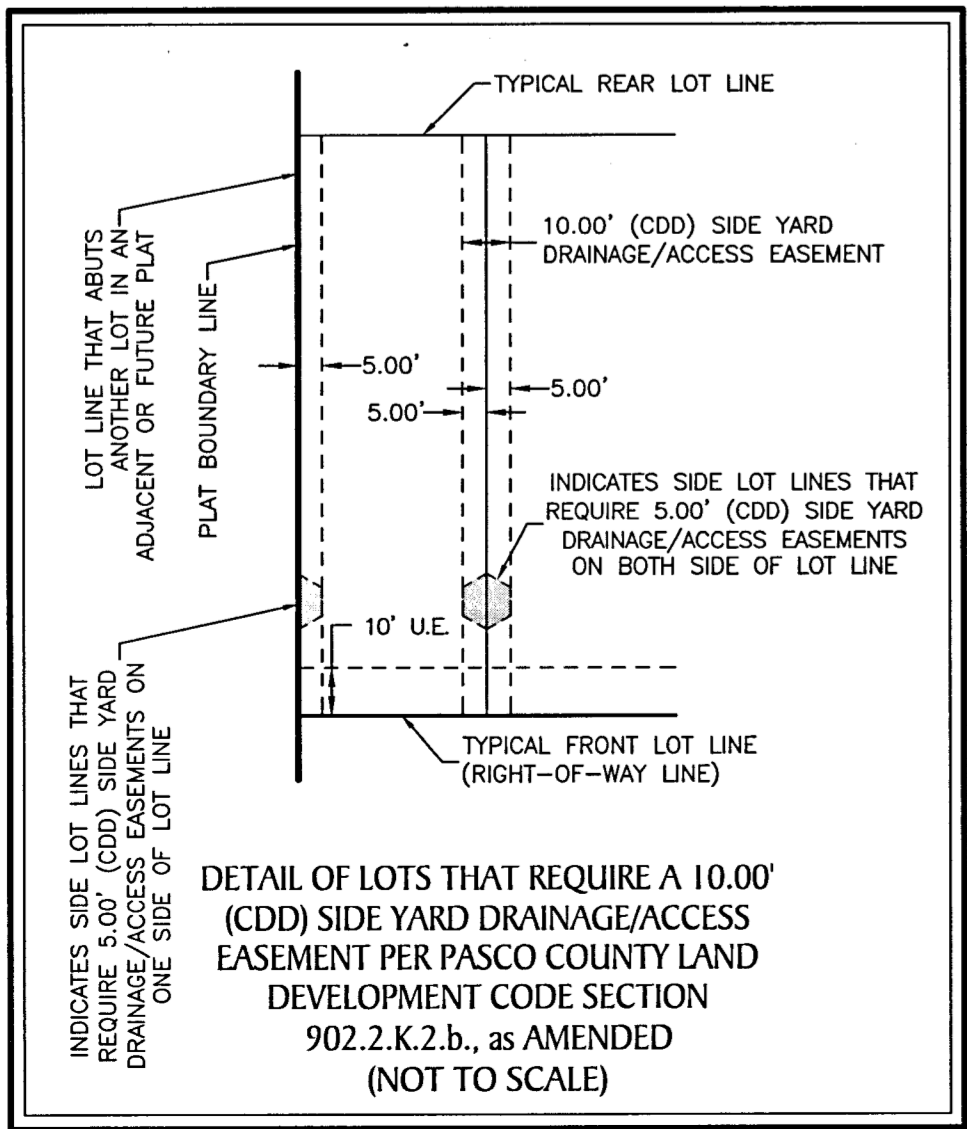
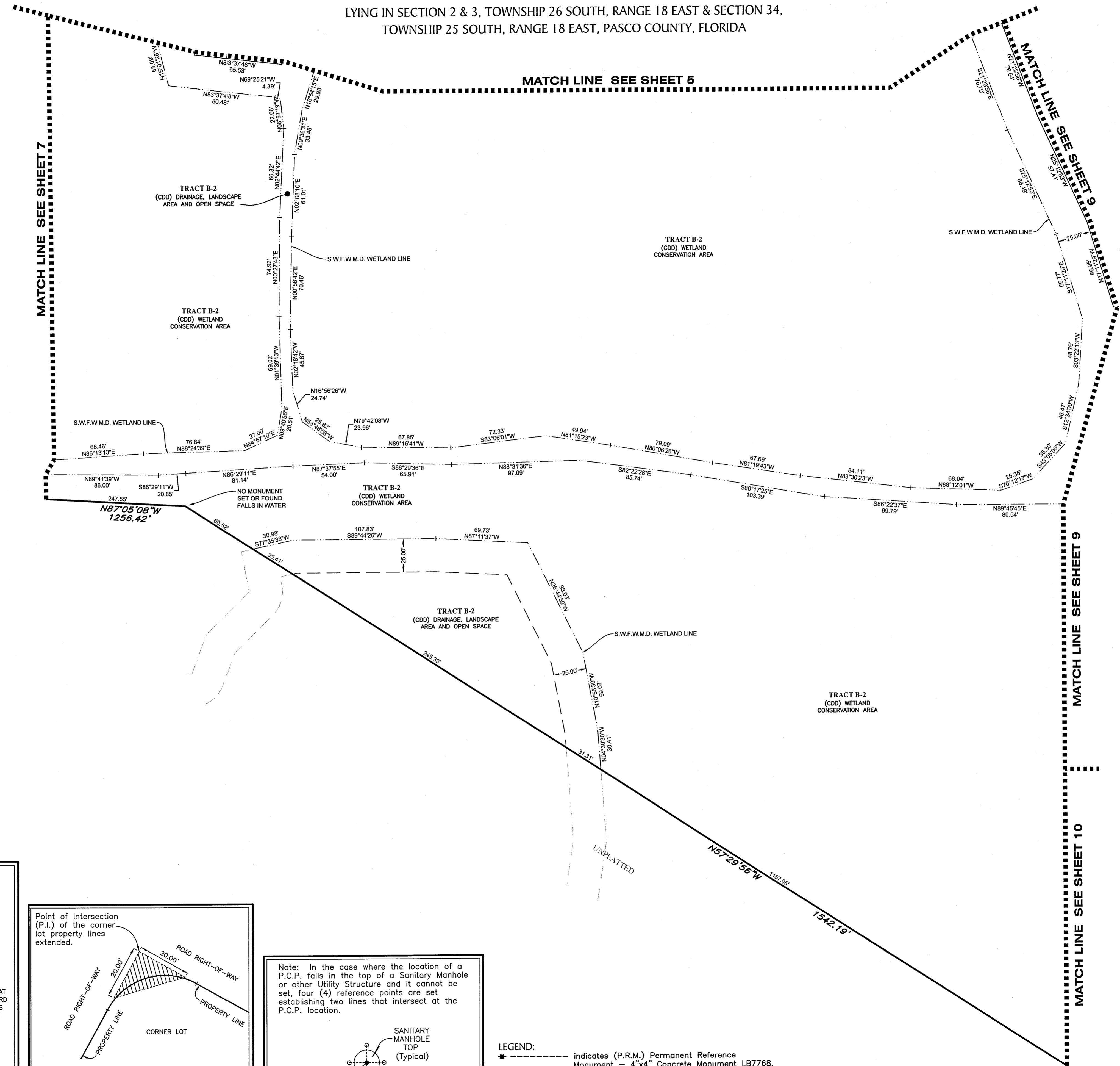


# DEERBROOK, PHASE 2

A REPLAT OF TRACT F-1 OF DEERBROOK, PHASE 1. PLAT BOOK 93, PAGE 38,  
LYING IN SECTION 2 & 3, TOWNSHIP 26 SOUTH, RANGE 18 EAST & SECTION 34,  
TOWNSHIP 25 SOUTH, RANGE 18 EAST, PASCO COUNTY, FLORIDA



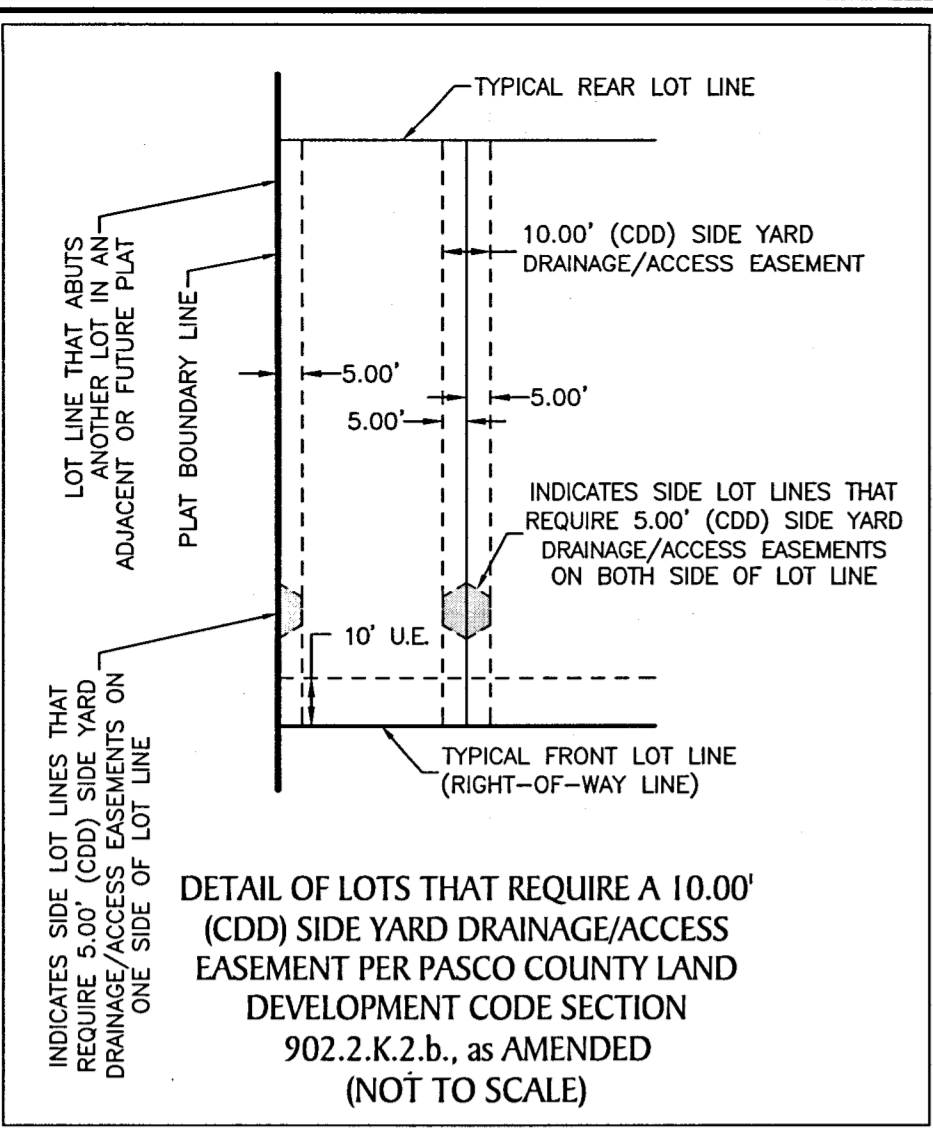
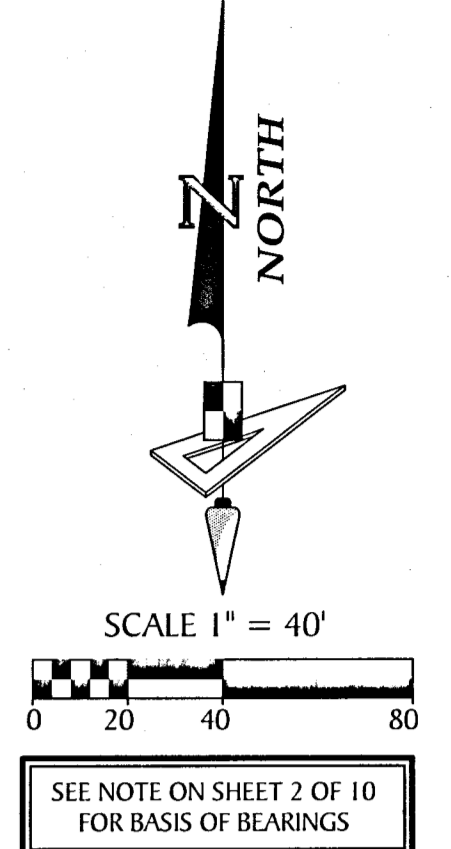
SEE NOTE ON SHEET 2 OF 10 FOR BASIS OF BEARINGS



- LEGEND:**
- indicates (P.R.M.) Permanent Reference Monument - 4"x4" Concrete Monument LB7768, unless otherwise noted.
  - ⊕ indicates (P.R.M.) Offset Permanent Reference Monument - 4"x4" Concrete Monument LB7768, unless otherwise noted.
  - indicates (P.C.P.) Permanent Control Point LB7768
  - S.W.F.W.M.D. --- Southwest Florida Water Management District
  - D.A.E. --- Drainage & Access Easement
  - O/A --- Overall
  - U.E. --- Utility Easement

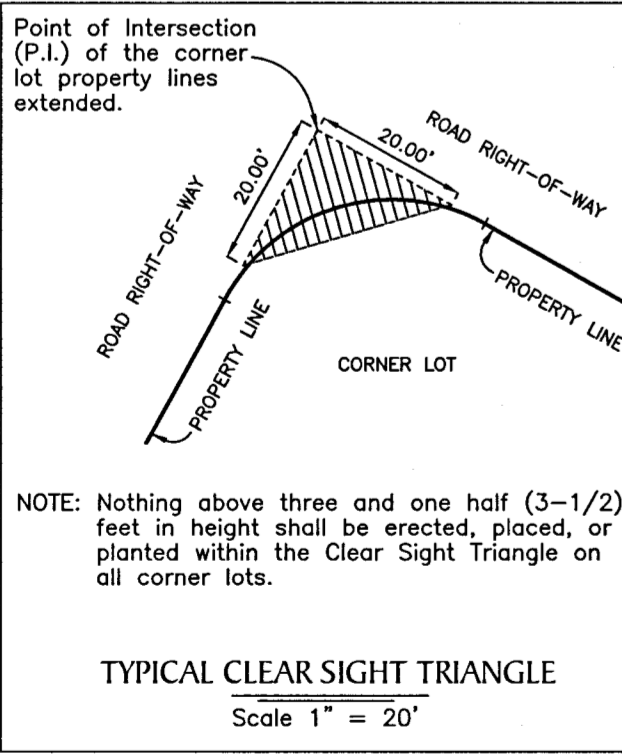
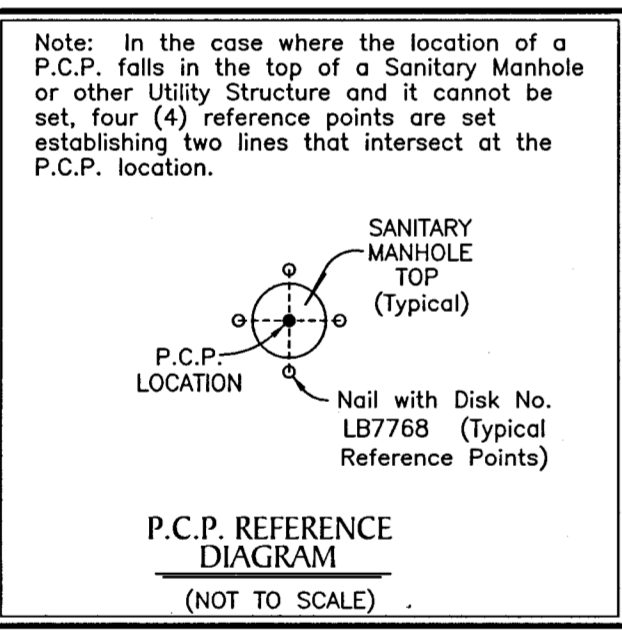
# DEERBROOK, PHASE 2

A REPLAT OF TRACT F-1 OF DEERBROOK, PHASE 1. PLAT BOOK 93, PAGE 38,  
LYING IN SECTION 2 & 3, TOWNSHIP 26 SOUTH, RANGE 18 EAST & SECTION 34,  
TOWNSHIP 25 SOUTH, RANGE 18 EAST, PASCO COUNTY, FLORIDA



**LINE DATA TABLE**

NO.	BEARING	LENGTH
L77	N 77°22'00" W	59.81'
L78	N 06°54'00" E	3.65'



**CURVE DATA TABLE**

NO.	RADIUS	DELTA	ARC	CHORD	BEARING
C42	243.00'	83°10'00"	352.72'	322.56'	N 48°35'00" W
C43	243.00'	23°57'05"	101.58'	100.84'	N 18°58'32" W
C44	243.00'	59°12'55"	251.14'	240.11'	N 60°33'32" W
C45	268.00'	14°34'24"	68.17'	67.98'	N 14°17'12" W
C46	20.00'	83°14'24"	29.05'	26.57'	S 20°02'48" W
C47	20.00'	78°46'03"	27.50'	25.38'	S 78°56'58" E
C48	218.00'	83°10'00"	316.43'	289.38'	N 48°35'00" W
C49	268.00'	50°36'03"	236.68'	229.07'	N 64°51'58" W
C50	268.00'	7°58'00"	37.26'	37.23'	N 10°59'00" W
C51	268.00'	6°36'24"	30.90'	30.89'	N 18°16'12" W

**CURVE DATA TABLE**

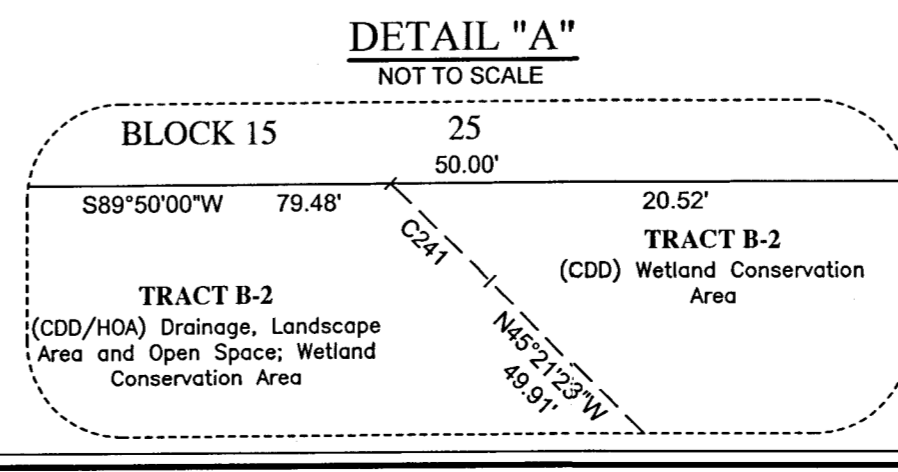
NO.	RADIUS	DELTA	ARC	CHORD	BEARING
C52	218.00'	23°10'00"	88.14'	87.55'	N 18°35'00" W
C53	218.00'	24°12'00"	92.08'	91.39'	N 42°16'00" W
C54	218.00'	24°12'00"	92.08'	91.39'	N 66°28'00" W
C55	218.00'	11°36'00"	44.14'	44.06'	N 84°22'00" W
C56	268.00'	4°10'00"	19.49'	19.49'	N 88°05'00" W
C57	268.00'	7°58'00"	37.26'	37.23'	N 82°01'00" W
C58	268.00'	7°58'00"	37.26'	37.23'	N 74°03'00" W
C59	268.00'	7°58'00"	37.26'	37.23'	N 66°05'00" W
C60	268.00'	7°58'00"	37.26'	37.23'	N 58°07'00" W
C61	268.00'	7°58'00"	37.26'	37.23'	N 50°09'00" W

**CURVE DATA TABLE**

NO.	RADIUS	DELTA	ARC	CHORD	BEARING
C62	268.00'	6°36'03"	30.88'	30.88'	N 42°51'58" W
C63	457.00'	90°00'00"	717.85'	646.30'	S 45°10'00" E
C64	482.00'	78°54'11"	663.77'	612.55'	S 50°42'54" E
C65	432.00'	77°31'39"	584.54'	540.96'	S 51°24'10" E
C66	482.00'	4°12'00"	35.33'	35.32'	S 88°04'00" E
C67	482.00'	5°44'00"	48.23'	48.21'	S 83°06'00" E
C68	482.00'	5°44'00"	48.23'	48.21'	S 77°22'00" E
C69	482.00'	5°44'00"	48.23'	48.21'	S 71°38'00" E
C70	482.00'	5°44'00"	48.23'	48.21'	S 65°54'00" E
C71	482.00'	6°18'00"	53.00'	52.97'	S 59°53'00" E

**CURVE DATA TABLE**

NO.	RADIUS	DELTA	ARC	CHORD	BEARING
C72	482.00'	6°18'00"	53.00'	52.97'	S 53°35'00" E
C73	432.00'	6°56'00"	52.28'	52.24'	S 58°58'00" E
C74	432.00'	6°56'00"	52.28'	52.24'	S 65°54'00" E
C75	432.00'	6°56'00"	52.28'	52.24'	S 72°50'00" E
C76	432.00'	6°56'00"	52.28'	52.24'	S 79°46'00" E
C77	432.00'	6°56'00"	52.28'	52.24'	S 86°42'00" E
C78	457.00'	83°56'31"	669.53'	611.24'	S 48°11'45" E
C79	25.00'	21°20'24"	9.31'	9.26'	S 75°10'58" W
C80	25.00'	48°54'42"	21.34'	20.70'	S 40°03'25" W
C81	25.00'	0°50'12"	0.37'	0.37'	N 45°46'28" W

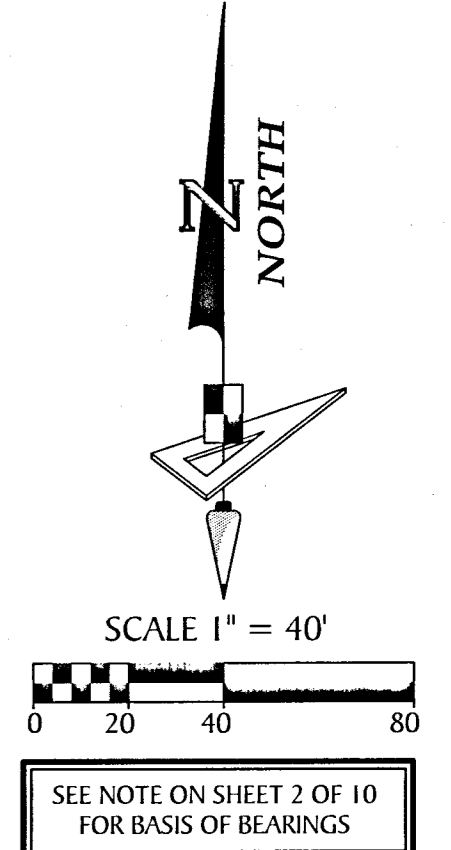


- LEGEND:**
- indicates (P.R.M.) Permanent Reference Monument - 4"x4" Concrete Monument LB7768, unless otherwise noted.
  - indicates (P.R.M.) Offset Permanent Reference Monument - 4"x4" Concrete Monument LB7768, unless otherwise noted.
  - indicates (P.C.P.) Permanent Control Point LB7768
  - S.W.F.W.M.D. --- Southwest Florida Water Management District
  - D.A.E. --- Drainage & Access Easement
  - C.S.T. --- Clear Sight Triangle
  - O/A --- Overall
  - U.E. --- Utility Easement

**GeoPoint Surveying, Inc.**  
 213 Hobbs Street  
 Tampa, Florida 33619  
 www.geopointsurvey.com  
 Phone: (813) 248-8888  
 Fax: (813) 248-2266  
 Licensed Business Number LB 7768

# DEERBROOK, PHASE 2

A REPLAT OF TRACT F-1 OF DEERBROOK, PHASE 1. PLAT BOOK 93, PAGE 38,  
LYING IN SECTION 2 & 3, TOWNSHIP 26 SOUTH, RANGE 18 EAST & SECTION 34,  
TOWNSHIP 25 SOUTH, RANGE 18 EAST, PASCO COUNTY, FLORIDA

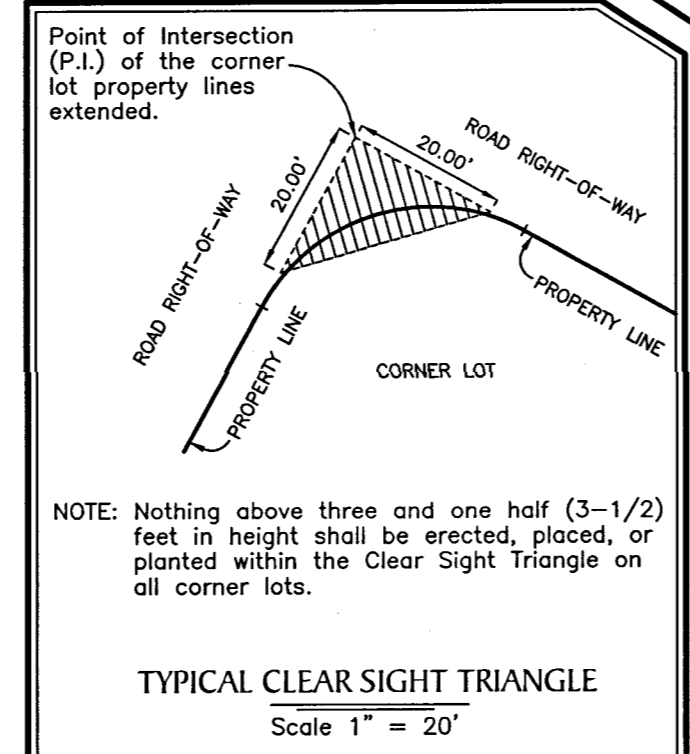
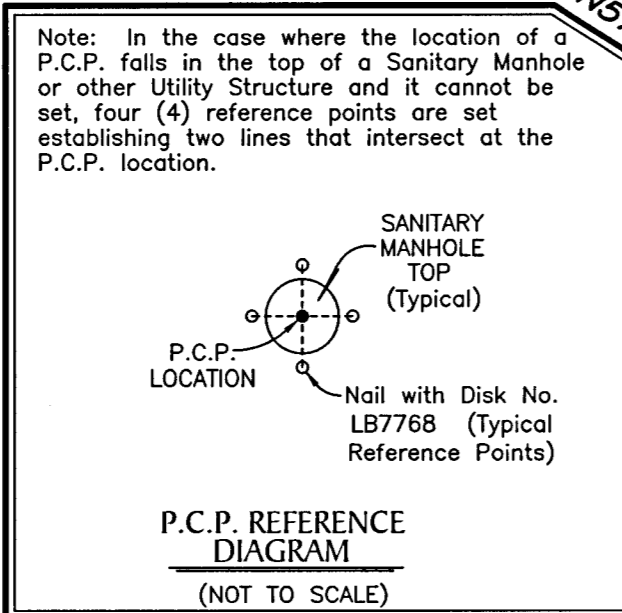
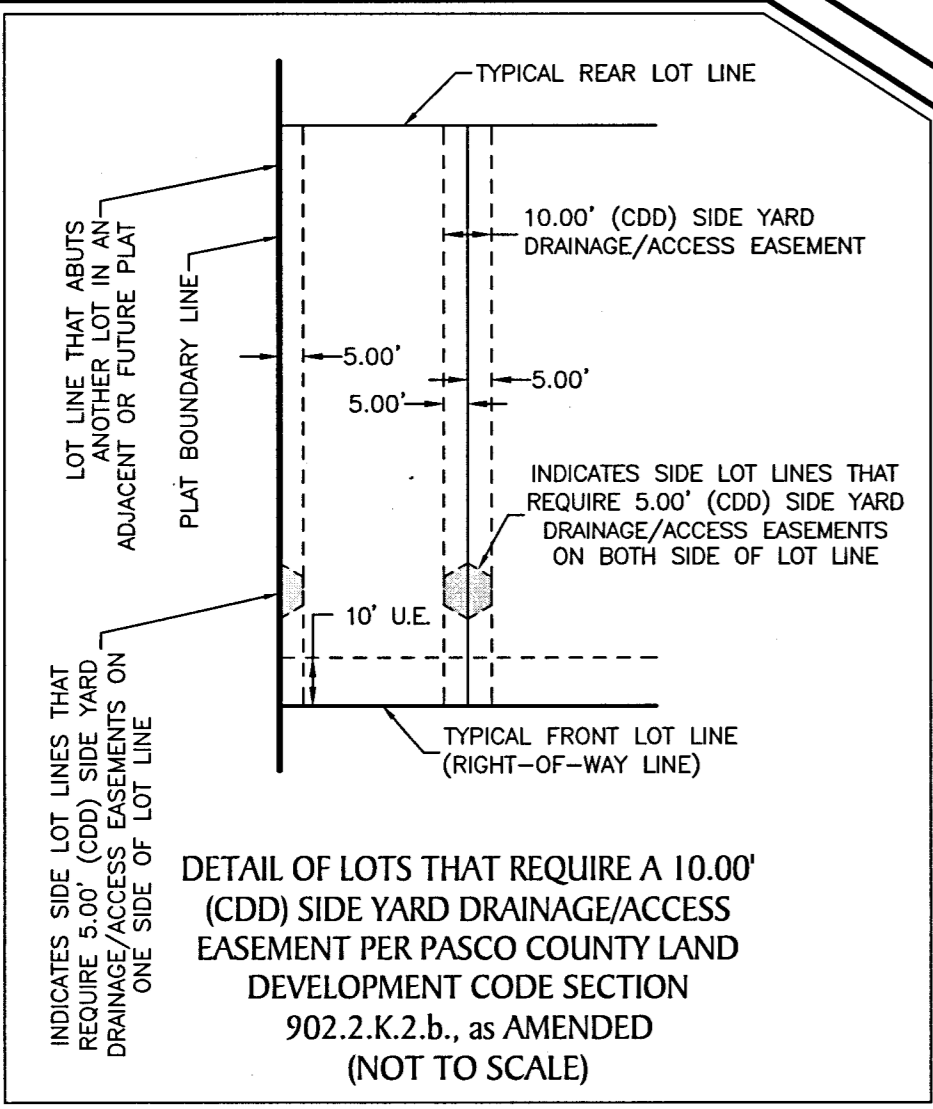
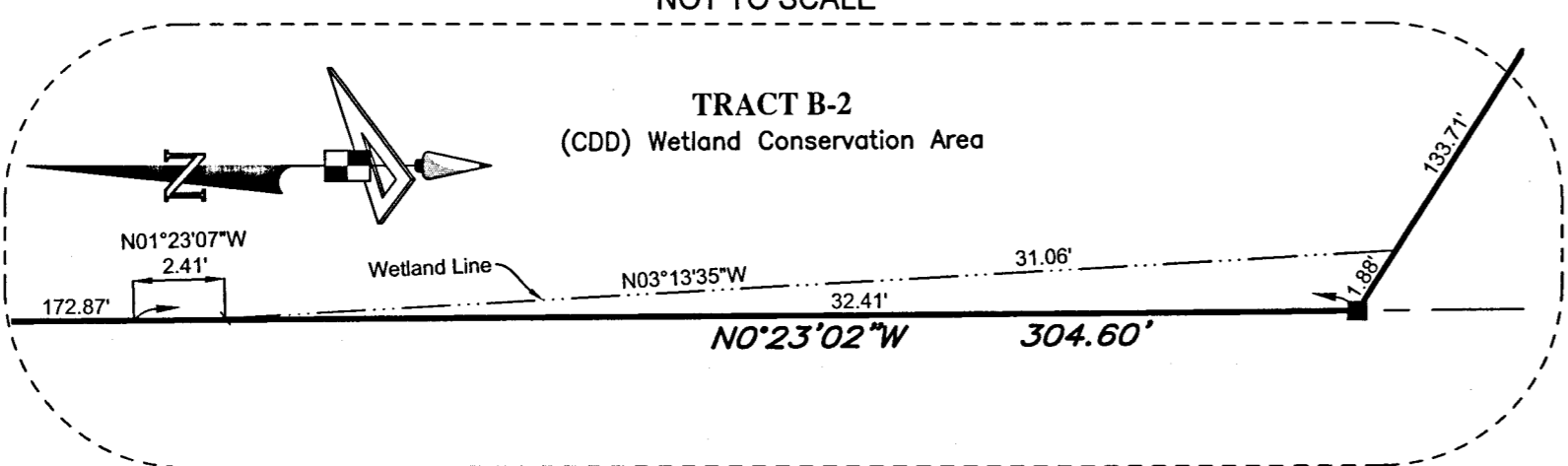


MATCH LINE SEE SHEET 9

LINE DATA TABLE		
NO.	BEARING	LENGTH
L57	N 08°59'05" E	3.78'
L58	N 50°39'19" E	17.60'
L59	N 64°50'51" W	5.69'

MATCH LINE SEE SHEET 8

**DETAIL "C"**  
NOT TO SCALE



CURVE DATA TABLE					
NO.	RADIUS	DELTA	ARC	CHORD	BEARING
C3	75.00'	89°13'02"	116.79'	105.34'	S 73°40'29" E
C4	75.00'	16°18'55"	21.36'	21.28'	S 37°13'03" E
C5	807.00'	37°26'32"	527.37'	518.03'	S 10°20'42" E
C6	782.00'	37°26'31"	511.03'	501.98'	S 10°20'42" E
C7	757.00'	37°26'31"	494.69'	485.93'	S 10°20'42" E
C8	807.00'	1°57'56"	27.68'	27.68'	S 28°04'58" E
C9	807.00'	3°28'00"	48.83'	48.82'	S 25°22'00" E
C10	807.00'	3°28'00"	48.83'	48.82'	S 21°54'00" E
C11	807.00'	3°28'00"	48.83'	48.82'	S 18°26'00" E
C12	807.00'	3°28'00"	48.83'	48.82'	S 14°58'00" E
C13	807.00'	3°28'00"	48.83'	48.82'	S 11°30'00" E
C14	807.00'	3°28'00"	48.83'	48.82'	S 08°02'00" E
C15	807.00'	3°28'00"	48.83'	48.82'	S 04°34'00" E
C16	807.00'	3°28'00"	48.83'	48.82'	S 01°06'00" E
C17	807.00'	3°28'00"	48.83'	48.82'	S 02°22'00" W
C18	807.00'	3°28'00"	48.83'	48.82'	S 05°50'00" W
C19	807.00'	0°48'32"	11.39'	11.39'	S 07°58'16" W
C20	475.00'	5°49'33"	48.30'	48.28'	S 05°27'47" E
C21	475.00'	7°42'00"	63.83'	63.79'	S 01°18'00" W
C22	475.00'	1°51'00"	15.34'	15.34'	S 06°04'30" W

CURVE DATA TABLE					
NO.	RADIUS	DELTA	ARC	CHORD	BEARING
C23	475.00'	15°22'33"	127.47'	127.09'	N 00°41'17" E
C24	500.00'	15°22'33"	134.18'	133.78'	N 00°41'17" E
C25	525.00'	15°22'33"	140.89'	140.47'	N 00°41'17" E
C26	525.00'	2°01'00"	18.48'	18.48'	N 05°59'30" W
C27	525.00'	4°14'00"	38.79'	38.78'	N 02°52'00" W
C28	525.00'	4°14'00"	38.79'	38.78'	N 01°22'00" E
C29	525.00'	4°14'00"	38.79'	38.78'	N 05°36'00" E
C30	525.00'	0°39'33"	6.04'	6.04'	N 08°02'47" E
C31	757.00'	2°52'33"	38.00'	37.99'	S 06°56'17" W
C32	757.00'	3°30'00"	46.24'	46.24'	S 03°45'00" W
C33	757.00'	3°30'00"	46.24'	46.24'	S 00°15'00" W
C34	757.00'	3°30'00"	46.24'	46.24'	S 03°15'00" E
C35	757.00'	3°31'40"	46.61'	46.60'	S 06°45'00" E
C36	757.00'	3°31'40"	46.61'	46.60'	S 10°17'30" E
C37	757.00'	3°31'40"	46.61'	46.60'	S 13°49'10" E
C38	757.00'	3°31'40"	46.61'	46.60'	S 17°20'50" E
C39	757.00'	3°31'40"	46.61'	46.60'	S 20°52'30" E
C40	757.00'	3°31'40"	46.61'	46.60'	S 24°24'10" E
C41	757.00'	2°53'58"	38.31'	38.30'	S 27°36'59" E
C42	757.00'	3°31'40"	46.61'	46.60'	S 31°08'11" E
C43	25.00'	41°40'14"	18.18'	17.78'	N 29°49'12" E
C145	50.00'	89°13'02"	77.86'	70.23'	S 73°40'29" E
C146	25.00'	89°13'02"	38.93'	35.11'	S 73°40'29" E
C150	25.00'	3°40'27"	14.88'	14.66'	N 47°47'38" W
C212	25.00'	46°04'11"	20.10'	19.56'	S 31°18'11" E
C245	943.00'	15°32'07"	255.68'	254.90'	S 17°42'24" E
C249	25.00'	44°19'54"	19.34'	18.86'	N 60°09'24" W

CURVE DATA TABLE					
NO.	RADIUS	DELTA	ARC	CHORD	BEARING
C143	25.00'	41°40'14"	18.18'	17.78'	N 29°49'12" E
C145	50.00'	89°13'02"	77.86'	70.23'	S 73°40'29" E
C146	25.00'	89°13'02"	38.93'	35.11'	S 73°40'29" E
C150	25.00'	3°40'27"	14.88'	14.66'	N 47°47'38" W
C212	25.00'	46°04'11"	20.10'	19.56'	S 31°18'11" E
C245	943.00'	15°32'07"	255.68'	254.90'	S 17°42'24" E
C249	25.00'	44°19'54"	19.34'	18.86'	N 60°09'24" W

- LEGEND:**
- indicates (P.R.M.) Permanent Reference Monument - 4"x4" Concrete Monument LB7768, unless otherwise noted.
  - indicates (P.R.M.) Offset Permanent Reference Monument - 4"x4" Concrete Monument LB7768, unless otherwise noted.
  - indicates (P.C.P.) Permanent Control Point LB7768
  - S.W.F.W.M.D. --- Southwest Florida Water Management District
  - C.S.T. --- Clear Sight Triangle
  - D.A.E. --- Drainage & Access Easement
  - O/A --- Overall
  - NR --- Non-Radial
  - U.E. --- Utility Easement

**GeoPoint**  
Surveying, Inc.

213 Hobbs Street  
Tampa, Florida 33619  
www.geopointsurvey.com

Phone: (813) 248-8888  
Fax: (813) 248-2266  
Licensed Business Number LB 7768

**SHEET 10 OF 10 SHEETS**