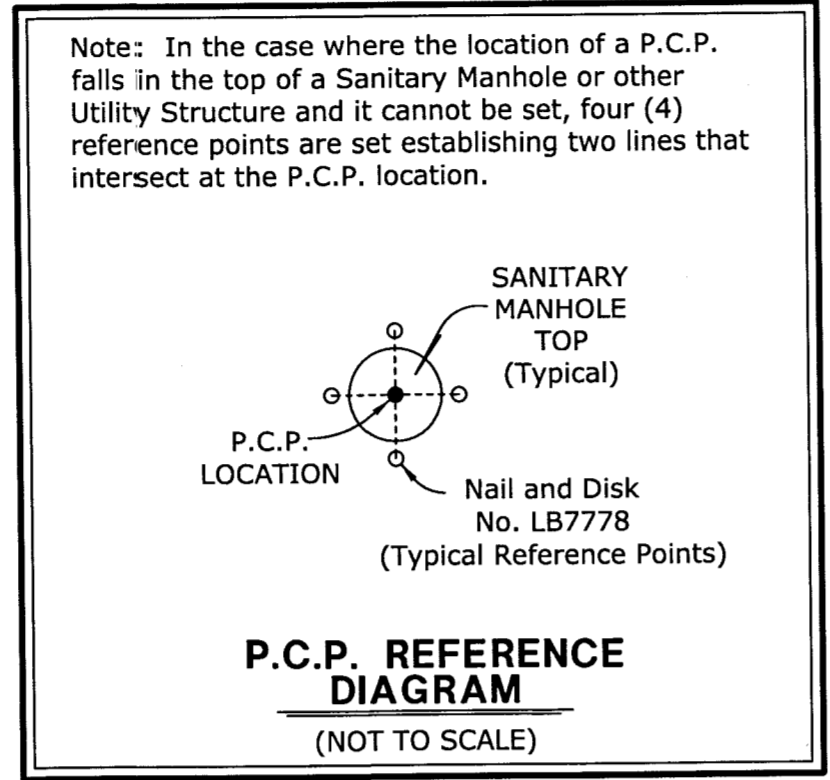


TWO RIVERS PARCEL F2 PHASE 1
 LYING IN SECTIONS 28 AND 33, TOWNSHIP 26 SOUTH, RANGE 21 EAST, PASCO COUNTY, FLORIDA



The coordinate values shown hereon are based on the Pasco County Primary Horizontal Control Network and were established to Pasco County Surveying and Mapping accepted methods and procedures for establishment of horizontal surveying control, and/or approved by the County Surveyor.

NOTE:
 A 1/2 INCH DIAMETER IRON ROD WITH CAP No. LB7778, OR A 5/8 INCH DIAMETER IRON PIPE WITH CAP No. LB7778, WILL BE SET AT EACH LOT CORNER AS REQUIRED BY CHAPTER 177 OF THE FLORIDA STATUTES WITHIN THE TIME ALLOTTED IN 177.091 (9), UNLESS PRIOR MONUMENTATION OF THE LOT CORNER IS FOUND IN PLACE.

NOTICE:
 This plat, as recorded in its graphic form, is the official depiction of the subdivided lands described herein and will in no circumstances be supplanted in authority by any other graphic or digital form of the plat. There may be additional restrictions that are not recorded on this plat that may be found in the public records of this county.

NOTE:
 All platted utility easements shall provide that such easements shall also be easements for the construction, installation, maintenance, and operation of cable television services; provided, however, no such construction, installation, maintenance, and operation of cable television services shall interfere with the facilities and services of an electric, telephone, gas, or other public utility. In the event a cable television company damages the facilities of a public utility, it shall be solely responsible for the damages. This section shall not apply to those private easements granted to or obtained by a particular electric, telephone, gas, or other public utility. Such construction, installation, maintenance, and operation shall comply with the National Electrical Safety Code as adopted by the Florida Public Service Commission.

NOTE: EASEMENTS, BUFFERS AND OTHER SUCH LABELS AND DIMENSIONS OF A PARALLEL NATURE AS SHOWN HEREON AND INDICATED TO THE NEAREST FOOT (IE: 5' UTILITY EASEMENT) ARE ASSUMED TO BE THE SAME DIMENSION EXTENDED TO THE NEAREST HUNDREDTH OF A FOOT WITH NO GREATER OR LESSER VALUE (IE: 5' = 5.00')

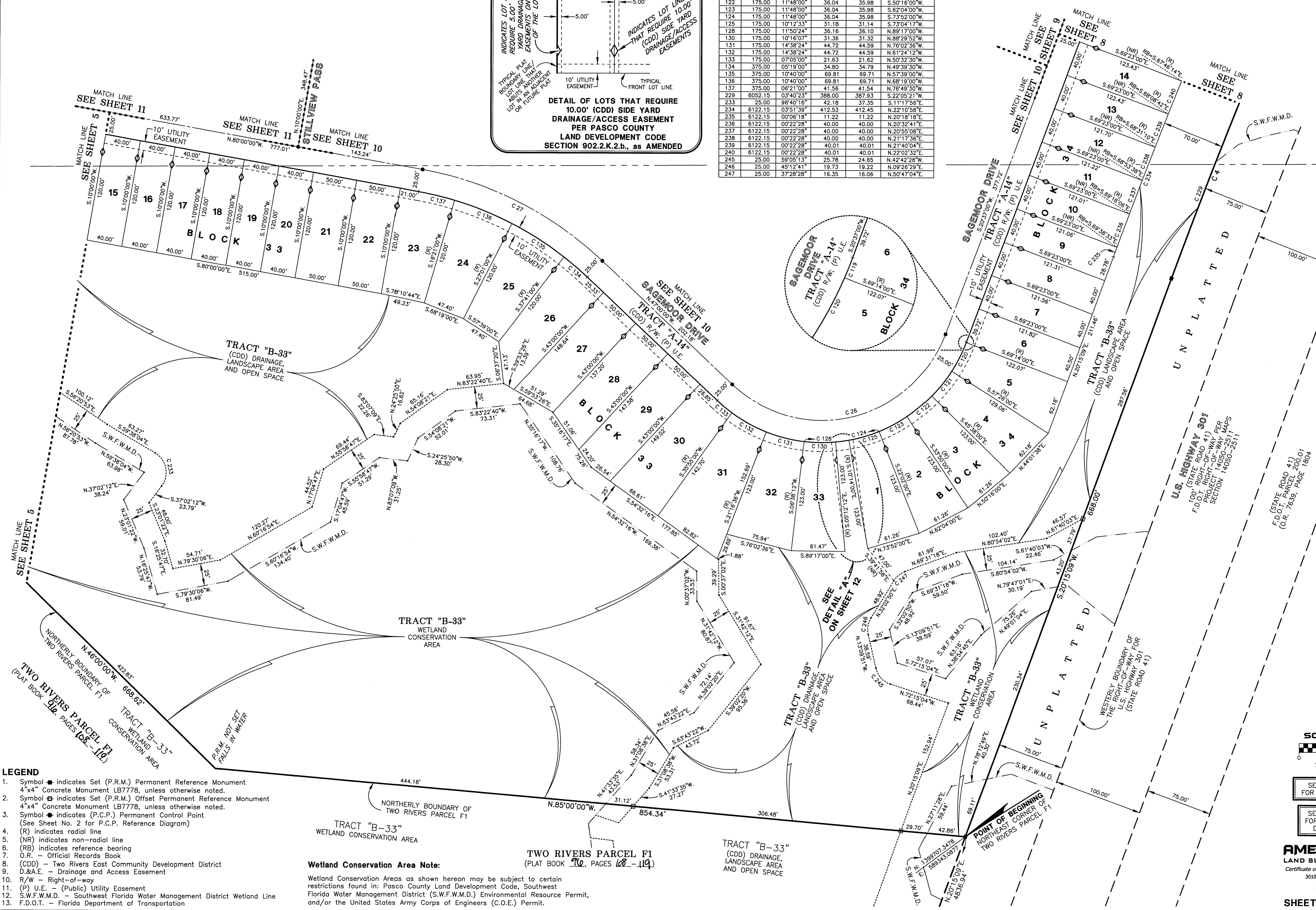
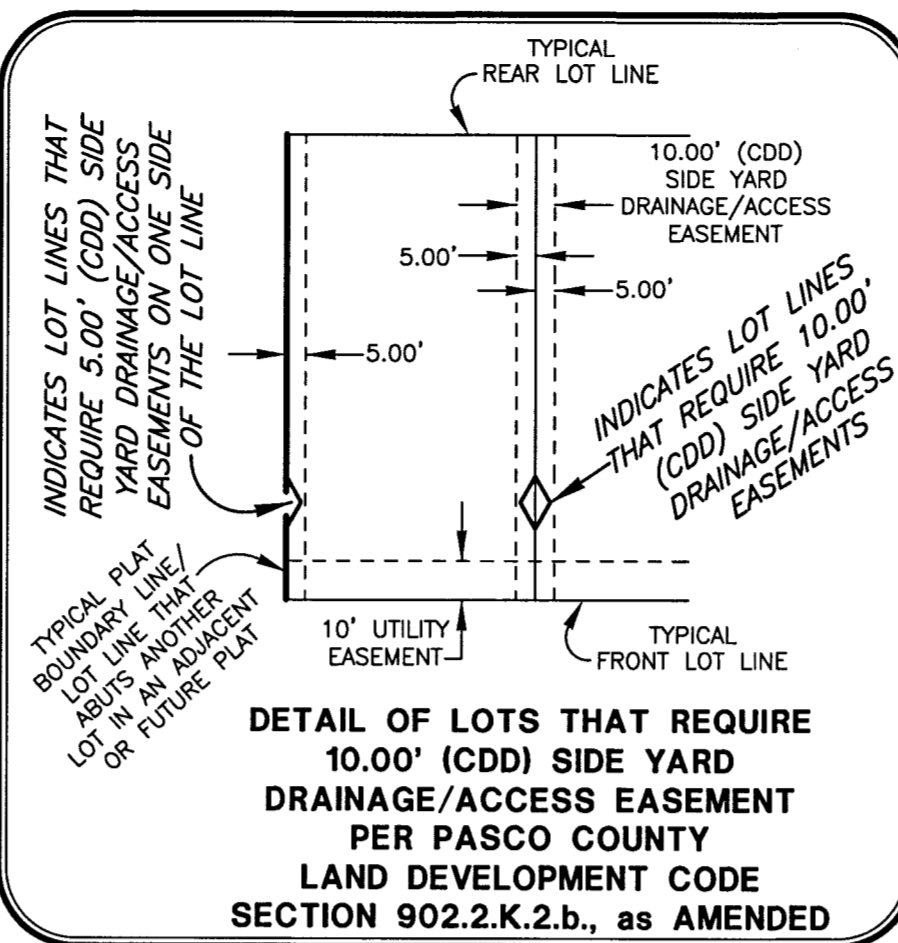
TRACT DESIGNATION TABLE

TRACT	DESIGNATION	ACREAGE
TRACT "A-14"	(CDD) RIGHT-OF-WAY; (PUBLIC) UTILITY EASEMENT	9.119 Ac.±
TRACT "B-33"	(CDD) DRAINAGE, LANDSCAPE AREA AND OPEN SPACE; (CDD) LANDSCAPE AREA AND OPEN SPACE; WETLAND CONSERVATION AREA	26.292 Ac.±
TRACT "B-35"	(CDD) DRAINAGE, LANDSCAPE AREA AND OPEN SPACE; (CDD) LANDSCAPE AREA AND OPEN SPACE; WETLAND CONSERVATION AREA	3.000 Ac.±
TRACT "B-38"	(CDD) DRAINAGE, LANDSCAPE AREA AND OPEN SPACE; (CDD) LANDSCAPE AREA AND OPEN SPACE; WETLAND CONSERVATION AREA	7.306 Ac.±
TRACT "B-39"	(CDD) DRAINAGE, LANDSCAPE AREA AND OPEN SPACE	3.051 Ac.±
TRACT "B-40"	(CDD) DRAINAGE, LANDSCAPE AREA AND OPEN SPACE	6.220 Ac.±
TRACT "P-30"	(CDD) PARK AREA	1.138 Ac.±
TRACT "Z-22"	(PUBLIC) PUMP STATION SITE	0.069 Ac.±

TWO RIVERS PARCEL F2 PHASE 1
 LYING IN SECTIONS 28 AND 33, TOWNSHIP 26 SOUTH, RANGE 21 EAST, PASCO COUNTY, FLORIDA

CURVE DATA TABLE

NO.	RADIUS	DELTA	ARC	CHORD	BEARING
4	6052.15	0°59'35"	738.68	738.22	S.23°44'56"W.
26	150.00	112°23'00"	294.22	249.27	S.76°48'30"W.
27	400.00	33°00'00"	230.38	227.21	N.63°30'00"W.
119	175.00	00°09'00"	0.46	0.46	S.20°41'30"W.
120	175.00	11°48'00"	36.04	35.98	S.26°40'00"W.
121	175.00	11°48'00"	36.04	35.98	S.38°28'00"W.
122	175.00	11°48'00"	36.04	35.98	S.50°16'00"W.
123	175.00	11°48'00"	36.04	35.98	S.62°04'00"W.
124	175.00	11°48'00"	36.04	35.98	S.73°52'00"W.
125	175.00	10°12'33"	31.18	31.14	S.73°04'17"W.
128	175.00	11°50'24"	36.16	36.10	N.89°17'00"W.
130	175.00	10°16'07"	31.36	31.32	N.88°29'52"W.
131	175.00	14°38'24"	44.72	44.59	N.76°02'36"W.
132	175.00	14°38'24"	44.72	44.59	N.61°24'12"W.
133	175.00	07°05'00"	21.63	21.62	N.50°23'00"W.
134	375.00	05°19'00"	34.80	34.79	N.49°39'30"W.
135	375.00	10°40'00"	69.81	69.71	N.57°39'00"W.
136	375.00	10°40'00"	69.81	69.71	N.68°19'00"W.
137	375.00	06°21'00"	41.56	41.54	N.76°49'30"W.
229	6052.15	03°40'23"	388.00	387.93	S.22°05'21"W.
233	25.00	96°40'16"	42.18	37.35	S.11°17'56"E.
234	6122.15	03°51'59"	412.53	412.45	N.22°10'58"E.
235	6122.15	00°06'18"	11.22	11.22	N.20°18'18"E.
236	6122.15	00°22'28"	40.00	40.00	N.20°32'41"E.
237	6122.15	00°22'28"	40.00	40.00	N.20°55'08"E.
238	6122.15	00°22'28"	40.00	40.00	N.21°17'36"E.
239	6122.15	00°22'28"	40.01	40.01	N.21°40'04"E.
240	6122.15	00°22'28"	40.01	40.01	N.22°02'32"E.
245	25.00	59°05'13"	25.78	24.85	N.22°42'28"W.
246	25.00	45°12'41"	19.74	19.22	N.09°26'29"W.
247	25.00	37°28'28"	16.35	16.06	N.50°47'04"E.



- LEGEND**
- Symbol ■ indicates Set (P.R.M.) Permanent Reference Monument
 - Symbol □ indicates Set (P.R.M.) Offset Permanent Reference Monument
 - Symbol ● indicates (P.C.P.) Permanent Control Point (See Sheet No. 2 for P.C.P. Reference Diagram)
 - (R) indicates radial line
 - (NR) indicates non-radial line
 - (RB) indicates reference bearing
 - O.R. - Official Records Book
 - (CDD) - Two Rivers East Community Development District
 - D.&A.E. - Drainage and Access Easement
 - R/W - Right-of-way
 - (P) U.E. - (Public) Utility Easement
 - S.W.F.W.M.D. - Southwest Florida Water Management District Wetland Line
 - F.D.O.T. - Florida Department of Transportation

Wetland Conservation Area Note:
 Wetland Conservation Areas as shown hereon may be subject to certain restrictions found in: Pasco County Land Development Code, Southwest Florida Water Management District (S.W.F.W.M.D.) Environmental Resource Permit, and/or the United States Army Corps of Engineers (C.O.E.) Permit.

SCALE: 1" = 50'

SCALE IN FEET

SEE SHEET 3 OF 12 FOR BASIS OF BEARINGS

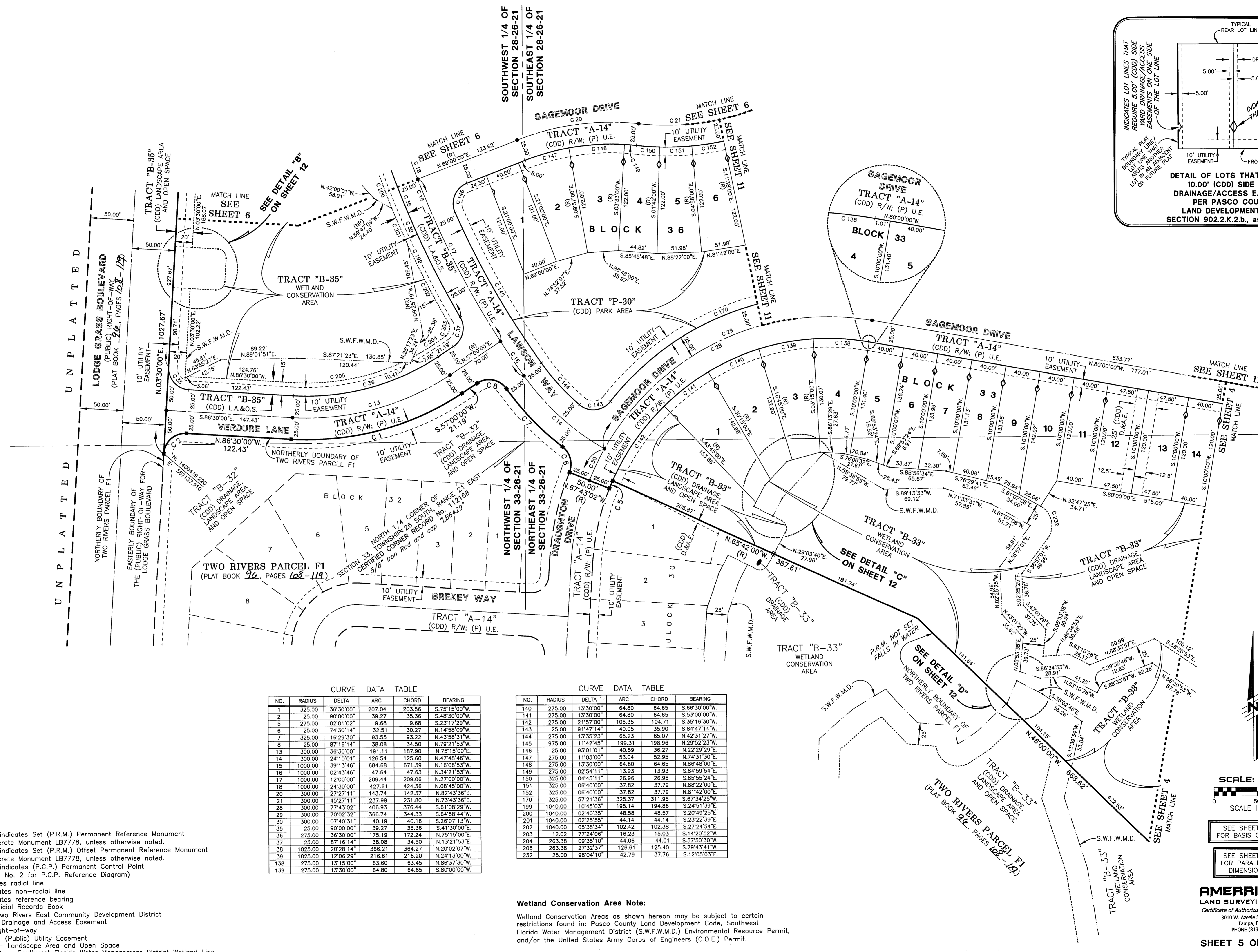
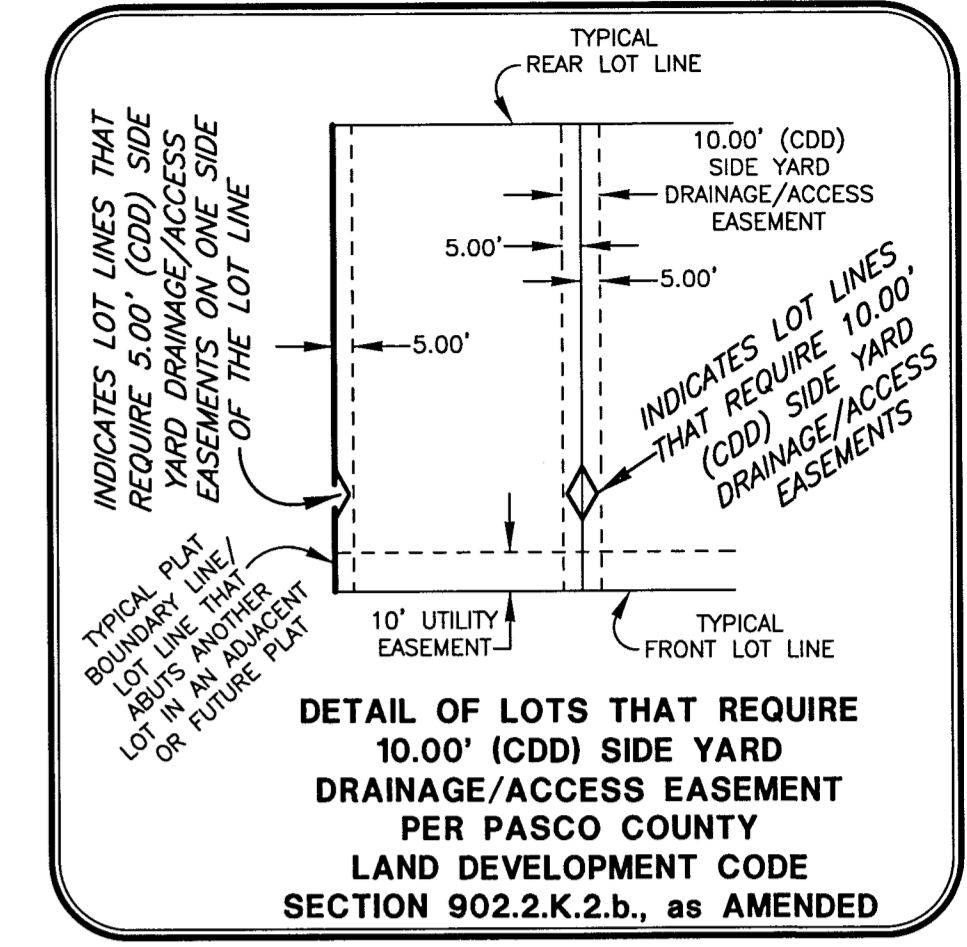
SEE SHEET 2 OF 12 FOR PARALLEL OFFSET DIMENSIONS NOTE

AMERRITT, INC.
 LAND SURVEYING & MAPPING
 Certificate of Authorization Number LB 7778
 3010 W. Azalea Street, Suite 150
 Tampa, FL 33609
 PHONE (813) 221-5200

SHEET 4 OF 12 SHEETS

TWO RIVERS PARCEL F2 PHASE 1

LYING IN SECTIONS 28 AND 33, TOWNSHIP 26 SOUTH, RANGE 21 EAST, PASCO COUNTY, FLORIDA



CURVE DATA TABLE

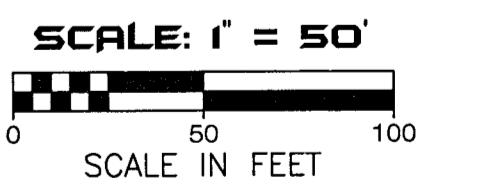
NO.	RADIUS	DELTA	ARC	CHORD	BEARING
1	325.00	36°30'00"	207.04	203.56	S.75°15'00"W.
2	25.00	90°00'00"	39.27	35.36	S.48°30'00"W.
5	275.00	02°01'02"	9.68	9.68	S.23°17'29"W.
6	25.00	74°30'14"	32.51	30.27	N.14°58'09"W.
7	325.00	16°29'30"	93.55	93.22	N.43°58'31"W.
8	25.00	87°15'11"	143.74	142.37	N.82°43'36"E.
13	300.00	36°30'00"	191.11	187.90	N.75°15'00"E.
14	300.00	24°10'01"	126.54	125.60	N.47°48'46"W.
15	1000.00	39°13'46"	684.68	671.39	N.16°06'53"W.
16	1000.00	02°43'46"	47.64	47.63	N.34°21'53"W.
17	1000.00	12°00'00"	209.44	209.06	N.27°00'00"W.
18	1000.00	24°30'00"	427.61	424.36	N.08°45'00"W.
20	300.00	27°27'11"	143.74	142.37	N.82°43'36"E.
21	300.00	45°27'11"	237.99	231.80	N.73°43'36"E.
28	300.00	77°43'02"	406.93	376.44	S.4°51'39"W.
29	300.00	70°02'32"	366.74	344.33	S.8°45'44"W.
30	300.00	07°40'31"	40.19	40.16	S.26°07'13"W.
35	25.00	90°00'00"	39.27	35.36	S.41°30'00"E.
36	275.00	36°30'00"	175.19	172.24	N.75°15'00"E.
37	25.00	87°15'11"	143.74	142.37	N.82°43'36"E.
38	1025.00	20°28'14"	366.21	364.27	N.20°02'07"W.
39	1025.00	12°06'29"	216.61	216.20	N.24°13'00"W.
138	275.00	13°15'00"	63.60	63.45	N.86°37'30"W.
139	275.00	13°30'00"	64.80	64.65	S.80°00'00"W.

CURVE DATA TABLE

NO.	RADIUS	DELTA	ARC	CHORD	BEARING
140	275.00	13°30'00"	64.80	64.65	S.66°30'00"W.
141	275.00	13°30'00"	64.80	64.65	S.53°00'00"W.
142	275.00	21°57'00"	105.35	104.71	S.35°16'30"W.
143	25.00	91°47'14"	40.05	35.90	S.84°47'14"W.
144	275.00	13°30'00"	65.23	65.07	N.42°31'27"W.
145	275.00	13°42'45"	65.23	65.07	N.29°52'23"W.
146	25.00	93°01'01"	40.59	36.27	N.22°29'29"E.
147	275.00	11°03'00"	53.04	52.95	N.74°31'30"E.
148	275.00	13°30'00"	64.80	64.65	N.86°48'00"E.
149	275.00	02°54'11"	13.93	13.93	S.84°59'54"E.
150	325.00	04°45'11"	26.96	26.95	S.85°55'24"E.
151	325.00	08°40'00"	37.82	37.79	N.88°22'00"E.
152	325.00	06°40'00"	37.82	37.79	N.81°42'00"E.
170	325.00	57°21'36"	325.37	311.95	S.67°34'25"W.
199	1040.00	10°45'03"	195.14	194.86	S.20°49'25"E.
200	1040.00	02°40'35"	48.58	48.57	S.20°49'25"E.
201	1040.00	02°25'55"	44.14	44.14	S.23°22'39"E.
202	1040.00	05°38'54"	102.42	102.38	S.27°24'54"E.
203	12.02	77°24'06"	16.23	15.03	S.14°20'52"W.
204	263.38	09°35'10"	44.06	44.01	S.57°50'30"W.
205	263.38	27°32'37"	126.61	125.40	S.79°43'41"W.
232	25.00	98°04'10"	42.79	37.76	S.12°05'03"E.

- LEGEND**
- Symbol ■ indicates Set (P.R.M.) Permanent Reference Monument
4"x4" Concrete Monument LB7778, unless otherwise noted.
 - Symbol ⊕ indicates Set (P.R.M.) Offset Permanent Reference Monument
4"x4" Concrete Monument LB7778, unless otherwise noted.
 - Symbol ● indicates (P.C.P.) Permanent Control Point
(See Sheet No. 2 for P.C.P. Reference Diagram)
 - (R) Indicates radial line
 - (NR) indicates non-radial line
 - (RB) indicates reference bearing
 - O.R. - Official Records Book
 - (CDD) - Two Rivers East Community Development District
 - D.&A.E. - Drainage and Access Easement
 - R/W - Right-of-way
 - (P) U.E. - (Public) Utility Easement
 - L.A.&O.S. - Landscape Area and Open Space
 - S.W.F.W.M.D. - Southwest Florida Water Management District Wetland Line

Wetland Conservation Area Note:
Wetland Conservation Areas as shown hereon may be subject to certain restrictions found in: Pasco County Land Development Code, Southwest Florida Water Management District (S.W.F.W.M.D.) Environmental Resource Permit, and/or the United States Army Corps of Engineers (C.O.E.) Permit.



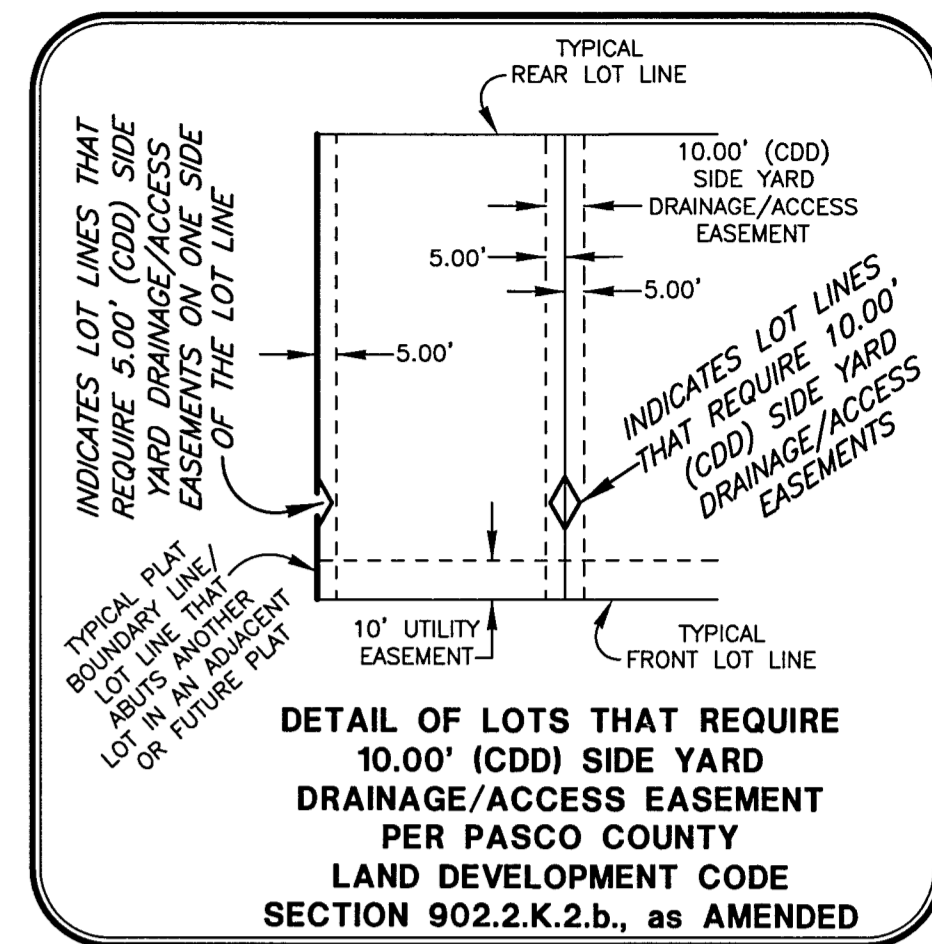
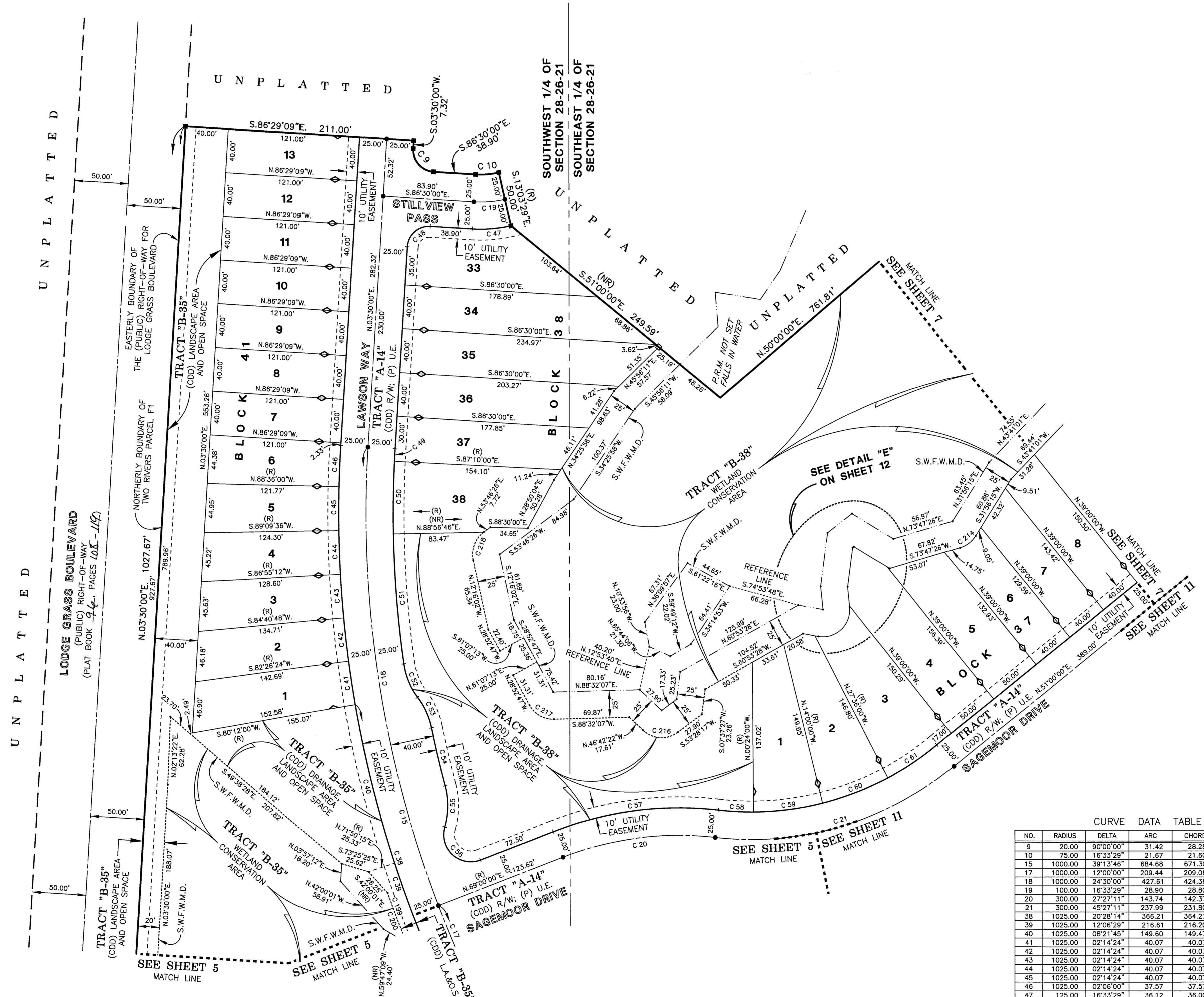
SEE SHEET 3 OF 12 FOR BASIS OF BEARINGS

SEE SHEET 2 OF 12 FOR PARALLEL OFFSET DIMENSIONS NOTE

AMERRITT, INC.
LAND SURVEYING & MAPPING
Certificate of Authorization Number LB 7778
3010 W. Azulee Street, Suite 150
Tampa, FL 33609
PHONE (813) 221-5200

TWO RIVERS PARCEL F2 PHASE 1

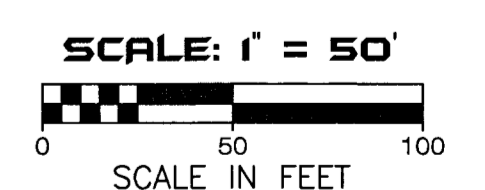
LYING IN SECTIONS 28 AND 33, TOWNSHIP 26 SOUTH, RANGE 21 EAST, PASCO COUNTY, FLORIDA



- LEGEND**
1. Symbol \blacksquare indicates Set (P.R.M.) Permanent Reference Monument
4"x4" Concrete Monument LB7778, unless otherwise noted.
 2. Symbol \boxtimes indicates Set (P.R.M.) Offset Permanent Reference Monument
4"x4" Concrete Monument LB7778, unless otherwise noted.
 3. Symbol \bullet indicates (P.C.P.) Permanent Control Point
(See Sheet No. 2 for P.C.P. Reference Diagram)
 4. (R) indicates radial line
 5. (NR) indicates non-radial line
 6. (RB) indicates reference bearing
 7. O.R. - Official Records Book
 8. (CDD) - Two Rivers East Community Development District
 9. D.&A.E. - Drainage and Access Easement
 10. R/W - Right-of-way
 11. (P) U.E. - (Public) Utility Easement
 12. L.A.&O.S. - Landscape Area and Open Space
 13. S.W.F.W.M.D. - Southwest Florida Water Management District Wetland Line

Wetland Conservation Area Note:
Wetlands Conservation Areas as shown hereon may be subject to certain restrictions found in: Pasco County Land Development Code, Southwest Florida Water Management District (S.W.F.W.M.D.) Environmental Resource Permit, and/or the United States Army Corps of Engineers (C.O.E.) Permit.

CURVE DATA TABLE					
NO.	RADIUS	DELTA	ARC	CHORD	BEARING
9	20.00	90°00'00"	31.42	28.28	S.41°30'00"E.
10	75.00	16°33'28"	21.67	21.60	N.85°13'15"E.
15	1000.00	39°13'46"	684.68	671.39	N.16°06'53"W.
17	1000.00	12°00'00"	209.44	209.06	N.27°00'00"W.
18	1000.00	24°30'00"	427.61	424.36	N.08°45'00"W.
19	100.00	16°33'29"	28.90	28.80	N.85°13'15"E.
20	300.00	27°27'11"	143.74	142.37	N.82°43'36"E.
21	300.00	45°27'11"	237.99	231.80	N.73°43'36"E.
38	1025.00	20°28'14"	368.21	364.27	N.20°02'07"W.
39	1025.00	12°06'29"	216.61	216.20	N.24°13'00"W.
40	1025.00	08°21'45"	149.60	149.47	N.13°58'53"W.
41	1025.00	02°14'24"	40.07	40.07	N.08°40'48"W.
42	1025.00	02°14'24"	40.07	40.07	N.08°26'24"W.
43	1025.00	02°14'24"	40.07	40.07	N.04°12'00"W.
44	1025.00	02°14'24"	40.07	40.07	N.01°57'36"W.
45	1025.00	02°14'24"	40.07	40.07	N.00°18'48"E.
46	1025.00	02°08'00"	37.57	37.57	N.02°27'00"E.
47	125.00	16°33'29"	36.12	36.00	S.85°13'15"W.
48	20.00	90°00'00"	31.42	28.28	S.48°30'00"W.
49	975.00	00°40'00"	11.34	11.34	S.03°10'00"W.
50	975.00	03°53'14"	66.15	66.14	S.00°53'23"W.
51	975.00	07°02'50"	119.92	119.85	S.04°34'39"E.
52	85.00	08°51'11"	32.89	32.87	S.86°58'24"E.
53	70.00	28°28'32"	31.14	30.89	S.24°30'30"E.
54	960.00	03°15'11"	54.51	54.50	S.13°23'19"E.
55	70.00	31°10'59"	38.10	37.63	S.00°34'35"W.
56	25.00	127°10'04"	55.49	44.78	S.47°24'58"E.
57	325.00	27°27'11"	155.72	154.24	N.82°43'36"E.
58	275.00	08°51'11"	32.89	32.87	S.86°58'24"E.
59	275.00	13°36'00"	65.28	65.12	N.82°48'00"E.
60	275.00	13°36'00"	65.28	65.12	N.69°12'00"E.
61	275.00	11°24'00"	54.72	54.63	N.56°42'00"E.
199	1040.00	10°45'03"	195.14	194.86	S.24°51'39"E.
200	1040.00	02°40'35"	48.58	48.57	S.20°49'25"E.
214	25.00	41°51'11"	18.26	17.86	S.52°51'50"W.
216	25.00	78°49'20"	34.83	32.08	N.86°37'03"W.
217	25.00	62°35'06"	27.51	25.97	N.60°10'20"W.
218	25.00	66°02'28"	28.82	27.25	N.20°45'12"E.



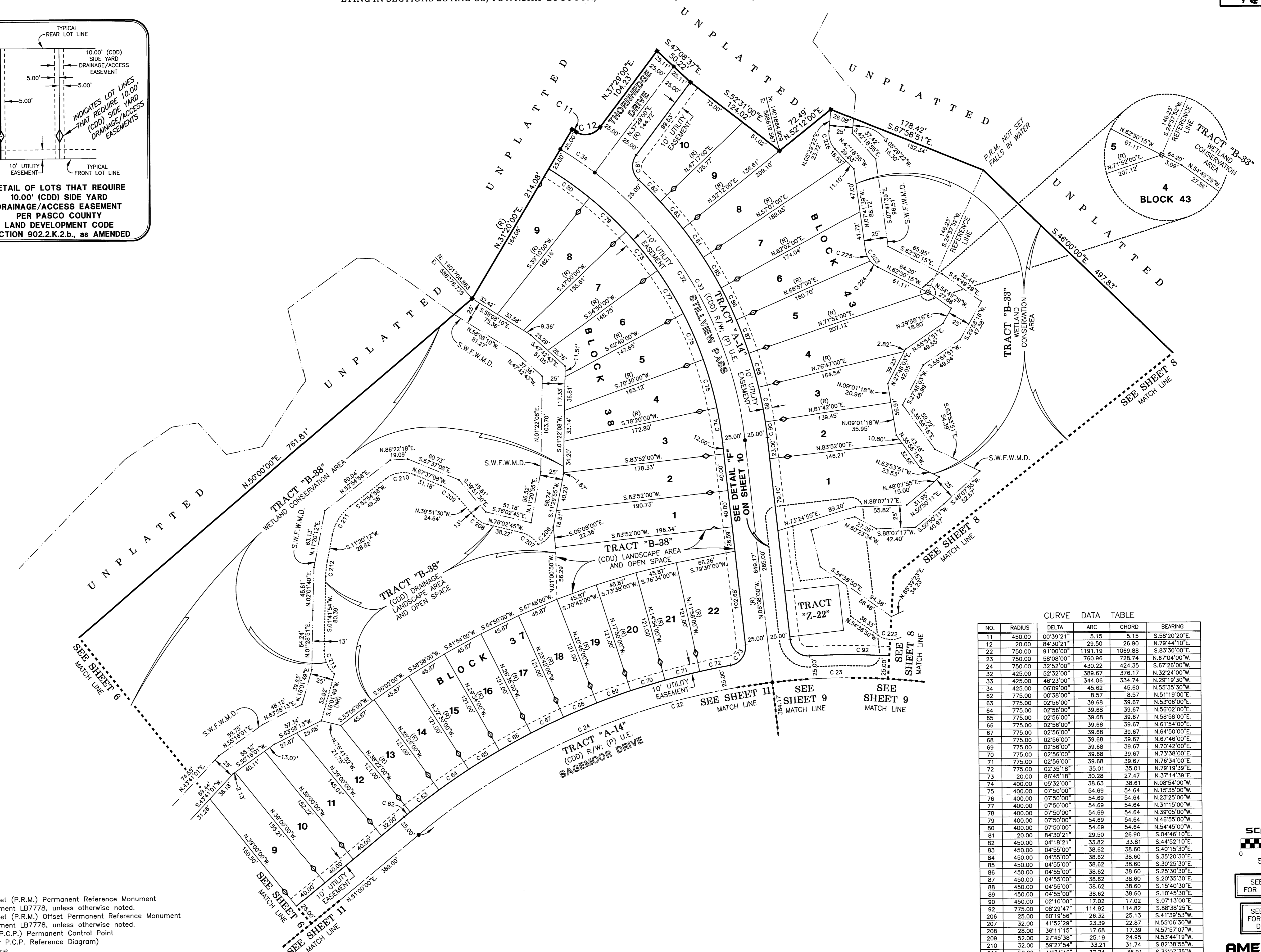
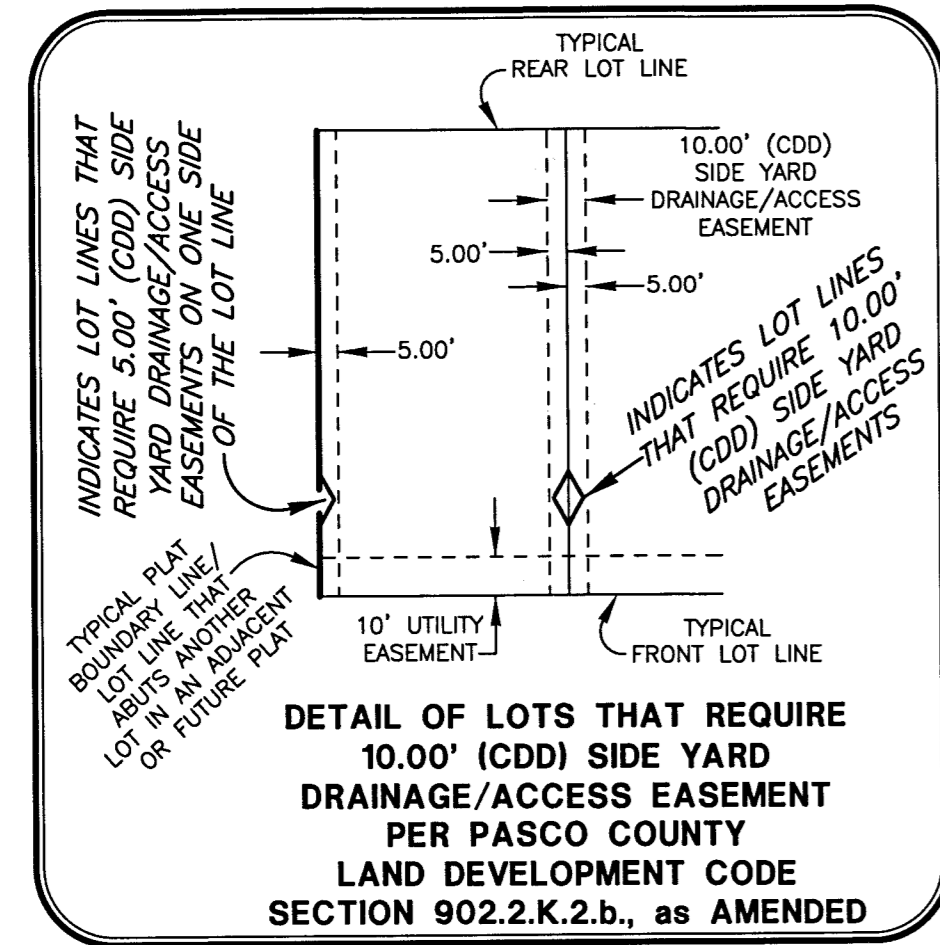
SEE SHEET 3 OF 12 FOR BASIS OF BEARING

SEE SHEET 2 OF 12 FOR PARALLEL OFFSET DIMENSIONS NOTE

AMERRITT, INC.
LAND SURVEYING & MAPPING
Certificate of Authorization Number LB 7778
3010 W. Azelea Street, Suite 150
Tampa, FL 33609
PHONE (813) 221-5200

TWO RIVERS PARCEL F2 PHASE 1

LYING IN SECTIONS 28 AND 33, TOWNSHIP 26 SOUTH, RANGE 21 EAST, PASCO COUNTY, FLORIDA



CURVE DATA TABLE

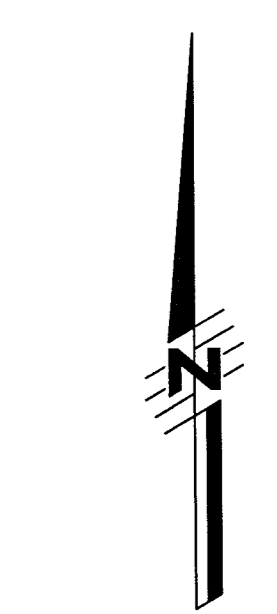
NO.	RADIUS	DELTA	ARC	CHORD	BEARING
11	450.00	00°39'21"	5.15	5.15	S.58°20'20"E.
12	20.00	84°30'21"	29.50	26.90	N.79°44'10"E.
22	750.00	91°00'00"	1191.19	1069.88	S.83°30'00"E.
23	750.00	58°08'00"	760.96	728.74	N.67°04'00"W.
24	750.00	32°52'00"	430.22	424.35	S.67°28'00"W.
32	425.00	52°32'00"	389.67	376.17	N.32°24'00"W.
33	425.00	46°23'00"	344.06	334.74	N.29°19'30"W.
34	425.00	06°09'00"	45.62	45.60	N.55°35'30"W.
62	775.00	00°38'00"	8.57	8.57	N.51°19'00"E.
63	775.00	02°56'00"	39.68	39.67	N.53°06'00"E.
64	775.00	02°56'00"	39.68	39.67	N.56°02'00"E.
65	775.00	02°56'00"	39.68	39.67	N.58°58'00"E.
66	775.00	02°56'00"	39.68	39.67	N.61°54'00"E.
67	775.00	02°56'00"	39.68	39.67	N.64°50'00"E.
68	775.00	02°56'00"	39.68	39.67	N.67°46'00"E.
69	775.00	02°56'00"	39.68	39.67	N.70°42'00"E.
70	775.00	02°56'00"	39.68	39.67	N.73°38'00"E.
71	775.00	02°56'00"	39.68	39.67	N.76°34'00"E.
72	775.00	02°35'18"	35.01	35.01	N.79°19'39"E.
73	20.00	86°45'18"	30.28	27.47	N.37°14'39"E.
74	400.00	05°32'00"	38.63	38.61	N.08°54'00"W.
75	400.00	07°50'00"	54.69	54.64	N.15°35'00"W.
76	400.00	07°50'00"	54.69	54.64	N.23°25'00"W.
77	400.00	07°50'00"	54.69	54.64	N.31°15'00"W.
78	400.00	07°50'00"	54.69	54.64	N.39°05'00"W.
79	400.00	07°50'00"	54.69	54.64	N.46°55'00"W.
80	400.00	07°50'00"	54.69	54.64	N.54°45'00"W.
81	20.00	84°30'21"	29.50	26.90	S.04°46'10"E.
82	450.00	04°18'21"	33.82	33.81	S.44°52'10"E.
83	450.00	04°55'00"	38.62	38.60	S.40°15'30"E.
84	450.00	04°55'00"	38.62	38.60	S.35°20'30"E.
85	450.00	04°55'00"	38.62	38.60	S.30°25'30"E.
86	450.00	04°55'00"	38.62	38.60	S.25°30'30"E.
87	450.00	04°55'00"	38.62	38.60	S.20°35'30"E.
88	450.00	04°55'00"	38.62	38.60	S.15°40'30"E.
89	450.00	04°55'00"	38.62	38.60	S.10°45'30"E.
90	450.00	02°10'00"	17.02	17.02	S.07°13'00"E.
92	775.00	08°29'47"	114.82	114.82	S.88°38'25"E.
206	25.00	60°19'56"	26.32	25.13	S.41°39'53"W.
207	32.00	41°52'29"	23.36	22.87	N.55°08'30"W.
208	28.00	36°11'15"	17.68	17.39	N.57°57'07"W.
209	52.00	27°45'38"	25.19	24.95	N.53°44'19"W.
210	52.00	59°27'54"	33.21	31.74	S.82°38'55"W.
211	52.00	41°34'46"	37.74	36.91	S.32°07'35"W.
212	102.00	09°38'18"	17.16	17.14	S.06°31'03"W.
213	32.00	50°44'09"	28.34	27.42	S.23°40'10"E.
222	25.00	59°43'48"	26.06	24.90	N.84°28'44"W.
223	25.00	55°08'36"	24.06	23.14	N.35°15'57"W.
224	25.00	24°23'46"	10.64	10.56	N.50°38'23"W.
225	25.00	30°44'51"	13.42	13.26	N.23°04'04"W.
226	25.00	47°48'17"	20.86	20.26	N.18°24'46"W.

LEGEND

- Symbol ■ indicates Set (P.R.M.) Permanent Reference Monument 4"x4" Concrete Monument LB7778, unless otherwise noted.
- Symbol □ indicates Set (P.R.M.) Offset Permanent Reference Monument 4"x4" Concrete Monument LB7778, unless otherwise noted.
- Symbol ● indicates (P.C.P.) Permanent Control Point (See Sheet No. 2 for P.C.P. Reference Control)
- (R) indicates radial line
- (NR) indicates non-radial line
- (RB) indicates reference bearing
- O.R. - Official Records Book
- (CDD) - Two Rivers East Community Development District
- D.&A.E. - Drainage and Access Easement
- (R/W) - Right-of-way
- (P) U.E. - (Public) Utility Easement
- S.W.F.W.M.D. - Southwest Florida Water Management District Wetland Line

Wetland Conservation Area Note:

Wetland Conservation Areas as shown hereon may be subject to certain restrictions found in: Pasco County Land Development Code, Southwest Florida Water Management District (S.W.F.W.M.D.) Environmental Resource Permit, and/or the United States Army Corps of Engineers (C.O.E.) Permit.



SCALE: 1" = 50'
SCALE IN FEET

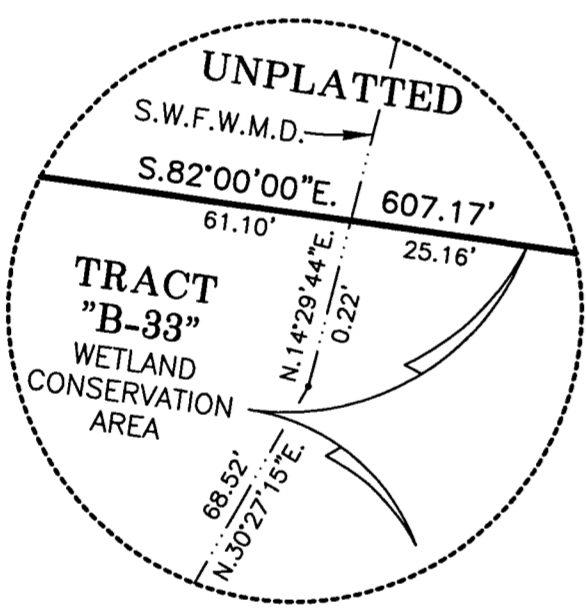
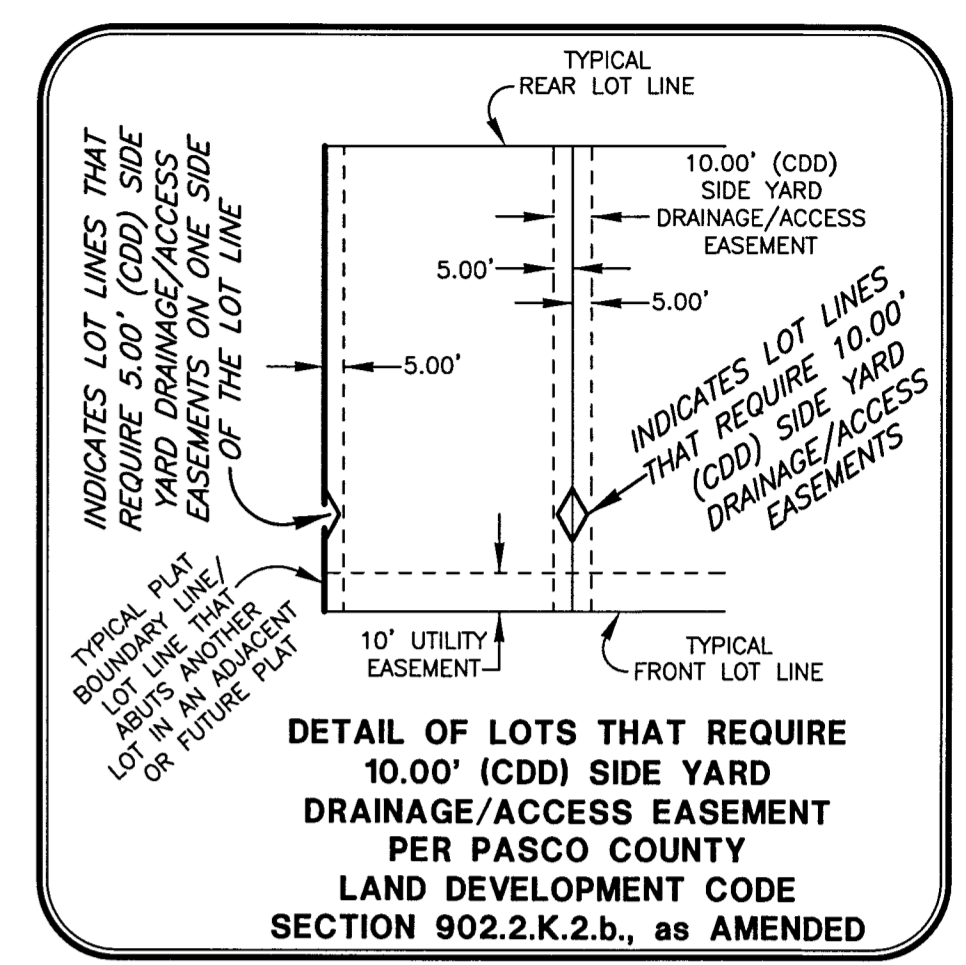
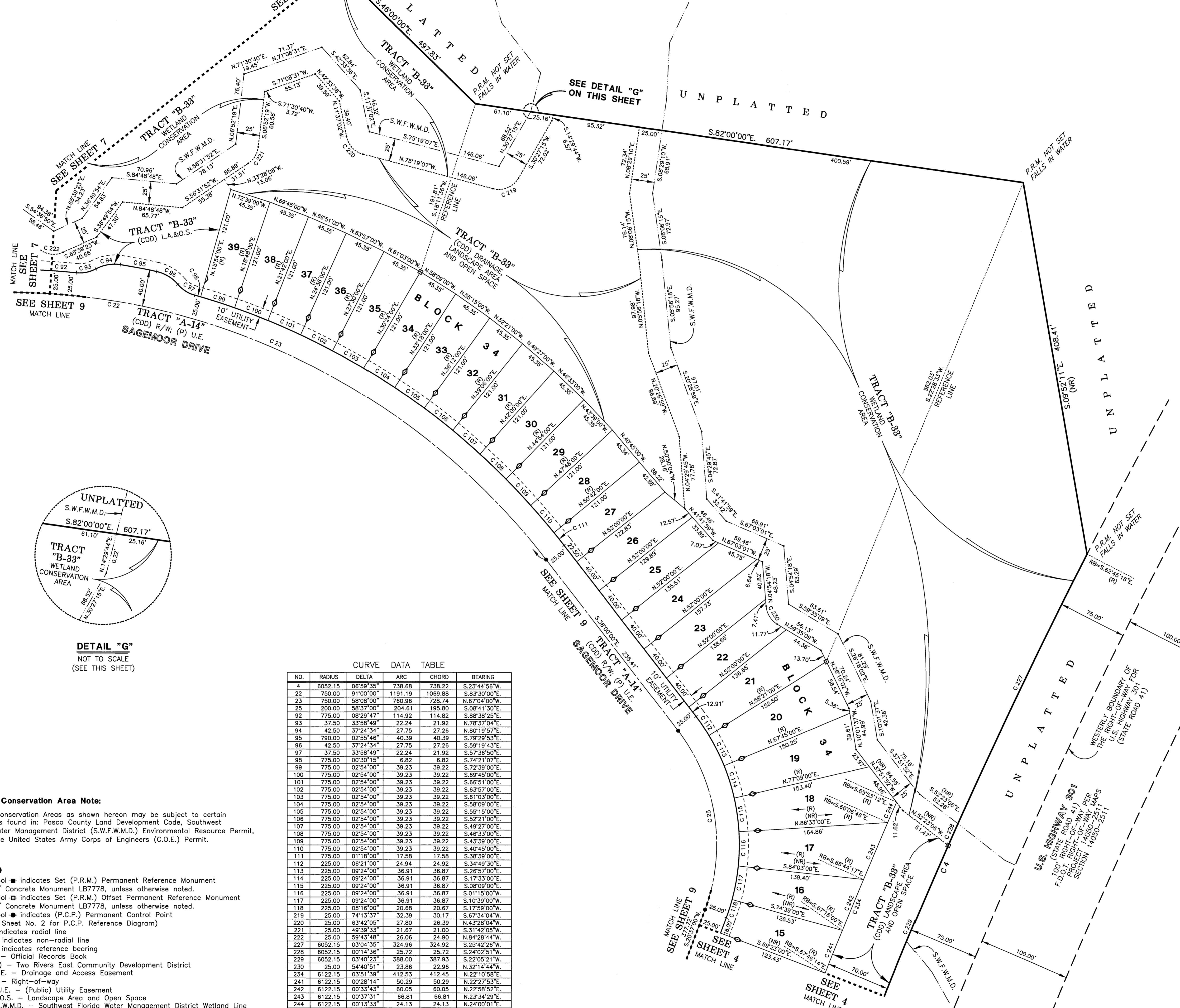
SEE SHEET 3 OF 12 FOR BASIS OF BEARINGS

SEE SHEET 2 OF 12 FOR PARALLEL OFFSET DIMENSIONS NOTE

AMERRITT, INC.
LAND SURVEYING & MAPPING
Certificate of Authorization Number LB 7778
3010 W. Azeele Street, Suite 150
Tampa, FL 33609
PHONE (813) 221-5200

TWO RIVERS PARCEL F2 PHASE 1

LYING IN SECTIONS 28 AND 33, TOWNSHIP 26 SOUTH, RANGE 21 EAST, PASCO COUNTY, FLORIDA

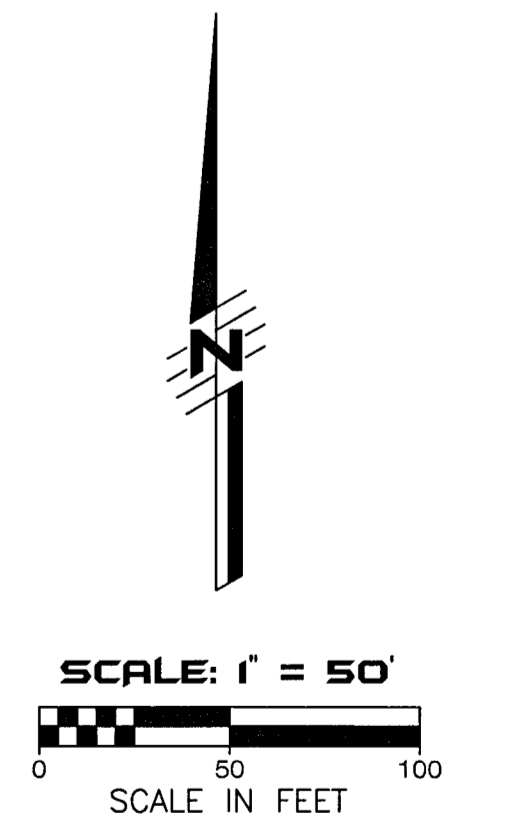


DETAIL "G"
 NOT TO SCALE
 (SEE THIS SHEET)

NO.	RADIUS	DELTA	ARC	CHORD	BEARING
4	6052.15	06°59'35"	738.88	738.22	S.23°44'56\"
22	750.00	91°00'00"	1191.19	1069.88	S.83°30'00\"
23	750.00	58°08'00"	760.96	728.74	N.67°04'00\"
25	200.00	58°37'00"	204.61	195.80	S.08°41'30\"
92	775.00	08°29'47"	114.92	114.82	S.88°38'25\"
93	37.50	33°58'49"	22.24	21.92	N.78°37'04\"
94	42.50	37°24'34"	27.75	27.26	N.80°19'57\"
95	790.00	02°55'46"	40.39	40.39	S.79°29'53\"
96	42.50	37°24'34"	27.75	27.28	S.59°19'43\"
97	37.50	33°58'49"	22.24	21.92	S.57°36'50\"
98	775.00	00°30'15"	6.82	6.82	S.74°21'07\"
99	775.00	02°54'00"	39.23	39.22	S.72°39'00\"
100	775.00	02°54'00"	39.23	39.22	S.69°45'00\"
101	775.00	02°54'00"	39.23	39.22	S.66°51'00\"
102	775.00	02°54'00"	39.23	39.22	S.63°57'00\"
103	775.00	02°54'00"	39.23	39.22	S.61°03'00\"
104	775.00	02°54'00"	39.23	39.22	S.58°09'00\"
105	775.00	02°54'00"	39.23	39.22	S.55°15'00\"
106	775.00	02°54'00"	39.23	39.22	S.52°21'00\"
107	775.00	02°54'00"	39.23	39.22	S.49°27'00\"
108	775.00	02°54'00"	39.23	39.22	S.46°33'00\"
109	775.00	02°54'00"	39.23	39.22	S.43°39'00\"
110	775.00	02°54'00"	39.23	39.22	S.40°45'00\"
111	775.00	01°18'00"	17.58	17.58	S.38°39'00\"
112	225.00	06°21'00"	24.94	24.92	S.34°49'30\"
113	225.00	09°24'00"	36.91	36.87	S.26°57'00\"
114	225.00	09°24'00"	36.91	36.87	S.17°33'00\"
115	225.00	09°24'00"	36.91	36.87	S.08°09'00\"
116	225.00	09°24'00"	36.91	36.87	S.01°15'00\"
117	225.00	09°24'00"	36.91	36.87	S.04°39'00\"
118	225.00	05°16'00"	20.68	20.67	S.17°59'00\"
219	25.00	74°13'37"	32.39	30.17	S.67°34'04\"
220	25.00	63°42'05"	27.80	26.39	N.43°28'04\"
221	25.00	49°39'33"	21.67	21.00	S.31°42'05\"
222	25.00	59°43'48"	26.06	24.90	N.84°28'44\"
227	6052.15	03°04'35"	324.96	324.92	S.25°42'28\"
228	6052.15	00°14'36"	25.72	25.72	S.24°02'51\"
229	6052.15	03°40'23"	388.00	387.93	S.22°05'21\"
230	25.00	54°40'51"	23.86	22.96	N.32°14'44\"
234	6122.15	03°51'39"	412.53	412.45	N.22°10'58\"
241	6122.15	00°28'14"	50.29	50.29	N.22°27'53\"
242	6122.15	00°33'43"	60.05	60.05	N.22°58'52\"
243	6122.15	00°37'31"	66.81	66.81	N.23°34'29\"
244	6122.15	00°13'33"	24.13	24.13	N.24°00'01\"

Wetland Conservation Area Note:
 Wetland Conservation Areas as shown hereon may be subject to certain restrictions found in: Pasco County Land Development Code, Southwest Florida Water Management District (S.W.F.W.M.D.) Environmental Resource Permit, and/or the United States Army Corps of Engineers (C.O.E.) Permit.

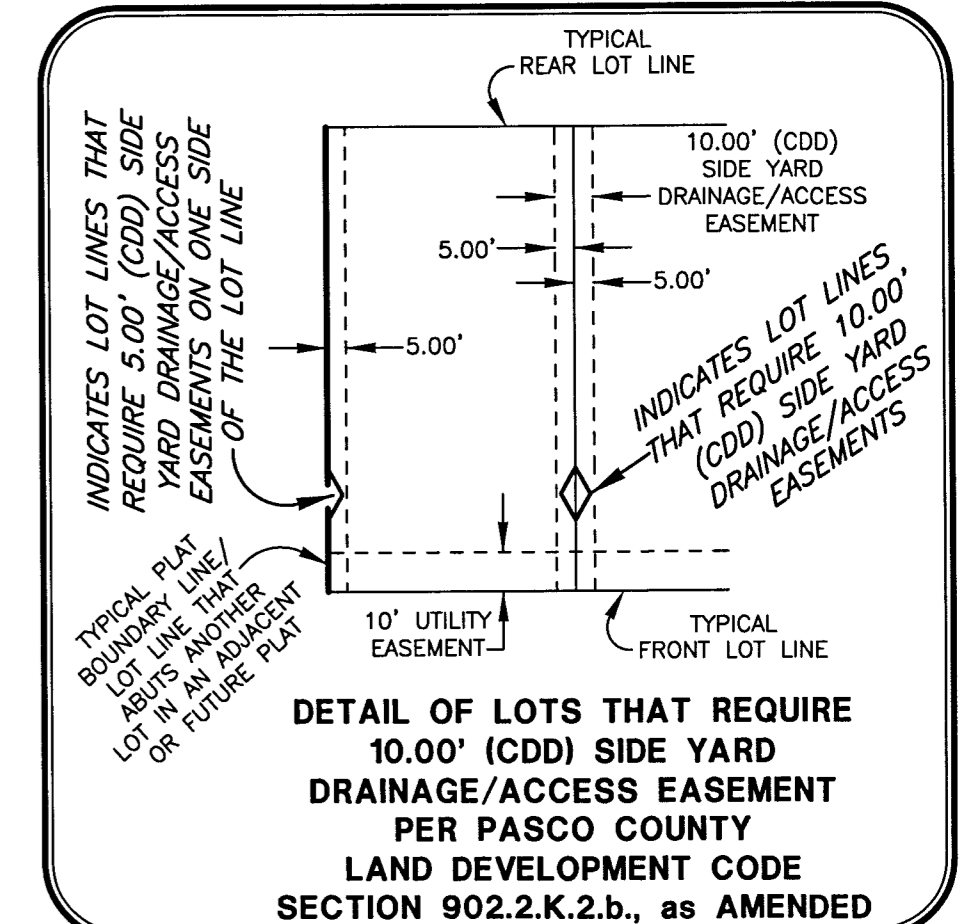
- LEGEND**
- Symbol \blacksquare indicates Set (P.R.M.) Permanent Reference Monument
 - Symbol \square indicates Set (P.R.M.) Offset Permanent Reference Monument
 - Symbol \square indicates Set (P.R.M.) Permanent Control Point (See Sheet No. 2 for P.C.P. Reference Diagram)
 - (R) indicates radial line
 - (NR) indicates non-radial line
 - (RB) indicates reference bearing
 - O.R. - Official Records Book
 - (CDD) - Two Rivers East Community Development District
 - D.&A.E. - Drainage and Access Easement
 - R/W - Right-of-way
 - (P) U.E. - (Public) Utility Easement
 - L.A.&O.S. - Landscape Area and Open Space
 - S.W.F.W.M.D. - Southwest Florida Water Management District Wetland Line



SEE SHEET 3 OF 12 FOR BASIS OF BEARINGS
 SEE SHEET 2 OF 12 FOR PARALLEL OFFSET DIMENSIONS NOTE

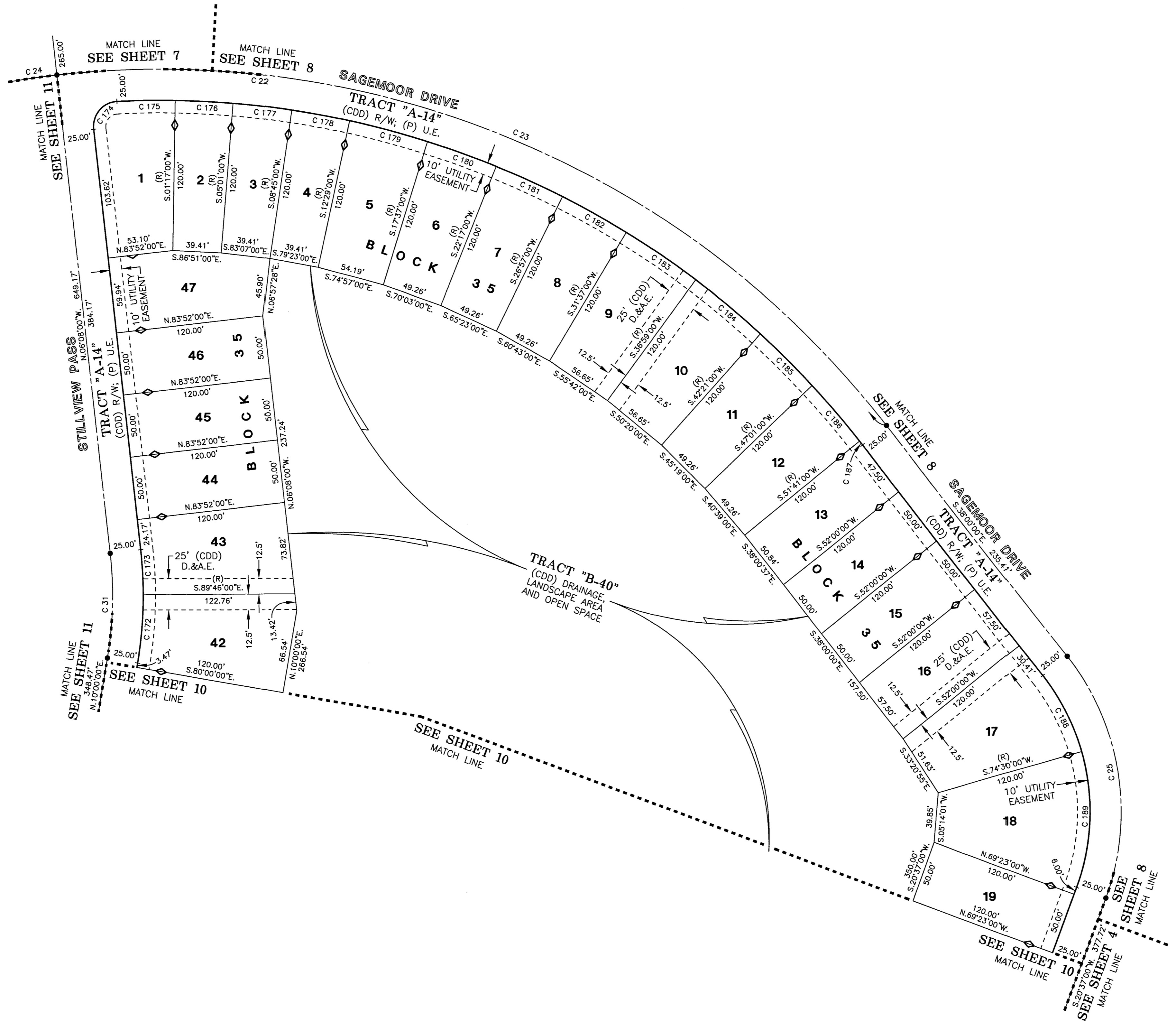
TWO RIVERS PARCEL F2 PHASE 1

LYING IN SECTIONS 28 AND 33, TOWNSHIP 26 SOUTH, RANGE 21 EAST, PASCO COUNTY, FLORIDA



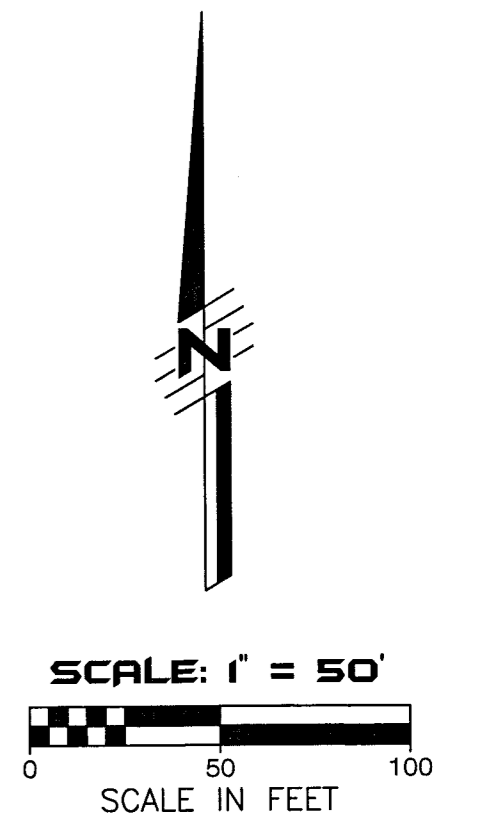
CURVE DATA TABLE

NO.	RADIUS	DELTA	ARC	CHORD	BEARING
22	750.00	91°00'00"	1191.19	1069.88	S.83°30'00"E.
23	750.00	58°08'00"	760.96	723.74	N.67°04'00"W.
24	750.00	32°52'00"	430.22	424.35	S.67°28'00"W.
25	200.00	58°37'00"	204.61	195.80	S.08°41'30"E.
31	300.00	16°08'00"	84.47	84.20	N.01°56'00"E.
172	325.00	09°46'00"	55.40	55.33	N.05°07'00"E.
173	325.00	06°22'00"	36.11	36.10	N.02°57'00"W.
174	20.00	93°39'35"	32.69	29.17	N.40°41'47"E.
175	725.00	03°45'25"	47.54	47.53	N.89°24'17"E.
176	725.00	03°44'00"	47.24	47.23	S.86°51'00"E.
177	725.00	03°44'00"	47.24	47.23	S.83°07'00"E.
178	725.00	03°44'00"	47.24	47.23	S.79°23'00"E.
179	725.00	05°08'00"	64.96	64.93	S.74°57'00"E.
180	725.00	04°40'00"	59.05	59.03	S.70°03'00"E.
181	725.00	04°40'00"	59.05	59.03	S.65°23'00"E.
182	725.00	04°40'00"	59.05	59.03	S.60°43'00"E.
183	725.00	05°22'00"	67.91	67.88	S.55°42'00"E.
184	725.00	05°22'00"	67.91	67.88	S.50°20'00"E.
185	725.00	04°40'00"	59.05	59.03	S.45°19'00"E.
186	725.00	04°40'00"	59.05	59.03	S.40°39'00"E.
187	725.00	00°19'00"	4.01	4.01	S.38°09'30"E.
188	175.00	22°30'00"	68.72	68.28	S.26°45'00"E.
189	175.00	38°07'00"	110.31	108.49	S.02°33'30"W.



- LEGEND**
- Symbol ■ indicates Set (P.R.M.) Permanent Reference Monument
 - Symbol □ indicates Set (P.R.M.) Offset Permanent Reference Monument
 - Symbol ● indicates (P.C.P.) Permanent Control Point (See Sheet No. 2 for P.C.P. Reference Diagram)
 - (R) indicates radial line
 - (NR) indicates non-radial line
 - (RB) indicates reference bearing
 - O.R. - Official Records Book
 - (CDD) - Two Rivers East Community Development District
 - D.&A.E. - Drainage and Access Easement
 - R/W - Right-of-way
 - (P) U.E. - (Public) Utility Easement
 - S.W.F.W.M.D. - Southwest Florida Water Management District Wetland Line

Wetland Conservation Area Note:
Wetland Conservation Areas as shown hereon may be subject to certain restrictions found in: Pasco County Land Development Code, Southwest Florida Water Management District (S.W.F.W.M.D.) Environmental Resource Permit, and/or the United States Army Corps of Engineers (C.O.E.) Permit.

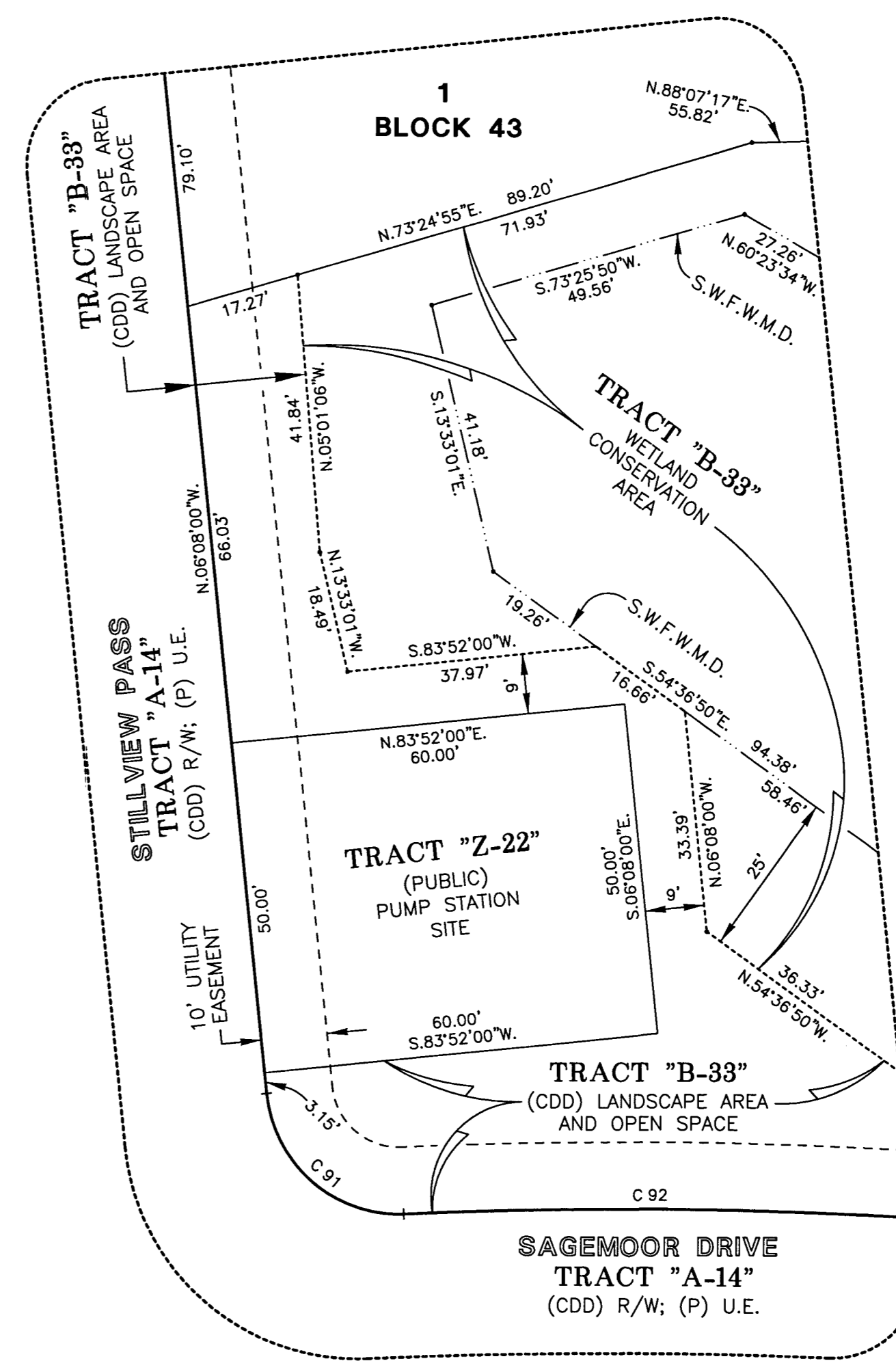
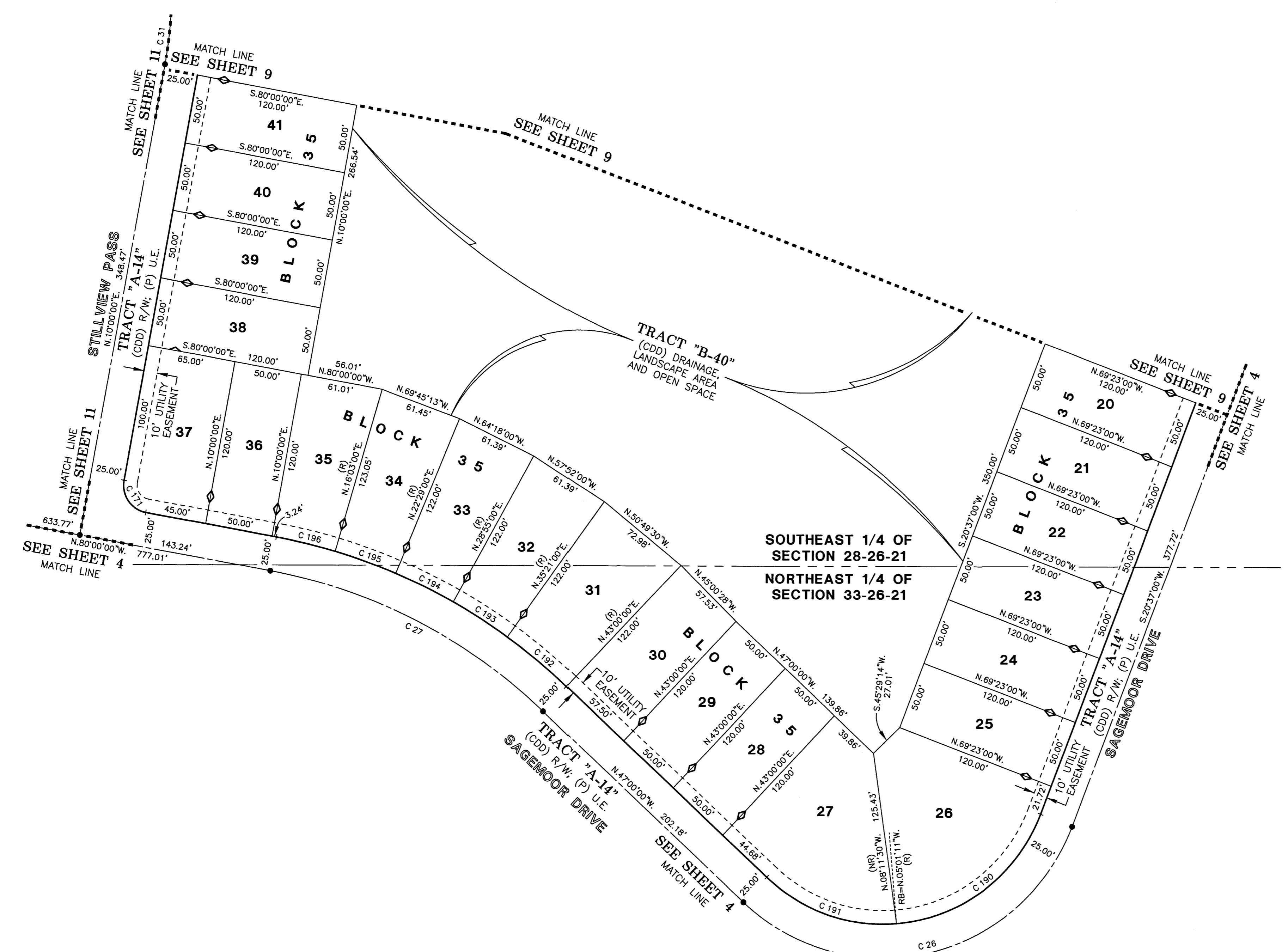
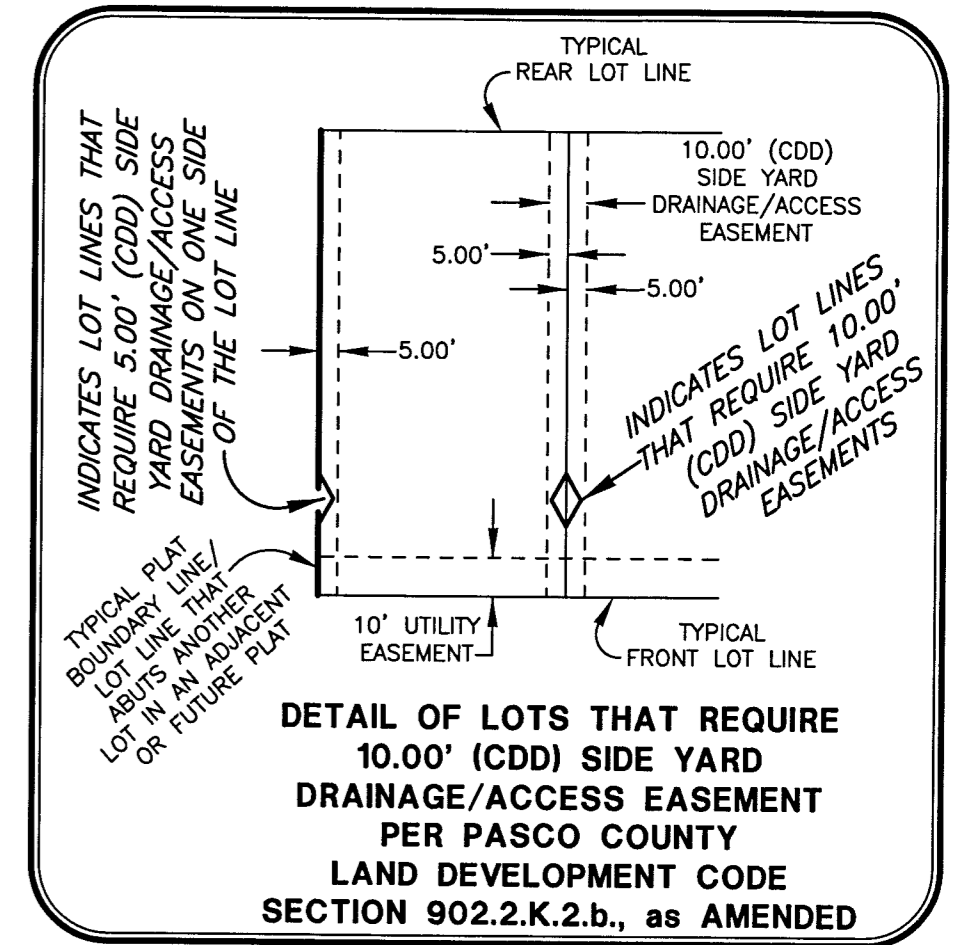


SEE SHEET 3 OF 12 FOR BASIS OF BEARINGS
SEE SHEET 2 OF 12 FOR PARALLEL OFFSET DIMENSIONS NOTE

AMERRITT, INC.
LAND SURVEYING & MAPPING
Certificate of Authorization Number LB 7778
3010 W. Azule Street, Suite 150
Tampa, FL 33609
PHONE (813) 221-5200

TWO RIVERS PARCEL F2 PHASE 1
 LYING IN SECTIONS 28 AND 33, TOWNSHIP 26 SOUTH, RANGE 21 EAST, PASCO COUNTY, FLORIDA

CURVE DATA TABLE					
NO.	RADIUS	DELTA	ARC	CHORD	BEARING
26	150.00	112°23'00"	294.22	249.27	S.76°48'30"W.
27	400.00	33°00'00"	230.38	227.21	N.63°30'00"W.
31	300.00	16°08'00"	84.47	84.20	N.01°58'00"E.
91	20.00	86°45'18"	30.28	27.47	S.49°30'39"E.
92	775.00	08°29'47"	114.92	114.82	S.88°38'25"E.
171	20.00	90°00'00"	31.42	28.28	N.35°00'00"W.
190	125.00	64°21'49"	140.42	133.15	S.52°47'55"W.
191	125.00	48°01'11"	104.76	101.72	N.71°00'35"W.
192	425.00	07°39'00"	56.75	56.70	N.50°49'30"W.
193	425.00	06°26'00"	47.72	47.70	N.51°52'00"W.
194	425.00	06°26'00"	47.72	47.70	N.64°18'00"W.
195	425.00	06°26'00"	47.72	47.70	N.70°44'00"W.
196	425.00	06°03'00"	44.88	44.86	N.76°58'30"W.

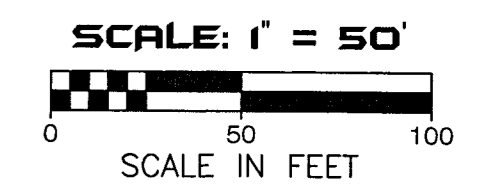


- LEGEND**
- Symbol ■ indicates Set (P.R.M.) Permanent Reference Monument
 - 4"x4" Concrete Monument LB7778, unless otherwise noted.
 - Symbol ⊕ indicates Set (P.R.M.) Offset Permanent Reference Monument
 - 4"x4" Concrete Monument LB7778, unless otherwise noted.
 - Symbol ● indicates (P.C.P.) Permanent Control Point
 - (See Sheet No. 2 for P.C.P. Reference Diagram)
 - (R) indicates radial line
 - (NR) indicates non-radial line
 - (RB) indicates reference bearing
 - O.R. - Official Records Book
 - (CDD) - Two Rivers East Community Development District
 - D.&A.E. - Drainage and Access Easement
 - R/W - Right-of-way
 - (P) U.E. - (Public) Utility Easement
 - S.W.F.W.M.D. - Southwest Florida Water Management District Wetland Line

Wetland Conservation Area Note:

Wetland Conservation Areas as shown hereon may be subject to certain restrictions found in: Pasco County Land Development Code, Southwest Florida Water Management District (S.W.F.W.M.D.) Environmental Resource Permit, and/or the United States Army Corps of Engineers (C.O.E.) Permit.

DETAIL "F"
 NOT TO SCALE
 (SEE SHEET 7)

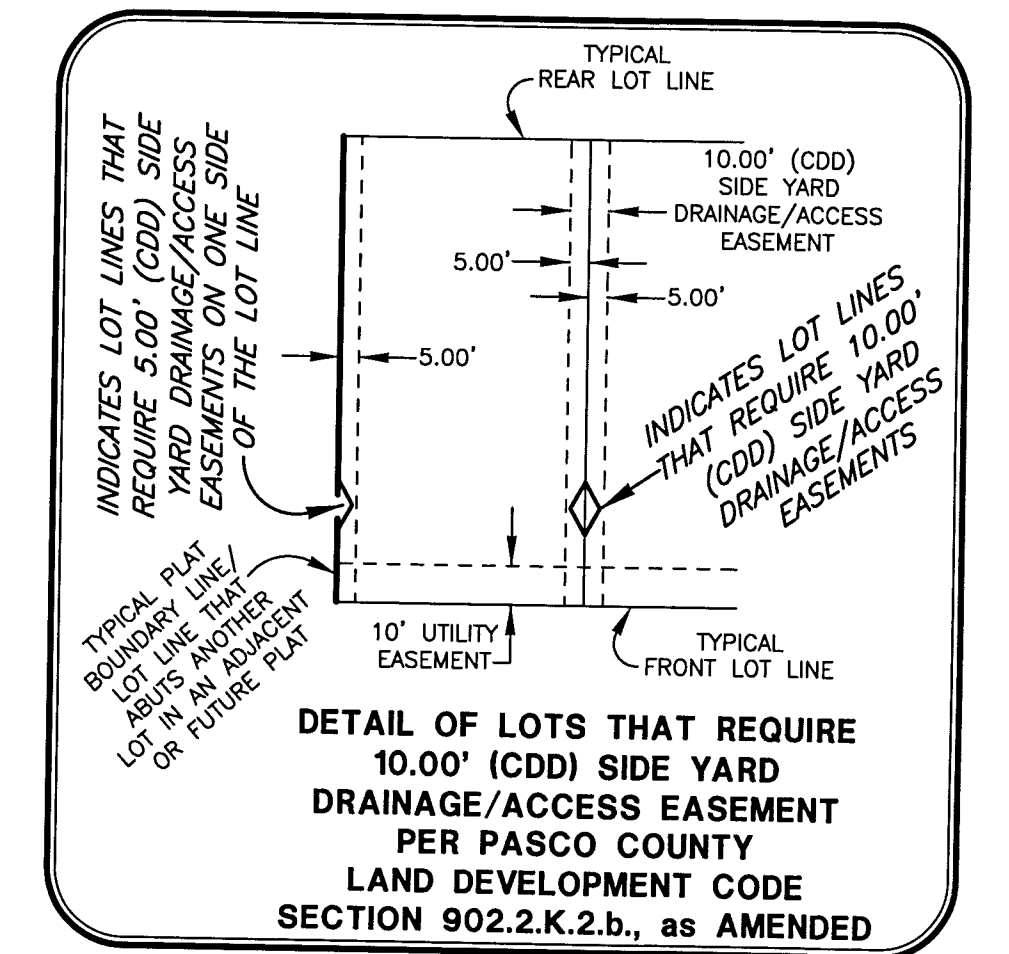


SEE SHEET 3 OF 12 FOR BASIS OF BEARINGS

SEE SHEET 2 OF 12 FOR PARALLEL OFFSET DIMENSIONS NOTE

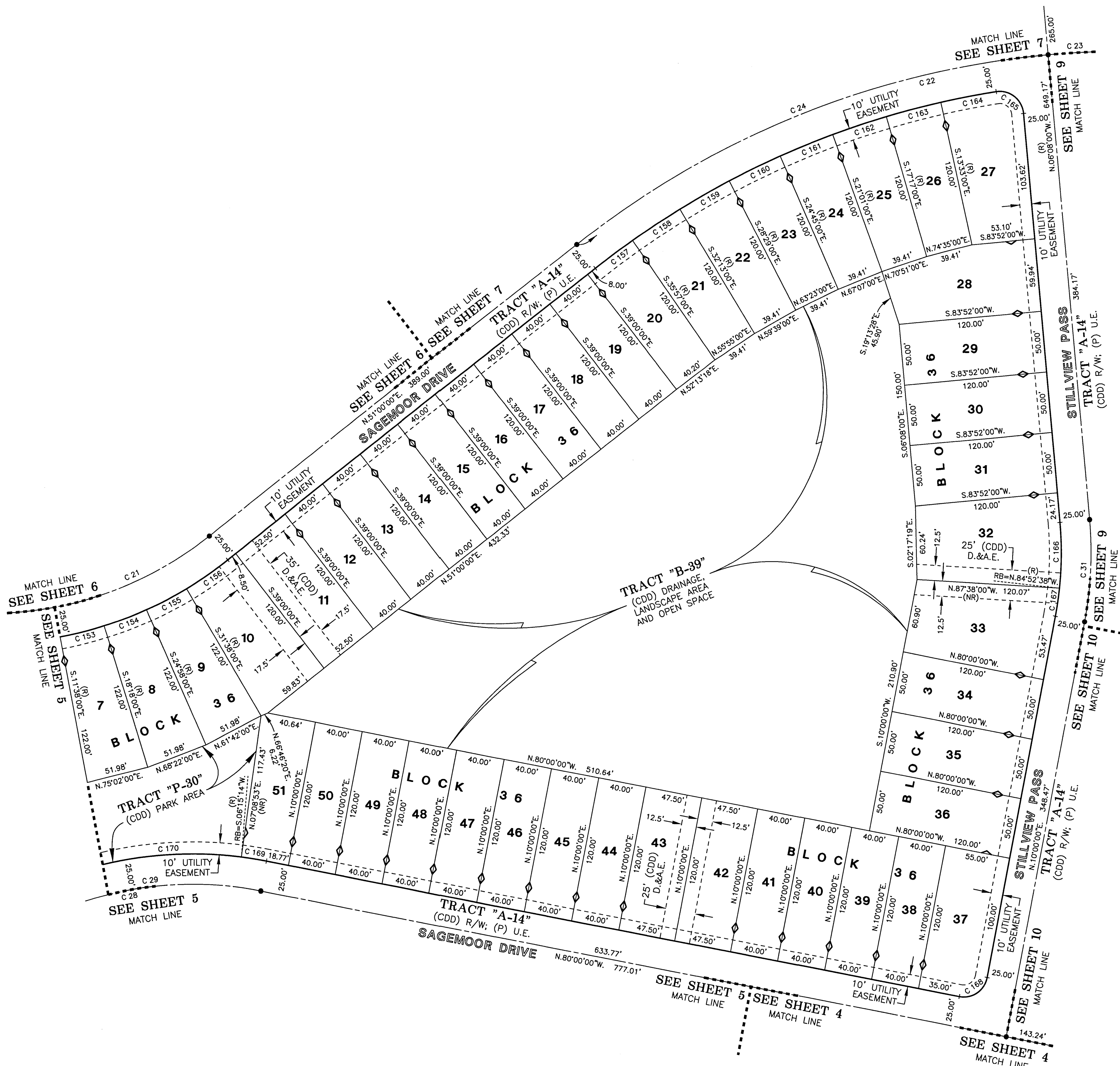
AMERRITT, INC.
 LAND SURVEYING & MAPPING
 Certificate of Authorization Number LB 7778
 3010 W. Azalea Street, Suite 150
 Tampa, FL 33609
 PHONE (813) 221-5200

TWO RIVERS PARCEL F2 PHASE 1
 LYING IN SECTIONS 28 AND 33, TOWNSHIP 26 SOUTH, RANGE 21 EAST, PASCO COUNTY, FLORIDA



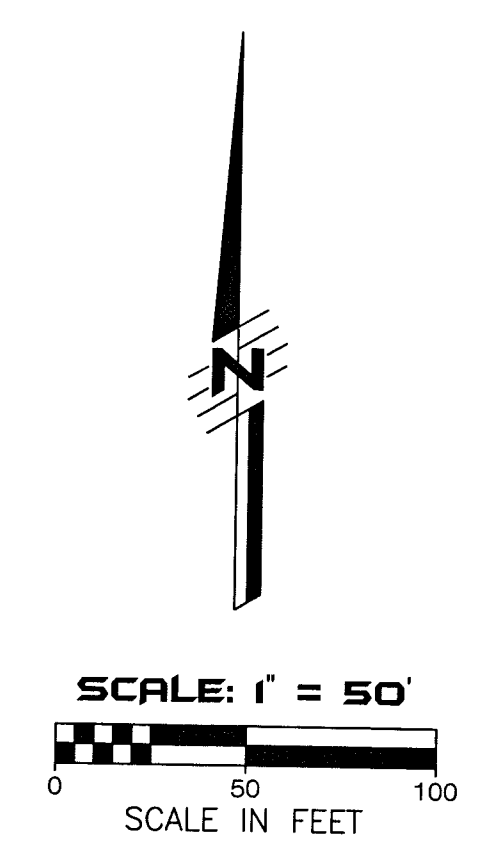
CURVE DATA TABLE

NO.	RADIUS	DELTA	ARC	CHORD	BEARING
21	300.00	45°27'11"	237.99	231.80	N.73°43'36"E.
22	750.00	9°10'00"	1191.19	1069.88	S.83°30'00"E.
23	750.00	58°08'00"	780.86	728.74	S.67°28'00"W.
24	750.00	32°52'00"	430.22	424.35	S.61°08'29"W.
28	300.00	77°43'02"	406.83	376.44	S.61°08'29"W.
29	300.00	70°02'32"	366.74	344.33	S.64°58'44"W.
31	300.00	16°08'00"	84.47	84.20	N.01°56'00"E.
153	325.00	06°40'00"	37.82	37.79	N.75°02'00"E.
154	325.00	06°40'00"	37.82	37.79	N.68°22'00"E.
155	325.00	06°40'00"	37.82	37.79	N.61°42'00"E.
156	325.00	07°22'00"	41.79	41.76	N.54°41'00"E.
157	725.00	03°03'00"	38.59	38.59	N.52°31'30"E.
158	725.00	03°44'00"	47.24	47.23	N.55°55'00"E.
159	725.00	03°44'00"	47.24	47.23	N.59°39'00"E.
160	725.00	03°44'00"	47.24	47.23	N.63°23'00"E.
161	725.00	03°44'00"	47.24	47.23	N.67°07'00"E.
162	725.00	03°44'00"	47.24	47.23	N.74°35'00"E.
163	725.00	03°44'00"	47.24	47.23	N.70°51'00"E.
164	725.00	03°45'25"	47.54	47.53	N.78°19'43"E.
165	20.00	93°38'35"	32.69	29.17	S.52°57'47"E.
166	275.00	11°15'22"	54.02	53.94	S.00°30'19"E.
167	275.00	04°52'38"	23.41	23.40	S.07°33'41"W.
168	20.00	90°00'00"	31.42	28.28	S.55°00'00"W.
169	325.00	03°44'46"	21.25	21.25	N.81°52'23"W.
170	325.00	57°21'36"	325.37	311.95	S.67°34'25"W.



- LEGEND**
- Symbol ■ indicates Set (P.R.M.) Permanent Reference Monument 4"x4" Concrete Monument LB7778, unless otherwise noted.
 - Symbol □ indicates Set (P.R.M.) Offset Permanent Reference Monument 4"x4" Concrete Monument LB7778, unless otherwise noted.
 - Symbol ● indicates (P.C.P.) Permanent Control Point (See Sheet No. 2 for P.C.P. Reference Diagram)
 - (R) indicates radial line
 - (NR) indicates non-radial line
 - (RB) indicates reference bearing
 - O.R. - Official Records Book
 - (CDD) - Two Rivers East Community Development District
 - D.&A.E. - Drainage and Access Easement
 - R/W - Right-of-way
 - (P) U.E. - (Public) Utility Easement
 - S.W.F.W.M.D. - Southwest Florida Water Management District Wetland Line

Wetland Conservation Area Note:
 Wetland Conservation Areas as shown hereon may be subject to certain restrictions found in: Pasco County Land Development Code, Southwest Florida Water Management District (S.W.F.W.M.D.) Environmental Resource Permit, and/or the United States Army Corps of Engineers (C.O.E.) Permit.



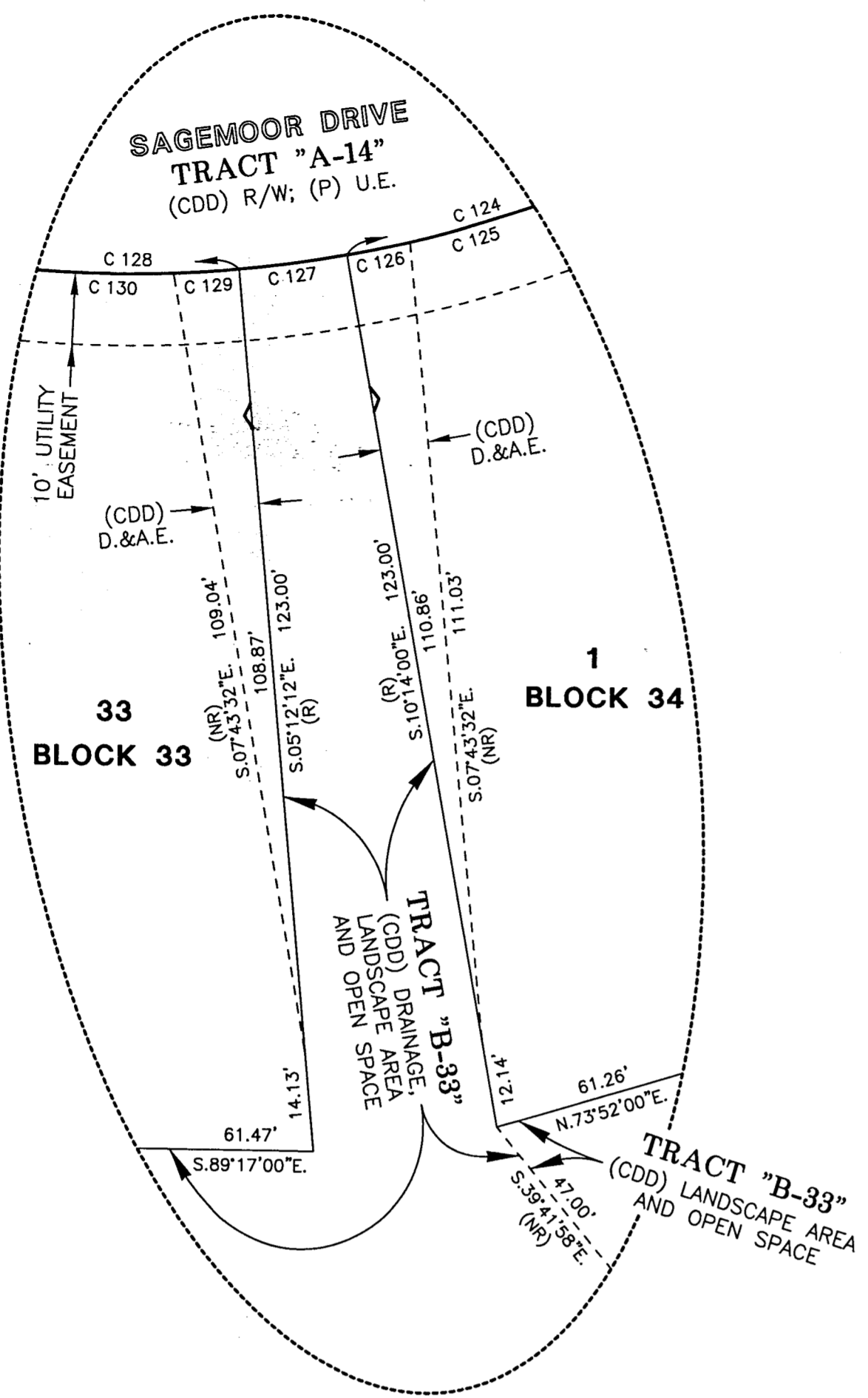
SEE SHEET 3 OF 12 FOR BASIS OF BEARINGS

SEE SHEET 2 OF 12 FOR PARALLEL OFFSET DIMENSIONS NOTE

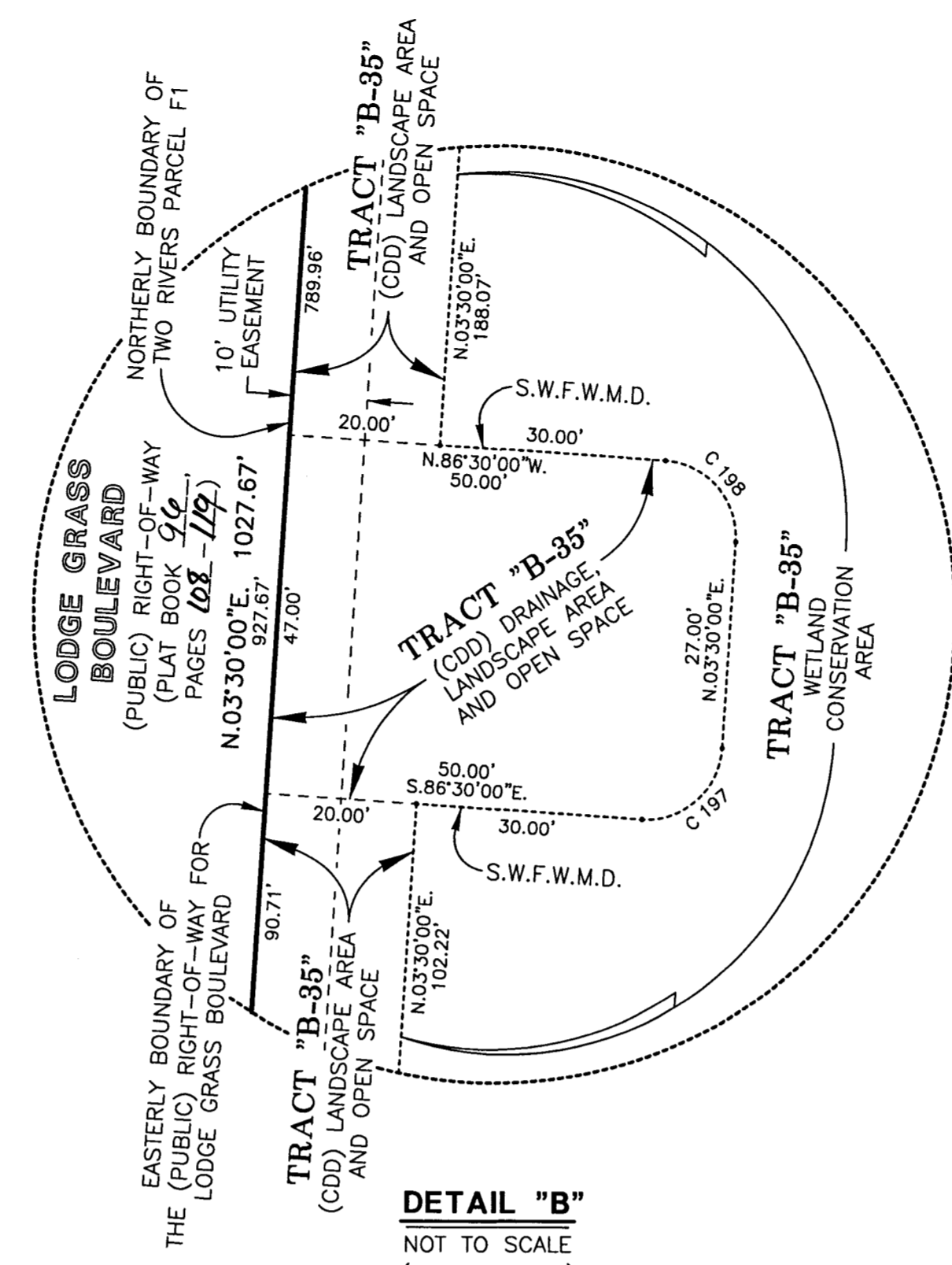
AMERRITT, INC.
 LAND SURVEYING & MAPPING
 Certificate of Authorization Number LB 7778
 3010 W. Azulee Street, Suite 150
 Tampa, FL 33609
 PHONE (813) 221-5200

TWO RIVERS PARCEL F2 PHASE 1

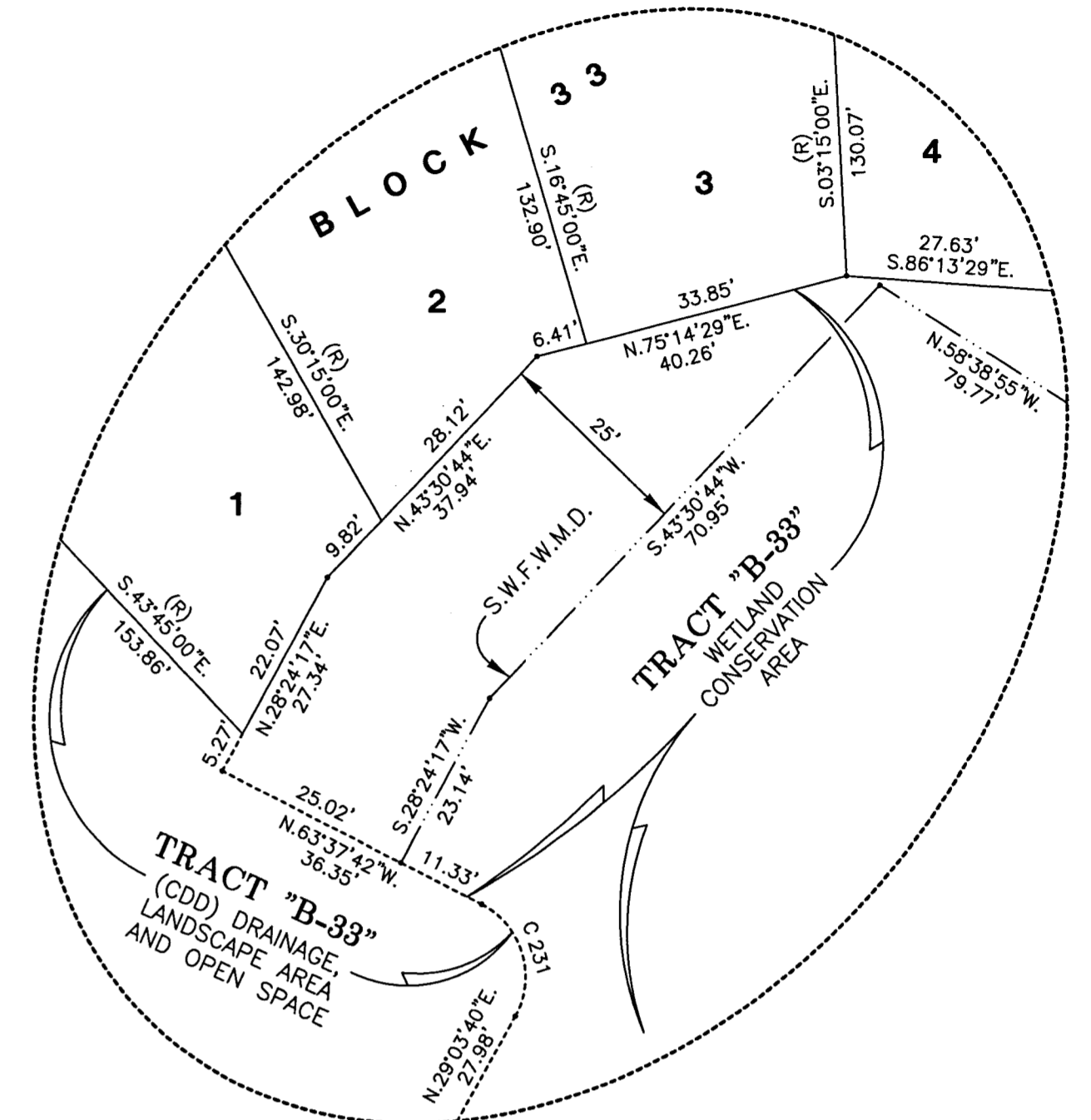
LYING IN SECTIONS 28 AND 33, TOWNSHIP 26 SOUTH, RANGE 21 EAST, PASCO COUNTY, FLORIDA



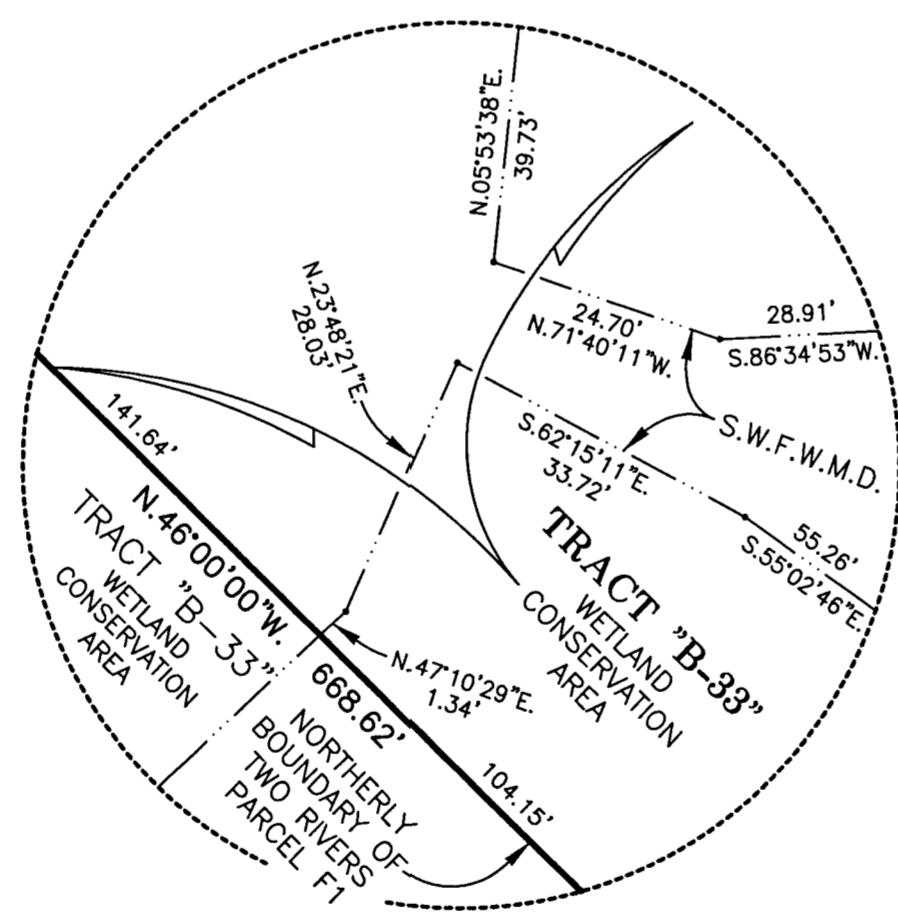
DETAIL "A"
NOT TO SCALE
(SEE SHEET 4)



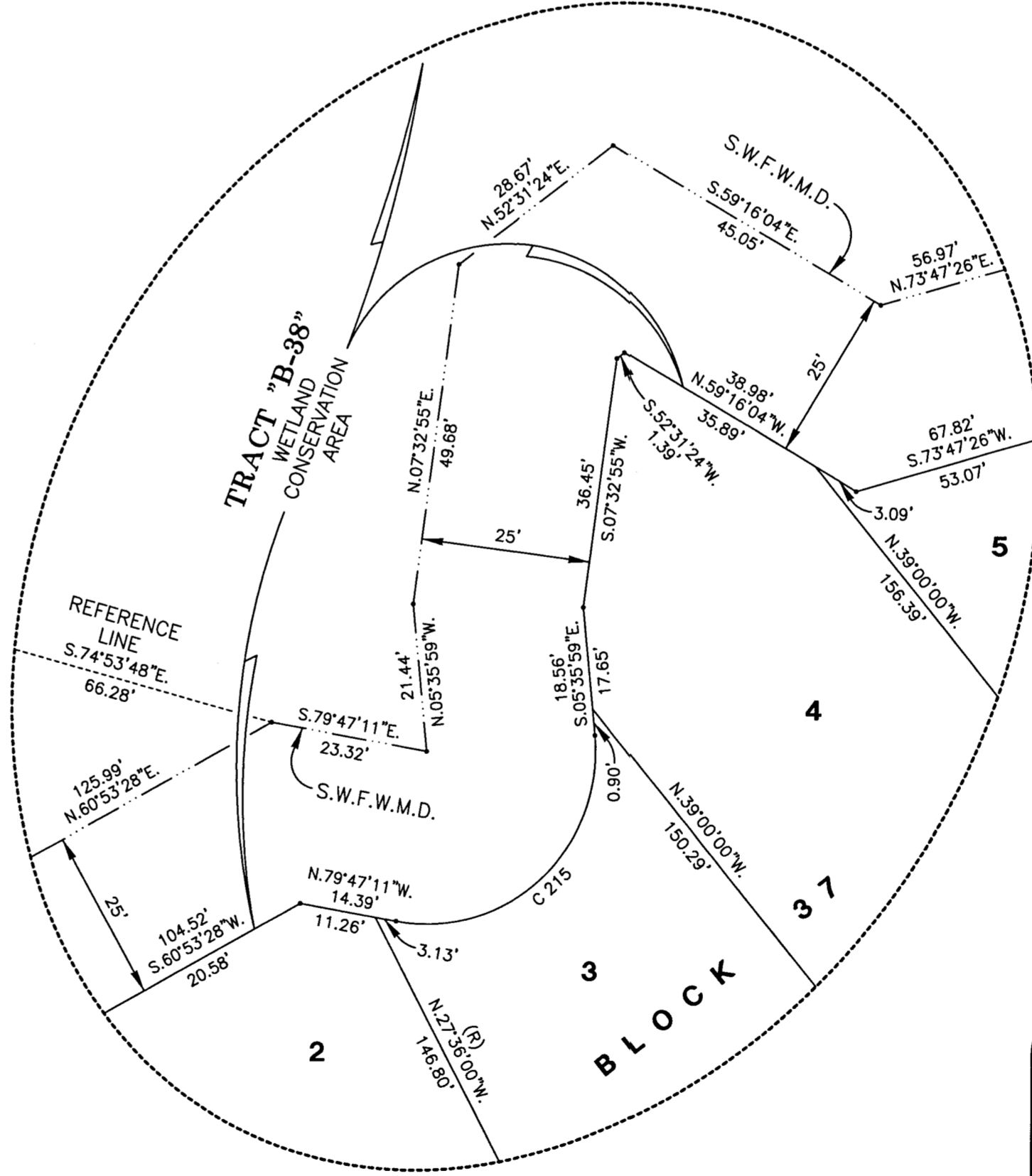
DETAIL "B"
NOT TO SCALE
(SEE SHEET 5)



DETAIL "C"
NOT TO SCALE
(SEE SHEET 5)



DETAIL "D"
NOT TO SCALE
(SEE SHEET 5)

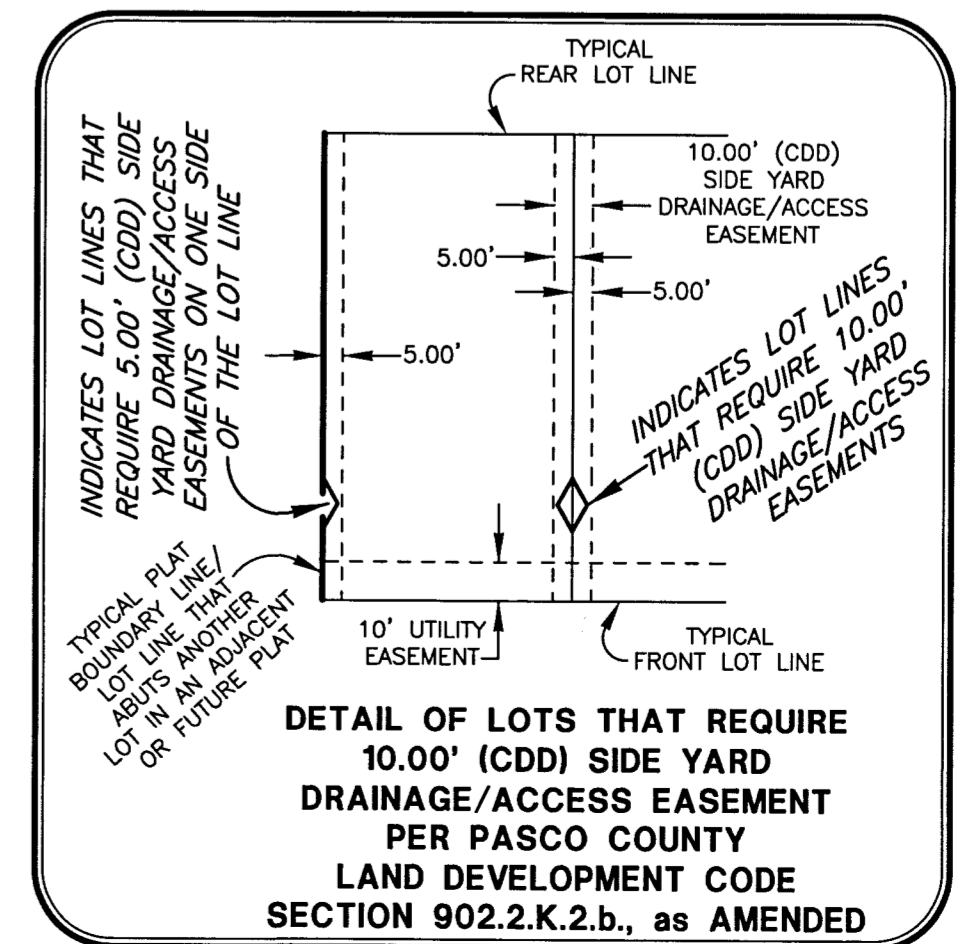


DETAIL "E"
NOT TO SCALE
(SEE SHEET 6)

Wetland Conservation Area Note:
Wetland Conservation Areas as shown hereon may be subject to certain restrictions found in: Pasco County Land Development Code, Southwest Florida Water Management District (S.W.F.W.M.D.) Environmental Resource Permit, and/or the United States Army Corps of Engineers (C.O.E.) Permit.

- LEGEND**
1. Symbol \blacksquare indicates Set (P.R.M.) Permanent Reference Monument 4"x4" Concrete Monument LB7778, unless otherwise noted.
 2. Symbol \square indicates Set (P.R.M.) Offset Permanent Reference Monument 4"x4" Concrete Monument LB7778, unless otherwise noted.
 3. Symbol \bullet indicates (P.C.P.) Permanent Control Point (See Sheet No. 2 for P.C.P. Reference Diagram)
 4. (R) indicates radial line
 5. (NR) indicates non-radial line
 6. (RB) indicates reference bearing
 7. O.R. - Official Records Book
 8. (CDD) - Two Rivers East Community Development District
 9. D.&A.E. - Drainage and Access Easement
 10. R/W - Right-of-way
 11. (P) U.E. - (Public) Utility Easement
 12. S.W.F.W.M.D. - Southwest Florida Water Management District Wetland Line

CURVE DATA TABLE					
NO.	RADIUS	DELTA	ARC	CHORD	BEARING
124	175.00	11°48'00"	36.04	35.98	S.73°52'00"W.
125	175.00	10°12'33"	31.18	31.14	S.73°04'17"W.
126	175.00	01°35'27"	4.86	4.86	S.78°58'17"W.
127	175.00	05°01'48"	15.36	15.36	S.82°16'54"W.
128	175.00	11°50'24"	36.16	36.10	N.89°17'00"W.
129	175.00	01°34'17"	4.80	4.80	S.85°34'56"W.
130	175.00	10°16'07"	31.36	31.32	N.88°29'52"W.
197	10.00	90°00'00"	15.71	14.14	N.48°30'00"E.
198	10.00	90°00'00"	15.71	14.14	N.41°30'00"E.
215	25.00	105°48'48"	46.17	39.88	S.47°18'25"W.
231	10.00	92°41'22"	16.18	14.47	N.17°17'01"W.



SEE SHEET 3 OF 12 FOR BASIS OF BEARINGS

SEE SHEET 2 OF 12 FOR PARALLEL OFFSET DIMENSIONS NOTE

AMERRITT, INC.
LAND SURVEYING & MAPPING
Certificate of Authorization Number LB 7778
3010 W. Azalea Street, Suite 150
Tampa, FL 33609
PHONE (813) 221-5200