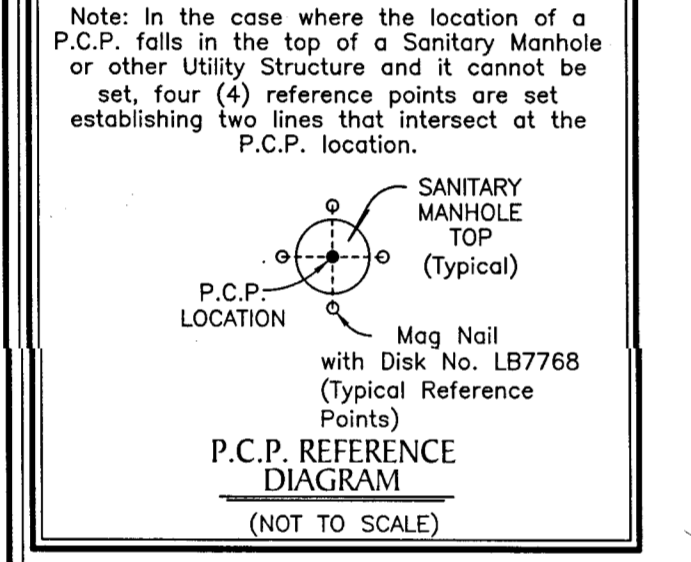
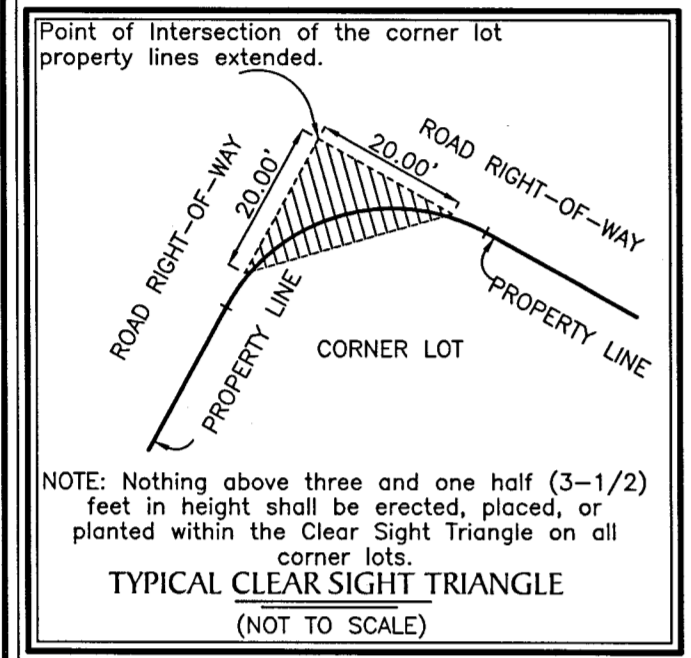
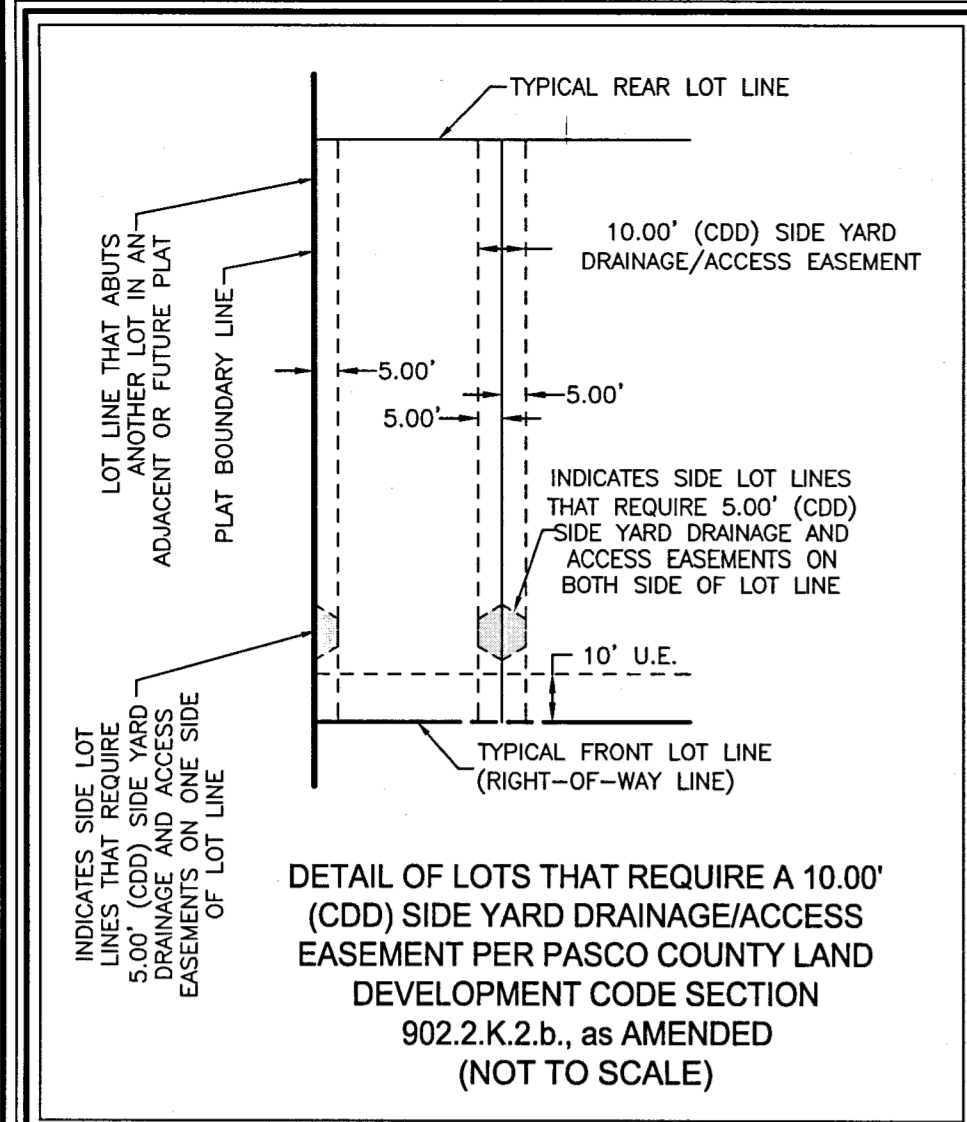


WYNDFIELDS PHASES 2A1 AND 2A2

A SUBDIVISION LYING IN SECTION 26, TOWNSHIP 26 SOUTH, RANGE 20 EAST, PASCO COUNTY, FLORIDA



LINE DATA TABLE			LINE DATA TABLE		
NO.	BEARING	LENGTH	NO.	BEARING	LENGTH
L1	S80°58'01"E	192.00'	L49	N60°51'07"E	84.27'
L2	N73°25'03"E	293.63'	L50	N69°40'32"E	84.77'
L3	S00°57'39"W	200.73'	L51	N69°36'14"E	57.91'
L4	S88°05'03"W	32.37'	L52	N66°11'31"E	30.80'
L5	S66°04'29"W	65.50'	L53	N40°43'14"W	68.28'
L6	S24°21'33"W	43.35'	L54	N23°53'33"W	34.81'
L7	S04°16'30"E	52.01'	L55	N24°52'13"E	36.79'
L8	S12°59'54"E	59.46'	L56	N36°07'07"W	89.53'
L9	S12°54'38"W	34.50'	L57	N15°42'28"W	44.33'
L10	S32°38'50"W	50.06'	L58	N09°25'55"W	88.53'
L11	S45°16'11"W	97.73'	L59	N29°03'17"W	39.62'
L12	S63°59'57"W	77.60'	L60	N04°04'21"W	73.28'
L13	S35°42'54"W	46.64'	L61	N00°45'30"E	4.21'
L14	S03°06'55"E	57.46'	L62	N05°39'22"E	34.41'
L15	S29°45'23"E	80.24'	L63	N57°38'00"E	8.18'
L16	S32°10'17"W	9.86'	L64	N42°35'39"W	82.63'
L17	S32°56'28"W	75.60'	L65	N87°00'43"W	34.43'
L18	S55°30'39"W	91.78'	L66	S71°09'46"W	29.61'
L19	S09°55'36"W	63.19'	L67	S30°50'13"W	27.44'
L20	N22°43'24"W	53.24'	L68	S62°40'57"W	34.23'
L21	N78°48'09"W	5.39'	L69	S17°31'58"E	48.25'
L22	S22°32'30"W	30.75'	L70	S29°39'30"W	63.47'
L23	S57°11'46"W	53.30'	L71	S20°27'24"W	46.48'
L24	S20°25'53"W	28.82'	L72	S16°13'29"W	79.47'
L25	S08°24'08"E	33.03'	L73	S54°03'38"W	43.50'
L26	S21°42'58"W	45.34'	L74	S83°52'08"W	35.01'
L27	S27°54'11"E	25.30'	L75	N88°02'42"W	7.03'
L28	S20°01'34"W	23.82'	L76	S34°17'11"W	124.59'
L29	S04°37'34"W	27.40'	L77	S30°50'13"W	524.70'
L30	S04°53'45"W	14.99'	L78	S09°01'27"W	65.65'
L31	S62°40'02"E	24.04'	L79	S53°05'06"E	29.93'
L32	S36°26'56"E	24.02'	L80	S79°45'14"E	69.33'
L33	S64°21'03"E	52.40'	L81	S67°58'02"E	68.30'
L34	S58°14'07"E	29.09'	L82	S36°35'05"E	63.73'
L35	S56°54'08"E	26.95'	L83	S35°41'15"E	78.89'
L36	S07°36'34"W	29.80'	L84	S49°57'24"E	69.44'
L37	S50°41'00"E	10.76'	L85	S38°09'01"E	114.06'
L38	N17°25'03"E	18.47'	L86	S41°21'14"W	148.86'
L39	N49°34'21"E	41.29'	L87	S74°00'59"W	72.27'
L40	N28°11'20"E	11.74'	L88	S81°49'48"W	64.62'
L41	N07°39'58"W	53.68'	L89	S76°29'51"W	78.78'
L42	N07°51'09"E	70.85'	L90	S71°38'57"W	65.51'
L43	N24°38'51"E	55.89'	L91	S82°26'22"W	13.44'
L44	N57°14'49"E	46.92'	L92	S18°34'57"E	160.34'
L45	N51°26'10"E	42.15'	L93	S52°24'11"E	36.00'
L46	N46°35'06"E	21.04'	L94	N73°25'03"E	434.41'
L47	N52°00'52"W	118.67'	L95	N72°09'19"E	40.05'
L48	S71°39'27"E	48.85'	L96	N73°25'03"E	104.45'

PLAT NOTES:

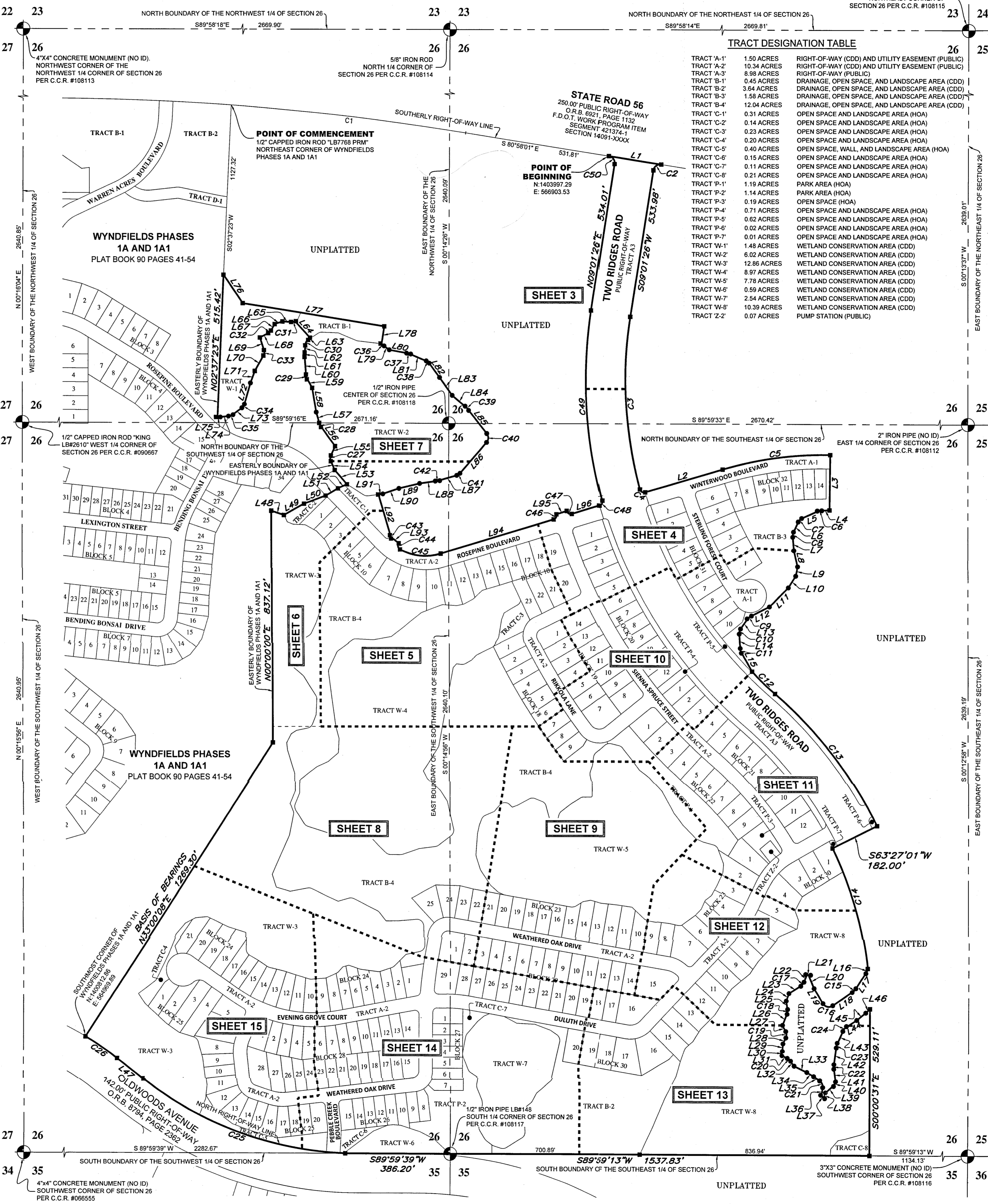
- BEARINGS SHOWN HEREON ARE GRID BEARINGS BASED ON THE EAST BOUNDARY OF WYNDFIELDS PHASE 1A AND 1A1, HAVING A GRID BEARING OF N 33°00'00"E. THE GRID BEARINGS AS SHOWN HEREON REFER TO THE STATE PLANE COORDINATE SYSTEM, NORTH AMERICAN HORIZONTAL DATUM OF 1983 (NAD 83-2011 ADJUSTMENT) AS ESTABLISHED FROM A RTK GPS NETWORK.
- THE COORDINATE VALUES SHOWN HEREON ARE BASED ON THE PASCO COUNTY PRIMARY HORIZONTAL CONTROL NETWORK AND WERE ESTABLISHED TO PASCO COUNTY SURVEYING AND MAPPING ACCEPTED METHODS AND PROCEDURES FOR ESTABLISHMENT OF HORIZONTAL SURVEYING CONTROL, AND/OR APPROVED BY THE COUNTY SURVEYOR. ORIGINATING COORDINATES: STATION X39 166' (PID AL8143).
- ALL PLATTED UTILITY EASEMENTS SHALL PROVIDE THAT SUCH EASEMENTS SHALL ALSO BE EASEMENTS FOR THE CONSTRUCTION, INSTALLATION, MAINTENANCE, AND OPERATION OF CABLE TELEVISION SERVICES; PROVIDED, HOWEVER, NO SUCH CONSTRUCTION, INSTALLATION, MAINTENANCE, AND OPERATION OF CABLE TELEVISION SERVICES SHALL INTERFERE WITH THE FACILITIES AND SERVICES OF AN ELECTRIC, TELEPHONE, GAS, OR OTHER PUBLIC UTILITY. IN THE EVENT A CABLE TELEVISION COMPANY DAMAGES THE FACILITIES OF A PUBLIC UTILITY, IT SHALL BE SOLELY RESPONSIBLE FOR THE DAMAGES. THIS SECTION SHALL NOT APPLY TO THOSE PRIVATE EASEMENTS GRANTED BY A PARTICULAR ELECTRIC, TELEPHONE, GAS, OR OTHER PUBLIC UTILITY. SUCH CONSTRUCTION, INSTALLATION, MAINTENANCE, AND OPERATION SHALL COMPLY WITH THE NATIONAL ELECTRICAL SAFETY CODE AS ADOPTED BY THE FLORIDA PUBLIC SERVICE COMMISSION.
- WETLAND CONSERVATION AREAS AS SHOWN HEREON MAY BE SUBJECT TO CERTAIN RESTRICTIONS FOUND IN: PASCO COUNTY LAND DEVELOPMENT CODE, SOUTHWEST FLORIDA WATER MANAGEMENT DISTRICT (SWFWMD) ENVIRONMENTAL RESOURCE PERMIT, AND/OR THE UNITED STATES ARMY CORPS OF ENGINEERS (C.O.E.) PERMIT.
- ALL LINES INTERSECTING A CURVE ARE RADIAL (R) UNLESS OTHERWISE NOTED AS NON-RADIAL (NR).
- A 1/2 INCH DIAMETER IRON PIPE WITH CAP NO. LB7768 WILL BE SET AT ALL LOT CORNERS, POINTS OF INTERSECTION, AND CHANGES OF DIRECTION AS REQUIRED BY CHAPTER 177 OF THE FLORIDA STATUTES WITHIN THE TIME ALLOTTED IN 177.091 (6), UNLESS PRIOR MONUMENTATION OF THE LOT CORNER IS FOUND IN PLACE.

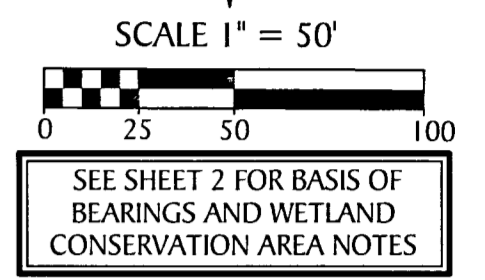
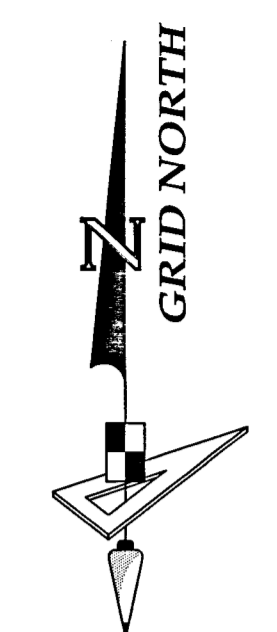
LEGEND

- Set (P.R.M.) Permanent Reference Monument
- 4"x4" Concrete Monument stamped LB7768 PRM
- Found 4"x4" Concrete Monument as noted.
- Set (P.C.P.) Permanent Control Point, Mag Nail & Disk, "LB7768 PCP"
- Set (P.R.M.) Permanent Reference Monument
- 1/2" Iron Rod with cap "LB7768 PRM" or as Noted
- (NR) --- Non-Radial
- TYP. --- Typical
- S.W.F.W.M.D. --- Southwest Florida Water Management District
- O.R.B. --- Official Records Book
- Pg(s). --- Page(s)
- U.E. --- Utility Easement
- D.A.E. --- Drainage and Access Easement
- B.E. --- Buffer Easement
- W.E. --- Wall Easement
- O/A --- Overall
- TLO --- Tie-Line Only
- C.C.R. --- Certified Corner Record
- F.D.O.T. --- Florida Department of Transportation
- CST --- Clear Sight Triangle Restriction (see detail this sheet)
- --- Side Yard Drainage/Access Easement (see detail this sheet)

NOTE: EASEMENTS, BUFFERS AND OTHER SUCH LABELS AND DIMENSIONS OF A PARALLEL NATURE AS SHOWN HEREON AND INDICATED TO THE NEAREST FOOT (IE: 5' UTILITY EASEMENT) ARE ASSUMED TO BE THE SAME DIMENSION EXTENDED TO THE NEAREST HUNDREDTH OF A FOOT WITH NO GREATER OR LESSER VALUE (IE: 5' = 5.00) (IE: 7.5' = 7.50)

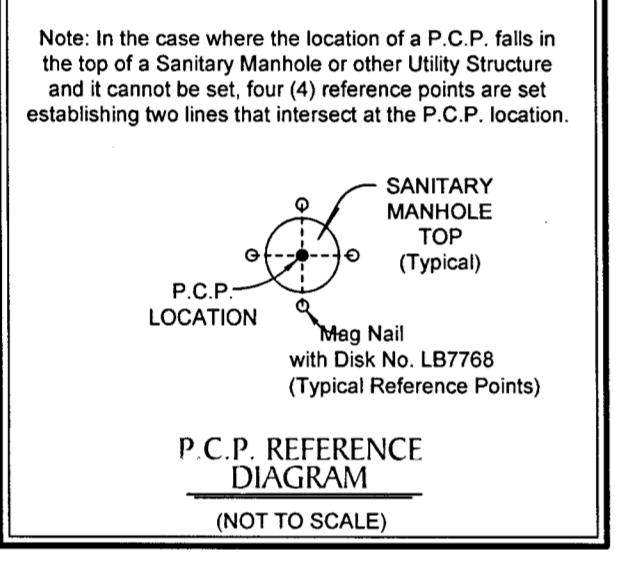
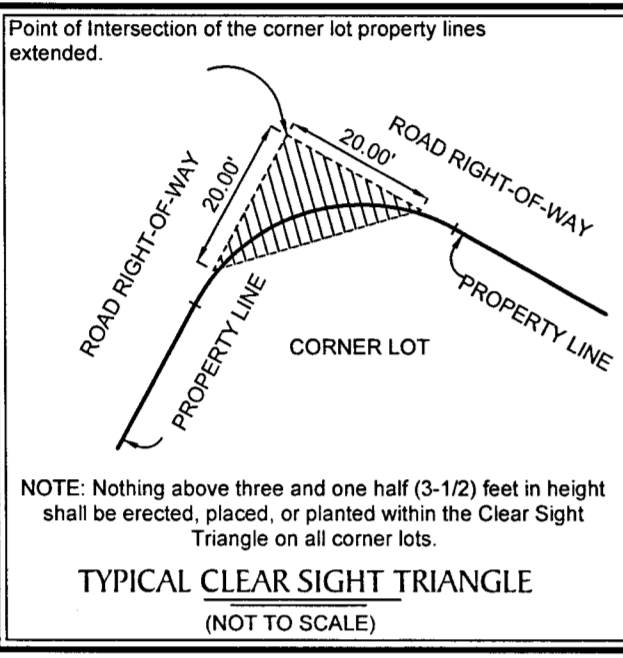
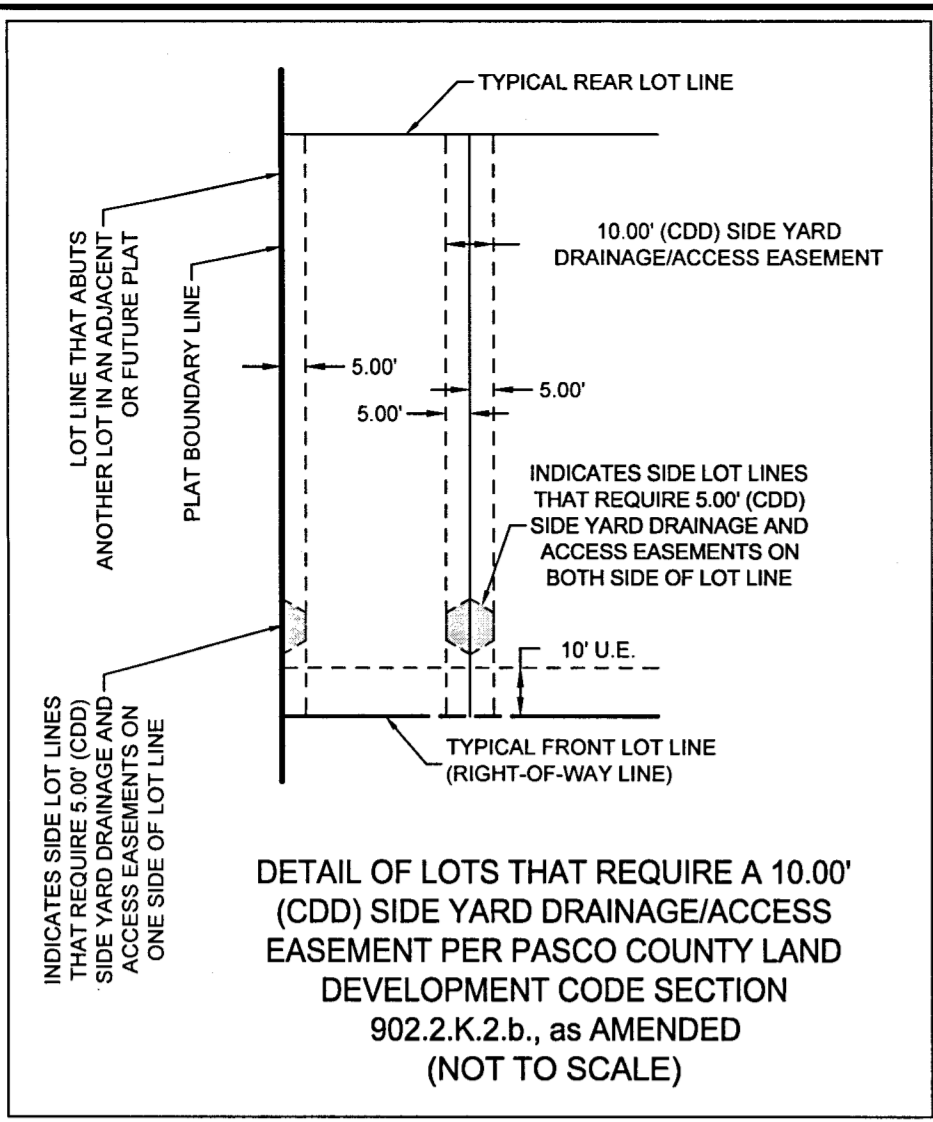
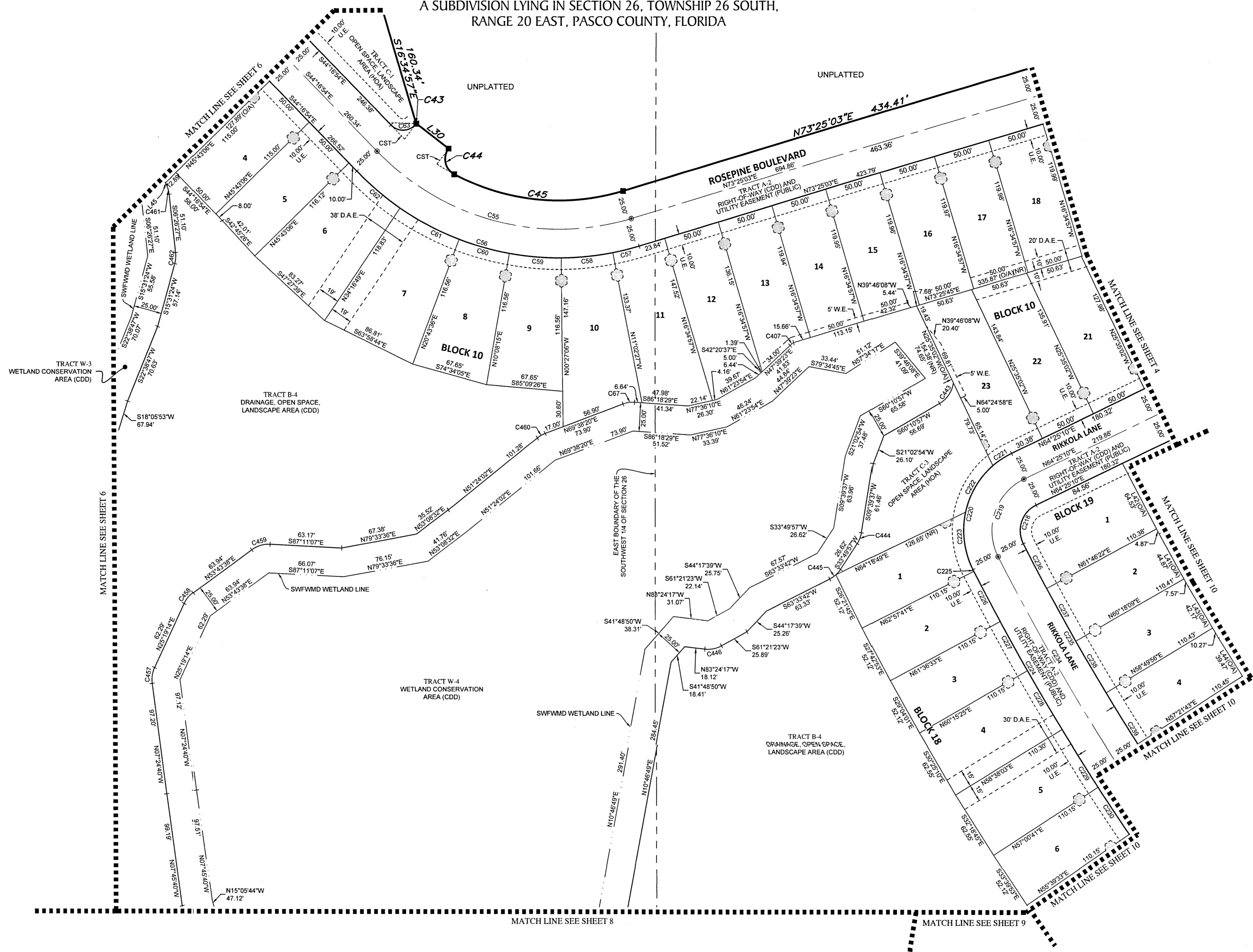
NOTE: THIS PLAT, AS RECORDED IN ITS GRAPHIC FORM, IS THE OFFICIAL DEPICTION OF THE SUBDIVIDED LANDS DESCRIBED HEREIN AND WILL IN NO CIRCUMSTANCES BE SUPPLANTED IN AUTHORITY BY ANY OTHER GRAPHIC OR DIGITAL FORM OF THE PLAT. THERE MAY BE ADDITIONAL RESTRICTIONS THAT ARE NOT RECORDED ON THIS PLAT THAT MAY BE FOUND IN THE PUBLIC RECORDS OF THIS COUNTY.





WYNDFIELDS PHASES 2A1 AND 2A2

A SUBDIVISION LYING IN SECTION 26, TOWNSHIP 26 SOUTH,
RANGE 20 EAST, PASCO COUNTY, FLORIDA



- ### LEGEND
- ----- Set (P.R.M.) Permanent Reference Monument 4"x4" Concrete Monument stamped LB7768 PRM
 - ----- Found 4"x4" Concrete Monument as noted.
 - ----- Set (P.C.P.) Permanent Control Point, Mag Nail & Disk, "LB7768 PCP"
 - ----- Set (P.R.M.) Permanent Reference Monument 1/2" Iron Rod with cap "LB7768 PRM" or as Noted
 - (NR) ----- Non-Radial
 - TYP ----- Typical
 - S.W.F.W.M.D. ----- Southwest Florida Water Management District
 - O.R.B. ----- Official Records Book
 - Pg.(s) ----- Page(s)
 - U.E. ----- Utility Easement
 - D.A.E. ----- Drainage and Access Easement
 - B.E. ----- Buffer Easement
 - W.E. ----- Wall Easement
 - O/A ----- Overall
 - T/O ----- Tie-Line Only
 - C.C.R. ----- Certified Corner Record
 - F.D.O.T. ----- Florida Department of Transportation
 - CST ----- Clear Sight Triangle Restriction (see detail this sheet)
 - ----- Side Yard Drainage/Access Easement (see detail this sheet)

No.	Bearing	Length
L30	S52°24'11"E	36.00'
L41	S29°08'46"E	52.44'
L42	S27°35'46"E	69.40'
L43	S30°41'47"E	52.44'
L44	S32°14'47"E	52.44'
L45	S27°01'45"E	1.54'

NOTE: EASEMENTS, BUFFERS AND OTHER SUCH LABELS AND DIMENSIONS OF A PARALLEL NATURE AS SHOWN HEREON AND INDICATED TO THE NEAREST FOOT (IE: 5' UTILITY EASEMENT) ARE ASSUMED TO BE THE SAME DIMENSION EXTENDED TO THE NEAREST HUNDREDTH OF A FOOT WITH NO GREATER OR LESSER VALUE (IE: 5' = 5.00") (IE: 7.5' = 7.50")

No.	Radius	Arc	Delta	Bearing	Chord
C43	15.00'	0.32'	1°14'16"	N38°28'50"E	0.32'
C44	15.00'	26.25'	100°16'31"	S12°16'34"E	23.03'
C45	200.00'	154.18'	44°10'07"	S84°29'53"E	150.39'
C55	225.00'	244.65'	62°18'03"	S75°25'55"E	232.78'
C56	250.00'	271.84'	62°18'03"	S75°25'55"E	258.64'
C57	250.00'	24.18'	5°32'29"	N76°11'18"E	24.17'
C58	250.00'	46.20'	10°35'21"	N84°15'13"E	46.14'
C59	250.00'	46.20'	10°35'21"	S85°09'26"E	46.14'
C60	250.00'	46.20'	10°35'21"	S74°34'05"E	46.14'
C61	250.00'	59.14'	13°33'13"	S62°29'48"E	59.00'
C62	250.00'	49.91'	11°28'17"	S50°00'03"E	49.83'
C63	15.00'	25.29'	96°37'08"	N87°24'32"E	22.40'
C67	25.00'	10.50'	24°03'11"	S81°39'56"W	10.42'
C218	25.00'	39.89'	91°24'57"	S18°42'41"W	35.79'
C219	50.00'	79.78'	91°24'57"	S18°42'41"W	71.58'

No.	Radius	Arc	Delta	Bearing	Chord
C220	75.00'	119.66'	91°24'57"	S18°42'41"W	107.37'
C221	75.00'	19.86'	15°10'15"	S56°50'02"W	19.80'
C222	75.00'	48.23'	36°50'55"	S30°49'27"W	47.41'
C223	75.00'	51.57'	39°23'48"	S07°17'54"E	50.56'
C224	2098.50'	377.69'	10°18'44"	S32°09'10"E	377.18'
C225	2098.50'	1.54'	0°02'32"	S27°01'04"E	1.54'
C226	2098.50'	49.53'	1°21'08"	S27°42'53"E	49.53'
C227	2098.50'	49.53'	1°21'08"	S29°04'01"E	49.53'
C228	2098.50'	59.43'	1°37'22"	S30°33'16"E	59.43'
C229	2098.50'	59.43'	1°37'22"	S32°10'38"E	59.43'
C230	2098.50'	49.53'	1°21'08"	S33°39'53"E	49.53'
C234	2073.50'	373.19'	10°18'44"	S32°09'10"E	372.69'
C235	2048.50'	368.69'	10°18'44"	S32°09'10"E	368.19'
C236	2048.50'	44.00'	1°13'50"	S27°36'43"E	44.00'
C237	2048.50'	52.57'	1°28'13"	S28°57'45"E	52.57'

No.	Radius	Arc	Delta	Bearing	Chord
C238	2048.50'	52.57'	1°28'13"	S30°25'58"E	52.57'
C239	2048.50'	52.57'	1°28'13"	S31°54'11"E	52.57'
C407	25.00'	3.99'	9°09'16"	S52°14'02"W	3.99'
C443	25.00'	22.32'	51°09'02"	N34°36'26"E	21.58'
C444	25.00'	10.55'	24°10'20"	N21°44'47"E	10.47'
C445	25.00'	12.97'	29°43'46"	N48°41'50"E	12.83'
C446	25.00'	15.38'	35°14'20"	N78°56'32"E	15.13'
C457	25.00'	14.28'	32°43'54"	S08°57'17"W	14.09'
C458	25.00'	12.39'	28°24'23"	S39°31'26"W	12.27'
C459	25.00'	17.06'	39°05'15"	S73°16'15"W	16.73'
C460	25.00'	7.96'	18°14'18"	S60°31'11"W	7.92'
C461	25.00'	8.98'	20°35'18"	N16°44'06"W	8.94'
C462	25.00'	9.58'	21°57'51"	N04°32'22"E	9.53'

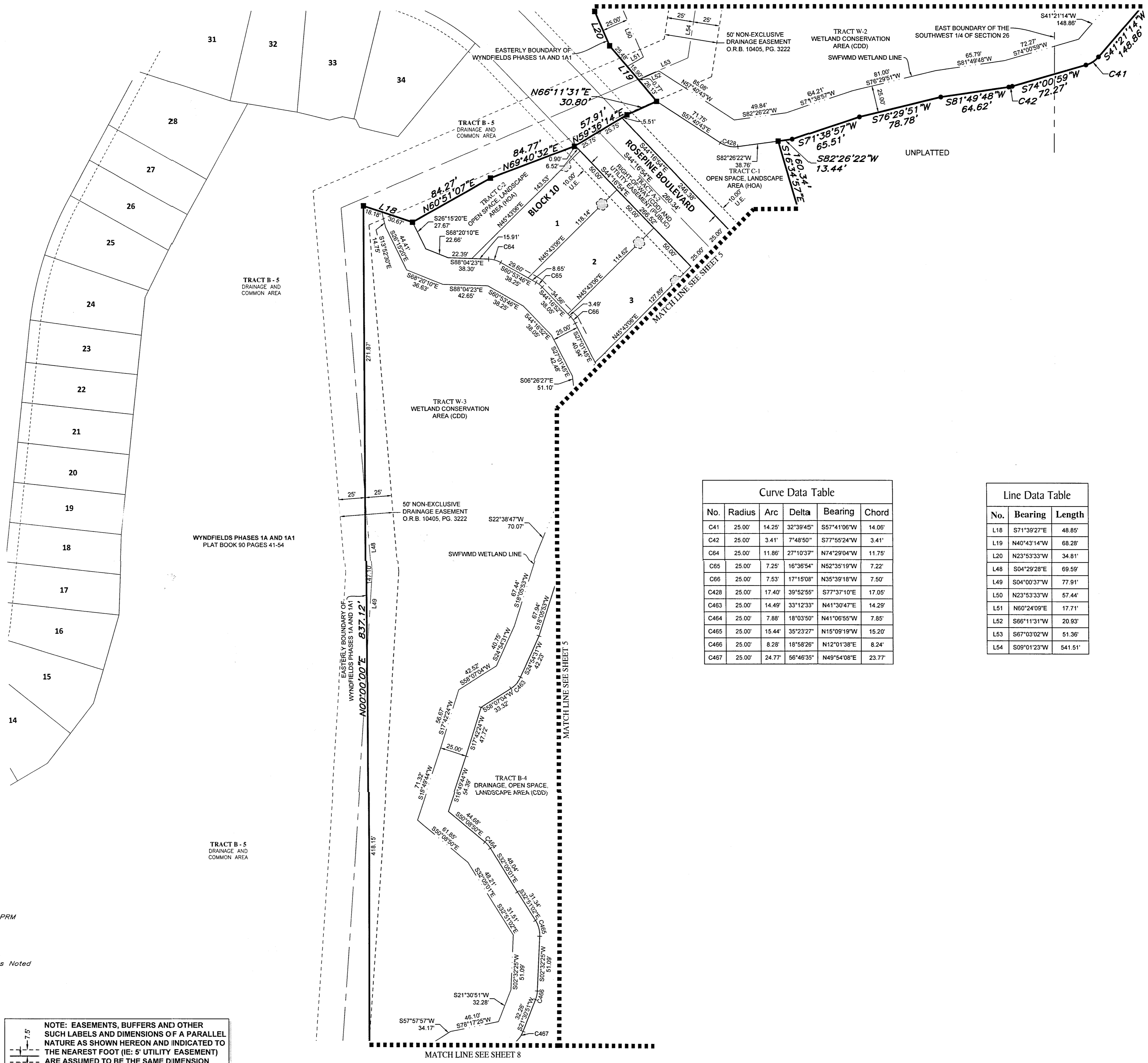
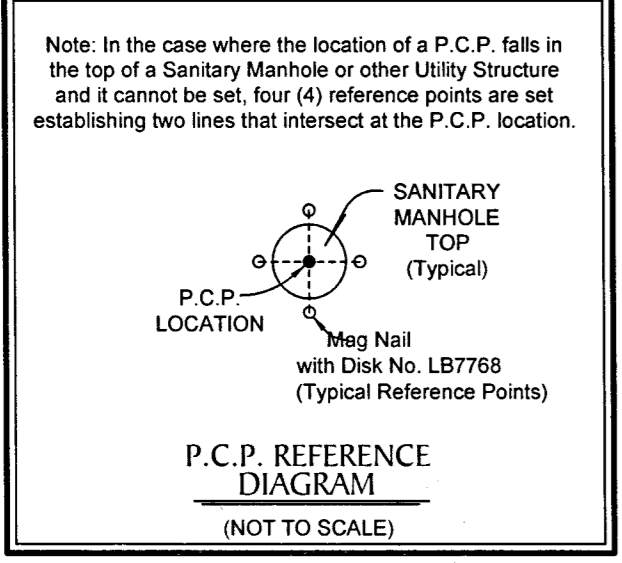
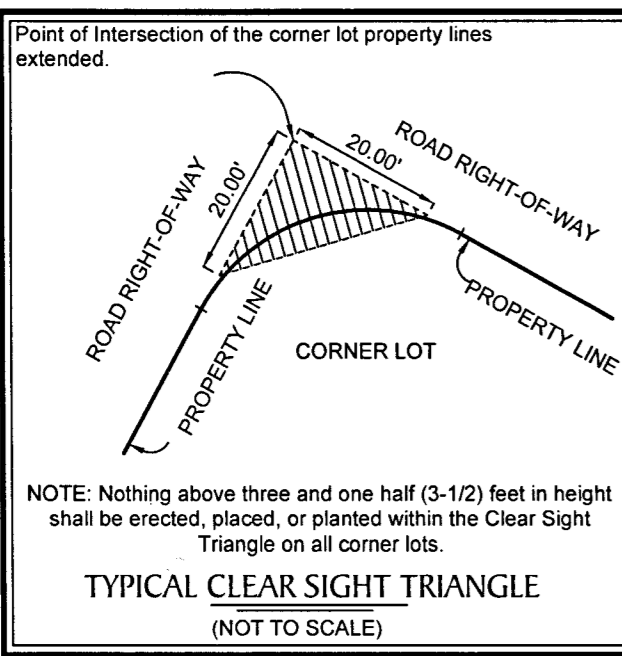
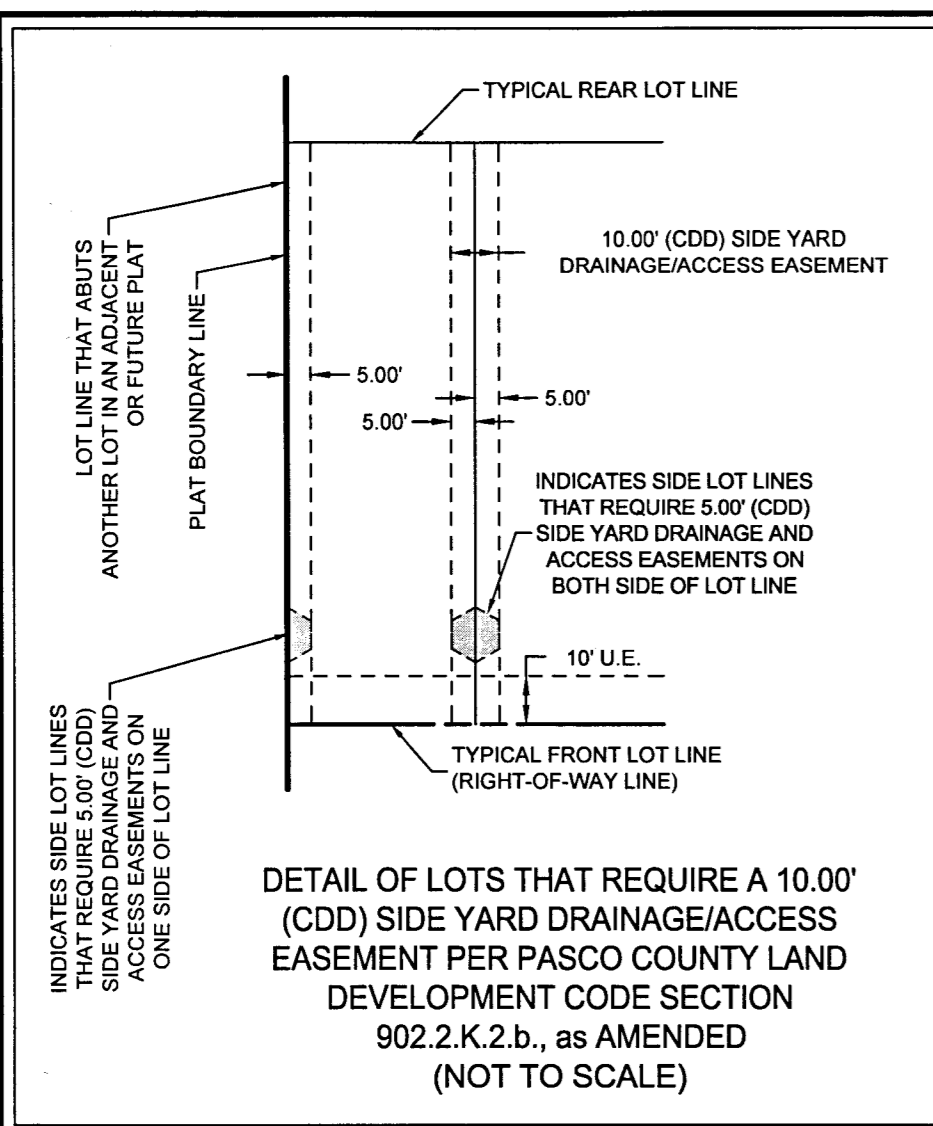
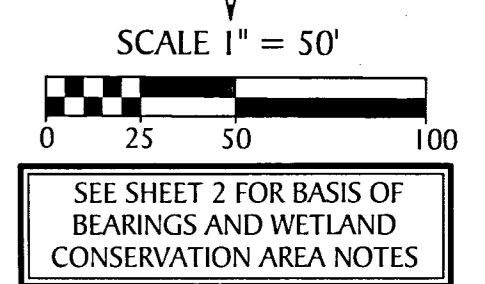
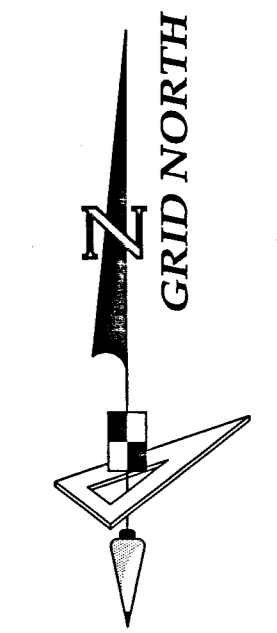
213 Hobbs Street
Tampa, Florida 33619
www.geopointsurvey.com

Phone: (813) 248-8888
Fax: (813) 248-2266
Licensed Business Number LB 7768

SHEET 5 OF 15 SHEETS

WYNDFIELDS PHASES 2A1 AND 2A2

A SUBDIVISION LYING IN SECTION 26, TOWNSHIP 26 SOUTH, RANGE 20 EAST, PASCO COUNTY, FLORIDA



No.	Radius	Arc	Delta	Bearing	Chord
C41	25.00'	14.25'	32°39'45"	S71°41'06"W	14.06'
C42	25.00'	3.41'	7°48'50"	S77°55'24"W	3.41'
C64	25.00'	11.86'	27°10'37"	N74°29'04"W	11.75'
C65	25.00'	7.25'	16°36'54"	N52°35'19"W	7.22'
C66	25.00'	7.53'	17°15'08"	N35°39'18"W	7.50'
C428	25.00'	17.40'	39°52'55"	S77°37'10"E	17.05'
C463	25.00'	14.49'	33°12'33"	N41°30'47"E	14.29'
C464	25.00'	7.88'	18°03'50"	N41°06'55"W	7.85'
C465	25.00'	15.44'	35°23'27"	N15°09'19"W	15.20'
C466	25.00'	8.28'	18°58'26"	N12°01'38"E	8.24'
C467	25.00'	24.77'	56°46'35"	N49°54'08"E	23.77'

No.	Bearing	Length
L18	S71°39'27"E	48.85'
L19	N40°43'14"W	68.28'
L20	N23°53'33"W	34.81'
L48	S04°29'28"E	69.59'
L49	S04°00'37"W	77.91'
L50	N23°53'33"W	57.44'
L51	S00°24'09"E	17.71'
L52	S66°11'31"W	20.93'
L53	S67°03'02"W	51.36'
L54	S09°01'23"W	541.51'

LEGEND

- ----- Set (P.R.M.) Permanent Reference Monument
- ----- 4"x4" Concrete Monument stamped LB7768 PRM
- ----- Found 4"x4" Concrete Monument not noted.
- ----- Set (P.C.P.) Permanent Control Point, Mag Nail & Disk, "LB7768 PCP"
- ----- Set (P.R.M.) Permanent Reference Monument 1/2" Iron Rod with cap "LB7768 PRM" or as noted
- (NR) ----- Non-Radial
- TYP ----- Typical
- S.W.F.W.M.D. ----- Southwest Florida Water Management District
- O.R.B. ----- Official Records Book
- Pg(s) ----- Page(s)
- U.E. ----- Utility Easement
- D.A.E. ----- Drainage and Access Easement
- B.E. ----- Buffer Easement
- W.E. ----- Wall Easement
- O/A ----- Overall
- TLO ----- Tie-Line Only
- C.C.R. ----- Certified Corner Record
- F.D.O.T. ----- Florida Department of Transportation
- CST ----- Clear Sight Triangle Restriction (see detail this sheet)
- ----- Side Yard Drainage/Access Easement (see detail this sheet)

NOTE: EASEMENTS, BUFFERS AND OTHER SUCH LABELS AND DIMENSIONS OF A PARALLEL NATURE AS SHOWN HEREON AND INDICATED TO THE NEAREST FOOT (IE: 5' UTILITY EASEMENT) ARE ASSUMED TO BE THE SAME DIMENSION EXTENDED TO THE NEAREST HUNDREDTH OF A FOOT WITH NO GREATER OR LESSER VALUE (IE: 5' = 5.00') (IE: 7.5' = 7.50')

GeoPoint
 Surveying, Inc.

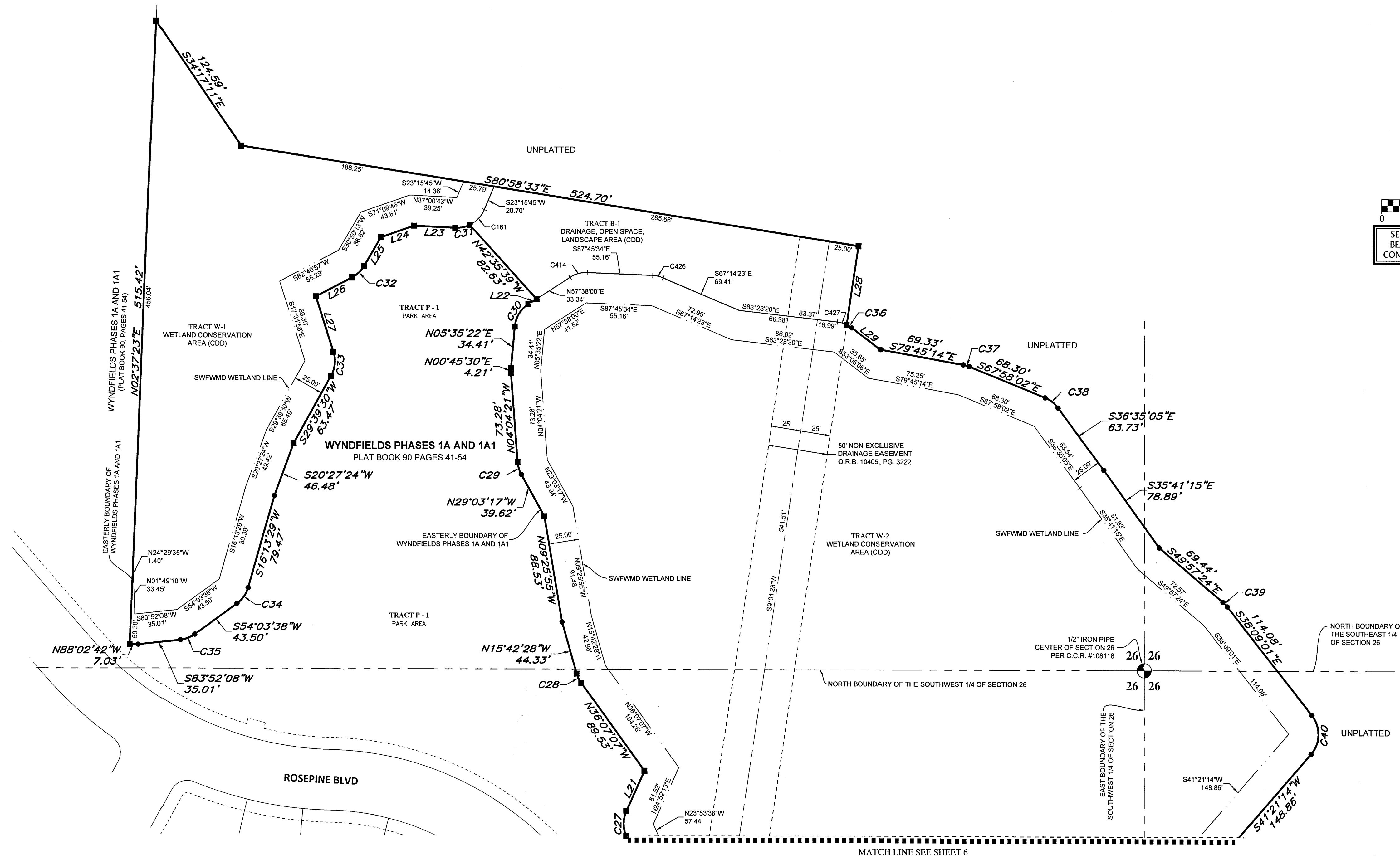
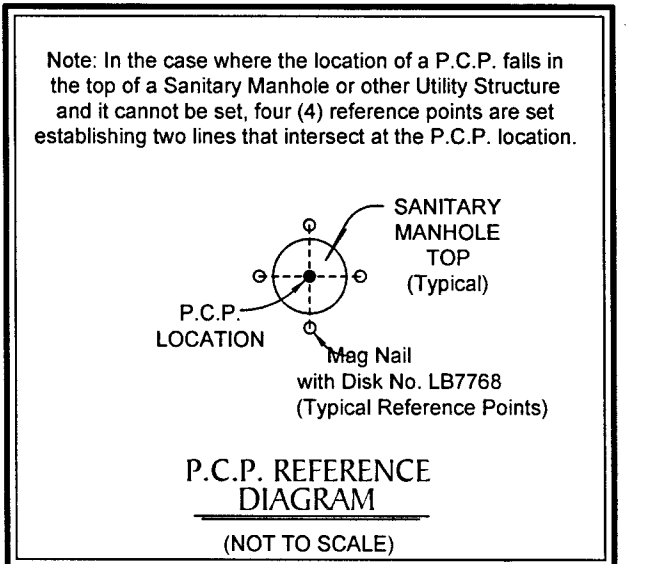
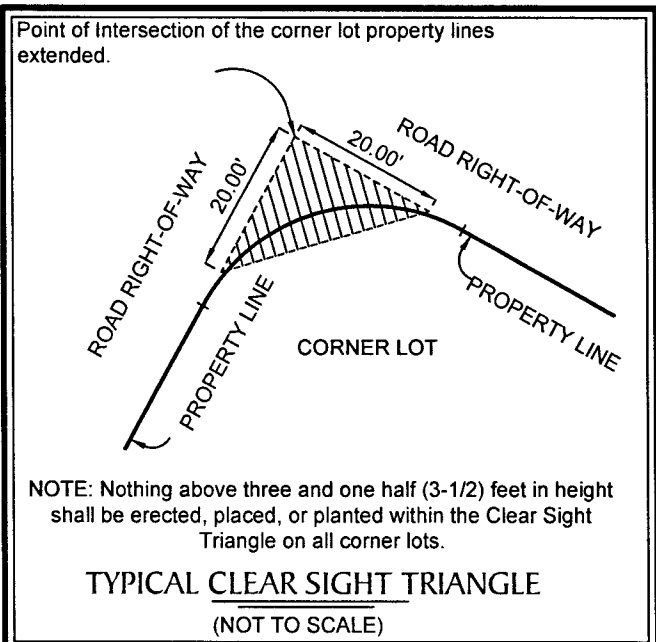
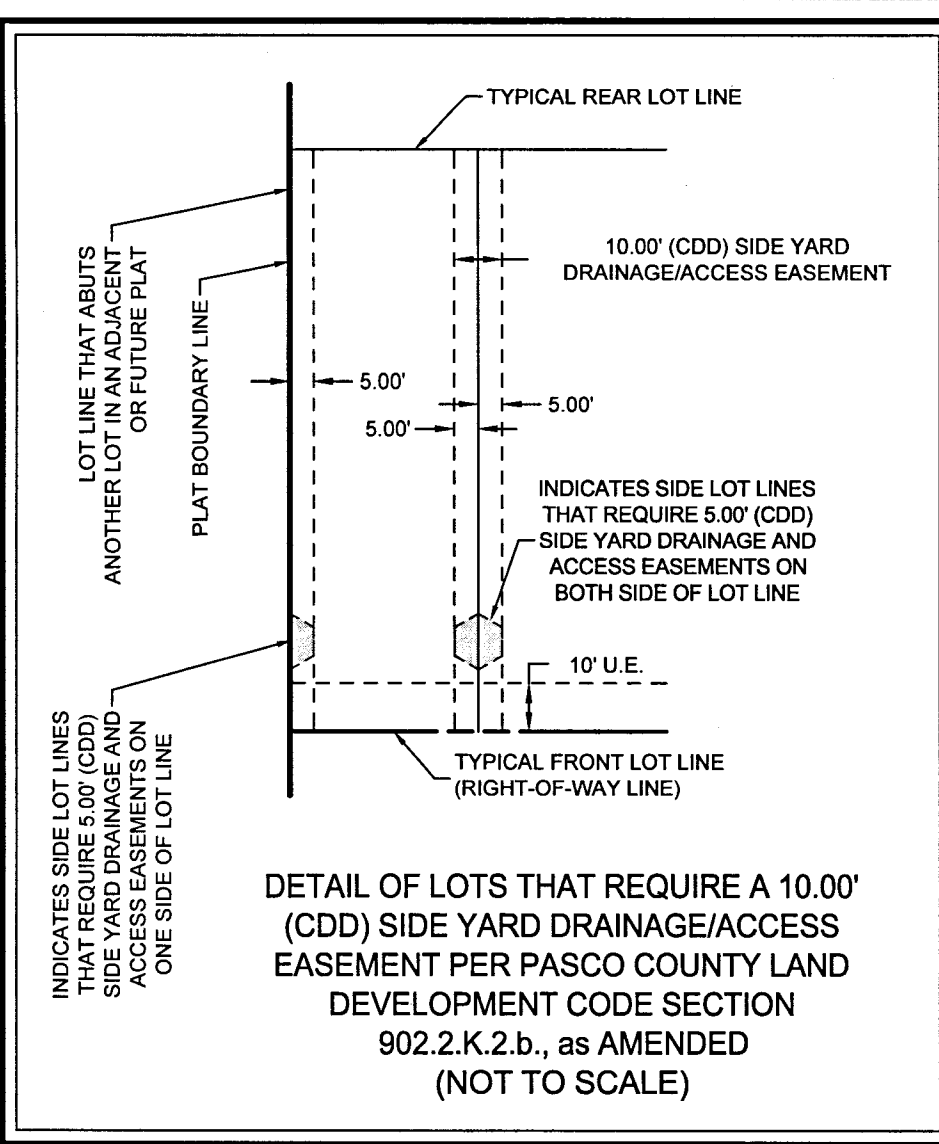
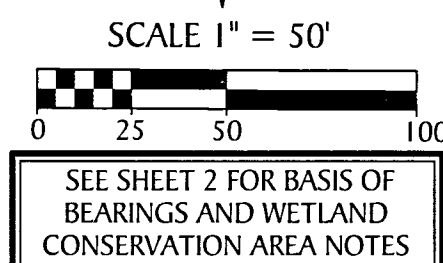
213 Hobbs Street
 Tampa, Florida 33619
 www.geopointsurvey.com

Phone: (813) 248-8888
 Fax: (813) 248-2266
 Licensed Business Number LB 7768

SHEET 6 OF 15 SHEETS

WYNDFIELDS PHASES 2A1 AND 2A2

A SUBDIVISION LYING IN SECTION 26, TOWNSHIP 26 SOUTH, RANGE 20 EAST, PASCO COUNTY, FLORIDA



LEGEND

- ----- Set (P.R.M.) Permanent Reference Monument 4"x4" Concrete Monument stamped LB7768 PRM
- ----- Found 4"x4" Concrete Monument as noted.
- ⊙ ----- Set (P.C.P.) Permanent Control Point, Mag Nail & Disk, "LB7768 PCP"
- ----- Set (P.R.M.) Permanent Reference Monument 1/2" Iron Rod with cap "LB7768 PRM" or as Noted
- (NR) ----- Non-Radial
- TYP ----- Typical
- S.W.F.W.M.D. ----- Southwest Florida Water Management District
- O.R.B. ----- Official Records Book
- Pg(s) ----- Page(s)
- U.E. ----- Utility Easement
- D.A.E. ----- Drainage and Access Easement
- B.E. ----- Buffer Easement
- W.E. ----- Wall Easement
- O/A ----- Overall
- TLO ----- Tie-Line Only
- C.C.R. ----- Certified Corner Record
- F.D.O.T. ----- Florida Department of Transportation
- CST ----- Clear Sight Triangle Restriction (see detail this sheet)
- ----- Side Yard Drainage/Access Easement (see detail this sheet)

NOTE: EASEMENTS, BUFFERS AND OTHER SUCH LABELS AND DIMENSIONS OF A PARALLEL NATURE AS SHOWN HEREON AND INDICATED TO THE NEAREST FOOT (IE: 5' UTILITY EASEMENT) ARE ASSUMED TO BE THE SAME DIMENSION EXTENDED TO THE NEAREST HUNDREDTH OF A FOOT WITH NO GREATER OR LESSER VALUE (IE: 5' = 5.00') (IE: 7.5' = 7.50')

Curve Data Table

No.	Radius	Arc	Delta	Bearing	Chord
C27	25.00'	21.28'	48°45'48"	N00°29'20"E	20.64'
C28	25.00'	8.91'	20°24'39"	N25°54'47"W	8.86'
C29	25.00'	10.90'	24°58'56"	N16°33'49"W	10.81'
C30	25.00'	22.71'	52°02'37"	N31°36'41"E	21.94'
C31	25.00'	12.48'	28°36'10"	S78°41'12"W	12.35'
C32	25.00'	13.90'	31°50'44"	S46°45'35"W	13.72'
C33	25.00'	20.59'	47°11'28"	S06°03'46"W	20.01'
C34	25.00'	16.51'	37°50'09"	S35°08'33"W	16.21'
C35	25.00'	13.01'	29°48'30"	S68°57'53"W	12.86'
C36	25.00'	5.09'	11°40'19"	S58°56'16"E	5.08'
C37	25.00'	5.14'	11°47'12"	S73°51'38"E	5.13'
C38	25.00'	13.69'	31°22'57"	S52°16'34"E	13.52'
C39	25.00'	5.15'	11°48'23"	S44°03'13"E	5.14'
C40	25.00'	34.69'	79°30'15"	S01°36'07"W	31.97'
C161	25.00'	17.94'	41°07'23"	N43°49'26"E	17.56'
C414	25.00'	15.10'	34°36'27"	S74°56'13"W	14.87'
C426	25.00'	8.95'	20°31'10"	N77°29'59"W	8.91'
C427	25.00'	8.12'	18°36'54"	N74°04'52"W	8.09'

Line Data Table

No.	Bearing	Length
L21	N24°52'13"E	36.79'
L22	N57°38'00"E	8.18'
L23	N87°00'43"W	34.43'
L24	S71°09'46"W	29.61'
L25	S30°50'13"W	27.44'
L26	S62°40'57"W	34.23'
L27	S17°31'58"E	48.25'
L28	S09°01'27"W	65.65'
L29	S53°06'06"E	29.53'

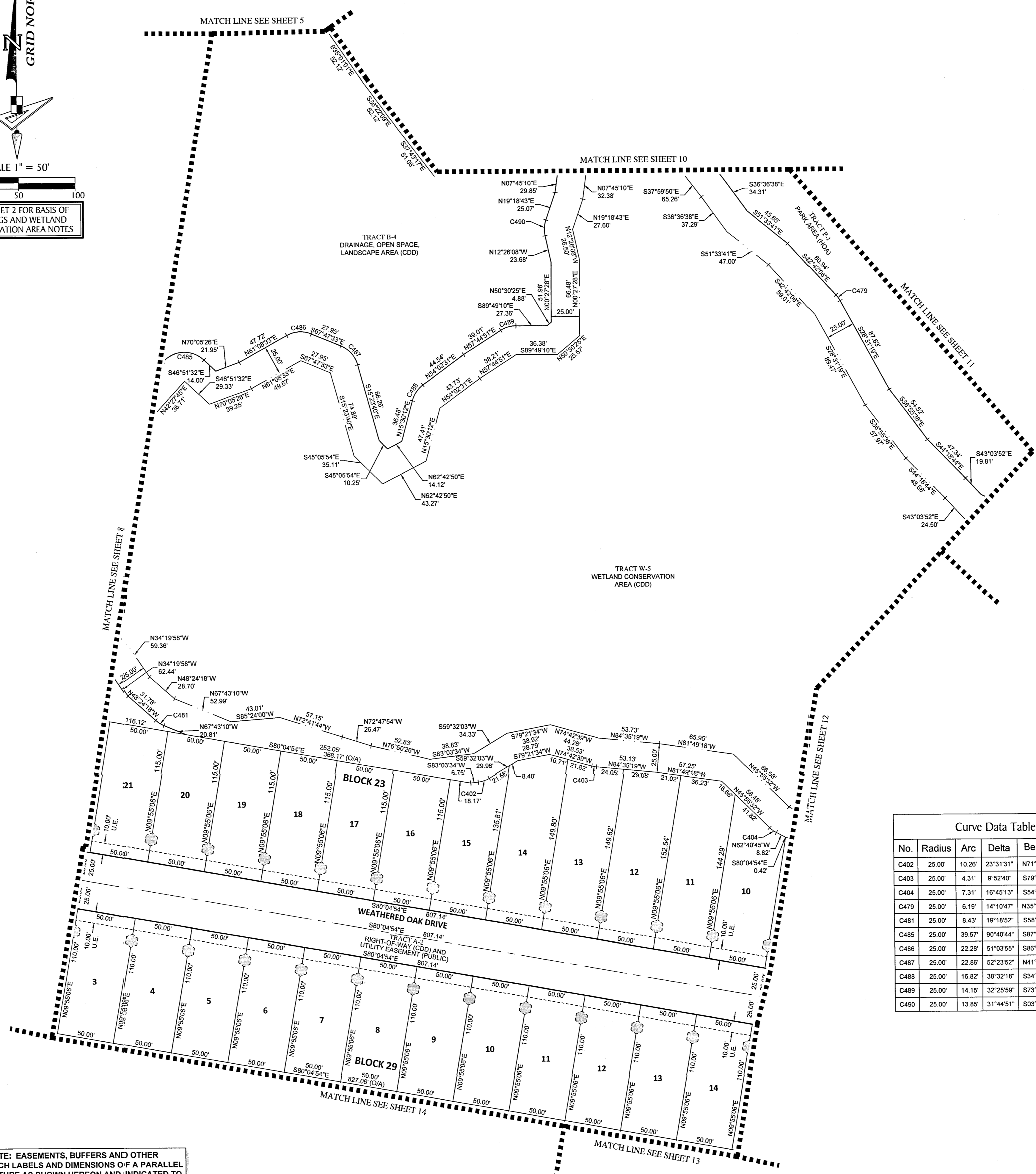
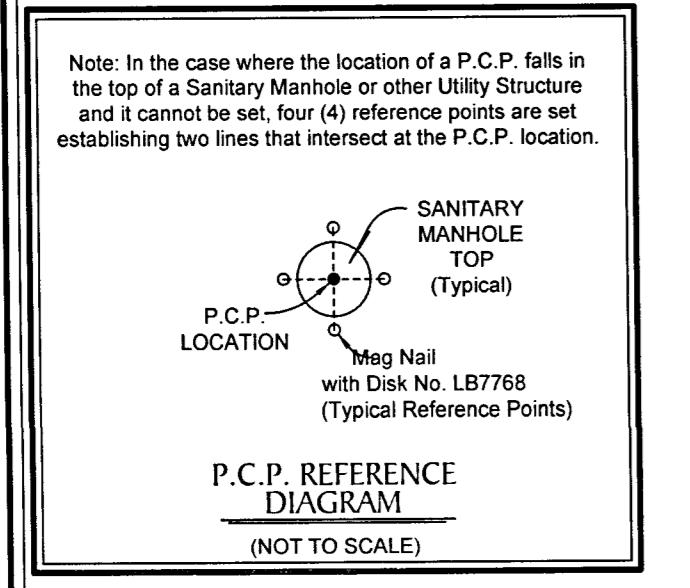
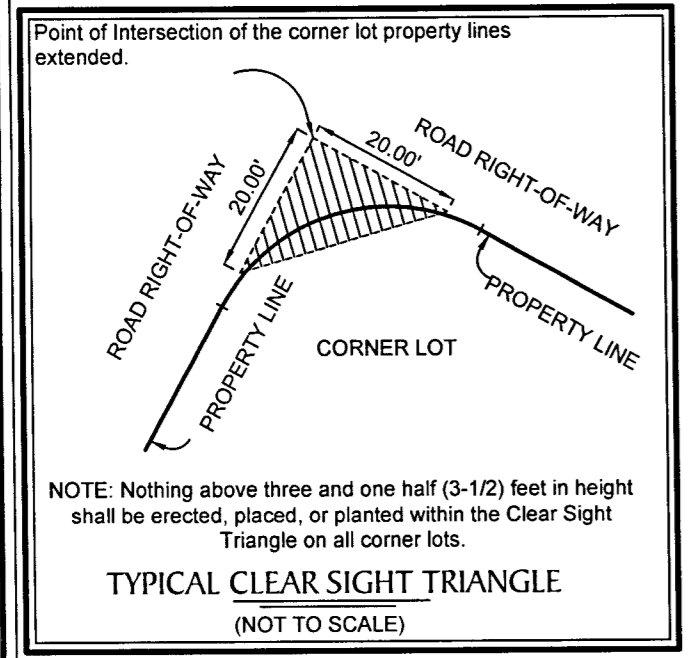
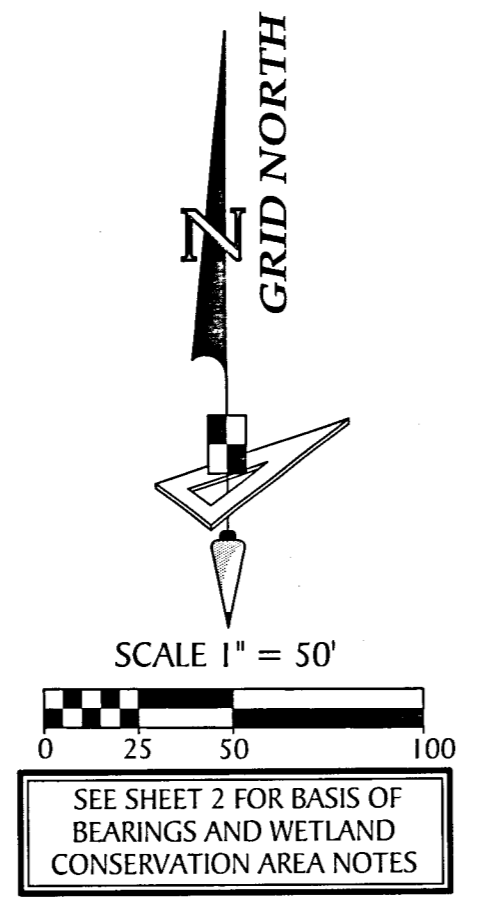
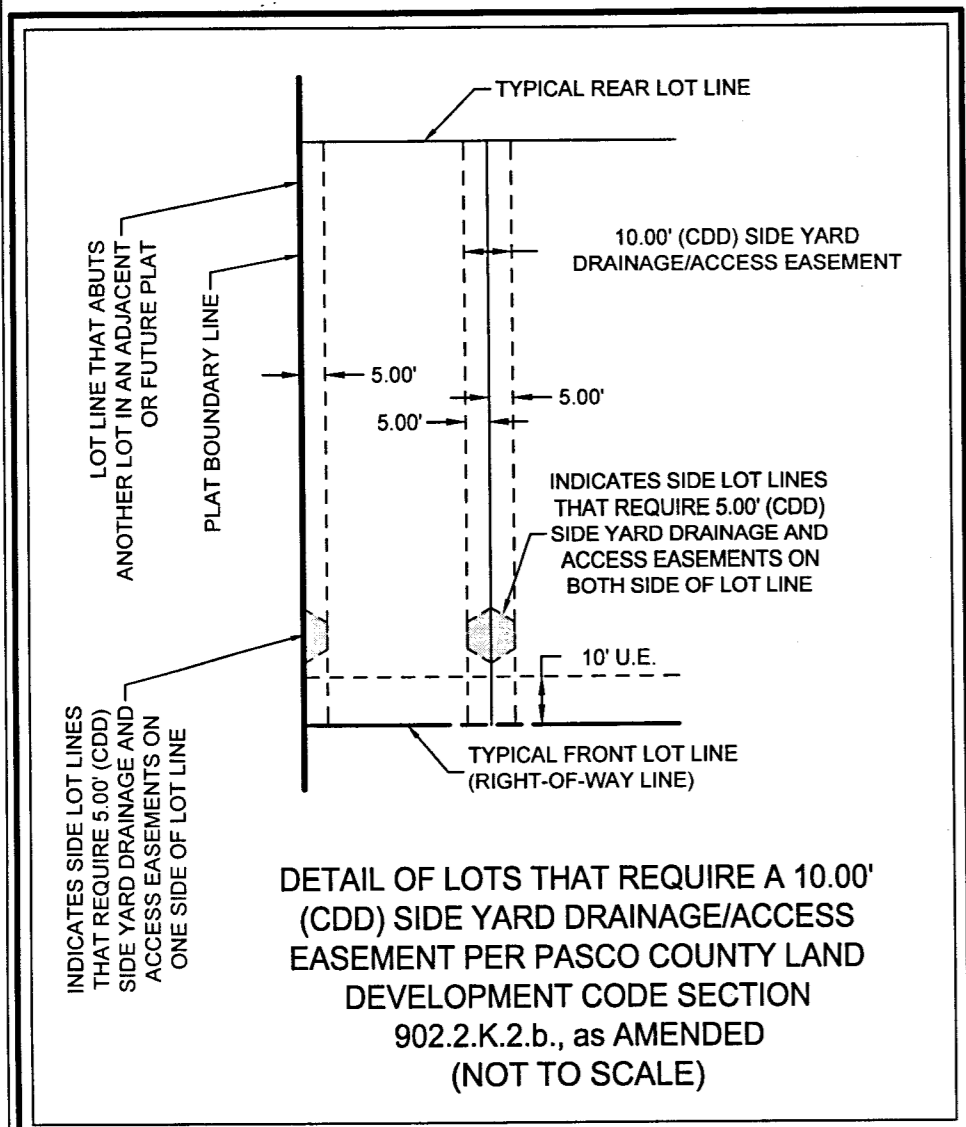
213 Hobbs Street
Tampa, Florida 33619
www.geopointsurvey.com

Phone: (813) 248-8888
Fax: (813) 248-2266
Licensed Business Number LB 7768

SHEET 7 OF 15 SHEETS

WYNDFIELDS PHASES 2A1 AND 2A2

A SUBDIVISION LYING IN SECTION 26, TOWNSHIP 26 SOUTH, RANGE 20 EAST, PASCO COUNTY, FLORIDA



No.	Radius	Arc	Delta	Bearing	Chord
C402	25.00'	10.26'	23°31'31"	N71°17'49"E	10.19'
C403	25.00'	4.31'	9°52'40"	S79°38'59"E	4.30'
C404	25.00'	7.31'	16°45'13"	S54°18'09"E	7.28'
C479	25.00'	6.19'	14°10'47"	N35°36'42"W	6.17'
C481	25.00'	8.43'	19°18'52"	S58°03'44"E	8.39'
C485	25.00'	39.57'	60°40'44"	S87°48'06"W	35.56'
C486	25.00'	22.28'	51°03'55"	S86°40'30"W	21.55'
C487	25.00'	22.86'	52°23'52"	N41°35'36"W	22.07'
C488	25.00'	16.82'	38°32'18"	S34°46'21"W	16.50'
C489	25.00'	14.15'	32°25'59"	S73°57'51"W	13.96'
C490	25.00'	13.85'	31°44'51"	S03°26'17"W	13.68'

- LEGEND**
- Set (P.R.M.) Permanent Reference Monument 4"x4" Concrete Monument stamped LB7768 PRM
 - Found 4"x4" Concrete Monument as noted.
 - Set (P.C.P.) Permanent Control Point, Mag Nail & Disk, "LB7768 PCP"
 - Set (P.R.M.) Permanent Reference Monument 1/2" Iron Rod with cap, "LB7768 PRM" or as Noted
 - (NR) Non-Radial
 - TYP. Typical
 - S.W.F.W.M.D. Southwest Florida Water Management District
 - O.R.B. Official Records Book
 - Pg(s) Page(s)
 - U.E. Utility Easement
 - D.A.E. Drainage and Access Easement
 - B.E. Buffer Easement
 - W.E. Wolf Easement
 - O/A Overall
 - TLO Tie-Line Only
 - C.C.R. Certified Corner Record
 - F.D.O.T. Florida Department of Transportation
 - CST Clear Sight Triangle Restriction (see detail this sheet)
 - Side Yard Drainage/Access Easement (see detail this sheet)

NOTE: EASEMENTS, BUFFERS AND OTHER SUCH LABELS AND DIMENSIONS OF A PARALLEL NATURE AS SHOWN HEREON AND INDICATED TO THE NEAREST FOOT (IE: 5' UTILITY EASEMENT) ARE ASSUMED TO BE THE SAME DIMENSION EXTENDED TO THE NEAREST HUNDREDTH OF A FOOT WITH NO GREATER OR LESSER VALUE (IE: 5' = 5.00') (IE: 7.5' = 7.50')

GeoPoint
Surveying, Inc.

213 Hobbs Street
Tampa, Florida 33619
www.geopointsurvey.com

Phone: (813) 248-8888
Fax: (813) 248-2266
Licensed Business Number LB 7768

SHEET 9 OF 15 SHEETS

WYNDFIELDS PHASES 2A1 AND 2A2

A SUBDIVISION LYING IN SECTION 26, TOWNSHIP 26 SOUTH, RANGE 20 EAST, PASCO COUNTY, FLORIDA

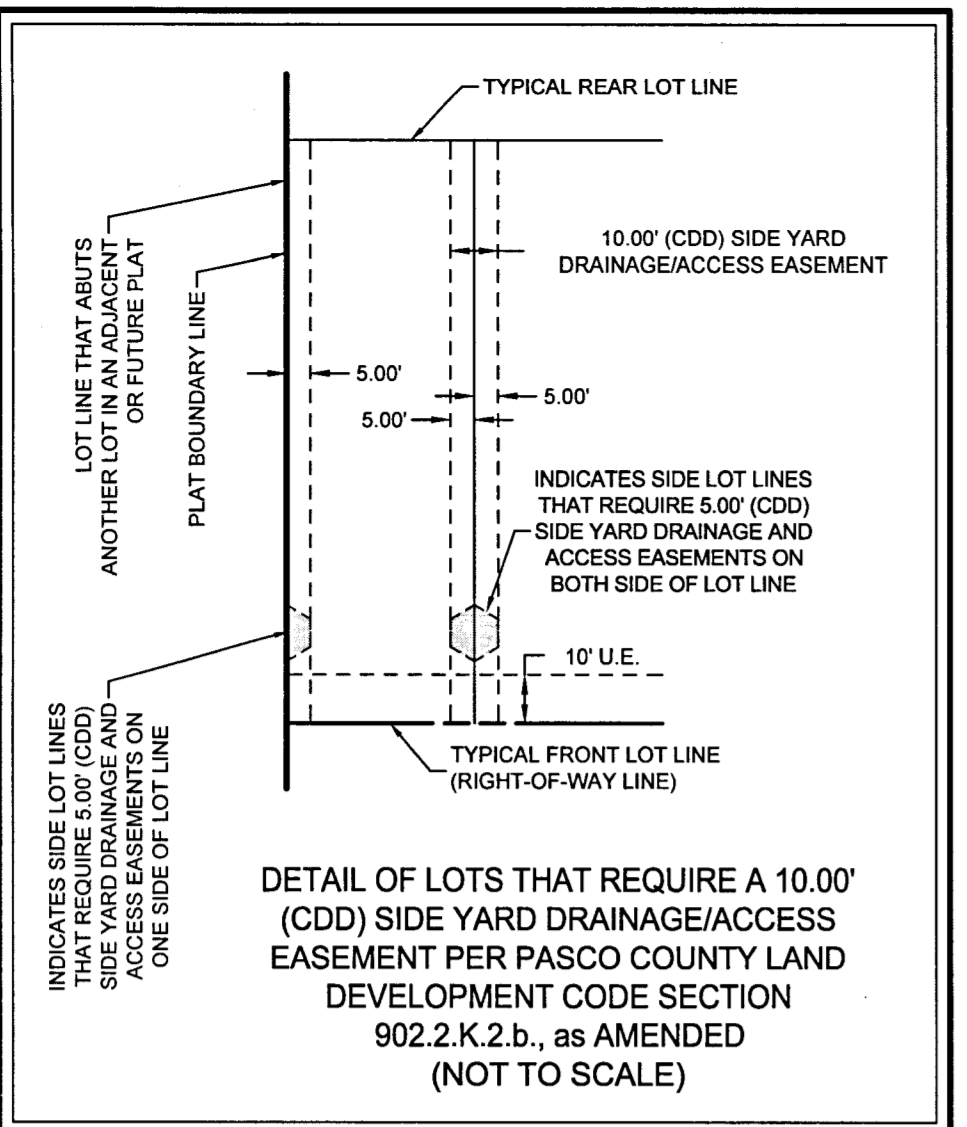
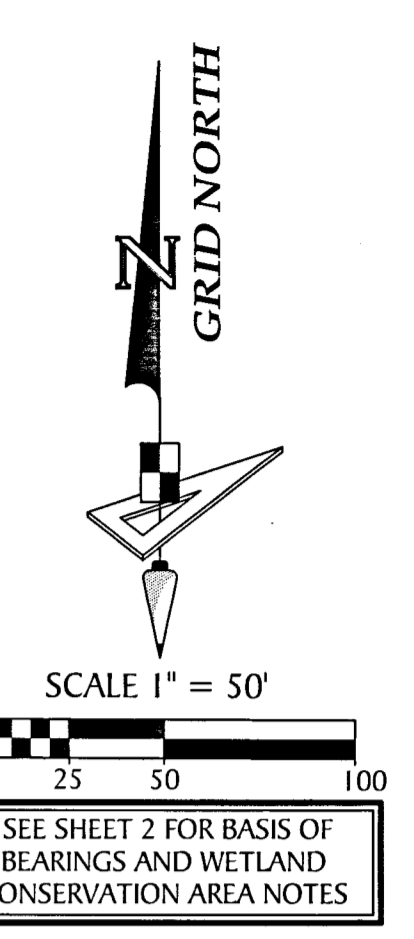
Curve Data Table					
No.	Radius	Arc	Delta	Bearing	Chord
C9	25.00'	12.34'	28°17'03"	S49°51'26"W	12.22'
C10	25.00'	16.94'	38°49'48"	S16°18'00"W	16.62'
C11	25.00'	11.62'	28°38'28"	S16°26'09"E	11.52'
C72	1803.00'	1018.54'	32°22'02"	S32°45'47"E	1005.05'
C74	1803.00'	422.80'	13°26'08"	S32°17'55"E	421.83'
C75	1803.00'	312.49'	9°55'49"	S43°58'54"E	312.10'
C76	1571.50'	902.08'	32°53'22"	S33°01'25"E	889.75'
C77	1500.50'	820.92'	31°20'48"	S33°47'42"E	810.72'
C80	1365.00'	429.05'	18°00'34"	S27°14'39"E	427.29'
C86	1365.00'	49.27'	2°04'06"	S29°24'07"E	49.27'
C87	1365.00'	49.27'	2°04'06"	S31°28'13"E	49.27'
C88	1365.00'	49.27'	2°04'06"	S33°32'19"E	49.27'
C89	1365.00'	39.93'	1°40'34"	S35°24'39"E	39.93'
C90	1480.50'	546.97'	21°10'04"	S28°07'49"E	543.86'
C96	1480.50'	53.46'	2°04'07"	S28°24'18"E	53.45'
C97	1480.50'	53.46'	2°04'07"	S31°28'25"E	53.45'
C98	1480.50'	53.46'	2°04'07"	S33°32'33"E	53.45'
C99	1480.50'	53.46'	2°04'07"	S35°36'40"E	53.45'
C100	1480.50'	53.46'	2°04'07"	S37°40'48"E	53.45'
C101	60.00'	29.40'	28°04'34"	S59°14'27"E	29.11'
C102	1340.00'	395.35'	16°54'16"	S25°01'50"E	393.92'
C103	50.00'	33.90'	38°50'55"	S52°54'26"E	33.26'
C104	60.00'	270.17'	25°59'36"	N14°45'16"E	93.26'

Curve Data Table					
No.	Radius	Arc	Delta	Bearing	Chord
C105	25.00'	27.19'	62°19'26"	S83°04'49"E	25.87'
C106	25.00'	8.45'	19°21'53"	S42°14'10"E	8.41'
C107	1315.00'	56.91'	2°28'47"	S31°18'50"E	56.91'
C123	60.00'	9.38'	8°57'14"	S40°43'33"E	9.37'
C124	1315.00'	326.18'	14°12'44"	S25°26'51"E	325.35'
C126	1642.50'	903.19'	31°30'23"	S33°42'55"E	891.86'
C127	1662.50'	611.20'	21°03'51"	S27°58'22"E	607.76'
C133	1662.50'	49.70'	1°42'46"	S27°22'14"E	49.70'
C134	1662.50'	49.70'	1°42'46"	S29°05'01"E	49.70'
C135	1662.50'	49.70'	1°42'46"	S30°47'47"E	49.70'
C136	1662.50'	49.70'	1°42'46"	S32°30'34"E	49.70'
C137	1662.50'	49.70'	1°42'46"	S34°13'20"E	49.70'
C138	1662.50'	49.70'	1°42'46"	S35°56'07"E	49.70'
C139	1662.50'	49.71'	1°42'48"	S37°38'54"E	49.71'
C141	1662.50'	49.70'	1°42'46"	S40°18'55"E	49.70'
C142	1662.50'	49.69'	1°42'46"	S42°01'41"E	49.69'
C143	1662.50'	59.62'	2°03'18"	S43°54'43"E	59.62'
C171	1778.00'	964.08'	31°04'02"	S33°24'47"E	952.31'
C174	1778.00'	63.77'	2°03'18"	S43°54'43"E	63.76'
C175	1778.00'	53.15'	1°42'46"	S42°01'41"E	53.14'
C176	1778.00'	53.15'	1°42'46"	S40°18'55"E	53.15'
C177	1778.00'	29.60'	0°57'14"	S38°58'55"E	29.60'
C178	1778.00'	53.17'	1°42'48"	S37°10'37"E	53.17'

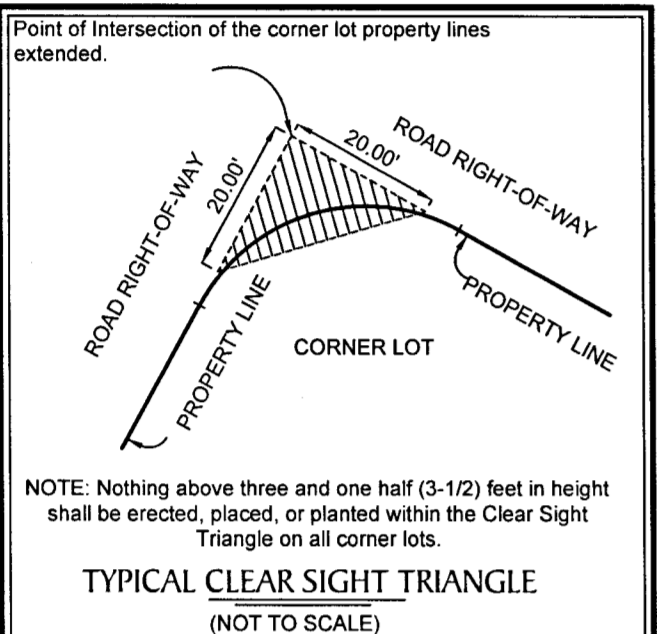
Curve Data Table					
No.	Radius	Arc	Delta	Bearing	Chord
C180	1778.00'	53.15'	1°42'46"	S34°13'20"E	53.15'
C181	1778.00'	53.15'	1°42'46"	S32°30'34"E	53.15'
C182	1778.00'	53.15'	1°42'46"	S30°47'47"E	53.15'
C183	1778.00'	53.15'	1°42'46"	S28°05'01"E	53.15'
C184	1778.00'	53.15'	1°42'46"	S27°22'14"E	53.15'
C201	1828.00'	277.15'	8°41'12"	S44°36'12"E	276.88'
C205	1828.00'	59.35'	1°51'36"	S43°02'48"E	59.34'
C206	1828.00'	59.24'	1°51'24"	S41°11'18"E	59.23'
C207	15.00'	23.24'	88°45'23"	N84°38'17"W	20.98'
C208	15.00'	23.24'	88°45'23"	N06°36'20"E	20.98'
C209	1828.00'	349.30'	10°56'54"	S32°17'55"E	348.77'
C210	1828.00'	52.67'	1°39'03"	S36°56'50"E	52.67'
C211	1828.00'	49.46'	1°33'01"	S35°20'48"E	49.46'
C212	1828.00'	49.46'	1°33'01"	S33°47'48"E	49.46'
C213	1828.00'	49.46'	1°33'01"	S32°14'47"E	49.46'
C214	1828.00'	49.46'	1°33'01"	S30°41'47"E	49.46'
C215	1828.00'	49.46'	1°33'01"	S29°08'46"E	49.46'
C216	1828.00'	49.53'	1°32'48"	S27°35'52"E	49.53'
C217	15.00'	23.24'	88°45'23"	N71°12'09"W	20.98'
C224	2098.50'	377.69'	10°18'44"	S32°09'10"E	377.18'
C231	2098.50'	49.53'	1°21'08"	S35°01'01"E	49.53'
C232	2098.50'	49.53'	1°21'08"	S36°22'09"E	49.53'
C233	2098.50'	9.65'	0°15'49"	S37°10'37"E	9.65'

Curve Data Table					
No.	Radius	Arc	Delta	Bearing	Chord
C234	2073.50'	373.19'	10°18'44"	S32°09'10"E	372.69'
C235	2048.50'	368.69'	10°18'44"	S32°09'10"E	368.19'
C240	2048.50'	52.57'	1°28'13"	S33°22'24"E	52.57'
C241	2048.50'	52.57'	1°28'13"	S34°50'37"E	52.57'
C242	2048.50'	61.86'	1°43'48"	S36°26'37"E	61.86'
C243	35.00'	56.02'	91°42'27"	S83°09'45"E	50.23'
C244	60.00'	96.04'	91°42'27"	S83°09'45"E	86.11'
C245	85.00'	136.05'	91°42'27"	S83°09'45"E	121.99'
C246	85.00'	31.43'	21°11'04"	S47°54'03"E	31.25'
C247	85.00'	76.05'	51°15'43"	S84°07'27"E	73.54'
C430	60.00'	231.39'	220°57'48"	N03°45'38"W	112.41'
C435	1662.50'	290.43'	10°00'34"	S44°27'49"E	290.06'
C436	1480.50'	219.88'	8°30'34"	S42°58'08"E	219.68'
C474	85.00'	28.57'	19°15'41"	N60°36'51"E	28.44'
C475	25.00'	23.49'	53°49'55"	N37°41'13"W	22.63'
C476	25.00'	23.49'	25°22'35"	S62°27'33"W	10.98'
C477	25.00'	12.42'	28°27'20"	S89°22'31"W	12.29'
C478	25.00'	16.76'	38°23'59"	N57°11'50"W	16.44'
C491	25.00'	18.33'	42°01'06"	S28°45'43"W	17.93'
C526	1778.00'	0.21'	0°00'24"	S38°30'06"E	0.21'
C527	1778.00'	0.19'	0°00'22"	S39°27'43"E	0.19'
C528	1662.50'	1.15'	0°02'23"	S39°28'44"E	1.15'
C529	1662.50'	1.17'	0°02'25"	S38°29'06"E	1.17'

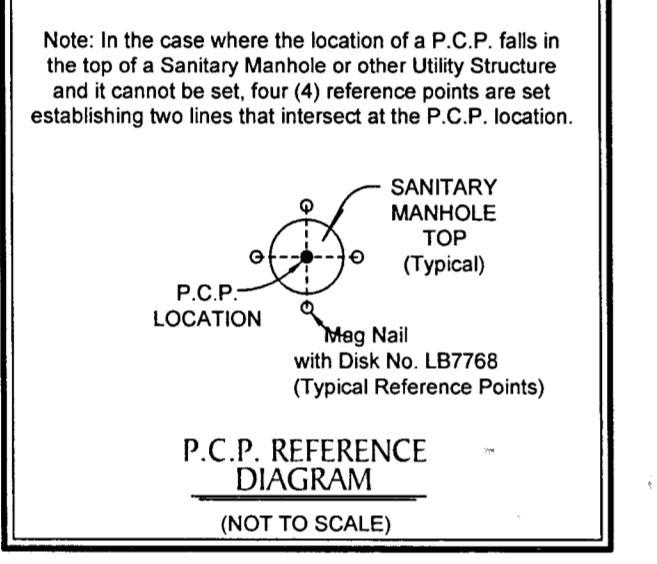
Line Data Table		
No.	Bearing	Length
L5	S12°59'54"E	59.46'
L6	S12°54'38"W	34.50'
L7	S32°38'50"W	50.06'
L8	S45°16'11"W	97.73'
L9	S63°59'57"W	77.60'
L10	S35°42'54"W	46.64'
L11	S03°06'55"E	57.46'
L12	S29°45'23"E	80.24'



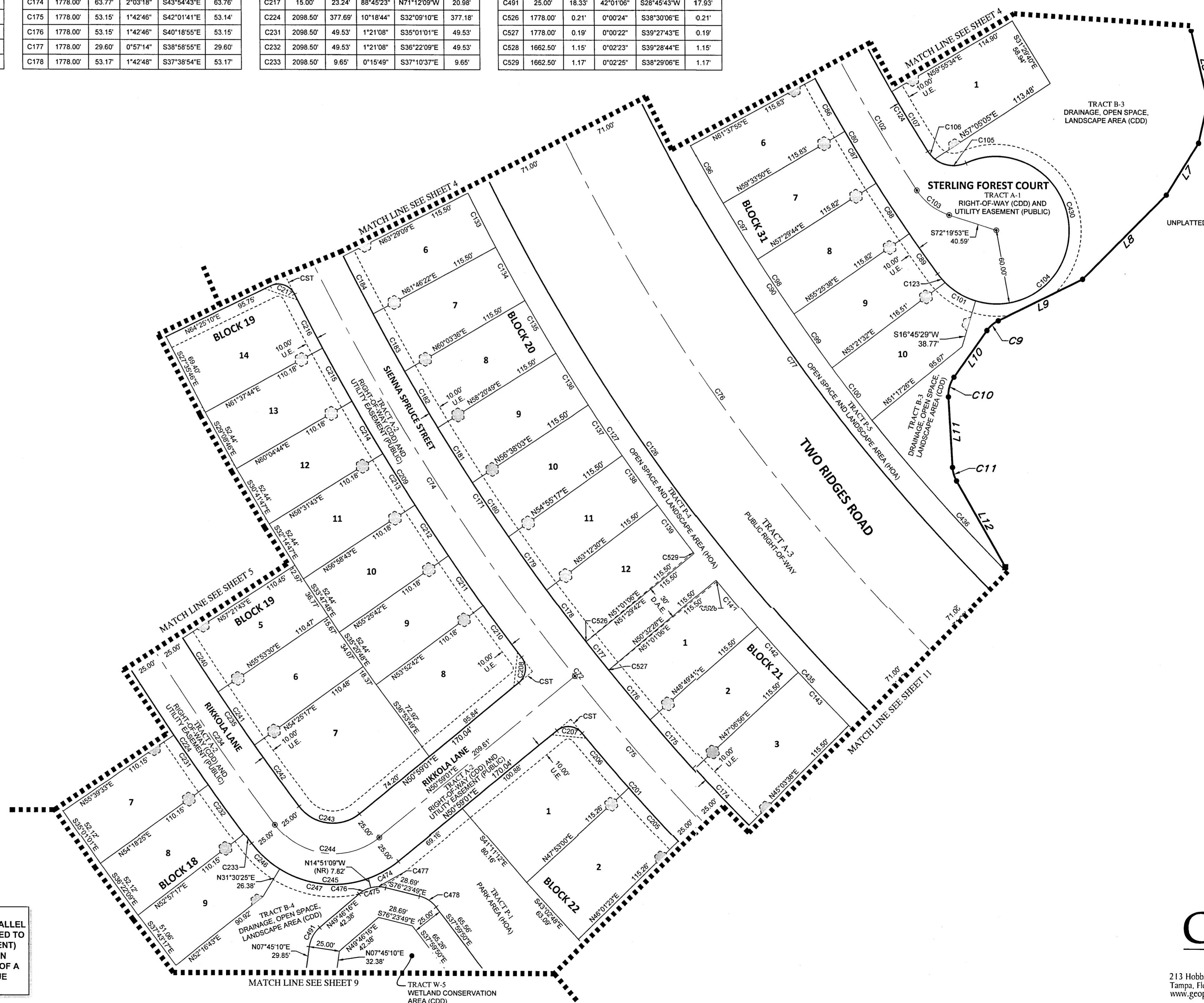
DETAIL OF LOTS THAT REQUIRE A 10.00' (CDD) SIDE YARD DRAINAGE/ACCESS EASEMENT PER PASCO COUNTY LAND DEVELOPMENT CODE SECTION 902.2.K.2.b, as AMENDED (NOT TO SCALE)



TYPICAL CLEAR SIGHT TRIANGLE (NOT TO SCALE)



P.C.P. REFERENCE DIAGRAM (NOT TO SCALE)



- LEGEND**
- Set (P.R.M.) Permanent Reference Monument 4"x4" Concrete Monument stamped LB7768 PRM
 - Found 4"x4" Concrete Monument as noted.
 - Set (P.C.P.) Permanent Control Point, Mag Nail & Disk, "LB7768 PCP"
 - Set (P.R.M.) Permanent Reference Monument 1/2" Iron Rod with cap "LB7768 PRM" or as Noted
 - (NR) --- Non-Radial
 - TYD --- Typical
 - S.W.F.W.M.D. --- Southwest Florida Water Management District
 - O.R.B. --- Official Records Book
 - Pg(s) --- Page(s)
 - U.E. --- Utility Easement
 - D.A.E. --- Drainage and Access Easement
 - B.E. --- Buffer Easement
 - W.E. --- Wall Easement
 - O/A --- Overall
 - TLO --- Tie-Line Only
 - C.C.R. --- Certified Corner Record
 - F.D.O.T. --- Florida Department of Transportation
 - CST --- Clear Sight Triangle Restriction (see detail this sheet)
 - --- Side Yard Drainage/Access Easement (see detail this sheet)

NOTE: EASEMENTS, BUFFERS AND OTHER SUCH LABELS AND DIMENSIONS OF A PARALLEL NATURE AS SHOWN HEREON AND INDICATED TO THE NEAREST FOOT (IE: 5' UTILITY EASEMENT) ARE ASSUMED TO BE THE SAME DIMENSION EXTENDED TO THE NEAREST HUNDRETH OF A FOOT WITH NO GREATER OR LESSER VALUE (IE: 5' = 5.00") (IE: 7.5' = 7.50")

GeoPoint
Surveying, Inc.

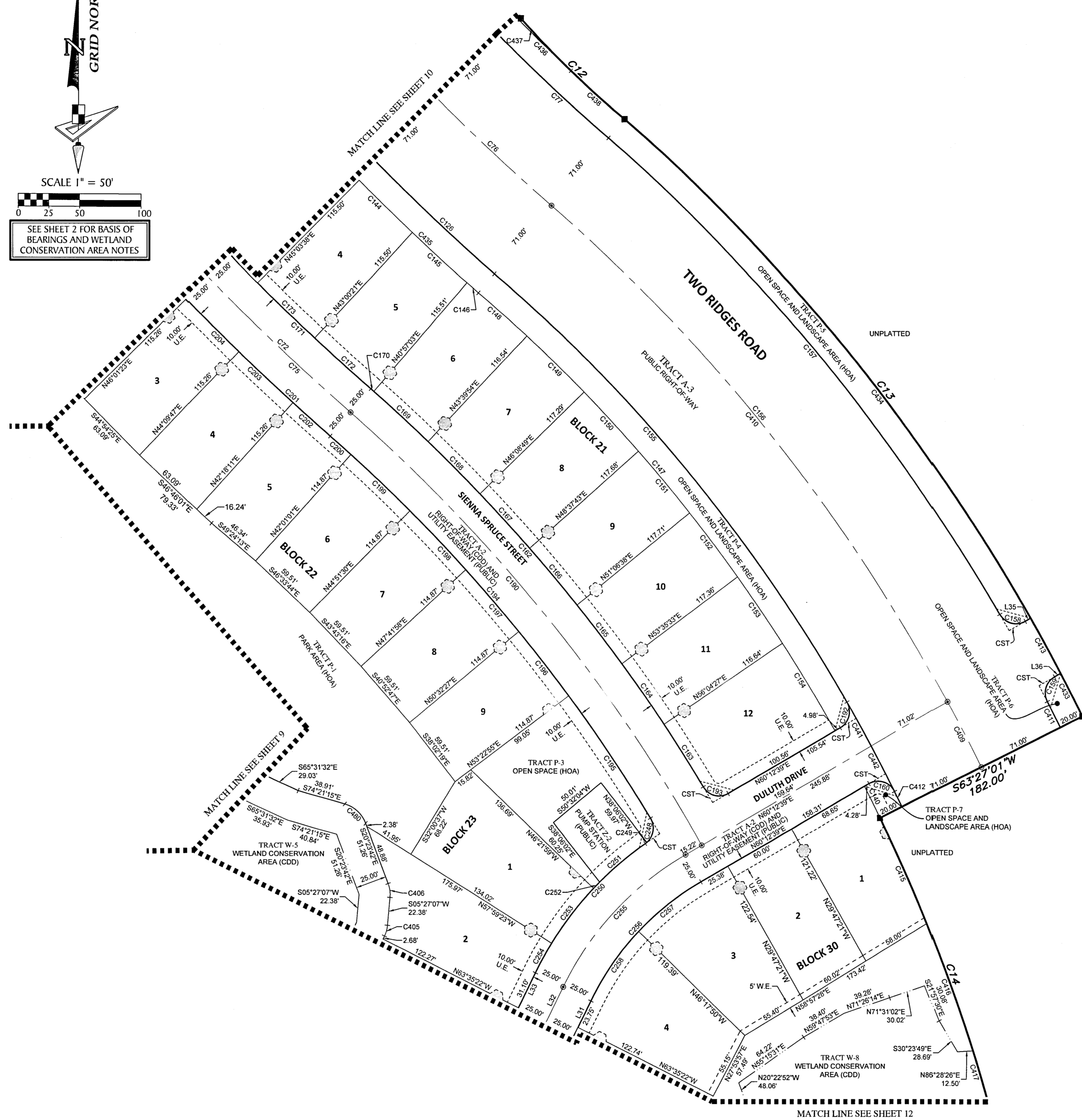
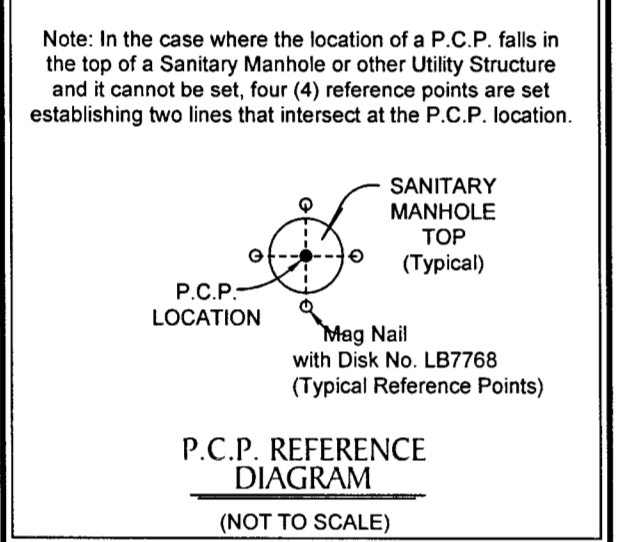
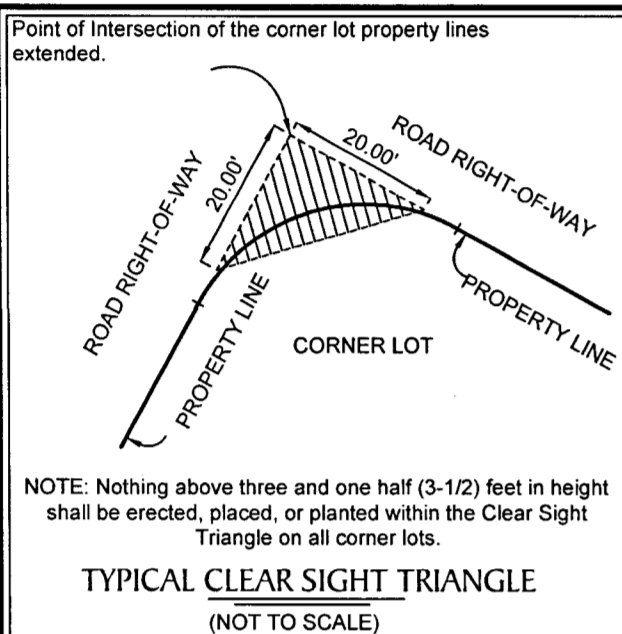
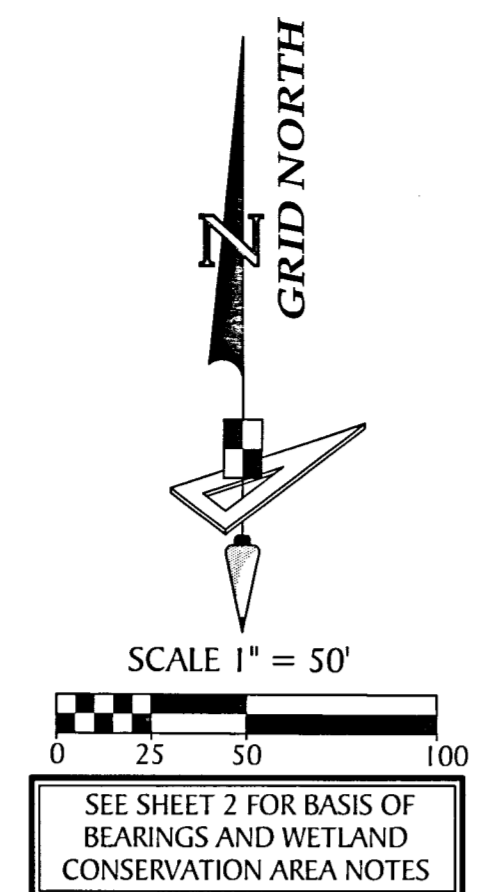
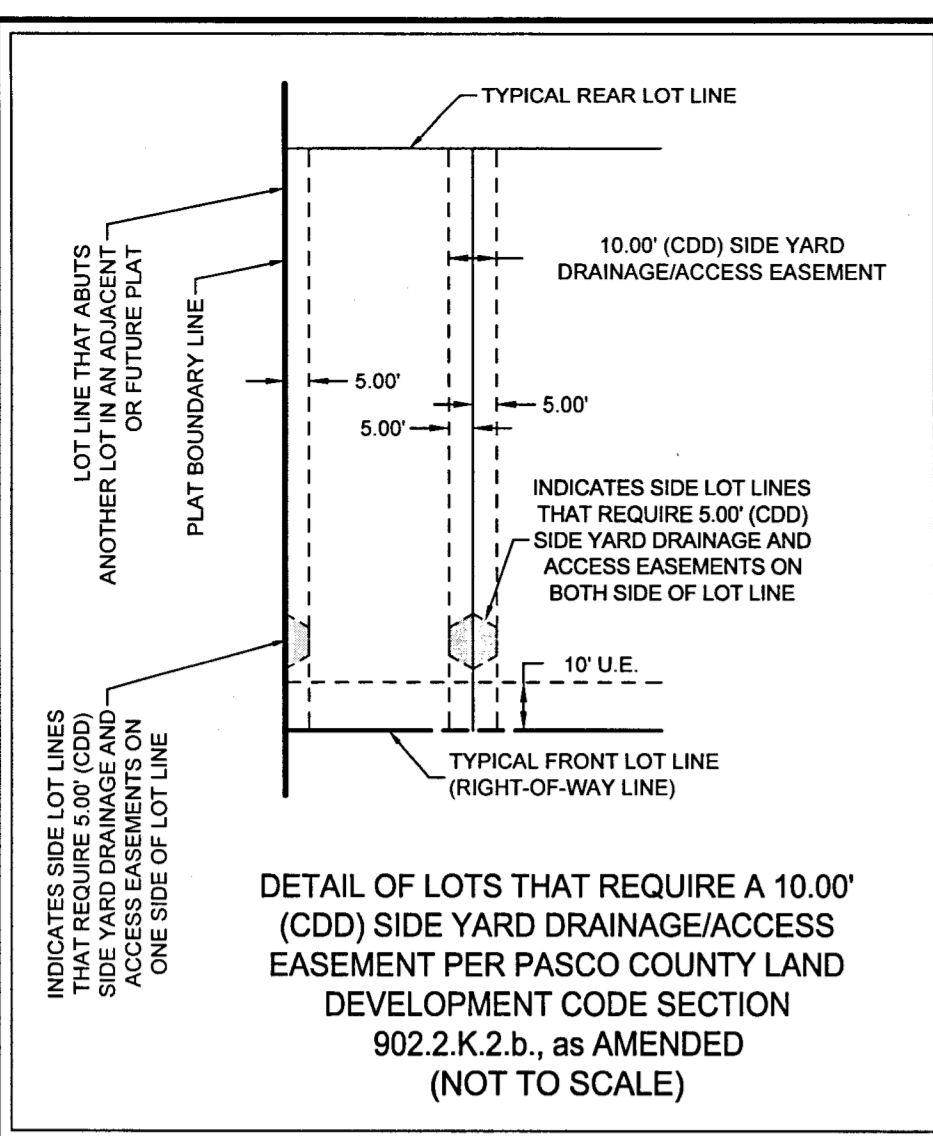
213 Hobbs Street
Tampa, Florida 33619
www.geopointsurvey.com

Phone: (813) 248-8888
Fax: (813) 248-2266
Licensed Business Number LB 7768

SHEET 10 OF 15 SHEETS

WYNDFIELDS PHASES 2A1 AND 2A2

A SUBDIVISION LYING IN SECTION 26, TOWNSHIP 26 SOUTH, RANGE 20 EAST, PASCO COUNTY, FLORIDA



Curve Data Table					
No.	Radius	Arc	Delta	Chord	
C12	778.53	116.01	8°32'16"	546°12'42"E	115.90
C13	1491.00	606.41	23°18'10"	S37°49'01"E	602.24
C14	1309.00	458.00	20°02'48"	S16°05'19"E	455.66
C72	1803.00	312.49	9°55'49"	S43°58'54"E	312.10
C75	1803.00	312.49	9°55'49"	S43°58'54"E	312.10
C76	1571.50	902.08	32°53'22"	S33°01'25"E	889.75
C77	1500.50	820.92	31°20'48"	S33°47'42"E	810.72
C126	1642.50	903.19	31°30'23"	S33°42'55"E	891.86
C140	1309.00	28.22	1°14'07"	N26°43'47"W	28.22
C144	1662.50	59.62	2°03'18"	S45°58'01"E	59.62
C145	1662.50	59.62	2°03'18"	S48°01'18"E	59.62
C146	1662.50	12.16	0°25'09"	S49°15'31"E	12.16
C147	1309.00	455.37	19°55'54"	N39°30'09"W	453.06
C148	1309.00	52.38	2°17'34"	N48°19'19"W	52.38
C149	1309.00	64.20	2°48'36"	N45°46'14"W	64.19
C150	1309.00	64.22	2°48'39"	N42°57'36"W	64.21
C151	1309.00	64.23	2°48'40"	N40°08'56"W	64.22
C152	1309.00	64.22	2°48'39"	N37°20'16"W	64.21
C153	1309.00	64.20	2°48'36"	N34°31'39"W	64.19
C154	1309.00	81.92	3°35'09"	N31°19'46"W	81.91
C155	1329.00	541.61	23°20'59"	N37°47'37"W	537.87
C156	1400.00	570.01	23°19'40"	N37°48'16"W	566.08
C157	1471.00	496.10	19°19'24"	N39°48'24"W	493.75
C158	15.00	23.47	89°38'39"	S74°58'02"E	21.15
C159	15.00	22.85	87°16'13"	S16°34'32"W	20.70
C160	15.00	24.37	93°05'15"	N73°14'44"W	21.78
C162	1365.00	416.84	17°29'48"	N40°11'54"W	415.22
C163	1365.00	58.98	2°28'32"	N32°41'17"W	58.98
C164	1365.00	59.13	2°28'55"	N35°10'00"W	59.12
C165	1365.00	59.13	2°28'55"	N37°38'55"W	59.12
C166	1365.00	59.13	2°28'55"	N40°07'49"W	59.12
C167	1365.00	59.13	2°28'55"	N42°36'44"W	59.12
C168	1365.00	59.13	2°28'55"	N45°05'39"W	59.12
C169	1365.00	59.04	2°28'42"	N47°34'27"W	59.04
C170	1365.00	3.18	0°08'00"	N48°52'48"W	3.18
C171	1778.00	964.08	31°04'02"	S33°24'47"E	952.31
C172	1778.00	60.59	1°57'09"	S47°58'14"E	60.59
C173	1778.00	63.77	2°03'18"	S45°58'01"E	63.76
C190	1340.00	448.05	19°09'27"	N39°22'05"W	445.96
C192	15.00	23.67	90°24'09"	N15°00'34"E	21.29
C193	15.00	23.13	88°20'21"	S75°37'11"E	20.90
C194	1315.00	400.34	17°26'36"	N40°13'30"W	398.80

Curve Data Table					
No.	Radius	Arc	Delta	Bearing	Chord
C195	1315.00	117.39	5°06'53"	N34°03'38"W	117.39
C196	1315.00	65.21	2°50'28"	N38°02'19"W	65.20
C197	1315.00	65.21	2°50'28"	N40°52'47"W	65.20
C198	1315.00	65.21	2°50'28"	N43°43'16"W	65.20
C199	1315.00	65.21	2°50'28"	N46°33'44"W	65.20
C200	1315.00	22.12	0°57'50"	N48°27'53"W	22.12
C201	1828.00	277.15	8°41'12"	S44°56'12"E	276.88
C202	1828.00	39.87	1°14'59"	S48°19'19"E	39.87
C203	1828.00	59.35	1°51'36"	S46°46'01"E	59.34
C204	1828.00	59.35	1°51'36"	S44°54'25"E	59.34
C248	15.00	22.70	86°41'50"	N11°50'43"E	20.59
C249	15.00	1.63	6°14'12"	N52°04'32"E	1.63
C250	275.00	138.15	28°47'00"	S04°48'08"W	136.70
C251	275.00	48.45	10°05'43"	S50°08'47"W	48.39
C252	275.00	7.03	1°27'54"	S44°21'58"W	7.03
C253	275.00	55.79	11°37'24"	S37°49'19"W	55.69
C254	275.00	26.88	5°35'59"	S29°12'37"W	26.87
C255	250.00	147.48	33°48'01"	S43°18'38"W	145.35
C256	225.00	132.73	33°48'01"	S43°18'38"W	130.82
C257	225.00	64.83	16°30'29"	S51°57'24"W	64.60
C258	225.00	67.91	17°17'32"	S35°03'24"W	67.65
C405	25.00	8.99	20°35'56"	N15°45'05"E	8.94
C406	25.00	11.28	25°50'48"	N07°28'17"W	11.18
C409	1400.00	58.38	2°23'21"	N27°20'07"W	58.38
C410	1400.00	511.63	20°56'19"	N38°59'57"W	508.78
C411	1471.00	23.06	0°53'57"	N26°36'35"W	23.06
C412	1329.00	13.53	0°34'59"	N28°24'37"W	13.53
C413	1491.00	50.01	1°55'19"	N28°38'23"W	50.01
C415	1309.00	120.47	5°12'33"	N24°42'39"W	120.43
C416	1309.00	107.63	4°42'40"	N19°43'07"W	107.60
C417	1309.00	218.48	9°33'46"	N12°34'54"W	218.22
C433	1491.00	38.51	1°28'48"	N26°54'20"W	38.51
C434	1491.00	517.88	19°54'03"	N39°31'94"W	515.28
C435	1662.50	290.43	10°00'34"	S44°27'49"E	290.06
C436	1480.50	219.88	8°30'34"	S42°58'08"E	219.68
C437	778.53	58.00	4°16'07"	S44°04'38"E	57.99
C438	778.53	58.01	4°16'08"	S48°20'46"E	57.99
C441	1329.00	40.11	1°43'45"	N29°19'37"W	40.11
C442	1329.00	40.84	1°45'38"	N27°34'56"W	40.84
C480	25.00	23.54	53°57'33"	N47°22'28"W	22.68

Line Data Table		
No.	Bearing	Length
L31	N26°24'38"E	92.63
L32	N26°24'38"E	92.63
L33	N26°24'38"E	92.63
L35	N60°12'39"E	5.02
L36	S60°12'39"W	5.64

- LEGEND**
- ----- Set (P.R.M.) Permanent Reference Monument 4"x4" Concrete Monument stamped LB7768 PRM
 - ----- Found 4"x4" Concrete Monument as noted.
 - ⊙ ----- Set (P.C.P.) Permanent Control Point, Mag Nail & Disk, "LB7768 PCP"
 - ----- Set (P.R.M.) Permanent Reference Monument 1/2" Iron Rod with cap "LB7768 PRM" or as Noted
 - (NR) ----- Non-Radial
 - TYP ----- Typical
 - S.W.F.W.M.D. ----- Southwest Florida Water Management District
 - O.R.B. ----- Official Records Book
 - Pg(s). ----- Page(s)
 - U.E. ----- Utility Easement
 - D.A.E. ----- Drainage and Access Easement
 - B.E. ----- Buffer Easement
 - W.E. ----- Wall Easement
 - O/A ----- Overall
 - TLO ----- Tie-Line Only
 - C.C.R. ----- Certified Corner Record
 - F.D.O.T. ----- Florida Department of Transportation
 - CST ----- Clear Sight Triangle Restriction (see detail this sheet)
 - ----- Side Yard Drainage/Access Easement (see detail this sheet)

NOTE: EASEMENTS, BUFFERS AND OTHER SUCH LABELS AND DIMENSIONS OF A PARALLEL NATURE AS SHOWN HEREON AND INDICATED TO THE NEAREST FOOT (IE: 5' UTILITY EASEMENT) ARE ASSUMED TO BE THE SAME DIMENSION EXTENDED TO THE NEAREST HUNDRETH OF A FOOT WITH NO GREATER OR LESSER VALUE (IE: 5' = 5.00") (IE: 7.5' = 7.50")

GeoPoint
Surveying, Inc.

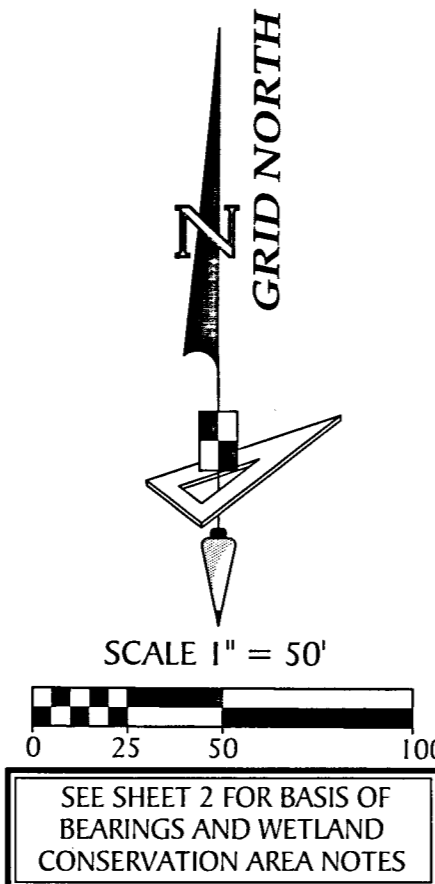
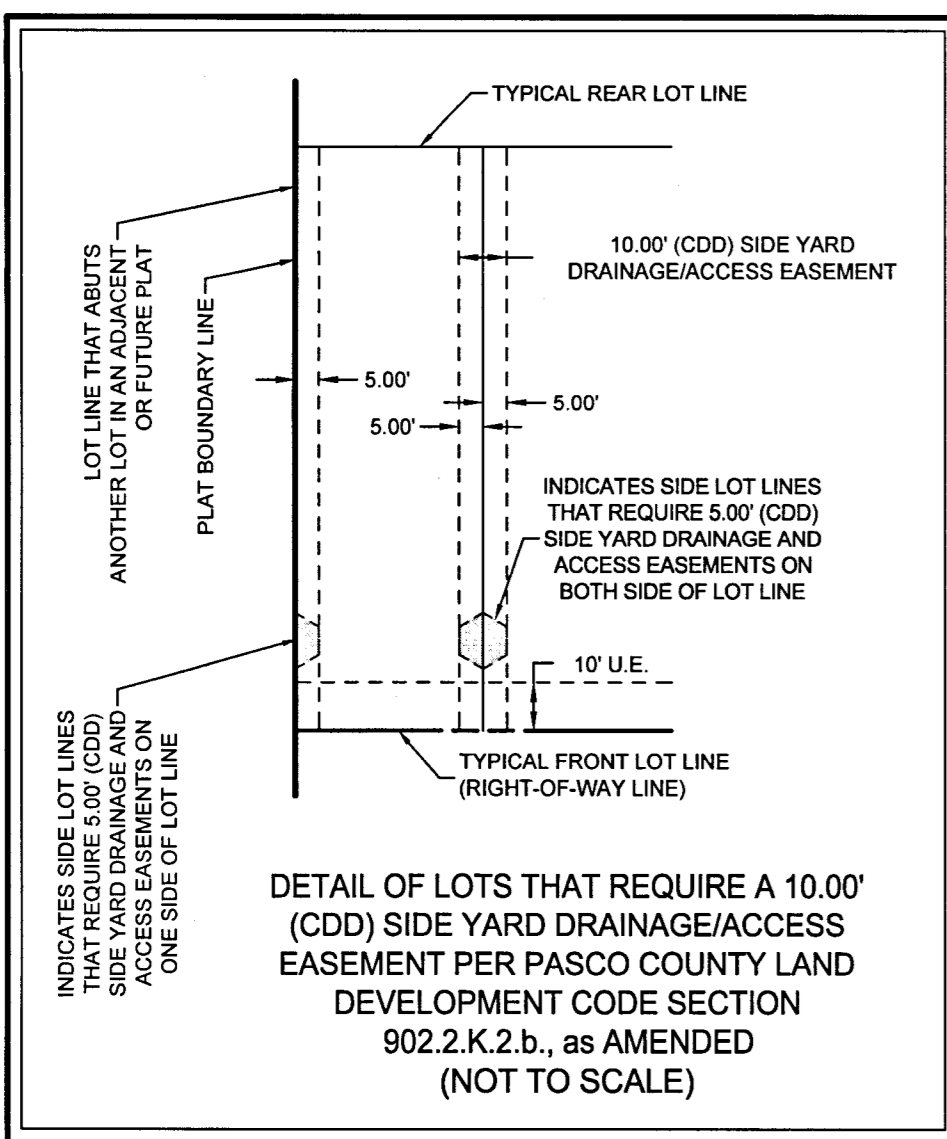
213 Hobbs Street
Tampa, Florida 33619
www.geopointsurvey.com

Phone: (813) 248-8888
Fax: (813) 248-2266
Licensed Business Number LB 7768

SHEET 11 OF 15 SHEETS

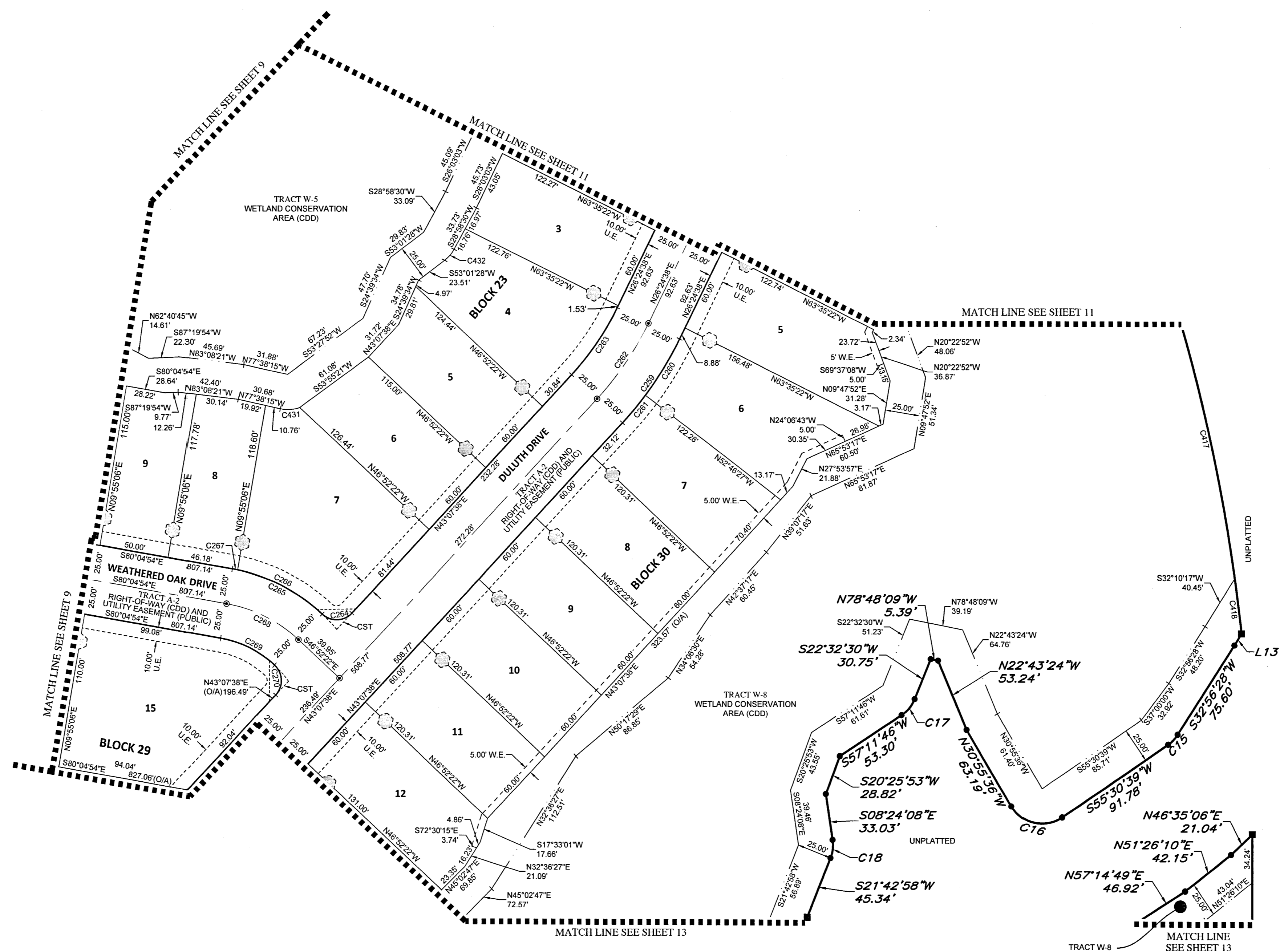
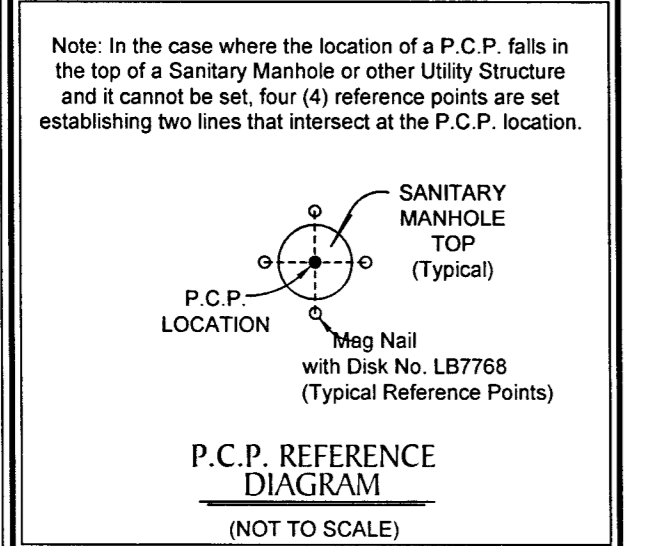
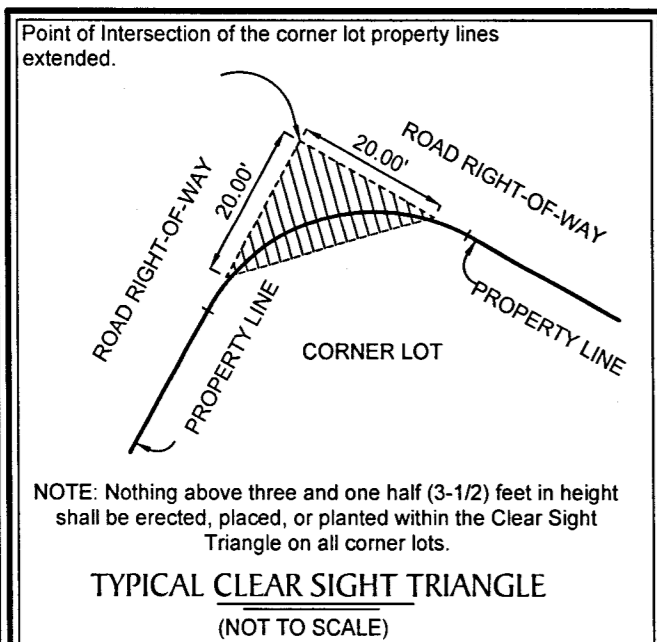
WYNDFIELDS PHASES 2A1 AND 2A2

A SUBDIVISION LYING IN SECTION 26, TOWNSHIP 26 SOUTH, RANGE 20 EAST, PASCO COUNTY, FLORIDA



Curve Data Table					
No.	Radius	Arc	Delta	Bearing	Chord
C15	25.00'	9.85'	22°34'11"	S44°13'34"W	9.78'
C16	25.00'	40.82'	93°33'45"	N77°42'28"W	36.44'
C17	25.00'	15.12'	34°39'16"	S39°52'08"W	14.89'
C18	25.00'	13.14'	30°07'06"	S06°39'25"W	12.99'
C259	250.00'	72.94'	16°43'01"	N34°46'08"E	72.68'
C260	250.00'	47.19'	10°48'55"	N31°49'05"E	47.12'
C281	250.00'	25.75'	5°54'05"	N40°10'36"E	25.74'
C262	225.00'	65.65'	16°43'01"	N34°46'08"E	65.41'
C263	200.00'	58.35'	16°43'01"	N34°46'08"E	58.15'
C264	15.00'	23.56'	89°58'51"	N88°07'04"E	21.21'
C265	125.00'	72.41'	33°11'23"	N63°29'12"W	71.40'
C266	125.00'	68.59'	31°26'25"	N62°36'43"W	67.73'
C267	125.00'	3.82'	1°44'58"	N79°12'24"W	3.82'
C268	100.00'	57.96'	33°12'32"	N63°28'38"W	57.15'
C269	75.00'	43.41'	33°09'51"	N63°29'58"W	42.81'
C270	15.00'	23.57'	90°02'41"	N01°53'42"W	21.22'
C417	1309.00'	218.48'	9°33'46"	N12°34'54"W	218.22'
C418	1309.00'	39.64'	1°44'06"	N06°55'58"W	39.64'
C431	25.00'	14.00'	32°05'22"	N66°19'04"E	13.82'
C432	25.00'	10.49'	24°02'58"	N40°59'59"E	10.42'

Line Data Table		
No.	Bearing	Length
L13	S32°10'17"W	9.86'



- LEGEND**
- ----- Set (P.R.M.) Permanent Reference Monument 4"x4" Concrete Monument stamped LB7768 PRM
 - ----- Found 4"x4" Concrete Monument as noted.
 - ----- Set (P.C.P.) Permanent Control Point, Mag Nail & Disk, "LB7768 P.C.P."
 - ----- Set (P.R.M.) Permanent Reference Monument 1/2" Iron Rod with cap "LB7768 PRM" or as Noted
 - (NR) ----- Non-Radial
 - TYP ----- Typical
 - S.W.F.W.M.D. ----- Southwest Florida Water Management District
 - O.R.B. ----- Official Records Book
 - Pg(s) ----- Page(s)
 - U.E. ----- Utility Easement
 - D.A.E. ----- Drainage and Access Easement
 - B.E. ----- Buffer Easement
 - W.E. ----- Wall Easement
 - O/A ----- Overall
 - TLO ----- Tie-Line Only
 - C.C.R. ----- Certified Corner Record
 - F.D.C.T. ----- Florida Department of Transportation
 - CST ----- Clear Sight Triangle Restriction (see detail this sheet)
 - ----- Side Yard Drainage/Access Easement (see detail this sheet)

NOTE: EASEMENTS, BUFFERS AND OTHER SUCH LABELS AND DIMENSIONS OF A PARALLEL NATURE AS SHOWN HEREON AND INDICATED TO THE NEAREST FOOT (IE: 5' UTILITY EASEMENT) ARE ASSUMED TO BE THE SAME DIMENSION EXTENDED TO THE NEAREST HUNDREDTH OF A FOOT WITH NO GREATER OR LESSER VALUE (IE: 5' = 5.00") (IE: 7.5' = 7.50")

GeoPoint
Surveying, Inc.

213 Hobbs Street
Tampa, Florida 33619
www.geopointsurveying.com

Phone: (813) 248-8888
Fax: (813) 248-2266
Licensed Business Number LB 7768

SHEET 12 OF 15 SHEETS

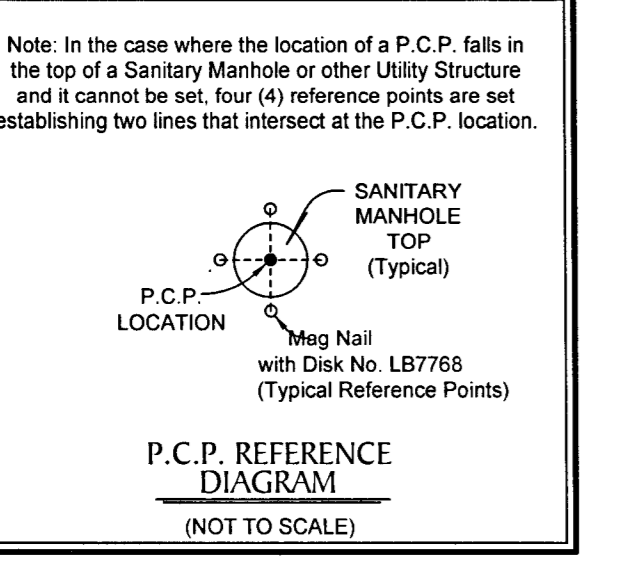
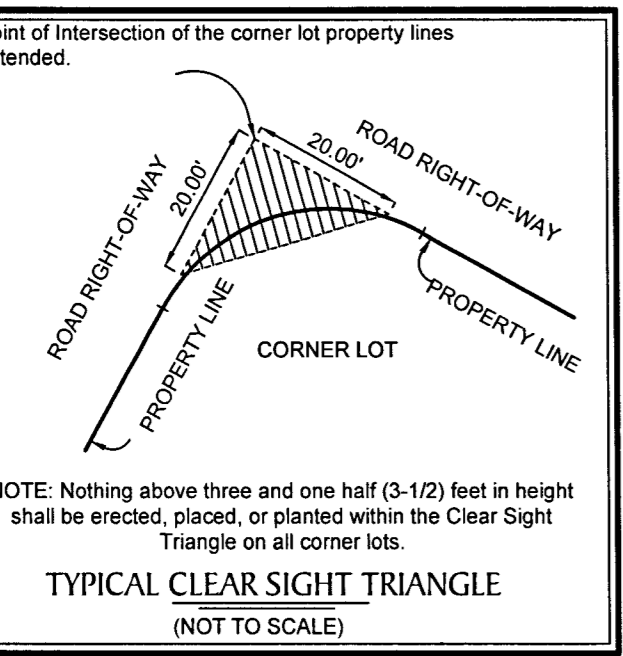
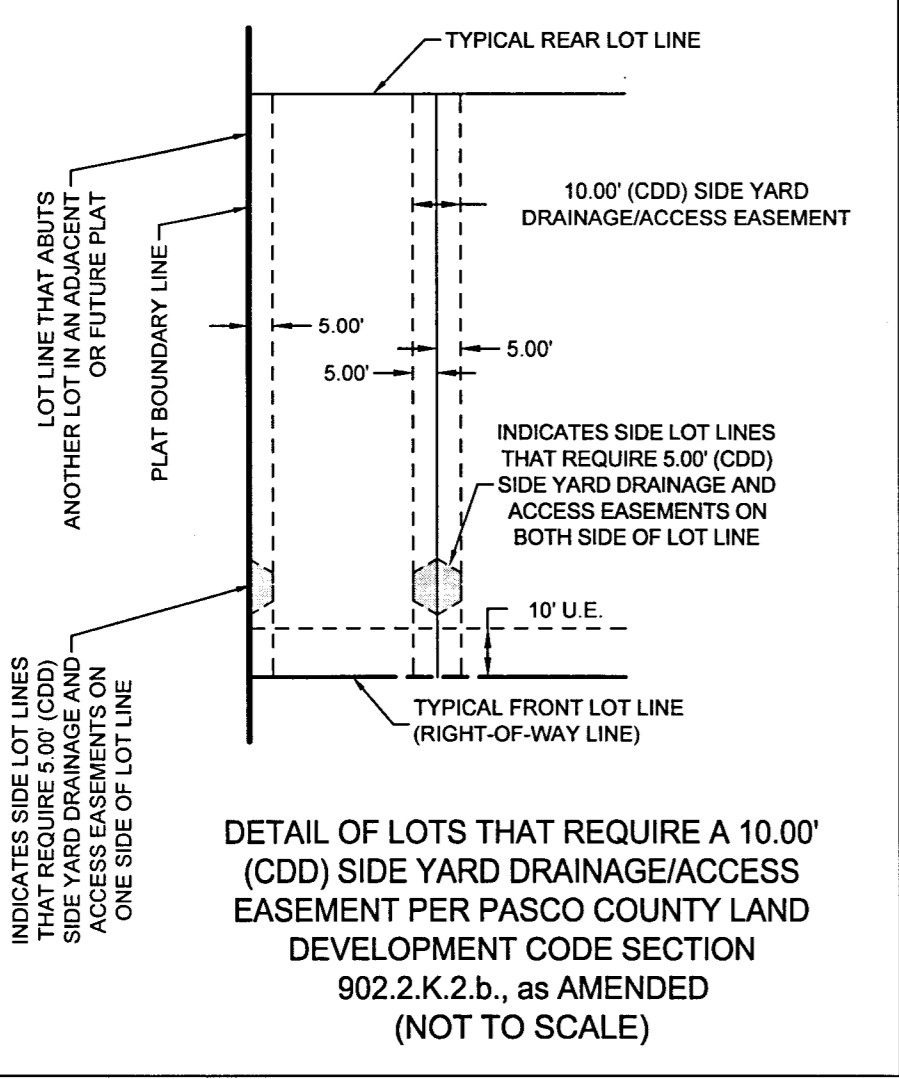
WYNDFIELDS PHASES 2A1 AND 2A2

A SUBDIVISION LYING IN SECTION 26, TOWNSHIP 26 SOUTH, RANGE 20 EAST, PASCO COUNTY, FLORIDA



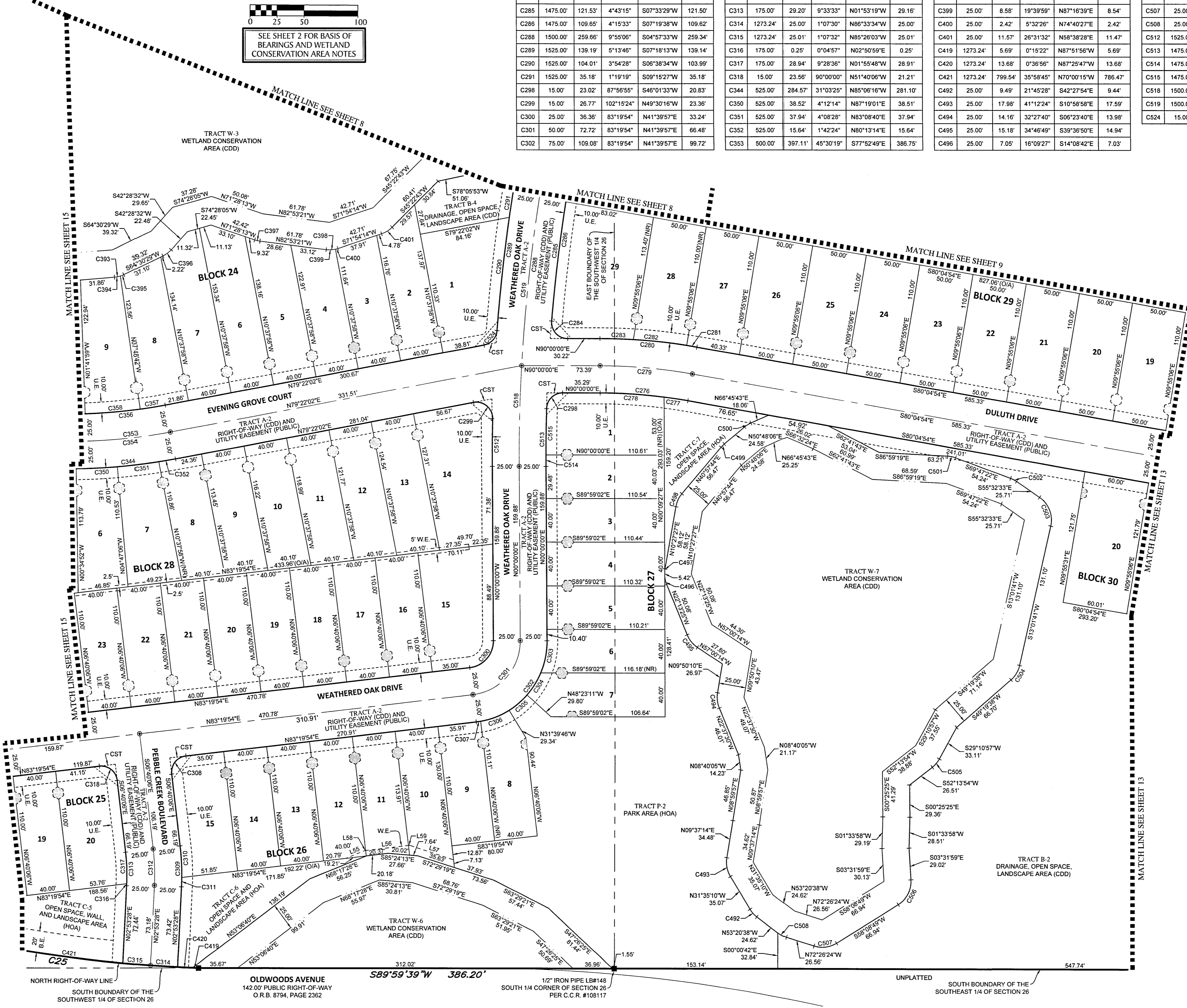
SCALE 1" = 50'

No.	Bearing	Length	No.	Radius	Arc	Delta	Bearing	Chord	No.	Radius	Arc	Delta	Bearing	Chord	No.	Radius	Arc	Delta	Bearing	Chord	No.	Radius	Arc	Delta	Bearing	Chord
L55	S88°14'29"W	19.21'	C25	1273.24'	799.54'	35°58'45"	N70°00'15"W	786.47'	C303	75.00'	30.42'	23°14'29"	N11°37'14"E	39.21'	C354	500.00'	309.92'	35°30'53"	S82°52'32"E	304.99'	C487	25.00'	1.78'	4°04'35"	S08°25'09"W	1.78'
L56	S83°19'54"W	40.00'	C276	475.00'	82.23'	9°55'06"	N85°02'27"W	82.12'	C304	75.00'	24.05'	18°22'20"	N32°25'39"E	23.95'	C356	475.00'	307.25'	45°30'19"	S77°52'49"E	367.42'	C488	25.00'	1.31'	30°30'17"	S25°42'36"W	1.31'
L57	N72°00'14"W	42.81'	C277	475.00'	22.50'	2°42'51"	N81°26'19"W	22.50'	C305	75.00'	21.89'	16°43'24"	N45°58'31"E	21.81'	C357	475.00'	23.39'	2°49'17"	N80°46'40"E	23.39'	C489	25.00'	4.29'	9°50'21"	S45°52'55"W	4.29'
L58	N72°00'14"W	0.66'	C278	475.00'	59.73'	7°12'15"	N86°23'52"W	59.69'	C306	75.00'	28.63'	21°52'19"	N69°16'23"E	28.48'	C358	475.00'	50.67'	6°06'43"	N85°14'40"E	50.65'	C490	25.00'	6.96'	15°57'37"	S58°46'54"W	6.94'
L59	S83°19'54"W	1.09'	C279	500.00'	86.55'	9°55'06"	N85°02'27"W	86.45'	C307	75.00'	4.09'	3°07'21"	N81°46'14"E	4.09'	C359	25.00'	9.06'	20°46'14"	N74°53'36"E	9.01'	C501	25.00'	7.50'	17°11'56"	N78°23'20"W	7.48'
			C280	525.00'	90.88'	9°55'06"	N85°02'27"W	90.77'	C308	15.00'	23.56'	9°00'00"	S38°19'54"W	21.21'	C360	25.00'	5.69'	11°25'09"	S77°10'47"E	4.97'	C502	25.00'	6.22'	14°14'49"	N62°39'58"W	6.20'
			C281	525.00'	9.67'	1°03'18"	N80°36'33"W	9.67'	C309	225.00'	37.54'	9°33'33"	N01°53'19"W	37.50'	C361	25.00'	3.37'	7°43'43"	N68°22'21"E	3.37'	C503	25.00'	29.82'	68°34'14"	N21°15'26"W	28.17'
			C282	525.00'	50.13'	5°28'15"	N83°52'20"W	50.11'	C310	225.00'	28.89'	7°21'27"	N02°59'22"W	28.87'	C362	25.00'	9.61'	22°01'57"	N53°29'31"E	9.55'	C504	25.00'	15.84'	36°17'57"	N31°10'40"E	15.57'
			C283	525.00'	31.08'	3°23'33"	N88°18'14"W	31.08'	C311	225.00'	8.65'	2°12'06"	N01°47'24"E	8.65'	C363	25.00'	4.98'	11°25'09"	S77°10'47"E	4.97'	C505	25.00'	10.06'	23°02'58"	N40°42'25"E	9.99'
			C284	15.00'	24.92'	95°11'52"	S42°24'04"E	22.15'	C312	200.00'	33.37'	9°33'33"	N01°53'19"W	33.33'	C364	25.00'	11.00'	25°12'24"	N84°30'26"E	10.91'	C506	25.00'	26.91'	61°40'48"	N27°18'25"E	25.63'
			C285	1475.00'	121.53'	4°43'15"	S07°33'29"W	121.50'	C313	175.00'	29.20'	9°33'33"	N01°53'19"W	29.16'	C365	25.00'	8.55'	19°39'59"	N87°16'39"E	8.54'	C507	25.00'	21.56'	49°24'47"	N82°51'13"E	20.90'
			C286	1475.00'	109.65'	4°15'33"	S07°19'38"W	109.62'	C314	1273.24'	25.00'	1°07'30"	N86°33'34"W	25.00'	C400	25.00'	2.42'	5°32'26"	N74°40'27"E	2.42'	C508	25.00'	8.33'	19°05'46"	S62°53'31"E	8.29'
			C288	1500.00'	256.66'	9°55'06"	S04°57'33"W	259.34'	C315	1273.24'	25.01'	1°07'32"	N85°26'03"W	25.01'	C401	25.00'	11.57'	26°31'32"	N58°38'28"E	11.47'	C512	1525.00'	43.22'	1°37'26"	S00°48'43"W	43.22'
			C289	1525.00'	139.19'	5°13'46"	S07°16'13"W	139.14'	C316	175.00'	0.25'	0°04'57"	N02°50'59"E	0.25'	C419	1273.24'	5.69'	0°15'22"	N87°51'56"W	5.69'	C513	1475.00'	52.81'	2°03'05"	S01°01'33"W	52.81'
			C290	1525.00'	104.01'	3°54'28"	S06°38'34"W	103.99'	C317	175.00'	28.84'	9°28'36"	N01°55'48"W	28.91'	C420	1273.24'	139.64'	0°36'56"	N87°25'47"W	138.68'	C514	1475.00'	10.51'	0°24'30"	S00°15'28"W	10.51'
			C291	1525.00'	35.18'	1°19'19"	S09°15'27"W	35.18'	C318	15.00'	23.56'	9°00'00"	N51°40'06"W	21.21'	C421	1273.24'	79.58'	3°56'54"	N70°00'15"W	78.67'	C515	1475.00'	42.30'	1°38'35"	S01°13'48"W	42.30'
			C298	15.00'	23.02'	87°55'55"	S45°01'33"W	20.83'	C344	525.00'	284.57'	31°03'25"	N85°06'16"W	281.10'	C492	25.00'	9.49'	21°45'28"	S42°27'54"E	9.44'	C516	1500.00'	92.32'	3°31'35"	S01°45'48"W	92.31'
			C299	15.00'	26.77'	102°18'24"	N49°30'16"W	23.36'	C350	525.00'	38.52'	4°12'14"	N87°19'01"E	37.94'	C493	25.00'	17.98'	41°12'24"	S10°58'58"E	17.59'	C517	1500.00'	167.34'	6°23'31"	S06°43'21"W	167.25'
			C300	25.00'	36.36'	83°19'54"	N41°39'57"E	33.24'	C351	525.00'	37.94'	4°08'28"	N83°08'40"E	37.94'	C494	25.00'	14.16'	32°27'40"	S06°23'40"E	13.98'	C518	1500.00'	167.34'	6°23'31"	S06°43'21"W	167.25'
			C301	50.00'	72.72'	83°19'54"	N41°39'57"E	66.48'	C352	525.00'	15.61'	1°42'24"	N80°13'14"E	15.64'	C495	25.00'	15.18'	34°48'49"	S39°36'50"E	14.94'	C519	1500.00'	167.34'	6°23'31"	S06°43'21"W	167.25'
			C302	75.00'	109.08'	83°19'54"	N41°39'57"E	99.72'	C353	500.00'	397.11'	45°30'19"	S77°52'49"E	386.75'	C496	25.00'	7.05'	16°09'27"	S14°08'42"E	7.03'						



NOTE: EASEMENTS, BUFFERS AND OTHER SUCH LABELS AND DIMENSIONS OF A PARALLEL NATURE AS SHOWN HEREON AND INDICATED TO THE NEAREST FOOT (IE: 5' UTILITY EASEMENT) ARE ASSUMED TO BE THE SAME DIMENSION EXTENDED TO THE NEAREST HUNDRETH OF A FOOT WITH NO GREATER OR LESSER VALUE (IE: 5' = 5.00") (IE: 7.5' = 7.50")

- LEGEND**
- Set (P.R.M.) Permanent Reference Monument 4"x4" Concrete Monument stamped LB7768 PRM
 - Found 4"x4" Concrete Monument as noted.
 - Set (P.C.P.) Permanent Control Point, Mag Nail & Disk, "LB7768 P.C.P."
 - Set (P.R.M.) Permanent Reference Monument 1/2" Iron Rod with cap "LB7768 PRM" or as Noted
 - (NR) Non-Radial
 - TYP. Typical
 - S.W.F.W.M.D. Southwestern Florida Water Management District
 - O.R.B. Official Records Book
 - Pg(s). Page(s)
 - U.E. Utility Easement
 - D.A.E. Drainage and Access Easement
 - B.E. Buffer Easement
 - W.E. Wall Easement
 - O/A Overall
 - Tie-Line Only
 - C.C.R. Certified Corner Record
 - F.D.O.T. Florida Department of Transportation
 - CST Clear Sight Triangle Restriction (see detail this sheet)
 - Side Yard Drainage/Access Easement (see detail this sheet)



GeoPoint Surveying, Inc.
 213 Hobbs Street
 Tampa, Florida 33619
 www.geopointsurvey.com
 Phone: (813) 248-8888
 Fax: (813) 248-2266
 Licensed Business Number LB 7768

