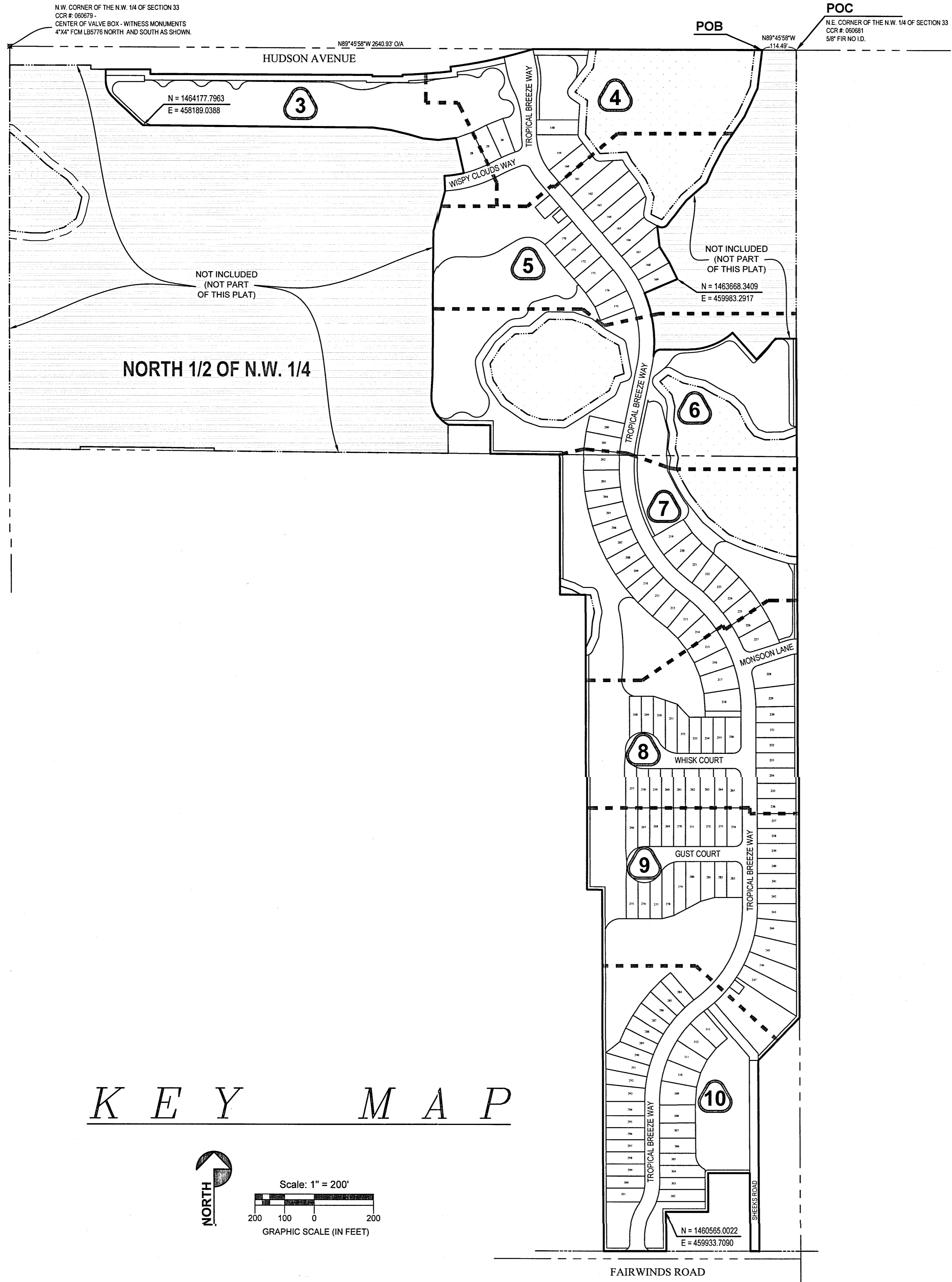


PALM WIND - PHASE 1

A SUBDIVISION OF A PORTION OF THE WEST 1/2 OF SECTION 33, TOWNSHIP 24 SOUTH, RANGE 17 EAST, PASCO COUNTY, FLORIDA



- LEGEND**
- FOUND 4"x4" CONCRETE MONUMENT (UNLESS OTHERWISE NOTED)
 - SET 4"x4" CONCRETE MONUMENT PRM LB 3913
 - SET PK NAIL & DISK PRM LB 3913
 - FOUND PK NAIL & DISK PRM LB 3913
 - ⊙ PERMANENT CONTROL POINT SET LB 3913 PK NAIL & DISK
- POINT OF CURVATURE AND POINT OF TANGENCY ON CURVE
- MATCH LINE
- AAUE = ACCESS & UTILITY EASEMENT
CL = CENTERLINE
CCR = CERTIFIED CORNER RECORD
CST = CLEAR SIGHT TRIANGLE
D.E. = DRAINAGE EASEMENT
FCM = FOUND CONCRETE MONUMENT
FIR = FOUND IRON ROD
HOA = HOMEOWNERS ASSOCIATION
LB = LICENSED BUSINESS
NAD83 = NORTH AMERICAN DATUM 1983
N.T.S. = NOT TO SCALE
O.R. = OFFICIAL RECORDS
(NR) = NON-RADIAL
OIA = OVER ALL
RW = RIGHT-OF-WAY
(R) = RADIAL
POB = POINT OF BEGINNING
POC = POINT OF COMMENCEMENT
PCP = PERMANENT CONTROL POINT
PRM = PERMANENT REFERENCE MONUMENT
P.D.E. = PUBLIC DRAINAGE EASEMENT

GENERAL NOTES:

1. THE COORDINATE VALUES SHOWN HEREON ARE BASED ON THE PASCO COUNTY PRIMARY HORIZONTAL CONTROL NETWORK AND WERE ESTABLISHED TO THIRD ORDER CLASS I ACCURACY AS DEFINED BY THE STANDARDS AND SPECIFICATIONS FOR GEODETIC CONTROL NETWORKS, AS PUBLISHED BY THE FEDERAL GEODETIC COMMITTEE DATED SEPTEMBER 1984 OR LATEST EDITION. (POLDC 306.10)
2. BASIS OF BEARINGS: NORTHERLY BOUNDARY LINE OF THE N.W. 1/4 OF SECTION 33, BEARS S.89°45'58"E., (GRID).
3. NO PERMANENT PRIVATE STRUCTURES INCLUDING MASONRY OR CONCRETE BLOCK WALLS ARE TO BE LOCATED WITHIN EASEMENTS ON RESIDENTIAL LOTS.
4. ALL UTILITY EASEMENTS SHALL ALSO BE EASEMENTS FOR THE CONSTRUCTION, INSTALLATION, MAINTENANCE, AND OPERATION OF CABLE TELEVISION SERVICES; PROVIDED, HOWEVER NO SUCH CONSTRUCTION, INSTALLATION, MAINTENANCE, AND OPERATION OF CABLE TELEVISION SERVICES SHALL INTERFERE WITH THE FACILITIES AND SERVICES OF AN ELECTRIC, TELEPHONE, GAS, OR OTHER PUBLIC UTILITY. IN THE EVENT A CABLE TELEVISION COMPANY DAMAGES THE FACILITIES OF A PUBLIC UTILITY, IT SHALL BE SOLELY RESPONSIBLE FOR THE DAMAGES.
5. THIS PLAT CONTAINS EASEMENTS AND OTHER COMMON AREAS WHICH ARE NEITHER OWNED NOR MAINTAINED BY PASCO COUNTY.
6. PERMANENT CONTROL POINTS SET BY LANDMARK ENGINEERING & SURVEYING CORPORATION WILL BE A SET NAIL WITH DISC STAMPED "PCP LB 3913". LOT AND TRACT CORNERS SET BY LANDMARK ENGINEERING & SURVEYING CORPORATION WILL BE SET 5/8" IRON ROD WITH CAP STAMPED "LB 3913" (IN SOFT SURFACES) OR A SET NAIL WITH DISC STAMPED "LB 3913" (IN HARD SURFACES). MONUMENTS ARE FOUND OR SET AT EACH LOT CORNER, POINT OF INTERSECTION AND CHANGES OF DIRECTION OF LINES WITHIN THE SUBDIVISION AS REQUIRED BY CHAPTER 177 OF THE FLORIDA STATUTES. WHERE CORNERS COULD NOT BE SET WITNESS CORNERS ARE FOUND OR WILL BE SET AS NOTED.

TRACT TABLE:

TRACT A [INGRESS-EGRESS EASEMENT (HOA), DRAINAGE EASEMENT (HOA) AND UTILITY EASEMENT (PUBLIC)]

TRACTS B-1, B-2, B-3, B-4, B-5, B-6, B-7, B-8, B-9, B-10, B-11 AND B-12 (OPEN AREAS)

TRACT D-2, D-3, D-6, D-7, D-8, D-9, D-10, D-11 AND D-13 (DRAINAGE AREAS)

TRACTS LB-2, LB-3, LB-5, LE-6, LB-7, LB-8, AND LB-10 (LANDSCAPE BUFFERS)

TRACT P-1 (AMENITY SITE)

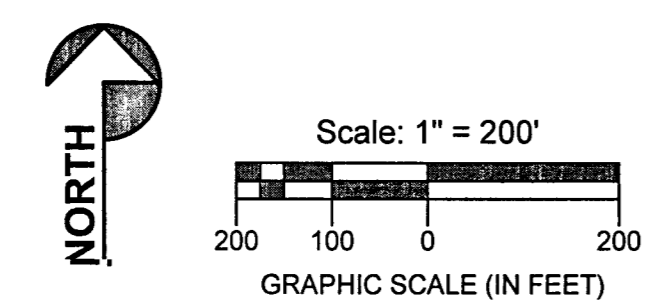
TRACT P-2 (PARK AREA)

TRACT S-1 (PUBLIC WASTE WATER LIFT STATION)

TRACTS S-2 AND S-3 (IRRIGATION SITES)

TRACTS W-2, W-3, W-4, AND W-5 (WETLAND CONSERVATION AREAS)

KEY MAP



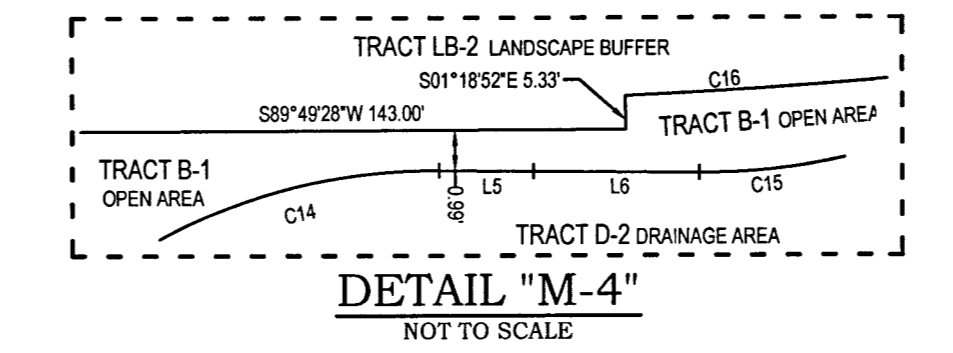
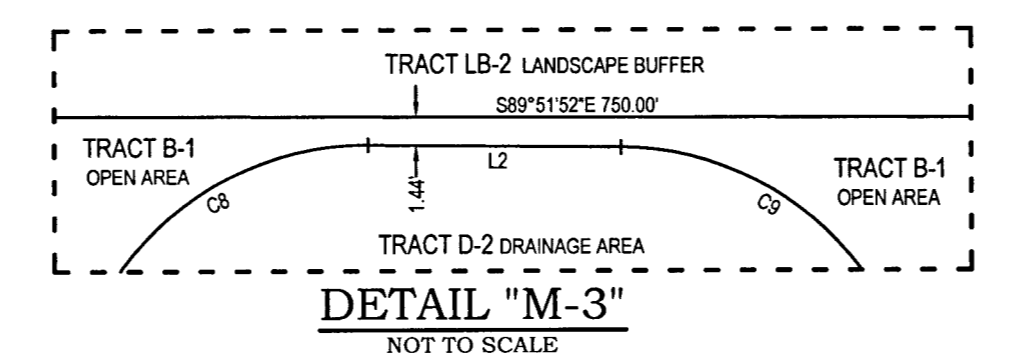
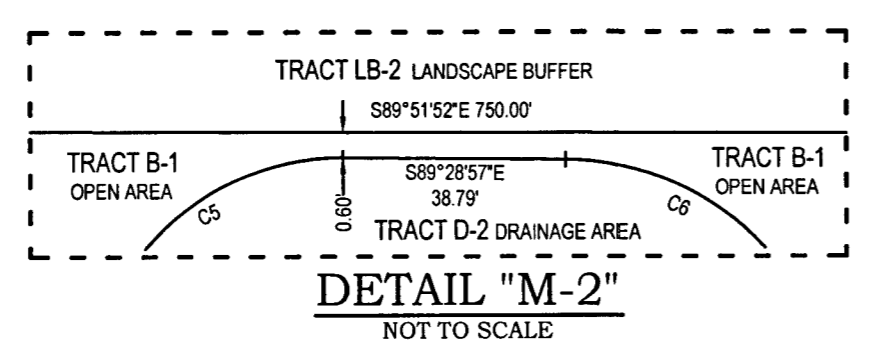
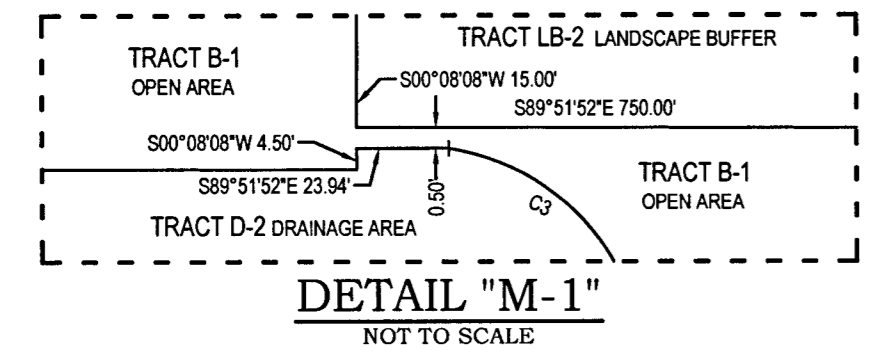
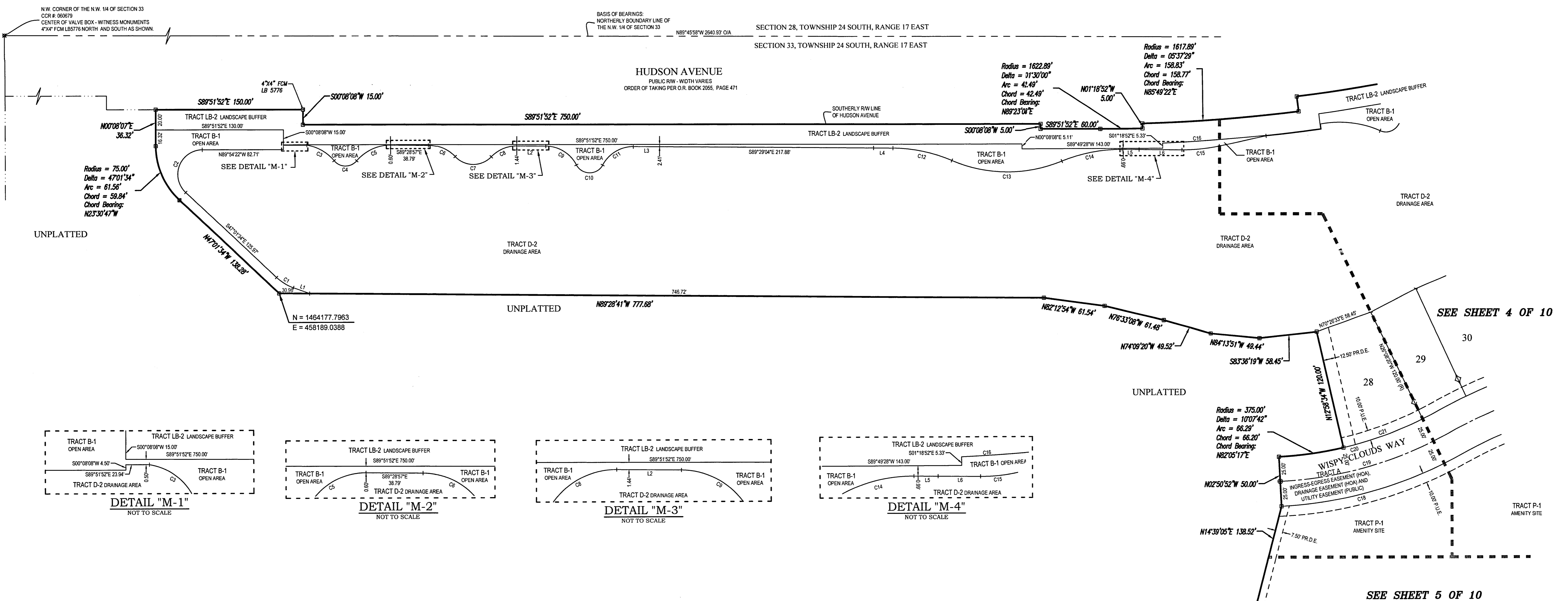
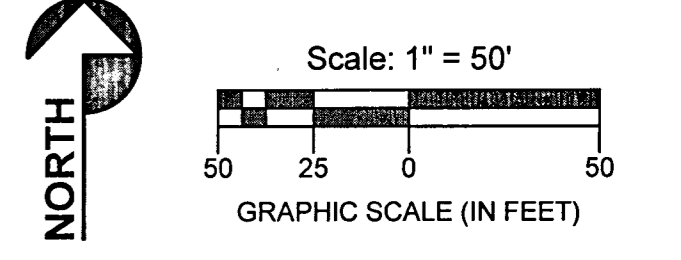
NOTICE:
THIS PLAT, AS RECORDED IN ITS GRAPHIC FORM, IS THE OFFICIAL DEPICTION OF THE SUBDIVIDED LANDS DESCRIBED HEREIN AND WILL IN NO CIRCUMSTANCES BE SUPPLANTED IN AUTHORITY BY ANY OTHER GRAPHIC OR DIGITAL FORM OF THE PLAT. THERE MAY BE ADDITIONAL RESTRICTIONS THAT ARE NOT RECORDED ON THIS PLAT THAT MAY BE FOUND IN THE PUBLIC RECORDS OF THIS COUNTY.

3 = SHEET NUMBER

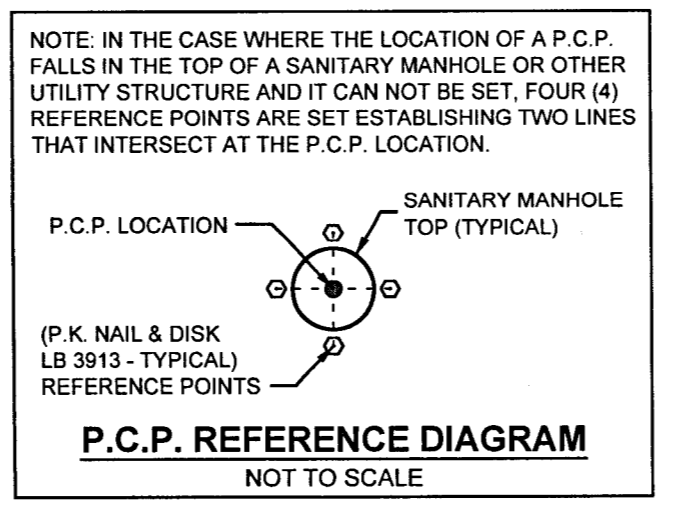
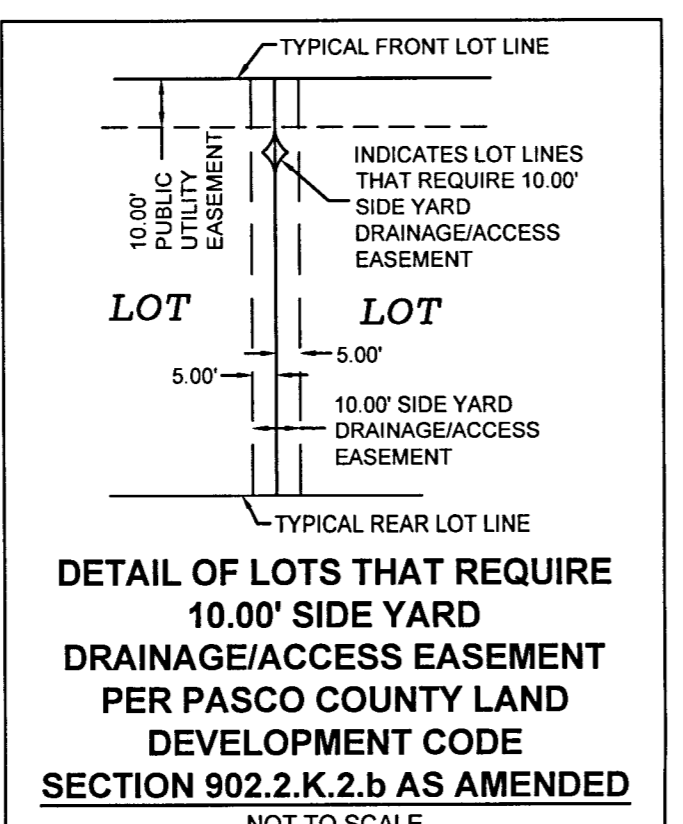
PALM WIND - PHASE 1

A SUBDIVISION OF A PORTION OF THE WEST 1/2 OF SECTION 33, TOWNSHIP 24 SOUTH, RANGE 17 EAST, PASCO COUNTY, FLORIDA

PLAT BOOK: 97 PAGE: 156



- LEGEND**
- FOUND 4" CONCRETE MONUMENT FROM LB 3913 (UNLESS OTHERWISE NOTED)
 - SET 4" CONCRETE MONUMENT FROM LB 3913
 - SET PK NAIL & DISK FROM LB 3913
 - FOUND PK NAIL & DISK FROM LB 3913
 - ⊙ PERMANENT CONTROL POINT SET LB 3913 PK NAIL & DISK
 - MATCH LINE
 - - - RADIAL BEARING TIE
 - WETLAND LINE
 - UTILITY EASEMENT
 - DRAINAGE EASEMENT
 - ▲/UE = ACCESS & UTILITY EASEMENT
 - CL = CENTERLINE
 - CCR = CERTIFIED CORNER RECORD
 - CST = CLEAR SIGHT TRIANGLE
 - D.E. = DRAINAGE EASEMENT
 - FCM = FOUND CONCRETE MONUMENT
 - FR = FOUND IRON ROD
 - HOA = HOMEOWNERS ASSOCIATION
 - LB = LICENSED BUSINESS
 - NAD83 = NORTH AMERICAN DATUM 1983
 - NO I.D. = NO IDENTIFICATION
 - NMFS = NO MONUMENT FOUND OR SET
 - N.T.S. = NOT TO SCALE
 - OR = OFFICIAL RECORDS
 - (NR) = NON-RADIAL
 - CIA = OVER ALL
 - RW = RIGHT-OF-WAY
 - (R) = RADIAL
 - POB = POINT OF BEGINNING
 - POC = POINT OF COMMENCEMENT
 - PPC = PERMANENT CONTROL POINT
 - PRM = PERMANENT REFERENCE MONUMENT
 - P.D.E. = PUBLIC DRAINAGE EASEMENT
 - P.D.E. = PRIVATE DRAINAGE EASEMENT
 - P.U.E. = PUBLIC UTILITY EASEMENT
 - SEC = SECTION
 - SWFWMD = SOUTHWEST FLORIDA WATER MANAGEMENT DISTRICT



CURVE #	Radius	Delta	Arc Length	Chord	Chord Bearing
C1	50.00	23°04'55"	20.14	20.01	S89°34'02"E
C2	25.00	137°01'34"	69.79	46.53	S21°29'13"W
C3	45.00	41°33'52"	32.64	31.93	N60°23'00"W
C4	15.00	99°45'45"	26.12	22.94	S89°28'57"E
C5	45.00	49°52'35"	29.18	37.95	S55°34'35"W
C6	35.00	46°53'19"	26.64	27.85	N65°02'18"W
C7	25.00	93°46'39"	40.52	38.59	S89°28'57"E
C8	35.00	46°53'19"	26.64	27.85	N65°04'23"W
C9	35.00	62°29'55"	38.18	36.31	S67°04'00"W
C10	15.00	124°59'51"	32.72	26.61	S89°28'57"E
C11	35.00	62°29'55"	38.18	36.31	S59°16'06"W
C12	15.00	22°57'20"	82.10	61.69	N78°00'17"W
C13	145.00	45°54'41"	116.19	113.11	S89°28'57"E
C14	155.00	22°57'20"	62.10	61.69	S79°02'23"W
C15	175.00	12°54'49"	38.57	38.39	N84°14'05"E
C16	1782.61	05°10'08"	160.82	160.76	N85°03'59"E
C18	425.00	25°53'52"	192.10	190.47	N74°12'12"E
C19	400.00	29°53'52"	180.60	179.27	N74°12'12"E
C20	375.00	28°53'52"	169.59	168.06	N74°12'12"E
C21	375.00	13°09'48"	86.15	85.96	N70°28'33"E

LINE #	Bearing	Distance
L1	S70°09'29"E	17.58
L2	S89°28'57"E	29.20
L3	S89°28'04"E	26.67
L4	S89°28'57"E	19.90
L5	S89°28'57"E	17.10
L6	S89°28'57"E	43.47

SEE SHEET 2 FOR GENERAL NOTES AND KEY MAP.

SEE SHEET 5 OF 10

SEE SHEET 4 OF 10

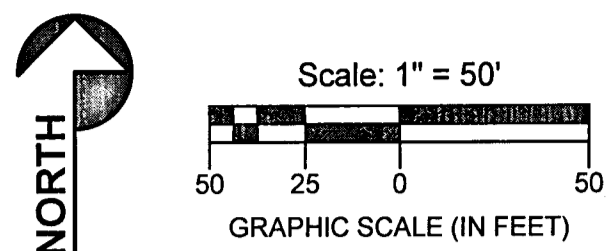


8515 Palm River Road (813) 621-7841
Tampa, Florida 33619 (813) 664-1832 (fax)
www.lesc.com L.B. # 3913

PALM WIND - PHASE 1

A SUBDIVISION OF A PORTION OF THE WEST 1/2 OF SECTION 33, TOWNSHIP 24 SOUTH, RANGE 17 EAST, PASCO COUNTY, FLORIDA

PLAT BOOK: 97 PAGE: 157

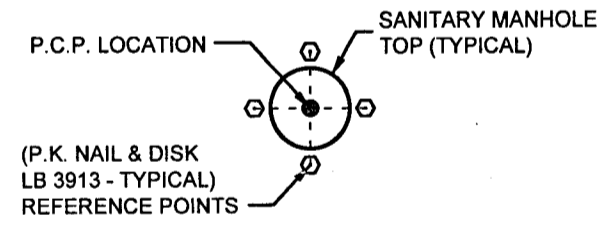


- LEGEND**
- FOUND 4"x4" CONCRETE MONUMENT PRM LB 3913 (UNLESS OTHERWISE NOTED)
 - SET 4"x4" CONCRETE MONUMENT PRM LB 3913
 - SET PK NAIL & DISK PRM LB 3913
 - FOUND PK NAIL & DISK PRM LB 3913
 - ⊙ PERMANENT CONTROL POINT SET LB 3913 PK NAIL & DISK
- POINT OF CURVATURE AND POINT OF TANGENCY ON CURVE
- MATCH LINE
 - RADIAL BEARING TIE
 - WETLAND LINE
 - UTILITY EASEMENT
 - DRAINAGE EASEMENT

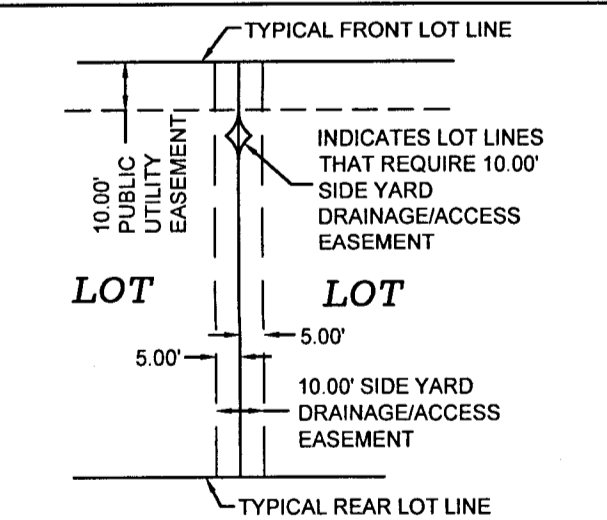
SEE SHEET 2 FOR GENERAL NOTES AND KEY MAP.

- ALUE = ACCESS & UTILITY EASEMENT
 CL = CENTERLINE
 CCR = CERTIFIED CORNER RECORD
 CST = CLEAR SIGHT TRIANGLE
 D.E. = DRAINAGE EASEMENT
 FCM = FOUND CONCRETE MONUMENT
 FR = FOUND IRON ROD
 HOA = HOMEOWNERS ASSOCIATION
 LB = LICENSED BUSINESS
 NAD83 = NORTH AMERICAN DATUM 1983
 NO.I.D. = NO IDENTIFICATION
 N.M.F.S. = NO MONUMENT FOUND OR SET
 N.T.S. = NOT TO SCALE
 O.R. = OFFICIAL RECORDS
 RW = RIGHT-OF-WAY
 R/A = RADIUS
 RW = RIGHT-OF-WAY
 R = RADIAL
 POB = POINT OF BEGINNING
 POC = POINT OF COMMENCEMENT
 PCP = PERMANENT CONTROL POINT
 PRM = PERMANENT REFERENCE MONUMENT
 P.D.E. = PUBLIC DRAINAGE EASEMENT
 PR.D.E. = PRIVATE DRAINAGE EASEMENT
 P.U.E. = PUBLIC UTILITY EASEMENT
 SEC = SECTION
 SWFWMD = SOUTHWEST FLORIDA WATER MANAGEMENT DISTRICT

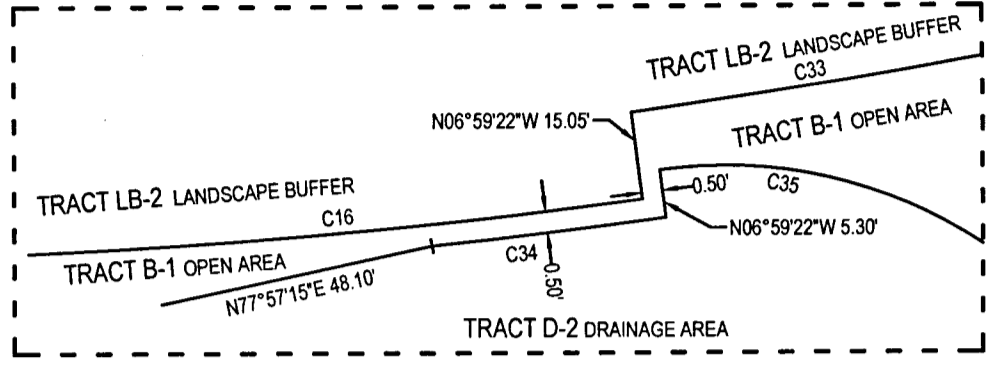
NOTE: IN THE CASE WHERE THE LOCATION OF A P.C.P. FALLS IN THE TOP OF A SANITARY MANHOLE OR OTHER UTILITY STRUCTURE AND IT CAN NOT BE SET, FOUR (4) REFERENCE POINTS ARE SET ESTABLISHING TWO LINES THAT INTERSECT AT THE P.C.P. LOCATION.



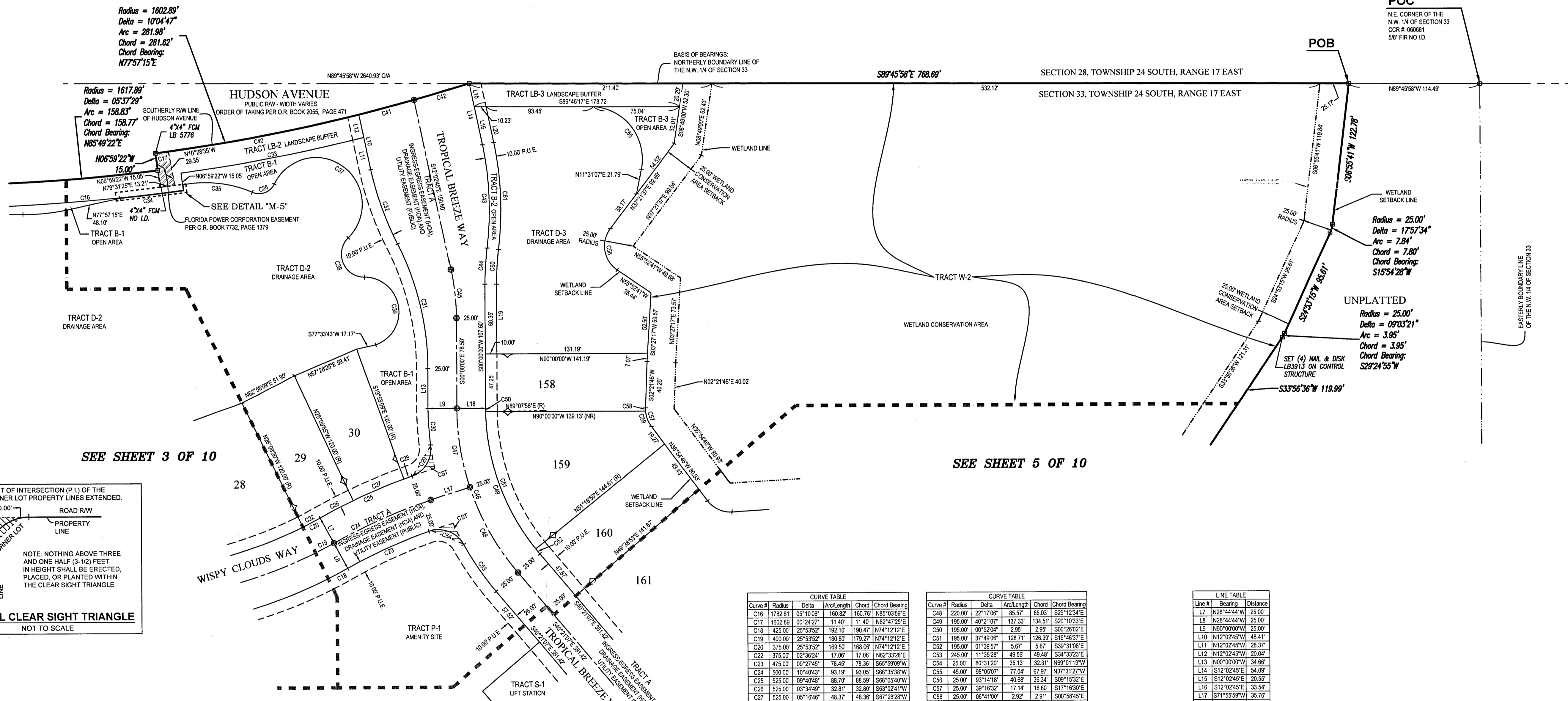
P.C.P. REFERENCE DIAGRAM NOT TO SCALE



DETAIL OF LOTS THAT REQUIRE 10.00' SIDE YARD DRAINAGE/ACCESS EASEMENT PER PASCO COUNTY LAND DEVELOPMENT CODE SECTION 902.2.K.2.b AS AMENDED NOT TO SCALE



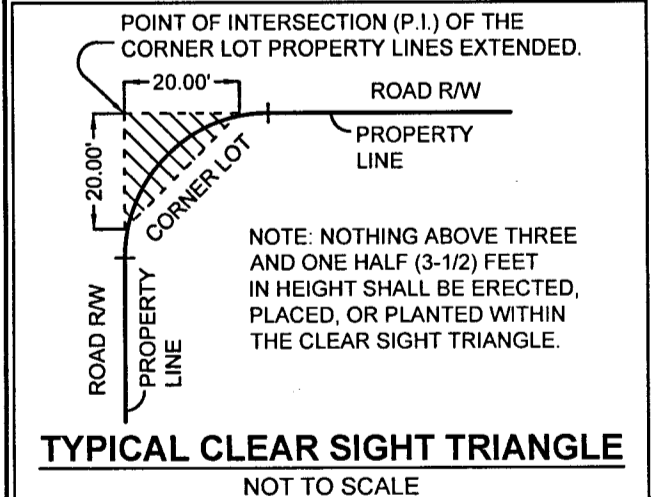
DETAIL "M-5" NOT TO SCALE



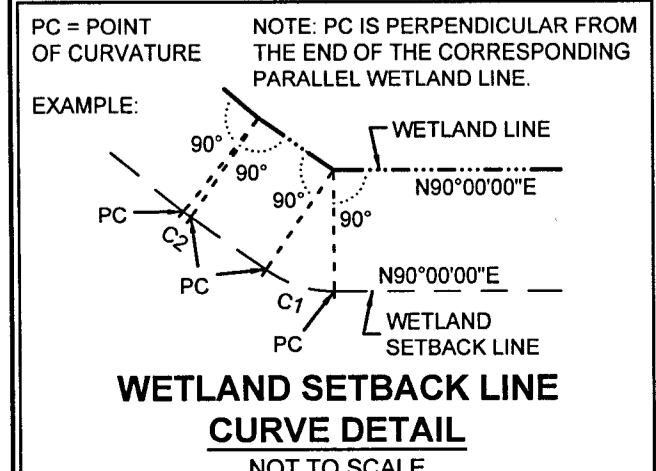
SEE SHEET 3 OF 10

SEE SHEET 5 OF 10

SEE SHEET 5 OF 10



TYPICAL CLEAR SIGHT TRIANGLE NOT TO SCALE



WETLAND SETBACK LINE CURVE DETAIL NOT TO SCALE

WETLAND NOTE:
 WETLAND CONSERVATION AREAS AS SHOWN HEREON MAY BE SUBJECT TO CERTAIN RESTRICTIONS FOUND IN PASCO COUNTY LAND DEVELOPMENT CODE, SOUTHWEST FLORIDA WATER MANAGEMENT DISTRICT (SWFWMD), ENVIRONMENTAL RESOURCE PERMIT, AND/OR THE UNITED STATES ARMY CORPS OF ENGINEERS (C.O.E.) PERMIT.

Curve #	Radius	Delta	Arc Length	Chord	Chord Bearing
C16	1782.61	05°10'08"	150.82	150.79	N85°03'54"E
C17	1602.89	00°24'27"	11.40	11.40	N82°47'25"E
C18	423.00	25°53'52"	192.10	190.47	N74°12'12"E
C19	423.00	25°53'52"	192.10	179.27	N74°12'12"E
C20	375.00	02°36'24"	17.06	17.06	N62°33'28"E
C21	375.00	02°36'24"	17.06	17.06	N62°33'28"E
C22	475.00	09°27'45"	78.45	78.36	S66°59'09"W
C23	500.00	10°40'43"	93.19	93.05	S66°59'39"W
C24	525.00	09°40'48"	88.79	88.59	S66°59'44"W
C25	525.00	03°34'48"	32.81	32.80	S03°02'41"W
C26	525.00	06°18'48"	48.37	48.36	S67°28'28"W
C27	525.00	09°49'13"	7.52	7.52	S70°31'28"W
C28	25.00	78°20'51"	34.19	31.58	N01°45'39"E
C29	245.00	07°24'47"	31.70	31.68	S89°42'23"E
C30	237.00	27°07'27"	112.20	111.15	N13°33'44"W
C31	263.00	15°04'42"	69.21	69.01	S19°35'06"E
C32	1612.41	05°48'45"	153.57	153.50	N19°24'37"E
C33	1782.61	01°48'36"	66.33	66.31	N83°21'51"E
C34	105.00	33°45'33"	61.87	60.98	N83°32'59"W
C35	15.00	87°15'22"	22.84	20.70	N69°42'07"E
C36	40.70	198°59'30"	142.08	80.17	N55°55'48"W
C37	20.00	138°20'27"	47.59	37.13	S22°06'17"E
C38	30.00	151°54'24"	64.77	59.25	N05°19'15"W
C39	1602.89	06°29'55"	181.81	181.71	N79°44'41"E
C40	1602.89	01°47'20"	50.04	50.04	N79°30'03"E
C41	1602.89	01°47'31"	50.13	50.13	N79°48'38"E
C42	253.00	10°58'39"	61.17	61.17	N82°13'25"W
C43	237.00	07°35'54"	31.43	31.41	S03°47'57"W
C44	200.00	12°02'45"	42.05	41.97	N06°01'22"W
C45	220.00	40°21'07"	154.94	151.78	S20°10'33"E
C46	220.00	18°04'01"	69.37	69.08	S09°02'02"E

Curve #	Radius	Delta	Arc Length	Chord	Chord Bearing
C47	220.00	22°17'06"	85.57	85.03	S29°12'34"E
C48	195.00	40°21'07"	137.39	134.51	S20°10'33"E
C49	185.00	00°52'04"	2.95	2.95	S00°29'02"E
C50	185.00	37°49'09"	128.71	128.39	S19°46'37"E
C51	158.00	01°39'57"	5.87	5.87	S39°31'08"E
C52	245.00	11°35'28"	49.58	49.48	S34°33'23"E
C53	25.00	80°31'20"	35.13	32.31	N69°01'19"W
C54	45.00	88°05'07"	77.04	67.97	N39°31'27"W
C55	25.00	03°11'15"	40.88	38.34	S09°15'32"E
C56	25.00	39°16'32"	17.14	16.80	S17°16'30"E
C57	25.00	06°41'00"	2.92	2.91	S00°58'45"E
C58	25.00	32°35'32"	14.22	14.03	S20°37'00"E
C59	227.00	07°35'54"	30.10	30.08	S03°47'57"W
C60	227.00	19°38'39"	93.60	93.14	N02°13'25"W

Line #	Bearing	Distance
L1	N28°44'44"W	25.00
L2	N28°44'44"W	25.00
L3	N28°44'44"W	25.00
L4	N28°44'44"W	25.00
L5	N12°02'45"W	48.41
L6	N12°02'45"W	28.37
L7	N12°02'45"W	20.04
L8	N00°00'00"W	34.66
L9	S12°02'45"E	54.09
L10	S12°02'45"E	20.59
L11	S12°02'45"E	33.54
L12	S12°02'45"E	35.76
L13	S12°02'45"E	35.76
L14	S12°02'45"E	25.00
L15	S12°02'45"E	25.00
L16	S12°02'45"E	25.00
L17	S12°02'45"E	25.00
L18	S12°02'45"E	25.00
L19	S12°02'45"E	25.00
L20	S12°02'45"E	25.00

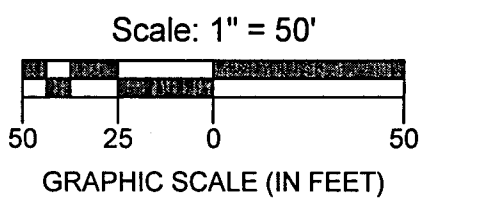


8515 Palm River Road | Tampa, Florida 33619
 (813) 621-7841 | (813) 664-1832 (fax)
 www.les.com | L.B. # 3913

PALM WIND - PHASE 1

A SUBDIVISION OF A PORTION OF THE WEST 1/2 OF SECTION 33, TOWNSHIP 24 SOUTH, RANGE 17 EAST, PASCO COUNTY, FLORIDA

PLAT BOOK: 97 PAGE: 158

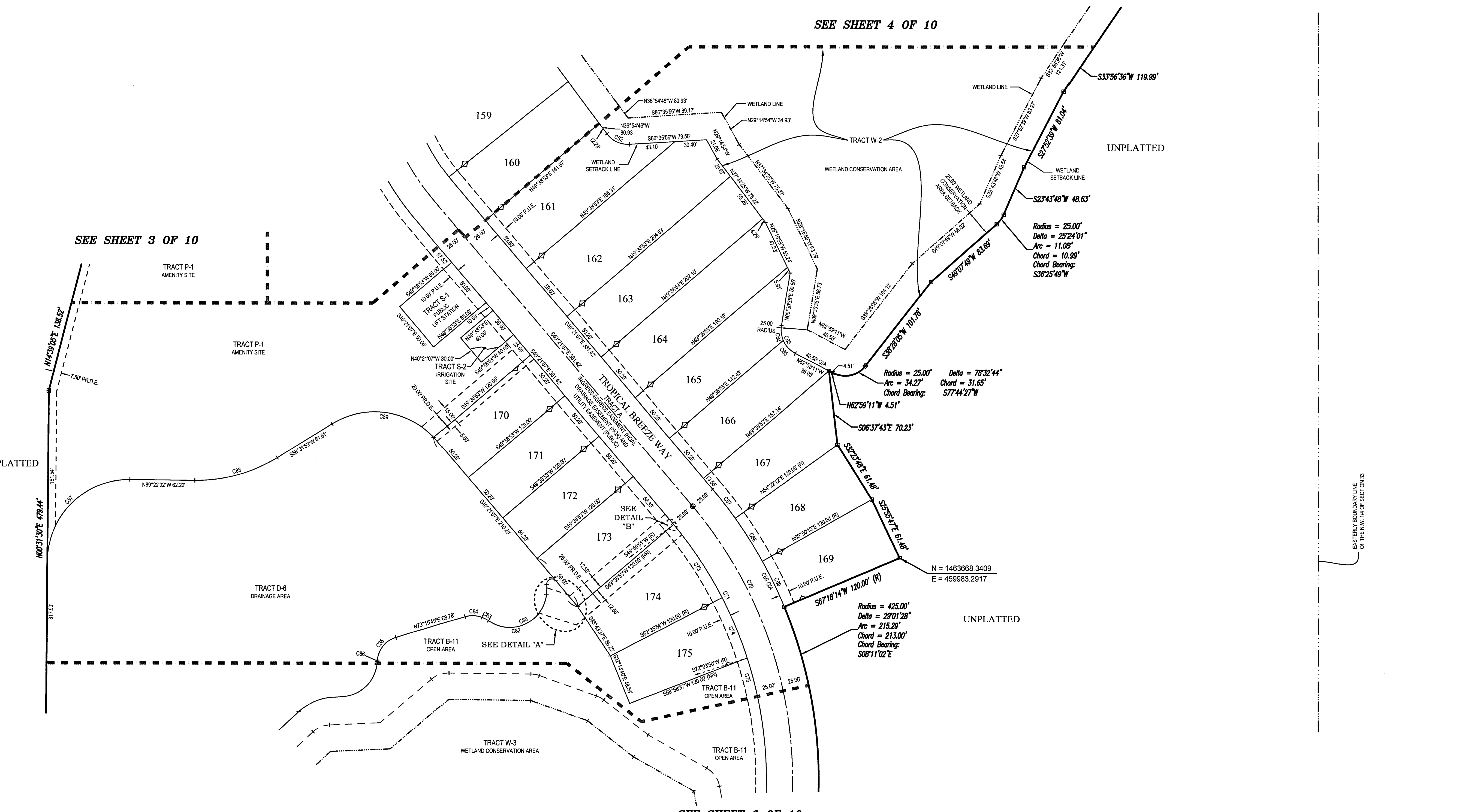
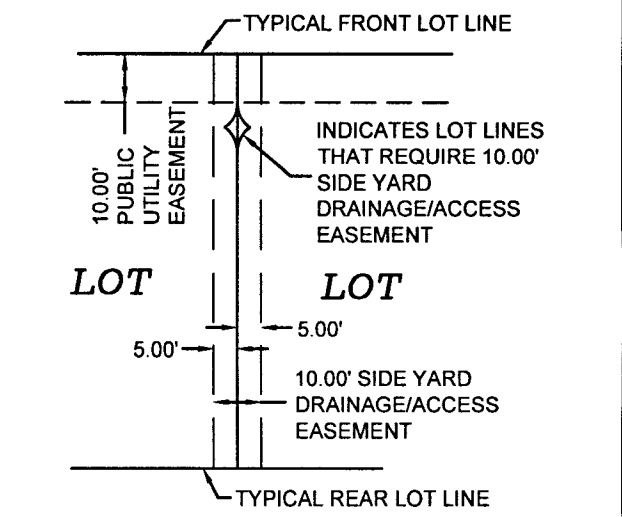
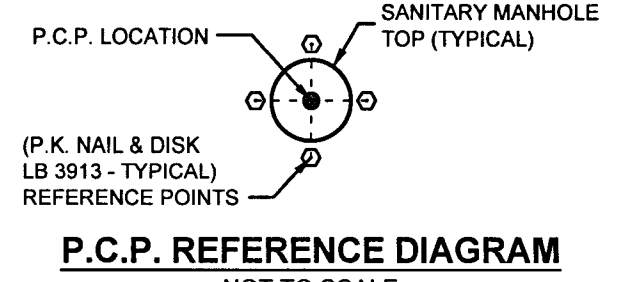


- LEGEND**
- FOUND 4" CONCRETE MONUMENT FROM LB 3913 (UNLESS OTHERWISE NOTED)
 - SET 4" CONCRETE MONUMENT FROM LB 3913
 - SET PK NAIL & DISK FROM LB 3913
 - FOUND PK NAIL & DISK FROM LB 3913
 - ⊙ FOUND CONTROL POINT SET LB 3913 PK NAIL & DISK
 - ⤵ POINT OF CURVATURE AND POINT OF TANGENCY ON CURVE
 - MATCH LINE
 - RADIAL BEARING
 - RATIONAL BEARING TIE
 - WETLAND LINE
 - UTILITY EASEMENT
 - DRAINAGE EASEMENT

SEE SHEET 2 FOR GENERAL NOTES AND KEY MAP.

- AAUE = ACCESS & UTILITY EASEMENT
- CL = CENTERLINE
- CCR = CERTIFIED CORNER RECORD
- CST = CLEAR SIGHT TRIANGLE
- D.E. = DRAINAGE EASEMENT
- F.C.M. = FOUND CONCRETE MONUMENT
- F.I.R. = FOUND IRON ROD
- H.O.A. = HOMEOWNERS ASSOCIATION
- L.B. = LICENSED BUSINESS
- NAD83 = NORTH AMERICAN DATUM 1983
- NO I.D. = NO IDENTIFICATION
- N.M.S. = NO MONUMENT FOUND OR SET
- N.T.S. = NOT TO SCALE
- O.R. = OFFICIAL RECORDS
- NR1 = NON-RADIAL
- O.A. = OVER ALL
- R.W. = RIGHT-OF-WAY
- (R) = RADIAL
- P.O.B. = POINT OF BEGINNING
- P.O.C. = POINT OF COMMENCEMENT
- P.C.P. = PERMANENT CONTROL POINT
- PRM = PERMANENT REFERENCE MONUMENT
- P.D.E. = PUBLIC DRAINAGE EASEMENT
- P.U.E. = PUBLIC UTILITY EASEMENT
- SEC = SECTION
- SWFMD = SOUTHWEST FLORIDA WATER MANAGEMENT DISTRICT

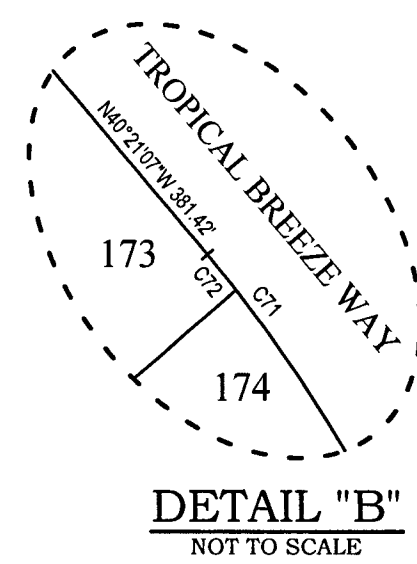
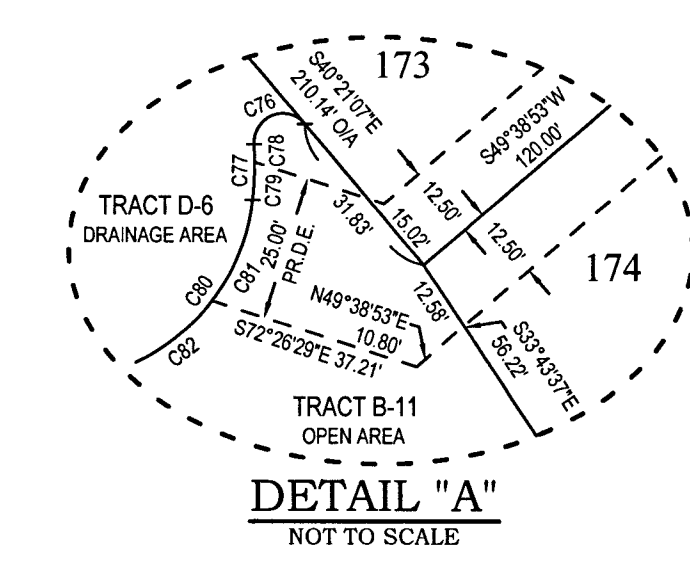
NOTE: IN THE CASE WHERE THE LOCATION OF A P.C.P. FALLS IN THE TOP OF A SANITARY MANHOLE OR OTHER UTILITY STRUCTURE AND IT CAN NOT BE SET (FOUR (4) REFERENCE POINTS ARE SET ESTABLISHING TWO LINES THAT INTERSECT AT THE P.C.P. LOCATION)



SEE SHEET 3 OF 10

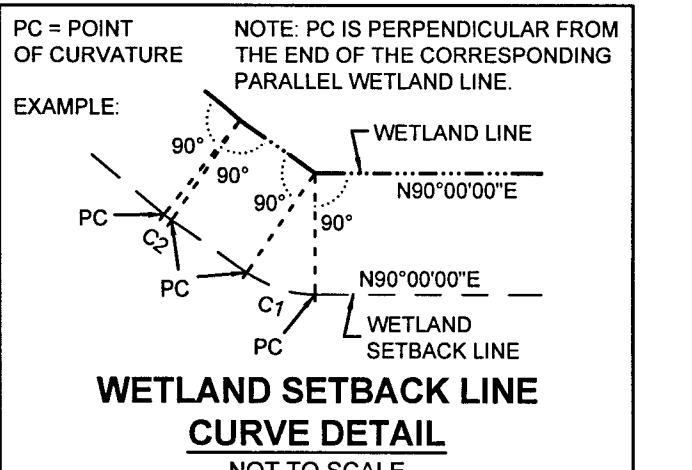
SEE SHEET 4 OF 10

SEE SHEET 6 OF 10



Curve #	Radius	Delta	Arc Length	Chord	Chord Bearing
C62	25.00	56°29'18"	24.65	23.66	S65°09'25"E
C63	25.00	72°24'41"	31.63	29.65	S35°44'15"E
C64	25.00	32°52'47"	14.35	14.15	S09°55'48"E
C65	25.00	39°37'00"	17.29	16.94	S43°10'42"E
C66	425.00	52°41'57"	380.90	377.27	N14°00'08"W
C67	425.00	04°43'10"	36.03	35.02	N37°59'28"W
C68	425.00	06°02'01"	47.97	47.94	N52°44'49"W
C69	425.00	06°28'01"	47.97	47.94	N25°55'47"W
C70	400.00	52°41'57"	367.61	355.08	N14°00'08"W
C71	375.00	52°41'57"	344.92	332.89	N14°00'08"W
C72	375.00	09°11'57"	1.37	1.36	N00°13'08"W
C73	375.00	12°49'03"	83.45	83.28	N33°46'38"W
C74	375.00	09°27'57"	61.65	61.88	N22°40'08"W
C75	375.00	30°17'00"	198.20	195.91	N32°47'40"W
C76	5.00	143°07'48"	12.49	9.49	S58°04'59"W
C77	55.00	03°58'12"	9.54	9.53	N01°22'11"E
C78	55.00	06°43'52"	6.46	6.45	N03°05'20"E
C80	35.00	118°28'12"	72.37	60.15	N63°47'22"E
C81	35.00	31°02'57"	19.04	18.60	N22°02'16"E
C82	35.00	87°19'13"	53.33	48.32	N81°16'22"E
C83	28.00	14°21'10"	7.01	7.00	N82°15'07"W
C84	25.00	37°18'28"	16.28	15.99	N58°04'56"W
C85	25.00	67°32'33"	29.47	27.79	S39°29'33"W
C86	28.00	02°47'22"	1.36	1.36	S04°19'33"W
C87	78.00	90°06'39"	122.67	110.42	S45°34'38"W
C88	148.00	32°06'04"	82.62	81.84	N74°34'56"E
C89	78.26	77°41'51"	106.13	98.18	N82°33'23"W

WETLAND NOTE:
WETLAND CONSERVATION AREAS AS SHOWN HEREON MAY BE SUBJECT TO CERTAIN RESTRICTIONS FOUND IN PASCO COUNTY LAND DEVELOPMENT CODE, SOUTHWEST FLORIDA WATER MANAGEMENT DISTRICT (SWFMD) ENVIRONMENTAL RESOURCE PERMIT, AND/OR THE UNITED STATES ARMY CORPS OF ENGINEERS (C.O.E.) PERMIT.



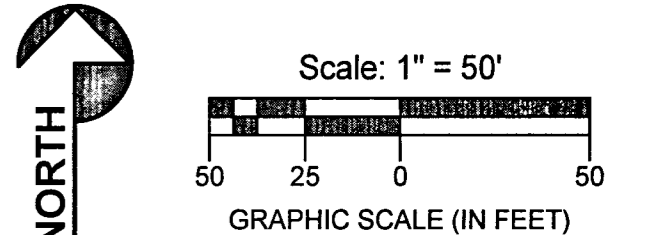
LANDMARK
Engineering & Surveying Corporation

8515 Palm River Road | Tampa, Florida 33619
(813) 621-7841 | (813) 664-1832 (fax)
www.les.com | LB. # 3913

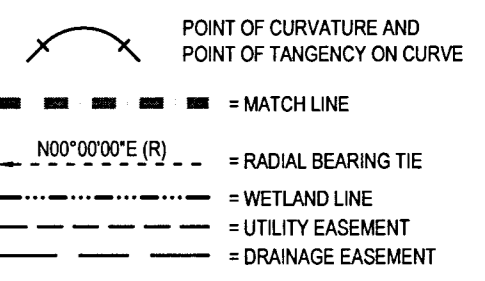
PALM WIND - PHASE 1

A SUBDIVISION OF A PORTION OF THE WEST 1/2 OF SECTION 33, TOWNSHIP 24 SOUTH, RANGE 17 EAST, PASCO COUNTY, FLORIDA

PLAT BOOK: 97 PAGE: 159

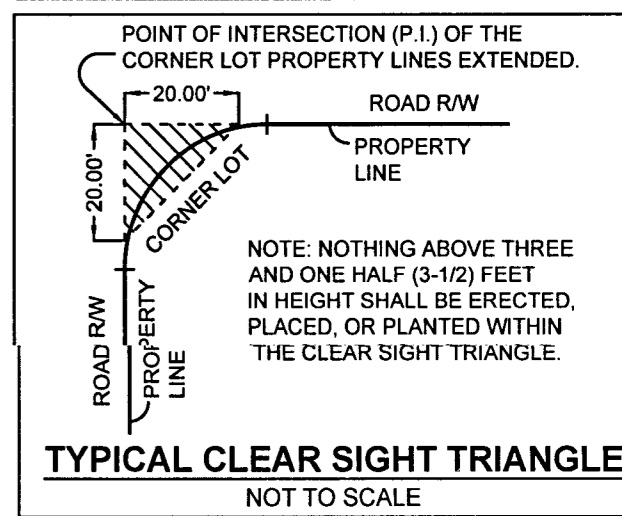
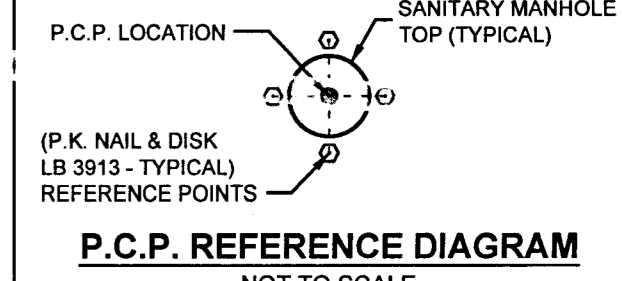


- LEGEND**
- FOUND 4"x4" CONCRETE MONUMENT PRM LB 3913 (UNLESS OTHERWISE NOTED)
 - SET 4"x4" CONCRETE MONUMENT PRM LB 3913
 - SET PK NAIL & DISK PRM LB 3913
 - FOUND PK NAIL & DISK PRM LB 3913
 - ⊙ PERMANENT CONTROL POINT SET LB 3913 PK NAIL & DISK



- SEE SHEET 2 FOR GENERAL NOTES AND KEY MAP.**
- ABUE = ACCESS & UTILITY EASEMENT
 - CL = CENTERLINE
 - CCR = CERTIFIED CORNER RECORD
 - CST = CLEAR SIGHT TRIANGLE
 - D/E = DRAINAGE EASEMENT
 - FCM = FOUND CONCRETE MONUMENT
 - FR = FOUND IRON ROD
 - HOA = HOMEOWNERS ASSOCIATION
 - LB = LICENSED BUSINESS
 - NAD83 = NORTH AMERICAN DATUM 1983
 - NO ID = NO IDENTIFICATION
 - NMFS = NO MONUMENT FOUND OR SET
 - N.T.S. = NOT TO SCALE
 - O.R. = OFFICIAL RECORDS
 - (NR) = NON-RADIAL
 - OA = OVER ALL
 - R/W = RIGHT-OF-WAY
 - (R) = RADIAL
 - POB = POINT OF BEGINNING
 - POC = POINT OF COMMENCEMENT
 - PCP = PERMANENT CONTROL POINT
 - PRM = PERMANENT REFERENCE MONUMENT
 - P.D.E. = PUBLIC DRAINAGE EASEMENT
 - PR.D.E. = PRIVATE DRAINAGE EASEMENT
 - P.U.E. = PUBLIC UTILITY EASEMENT
 - SEC = SECTION
 - SWFWMD = SOUTHWEST FLORIDA WATER MANAGEMENT DISTRICT

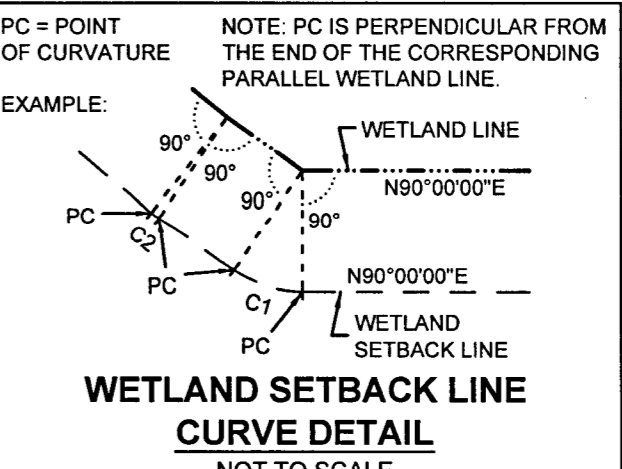
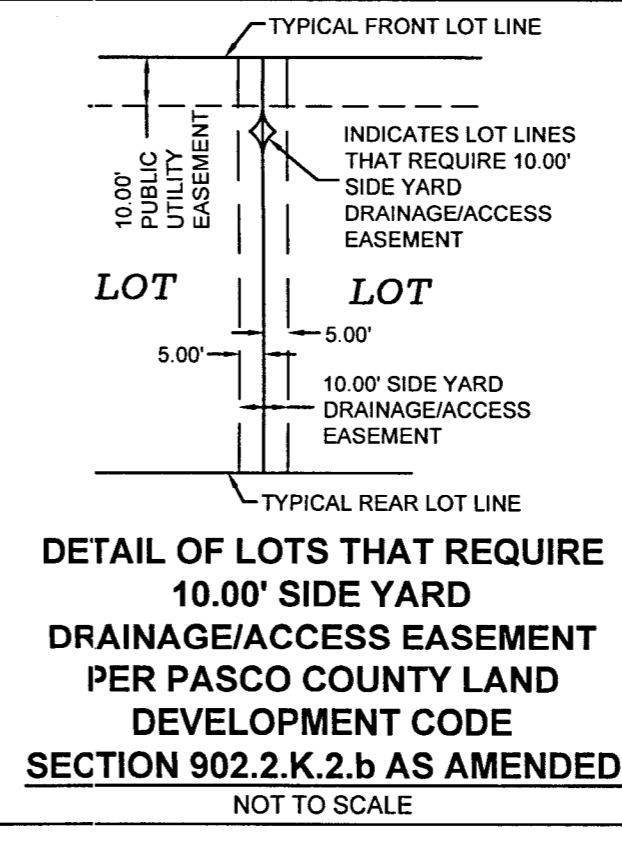
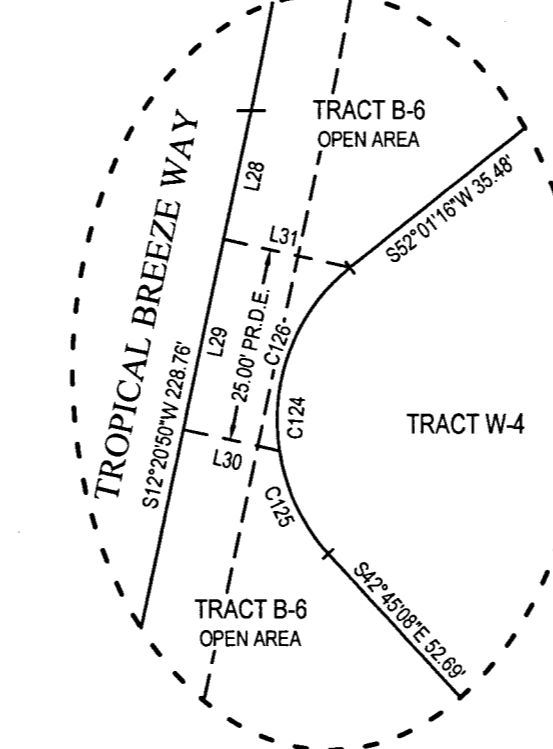
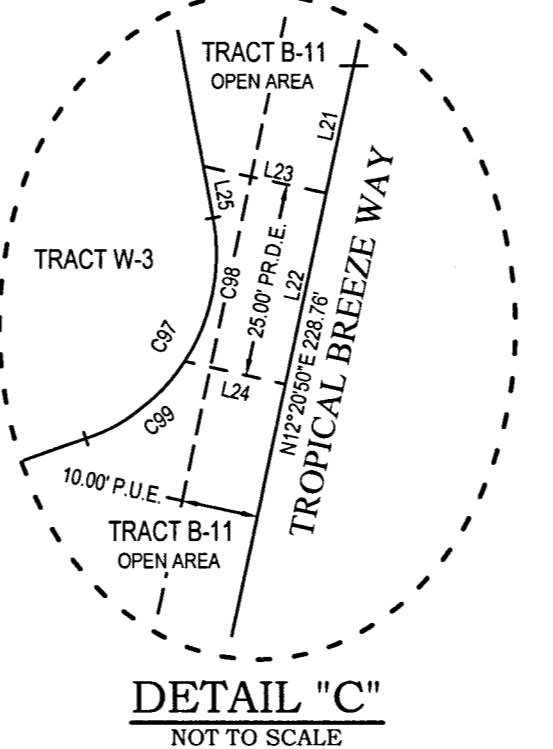
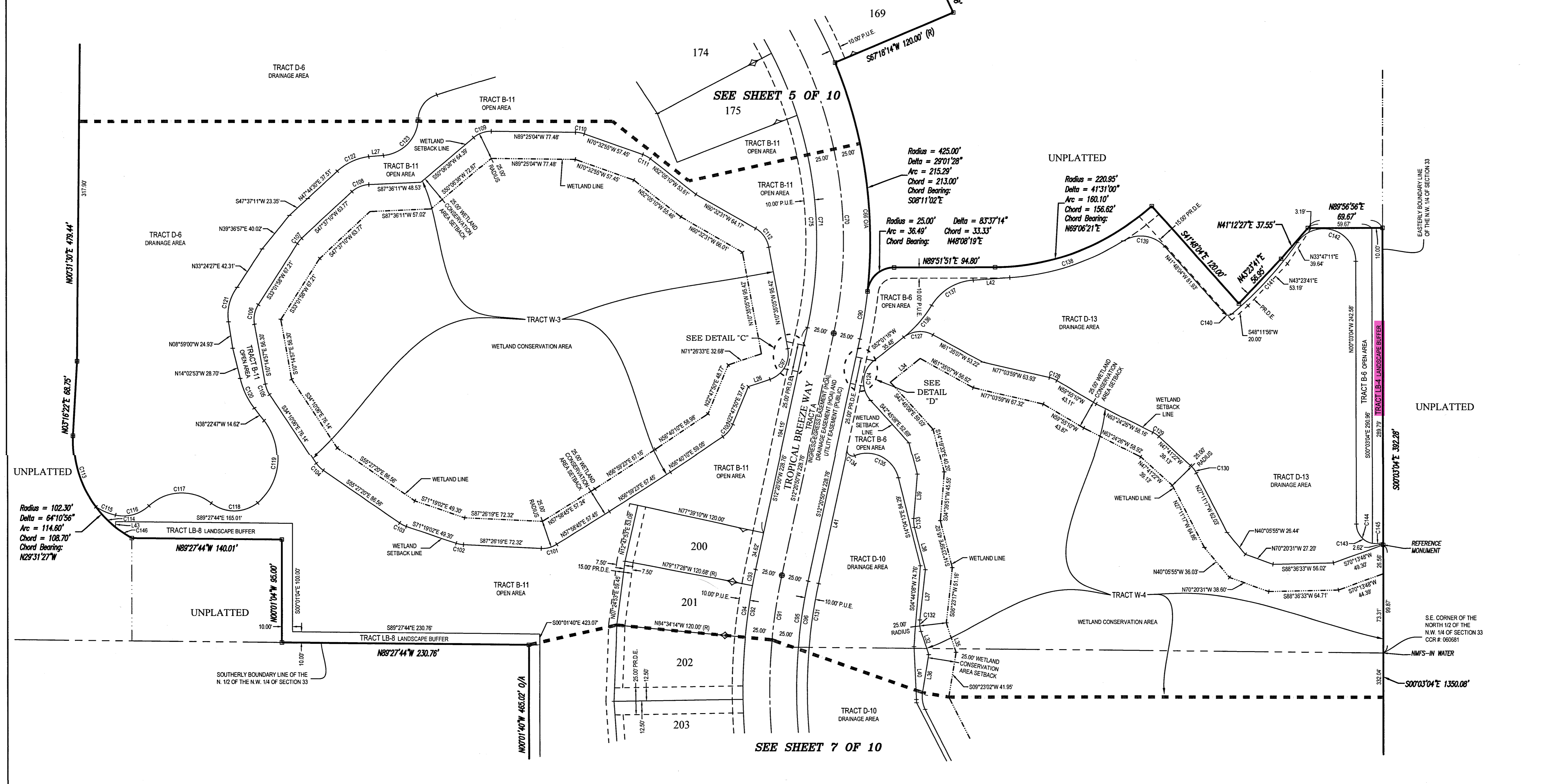
NOTE: IN THE CASE WHERE THE LOCATION OF A P.C.P. FALLS IN THE TOP OF A SANITARY MANHOLE OR OTHER UTILITY STRUCTURE AND IT CAN NOT BE SET, FOUR (4) REFERENCE POINTS ARE SET ESTABLISHING TWO LINES THAT INTERSECT AT THE P.C.P. LOCATION.



WETLAND NOTE:
WETLAND CONSERVATION AREAS AS SHOWN HEREON MAY BE SUBJECT TO CERTAIN RESTRICTIONS FOUND IN PASCO COUNTY LAND DEVELOPMENT CODE, SOUTHWEST FLORIDA WATER MANAGEMENT DISTRICT (SWFWMD) ENVIRONMENTAL RESOURCE PERMIT, AND/OR THE UNITED STATES ARMY CORPS OF ENGINEERS (C.O.E.) PERMIT.

LANDMARK
Engineering & Surveying Corporation

8515 Palm River Road | Tampa, Florida 33619
(813) 621-7841 | (813) 664-1832 (fax)
www.lmesc.com | L.B. # 3913



Curve #	Radius	Delta	Arc Length	Chord	Chord Bearing
C56	425.00	52°41'57"	390.80	377.27	N14°00'08"W
C70	400.00	52°41'57"	367.91	355.08	N14°00'08"W
C71	375.00	52°41'57"	344.92	332.89	N14°00'08"W
C75	375.00	30°12'00"	168.20	156.91	N02°47'40"W
C90	425.00	66°01'00"	44.65	44.63	N05°20'19"E
C91	500.00	66°01'00"	576.12	544.77	S20°39'42"E
C92	525.00	66°01'00"	604.92	572.01	S20°39'42"E
C93	525.00	01°38'18"	15.07	15.01	S11°31'41"W
C94	525.00	01°38'18"	48.37	48.39	S08°04'00"W
C95	475.00	66°01'00"	547.31	517.53	S20°39'42"E
C96	475.00	41°33'32"	344.54	337.03	S08°25'55"E
C97	25.00	82°01'38"	35.70	32.81	N30°29'44"E
C98	25.00	44°07'49"	19.28	18.78	N11°29'49"E
C99	25.00	37°53'51"	18.54	18.24	N52°29'23"E
C100	25.00	33°52'20"	14.78	14.57	N39°44'00"E
C101	25.00	34°34'57"	18.09	14.86	N75°16'13"E
C102	25.00	16°07'16"	7.02	7.01	S79°22'49"E
C103	25.00	16°59'42"	8.92	8.90	S83°23'11"E
C104	25.00	21°17'14"	9.29	9.23	S44°48'43"E
C105	25.00	23°58'10"	10.44	10.36	S22°12'31"E
C106	25.00	43°16'54"	18.89	18.44	S11°23'30"W
C107	25.00	14°30'13"	6.38	6.35	S40°19'34"W
C108	25.00	38°59'00"	17.66	17.29	S87°36'41"W
C109	25.00	40°28'18"	17.86	17.29	S70°20'47"W
C110	25.00	18°52'09"	8.23	8.20	N79°59'00"W
C111	25.00	18°27'46"	8.06	8.02	N81°19'02"W
C112	25.00	48°57'29"	21.87	21.11	N35°33'44"W
C113	102.30	39°17'45"	70.16	68.80	S17°04'52"E
C114	102.30	14°48'20"	26.44	26.36	S44°07'54"E
C115	55.04	20°40'09"	19.86	19.73	S87°30'35"E
C116	33.00	54°56'28"	33.59	32.28	N74°41'19"E
C117	43.00	80°32'12"	63.22	58.17	S87°29'40"W
C118	35.00	78°28'48"	46.70	43.31	N89°32'22"E
C119	54.88	87°43'04"	84.01	76.05	N05°25'20"E
C120	68.25	28°47'59"	30.72	30.47	S25°28'49"E
C121	41.59	48°43'28"	33.72	32.80	S14°22'42"W

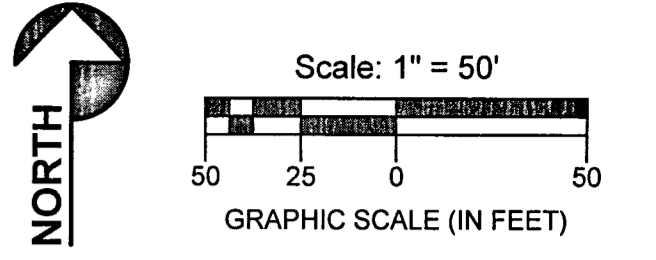
Curve #	Radius	Delta	Arc Length	Chord	Chord Bearing
C122	53.31	35°20'31"	32.88	32.37	S65°24'45"W
C123	35.00	82°38'15"	50.48	46.22	N44°15'02"E
C124	25.00	84°46'24"	41.35	36.80	S64°38'04"W
C125	25.00	33°54'08"	14.78	14.58	S53°48'04"E
C126	25.00	66°52'17"	26.56	25.33	S21°35'08"W
C127	25.00	66°23'31"	28.97	27.38	S85°13'05"W
C128	25.00	17°08'48"	7.48	7.45	N68°29'35"W
C129	25.00	15°43'05"	6.86	6.84	N55°32'34"W
C130	25.00	20°30'05"	8.95	8.90	N37°51'19"W
C131	465.00	41°33'32"	337.28	294.94	S08°25'55"E
C132	25.00	24°40'54"	10.77	10.69	S05°57'10"E
C133	25.00	19°03'56"	8.32	8.29	S04°52'04"E
C134	5.00	124°51'00"	10.90	1.89	S50°49'29"E
C135	30.00	98°25'56"	51.54	45.43	N63°17'11"W
C136	121.05	18°44'25"	39.59	38.42	N41°30'54"E
C137	50.00	54°09'11"	47.21	45.48	S69°11'47"W
C138	230.44	28°04'17"	112.90	111.78	N72°26'05"E
C139	30.00	79°47'56"	41.78	32.49	N61°42'04"W
C140	5.00	88°08'06"	7.69	6.95	S85°20'07"E
C141	343.00	14°58'11"	69.62	69.36	N42°34'44"E
C142	30.00	144°51'17"	75.85	87.20	N72°28'42"W
C143	18.00	112°53'07"	35.46	30.00	S56°29'38"E
C144	18.00	80°24'21"	25.26	23.24	S40°19'15"E
C145	18.00	32°28'45"	10.20	10.07	N83°18'12"E
C146	102.30	10°04'51"	18.00	17.88	S86°34'30"E

Line #	Bearing	Distance
L21	S12°20'50"W	16.89
L22	S12°20'50"W	26.00
L23	S77°39'10"E	16.38
L24	S77°39'10"E	13.47
L25	N10°30'00"W	6.75
L26	N11°28'32"E	21.38
L27	N85°34'09"E	13.75
L28	S12°20'50"W	16.89
L29	S12°20'50"W	25.00
L30	S77°39'10"E	12.92
L31	S77°39'10"E	16.89
L32	S18°17'37"E	22.44
L33	S14°19'10"E	29.68
L34	S52°01'16"W	35.46
L35	S18°17'37"E	28.07
L36	S08°23'02"W	35.79
L37	S08°23'02"W	46.98
L38	S14°19'10"E	40.43
L39	S04°39'51"W	41.37
L40	S02°39'34"E	48.88
L41	N12°28'50"E	127.00
L42	S86°14'52"W	34.47
L43	N00°10'04"W	5.24

PALM WIND - PHASE 1

A SUBDIVISION OF A PORTION OF THE WEST 1/2 OF SECTION 33, TOWNSHIP 24 SOUTH, RANGE 17 EAST, PASCO COUNTY, FLORIDA

PLAT BOOK: 97 PAGE: 160



- LEGEND**
- FOUND 4"x4" CONCRETE MONUMENT
PRM LB 3913
(UNLESS OTHERWISE NOTED)
 - SET 4"x4" CONCRETE MONUMENT
PRM LB 3913
 - SET PK NAIL & DISK
PRM LB 3913
 - FOUND PK NAIL & DISK
PRM LB 3913
 - ⊙ PERMANENT CONTROL POINT
SET LB 3913 PK NAIL & DISK

- POINT OF CURVATURE AND POINT OF TANGENCY ON CURVE
- MATCH LINE
- RADIAL BEARING TIE
- WETLAND LINE
- UTILITY EASEMENT
- DRAINAGE EASEMENT

SEE SHEET 2 FOR GENERAL NOTES AND KEY MAP.

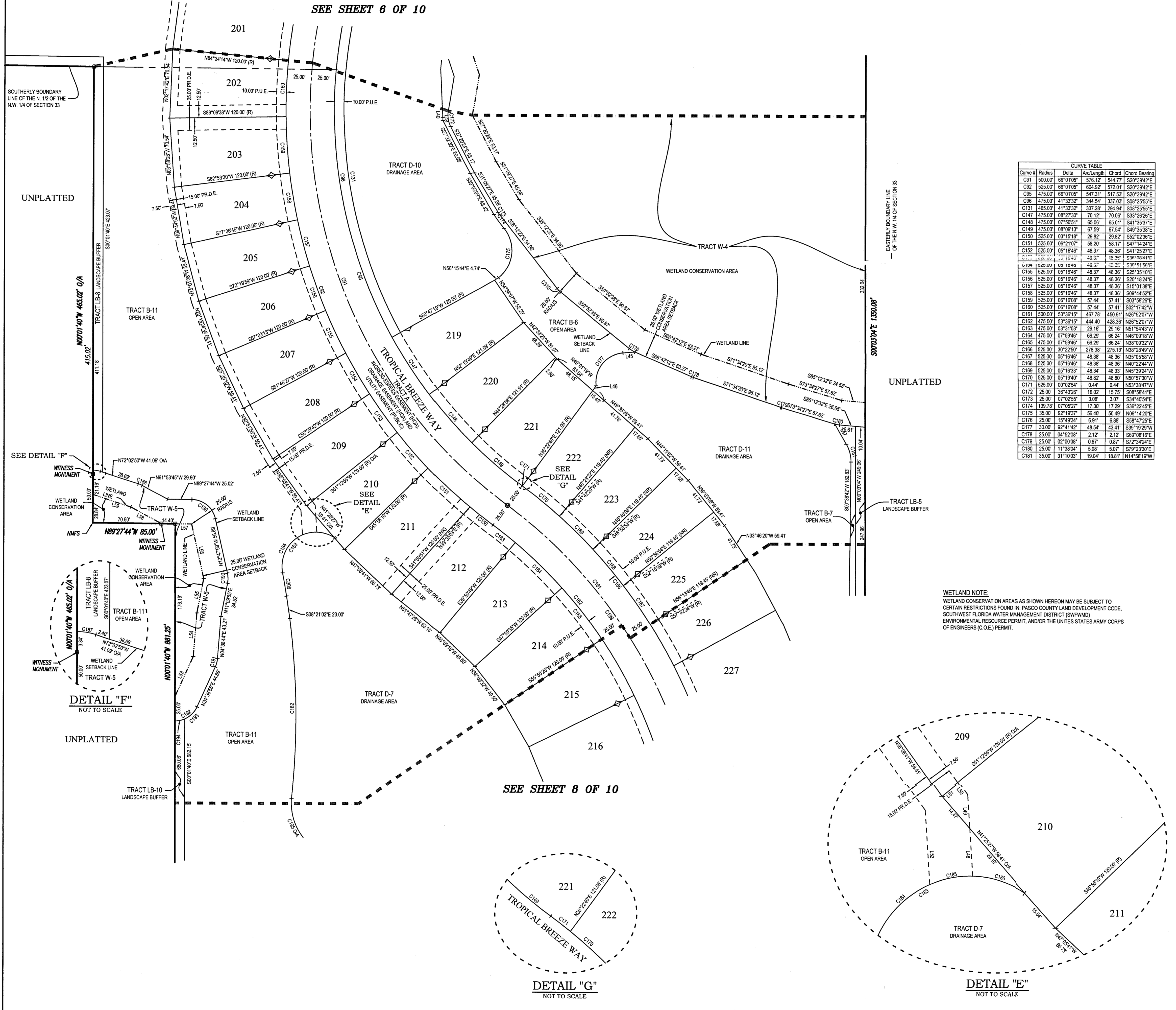
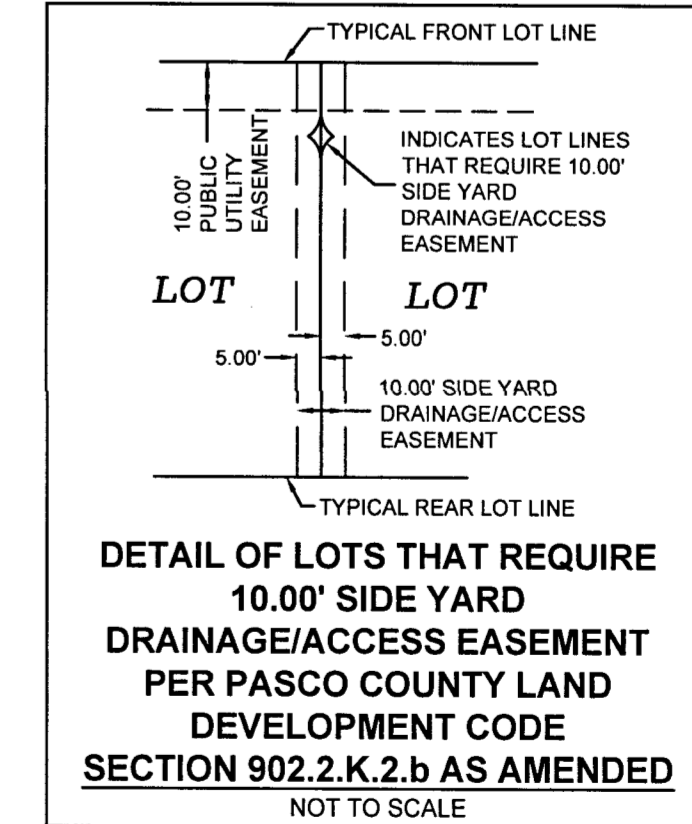
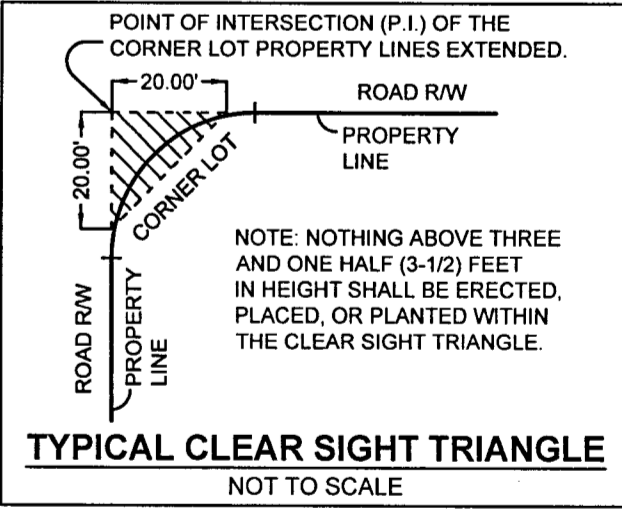
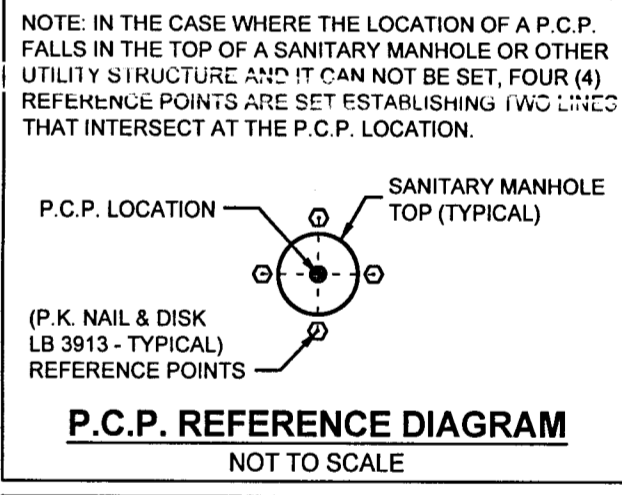
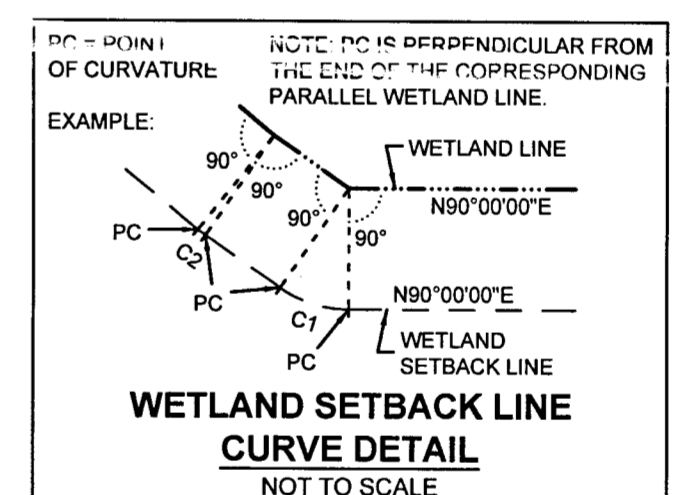
- AAUE = ACCESS & UTILITY EASEMENT
- CA = CENTERLINE
- CCR = CERTIFIED CORNER RECORD
- CST = CLEAR SIGHT TRIANGLE
- DE = DRAINAGE EASEMENT
- FCM = FOUND CONCRETE MONUMENT
- FR = FOUND IRON ROD
- HOA = HOMEOWNERS ASSOCIATION
- LB = LICENSED BUSINESS
- NAD83 = NORTH AMERICAN DATUM 1983
- NO I.D. = NO IDENTIFICATION
- NMFS = NO MONUMENT FOUND OR SET
- NTS = NOT TO SCALE
- O.B. = OFFICIAL RECORD
- (NR) = NON-RADIAL
- OA = OVER ALL
- RM = RIGHT-OF-WAY
- (R) = RADIAL
- POB = POINT OF BEGINNING
- POC = POINT OF COMMENCEMENT
- POB = POINT OF BEGINNING
- PRM = PERMANENT REFERENCE MONUMENT
- P.E. = PUBLIC DRAINAGE EASEMENT
- P.D.E. = PRIVATE DRAINAGE EASEMENT
- P.U.E. = PUBLIC UTILITY EASEMENT
- SEC = SECTION
- SWFWMD = SOUTHWEST FLORIDA WATER MANAGEMENT DISTRICT

Curve #	Radius	Delta	Chord Length	Chord Bearing
C91	500.00	66°10'05"	576.12	S44.77°S20°39'42"E
C92	525.00	66°10'05"	604.92	S20°39'42"E
C93	475.00	66°10'05"	547.31	S20°39'42"E
C94	475.00	41°33'32"	344.54	S30°23'55"E
C95	475.00	41°33'32"	337.28	S20°23'55"E
C96	475.00	08°27'30"	70.12	S33°26'20"E
C97	475.00	07°52'51"	65.00	S41°39'37"E
C98	475.00	08°59'13"	67.59	S49°39'36"E
C99	525.00	03°15'18"	29.92	S82°02'30"E
C100	525.00	05°12'03"	58.29	S47°14'24"E
C101	525.00	05°18'46"	48.37	S41°25'27"E
C102	525.00	05°18'46"	48.37	S20°18'24"E
C103	525.00	05°18'46"	48.37	S20°18'24"E
C104	525.00	05°18'46"	48.37	S20°18'24"E
C105	525.00	05°18'46"	48.37	S20°18'24"E
C106	525.00	05°18'46"	48.37	S20°18'24"E
C107	525.00	05°18'46"	48.37	S20°18'24"E
C108	525.00	05°18'46"	48.37	S20°18'24"E
C109	525.00	05°18'46"	48.37	S20°18'24"E
C110	525.00	05°18'46"	48.37	S20°18'24"E
C111	500.00	53°36'15"	467.78	N26°52'07"W
C112	475.00	53°36'15"	444.49	N26°52'07"W
C113	475.00	03°10'37"	29.16	N51°54'43"W
C114	475.00	07°59'46"	66.29	N46°09'18"W
C115	475.00	07°59'46"	66.29	N38°09'32"W
C116	525.00	30°22'52"	278.38	N38°28'49"W
C117	525.00	05°19'40"	48.38	N35°03'38"W
C118	525.00	05°19'40"	48.38	N45°39'24"W
C119	525.00	05°19'40"	48.38	N45°39'24"W
C120	525.00	05°19'40"	48.38	N45°39'24"W
C121	525.00	05°19'40"	48.38	N45°39'24"W
C122	25.00	38°43'28"	16.02	S34°42'25"E
C123	25.00	07°02'26"	3.08	S34°40'54"E
C124	139.78	07°02'27"	17.30	S36°22'45"E
C125	35.00	02°19'37"	36.40	N06°14'20"E
C126	25.00	15°49'34"	9.91	S34°42'25"E
C127	30.00	02°41'42"	48.54	S30°19'29"W
C128	25.00	04°52'08"	2.12	S69°08'16"E
C129	25.00	02°00'08"	0.87	S72°34'24"E
C130	25.00	11°38'04"	5.38	S79°23'30"E
C131	35.00	31°10'03"	19.04	N14°58'19"W

Curve #	Radius	Delta	Chord Length	Chord Bearing
C132	774.26	13°37'46"	184.18	N83.75°N00°41'05"W
C133	35.00	134°09'13"	81.95	S56°06'08"W
C134	35.00	77°33'04"	47.37	S27°48'04"W
C135	35.00	24°57'07"	15.24	S39°03'08"W
C136	25.00	23°57'24"	10.46	N00°49'02"W
C137	25.00	17°58'50"	7.85	N81°02'15"W
C138	25.00	10°09'50"	4.43	N65°58'18"W
C139	25.00	76°39'45"	33.45	N81°07'32"W
C140	25.00	23°57'24"	10.46	N00°49'02"W
C141	25.00	19°58'10"	8.71	N14°37'50"E
C142	25.00	65°21'26"	28.52	N51°17'38"E
C143	25.00	41°44'44"	18.79	N45°29'17"E
C144	25.00	23°34'41"	10.29	N39°03'08"W
C145	55.00	79°57'50"	76.76	S34°49'03"E
C146	500.00	35°34'59"	310.52	N35°52'45"W
C147	774.26	01°46'23"	23.96	N10°05'17"W
C148	25.00	12°40'16"	5.53	S44°32'30"E

Line #	Bearing	Distance
L40	S02°39'34"E	48.96
L41	S05°42'21"W	12.95
L42	S02°39'34"E	3.02
L43	S05°42'21"W	12.95
L44	N05°22'40"E	5.88
L45	S03°32'12"E	23.48
L46	S03°40'12"E	16.16
L47	S03°40'12"E	11.49
L48	N08°08'41"W	44.63
L49	N05°12'26"E	7.51
L50	N05°12'26"E	25.20
L51	N04°36'55"E	44.89
L52	N04°36'55"E	44.89
L53	N04°36'55"E	44.89
L54	N04°36'55"E	44.89
L55	N11°09'52"E	35.95
L56	N12°47'59"W	58.89
L57	N08°27'44"W	16.75
L58	N05°53'45"W	35.74
L59	N07°02'50"W	41.99

WETLAND NOTE:
WETLAND CONSERVATION AREAS AS SHOWN HEREON MAY BE SUBJECT TO CERTAIN RESTRICTIONS FOUND IN PASCO COUNTY LAND DEVELOPMENT CODE, SOUTHWEST FLORIDA WATER MANAGEMENT DISTRICT (SWFWMD) ENVIRONMENTAL RESOURCE PERMIT, AND/OR THE UNITED STATES ARMY CORPS OF ENGINEERS (C.O.E.) PERMIT.



SEE SHEET 6 OF 10

SEE SHEET 8 OF 10

DETAIL "F"
NOT TO SCALE

DETAIL "G"
NOT TO SCALE

DETAIL "E"
NOT TO SCALE

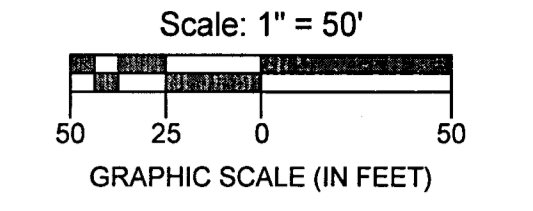
LANDMARK
Engineering & Surveying Corporation

8515 Palm River Road | Tampa, Florida 33619
(813) 621-7841 | (813) 664-1832 (fax)
www.lesco.com | L.B. # 3913

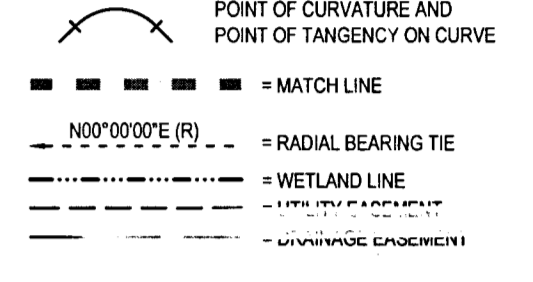
PALM WIND - PHASE 1

A SUBDIVISION OF A PORTION OF THE WEST 1/2 OF SECTION 33, TOWNSHIP 24 SOUTH, RANGE 17 EAST, PASCO COUNTY, FLORIDA

PLAT BOOK: 97 PAGE: 161



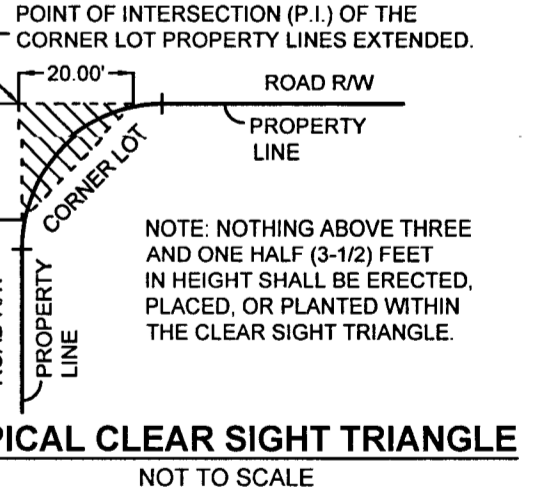
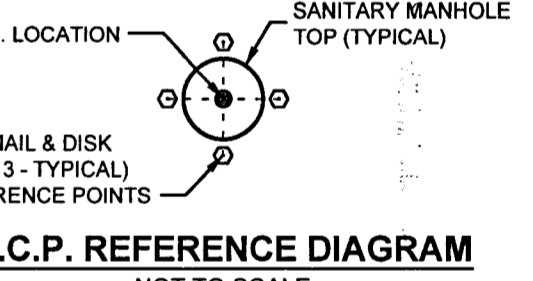
- LEGEND**
- FOUND 4"X4" CONCRETE MONUMENT (UNLESS OTHERWISE NOTED)
 - SET 4"X4" CONCRETE MONUMENT (UNLESS OTHERWISE NOTED)
 - SET PK NAIL & DISK (UNLESS OTHERWISE NOTED)
 - FOUND PK NAIL & DISK (UNLESS OTHERWISE NOTED)
 - ◎ PERMANENT CONTROL POINT (UNLESS OTHERWISE NOTED)



SEE SHEET 2 FOR GENERAL NOTES AND KEY MAP

- AUE = ACCESS & UTILITY EASEMENT
- CA = CENTERLINE
- CCR = CERTIFIED CORNER RECORD
- CST = CLEAR SIGHT TRIANGLE
- D.E. = DRAINAGE EASEMENT
- FCM = FOUND CONCRETE MONUMENT
- FIR = FOUND IRON ROD
- HOA = HOMEOWNERS ASSOCIATION
- IP = IMPROVED SURFACE
- N202 = NORTH MEASURED DISTANCE
- NO ID = NO IDENTIFICATION
- NMS = NO MONUMENT FOUND OR SET
- N.T.S. = NOT TO SCALE
- O.R. = OFFICIAL RECORD
- OR = OFFICIAL RECORD
- NR = NON-RADIAL
- O.A. = OVER ALL
- R.W. = RIGHT-OF-WAY
- (R) = RADIAL
- POB = POINT OF BEGINNING
- POC = POINT OF COMMENCEMENT
- PCR = PERMANENT CONTROL POINT
- PRM = PERMANENT REFERENCE MONUMENT
- P.D.E. = PUBLIC DRAINAGE EASEMENT
- P.U.E. = PUBLIC UTILITY EASEMENT
- SEC = SECTION
- SWFWMD = SOUTHWEST FLORIDA WATER MANAGEMENT DISTRICT

NOTE: IN THE CASE WHERE THE LOCATION OF A P.C.P. FALLS IN THE TOP OF A SANITARY MANHOLE OR OTHER UTILITY STRUCTURE AND IT CAN NOT BE SET, FOUR (4) REFERENCE POINTS ARE SET ESTABLISHING TWO LINES THAT INTERSECT AT THE P.C.P. LOCATION.

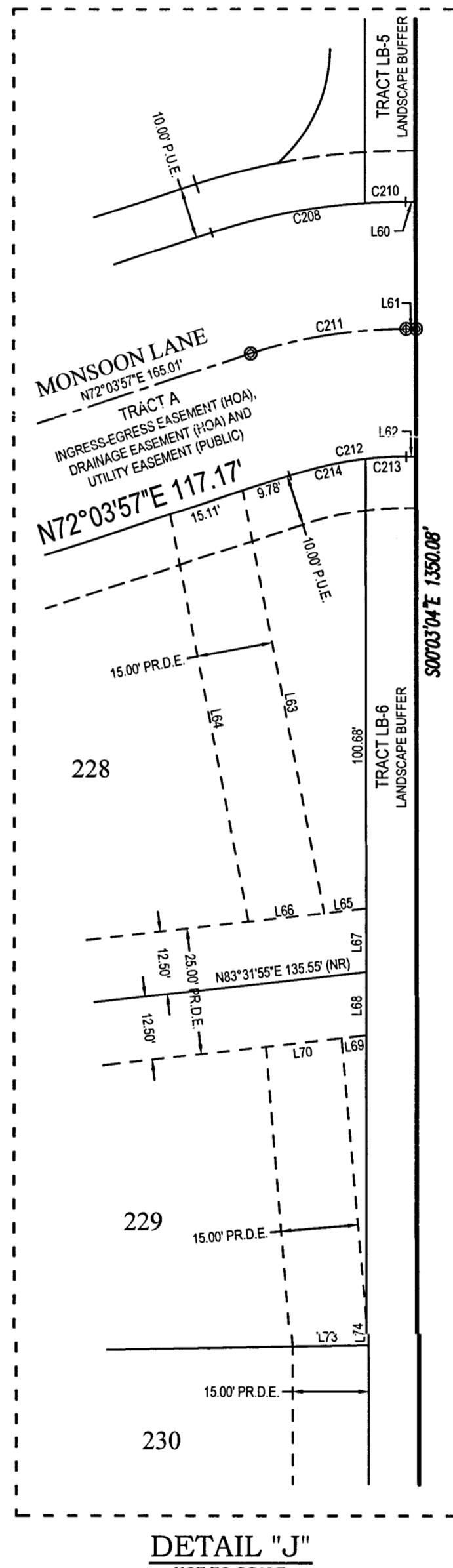
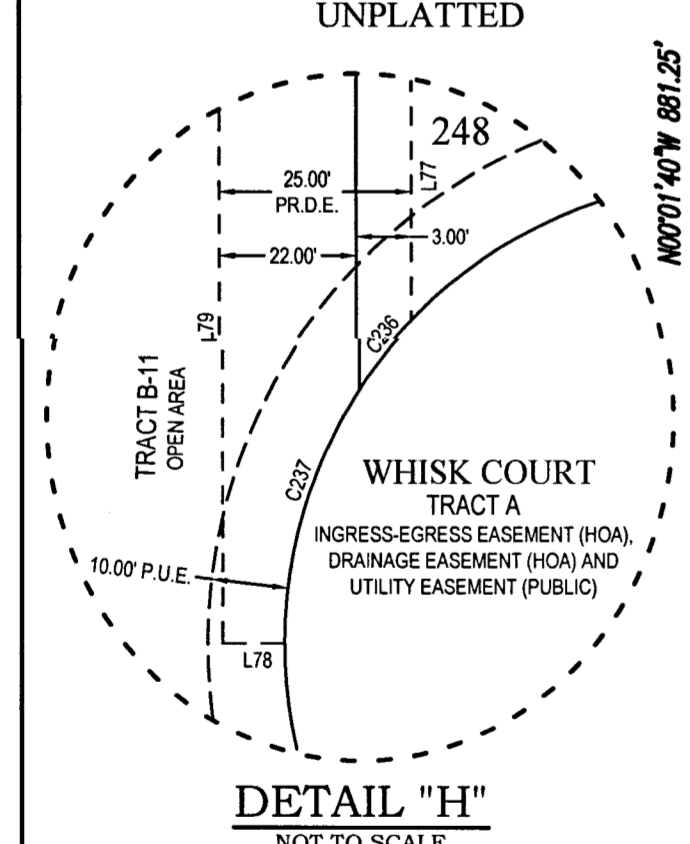
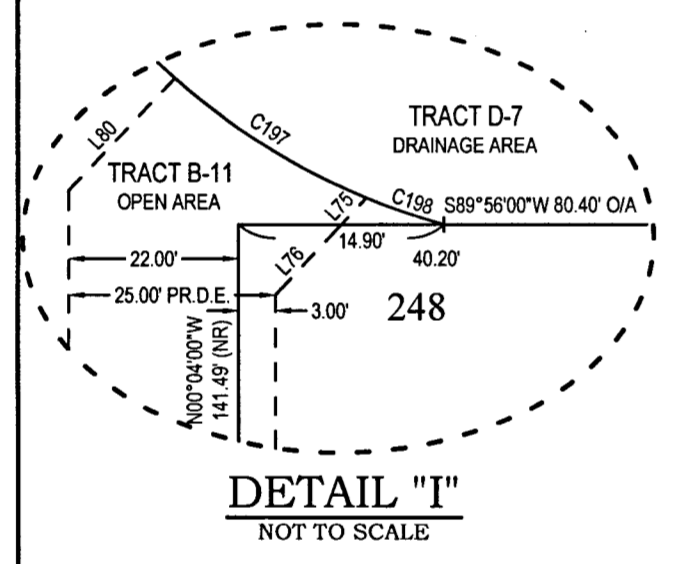
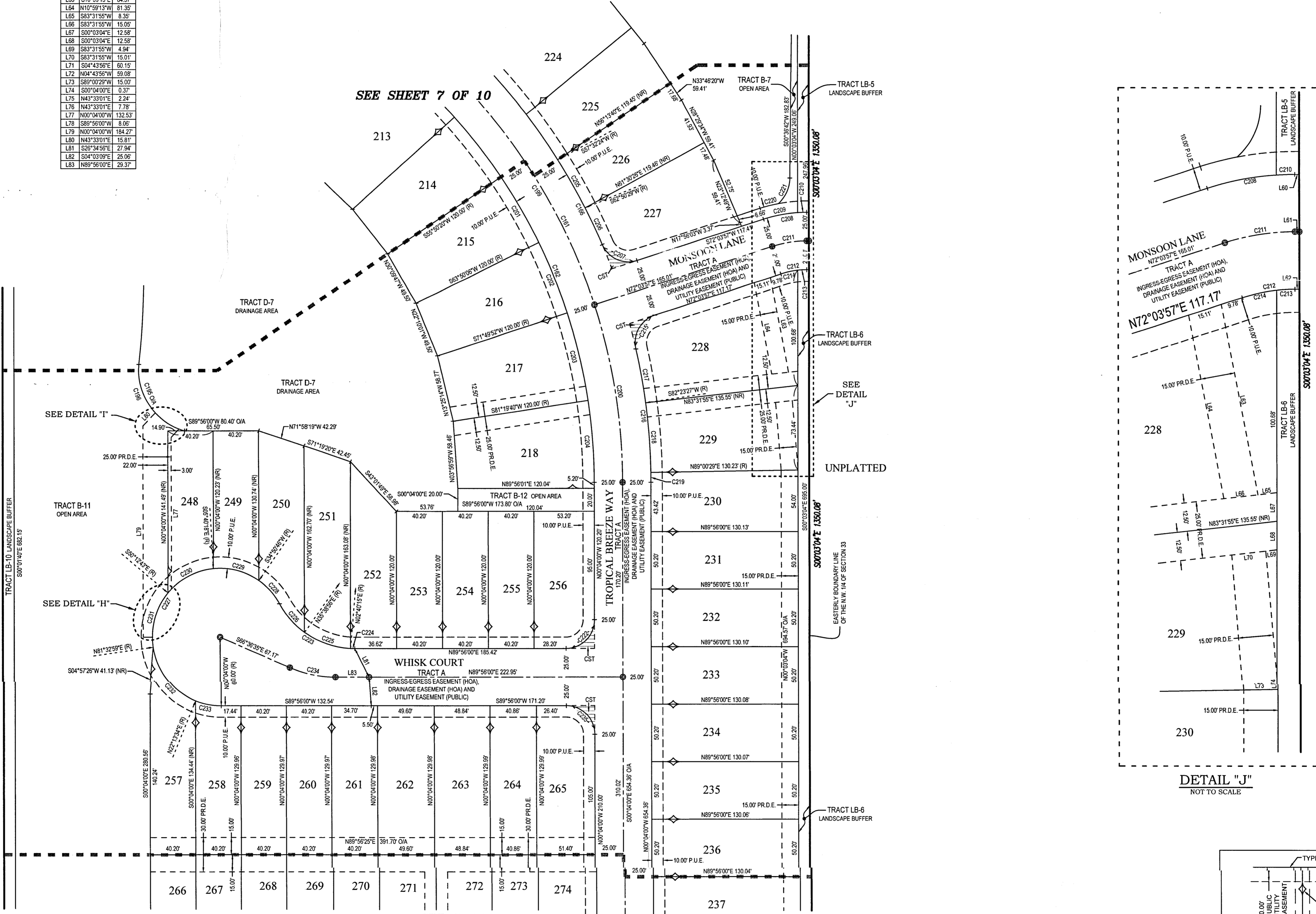


LANDMARK
Engineering & Surveying Corporation

8515 Palm River Road | Tampa, Florida 33619
(813) 621-7841 | (813) 664-1832 (fax)
www.lsc.com | L.B. # 3913

Curve #	Radius	Delta	Chord	Chord Bearing
C161	500.00	53°38'15"	467.78	N26°52'07"W
C162	475.00	53°38'15"	444.40	N26°52'07"W
C166	525.00	30°22'55"	278.38	N38°28'49"W
C165	55.00	78°57'50"	76.76	S34°48'03"E
C196	55.00	47°50'59"	45.93	S18°45'38"E
C197	55.00	26°39'00"	25.58	S55°00'37"E
C198	55.00	08°27'51"	5.28	S77°04'03"E
C199	500.00	35°34'59"	310.52	N35°52'45"W
C200	500.00	18°01'15"	157.26	N00°04'37"W
C201	475.00	07°59'46"	66.29	N30°09'47"W
C202	475.00	07°59'46"	66.29	N27°10'01"W
C203	475.00	09°59'47"	78.73	N13°25'14"W
C204	475.00	08°38'21"	71.34	N04°22'10"W
C205	525.00	05°18'04"	48.58	N29°48'33"W
C206	525.00	03°52'07"	35.45	N25°13'29"W
C207	25.00	84°38'39"	38.99	S50°36'42"E
C208	125.00	17°52'59"	39.01	S81°02'27"W
C209	125.00	14°11'40"	30.97	S78°09'47"W
C210	125.00	03°41'19"	8.05	S89°05'17"W
C211	100.00	17°52'59"	31.21	S81°00'27"W
C212	75.00	17°52'59"	23.41	S81°00'27"W
C213	75.00	06°09'18"	8.05	S86°52'17"W
C214	75.00	11°43'40"	15.35	S77°55'47"W
C215	25.00	84°38'39"	37.98	S27°39'14"W
C216	525.00	12°47'27"	117.21	N20°27'45"W
C217	525.00	05°14'56"	48.10	N10°14'02"W
C218	525.00	06°37'02"	60.63	N04°18'02"W
C219	525.00	07°53'32"	8.48	N00°31'45"W
C220	135.00	07°53'32"	16.71	S78°36'52"W
C221	30.00	48°22'25"	25.33	N24°47'56"E
C222	25.00	90°00'00"	39.27	S44°56'00"E
C223	75.00	61°13'04"	80.13	S59°27'28"E
C224	75.00	02°44'15"	3.58	S86°41'52"E
C225	75.00	32°58'41"	43.17	S70°28'26"E
C226	75.00	25°30'09"	33.38	S41°38'00"E
C227	60.00	241°13'04"	252.69	S30°32'32"W
C228	60.00	26°18'18"	27.59	N42°00'59"W
C229	60.00	40°31'04"	42.43	N73°24'46"W
C230	60.00	44°32'25"	46.64	S82°03'30"W
C231	60.00	48°14'18"	50.52	S15°40'08"W
C232	60.00	59°19'25"	62.12	S38°06'43"E
C233	60.00	22°17'34"	23.34	S78°55'13"E
C234	100.00	23°27'25"	40.84	S78°20'17"E
C235	25.00	90°00'00"	39.27	S44°56'00"W
C236	60.00	04°16'58"	4.48	S41°55'48"W
C237	60.00	39°48'37"	41.69	S19°52'59"W

Line #	Bearing	Distance
L60	S89°56'39"W	1.96
L61	N89°56'59"E	1.96
L62	N89°56'59"E	1.96
L63	S10°59'19"E	84.37
L64	N10°59'19"W	81.35
L65	S83°31'58"W	4.94
L66	S83°31'55"W	15.05
L67	S00°03'04"E	12.58
L68	S00°03'04"E	12.58
L69	S83°31'58"W	4.94
L70	S83°31'55"W	15.01
L71	S04°43'56"E	60.15
L72	N04°49'56"W	59.08
L73	S89°02'39"W	15.00
L74	S00°04'02"E	0.37
L75	N43°33'01"E	2.24
L76	N43°33'01"E	7.78
L77	N00°04'00"W	132.53
L78	S89°56'59"W	8.05
L79	N00°04'00"W	184.27
L80	N43°33'01"E	15.81
L81	S00°34'56"E	27.94
L82	S04°03'09"E	25.86
L83	N89°56'00"E	29.37



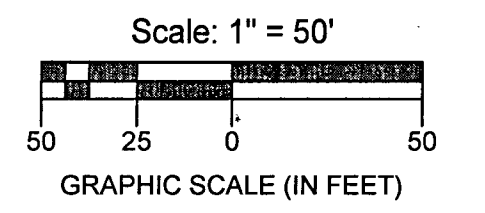
SEE SHEET 9 OF 10

SEE SHEET 7 OF 10

PALM WIND - PHASE 1

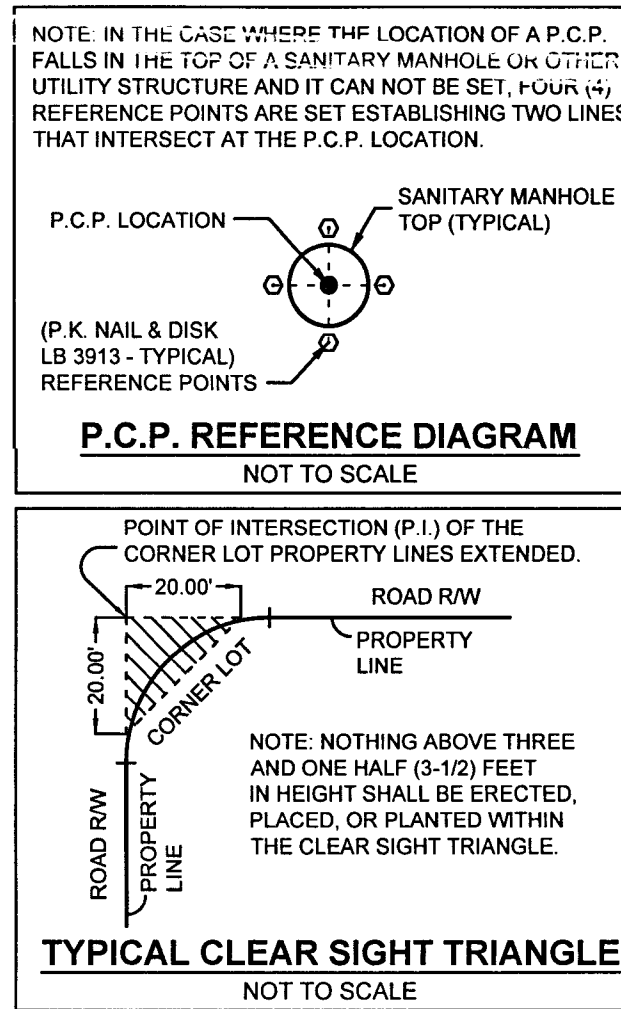
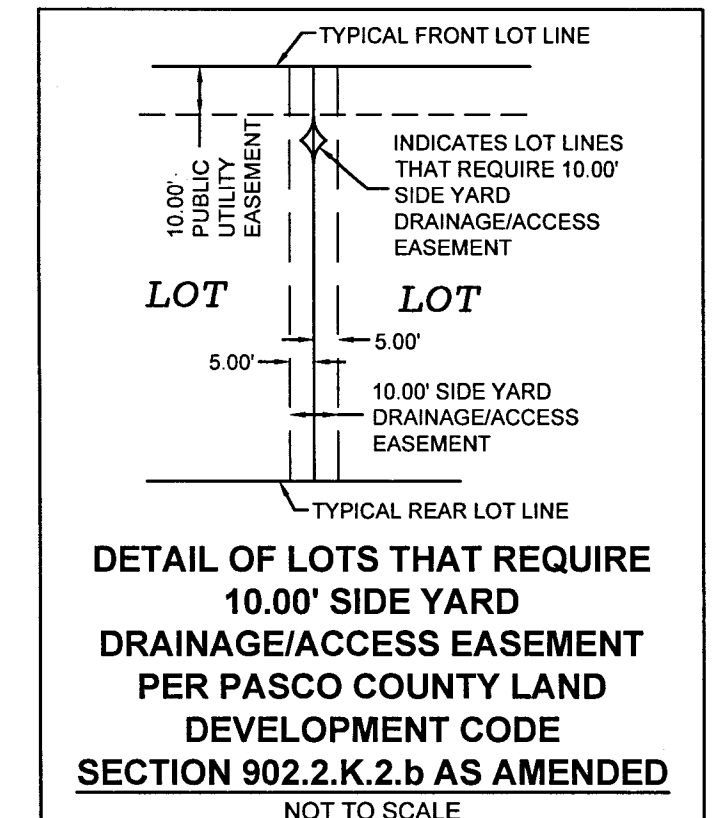
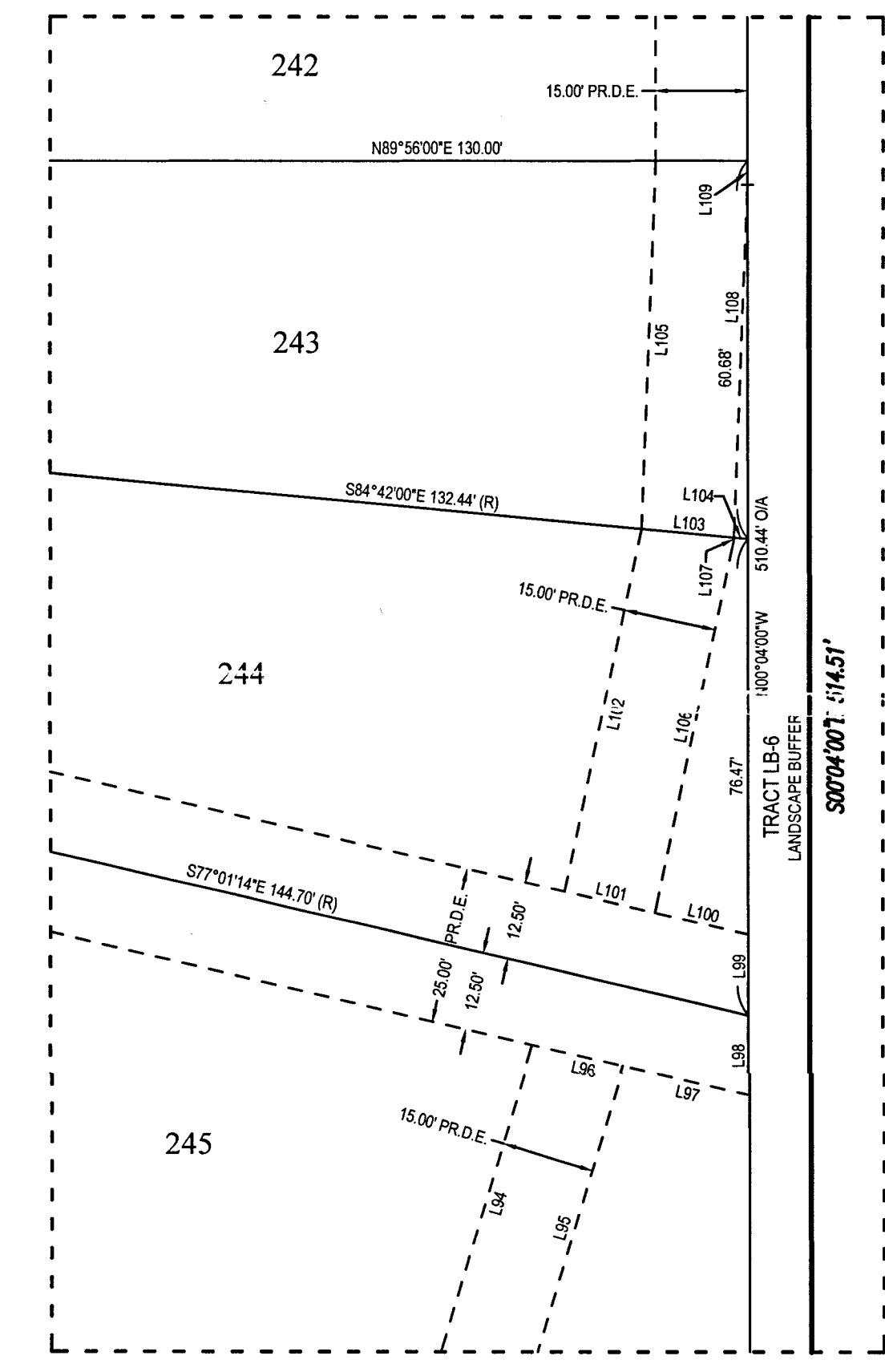
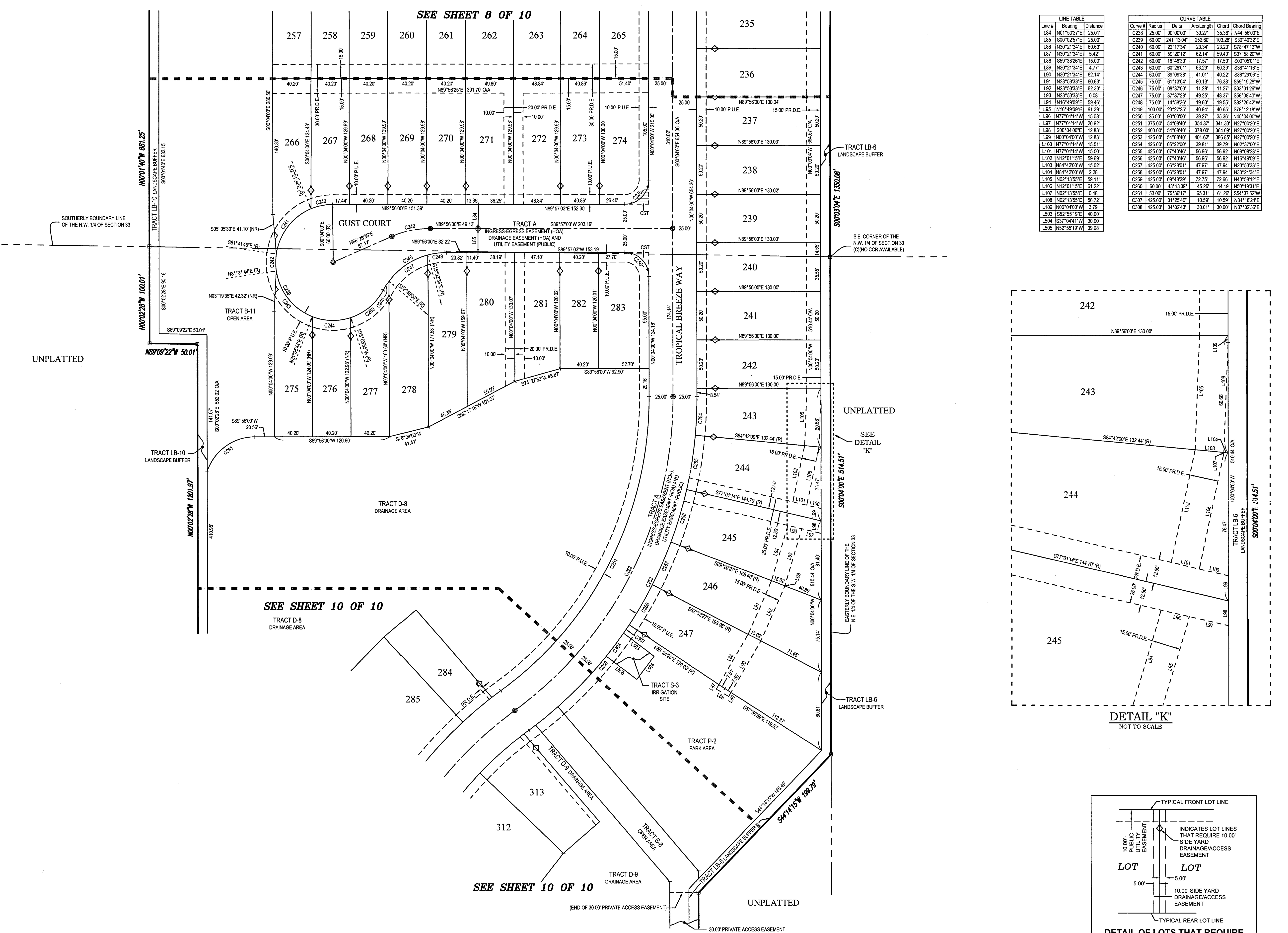
A SUBDIVISION OF A PORTION OF THE WEST 1/2 OF SECTION 33, TOWNSHIP 24 SOUTH, RANGE 17 EAST, PASCO COUNTY, FLORIDA

PLAT BOOK: 97 PAGE: 162



- LEGEND**
- FOUND 4"x4" CONCRETE MONUMENT
PRM LB 3913
(UNLESS OTHERWISE NOTED)
 - SET 4"x4" CONCRETE MONUMENT
PRM LB 3913
 - SET PK NAIL & DISK
PRM LB 3913
 - FOUND PK NAIL & DISK
PRM LB 3913
 - PERMANENT CONTROL POINT
SET LB 3913 PK NAIL & DISK
- POINT OF CURVATURE AND
POINT OF TANGENCY ON CURVE
- MATCH LINE
- RADIAL BEARING TIE
- WETLAND LINE
- UTILITY EASEMENT
- DRAINAGE EASEMENT

LINE TABLE				CURVE TABLE					
Line #	Bearing	Distance		Curve #	Radius	Delta	Chord	Chord Bearing	
L84	N01°59'37"E	25.01'		C238	25.00'	90°00'00"	39.27'	35.36'	N44°56'00"E
L85	S00°02'57"E	25.00'		C239	60.00'	241°13'04"	252.60'	103.28'	S30°40'32"E
L86	N30°21'34"E	50.63'		C240	60.00'	22°17'34"	23.34'	23.27'	S78°47'13"W
L87	N30°21'34"E	54.42'		C241	60.00'	159°20'12"	62.14'	59.40'	S37°52'27"W
L88	S59°38'26"E	15.00'		C242	60.00'	15°46'30"	17.57'	17.50'	S00°09'01"E
L89	N30°21'34"E	4.77'		C243	60.00'	60°29'01"	63.29'	60.39'	S38°41'16"E
L90	N30°21'34"E	62.14'		C244	60.00'	39°09'38"	41.01'	40.22'	S88°29'06"E
L91	N23°53'33"E	60.63'		C245	75.00'	61°13'04"	80.13'	76.36'	S59°19'28"W
L92	N23°53'33"E	62.33'		C246	75.00'	189°37'00"	11.28'	11.27'	S33°10'28"W
L93	N23°53'33"E	0.08'		C247	75.00'	37°37'28"	49.25'	48.37'	S66°08'40"W
L94	N16°49'09"E	59.46'		C248	75.00'	14°58'36"	19.60'	19.55'	S82°28'42"W
L95	N16°49'09"E	61.39'		C249	100.00'	23°27'25"	40.94'	40.65'	S78°12'15"W
L96	N77°01'14"W	15.00'		C250	25.00'	90°00'00"	39.27'	35.36'	N44°56'00"E
L97	N77°01'14"W	20.92'		C251	375.00'	54°08'40"	354.37'	341.33'	N27°00'20"E
L98	S00°04'00"W	12.83'		C252	400.00'	54°08'40"	378.00'	364.09'	N27°00'20"E
L99	N00°04'00"W	12.83'		C253	425.00'	54°08'40"	401.62'	386.65'	N27°00'20"E
L100	N77°01'14"W	15.51'		C254	425.00'	05°22'00"	39.81'	38.79'	N02°37'00"E
L101	N77°01'14"W	15.00'		C255	425.00'	07°40'40"	56.98'	56.02'	N00°08'20"E
L102	N12°01'15"E	59.69'		C256	425.00'	07°40'40"	56.98'	56.02'	N16°49'09"E
L103	N84°42'00"W	15.02'		C257	425.00'	06°28'01"	47.97'	47.84'	N23°53'33"E
L104	N84°42'00"W	2.28'		C258	425.00'	06°28'01"	47.97'	47.84'	N30°21'34"E
L105	N02°13'55"E	58.11'		C259	425.00'	09°48'00"	72.75'	72.69'	N43°58'12"E
L106	N12°01'15"E	61.22'		C260	60.00'	43°13'09"	45.26'	44.19'	N00°19'31"E
L107	N02°13'55"E	0.48'		C261	53.00'	70°36'17"	65.31'	61.26'	S84°37'52"W
L108	N02°13'55"E	56.72'		C262	425.00'	01°25'40"	10.59'	10.59'	N34°18'24"E
L109	N00°04'00"W	3.79'		L503	S58°25'19"E	40.00'			
L503	S58°25'19"E	40.00'		L504	S37°04'41"W	30.00'			
L504	S37°04'41"W	30.00'		L505	N52°55'19"W	39.98'			



LANDMARK
Engineering & Surveying Corporation

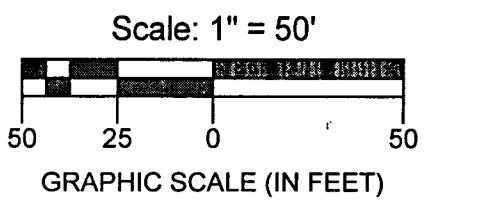
8515 Palm River Road
(813) 821-7841
www.lesco.com

Tampa, Florida 33619
(813) 664-1832 (fax)
L.B. # 3913

PALM WIND - PHASE 1

A SUBDIVISION OF A PORTION OF THE WEST 1/2 OF SECTION 33, TOWNSHIP 24 SOUTH, RANGE 17 EAST, PASCO COUNTY, FLORIDA

PLAT BOOK: 97 PAGE: 163

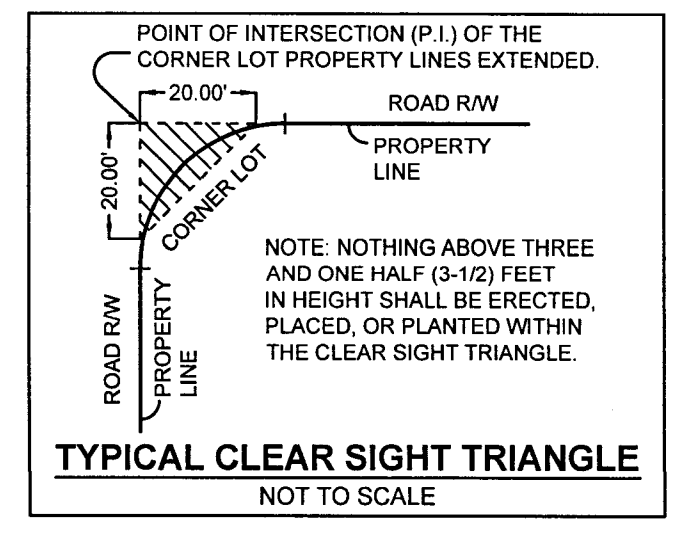
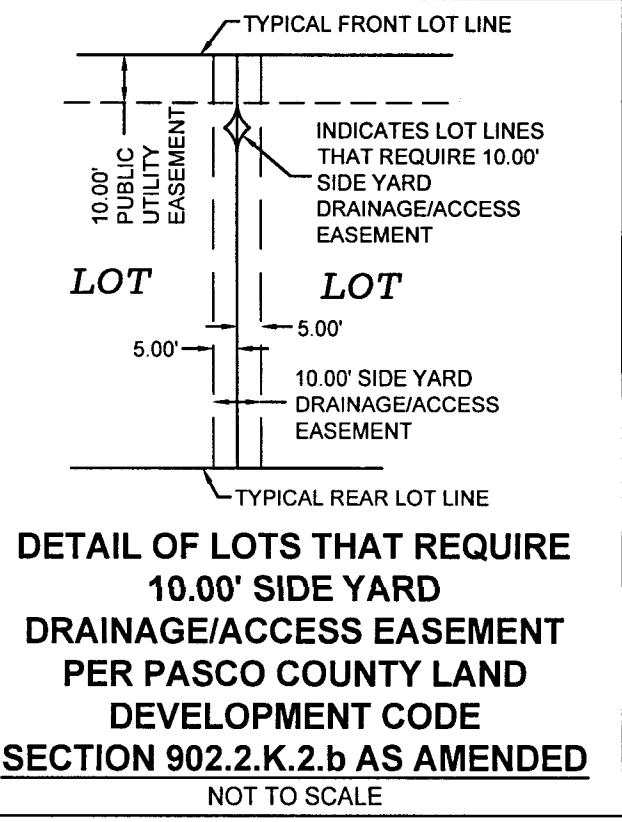
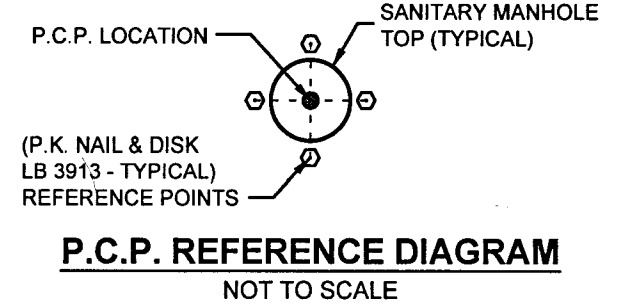


- LEGEND**
- FOUND 4"x4" CONCRETE MONUMENT PRM LB 3913 (UNLESS OTHERWISE NOTED)
 - SET 4"x4" CONCRETE MONUMENT PRM LB 3913
 - SET PK NAIL & DISK PRM LB 3913
 - FOUND PK NAIL & DISK PRM LB 3913
 - ⊙ PERMANENT CONTROL POINT SET LB 3913 PK NAIL & DISK
- POINT OF CURVATURE AND POINT OF TANGENCY ON CURVE
- MATCH LINE
 - RADIALLY BEARING TIE
 - UTILITY EASEMENT
 - DRAINAGE EASEMENT

SEE SHEET 2 FOR GENERAL NOTES AND KEY MAP.

- ABUE = ACCESS & UTILITY EASEMENT
 CA = CENTERLINE
 CCR = CERTIFIED CORNER RECORD
 CST = CLEAR SIGHT TRIANGLE
 D.E. = DRAINAGE EASEMENT
 FCM = FOUND CONCRETE MONUMENT
 F.P. = FOUND POINT
 FWA = FLORIDA WATER ASSOCIATION
 LB = LICENSED BUSINESS
 NAD83 = NORTH AMERICAN DATUM 1983
 NO I.D. = NO IDENTIFICATION
 N.M.S. = NO MONUMENT FOUND OR SET
 N.T.S. = NOT TO SCALE
 O.R. = OFFICIAL RECORDS
 (NR) = NON-RADIAL
 OA = OTHER ALL
 RW = RIGHT-OF-WAY
 (R) = RADIAL
 POB = POINT OF BEGINNING
 POC = POINT OF COMMENCEMENT
 PCP = PERMANENT CONTROL POINT
 PRM = PERMANENT REFERENCE MONUMENT
 P.D.E. = PUBLIC DRAINAGE EASEMENT
 P.R.D.E. = PRIVATE DRAINAGE EASEMENT
 P.U.E. = PUBLIC UTILITY EASEMENT
 SEC = SECTION
 SWFWMD = SOUTH WEST FLORIDA WATER MANAGEMENT DISTRICT

NOTE: IN THE CASE WHERE THE LOCATION OF A P.C.P. FALLS IN THE TOP OF A SANITARY MANHOLE OR OTHER UTILITY STRUCTURE AND IT CAN NOT BE SET, FOUR (4) REFERENCE POINTS ARE SET ESTABLISHING TWO LINES THAT INTERSECT AT THE P.C.P. LOCATION.



CURVE TABLE					
Curve #	Radius	Delta	Chord	Chord Bearing	
C251	375.00	54°08'40"	354.37	341.33	N27°00'20"E
C252	400.00	54°08'40"	378.00	364.09	N27°00'20"E
C253	425.00	54°08'40"	401.62	386.85	N27°00'20"E
C254	450.00	54°08'40"	425.25	409.61	N27°00'20"E
C255	475.00	54°08'40"	448.88	432.37	N27°00'20"E
C256	500.00	54°08'40"	472.51	455.13	N27°00'20"E
C257	525.00	54°08'40"	496.14	477.89	N27°00'20"E
C258	550.00	54°08'40"	519.77	500.65	N27°00'20"E
C259	575.00	54°08'40"	543.40	523.41	N27°00'20"E
C260	600.00	54°08'40"	567.03	546.17	N27°00'20"E
C261	625.00	54°08'40"	590.66	568.93	N27°00'20"E
C262	650.00	54°08'40"	614.29	591.69	N27°00'20"E
C263	675.00	54°08'40"	637.92	614.45	N27°00'20"E
C264	700.00	54°08'40"	661.55	637.21	N27°00'20"E
C265	725.00	54°08'40"	685.18	659.97	N27°00'20"E
C266	750.00	54°08'40"	708.81	682.73	N27°00'20"E
C267	775.00	54°08'40"	732.44	705.49	N27°00'20"E
C268	800.00	54°08'40"	756.07	728.25	N27°00'20"E
C269	825.00	54°08'40"	779.70	751.01	N27°00'20"E
C270	850.00	54°08'40"	803.33	773.77	N27°00'20"E
C271	875.00	54°08'40"	826.96	796.53	N27°00'20"E
C272	900.00	54°08'40"	850.59	819.29	N27°00'20"E
C273	925.00	54°08'40"	874.22	842.05	N27°00'20"E
C274	950.00	54°08'40"	897.85	864.81	N27°00'20"E
C275	975.00	54°08'40"	921.48	887.57	N27°00'20"E
C276	1000.00	54°08'40"	945.11	910.33	N27°00'20"E
C277	1025.00	54°08'40"	968.74	933.09	N27°00'20"E
C278	1050.00	54°08'40"	992.37	955.85	N27°00'20"E
C279	1075.00	54°08'40"	1016.00	978.61	N27°00'20"E
C280	1100.00	54°08'40"	1039.63	1001.37	N27°00'20"E
C281	1125.00	54°08'40"	1063.26	1024.13	N27°00'20"E
C282	1150.00	54°08'40"	1086.89	1046.89	N27°00'20"E
C283	1175.00	54°08'40"	1110.52	1069.65	N27°00'20"E
C284	1200.00	54°08'40"	1134.15	1092.41	N27°00'20"E
C285	1225.00	54°08'40"	1157.78	1115.17	N27°00'20"E
C286	1250.00	54°08'40"	1181.41	1137.93	N27°00'20"E
C287	1275.00	54°08'40"	1205.04	1160.69	N27°00'20"E
C288	1300.00	54°08'40"	1228.67	1183.45	N27°00'20"E
C289	1325.00	54°08'40"	1252.30	1206.21	N27°00'20"E
C290	1350.00	54°08'40"	1275.93	1228.97	N27°00'20"E
C291	1375.00	54°08'40"	1300.56	1251.73	N27°00'20"E
C292	1400.00	54°08'40"	1324.19	1274.49	N27°00'20"E
C293	1425.00	54°08'40"	1347.82	1297.25	N27°00'20"E
C294	1450.00	54°08'40"	1371.45	1319.01	N27°00'20"E
C295	1475.00	54°08'40"	1395.08	1341.77	N27°00'20"E
C296	1500.00	54°08'40"	1418.71	1364.53	N27°00'20"E
C297	1525.00	54°08'40"	1442.34	1387.29	N27°00'20"E
C298	1550.00	54°08'40"	1465.97	1410.05	N27°00'20"E
C299	1575.00	54°08'40"	1489.60	1432.81	N27°00'20"E
C300	1600.00	54°08'40"	1513.23	1455.57	N27°00'20"E
C301	1625.00	54°08'40"	1536.86	1478.33	N27°00'20"E
C302	1650.00	54°08'40"	1560.49	1501.09	N27°00'20"E
C303	1675.00	54°08'40"	1584.12	1523.85	N27°00'20"E
C304	1700.00	54°08'40"	1607.75	1546.61	N27°00'20"E
C305	1725.00	54°08'40"	1631.38	1569.37	N27°00'20"E
C306	1750.00	54°08'40"	1655.01	1592.13	N27°00'20"E
C307	1775.00	54°08'40"	1678.64	1614.89	N27°00'20"E
C308	1800.00	54°08'40"	1702.27	1637.65	N27°00'20"E
C309	1825.00	54°08'40"	1725.90	1660.41	N27°00'20"E
C310	1850.00	54°08'40"	1749.53	1683.17	N27°00'20"E
C311	1875.00	54°08'40"	1773.16	1705.93	N27°00'20"E
C312	1900.00	54°08'40"	1796.79	1728.69	N27°00'20"E
C313	1925.00	54°08'40"	1820.42	1751.45	N27°00'20"E
C314	1950.00	54°08'40"	1844.05	1774.21	N27°00'20"E
C315	1975.00	54°08'40"	1867.68	1796.97	N27°00'20"E
C316	2000.00	54°08'40"	1891.31	1819.73	N27°00'20"E
C317	2025.00	54°08'40"	1914.94	1842.49	N27°00'20"E
C318	2050.00	54°08'40"	1938.57	1865.25	N27°00'20"E
C319	2075.00	54°08'40"	1962.20	1888.01	N27°00'20"E
C320	2100.00	54°08'40"	1985.83	1910.77	N27°00'20"E

LINE TABLE		
Line #	Bearing	Distance
L110	S73°52'00"E	15.62
L111	S15°58'40"W	21.16
L100	S00°09'16"W	25.00
L501	S00°09'16"W	50.00
L502	S00°09'16"W	24.95
L503	S40°50'40"E	23.22
L504	N40°29'19"W	22.29
L505	N07°52'10"E	4.22

