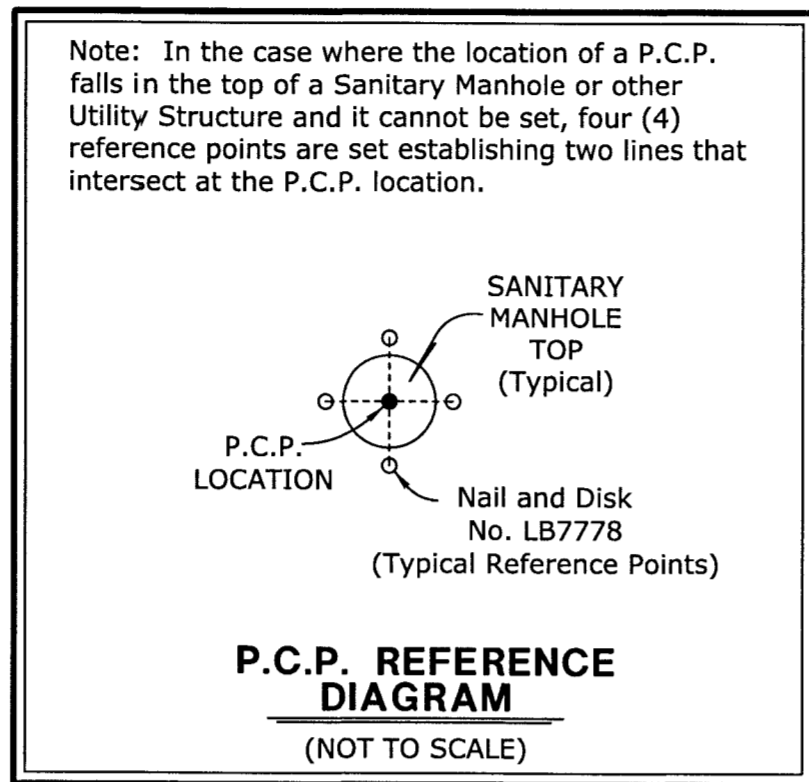




**TWO RIVERS PARCEL E2 PHASE A**  
 LYING IN SECTION 33, TOWNSHIP 26 SOUTH, RANGE 21 EAST, PASCO COUNTY, FLORIDA

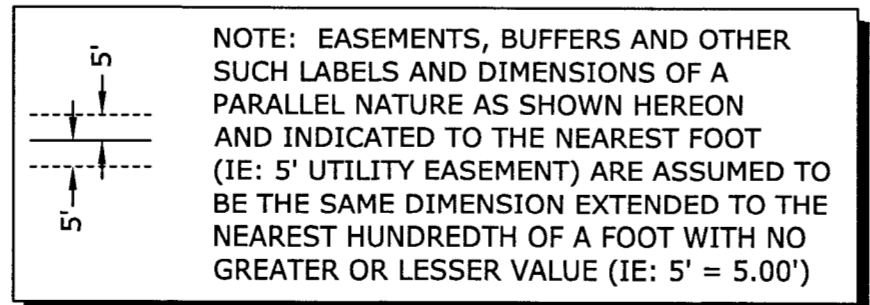


The coordinate values shown hereon are based on the Pasco County Primary Horizontal Control Network and were established to Pasco County Surveying and Mapping accepted methods and procedures for establishment of horizontal surveying control, and/or approved by the County Surveyor.

**NOTE:**  
 A 1/2 INCH DIAMETER IRON ROD WITH CAP No. LB7778, OR A 5/8 INCH DIAMETER IRON PIPE WITH CAP No. LB7778, WILL BE SET AT EACH LOT CORNER AS REQUIRED BY CHAPTER 177 OF THE FLORIDA STATUTES WITHIN THE TIME ALLOTTED IN 177.091 (9), UNLESS PRIOR MONUMENTATION OF THE LOT CORNER IS FOUND IN PLACE.

**NOTICE:**  
 This plat, as recorded in its graphic form, is the official depiction of the subdivided lands described herein and will in no circumstances be supplanted in authority by any other graphic or digital form of the plat. There may be additional restrictions that are not recorded on this plat that may be found in the public records of this county.

**NOTE:**  
 All platted utility easements shall provide that such easements shall also be easements for the construction, installation, maintenance, and operation of cable television services; provided, however, no such construction, installation, maintenance, and operation of cable television services shall interfere with the facilities and services of an electric, telephone, gas, or other public utility. In the event a cable television company damages the facilities of a public utility, it shall be solely responsible for the damages. This section shall not apply to those private easements granted to or obtained by a particular electric, telephone, gas, or other public utility. Such construction, installation, maintenance, and operation shall comply with the National Electrical Safety Code as adopted by the Florida Public Service Commission.



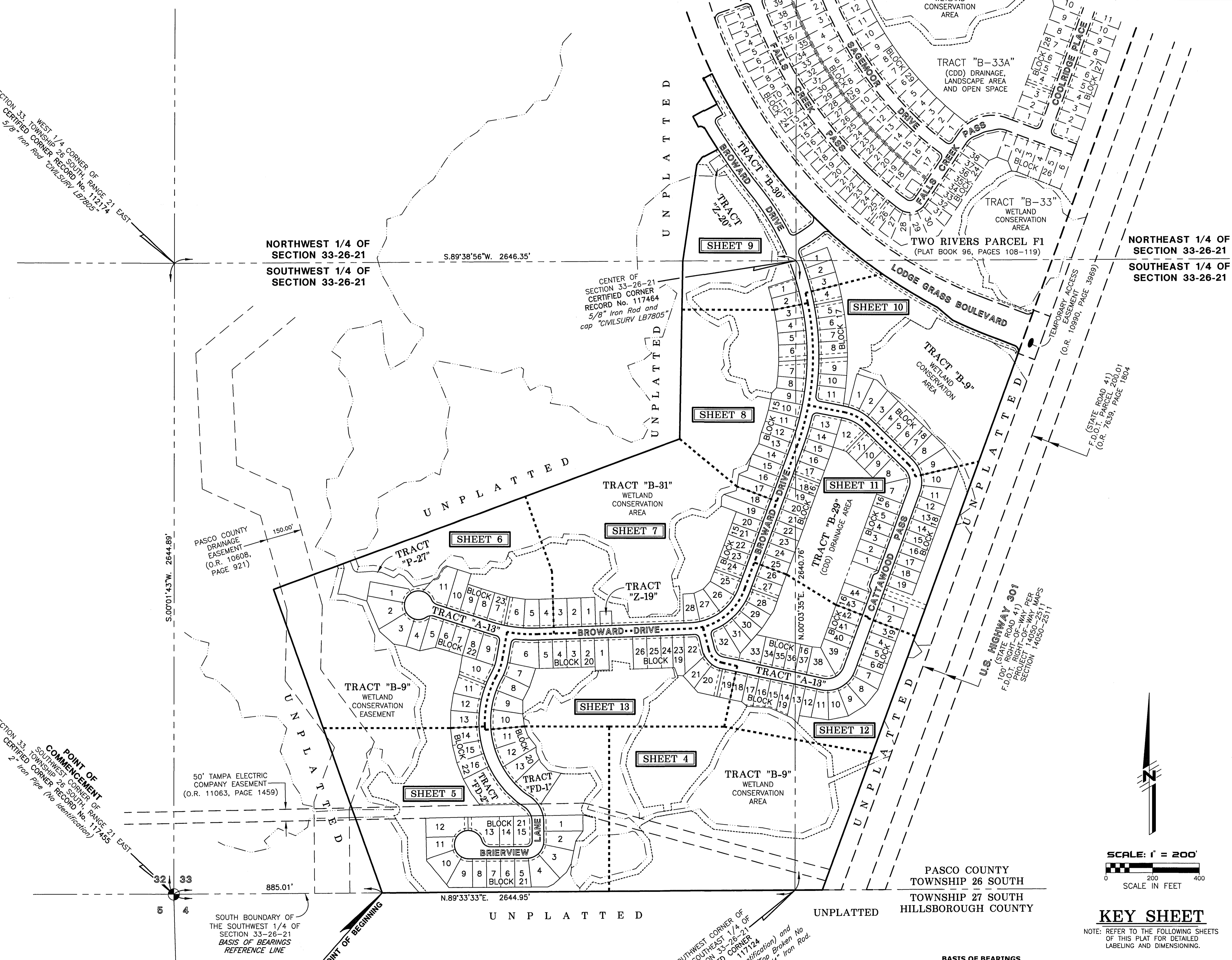
TRACT	DESIGNATION	ACREAGE
TRACT "A-13"	(CDD) RIGHT-OF-WAY; (PUBLIC) UTILITY EASEMENT	8.823 Ac.±
TRACT "B-9"	(CDD) DRAINAGE, LANDSCAPE AREA AND OPEN SPACE; (CDD) LANDSCAPE AREA AND OPEN SPACE; WETLAND CONSERVATION AREA; WETLAND CONSERVATION EASEMENT	50.189 Ac.±
TRACT "B-29"	(CDD) DRAINAGE AREA; (CDD) LANDSCAPE AREA AND OPEN SPACE	4.691 Ac.±
TRACT "B-30"	(CDD) LANDSCAPE AREA AND OPEN SPACE; (PUBLIC) PEDESTRIAN ACCESS EASEMENT; PASCO COUNTY UTILITY EASEMENT	1.390 Ac.±
TRACT "B-31"	(CDD) DRAINAGE, LANDSCAPE AREA AND OPEN SPACE; (CDD) LANDSCAPE AREA AND OPEN SPACE; WETLAND CONSERVATION AREA	25.764 Ac.±
TRACT "FD-1"	FUTURE DEVELOPMENT	0.421 Ac.±
TRACT "FD-2"	FUTURE DEVELOPMENT	0.467 Ac.±
TRACT "P-27"	(CDD) PARK AREA	0.542 Ac.±
TRACT "Z-19"	(PUBLIC) PUMP STATION SITE	0.070 Ac.±
TRACT "Z-20"	(PUBLIC) PUMP STATION SITE	0.070 Ac.±

**TWO RIVERS PARCEL E2 PHASE A**  
 LYING IN SECTION 33, TOWNSHIP 26 SOUTH, RANGE 21 EAST, PASCO COUNTY, FLORIDA

SECTION 33, TOWNSHIP 26 SOUTH, RANGE 21 EAST  
 CERTIFIED CORNER RECORD No. 117174  
 5/8" Iron Rod CIVLSURV LB7805

POINT OF COMMENCEMENT  
 SOUTHWEST CORNER OF  
 SECTION 33-26-21  
 2" Iron Pipe (No Identification)

SOUTHWEST CORNER OF  
 THE SOUTHWEST 1/4 OF  
 SECTION 33-26-21  
 CERTIFIED CORNER  
 RECORD No. 117174  
 3/4" Iron Rod (No Identification) and  
 4"x4" Concrete Monument (Top Broken No  
 Identification) 1.95' East of 3/4" Iron Rod.



- LEGEND**
- O.R. - Official Records Book
  - F.D.O.T. - Florida Department of Transportation

**Wetland Conservation Area Note:**  
 Wetland Conservation Areas as shown hereon may be subject to certain restrictions found in: Pasco County Land Development Code, Southwest Florida Water Management District (S.W.F.W.M.D.) Environmental Resource Permit, and/or the United States Army Corps of Engineers (C.O.E.) Permit.



**KEY SHEET**  
 NOTE: REFER TO THE FOLLOWING SHEETS OF THIS PLAT FOR DETAILED LABELING AND DIMENSIONING.

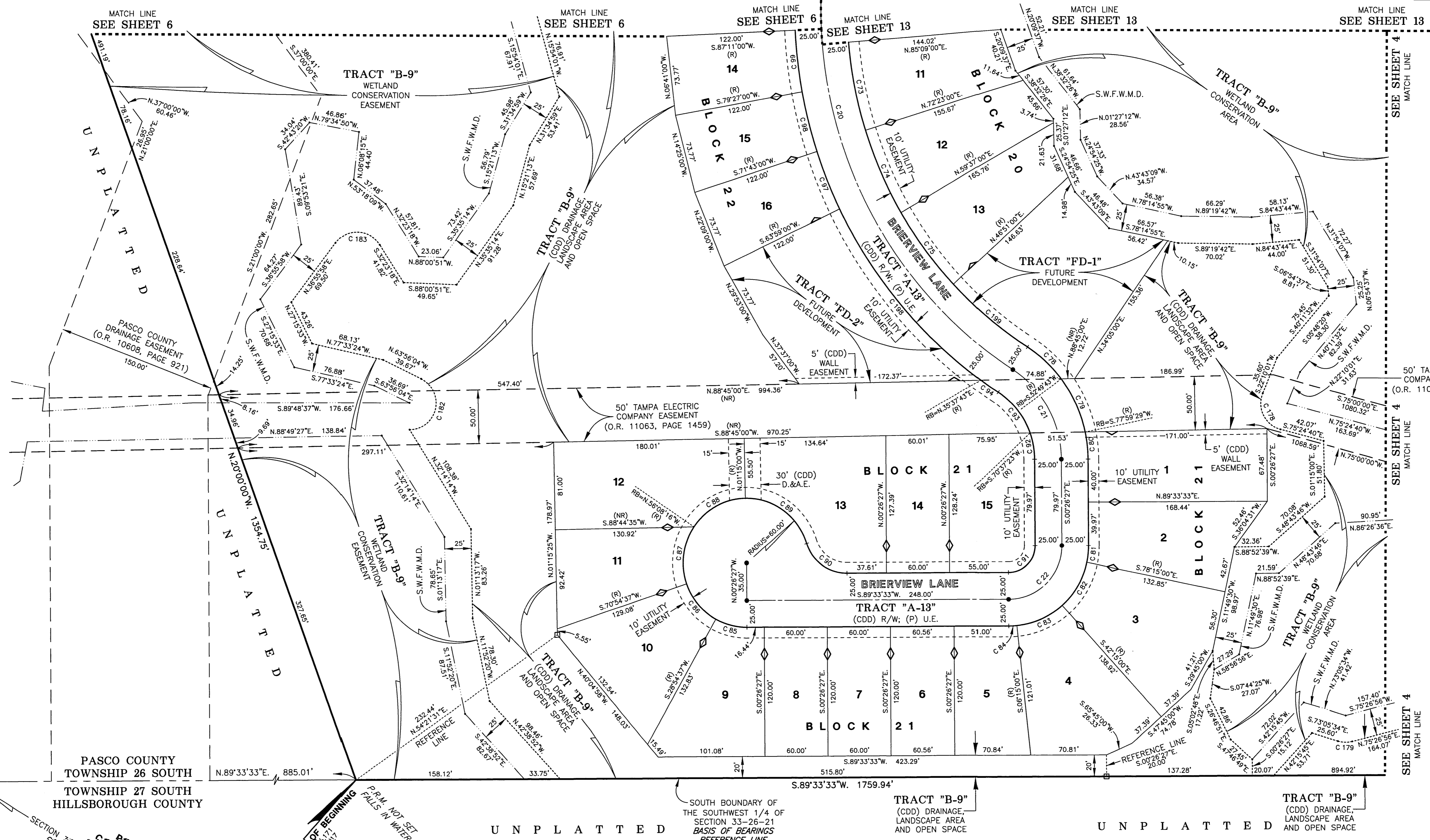
**BASIS OF BEARINGS**  
 The South boundary of the Southwest 1/4 of Section 33, Township 26 South, Range 21 East, Pasco County, Florida, has a Grid bearing of N.89°33'33"E. The Grid Bearings as shown hereon refer to the State Plane Coordinate System, North American Horizontal Datum of 1983 (NAD 83 - 2011 ADJUSTMENT) for the West Zone of Florida.

**AMERRITT, INC.**  
 LAND SURVEYING & MAPPING  
 Certificate of Authorization Number LB 7778  
 3010 W. Azelle Street, Suite 150  
 Tampa, FL 33609  
 PHONE (813) 221-5200



# TWO RIVERS PARCEL E2 PHASE A

LYING IN SECTION 33, TOWNSHIP 26 SOUTH, RANGE 21 EAST, PASCO COUNTY, FLORIDA



PASCO COUNTY  
TOWNSHIP 26 SOUTH  
TOWNSHIP 27 SOUTH  
HILLSBOROUGH COUNTY

POINT OF COMMENCEMENT  
SOUTHWEST CORNER OF  
CERTIFIED CORNER RECORD No. 117435  
2" Iron Pipe (No Identification)

POINT OF BEGINNING  
PRM NOT SET  
FALLS IN WATER  
S. 89° 33' 33" E. 885.01'

UNPLATTED

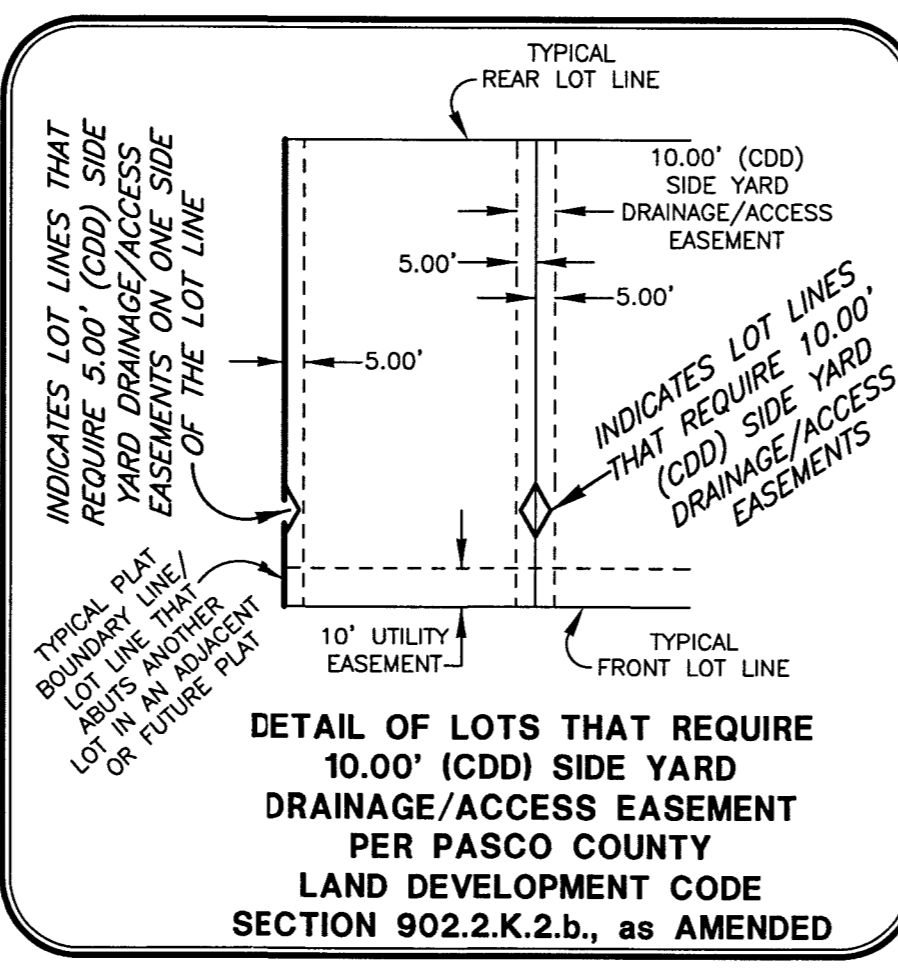
SOUTH BOUNDARY OF THE SOUTHWEST 1/4 OF SECTION 33-26-21  
BASIS OF BEARINGS REFERENCE LINE

TRACT "B-9"  
(CDD) DRAINAGE, LANDSCAPE AREA AND OPEN SPACE

TRACT "B-9"  
(CDD) DRAINAGE, LANDSCAPE AREA AND OPEN SPACE

UNPLATTED

- LEGEND**
1. Symbol ■ indicates Set (P.R.M.) Permanent Reference Monument 4"x4" Concrete Monument LB7778, unless otherwise noted.
  2. Symbol □ indicates Set (P.R.M.) Offset Permanent Reference Monument 4"x4" Concrete Monument LB7778, unless otherwise noted.
  3. Symbol ● indicates (P.C.P.) Permanent Control Point (See Sheet No. 2 for P.C.P. Reference Diagram)
  4. (R) indicates radial line
  5. (NR) indicates non-radial line
  6. (RB) indicates reference bearing
  7. O.R. - Official Records Book
  8. (CDD) - Two Rivers East Community Development District
  9. D.&A.E. - Drainage and Access Easement
  10. R/W - Right-of-way
  11. (P) U.E. - (Public) Utility Easement
  12. S.W.F.W.M.D. - Southwest Florida Water Management District Wetland Line

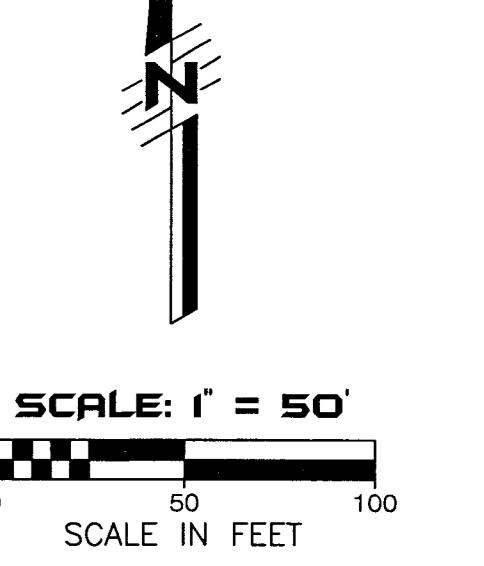


**Wetland Conservation Area Note:**

Wetland Conservation Areas as shown hereon may be subject to certain restrictions found in: Pasco County Land Development Code, Southwest Florida Water Management District (S.W.F.W.M.D.) Environmental Resource Permit, and/or the United States Army Corps of Engineers (C.O.E.) Permit.

**CURVE DATA TABLE**

NO.	RADIUS	DELTA	ARC	CHORD	BEARING
20	400.00	85°57'00"	600.04	545.34	S.14°01'30"E.
21	100.00	56°33'33"	98.71	94.75	S.28°43'14"E.
22	50.00	90°00'00"	78.54	70.71	S.44°33'33"W.
73	375.00	12°46'00"	83.56	83.38	S.11°14'00"E.
74	375.00	12°46'00"	83.56	83.38	S.24°00'00"E.
75	375.00	12°46'00"	83.56	83.38	S.36°46'00"E.
78	125.00	19°49'43"	43.26	43.04	S.47°05'08"E.
79	125.00	25°09'45"	54.90	54.46	S.24°35'24"E.
80	125.00	11°34'04"	28.24	25.19	S.06°13'29"E.
81	75.00	12°11'27"	15.96	15.93	S.05°38'16"W.
82	75.00	36°00'00"	47.12	46.35	S.29°45'00"W.
83	75.00	36°00'00"	47.12	46.35	S.65°45'00"W.
84	75.00	05°48'33"	7.60	7.60	S.86°39'16"W.
85	60.00	29°21'05"	30.74	30.40	N.75°45'55"W.
86	60.00	42°00'00"	43.98	43.00	N.40°05'23"W.
87	60.00	52°57'01"	58.45	53.50	N.07°31'11"E.
88	60.00	54°53'16"	57.48	55.31	N.61°18'22"E.
89	60.00	73°21'05"	76.81	71.67	S.54°34'27"E.
90	40.00	72°32'33"	50.64	47.33	S.54°10'11"E.
91	25.00	90°00'00"	39.27	35.36	N.44°33'33"E.
92	75.00	18°58'10"	24.79	24.67	N.09°54'32"W.
93	75.00	37°37'23"	48.25	48.37	N.38°11'18"W.
94	425.00	02°37'43"	18.50	19.50	S.87°43'40"E.
97	425.00	07°44'00"	57.36	57.32	N.22°09'00"W.
98	425.00	07°44'00"	57.36	57.32	N.14°25'00"W.
99	425.00	07°44'00"	57.36	57.32	N.06°41'00"W.
178	25.00	97°34'41"	42.58	37.61	S.26°37'19"E.
179	25.00	31°27'30"	13.73	13.55	S.88°49'19"E.
182	25.00	153°37'24"	67.03	48.68	N.12°52'38"E.
184	25.00	110°40'44"	48.29	41.13	S.87°43'40"E.
198	425.00	28°21'17"	210.32	208.18	N.40°11'38"W.
199	375.00	13°51'00"	90.65	90.43	S.50°04'30"E.



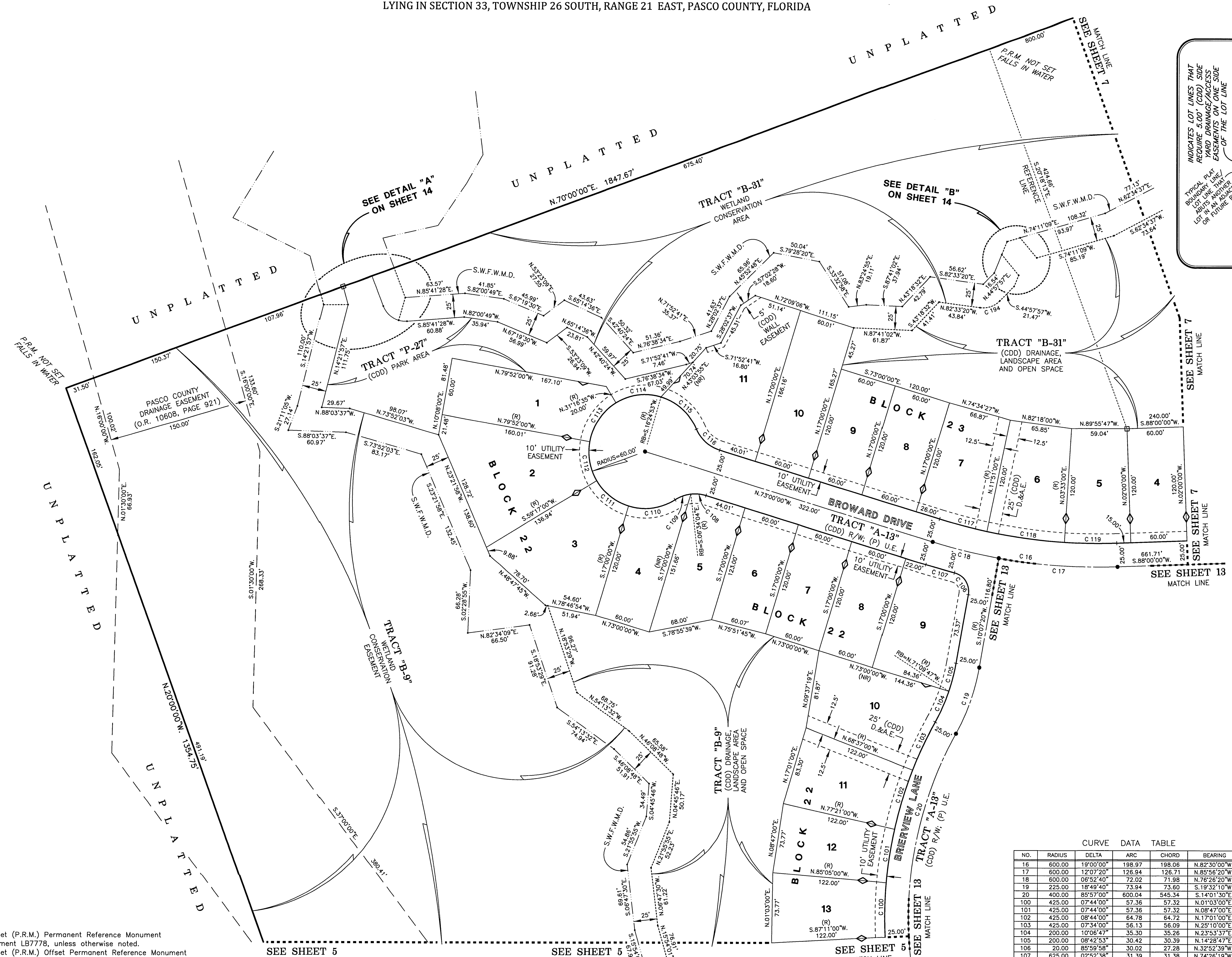
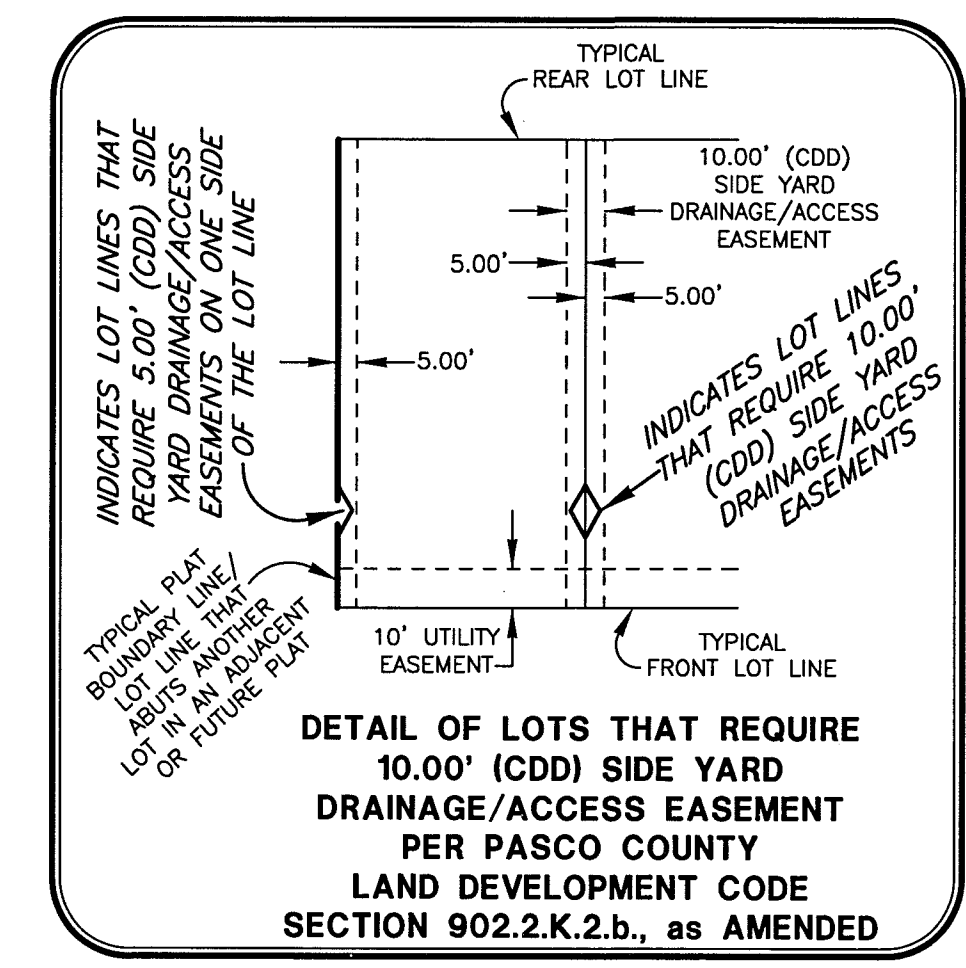
SEE SHEET 3 OF 14 FOR BASIS OF BEARINGS

SEE SHEET 2 OF 14 FOR PARALLEL OFFSET DIMENSIONS NOTE

**AMERRITT, INC.**  
LAND SURVEYING & MAPPING  
Certificate of Authorization Number LB 7778  
3010 W. Azeele Street, Suite 150  
Tampa, FL 33609  
PHONE (813) 221-5200

# TWO RIVERS PARCEL E2 PHASE A

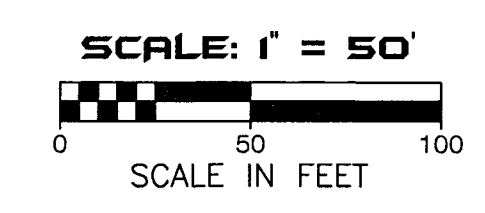
LYING IN SECTION 33, TOWNSHIP 26 SOUTH, RANGE 21 EAST, PASCO COUNTY, FLORIDA



- LEGEND**
1. Symbol ■ indicates Set (P.R.M.) Permanent Reference Monument 4"x4" Concrete Monument LB7778, unless otherwise noted.
  2. Symbol ⊠ indicates Set (P.R.M.) Offset Permanent Reference Monument 4"x4" Concrete Monument LB7778, unless otherwise noted.
  3. Symbol ● indicates (P.C.P.) Permanent Control Point (See Sheet No. 2 for P.C.P. Reference Diagram)
  4. (R) indicates radial line
  5. (NR) indicates non-radial line
  6. (RB) indicates reference bearing
  7. O.R. - Official Records Book
  8. (CDD) - Two Rivers East Community Development District
  9. D.&A.E. - Drainage and Access Easement
  10. R/W - Right-of-way
  11. (P) U.E. - (Public) Utility Easement
  12. S.W.F.W.M.D. - Southwest Florida Water Management District Wetland Line

**Wetland Conservation Area Note:**  
Wetland Conservation Areas as shown hereon may be subject to certain restrictions found in: Pasco County Land Development Code, Southwest Florida Water Management District (S.W.F.W.M.D.) Environmental Resource Permit, and/or the United States Army Corps of Engineers (C.O.E.) Permit.

CURVE DATA TABLE					
NO.	RADIUS	DELTA	ARC	CHORD	BEARING
16	600.00	19°00'00"	198.97	198.06	N.82°30'00"W
17	600.00	12°07'20"	126.94	126.71	N.85°56'20"W
18	600.00	06°52'40"	72.02	71.98	N.76°26'20"W
19	225.00	18°49'40"	73.94	73.60	S.19°32'10"W
20	400.00	85°57'00"	600.04	545.34	S.14°01'30"E
100	425.00	07°44'00"	57.36	57.32	N.01°03'00"E
101	425.00	07°44'00"	57.36	57.32	N.08°47'00"E
102	425.00	08°44'00"	64.78	64.72	N.17°01'00"E
103	425.00	07°34'00"	56.13	56.08	N.25°10'00"E
104	200.00	10°06'47"	35.30	35.26	N.23°53'37"E
105	200.00	08°42'53"	30.42	30.39	N.14°28'47"E
106	20.00	85°58'58"	30.02	27.28	N.32°52'39"W
107	625.00	02°52'38"	31.39	31.38	N.74°26'19"W
108	40.00	23°34'04"	16.45	16.34	N.84°47'02"W
109	40.00	28°53'26"	18.07	17.92	S.70°29'13"W
110	60.00	49°27'30"	51.79	50.20	S.82°16'15"W
111	60.00	42°17'00"	44.28	43.28	N.51°51'30"W
112	60.00	40°51'00"	42.78	41.88	N.10°17'30"W
113	60.00	48°35'25"	50.88	49.37	N.34°25'43"E
114	60.00	47°41'27"	49.94	48.51	N.82°34'09"E
115	60.00	50°02'37"	52.41	50.76	N.84°33'48"E
116	40.00	49°27'30"	34.53	33.47	S.48°16'15"E
117	575.00	05°09'00"	51.68	51.67	S.75°34'30"E
118	575.00	08°18'00"	83.30	83.22	S.82°18'00"E
119	575.00	05°33'00"	55.70	55.68	S.89°13'30"E
194	25.00	52°28'43"	22.90	22.11	S.71°12'18"W



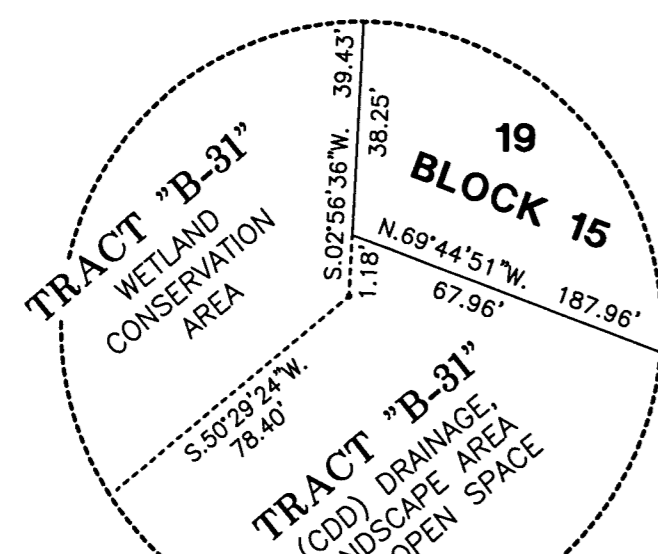
SEE SHEET 3 OF 14 FOR BASIS OF BEARINGS

SEE SHEET 2 OF 14 FOR PARALLEL OFFSET DIMENSIONS NOTE

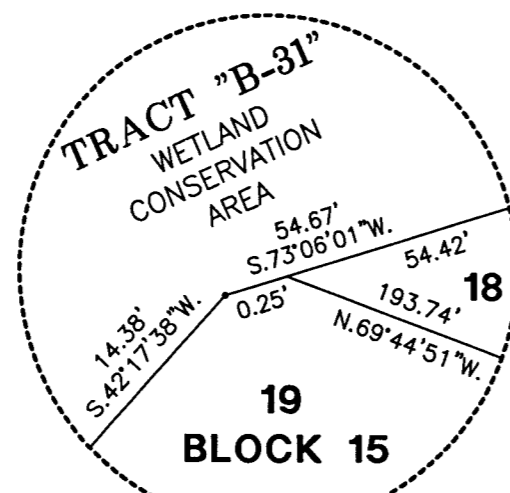
**AMERRITT, INC.**  
LAND SURVEYING & MAPPING  
Certificate of Authorization Number LB 7778  
3010 W. Azalee Street, Suite 150  
Tampa, FL 33609  
PHONE (813) 221-5200

# TWO RIVERS PARCEL E2 PHASE A

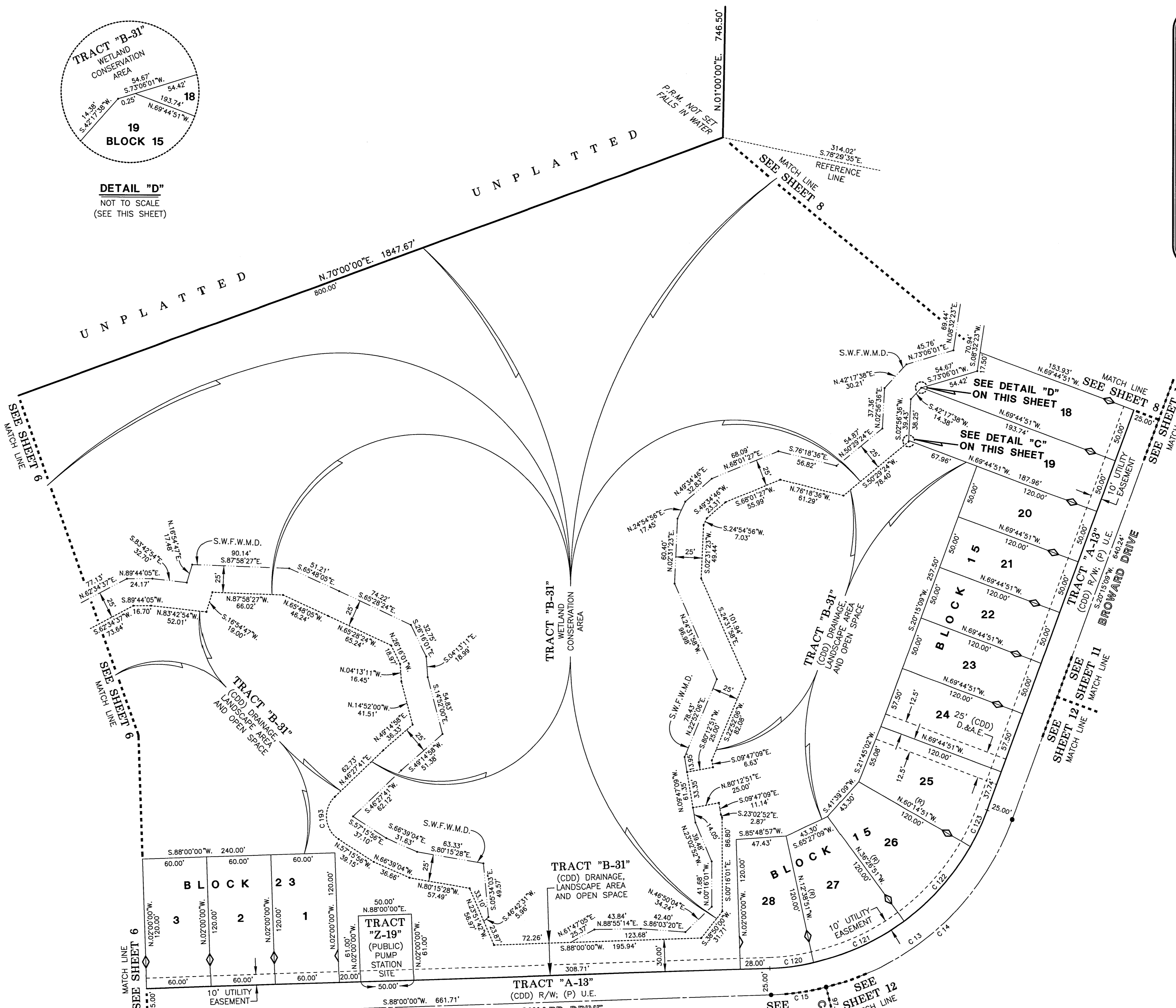
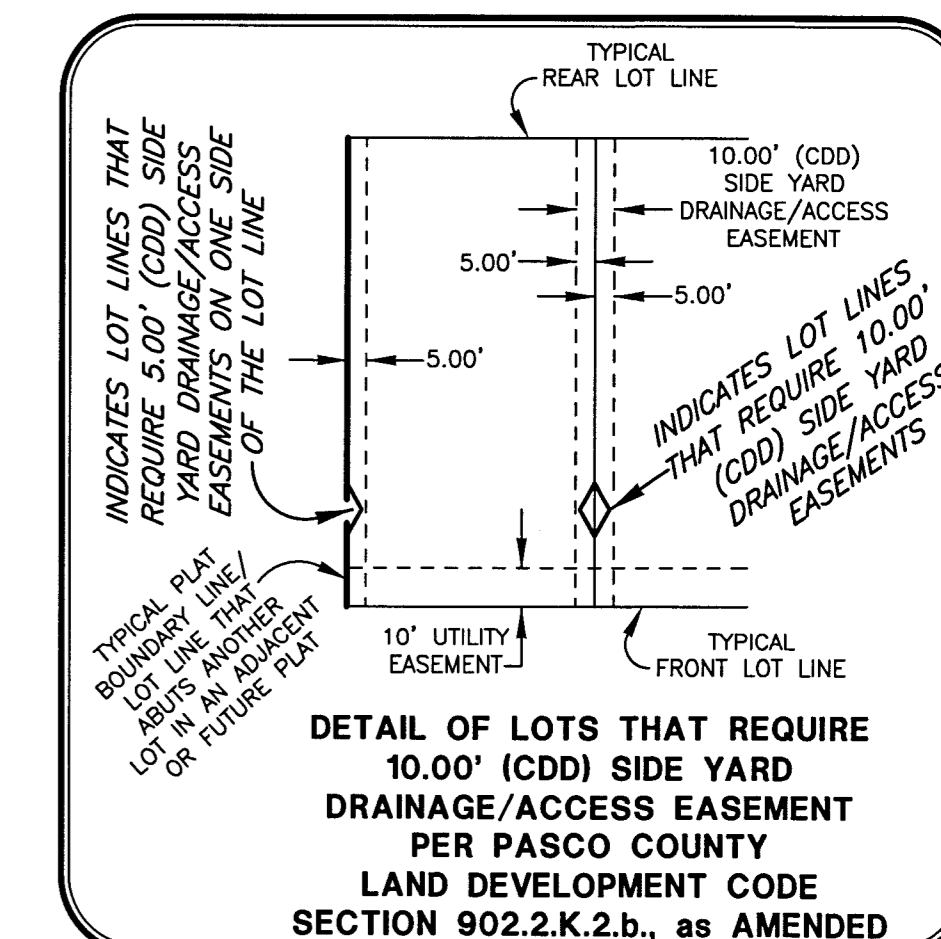
LYING IN SECTION 33, TOWNSHIP 26 SOUTH, RANGE 21 EAST, PASCO COUNTY, FLORIDA



**DETAIL "C"**  
NOT TO SCALE  
(SEE THIS SHEET)



**DETAIL "D"**  
NOT TO SCALE  
(SEE THIS SHEET)

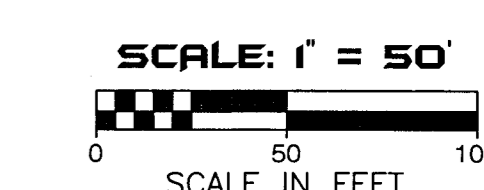


- LEGEND**
1. Symbol  $\blacksquare$  indicates Set (P.R.M.) Permanent Reference Monument 4"x4" Concrete Monument LB7778, unless otherwise noted.
  2. Symbol  $\square$  indicates Set (P.R.M.) Offset Permanent Reference Monument 4"x4" Concrete Monument LB7778, unless otherwise noted.
  3. Symbol  $\bullet$  indicates (P.C.P.) Permanent Control Point (See Sheet No. 2 for P.C.P. Reference Diagram)
  4. (R) indicates radial line
  5. (NR) indicates non-radial line
  6. (RB) indicates reference bearing
  7. O.R. - Official Records Book
  8. (CDD) - Two Rivers East Community Development District
  9. D.&A.E. - Drainage and Access Easement
  10. R/W - Right-of-way
  11. (P) U.E. - (Public) Utility Easement
  12. S.W.F.W.M.D. - Southwest Florida Water Management District Wetland Line

**Wetland Conservation Area Note:**  
Wetland Conservation Areas as shown hereon may be subject to certain restrictions found in: Pasco County Land Development Code, Southwest Florida Water Management District (S.W.F.W.M.D.) Environmental Resource Permit, and/or the United States Army Corps of Engineers (C.O.E.) Permit.

CURVE DATA TABLE

NO.	RADIUS	DELTA	ARC	CHORD	BEARING
13	250.00	67°44'51"	295.60	278.68	S.54°07'34"W.
14	250.00	55°38'51"	242.81	233.38	S.48°04'34"W.
15	250.00	12°06'00"	52.80	52.70	S.81°57'00"W.
120	225.00	10°38'51"	41.81	41.75	N.82°40'34"E.
121	225.00	23°48'00"	93.46	92.79	N.65°27'00"E.
122	225.00	23°48'00"	93.46	92.79	N.41°39'09"E.
123	225.00	09°30'00"	37.31	37.26	N.25°00'09"E.
193	25.00	103°43'37"	45.26	39.33	N.05°24'08"W.

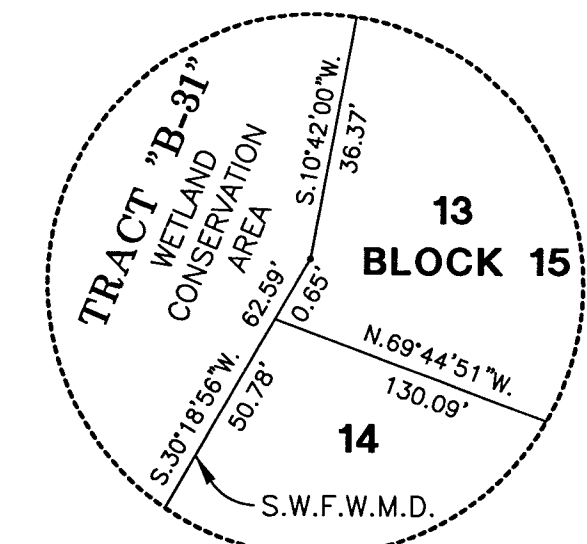
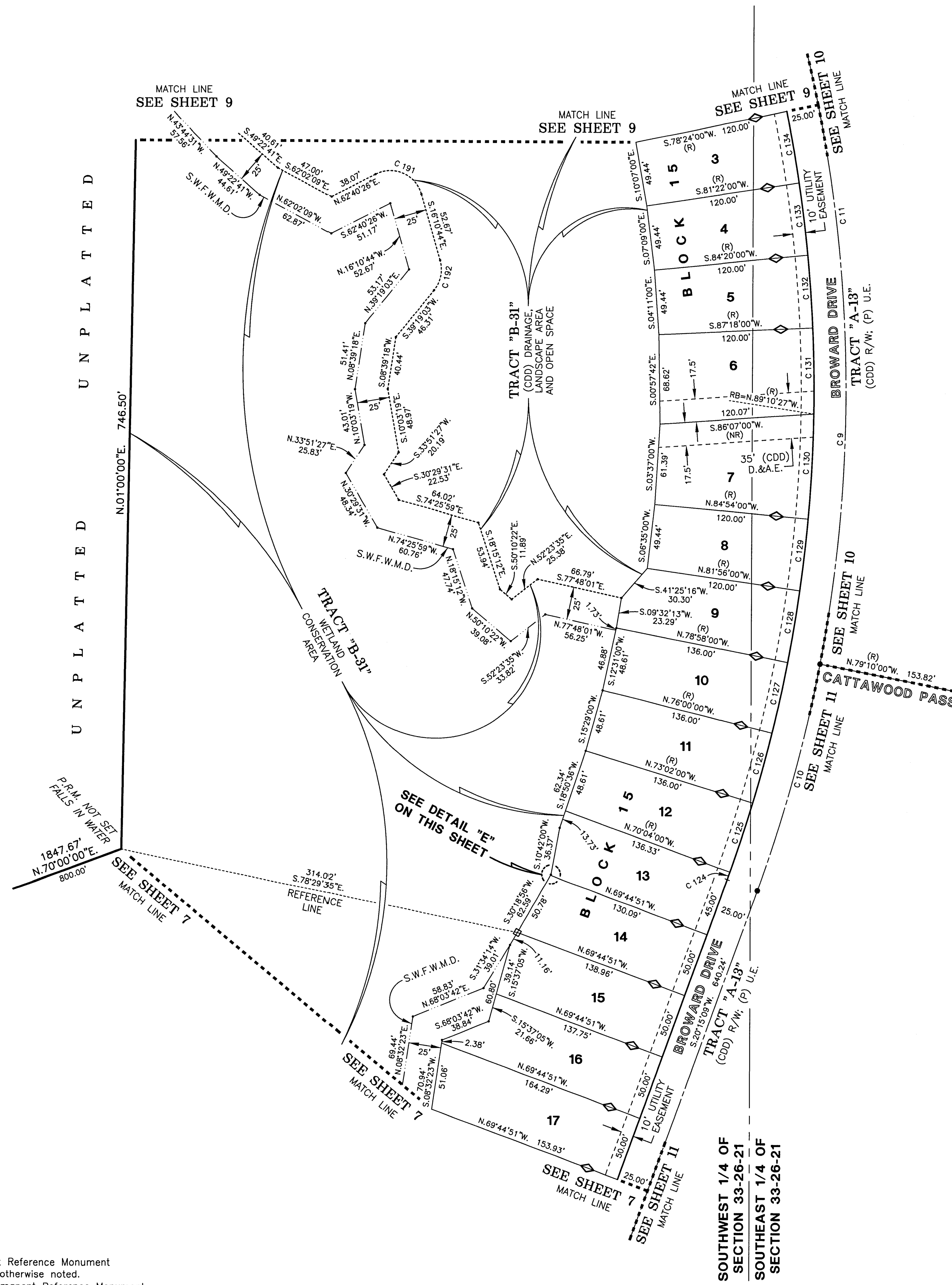


SEE SHEET 3 OF 14 FOR BASIS OF BEARINGS

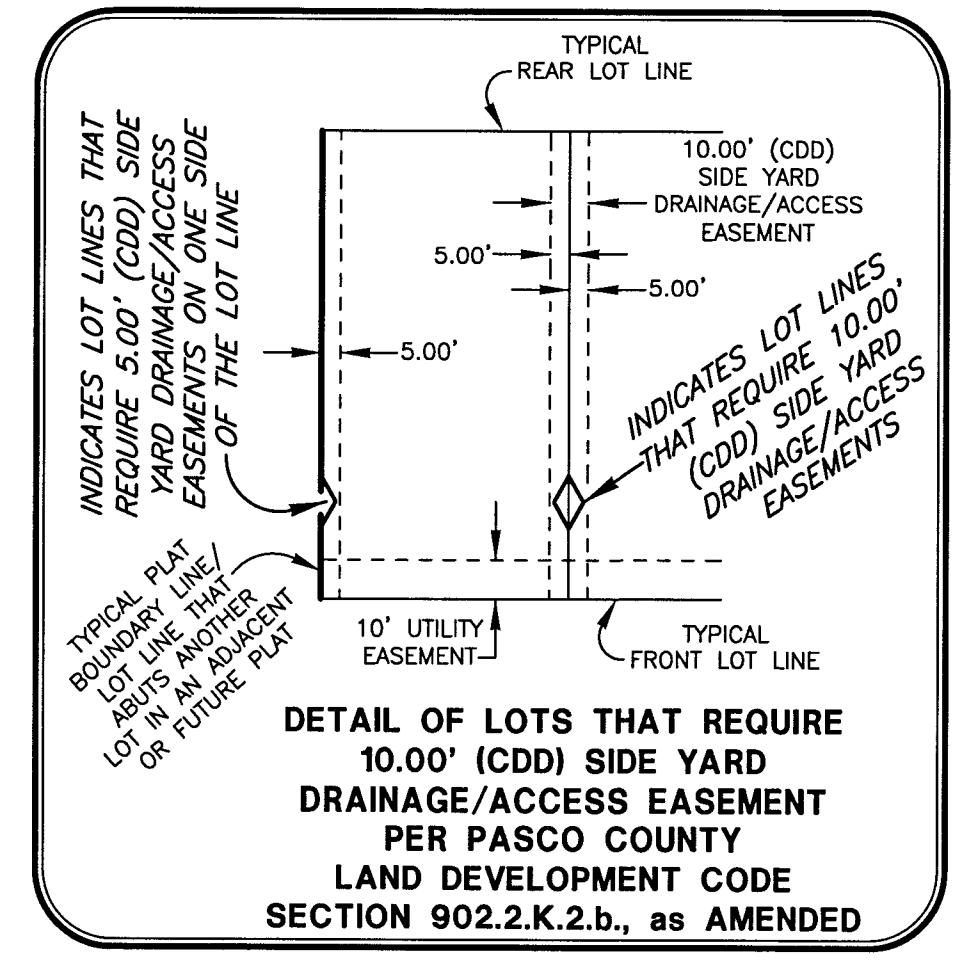
SEE SHEET 2 OF 14 FOR PARALLEL OFFSET DIMENSIONS NOTE

**AMERRITT, INC.**  
LAND SURVEYING & MAPPING  
Certificate of Authorization Number LB 7778  
3010 W. Azeele Street, Suite 150  
Tampa, FL 33609  
PHONE (813) 221-9200

**TWO RIVERS PARCEL E2 PHASE A**  
 LYING IN SECTION 33, TOWNSHIP 26 SOUTH, RANGE 21 EAST, PASCO COUNTY, FLORIDA



**DETAIL "E"**  
 NOT TO SCALE  
 (SEE THIS SHEET)

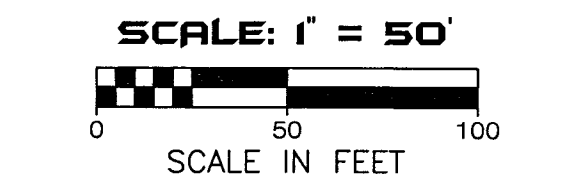


- LEGEND**
- Symbol indicates Set (P.R.M.) Permanent Reference Monument 4"x4" Concrete Monument LB7778, unless otherwise noted.
  - Symbol indicates Set (P.R.M.) Offset Permanent Reference Monument 4"x4" Concrete Monument LB7778, unless otherwise noted.
  - Symbol indicates (P.C.P.) Permanent Control Point (See Sheet No. 2 for P.C.P. Reference Diagram)
  - (R) indicates radial line
  - (NR) indicates non-radial line
  - (RB) indicates reference bearing
  - O.R. - Official Records Book
  - (CDD) - Two Rivers East Community Development District
  - D.&A.E. - Drainage and Access Easement
  - R/W - Right-of-way
  - (P) U.E. - (Public) Utility Easement
  - S.W.F.W.M.D. - Southwest Florida Water Management District Wetland Line

**Wetland Conservation Area Note:**  
 Wetland Conservation Areas as shown hereon may be subject to certain restrictions found in: Pasco County Land Development Code, Southwest Florida Water Management District (S.W.F.W.M.D.) Environmental Resource Permit, and/or the United States Army Corps of Engineers (C.O.E.) Permit.

**CURVE DATA TABLE**

NO.	RADIUS	DELTA	ARC	CHORD	BEARING
9	1100.00	59°20'18"	1139.21	1088.98	S.09°25'00"E.
10	1100.00	09°25'09"	180.83	180.63	N.15°32'34"E.
11	1100.00	35°44'00"	686.03	674.97	N.07°02'00"W.
12	1075.00	00°19'09"	5.99	5.99	N.20°05'34"E.
125	1075.00	02°58'00"	55.66	55.66	N.18°27'00"E.
126	1075.00	02°58'00"	55.66	55.66	N.15°29'00"E.
127	1075.00	02°58'00"	55.66	55.66	N.12°31'00"E.
128	1075.00	02°58'00"	55.66	55.66	N.09°33'00"E.
129	1075.00	02°58'00"	55.66	55.66	N.06°35'00"E.
130	1075.00	04°16'27"	80.19	80.17	N.02°57'47"E.
131	1075.00	03°31'33"	66.15	66.14	N.00°56'13"W.
132	1075.00	02°58'00"	55.66	55.66	N.04°11'00"W.
133	1075.00	02°58'00"	55.66	55.66	N.07°09'00"W.
134	1075.00	02°58'00"	55.66	55.66	N.10°07'00"W.
191	25.00	101°08'50"	44.13	38.62	S.66°45'09"E.
192	25.00	55°29'47"	24.21	23.28	S.11°34'10"W.



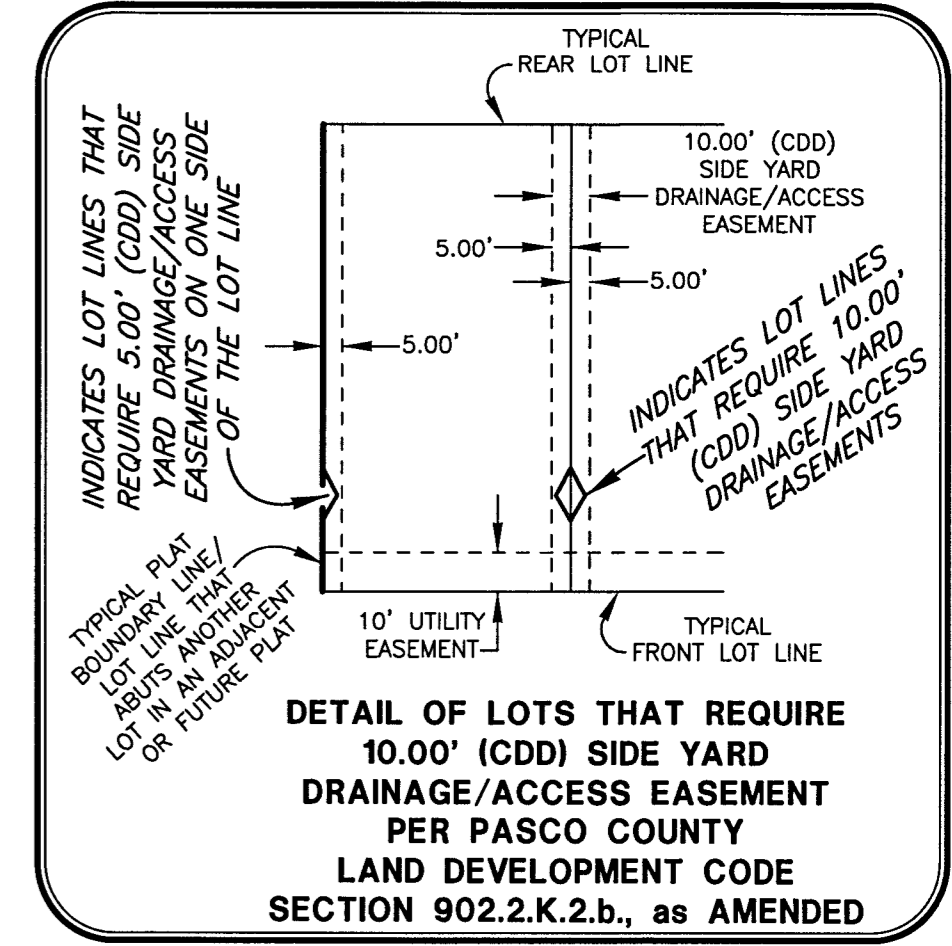
SEE SHEET 3 OF 14 FOR BASIS OF BEARINGS

SEE SHEET 2 OF 14 FOR PARALLEL OFFSET DIMENSIONS NOTE

**AMERRITT, INC.**  
 LAND SURVEYING & MAPPING  
 Certificate of Authorization Number LB 7778  
 3010 W. Azeele Street, Suite 150  
 Tampa, FL 33609  
 PHONE (813) 221-5200

**TWO RIVERS PARCEL E2 PHASE A**  
 LYING IN SECTION 33, TOWNSHIP 26 SOUTH, RANGE 21 EAST, PASCO COUNTY, FLORIDA

NO.	RADIUS	DELTA	ARC	CHORD	BEARING
1	2285.00	02°33'54"	102.30	102.29	N.32°00'01"W.
2	1100.00	07°05'17"	30.40	27.56	N.74°15'42"W.
3	2190.00	03°11'32"	122.02	122.00	N.27°26'30"W.
4	2150.00	35°25'35"	1329.36	1308.28	S.43°31'20"E.
7	400.00	19°04'20"	133.15	132.53	S.55°33'50"W.
8	2260.00	09°27'07"	372.83	372.41	S.34°21'35"E.
9	1100.00	59°20'18"	1139.21	1088.98	S.09°25'00"E.
11	1100.00	35°44'00"	686.03	674.97	N.07°02'00"W.
12	1100.00	14°11'09"	272.35	271.65	N.31°59'39"W.
27	2150.00	19°28'04"	730.52	727.01	S.35°32'35"E.
28	2150.00	01°30'37"	56.67	56.67	S.46°01'55"E.
29	2150.00	01°24'20"	52.74	52.74	S.47°29'23"E.
30	2150.00	13°02'35"	489.43	488.37	S.54°42'51"E.
31	25.00	83°02'47"	36.24	33.15	N.89°42'57"W.
32	450.00	14°47'50"	111.05	110.74	S.56°09'35"W.
33	20.00	85°57'49"	30.01	27.27	S.20°34'39"W.
34	1125.00	00°56'19"	18.43	18.43	S.21°56'10"E.
35	1125.00	02°32'00"	49.74	49.74	S.20°12'00"E.
36	1125.00	02°32'00"	49.74	49.74	S.17°40'00"E.
37	1125.00	02°32'00"	49.74	49.74	S.15°08'00"E.
135	1075.00	02°58'00"	55.66	55.66	N.13°05'00"W.
136	1075.00	02°58'00"	55.66	55.66	N.16°03'00"W.
137	1075.00	06°55'15"	129.85	129.77	N.20°59'37"W.
138	1075.00	14°37'54"	274.53	273.78	N.31°46'12"W.
139	1075.00	21°33'09"	404.37	401.99	N.28°18'35"W.
140	2285.00	03°56'56"	157.48	157.45	N.37°06'41"W.
143	2190.00	04°30'04"	172.05	172.00	S.28°05'46"E.
144	2190.00	00°39'16"	25.01	25.01	S.29°21'54"E.
145	2190.00	00°39'16"	25.02	25.02	S.30°10'10"E.
146	20.00	93°01'49"	32.47	29.02	S.15°40'45"W.
147	2235.00	08°14'59"	321.81	321.53	S.34°57'39"E.
148	1125.00	11°40'21"	229.19	228.79	S.33°14'58"E.
149	20.00	89°28'00"	31.23	28.15	S.72°08'48"E.
150	370.00	12°35'55"	81.36	81.19	N.56°49'15"E.
151	25.00	95°47'54"	41.80	37.10	N.02°37'20"E.
184	2315.00	03°33'39"	143.87	143.85	S.37°18'20"E.
186	2315.00	03°04'21"	124.14	124.12	S.37°32'59"E.
187	1045.00	14°37'54"	266.86	266.14	S.31°46'12"E.
188	1045.00	03°54'23"	71.25	71.24	S.37°07'57"E.
189	1045.00	10°43'31"	195.62	195.33	S.29°49'00"E.
190	25.00	46°59'50"	20.51	19.94	S.82°33'17"W.

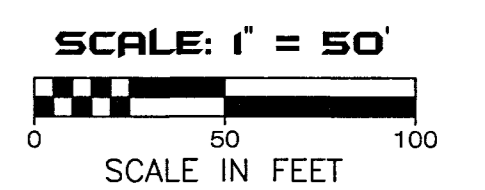


SEE DETAIL "F" ON SHEET 14

NORTHWEST 1/4 OF SECTION 33-26-21  
 SOUTHWEST 1/4 OF SECTION 33-26-21  
 NORTHEAST 1/4 OF SECTION 33-26-21  
 SOUTHEAST 1/4 OF SECTION 33-26-21

**Wetland Conservation Area Note:**  
 Wetland Conservation Areas as shown hereon may be subject to certain restrictions found in: Pasco County Land Development Code, Southwest Florida Water Management District (S.W.F.W.M.D.) Environmental Resource Permit, and/or the United States Army Corps of Engineers (C.O.E.) Permit.

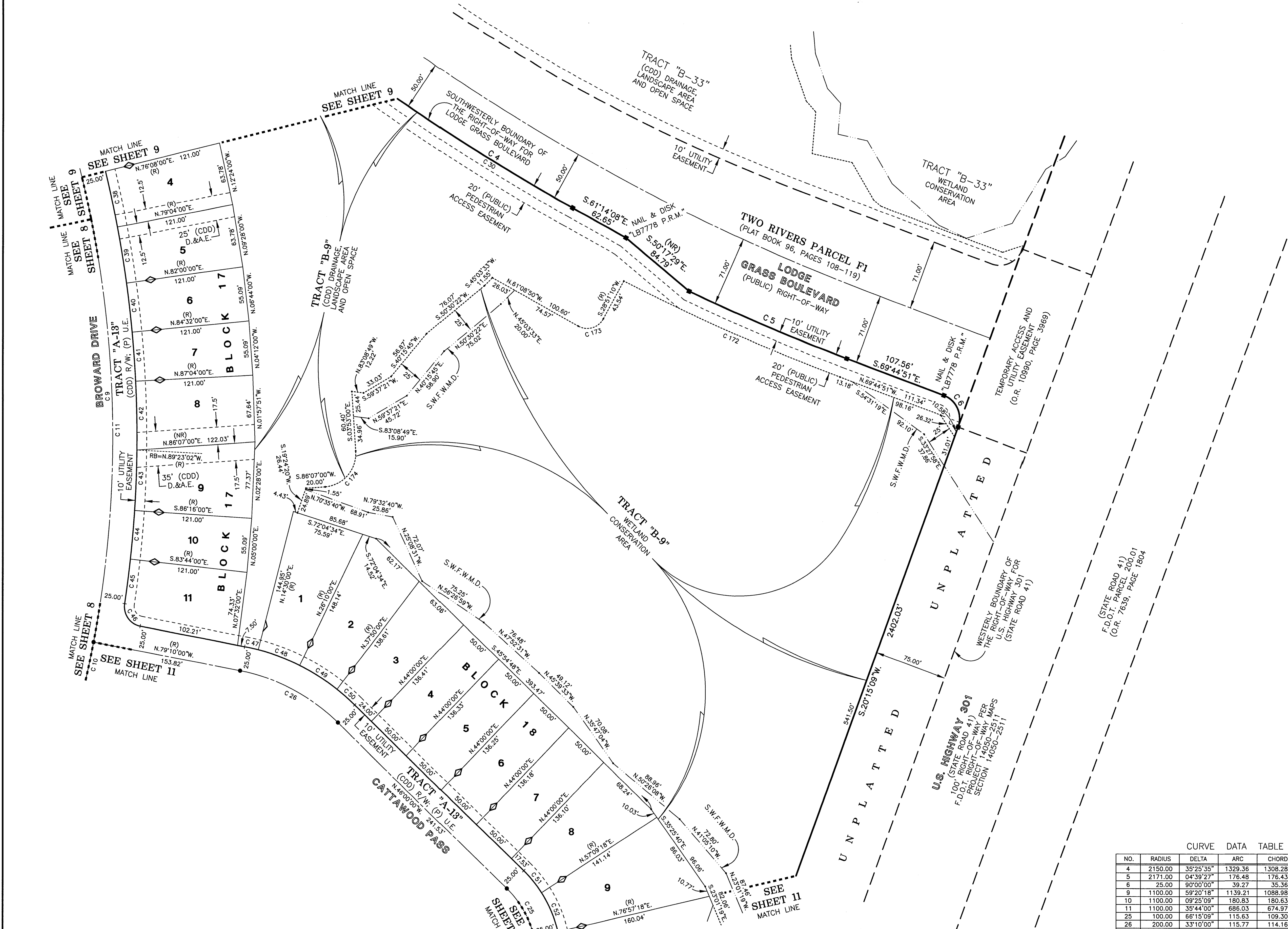
- LEGEND**
- Symbol ■ indicates Set (P.R.M.) Permanent Reference Monument 4"x4" Concrete Monument LB7778, unless otherwise noted.
  - Symbol □ indicates Set (P.R.M.) Offset Permanent Reference Monument 4"x4" Concrete Monument LB7778, unless otherwise noted.
  - Symbol ● indicates (P.C.P.) Permanent Control Point (See Sheet No. 2 for P.C.P. Reference Diagram)
  - (R) indicates radial line
  - (NR) indicates non-radial line
  - (RB) indicates reference bearing
  - (O.R.) - Official Records Book
  - (CDD) - Two Rivers East Community Development District
  - D.&A.E. - Drainage and Access Easement
  - R/W - Right-of-way
  - (P) U.E. - (Public) Utility Easement
  - S.W.F.W.M.D. - Southwest Florida Water Management District Wetland Line



SEE SHEET 3 OF 14 FOR BASIS OF BEARINGS  
 SEE SHEET 2 OF 14 FOR PARALLEL OFFSET DIMENSIONS NOTE

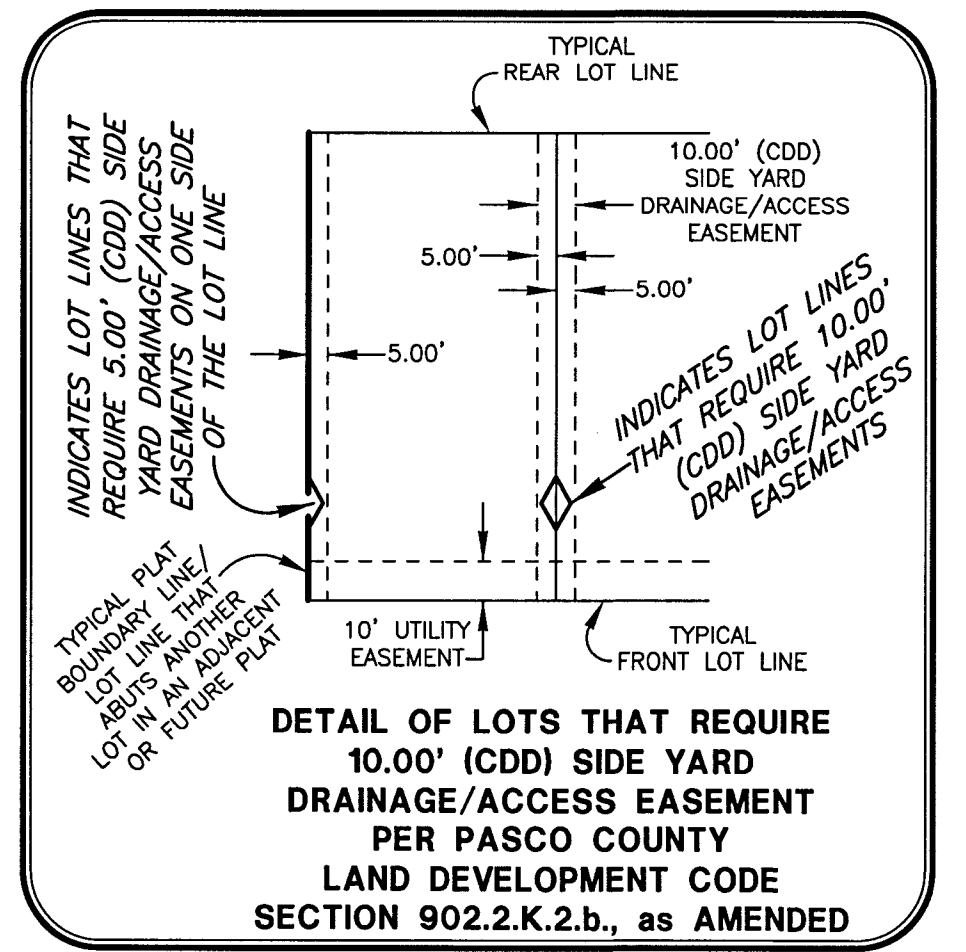
**AMERRITT, INC.**  
 LAND SURVEYING & MAPPING  
 Certificate of Authorization Number LB 7778  
 3010 W. Azalea Street, Suite 150  
 Tampa, FL 33609  
 PHONE (813) 221-5200

**TWO RIVERS PARCEL E2 PHASE A**  
LYING IN SECTION 33, TOWNSHIP 26 SOUTH, RANGE 21 EAST, PASCO COUNTY, FLORIDA



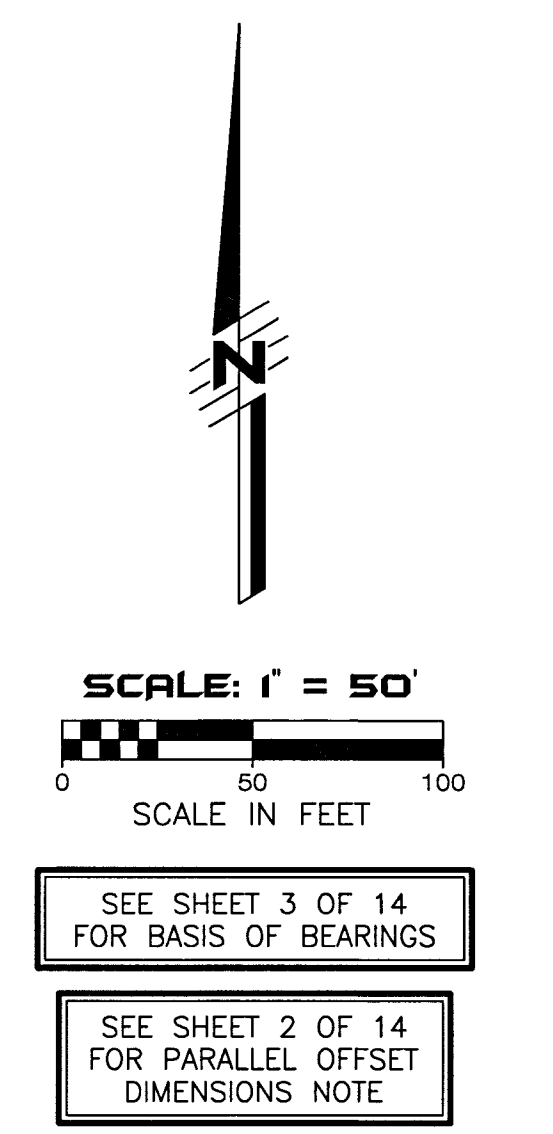
- LEGEND**
- Symbol ■ indicates Set (P.R.M.) Permanent Reference Monument  
4"x4" Concrete Monument LB7778, unless otherwise noted.
  - Symbol ⊕ indicates Set (P.R.M.) Offset Permanent Reference Monument  
4"x4" Concrete Monument LB7778, unless otherwise noted.
  - Symbol ● indicates (P.C.P.) Permanent Control Point  
(See Sheet No. 2 for P.C.P. Reference Diagram)
  - (R) indicates radial line
  - (NR) indicates non-radial line
  - (RB) indicates reference bearing
  - O.R. - Official Records Book
  - (CDD) - Two Rivers East Community Development District
  - D.&A.E. - Drainage and Access Easement
  - R/W - Right-of-way
  - (P) U.E. - (Public) Utility Easement
  - S.W.F.W.M.D. - Southwest Florida Water Management District Wetland Line
  - F.D.O.T. - Florida Department of Transportation

**Wetland Conservation Area Note:**  
Wetland Conservation Areas as shown hereon may be subject to certain restrictions found in: Pasco County Land Development Code, Southwest Florida Water Management District (S.W.F.W.M.D.) Environmental Resource Permit, and/or the United States Army Corps of Engineers (C.O.E.) Permit.



**CURVE DATA TABLE**

NO.	RADIUS	DELTA	ARC	CHORD	BEARING
4	2150.00	35°25'35"	1329.36	1308.28	S.43°31'20"E.
5	2171.00	04°39'27"	176.48	176.43	S.67°25'08"E.
6	25.00	90°00'00"	39.27	35.36	S.24°44'52"E.
9	1100.00	59°20'18"	1139.21	1088.98	S.09°25'00"E.
10	1100.00	09°25'09"	180.83	180.63	N.15°32'34"E.
11	1125.00	02°32'00"	49.74	49.74	S.04°12'00"E.
25	100.00	66°15'09"	115.63	109.30	N.12°52'26"W.
26	200.00	33°10'00"	115.77	114.16	N.62°35'00"W.
30	2150.00	13°02'35"	489.43	488.37	S.54°42'51"E.
38	1125.00	02°56'00"	57.60	57.59	S.12°24'00"E.
39	1125.00	02°56'00"	57.60	57.59	S.09°28'00"E.
40	1125.00	02°32'00"	49.74	49.74	S.06°44'00"E.
41	1125.00	02°32'00"	49.74	49.74	S.04°12'00"E.
42	1125.00	03°32'58"	69.69	69.68	S.01°09'31"E.
43	1125.00	03°07'02"	61.21	61.20	S.02°10'29"W.
44	1125.00	02°32'00"	49.74	49.74	S.05°00'00"W.
45	1125.00	02°18'51"	45.44	45.44	S.07°25'26"W.
46	20.00	87°44'51"	30.63	27.72	S.35°17'34"E.
47	225.00	03°40'00"	14.40	14.40	S.77°20'00"E.
48	225.00	11°40'00"	45.81	45.74	S.69°40'00"E.
49	225.00	11°40'00"	45.81	45.74	S.58°00'00"E.
50	225.00	06°10'00"	24.22	24.20	S.49°05'00"E.
51	125.00	13°09'18"	28.70	28.64	S.39°25'21"E.
52	125.00	19°48'00"	43.20	42.98	S.22°56'42"E.
172	2191.00	06°22'09"	243.56	243.44	N.66°33'46"W.
173	19.00	90°00'00"	29.85	26.87	S.73°51'10"W.
174	34.00	90°00'00"	53.41	48.08	S.41°07'00"W.

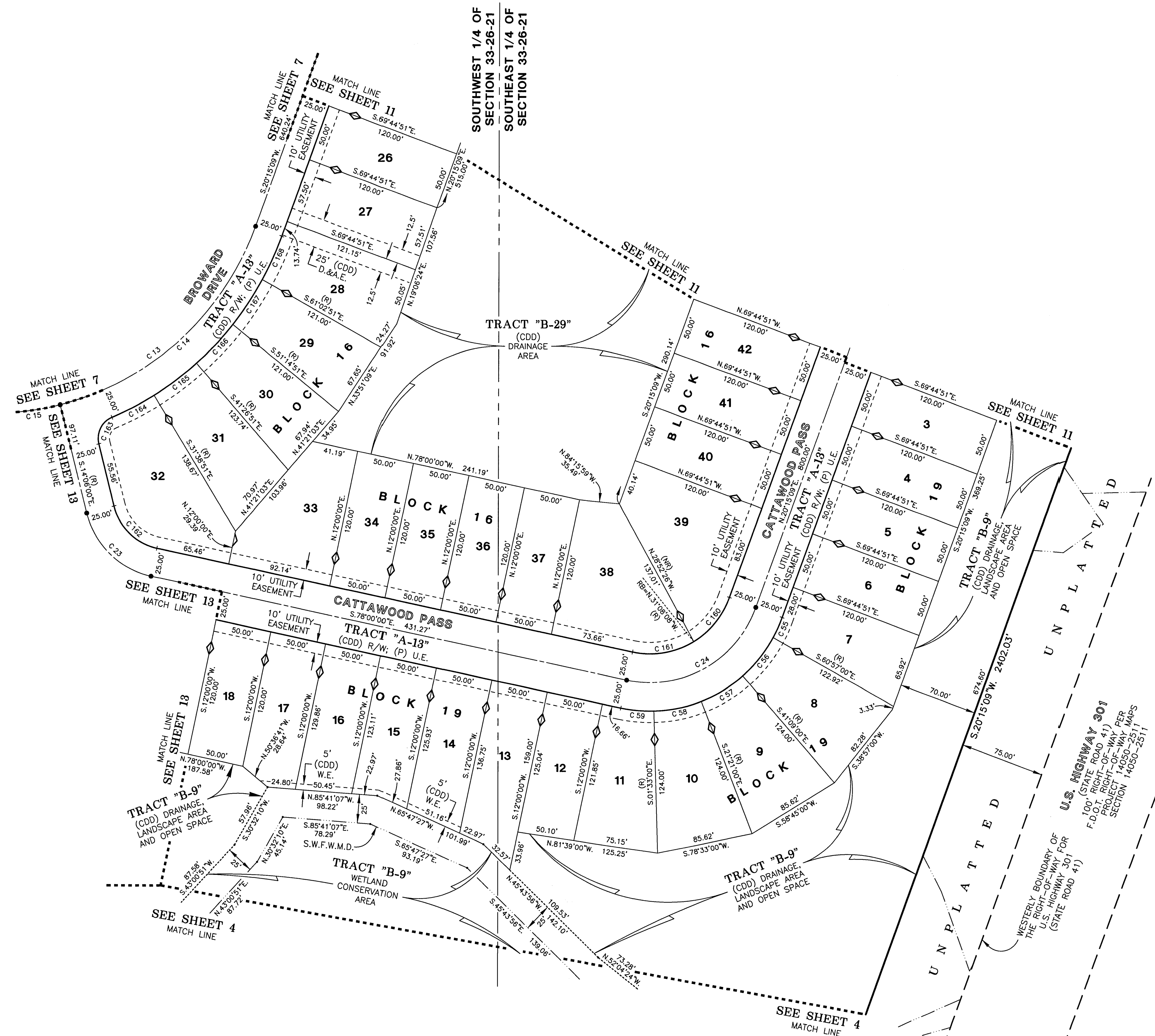
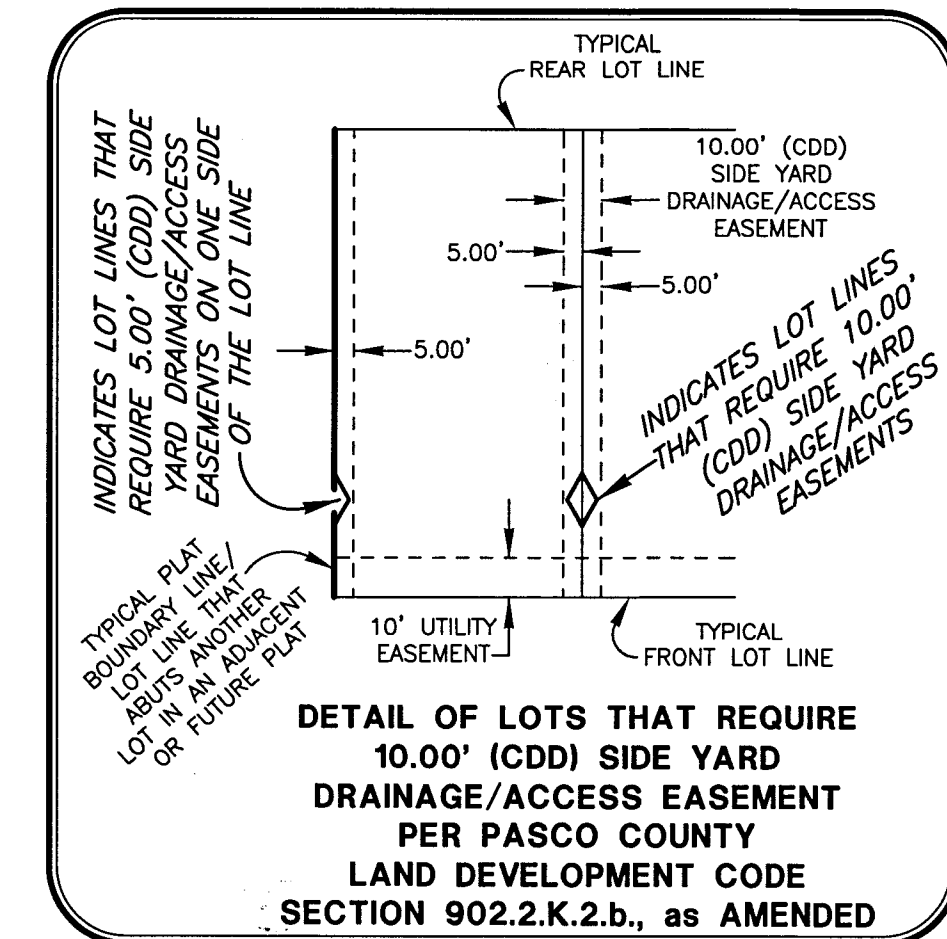


SEE SHEET 3 OF 14 FOR BASIS OF BEARINGS  
SEE SHEET 2 OF 14 FOR PARALLEL OFFSET DIMENSIONS NOTE

**AMERRITT, INC.**  
LAND SURVEYING & MAPPING  
Certificate of Authorization Number LB 7778  
3010 W. Azalee Street, Suite 150  
Tampa, FL 33609  
PHONE (813) 231-5200



**TWO RIVERS PARCEL E2 PHASE A**  
 LYING IN SECTION 33, TOWNSHIP 26 SOUTH, RANGE 21 EAST, PASCO COUNTY, FLORIDA



**LEGEND**

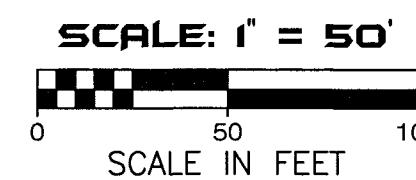
1. Symbol ■ indicates Set (P.R.M.) Permanent Reference Monument  
4"x4" Concrete Monument LB7778, unless otherwise noted.
2. Symbol □ indicates Set (P.R.M.) Offset Permanent Reference Monument  
4"x4" Concrete Monument LB7778, unless otherwise noted.
3. Symbol ● indicates (P.C.P.) Permanent Control Point  
(See Sheet No. 2 for P.C.P. Reference Diagram)
4. (R) indicates radial line
5. (NR) indicates non-radial line
6. (RB) indicates reference bearing
7. O.R. - Official Records Book
8. (CDD) - Two Rivers East Community Development District
9. D.&A.E. - Drainage and Access Easement
10. R/W - Right-of-way
11. (P) - Wall Easement
12. (P) U.E. - (Public) Utility Easement
13. S.W.F.W.M.D. - Southwest Florida Water Management District Wetland Line
14. F.D.O.T. - Florida Department of Transportation

**Wetland Conservation Area Note:**

Wetland Conservation Areas as shown hereon may be subject to certain restrictions found in: Pasco County Land Development Code, Southwest Florida Water Management District (S.W.F.W.M.D.) Environmental Resource Permit, and/or the United States Army Corps of Engineers (C.O.E.) Permit.

**CURVE DATA TABLE**

NO.	RADIUS	DELTA	ARC	CHORD	BEARING
13	250.00	67°44'51"	295.60	278.68	S.54°07'34"W.
14	250.00	55°38'51"	242.81	233.38	S.48°04'34"W.
15	250.00	12°06'00"	52.80	52.70	S.81°57'00"W.
23	75.00	63°54'00"	83.64	79.38	S.46°03'00"E.
24	100.00	81°44'51"	142.68	130.88	N.61°07'34"E.
55	125.00	08°47'51"	19.19	19.17	S.24°39'04"W.
56	125.00	19°48'00"	43.20	42.98	S.38°57'00"W.
57	125.00	19°48'00"	43.20	42.98	S.58°45'00"W.
58	125.00	19°48'00"	43.20	42.98	S.78°33'00"W.
59	125.00	13°33'00"	29.56	29.49	N.84°46'30"W.
160	75.00	38°36'43"	50.54	49.59	S.39°33'30"W.
161	75.00	43°08'08"	56.46	55.14	S.80°25'56"W.
162	50.00	63°54'00"	55.76	52.92	N.46°03'00"W.
163	20.00	81°13'33"	28.35	26.04	N.26°30'46"E.
164	275.00	08°46'24"	42.11	42.07	N.62°44'21"E.
165	275.00	09°48'00"	47.04	46.98	N.53°27'09"E.
166	275.00	09°48'00"	47.04	46.98	N.43°39'09"E.
167	275.00	09°48'00"	47.04	46.98	N.33°51'09"E.
168	275.00	08°42'00"	41.76	41.72	N.24°38'09"E.

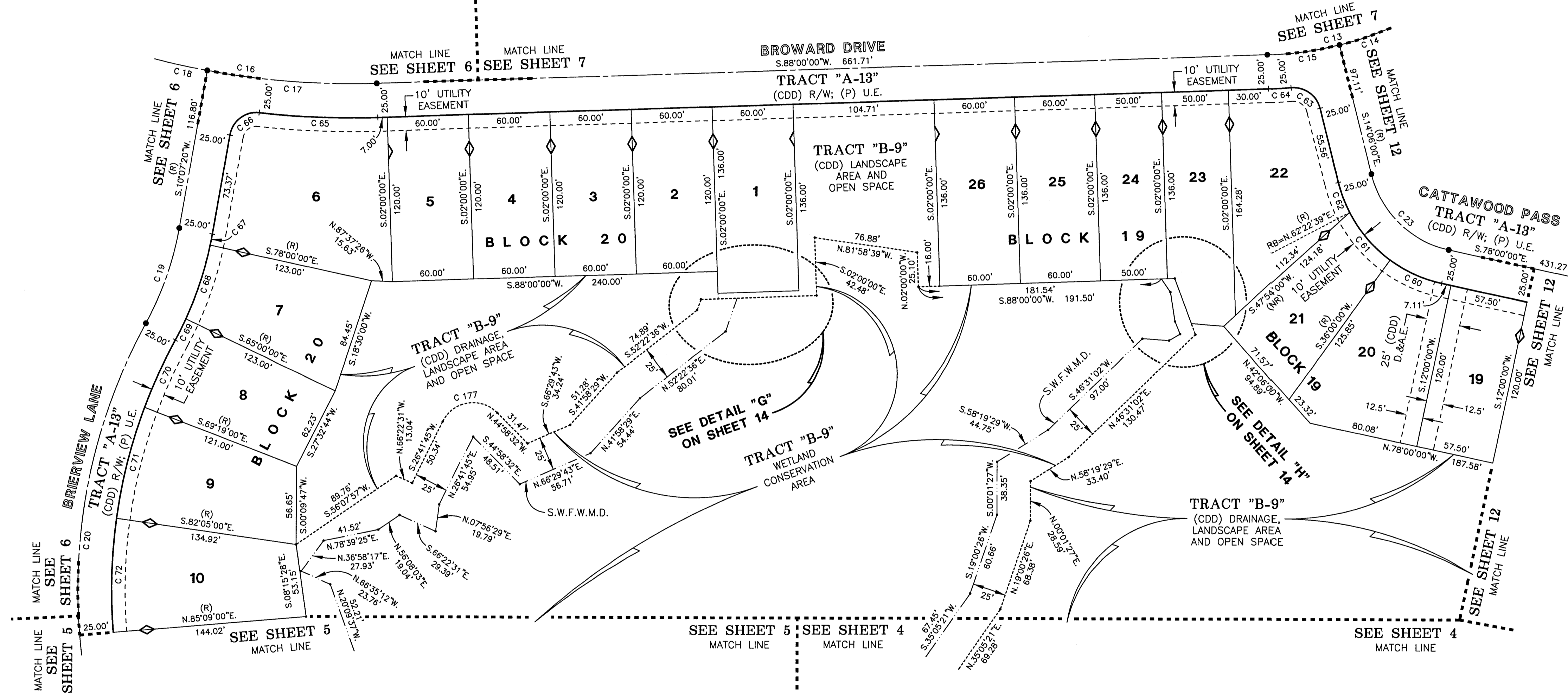
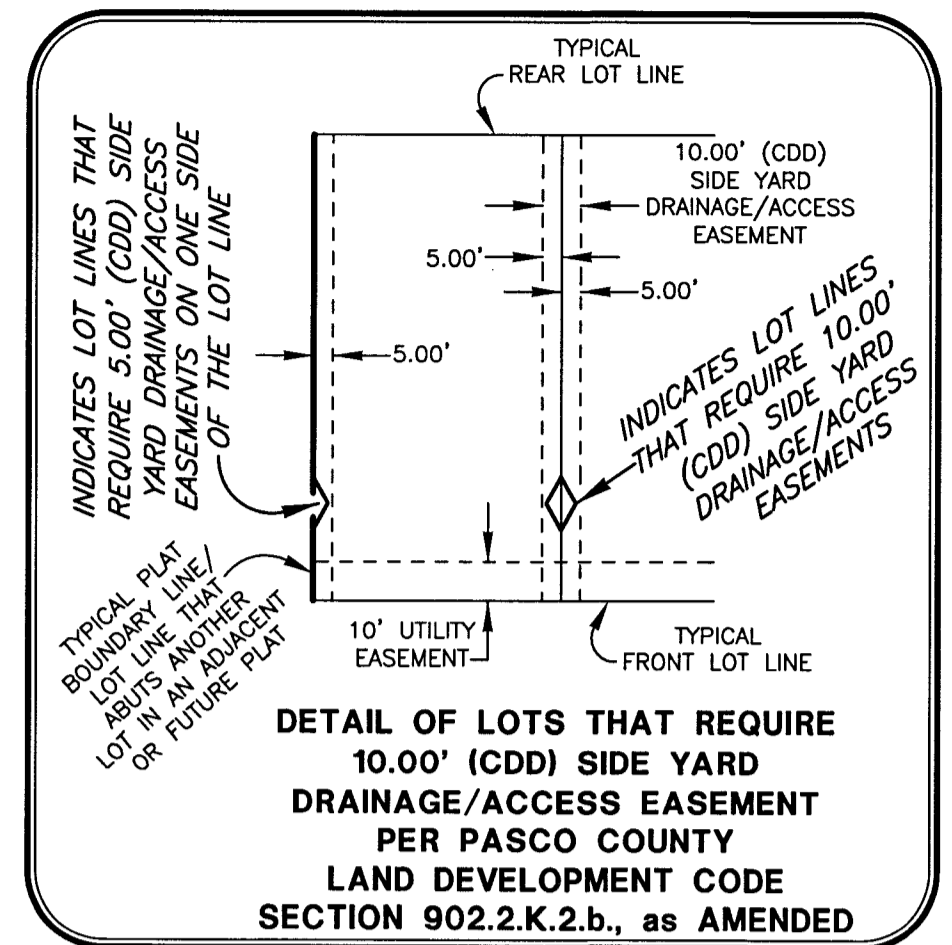


SEE SHEET 3 OF 14 FOR BASIS OF BEARINGS

SEE SHEET 2 OF 14 FOR PARALLEL OFFSET DIMENSIONS NOTE

**AMERRITT, INC.**  
 LAND SURVEYING & MAPPING  
 Certificate of Authorization Number LB 7778  
 3010 W. Azelle Street, Suite 150  
 Tampa, FL 33609  
 PHONE: (813) 221-5200

**TWO RIVERS PARCEL E2 PHASE A**  
 LYING IN SECTION 33, TOWNSHIP 26 SOUTH, RANGE 21 EAST, PASCO COUNTY, FLORIDA



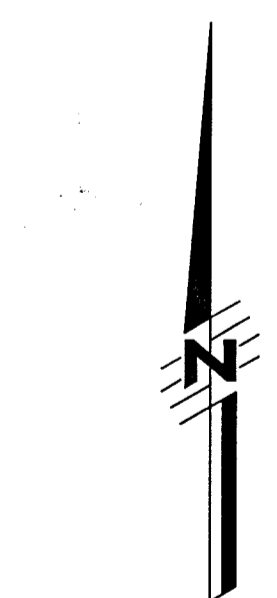
- LEGEND**
- Symbol ■ indicates Set (P.R.M.) Permanent Reference Monument
  - Symbol □ indicates Set (P.R.M.) Offset Permanent Reference Monument
  - Symbol ● indicates (P.C.P.) Permanent Control Point (See Sheet No. 2 for P.C.P. Reference Diagram)
  - (R) indicates radial line
  - (NR) indicates non-radial line
  - (RB) indicates reference bearing
  - O.R. - Official Records Book
  - (CDD) - Two Rivers East Community Development District
  - D.&A.E. - Drainage and Access Easement
  - R/W - Right-of-way
  - (P) U.E. - (Public) Utility Easement
  - S.W.F.W.M.D. - Southwest Florida Water Management District Wetland Line

**Wetland Conservation Area Note:**

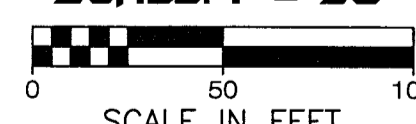
Wetland Conservation Areas as shown hereon may be subject to certain restrictions found in: Pasco County Land Development Code, Southwest Florida Water Management District (S.W.F.W.M.D.) Environmental Resource Permit, and/or the United States Army Corps of Engineers (C.O.E.) Permit.

**CURVE DATA TABLE**

NO.	RADIUS	DELTA	ARC	CHORD	BEARING
13	250.00	67°44'51"	295.60	278.68	S.54°07'34"W.
14	250.00	55°38'51"	242.81	233.38	S.48°04'34"W.
15	250.00	12°06'00"	52.80	52.70	S.81°57'00"W.
16	600.00	19°00'00"	198.97	198.06	N.82°30'00"W.
17	600.00	12°07'20"	126.94	126.71	N.85°56'20"W.
18	600.00	06°52'40"	72.02	71.98	N.76°26'20"W.
19	225.00	18°49'40"	73.94	73.60	S.19°32'10"W.
20	400.00	85°57'00"	600.04	545.34	S.14°01'30"E.
23	75.00	63°54'00"	83.64	79.38	S.46°03'00"E.
60	100.00	24°00'00"	41.89	41.58	N.66°00'00"W.
61	100.00	26°22'39"	46.04	45.63	N.40°48'40"W.
62	100.00	13°31'21"	23.60	23.55	N.20°51'40"W.
63	20.00	81°13'53"	28.35	26.04	N.54°42'46"W.
64	275.00	03°19'33"	15.96	15.96	S.86°20'14"W.
65	625.00	08°07'18"	88.59	88.52	N.87°56'21"W.
66	20.00	85°59'58"	30.02	27.28	S.53°07'19"W.
67	250.00	01°52'40"	8.19	8.19	S.11°03'40"W.
68	250.00	13°00'00"	56.72	56.60	S.18°30'00"W.
69	250.00	03°57'00"	17.24	17.23	S.26°58'30"W.
70	375.00	08°16'00"	54.11	54.06	S.24°49'00"W.
71	375.00	12°46'00"	83.56	83.38	S.14°18'00"W.
72	375.00	12°46'00"	83.56	83.38	S.01°32'00"W.
177	25.00	108°19'44"	47.27	40.53	S.80°51'37"W.



**SCALE: 1" = 50'**

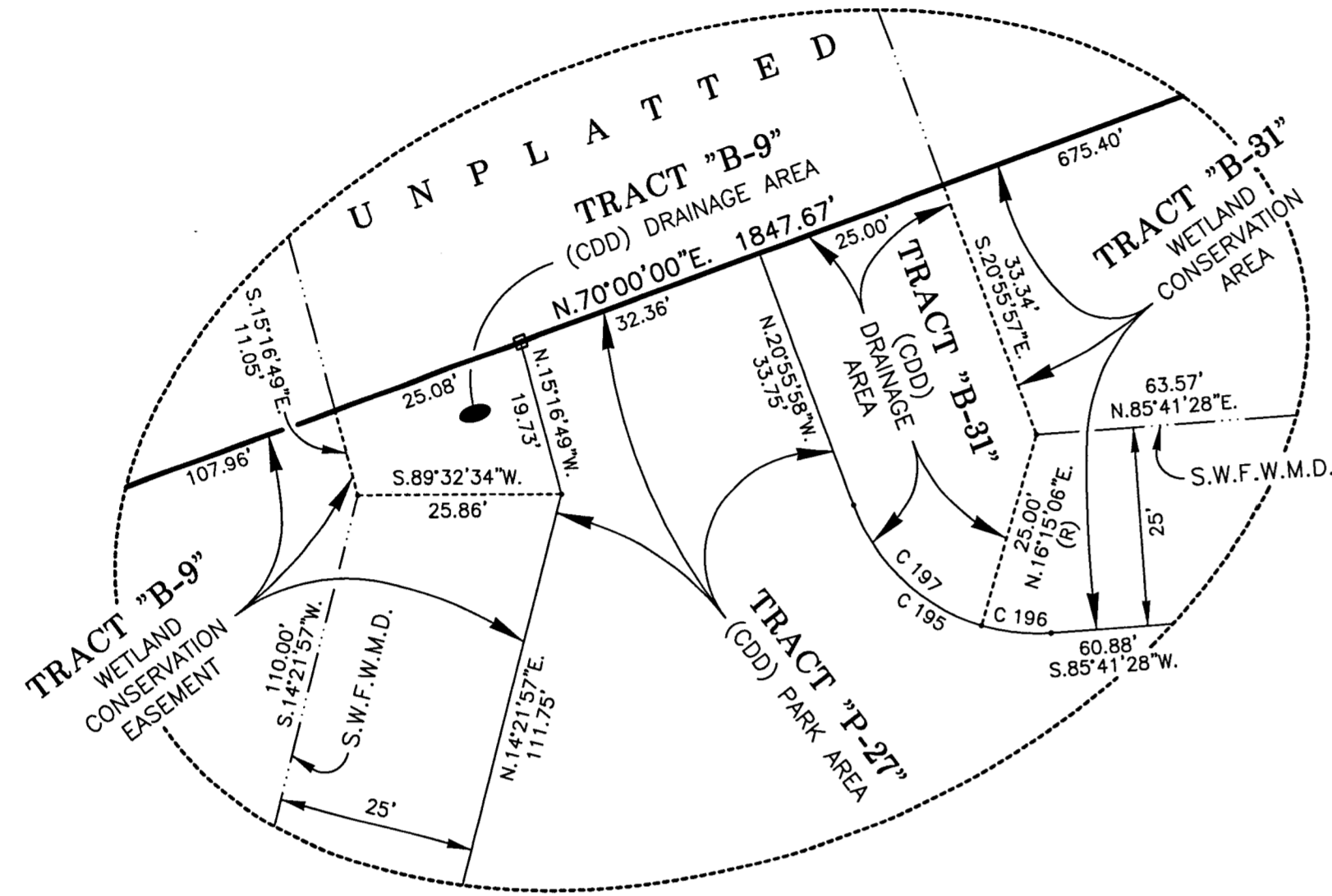


SEE SHEET 3 OF 14 FOR BASIS OF BEARINGS

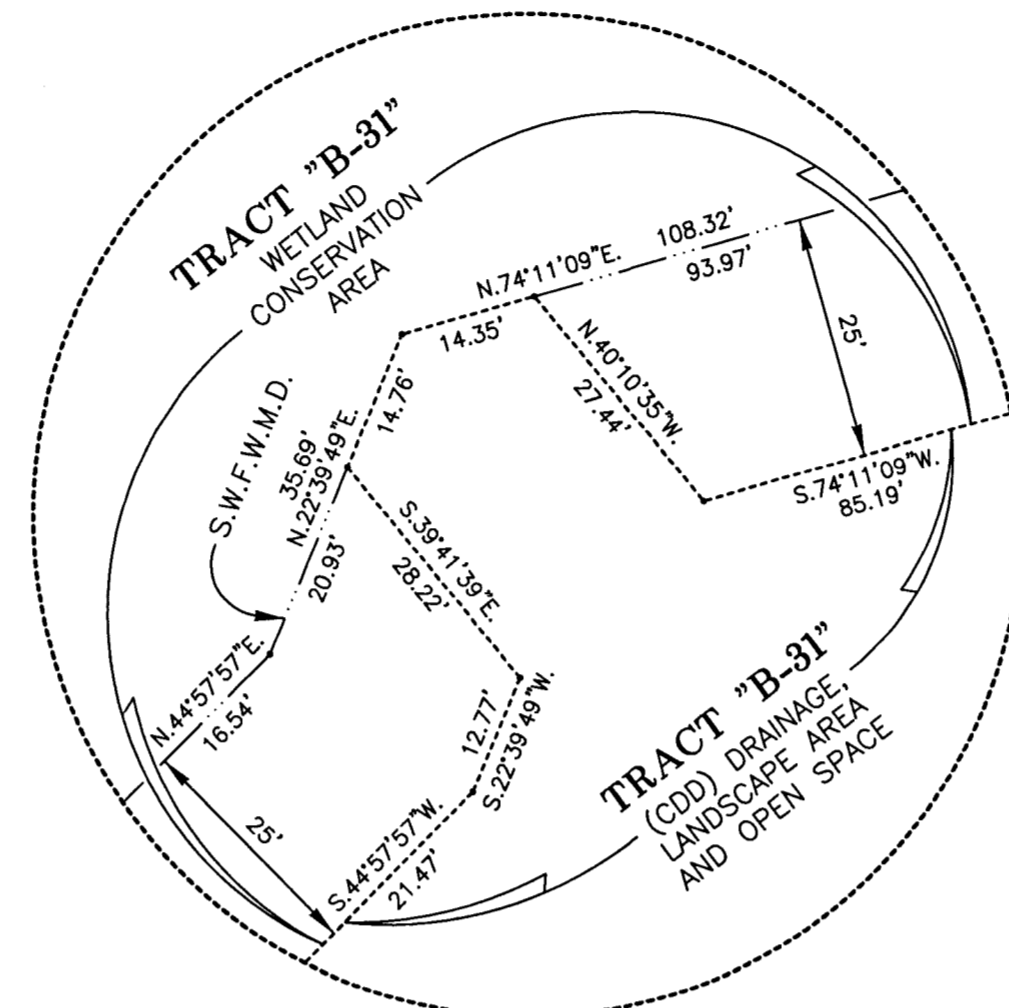
SEE SHEET 2 OF 14 FOR PARALLEL OFFSET DIMENSIONS NOTE

**AMERRITT, INC.**  
 LAND SURVEYING & MAPPING  
 Certificate of Authorization Number LB 7778  
 3010 W. Azulee Street, Suite 150  
 Tampa, FL 33609  
 PHONE: (813) 221-5200

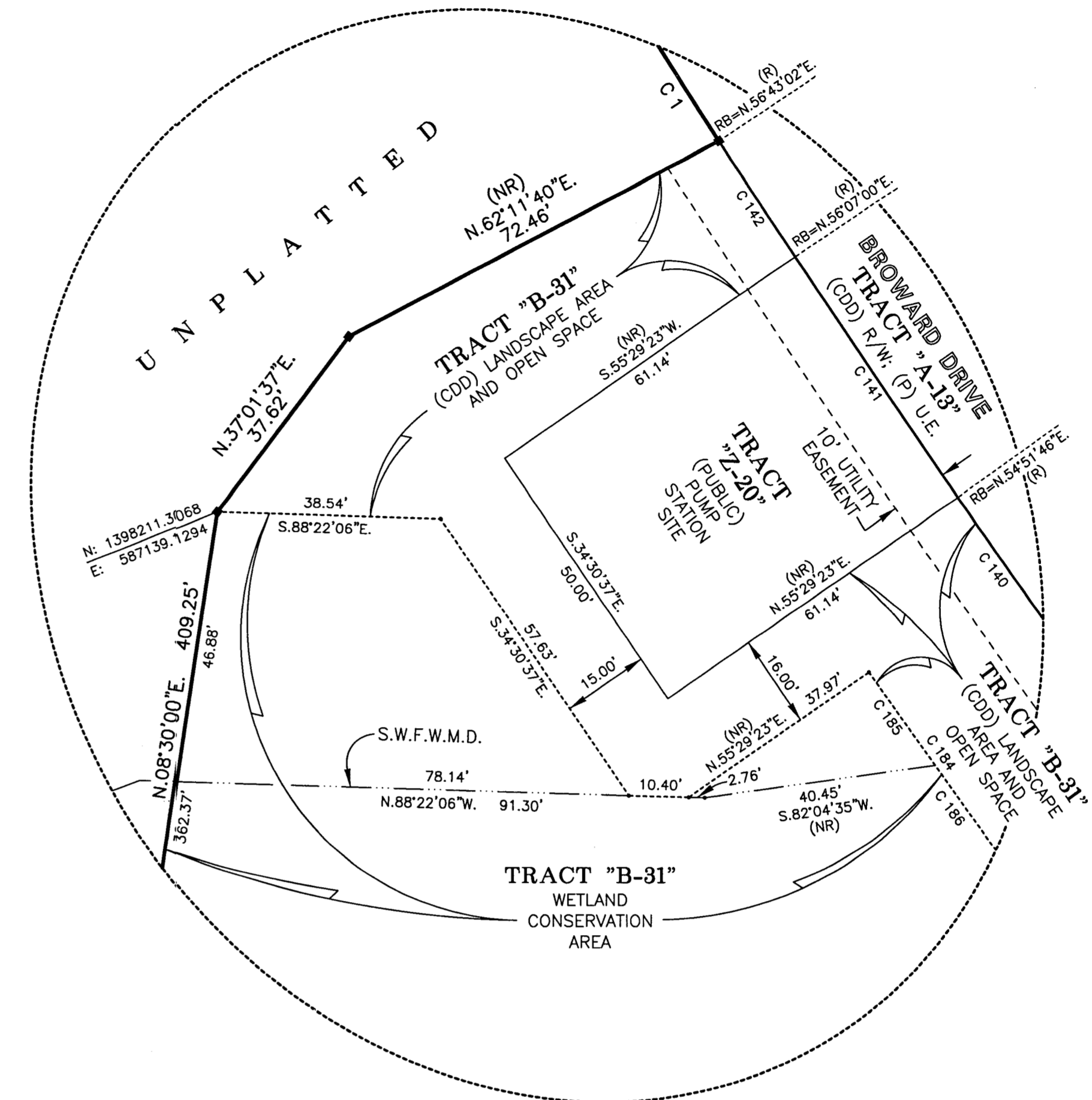
**TWO RIVERS PARCEL E2 PHASE A**  
LYING IN SECTION 33, TOWNSHIP 26 SOUTH, RANGE 21 EAST, PASCO COUNTY, FLORIDA



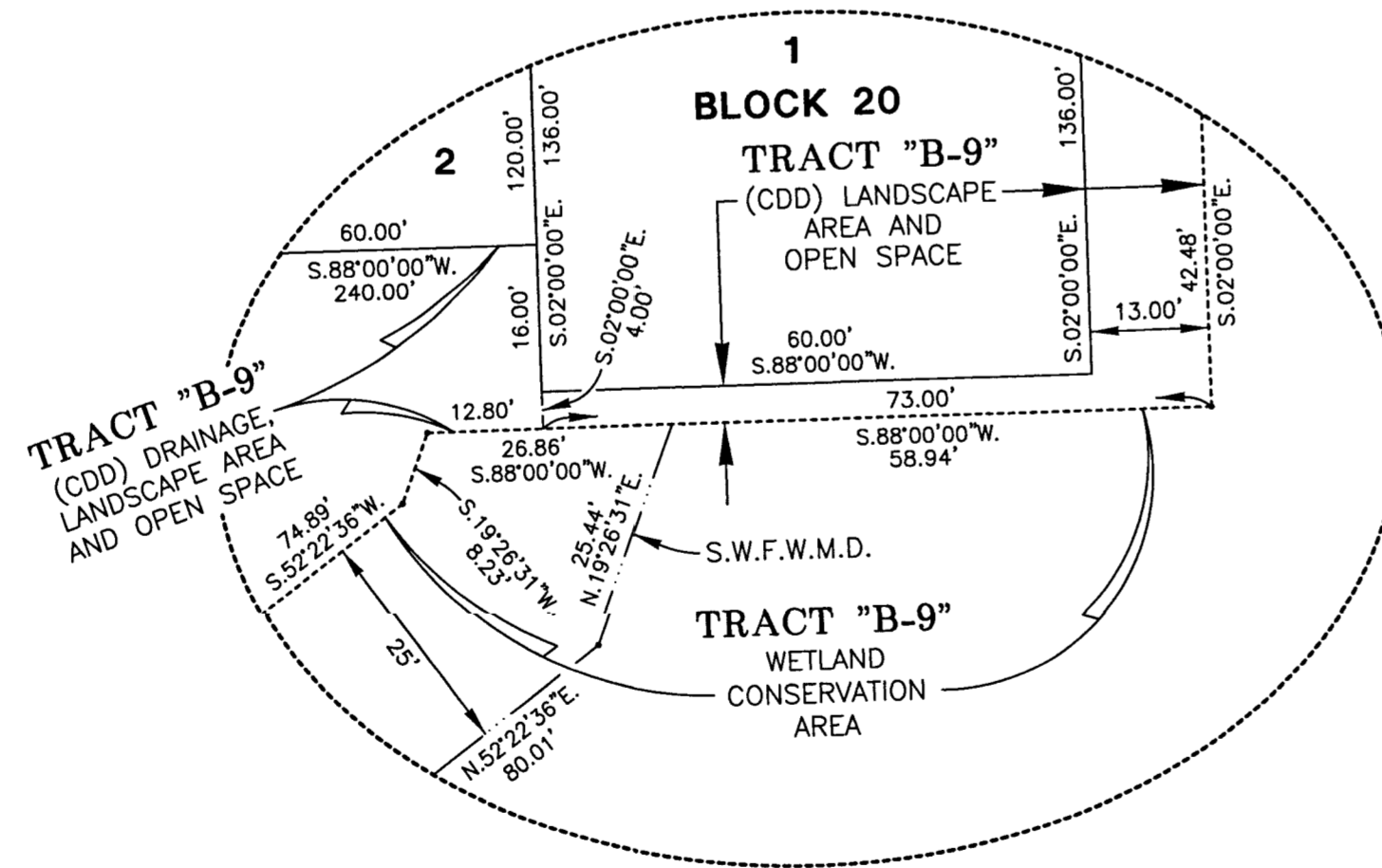
**DETAIL "A"**  
NOT TO SCALE  
(SEE SHEET 6)



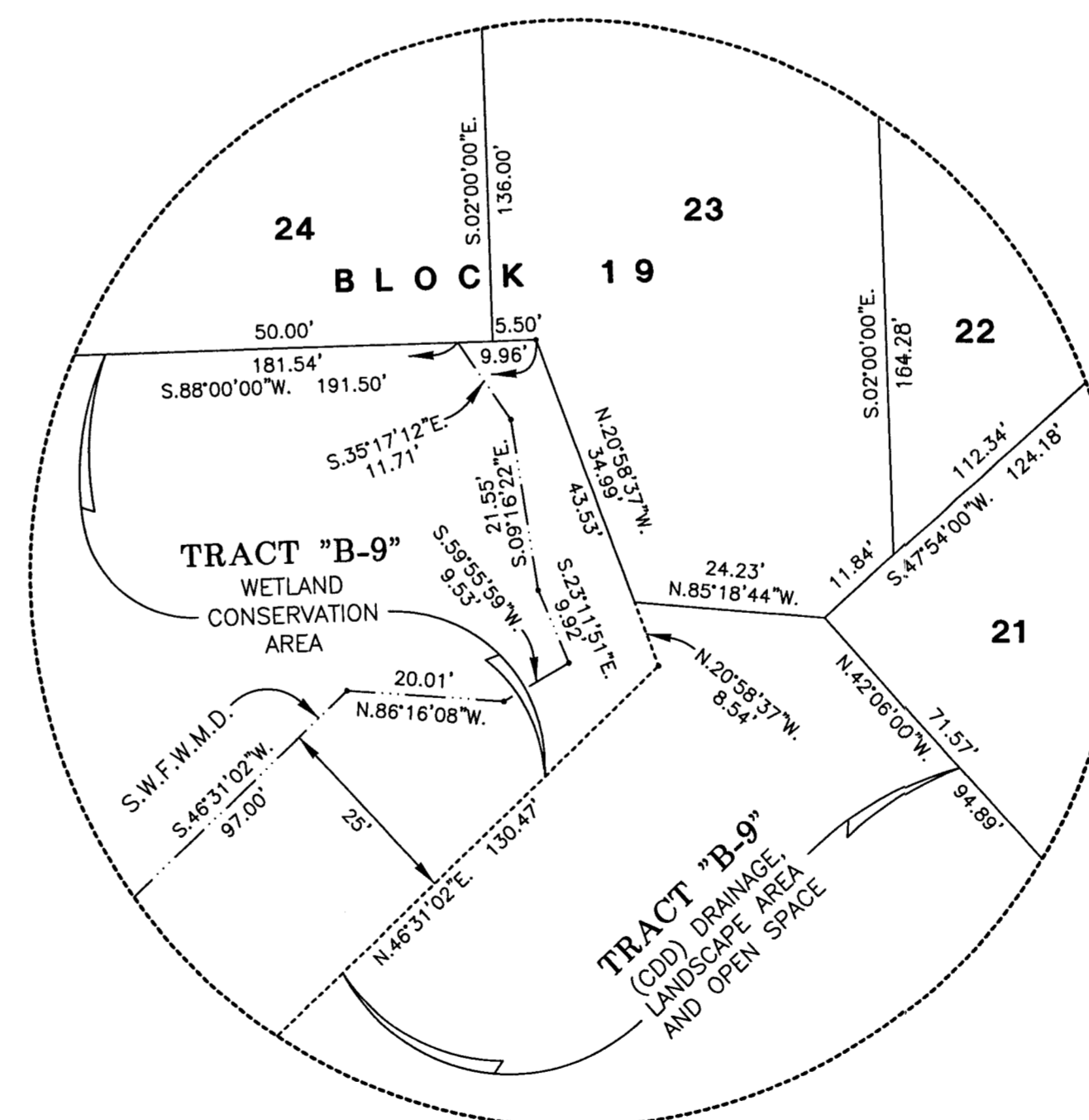
**DETAIL "B"**  
NOT TO SCALE  
(SEE SHEET 6)



**DETAIL "F"**  
NOT TO SCALE  
(SEE SHEET 9)



**DETAIL "G"**  
NOT TO SCALE  
(SEE SHEET 13)



**DETAIL "H"**  
NOT TO SCALE  
(SEE SHEET 13)

**LEGEND**

- Symbol ■ indicates Set (P.R.M.) Permanent Reference Monument  
4"x4" Concrete Monument LB7778, unless otherwise noted.
- Symbol □ indicates Set (P.R.M.) Offset Permanent Reference Monument  
4"x4" Concrete Monument LB7778, unless otherwise noted.
- Symbol ● indicates (P.C.P.) Permanent Control Point  
(See Sheet No. 2 for P.C.P. Reference Diagram)
- (R) indicates radial line
- (NR) indicates non-radial line
- (RB) indicates reference bearing
- O.R. - Official Records Book
- (CDD) - Two Rivers East Community Development District
- D.&A.E. - Drainage and Access Easement
- R/W - Right-of-way
- (P) U.E. - (Public) Utility Easement
- S.W.F.W.M.D. - Southwest Florida Water Management District Wetland Line

**Wetland Conservation Area Note:**

Wetland Conservation Areas as shown hereon may be subject to certain restrictions found in: Pasco County Land Development Code, Southwest Florida Water Management District (S.W.F.W.M.D.) Environmental Resource Permit, and/or the United States Army Corps of Engineers (C.O.E.) Permit.

**CURVE DATA TABLE**

NO.	RADIUS	DELTA	ARC	CHORD	BEARING
1	2285.00	02°33'54"	102.30	102.29	N.32°00'01"W.
140	2285.00	03°56'56"	157.48	157.45	N.37°06'41"W.
141	2285.00	01°15'14"	50.00	50.00	N.34°30'37"W.
142	2285.00	00°38'02"	23.95	23.95	N.33°34'59"W.
184	2315.00	03°33'39"	143.87	143.85	S.37°18'20"E.
185	2315.00	00°29'19"	19.74	19.74	S.35°46'09"E.
186	2315.00	03°04'21"	124.14	124.12	S.37°32'59"E.
195	25.00	73°22'34"	32.02	29.87	N.57°37'15"W.
196	25.00	20°33'38"	8.97	8.92	N.84°01'43"W.
197	25.00	52°48'52"	23.04	22.24	N.47°20'24"W.

SEE SHEET 3 OF 14 FOR BASIS OF BEARINGS

SEE SHEET 2 OF 14 FOR PARALLEL OFFSET DIMENSIONS NOTE

**AMERRITT, INC.**  
LAND SURVEYING & MAPPING  
Certificate of Authorization Number LB 7778  
3010 W. Keesee Street, Suite 150  
Tampa, FL 33609  
PHONE (813) 221-5200